

LIST OF EXHIBITS

| DESCRIPTION | EXHIBITS | REFERENCE |
|---|----------|----------------------|
| I. Identification label Information & General Information | 1 | 2.1033 (b) 7 & 2.925 |
| 1. Production Plans | 1A | 2.1031 |
| 2. Application References | | N/A |
| 3. Data submittal Procedure | | |
| 4. Similar Certified Transmitter | | |
| II. Certification Data | 2 | |
| III. External Photographs | 3 | 2.1033 (b) 7 |
| IV. Block Diagrams (Circuit Diagrams) <i>-confidential</i> | 4 | 2.1033 (b) 5 |
| V. Schematic Diagrams & Antenna Assembly <i>-confidential</i> | 5 | 2.1033 (b) 5 |
| VI. Supplemental Test Report WLAN | 6 | 2.1033 (b) 6 |

**Part 15.247 – DTS, WLAN IX 260 Supplemental EMC Test Report,
For a previously Certified WLAN Intentional Radiator Module
INTEL, Corp. FCC ID: PD9WM3B2200BG with the Rangestar antenna**

1) Reference Conducted RF Power Output Part 15.247(b) and Equivalent Isotropic Radiated Power

2) Field Strength of Three Fundamental Operating Frequencies

3) Radiated Harmonics and Spurious Emissions 802.11(b) mode

4) Radiated Harmonics and Spurious Emissions 802.11(g) mode

5) Band Edge measurements 802.11(b) mode

6) Band Edge measurements 802.11(g) mode

7) AC Power Line Conducted Emissions 150 kHz – 30 MHz, Part 15.107(a)

8) Radiated Spurious Emissions 30 – 1000 MHz, Part 15.209 (a)

Note: *We reference some of the original test report exhibits for items Required by Part 15.247 (a), (b (1)), (d).*

| | DESCRIPTION | EXHIBITS | REFERENCE |
|-------|--|-----------------|------------------------|
| VI. | Test Report Bluetooth Original ITRONIX Certification | 6 | 2.1033 (b) 6 |
| | Part 15.247 – FHSS, Complete EMC Test Report for the previously Certified Bluetooth, Intentional Radiator Module, Mutsumi, Elec. Co., Ltd., FCC ID: POOWML-C11XX, Model: WML-C11NU. Installed in the IX260 and Certified under the FCC ID: KBCIX260MPIA555BT. | | |
| | Eleven Common Bluetooth Items | 6 | |
| | Six tests required | 6 | 15.247 (a, b, c, g, h) |
| | 1) The Occupied Bandwidth Section 15.247(a) ii | | |
| | 2) Conducted Output Power Section 15.247(b) 1 | | |
| | 3) EIRP limit Section 15.247(b) 3 | | |
| | 4) RF safety Section 15.247(b) 4 | see Exhibit XII | |
| | 5) Spurious Emissions Section 15.247 (c) | | |
| | 6) Power Spectral Density in Acquisition Mode | | |
| VII. | Test Set-up Procedures | 7 | 2.1041 |
| VIII. | Instruction Manual | 8 | 2.1033 (b) 3 |
| IX. | Internal Photographs | 9 | 2.1033 (b) 7 |
| X. | Part List and Tune Up Procedures - <i>confidential</i> | 10 | 2.1033 |
| XI. | MPE RF Exposure Information | 11 | 2.1093 & 15.247 (b)4 |
| XII. | Operational Description - <i>confidential</i> | 12 | 2.1033 (b) 1, 2, 4, 8 |
| | Antenna Requirements | 12 | 15.203 |
| XIII. | Cover Letter, Action Requested | 13 | |
| | Cover Letter, Request For Confidentiality | 13 | |
| | Cover Letter, Authorization to sign FCC Form 731 | 13 | |

Please NOTE: Exhibits 4, 5 and 10 & 12 are requested to held confidential

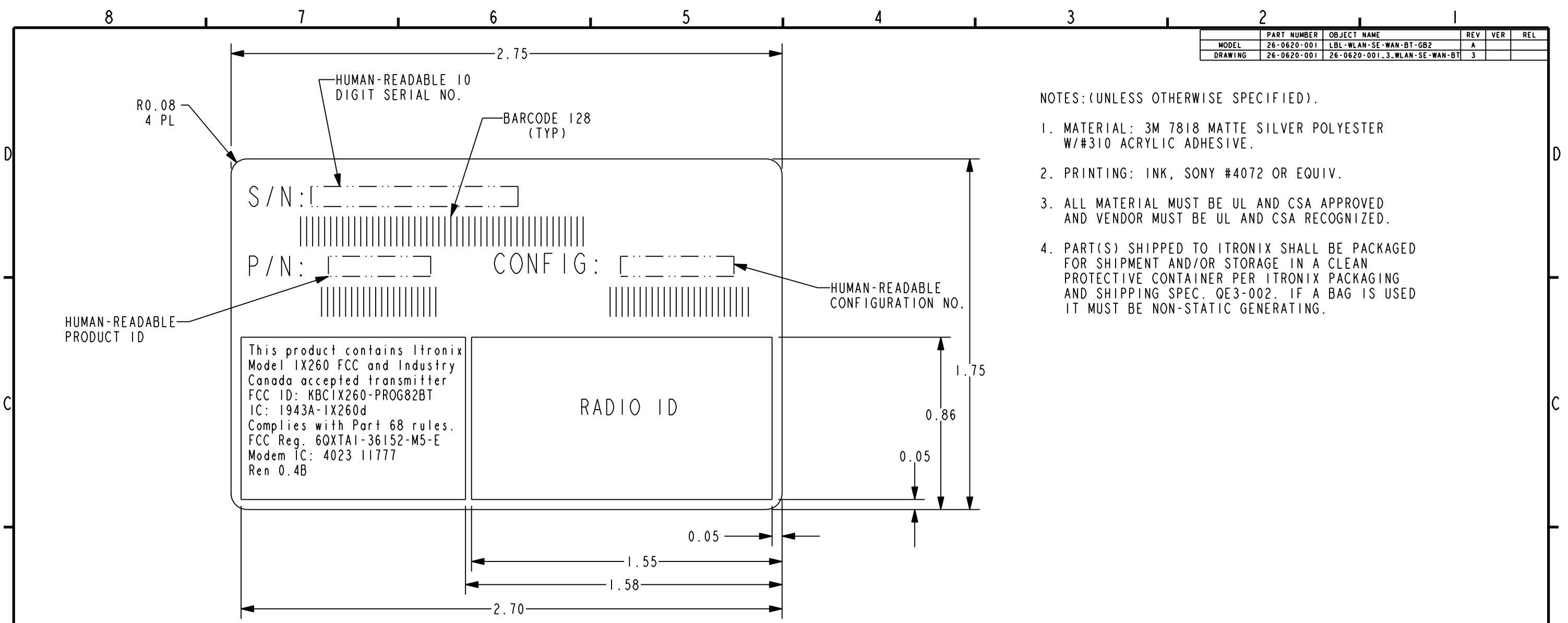
EXHIBIT 1. FCC and INDUSTRY CANADA IDENTIFICATION LABEL

The FCC Identifier label required under Section: 47 CFR, 2.1033(c) 11 for the FCC ID: KBCIX260-PROG82BT, is located on page following. The IC Identifier required by RSP-100 is also displayed.

| | PART NUMBER | OBJECT NAME | REV | VER | REL |
|---------|-------------|------------------------------|-----|-----|-----|
| MODEL | 26-0620-001 | LBL-WLAN-SE-WAN-BT-GB2 | A | | |
| DRAWING | 26-0620-001 | 26-0620-001.3.WLAN-SE-WAN-BT | 3 | | |

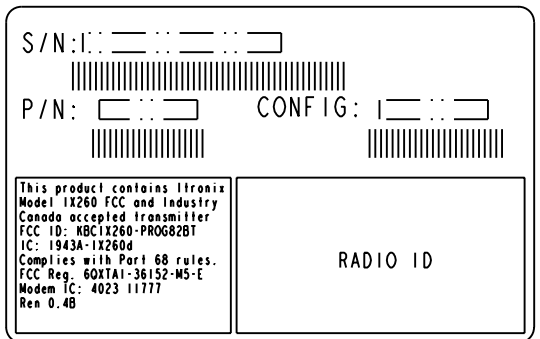
NOTES: (UNLESS OTHERWISE SPECIFIED).

1. MATERIAL: 3M 7818 MATTE SILVER POLYESTER W/#310 ACRYLIC ADHESIVE.
2. PRINTING: INK, SONY #4072 OR EQUIV.
3. ALL MATERIAL MUST BE UL AND CSA APPROVED AND VENDOR MUST BE UL AND CSA RECOGNIZED.
4. PART(S) SHIPPED TO ITRONIX SHALL BE PACKAGED FOR SHIPMENT AND/OR STORAGE IN A CLEAN PROTECTIVE CONTAINER PER ITRONIX PACKAGING AND SHIPPING SPEC. QE3-002. IF A BAG IS USED IT MUST BE NON-STATIC GENERATING.



This product contains Itronix Model IX260 FCC and Industry Canada accepted transmitter
 FCC ID: KBCIX260-PROG82BT
 IC: 1943A-IX260d
 Complies with Part 68 rules.
 FCC Reg. 6QXTA1-36152-M5-E
 Modem IC: 4023 11777
 Ren 0.4B

RADIO ID



SCALE 1.000

| CONFIGURATION | |
|------------------------|----------|
| RADIO | MODEM |
| INTEL PRO 2200BG WLAN | STANDARD |
| SONY ERICSSON GC82 WAN | |
| BLUE TOOTH | |

| ZONE | REV. | ECO | BY | DESCRIPTION OF CHANGE | APP. | DATE |
|------|------|-----|-----|---------------------------|------|------|
| C6 | 3 | MH | JMD | MODIFIED FCC RADIO NUMBER | | |
| C7 | 2 | MH | JMD | ADDED IC # | | |
| - | 1 | MH | JMD | PROTOTYPE RELEASE | | |

UNLESS OTHERWISE SPECIFIED, DIMENSIONS IN INCHES DO NOT SCALE DRAWING

NOTICE OF PROPRIETARY INFORMATION
 INFORMATION CONTAINED HEREIN IS PROPRIETARY AND IS PROPERTY OF ITRONIX CORP. WHERE FURNISHED WITH A PROPOSAL, THE RECIPIENT SHALL USE IT SOLELY TO EVALUATE THE PROPOSAL, WHERE FURNISHED TO A CUSTOMER IT SHALL BE USED SOLELY FOR PURPOSES OF INSPECTION INSTALLATION, OR MAINTENANCE. WHERE FURNISHED TO A SUPPLIER, IT SHALL BE USED SOLELY IN THE PERFORMANCE OF THE WORK CONTRACTED FOR BY THIS COMPANY. THE INFORMATION SHALL NOT BE USED OR DISCLOSED BY THE RECIPIENT FOR ANY OTHER PURPOSE WHATSOEVER.

.TOL. EXCEPT AS NOTED
 .XX ± 0.01 INCH
 .XXX ± 0.005 INCH
 ANG. = 1.0°

THIRD ANGLE PROJECTION

ITRONIX
 S.801 STEVENS, P.O. BOX 179
 SPOKANE, WA 99210

| DRAFTER | DATE | DESCRIPTION |
|------------|---------|---------------------------------|
| J. DERTING | 6-24-04 | LBL, GB2, WLAN, SE WAN, BT, STD |
| CHECKER | DATE | |
| ELEC. ENG | DATE | SIZE B DWG. NO 26-0620-001 |
| MECH. ENG | DATE | SCALE 2.000 SHEET 1 OF 1 REV 3 |
| MFG. ENG | DATE | |

FCC ID label location is on the bottom of the IX260 PC.

FCC ID label is the large label, with a silver background and black lettering, located right of center, between the covers labeled RAM and BATTERY.



Part 15.19 labeling requirement and compliance statement, upper left black label.

