

**INTERNAL DUT PHOTOGRAPHS**  
**802.11bg/Bluetooth Combo Module installed in IX100X**

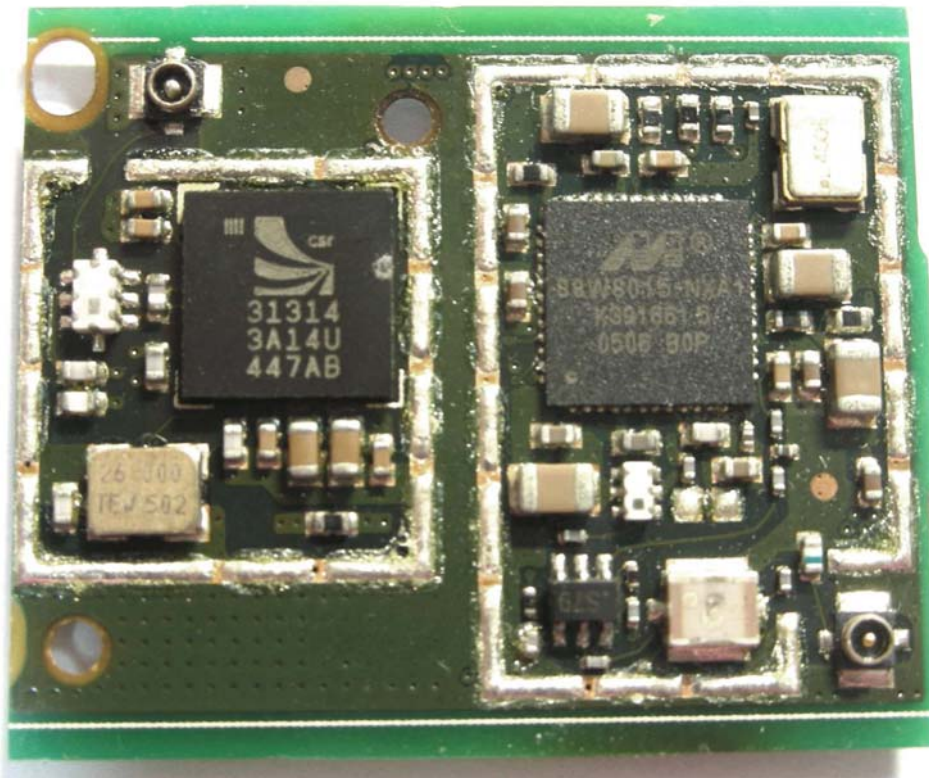


**INTERNAL DUT PHOTOGRAPHS**  
**802.11bg/Bluetooth Combo Module installed in IX100X**

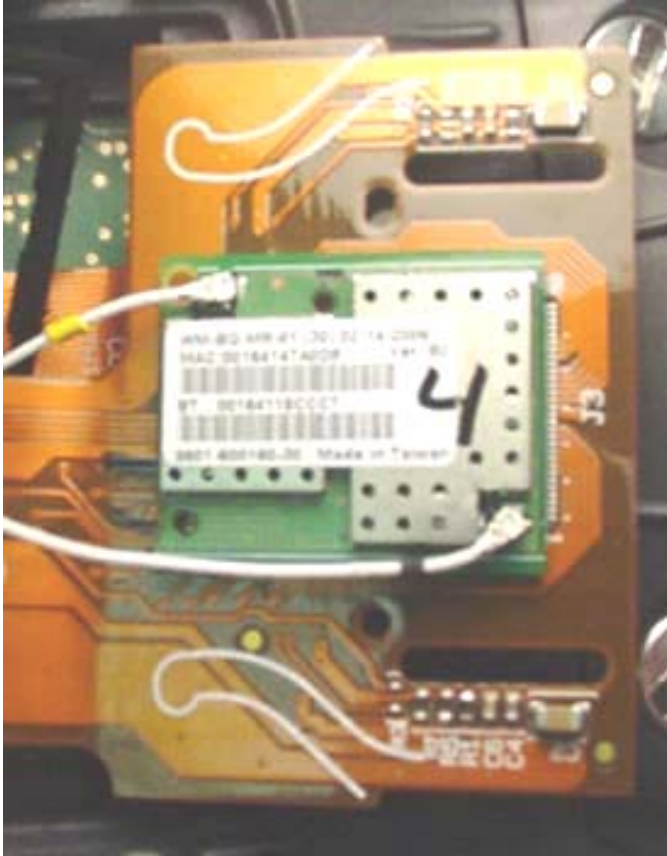




**INTERNAL DUT PHOTOGRAPHS**  
**802.11bg/Bluetooth Combo Module**

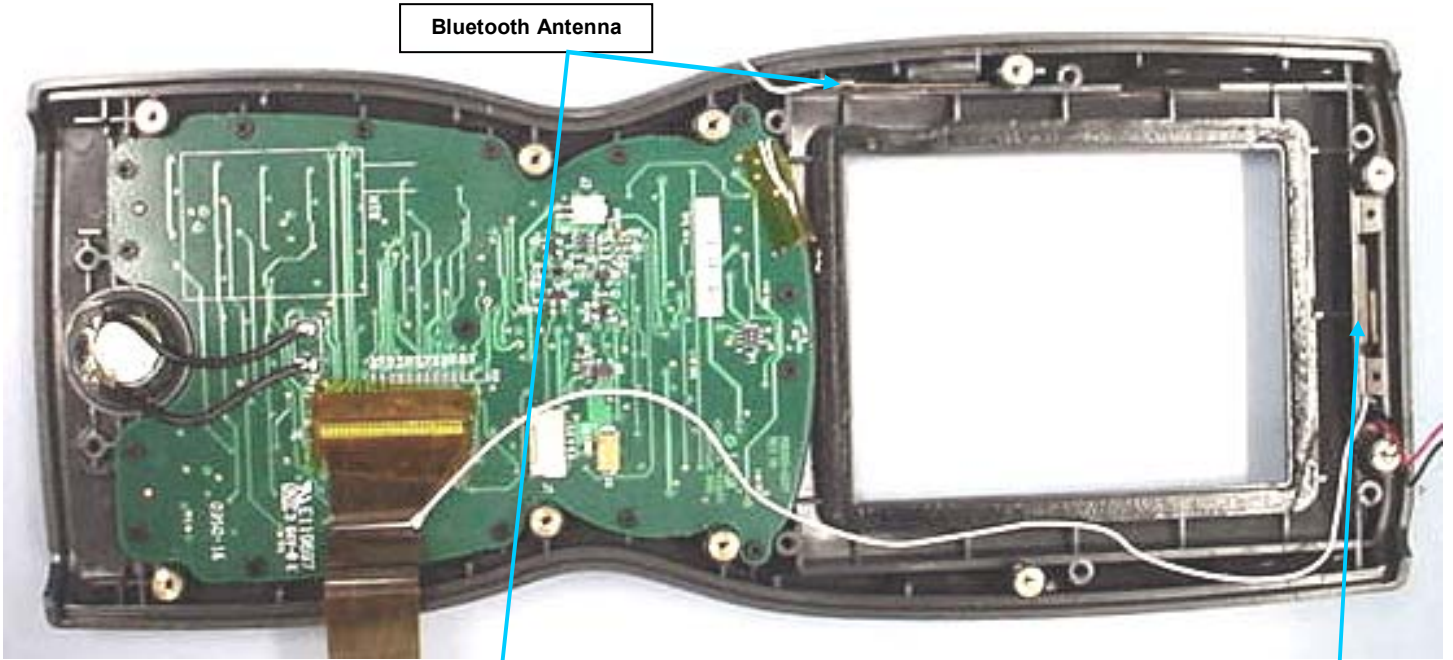


**INTERNAL DUT PHOTOGRAPHS**  
**802.11bg/Bluetooth Combo Module**





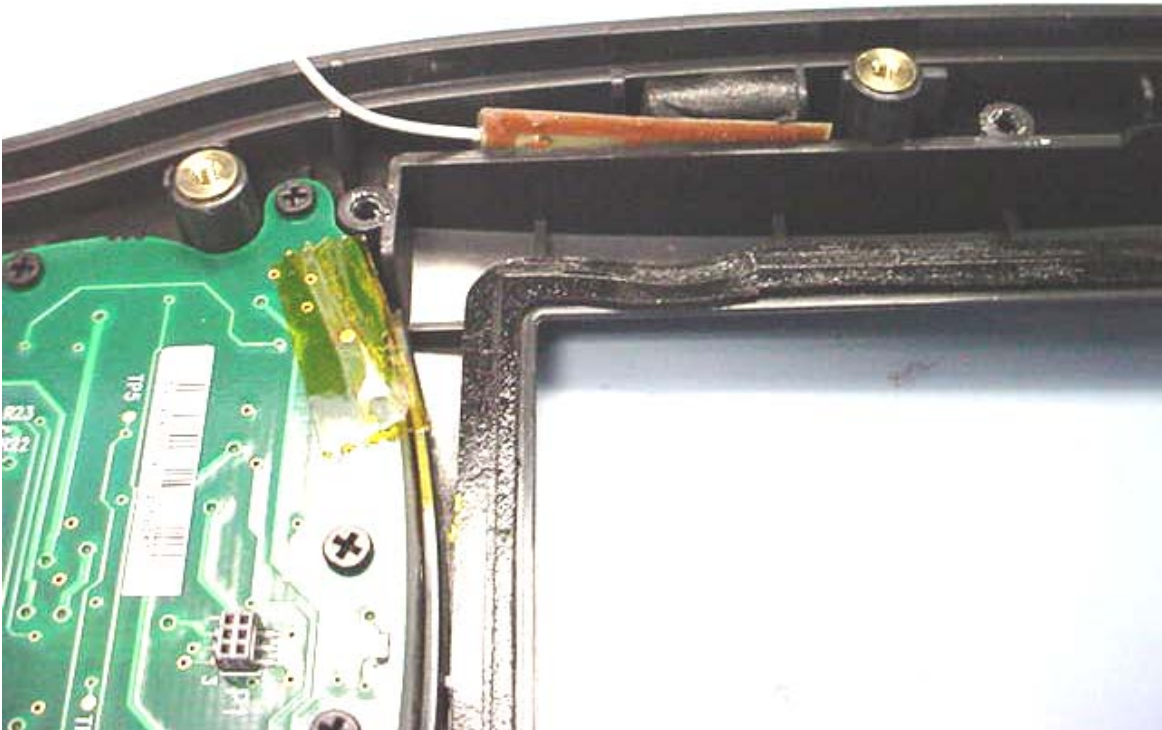
**INTERNAL DUT PHOTOGRAPHS  
802.11bg/Bluetooth Antenna Placement**



**INTERNAL DUT PHOTOGRAPHS**  
**802.11bg/Bluetooth Antenna Placement**



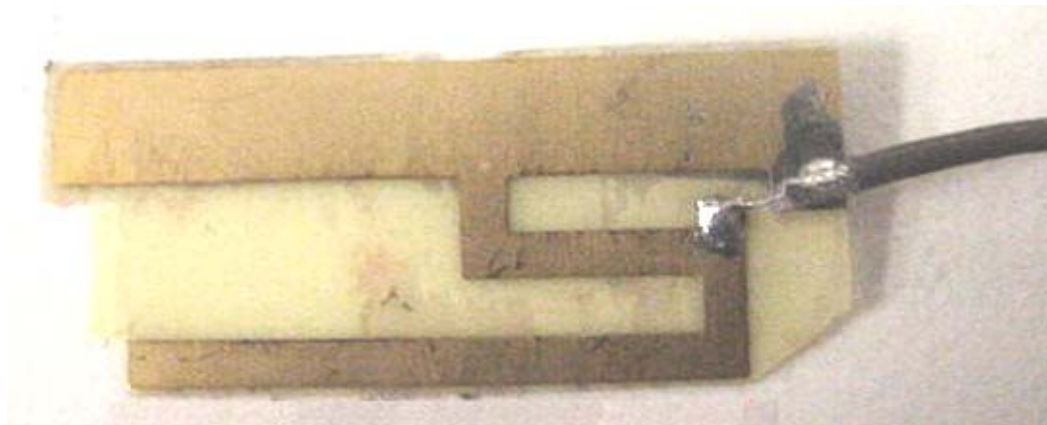
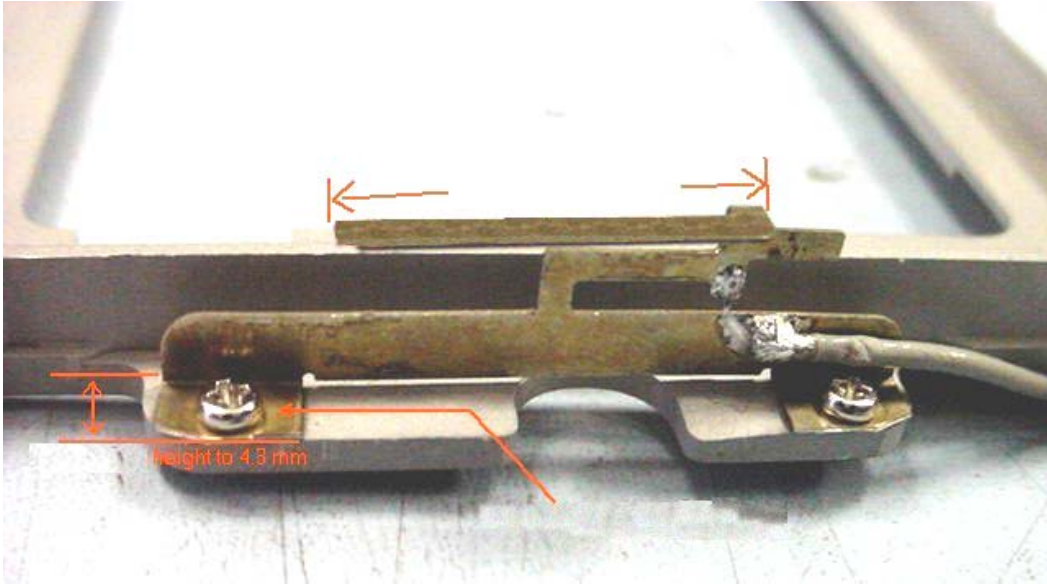
**802.11bg Antenna**



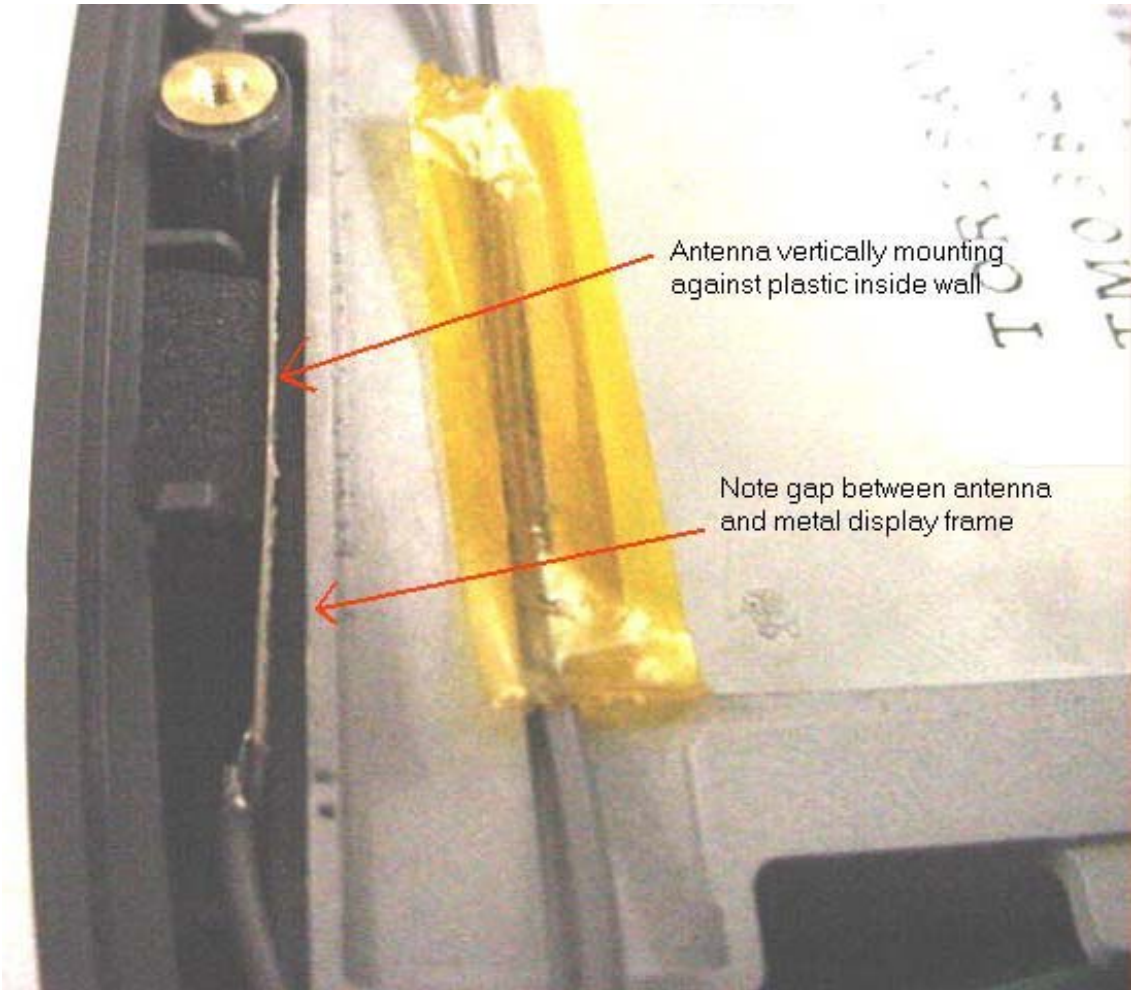
**Bluetooth Antenna**



**INTERNAL DUT PHOTOGRAPHS**  
**802.11bg/Bluetooth Antenna Placement**

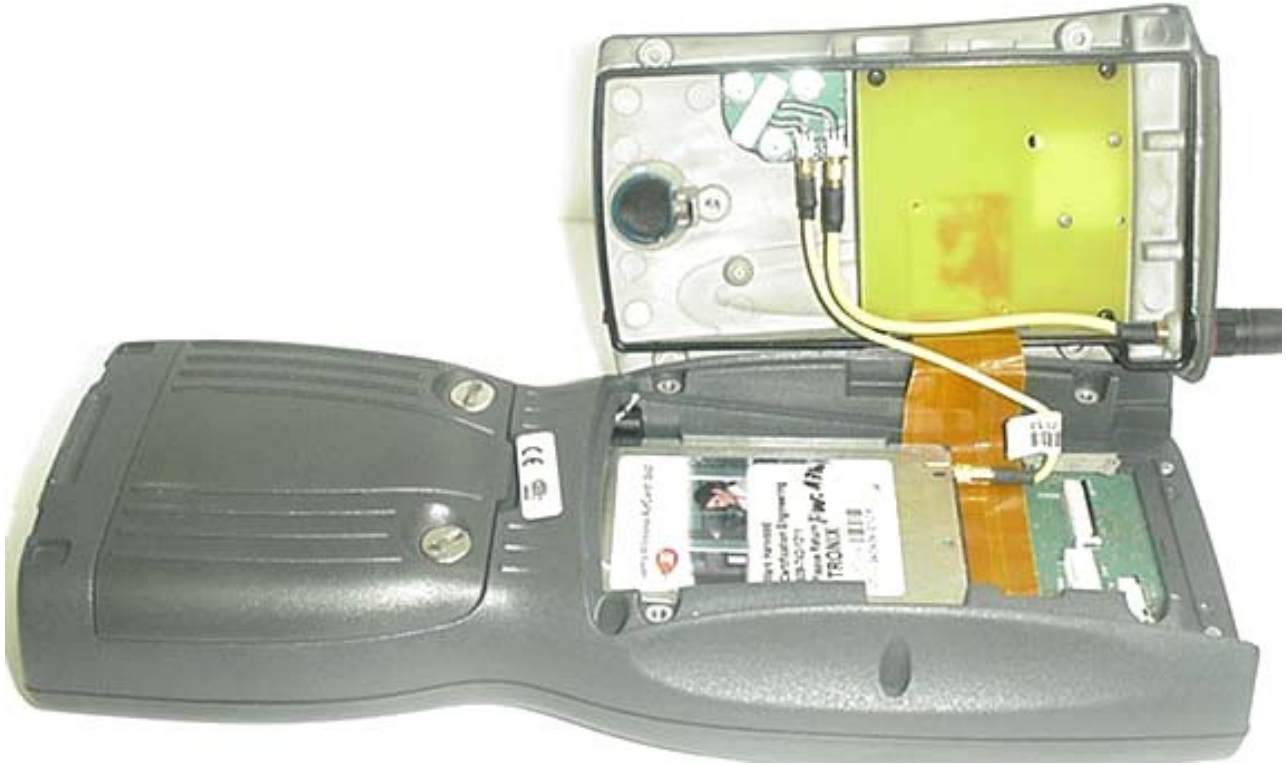


**INTERNAL DUT PHOTOGRAPHS**  
**802.11bg/Bluetooth Antenna Placement**

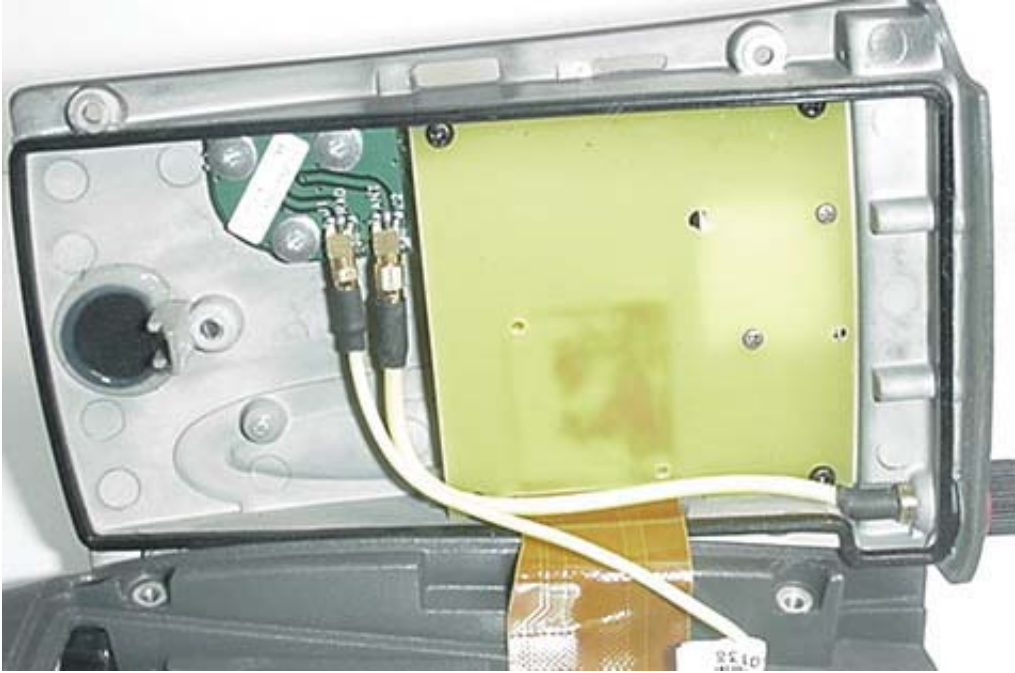




**INTERNAL DUT PHOTOGRAPHS**  
**Optional Co-located AC860 PCMCIA Card installed in IX100X**



**INTERNAL DUT PHOTOGRAPHS**  
Optional Co-located AC860 PCMCIA Card with IX100X Antenna Connector(s)





**INTERNAL DUT PHOTOGRAPHS**  
**Optional Co-located AirCard 860 GSM/GPRS/EDGE/UMTS PCMCIA Card**



**INTERNAL DUT PHOTOGRAPHS**  
**Optional Co-located AirCard 860 GSM/GPRS/EDGE/UMTS PCMCIA Card**





**INTERNAL DUT PHOTOGRAPHS**  
**Optional Co-located AirCard 860 GSM/GPRS/EDGE/UMTS PCMCIA Card**

