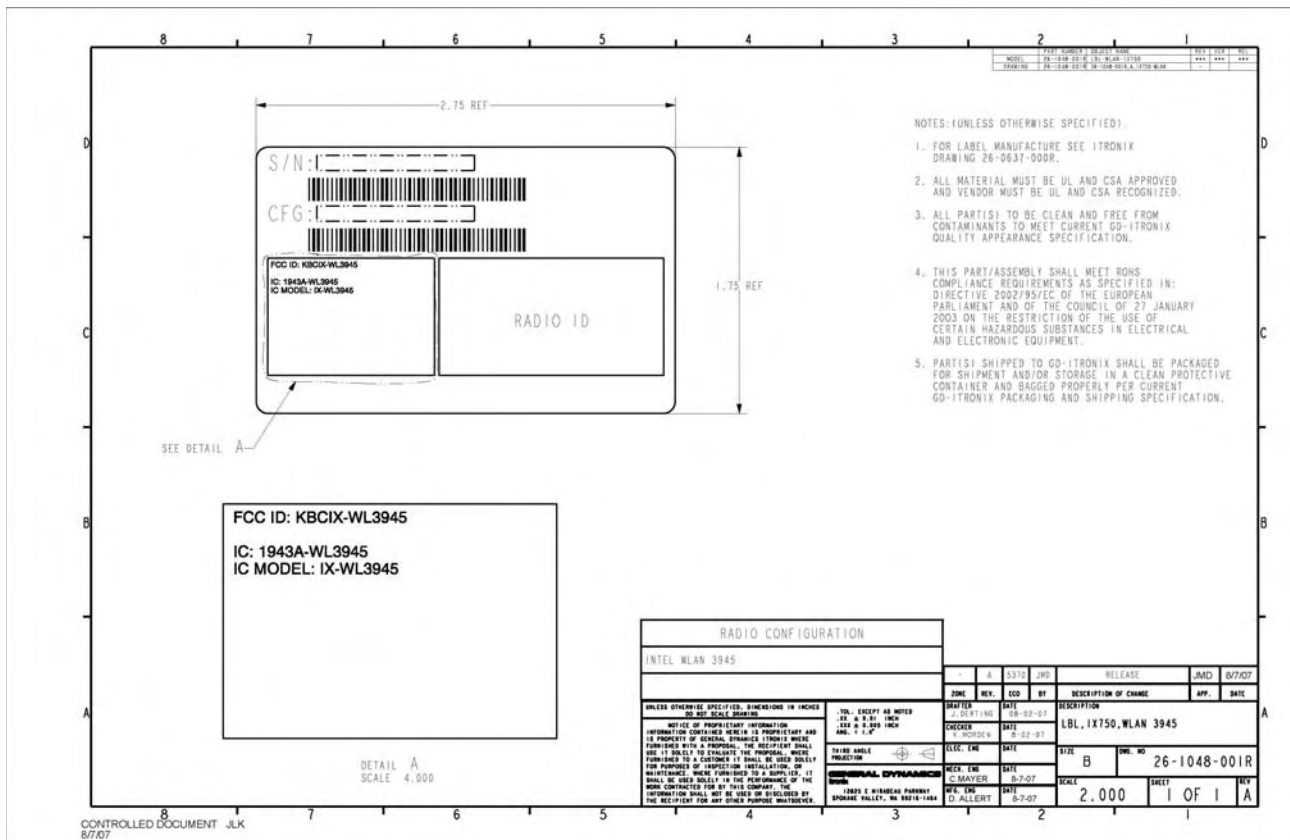


**FCC and IC Identifier Label Facsimiles for
FCC ID: KBCIX-WL3945 and Co-located Radio Combinations.
And
Label Location on the Host IX750**

Current FCC and IC ID Label facsimile shown below for the FCC ID: KBCIX-WL3945



The following pages contain:

- 1.) Photos of FCC/IC ID label location internally located user accessible on the IX750
- 2.) Facsimile of the FCC Part 15 Compliance Statement
- 3.) Three facsimile FCC/IC Identifier labels for co-located radio combinations

Identifier Label Location

The label on the left side states: Remove hard drive to review FCC information. This label is visible when the batter is removed from the IX750. Hard drive is shown partially removed from the slot it is installed in covering the FCC ID label location.



Battery on the left below, bottom of the IX750 on the right hard drive removed



**Label
Remove Hard Drive
Cartridge for
Agency Information**

**Label
FCC ID
IC ID**

**Label
FCC DoC**

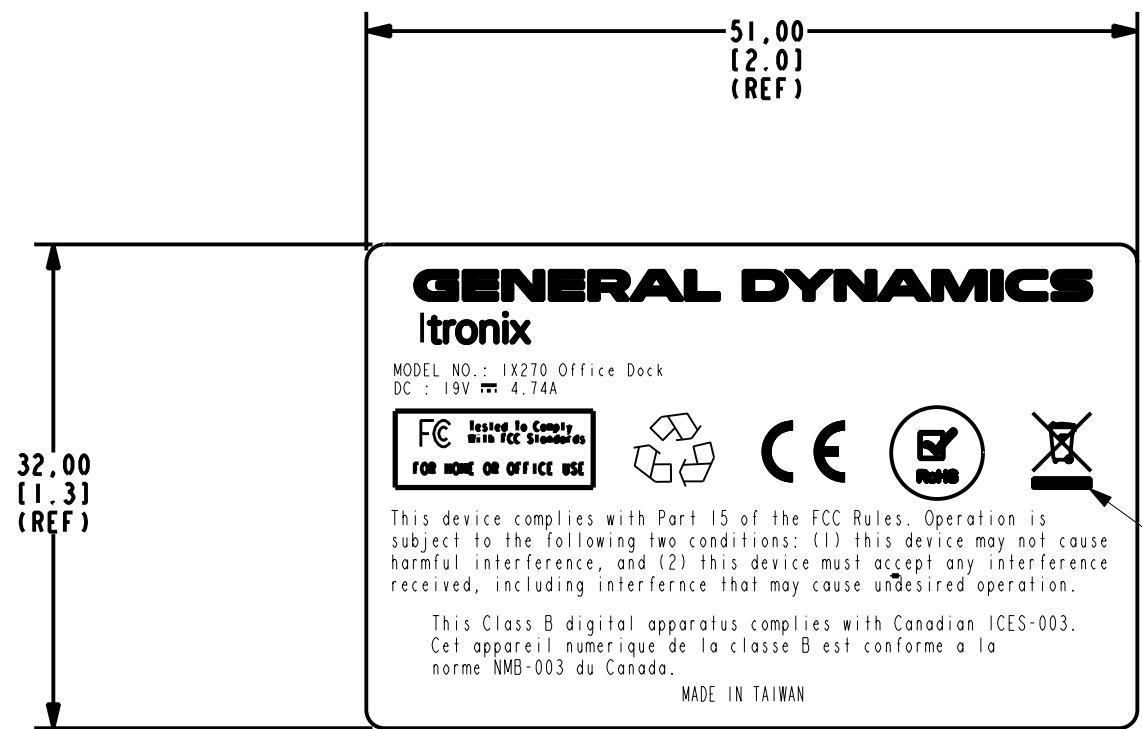


**Battery Pack
Removed Using
Thumb latches**

**Hard Disk Cartridge
Removed Using
Thumb latch**

This is the Base configuration FCC Label Placement for manufacturing consistency on all hardware options. The FCC ID is easily observed by removing the Battery with thumbs latch and the hard Disk Cartridge thumb latch.

MODEL	PART NUMBER	OBJECT NAME	REV	VER	REL
26-1043-001R	26-1043-001R	26-1043-001R			
DRAWING	26-1043-001R	26-1043-001R.A.LBL-FC-APPD-US-8D			



- NOTES: (UNLESS OTHERWISE SPECIFIED).
- MATERIAL: 3M 7818 MATTE SILVER POLYESTER W/#310 ACRYLIC ADHESIVE.
 - PRINTING: INK, ELECTRONIC IMAGING INC. #T80433074 OR EQUIV.
 - ALL MATERIAL MUST BE UL AND CSA APPROVED AND VENDOR MUST BE UL AND CSA RECOGNIZED.
 - SIZE OF LOGO TO MEET WEEE STANDARDS.
 - THIS PART/ASSEMBLY SHALL MEET ROHS COMPLIANCE REQUIREMENTS AS SPECIFIED IN: DIRECTIVE 2002/95/EC OF THE EUROPEAN PARLIAMENT AND OF THE COUNCIL OF 27 JANUARY 2003 ON THE RESTRICTION OF THE USE OF CERTAIN HAZARDOUS SUBSTANCES IN ELECTRICAL AND ELECTRONIC EQUIPMENT.
 - PART(S) SHIPPED TO ITRONIX SHALL BE PACKAGED FOR SHIPMENT AND/OR STORAGE IN A CLEAN PROTECTIVE CONTAINER PER ITRONIX PACKAGING AND SHIPPING SPEC. TSP-PACK-741. IF A BAG IS USED IT MUST BE NON-STATIC GENERATING.

UNLESS OTHERWISE SPECIFIED, DIMENSIONS IN MILLIMETERS
DO NOT SCALE DRAWING

NOTICE OF PROPRIETARY INFORMATION
INFORMATION CONTAINED HEREIN IS PROPRIETARY AND IS PROPERTY OF GENERAL DYNAMICS ITRONIX WHERE FURNISHED WITH A PROPOSAL. THE RECIPIENT SHALL USE IT SOLELY TO EVALUATE THE PROPOSAL. WHERE FURNISHED TO A CUSTOMER IT SHALL BE USED SOLELY FOR PURPOSES OF INSPECTION INSTALLATION, OR MAINTENANCE. WHERE FURNISHED TO A SUPPLIER, IT SHALL BE USED SOLELY IN THE PERFORMANCE OF THE WORK CONTRACTED FOR BY THIS COMPANY. THE INFORMATION SHALL NOT BE USED OR DISCLOSED BY THE RECIPIENT FOR ANY OTHER PURPOSE WHATSOEVER.

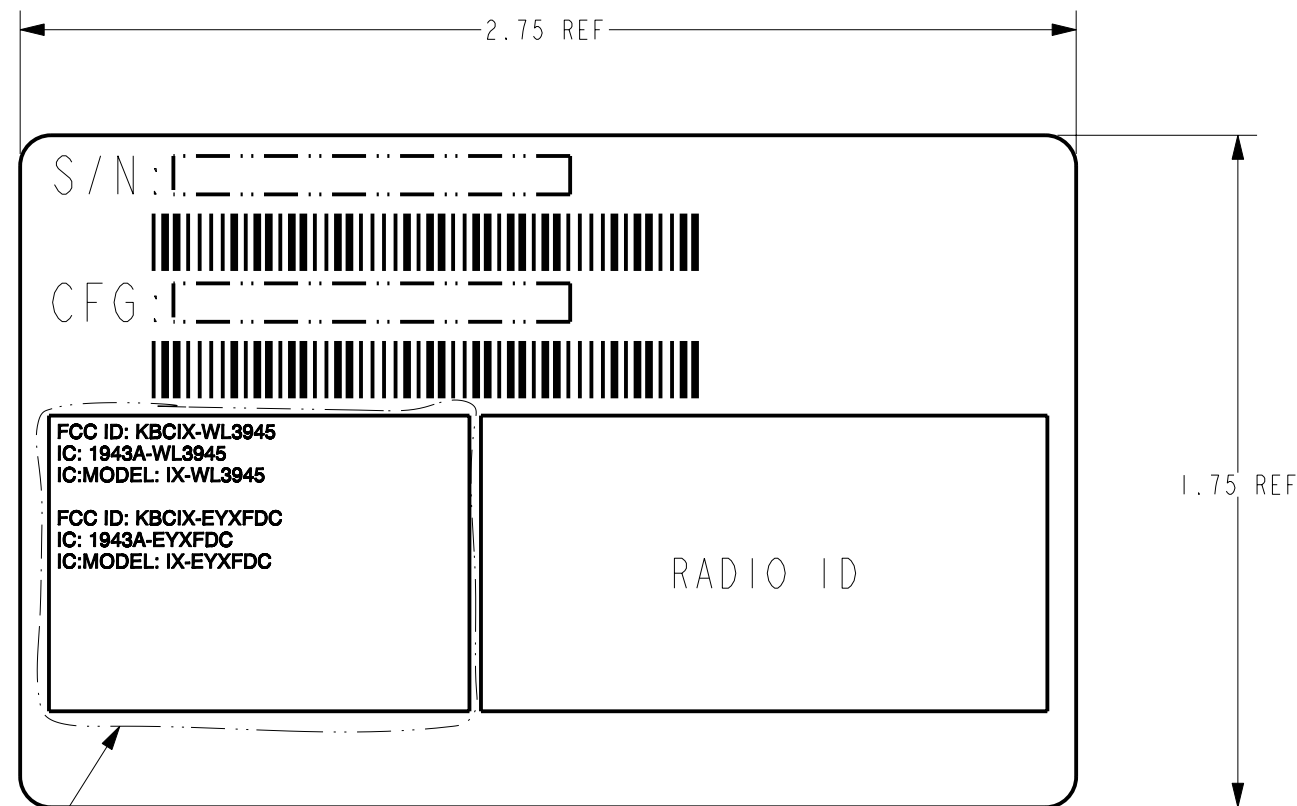
.TOL. EXCEPT AS NOTED
X ± 0.5 MM
X.X ± 0.25 MM
X.XX ± 0.125 MM
ANG. = 1.0°

THIRD ANGLE PROJECTION

ITRONIX
12825 E MIRABEAU PARKWAY
SPOKANE VALLEY, WA 99216-1464

ZONE	REV.	ECO	BY	DESCRIPTION OF CHANGE	APP.	DATE
-	I	TT	KM	PROTOTYPE RELEASE		
DRAFTER	K. MORDEN	DATE	7-26-07	DESCRIPTION		
CHECKER	J. DERTING	DATE	7-26-07	LBL, IX270, FCC APPD US		
ELEC. ENG		DATE		SIZE	DWG. NO	
MECH. ENG		DATE		B	26-1043-001R	
MFG. ENG		DATE		SCALE	SHEET	REV
				2.000	1 OF 1	1

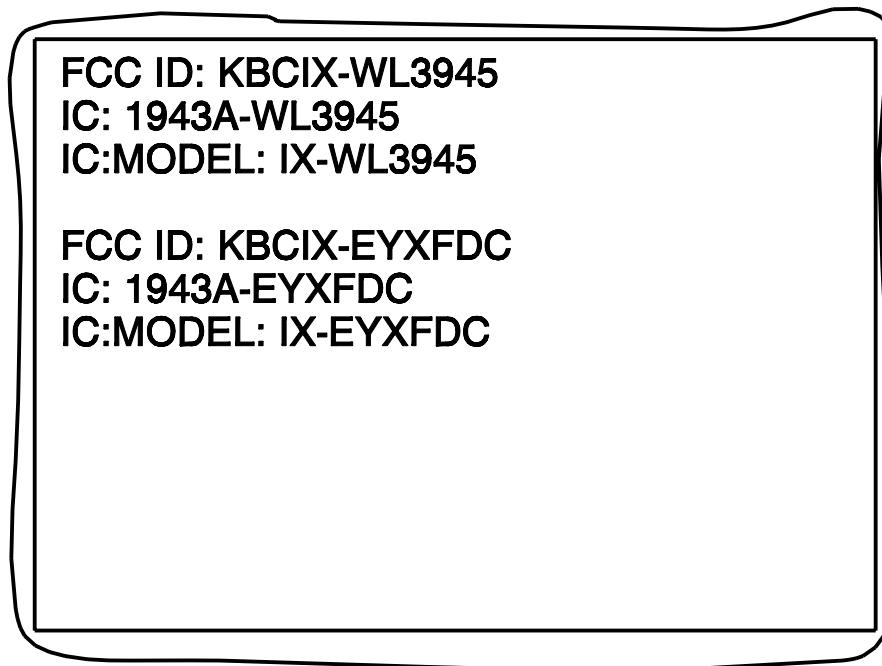
MODEL	PART NUMBER	OBJECT NAME	REV	VER	REL
	26-1065-001R	LBL-1X750-BT-WL3945	***	***	***
DRAWING	26-1065-001R	26-1065-001R.1.1X750-BT-WL3945	-		



NOTES: (UNLESS OTHERWISE SPECIFIED).

- FOR LABEL MANUFACTURE SEE ITRONIX DRAWING 26-0637-000R.
- ALL MATERIAL MUST BE UL AND CSA APPROVED AND VENDOR MUST BE UL AND CSA RECOGNIZED.
- ALL PART(S) TO BE CLEAN AND FREE FROM CONTAMINANTS TO MEET CURRENT GD-ITRONIX QUALITY APPEARANCE SPECIFICATION.
- THIS PART/ASSEMBLY SHALL MEET ROHS COMPLIANCE REQUIREMENTS AS SPECIFIED IN: DIRECTIVE 2002/95/EC OF THE EUROPEAN PARLIAMENT AND OF THE COUNCIL OF 27 JANUARY 2003 ON THE RESTRICTION OF THE USE OF CERTAIN HAZARDOUS SUBSTANCES IN ELECTRICAL AND ELECTRONIC EQUIPMENT.
- PART(S) SHIPPED TO GD-ITRONIX SHALL BE PACKAGED FOR SHIPMENT AND/OR STORAGE IN A CLEAN PROTECTIVE CONTAINER AND BAGGED PROPERLY PER CURRENT GD-ITRONIX PACKAGING AND SHIPPING SPECIFICATION.

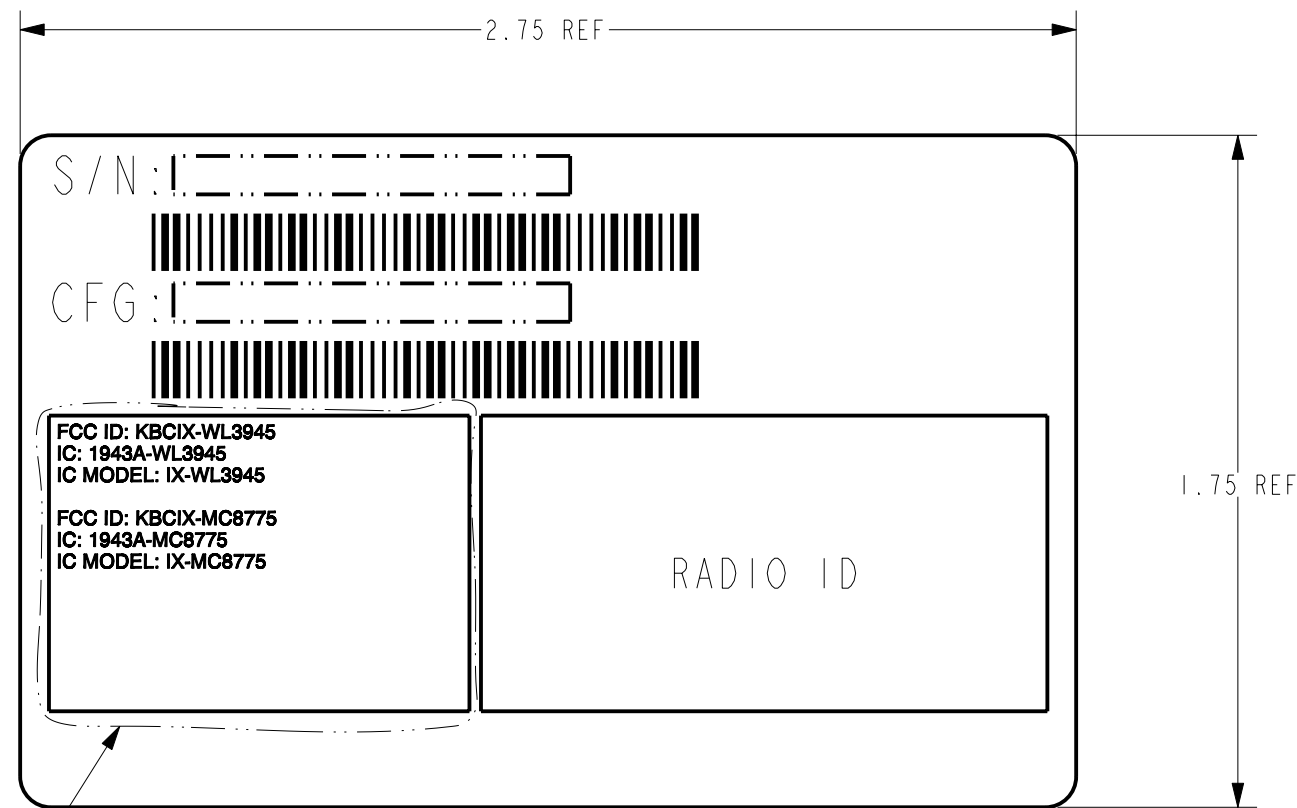
SEE DETAIL A



DETAIL A
SCALE 4.000

RADIO CONFIGURATION		- I KM				PROTOTYPE RELEASE			
INTEL WLAN 3945		ZONE		REV.	ECO	BY	DESCRIPTION OF CHANGE	APP.	DATE
BT MODULE		-		I		KM			
UNLESS OTHERWISE SPECIFIED, DIMENSIONS IN INCHES DO NOT SCALE DRAWING		.TOL. EXCEPT AS NOTED		DATE		DESCRIPTION			
NOTICE OF PROPRIETARY INFORMATION INFORMATION CONTAINED HEREIN IS PROPRIETARY AND IS PROPERTY OF GENERAL DYNAMICS ITRONIX WHERE FURNISHED WITH A PROPOSAL. THE RECIPIENT SHALL USE IT SOLELY TO EVALUATE THE PROPOSAL. WHERE FURNISHED TO A CUSTOMER IT SHALL BE USED SOLELY FOR PURPOSES OF INSPECTION INSTALLATION, OR MAINTENANCE. WHERE FURNISHED TO A SUPPLIER, IT SHALL BE USED SOLELY IN THE PERFORMANCE OF THE WORK CONTRACTED FOR BY THIS COMPANY. THE INFORMATION SHALL NOT BE USED OR DISCLOSED BY THE RECIPIENT FOR ANY OTHER PURPOSE WHATSOEVER.		.XX ± 0.01 INCH		11-14-07		LBL, 1X750, BT, WL3945			
		.XX ± 0.005 INCH		DATE		SIZE		DWG. NO	
THIRD ANGLE PROJECTION				DATE		B		26-1065-001R	
GENERAL DYNAMICS Itronix 12825 E MIRABEAU PARKWAY SPOKANE VALLEY, WA 99216-1464		ENGINEER		DATE		SCALE		SHEET	
		MFG. ENG		DATE		2.000		1 OF 1	
								REV	
								I	

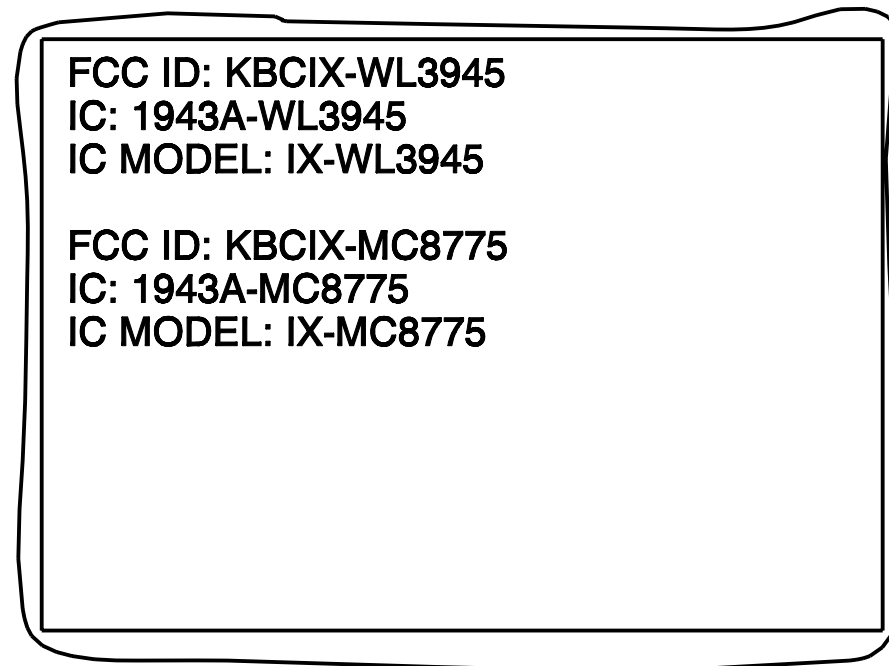
MODEL	PART NUMBER	OBJECT NAME	REV	VER	REL
	26-1124-001R	LBL-IX750-WL3945-8775_1	***	***	***
DRAWING	26-1124-001R	26-1124-001R.1.750-3945-8775	-		



NOTES: (UNLESS OTHERWISE SPECIFIED).

- FOR LABEL MANUFACTURE SEE ITRONIX DRAWING 26-0637-000R.
- THIS PART/ASSEMBLY SHALL MEET ROHS COMPLIANCE REQUIREMENTS AS SPECIFIED IN: DIRECTIVE 2002/95/EC OF THE EUROPEAN PARLIAMENT AND OF THE COUNCIL OF 27 JANUARY 2003 ON THE RESTRICTION OF THE USE OF CERTAIN HAZARDOUS SUBSTANCES IN ELECTRICAL AND ELECTRONIC EQUIPMENT.
- PART(S) SHIPPED TO GD-ITRONIX SHALL BE PACKAGED FOR SHIPMENT AND/OR STORAGE IN A CLEAN PROTECTIVE CONTAINER AND BAGGED PROPERLY PER CURRENT GD-ITRONIX PACKAGING AND SHIPPING SPECIFICATION.

SEE DETAIL A



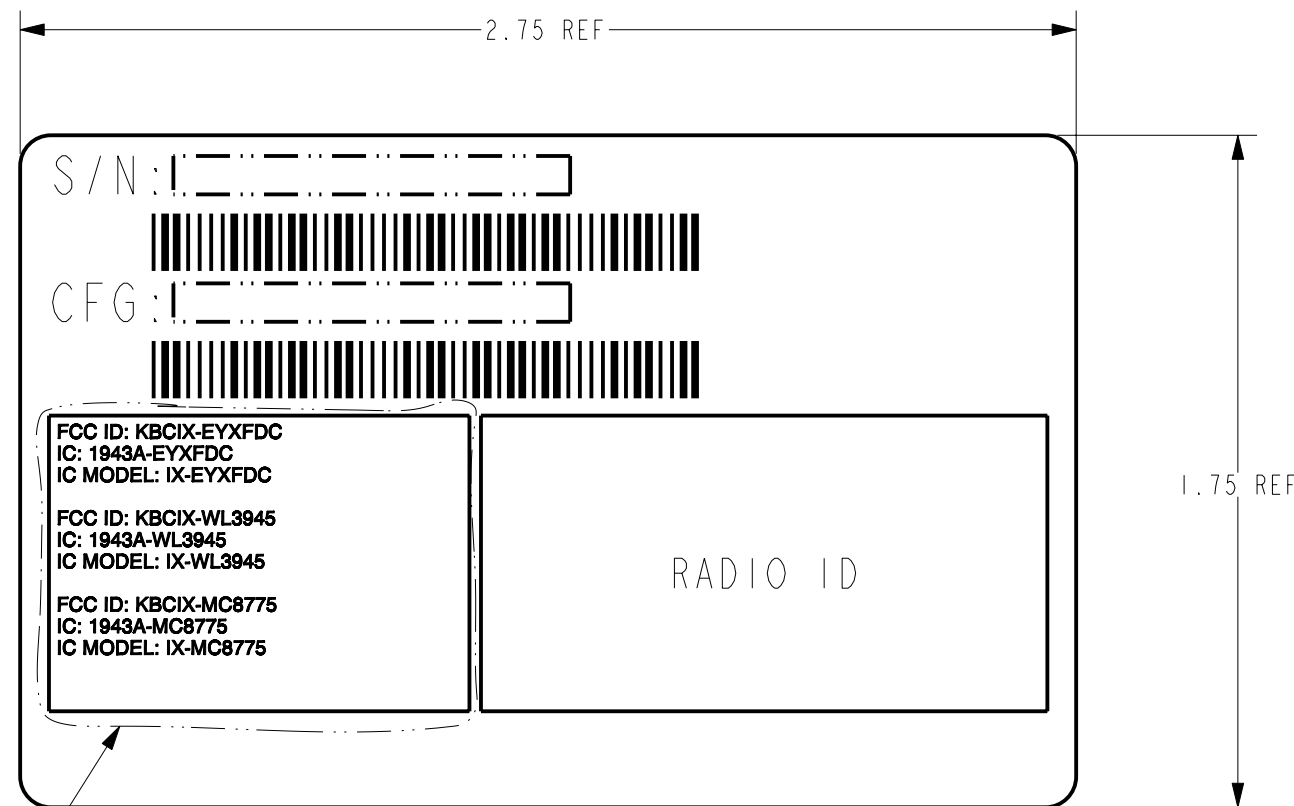
DETAIL A
SCALE 4.000

RADIO CONFIGURATION					
INTEL WLAN 3945					
MC-8775 WAN					
UNLESS OTHERWISE SPECIFIED, DIMENSIONS IN INCHES DO NOT SCALE DRAWING			.TOL. EXCEPT AS NOTED .XX ± 0.01 INCH .XXX ± 0.005 INCH ANG. = 1.0°		DRAFTER K. MORDEN
NOTICE OF PROPRIETARY INFORMATION INFORMATION CONTAINED HEREIN IS PROPRIETARY AND IS PROPERTY OF GENERAL DYNAMICS ITRONIX WHERE FURNISHED WITH A PROPOSAL. THE RECIPIENT SHALL USE IT SOLELY TO EVALUATE THE PROPOSAL. WHERE FURNISHED TO A CUSTOMER IT SHALL BE USED SOLELY FOR PURPOSES OF INSPECTION INSTALLATION, OR MAINTENANCE. WHERE FURNISHED TO A SUPPLIER, IT SHALL BE USED SOLELY IN THE PERFORMANCE OF THE WORK CONTRACTED FOR BY THIS COMPANY. THE INFORMATION SHALL NOT BE USED OR DISCLOSED BY THE RECIPIENT FOR ANY OTHER PURPOSE WHATSOEVER.			THIRD ANGLE PROJECTION		DATE 6-27-08
GENERAL DYNAMICS Itronix 12825 E MIRABEAU PARKWAY SPOKANE VALLEY, WA 99216-1464			ENGINEER		DATE
			MFG. ENG		DATE
-		I	KM	PROTOTYPE RELEASE	
ZONE	REV.	ECO	BY	DESCRIPTION OF CHANGE	
APP.	DATE	DESCRIPTION			
L	M	N	O	LBL, IX750, WL3945, MC8775	
P	Q	R	S	SIZE	DWG. NO
T	U	V	W	B	26-1124-001R
X	Y	Z	AA	SCALE	SHEET
AB	AC	AD	AE	2.000	1 OF 1
AF	AG	AH	AI	REV	I

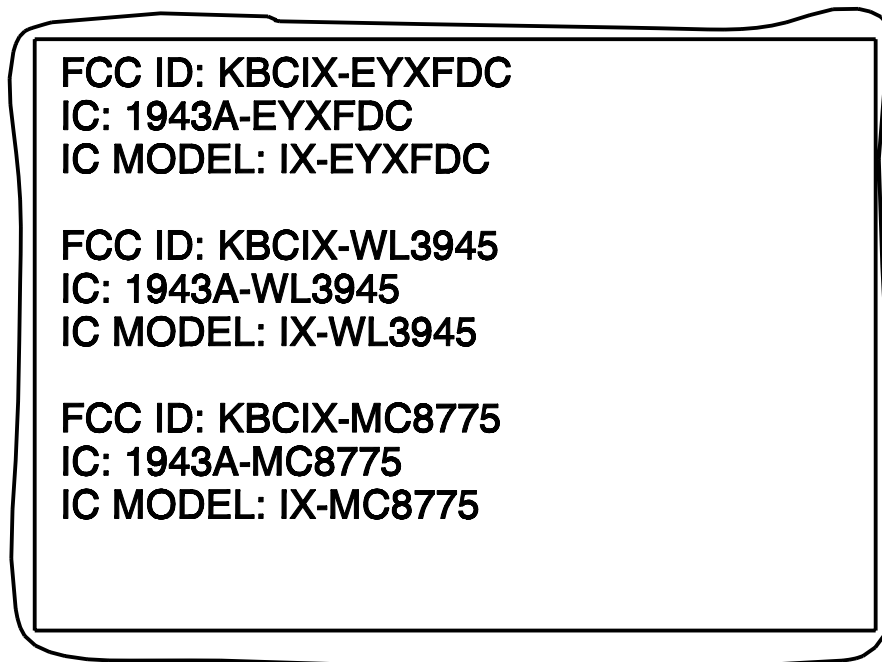
MODEL	PART NUMBER	OBJECT NAME	REV	VER	REL
	26-1123-001R	LBL-IX750-BT-WL3945-8775_1	***	***	***
DRAWING	26-1123-001R	26-1123-001R.1.750-BT-3945-8775	-	-	-

NOTES: (UNLESS OTHERWISE SPECIFIED).

- FOR LABEL MANUFACTURE SEE ITRONIX DRAWING 26-0637-000R.
- THIS PART/ASSEMBLY SHALL MEET ROHS COMPLIANCE REQUIREMENTS AS SPECIFIED IN: DIRECTIVE 2002/95/EC OF THE EUROPEAN PARLIAMENT AND OF THE COUNCIL OF 27 JANUARY 2003 ON THE RESTRICTION OF THE USE OF CERTAIN HAZARDOUS SUBSTANCES IN ELECTRICAL AND ELECTRONIC EQUIPMENT.
- PART(S) SHIPPED TO GD-ITRONIX SHALL BE PACKAGED FOR SHIPMENT AND/OR STORAGE IN A CLEAN PROTECTIVE CONTAINER AND BAGGED PROPERLY PER CURRENT GD-ITRONIX PACKAGING AND SHIPPING SPECIFICATION.



SEE DETAIL A



DETAIL A
SCALE 4.000

RADIO CONFIGURATION			
BT MODULE			
INTEL WLAN 3945			
MC-8775 WAN			
-	I	KM	PROTOTYPE RELEASE
ZONE	REV.	ECO	BY
DESCRIPTION OF CHANGE			APP. DATE
UNLESS OTHERWISE SPECIFIED, DIMENSIONS IN INCHES DO NOT SCALE DRAWING			
NOTICE OF PROPRIETARY INFORMATION INFORMATION CONTAINED HEREIN IS PROPRIETARY AND IS PROPERTY OF GENERAL DYNAMICS ITRONIX WHERE FURNISHED WITH A PROPOSAL. THE RECIPIENT SHALL USE IT SOLELY TO EVALUATE THE PROPOSAL. WHERE FURNISHED TO A CUSTOMER IT SHALL BE USED SOLELY FOR PURPOSES OF INSPECTION INSTALLATION, OR MAINTENANCE. WHERE FURNISHED TO A SUPPLIER, IT SHALL BE USED SOLELY IN THE PERFORMANCE OF THE WORK CONTRACTED FOR BY THIS COMPANY. THE INFORMATION SHALL NOT BE USED OR DISCLOSED BY THE RECIPIENT FOR ANY OTHER PURPOSE WHATSOEVER.		.TOL. EXCEPT AS NOTED .XX ± 0.01 INCH .XXX ± 0.005 INCH ANG. = 1.0°	DRAFTER K. MORDEN DATE 6-17-08
THIRD ANGLE PROJECTION	QA/IOC	DATE	DESCRIPTION LBL, IX750, BT, WL3945, MC8775
GENERAL DYNAMICS Itronix 12825 E MIRABEAU PARKWAY SPOKANE VALLEY, WA 99216-1464	ENGINEER	DATE	SIZE B
	MFG. ENG	DATE	DWG. NO 26-1123-001R
			SCALE 2.000
			SHEET 1 OF 1
			REV 1