



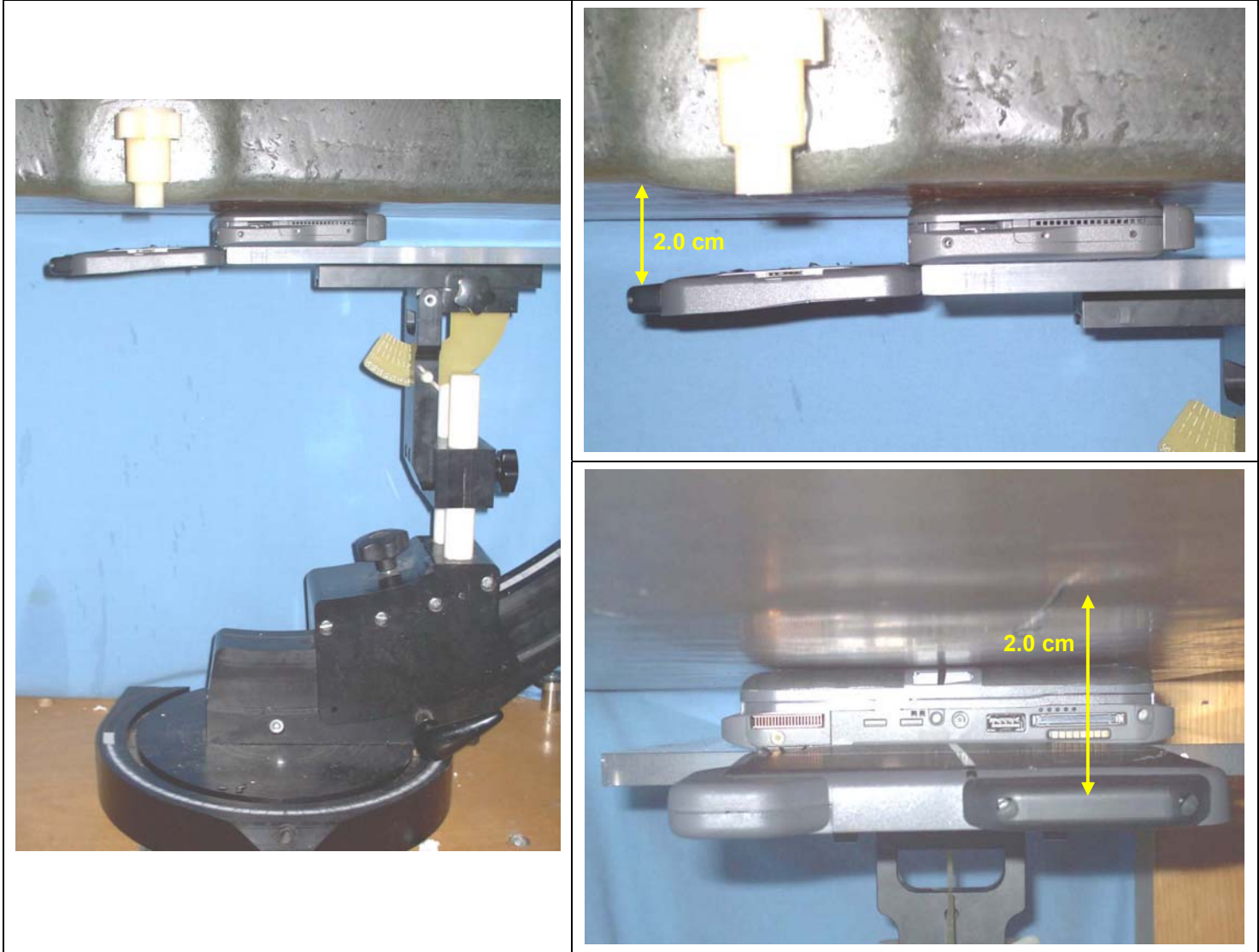
	<u>Date(s) of Evaluation</u> May 12 & 14, 2008	<u>Test Report Serial No.</u> 050708KBC-T903-S24G	<u>Test Report Revision No.</u> Rev. 1.0 (Initial Release)	 Test Lab Certificate No. 2470.01
	<u>Test Report Issue Date</u> July 08, 2008	<u>Description of Test(s)</u> Specific Absorption Rate	<u>RF Exposure Category</u> General Population	

APPENDIX D - SAR TEST SETUP & DUT PHOTOGRAPHS

Applicant:	GD Itronix Corporation	FCC ID:	KBCIX-MC8775	IC:	1943A-MC8775	
Model(s):	IX-MC8775	DUT Type:	Dual-Band GPRS/EDGE/WCDMA Card in IX750 Handheld PC			
2008 Celltech Labs Inc.		This document is not to be reproduced in whole or in part without the prior written permission of Celltech Labs Inc.				Page 48 of 52

	<u>Date(s) of Evaluation</u> May 12 & 14, 2008	<u>Test Report Serial No.</u> 050708KBC-T903-S24G	<u>Test Report Revision No.</u> Rev. 1.0 (Initial Release)	 Test Lab Certificate No. 2470.01
	<u>Test Report Issue Date</u> July 08, 2008	<u>Description of Test(s)</u> Specific Absorption Rate	<u>RF Exposure Category</u> General Population	

BODY SAR TEST SETUP PHOTOGRAPHS
2.0 cm Spacing from DUT Antenna to Planar Phantom
Bottom Side of PC Touching Phantom - LCD Lid Extended



Applicant:	GD Itronix Corporation	FCC ID:	KBCIX-MC8775	IC:	1943A-MC8775	GENERAL DYNAMICS <small>Itronix</small>
Model(s):	IX-MC8775	DUT Type:	Dual-Band GPRS/EDGE/WCDMA Card in IX750 Handheld PC			
2008 Celltech Labs Inc.		This document is not to be reproduced in whole or in part without the prior written permission of Celltech Labs Inc.				Page 49 of 52

EXTERNAL DUT PHOTOGRAPHS



Front of IX750 Rugged Handheld PC with LCD Display Open



IX-MC8775 Antenna Housing - Top Right Side of LCD Display

EXTERNAL DUT PHOTOGRAPHS



IX750 LCD Display - Front Side



IX750 LCD Display - Back Side

EXTERNAL DUT PHOTOGRAPHS



Left Side of IX750 PC - LCD Display Open



Left Side of IX750 PC - LCD Display Open

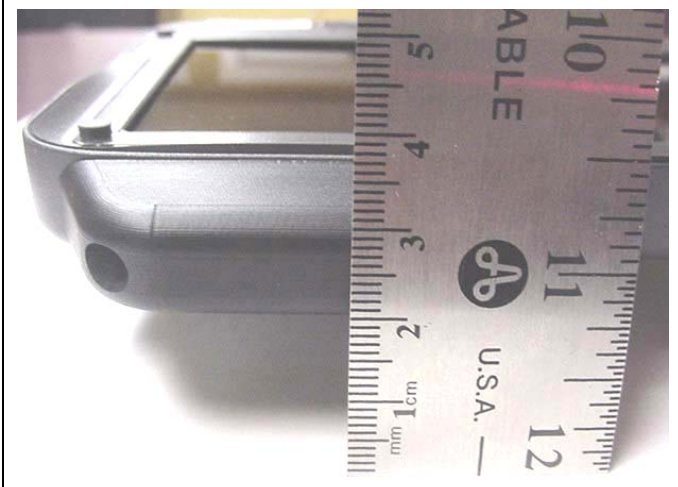
EXTERNAL DUT PHOTOGRAPHS



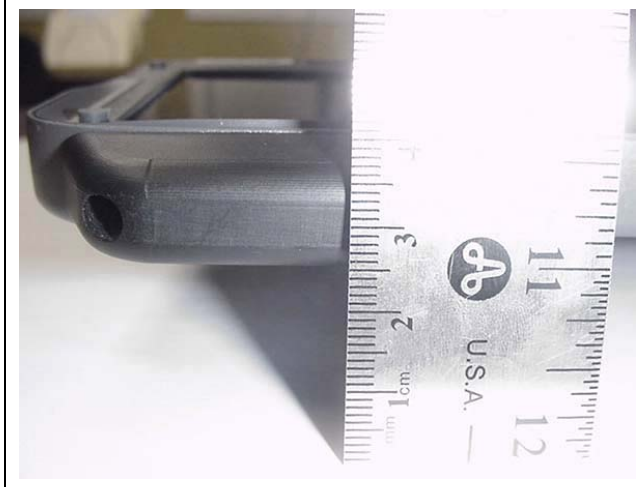
Left Side of IX750 PC with Standard Capacity Lithium-ion Battery - LCD Display Fully Extended



Right Side of IX750 PC with Standard Capacity Lithium-ion Battery - LCD Display Fully Extended



2.0 cm Antenna Spacing - LCD Display Fully Extended (IX750 PC with Standard Capacity Lithium-ion Battery)



2.5 cm Antenna Spacing - LCD Display Fully Extended (IX750 PC with Extended Capacity Lithium-ion Battery)

EXTERNAL DUT PHOTOGRAPHS



Left Side of IX750 PC with Extended Capacity Lithium-ion Battery



IX750 PC with Extended Capacity Lithium-ion Battery



Extended Capacity Lithium-ion Battery

Standard Capacity Lithium-ion Battery

EXTERNAL DUT PHOTOGRAPHS



Front Side of IX750 PC - LCD Display Closed



Back Side of IX750 PC - LCD Display Closed

EXTERNAL DUT PHOTOGRAPHS



Top Side of IX750 PC - LCD Display Closed



Left Side of IX750 PC - LCD Display Closed



Right Side of IX750 PC - LCD Display Closed

EXTERNAL DUT PHOTOGRAPHS



Bottom Side of IX750 PC with Standard Capacity Lithium-ion Battery



Front Side of Standard Capacity Lithium-ion Battery



Back Side of Standard Capacity Lithium-ion Battery

EXTERNAL DUT PHOTOGRAPHS



Bottom Side of IX750 PC with Battery Removed



Front Side of Extended Capacity Lithium-ion Battery

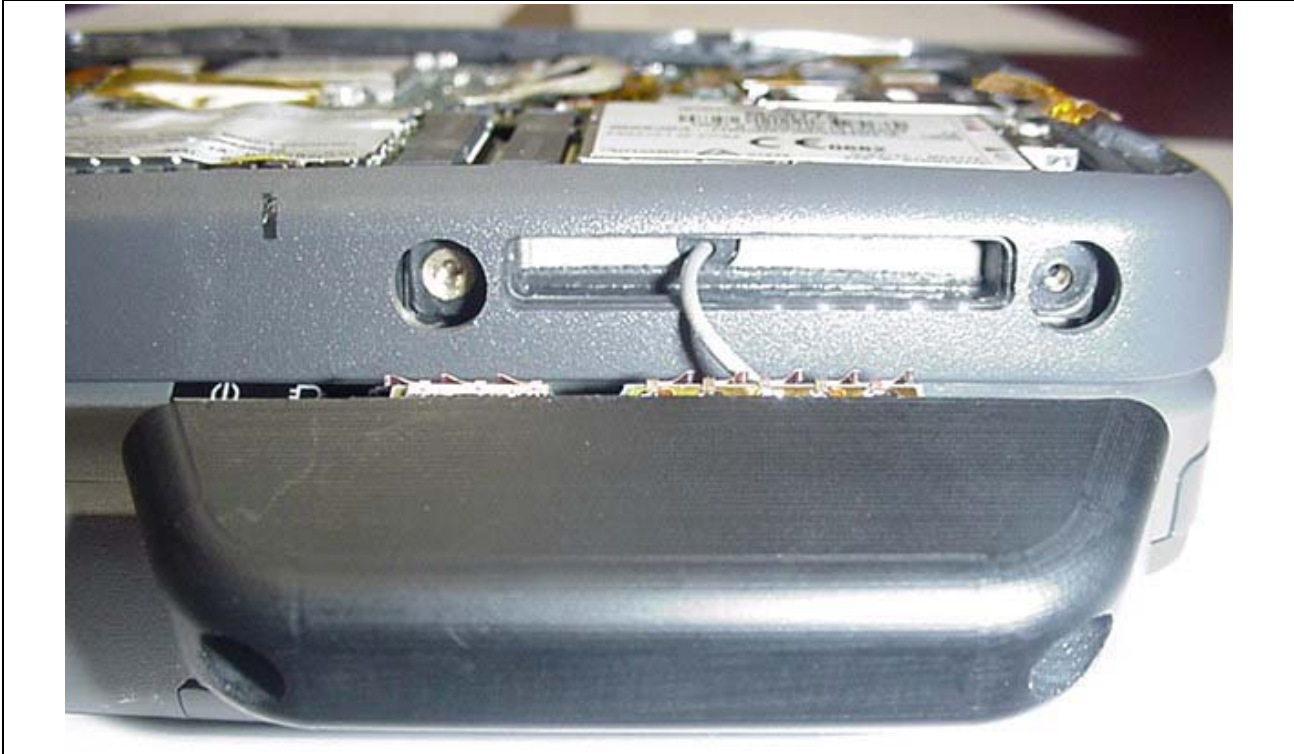


Back Side of Extended Capacity Lithium-ion Battery

INTERNAL DUT PHOTOGRAPHS



IX-MC8775 Antenna and Housing - Top View

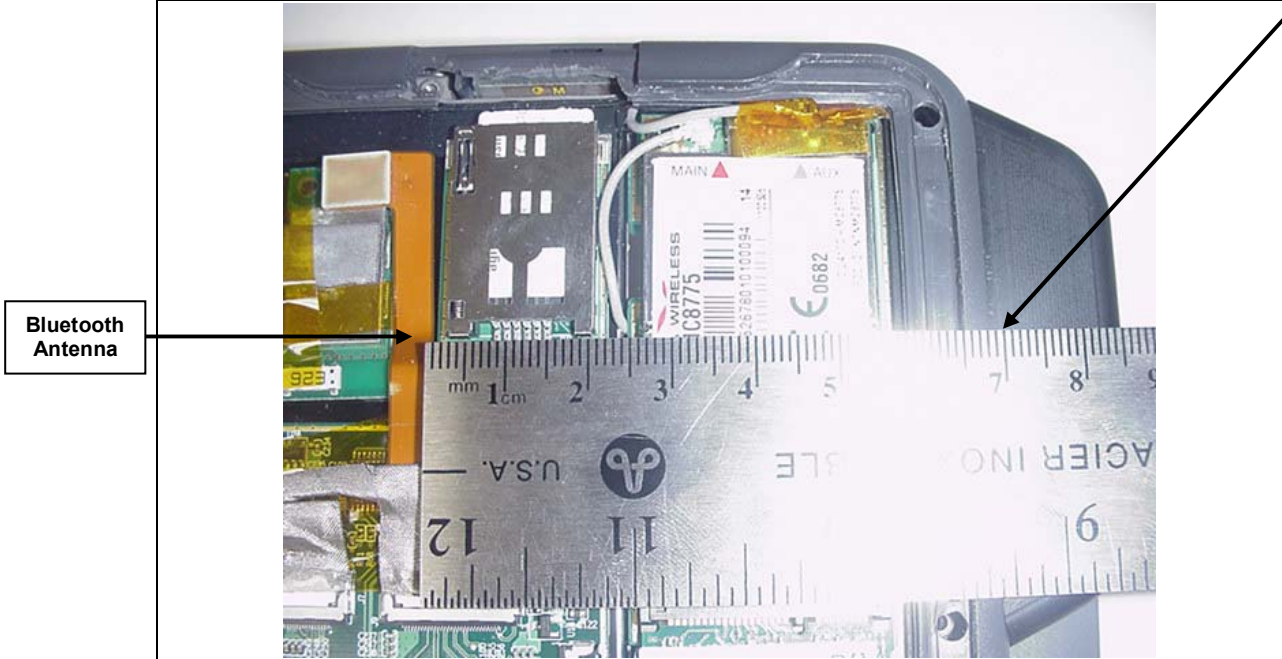


IX-MC8775 Antenna and Housing - Side View

INTERNAL DUT PHOTOGRAPHS

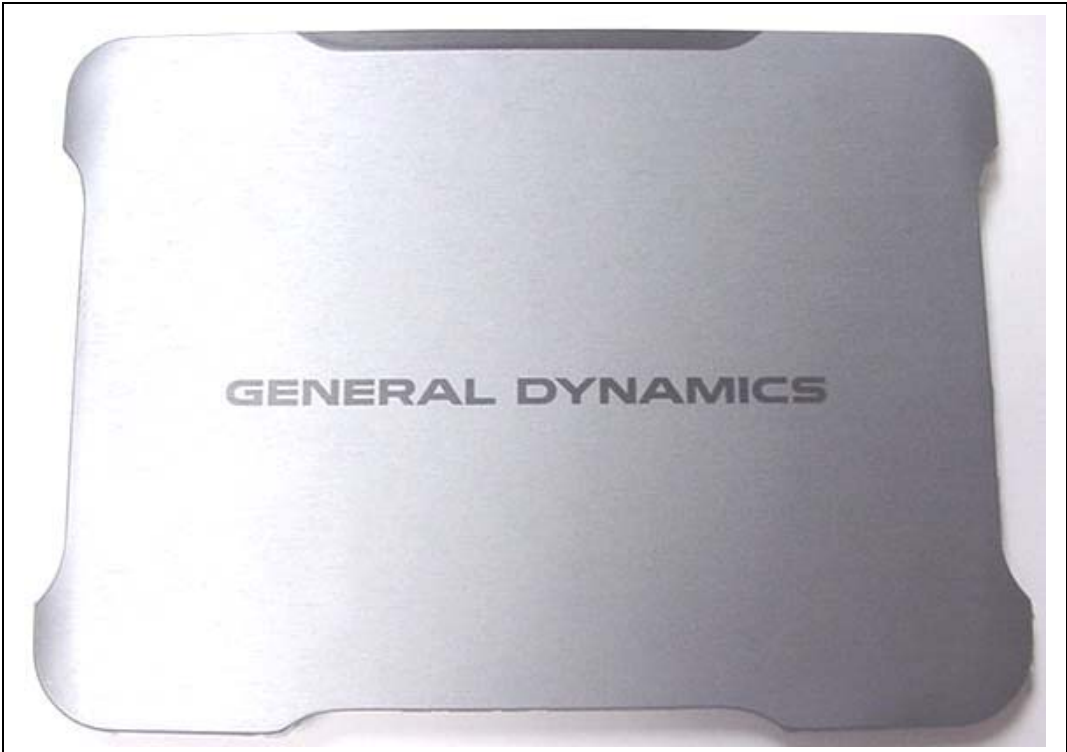


IX750 PC with Back Side of LCD Display Cover Removed



Spacing between Co-Transmitting Bluetooth Antenna and IX-MC8775 Internal Antenna (> 5.0 cm)

INTERNAL DUT PHOTOGRAPHS



LCD Display Back Side Cover - Front Side



LCD Display Back Side Cover - Back Side

INTERNAL DUT PHOTOGRAPHS

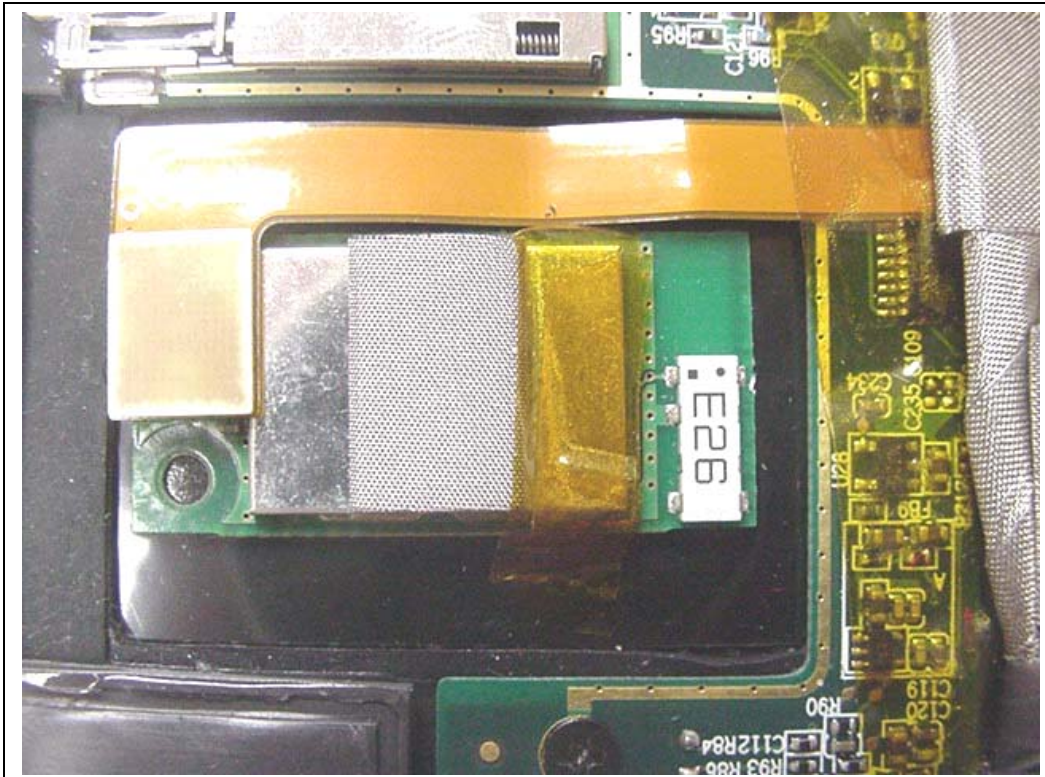


IX-MC8775 GPRS/EDGE/WCDMA Mini-PCI Express Card and Antenna installed in IX750 PC



IX-MC8775 GPRS/EDGE/WCDMA Mini-PCI Express Card installed in IX750 PC

INTERNAL DUT PHOTOGRAPHS



Co-located Bluetooth Module Model: IX-EYXFD



Co-located WLAN Mini-PCI Express Card Model: IX-WL3945