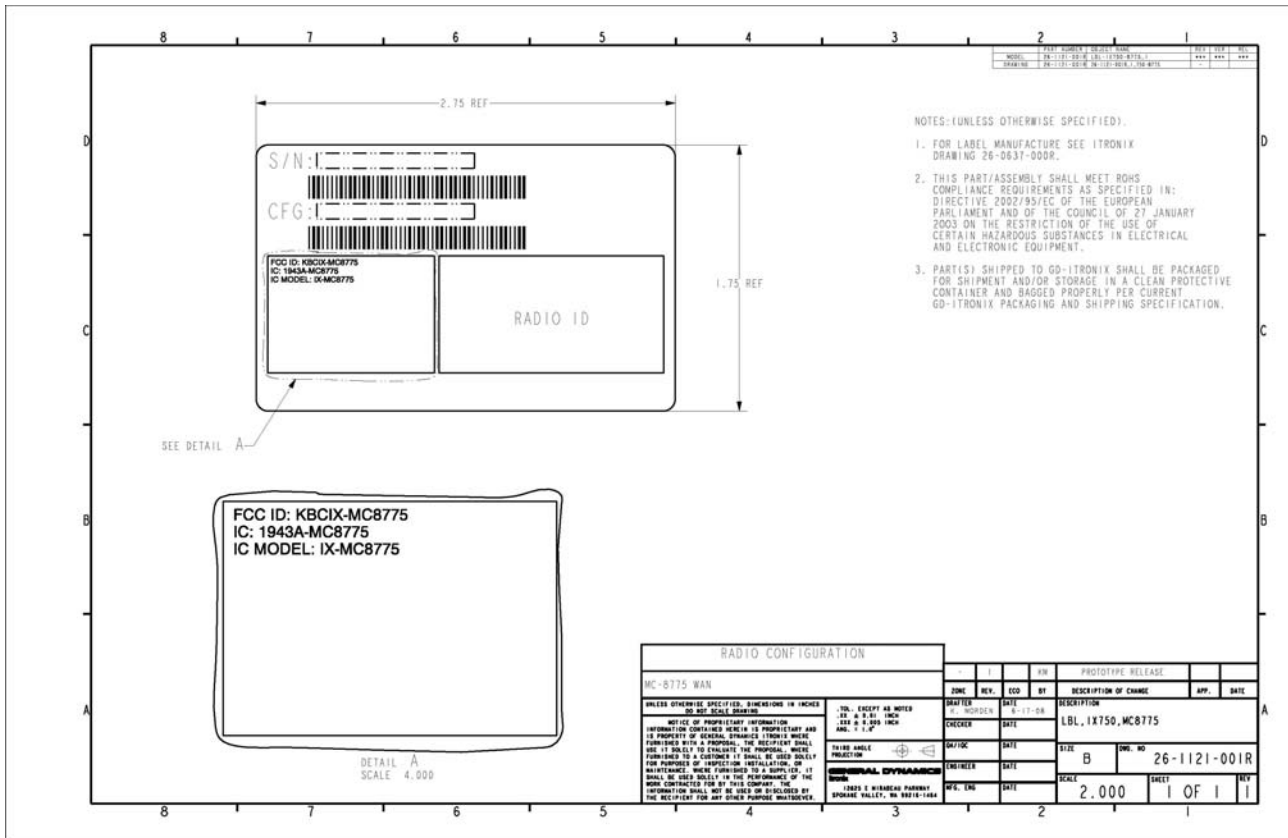


**FCC ID label facsimile for the FCC ID: KBCIX-MC8775 and label location on the IX750**

FCC ID Label Facsimile shown below:



The following pages contain:

- 1.) Photos of the ID label locations, internally located, user accessible on the IX750
- 2.) Facsimile of the FCC Part 15 Compliance Statement
- 3.) Two facsimile FCC/IC Identifier labels for Co-located radios

**Label  
Remove Hard Drive  
Cartridge for  
Agency Information**

**Label  
FCC ID  
IC ID**

**Label  
FCC DoC**

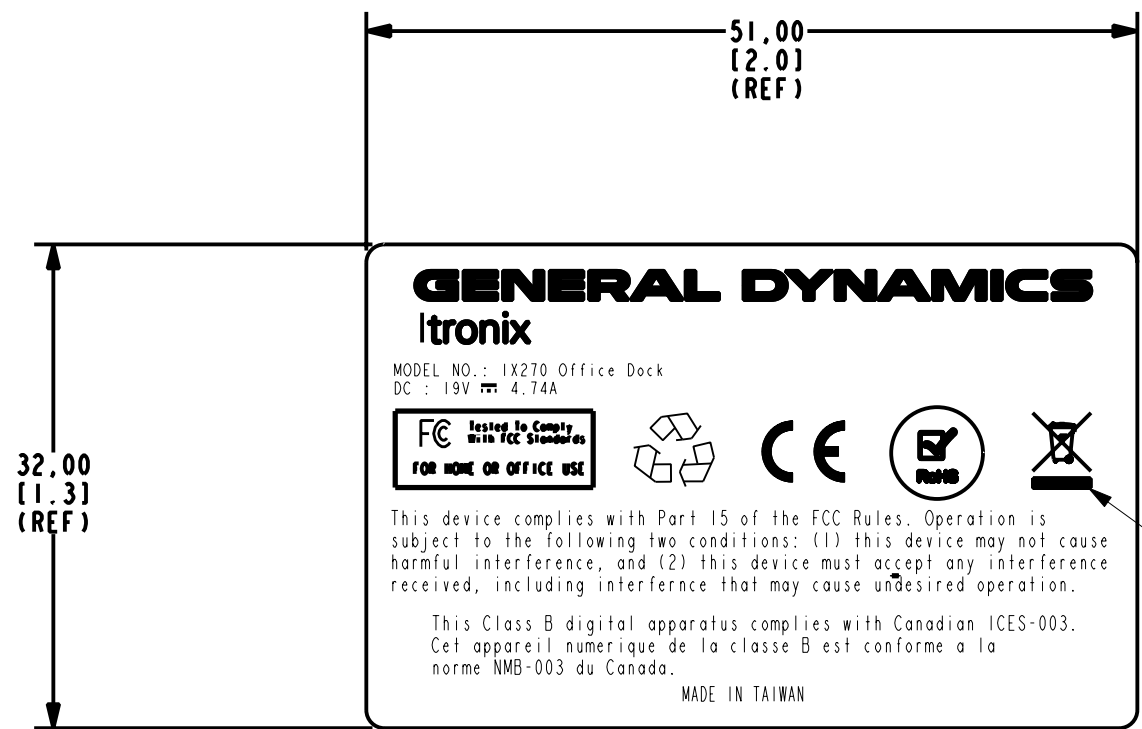


**Battery Pack  
Removed Using  
Thumb latches**

**Hard Disk Cartridge  
Removed Using  
Thumb latch**

**This is the Base configuration FCC Label Placement for manufacturing consistency on all hardware options. The FCC ID is easily observed by removing the Battery with thumbs latch and the hard Disk Cartridge thumb latch.**

MODEL	PART NUMBER	OBJECT NAME	REV	VER	REL
26-1043-001R	26-1043-001R	26-1043-001R			
DRAWING	26-1043-001R	26-1043-001R.A.LBL-FC-APPD-US-8D			



NOTES: (UNLESS OTHERWISE SPECIFIED).

- MATERIAL: 3M 7818 MATTE SILVER POLYESTER W/#310 ACRYLIC ADHESIVE.
- PRINTING: INK, ELECTRONIC IMAGING INC. #T80433074 OR EQUIV.
- ALL MATERIAL MUST BE UL AND CSA APPROVED AND VENDOR MUST BE UL AND CSA RECOGNIZED.
- SIZE OF LOGO TO MEET WEEE STANDARDS.
- THIS PART/ASSEMBLY SHALL MEET ROHS COMPLIANCE REQUIREMENTS AS SPECIFIED IN: DIRECTIVE 2002/95/EC OF THE EUROPEAN PARLIAMENT AND OF THE COUNCIL OF 27 JANUARY 2003 ON THE RESTRICTION OF THE USE OF CERTAIN HAZARDOUS SUBSTANCES IN ELECTRICAL AND ELECTRONIC EQUIPMENT.
- PART(S) SHIPPED TO ITRONIX SHALL BE PACKAGED FOR SHIPMENT AND/OR STORAGE IN A CLEAN PROTECTIVE CONTAINER PER ITRONIX PACKAGING AND SHIPPING SPEC. TSP-PACK-741. IF A BAG IS USED IT MUST BE NON-STATIC GENERATING.

UNLESS OTHERWISE SPECIFIED, DIMENSIONS IN MILLIMETERS  
 DO NOT SCALE DRAWING

NOTICE OF PROPRIETARY INFORMATION  
 INFORMATION CONTAINED HEREIN IS PROPRIETARY AND IS PROPERTY OF GENERAL DYNAMICS ITRONIX WHERE FURNISHED WITH A PROPOSAL. THE RECIPIENT SHALL USE IT SOLELY TO EVALUATE THE PROPOSAL. WHERE FURNISHED TO A CUSTOMER IT SHALL BE USED SOLELY FOR PURPOSES OF INSPECTION INSTALLATION, OR MAINTENANCE. WHERE FURNISHED TO A SUPPLIER, IT SHALL BE USED SOLELY IN THE PERFORMANCE OF THE WORK CONTRACTED FOR BY THIS COMPANY. THE INFORMATION SHALL NOT BE USED OR DISCLOSED BY THE RECIPIENT FOR ANY OTHER PURPOSE WHATSOEVER.

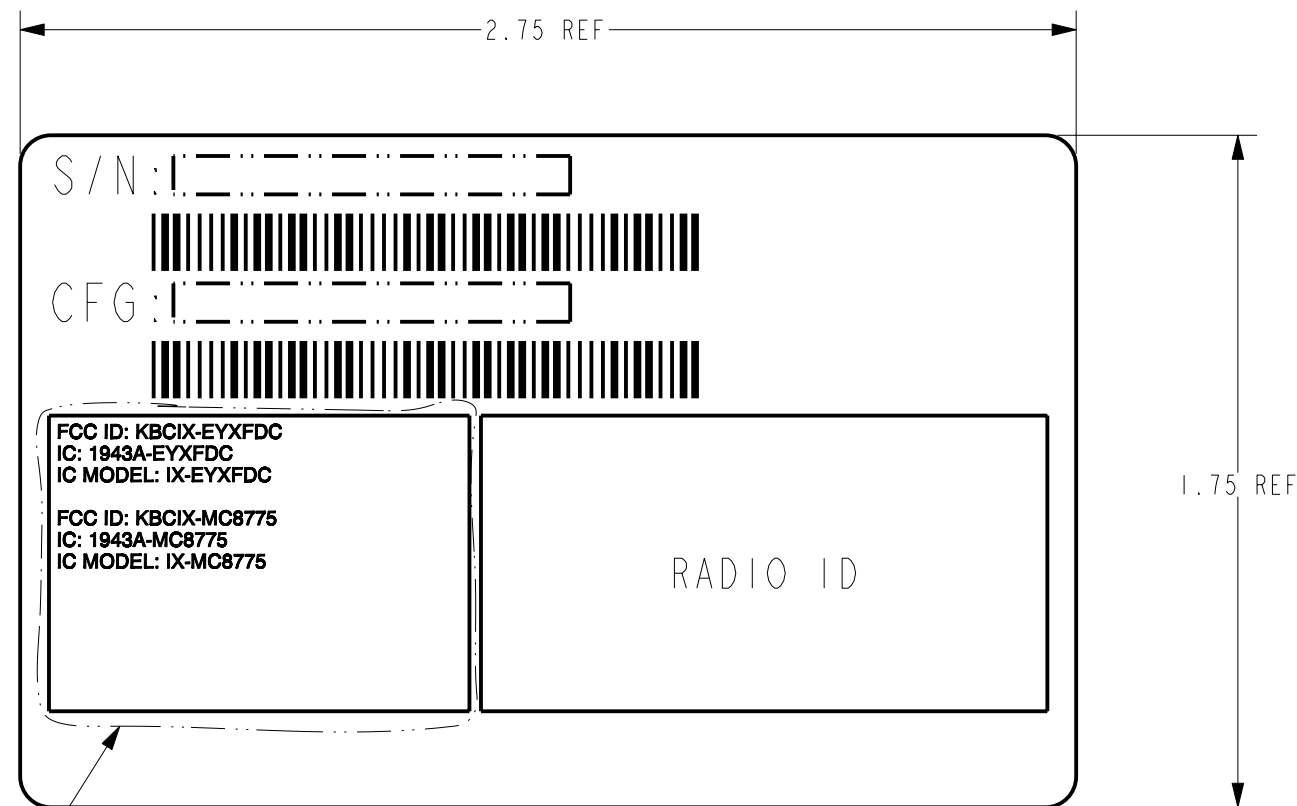
.TOL. EXCEPT AS NOTED  
 X ± 0.5 MM  
 X.X ± 0.25 MM  
 X.XX ± 0.125 MM  
 ANG. = 1.0°

THIRD ANGLE PROJECTION

**ITRONIX**  
 12825 E MIRABEAU PARKWAY  
 SPOKANE VALLEY, WA 99216-1464

ZONE	REV.	ECO	BY	DESCRIPTION OF CHANGE	APP.	DATE
-	I	TT	KM	PROTOTYPE RELEASE		
DRAFTER	K. MORDEN	DATE	7-26-07	DESCRIPTION		
CHECKER	J. DERTING	DATE	7-26-07	LBL, IX270, FCC APPD US		
ELEC. ENG		DATE		SIZE	DWG. NO	
MECH. ENG		DATE		B	26-1043-001R	
MFG. ENG		DATE		SCALE	SHEET	REV
				2.000	1 OF 1	1

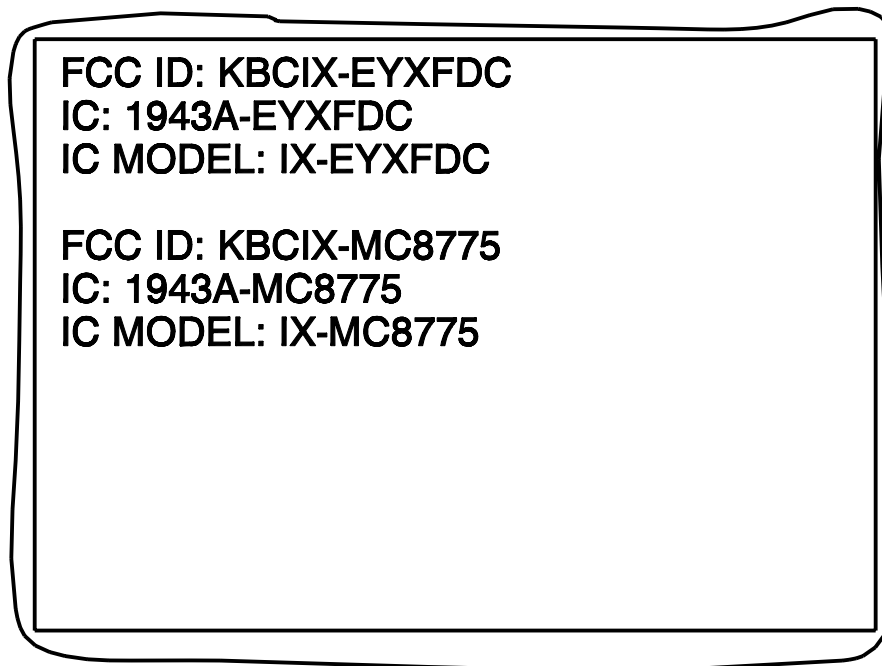
MODEL	PART NUMBER	OBJECT NAME	REV	VER	REL
	26-1122-001R	LBL-IX750-BT-8775	***	***	***
DRAWING	26-1122-001R	26-1122-001R.1.750-BT-8775	-		



NOTES: (UNLESS OTHERWISE SPECIFIED).

- FOR LABEL MANUFACTURE SEE ITRONIX DRAWING 26-0637-000R.
- THIS PART/ASSEMBLY SHALL MEET ROHS COMPLIANCE REQUIREMENTS AS SPECIFIED IN: DIRECTIVE 2002/95/EC OF THE EUROPEAN PARLIAMENT AND OF THE COUNCIL OF 27 JANUARY 2003 ON THE RESTRICTION OF THE USE OF CERTAIN HAZARDOUS SUBSTANCES IN ELECTRICAL AND ELECTRONIC EQUIPMENT.
- PART(S) SHIPPED TO GD-ITRONIX SHALL BE PACKAGED FOR SHIPMENT AND/OR STORAGE IN A CLEAN PROTECTIVE CONTAINER AND BAGGED PROPERLY PER CURRENT GD-ITRONIX PACKAGING AND SHIPPING SPECIFICATION.

SEE DETAIL A



DETAIL A  
SCALE 4.000

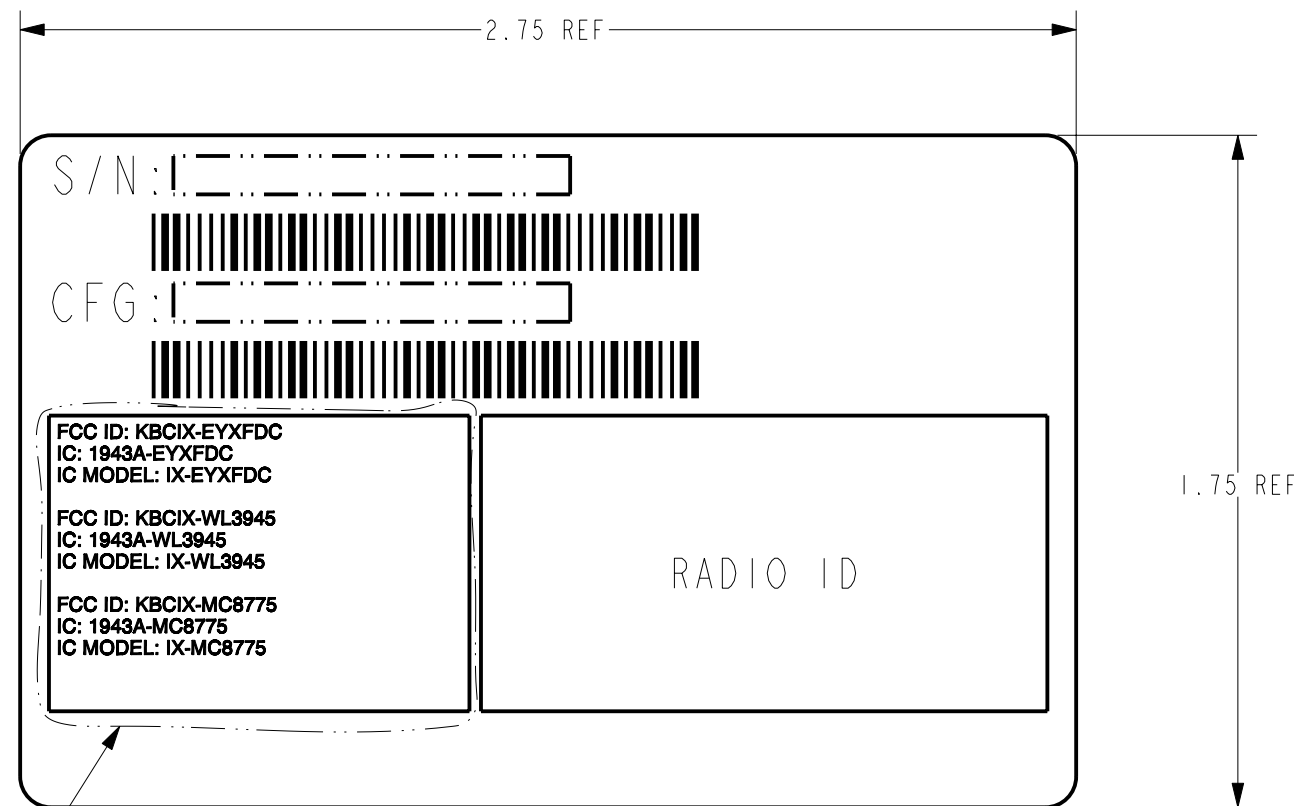
RADIO CONFIGURATION											
BT MODULE											
MC-8775 WAN											
UNLESS OTHERWISE SPECIFIED, DIMENSIONS IN INCHES DO NOT SCALE DRAWING				.TOL. EXCEPT AS NOTED .XX ± 0.01 INCH .XXX ± 0.005 INCH ANG. = 1.0°		DRAFTER K. MORDEN		DATE 6-17-08		-   I   KM   PROTOTYPE RELEASE	
NOTICE OF PROPRIETARY INFORMATION INFORMATION CONTAINED HEREIN IS PROPRIETARY AND IS PROPERTY OF GENERAL DYNAMICS ITRONIX WHERE FURNISHED WITH A PROPOSAL. THE RECIPIENT SHALL USE IT SOLELY TO EVALUATE THE PROPOSAL. WHERE FURNISHED TO A CUSTOMER IT SHALL BE USED SOLELY FOR PURPOSES OF INSPECTION INSTALLATION, OR MAINTENANCE. WHERE FURNISHED TO A SUPPLIER, IT SHALL BE USED SOLELY IN THE PERFORMANCE OF THE WORK CONTRACTED FOR BY THIS COMPANY. THE INFORMATION SHALL NOT BE USED OR DISCLOSED BY THE RECIPIENT FOR ANY OTHER PURPOSE WHATSOEVER.				THIRD ANGLE PROJECTION		QA/IOC		DATE		DESCRIPTION OF CHANGE	
GENERAL DYNAMICS Itronix 12825 E MIRABEAU PARKWAY SPOKANE VALLEY, WA 99216-1464				ENGINEER		DATE		DATE		DESCRIPTION LBL, IX750, BT, MC8775	
				MFG. ENG		DATE		DATE		APP.   DATE	
								SIZE B		DWG. NO 26-1122-001R	
								SCALE 2.000		SHEET 1 OF 1	
										REV 1	



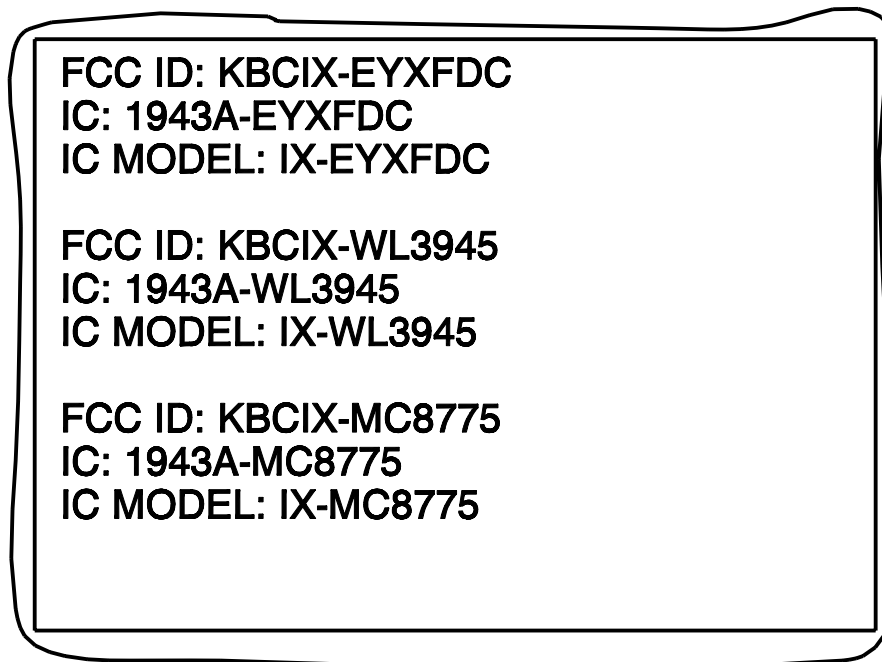
MODEL	PART NUMBER	OBJECT NAME	REV	VER	REL
	26-1123-001R	LBL-IX750-BT-WL3945-8775_1	***	***	***
DRAWING	26-1123-001R	26-1123-001R.1.750-BT-3945-8775	-	-	-

NOTES: (UNLESS OTHERWISE SPECIFIED).

- FOR LABEL MANUFACTURE SEE ITRONIX DRAWING 26-0637-000R.
- THIS PART/ASSEMBLY SHALL MEET ROHS COMPLIANCE REQUIREMENTS AS SPECIFIED IN: DIRECTIVE 2002/95/EC OF THE EUROPEAN PARLIAMENT AND OF THE COUNCIL OF 27 JANUARY 2003 ON THE RESTRICTION OF THE USE OF CERTAIN HAZARDOUS SUBSTANCES IN ELECTRICAL AND ELECTRONIC EQUIPMENT.
- PART(S) SHIPPED TO GD-ITRONIX SHALL BE PACKAGED FOR SHIPMENT AND/OR STORAGE IN A CLEAN PROTECTIVE CONTAINER AND BAGGED PROPERLY PER CURRENT GD-ITRONIX PACKAGING AND SHIPPING SPECIFICATION.



SEE DETAIL A



DETAIL A  
SCALE 4.000

RADIO CONFIGURATION	
BT MODULE	
INTEL WLAN 3945	
MC-8775 WAN	
UNLESS OTHERWISE SPECIFIED, DIMENSIONS IN INCHES DO NOT SCALE DRAWING	
NOTICE OF PROPRIETARY INFORMATION INFORMATION CONTAINED HEREIN IS PROPRIETARY AND IS PROPERTY OF GENERAL DYNAMICS ITRONIX WHERE FURNISHED WITH A PROPOSAL. THE RECIPIENT SHALL USE IT SOLELY TO EVALUATE THE PROPOSAL. WHERE FURNISHED TO A CUSTOMER IT SHALL BE USED SOLELY FOR PURPOSES OF INSPECTION INSTALLATION, OR MAINTENANCE. WHERE FURNISHED TO A SUPPLIER, IT SHALL BE USED SOLELY IN THE PERFORMANCE OF THE WORK CONTRACTED FOR BY THIS COMPANY. THE INFORMATION SHALL NOT BE USED OR DISCLOSED BY THE RECIPIENT FOR ANY OTHER PURPOSE WHATSOEVER.	
.TOL. EXCEPT AS NOTED .XX ± 0.01 INCH .XXX ± 0.005 INCH ANG. = 1.0°	THIRD ANGLE PROJECTION
<b>GENERAL DYNAMICS</b> <i>ITRONIX</i> 12825 E MIRABEAU PARKWAY SPOKANE VALLEY, WA 99216-1464	

ZONE	REV.	ECO	BY	DESCRIPTION OF CHANGE	APP.	DATE
-	I		KM	PROTOTYPE RELEASE		
DRAFTER				DATE		
K. MORDEN				6-17-08		
CHECKER				DATE		
DESCRIPTION				SIZE		
LBL, IX750, BT, WL3945, MC8775				B		
DWG. NO				26-1123-001R		
SCALE				SHEET		
2.000				1 OF 1		
				REV		
				I		