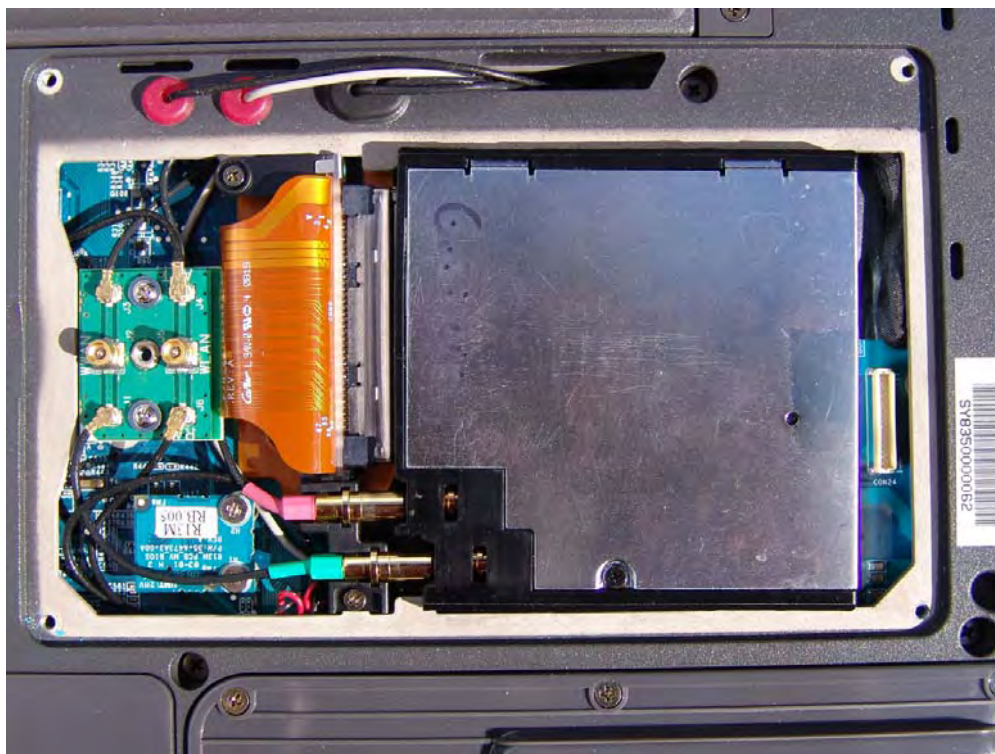


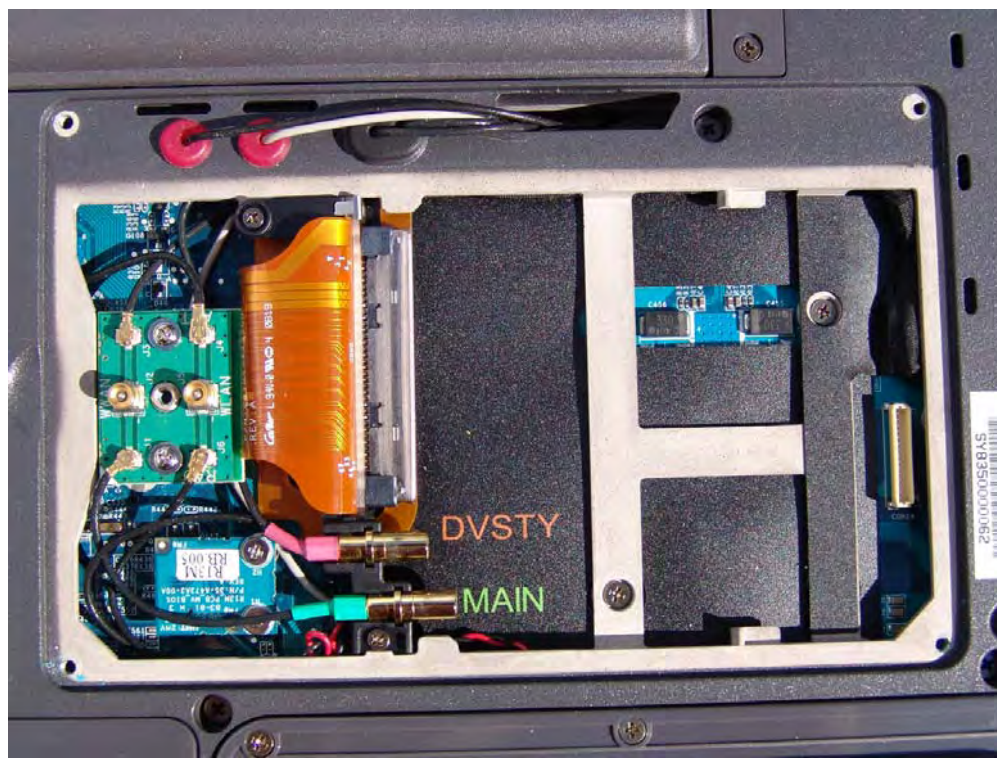
Bottom of GD8000, Host CRMA access cover location



Close up IX-GOB12, CRMA module installed in the GD8000



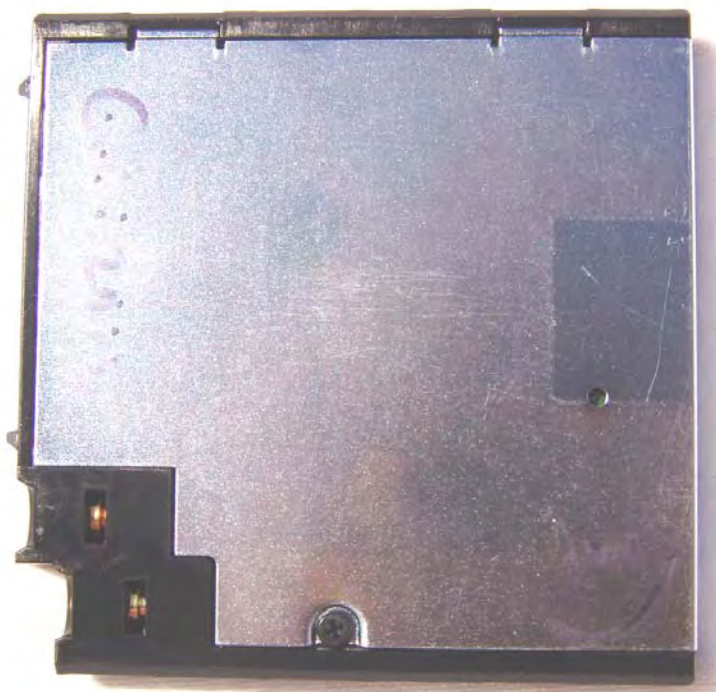
Close up of GD8000, CRMA module removed



IX-GOB12, CRMA module top view



**IX-GOB12, CRMA module bottom view**



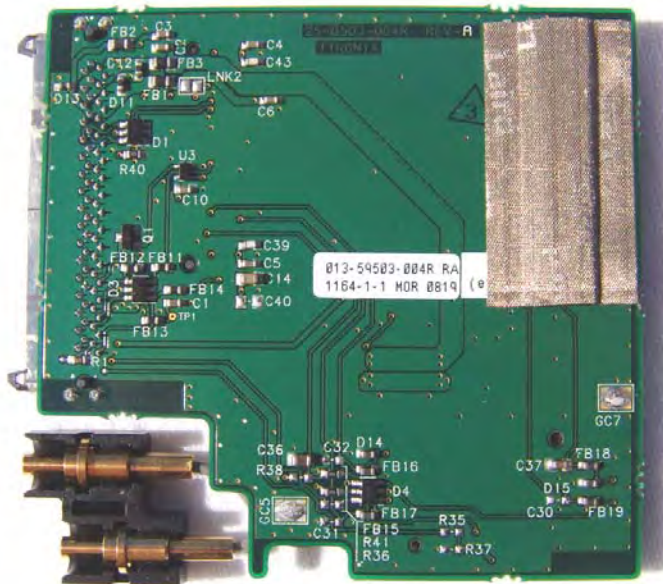
**Internal Photos of KBCIX-GOB12, CRMA, covers removed.**



Top View of the KBCIX-GOB12, CRMA PCB



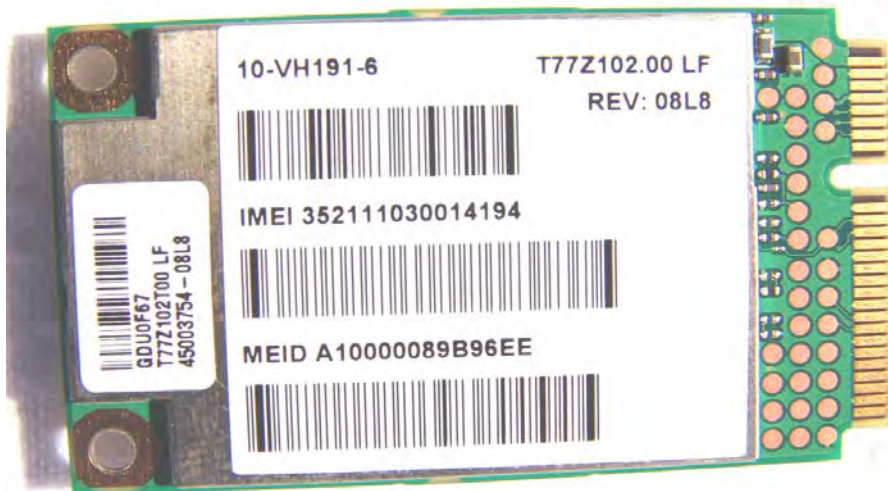
Bottom View of the KBCIX-GOB1, CRMA PCB



Top View of the GOBI2000 Module OEM FCC ID: J9CGOBI2000 embedded as the  
FCC ID: KBCIX-GOBI2 with Cover and OEM label



Bottom View of the J9CGOBI2000



Please refer to Internal Photos 2 of 2 for the GOBI200 Module, shields removed.

End