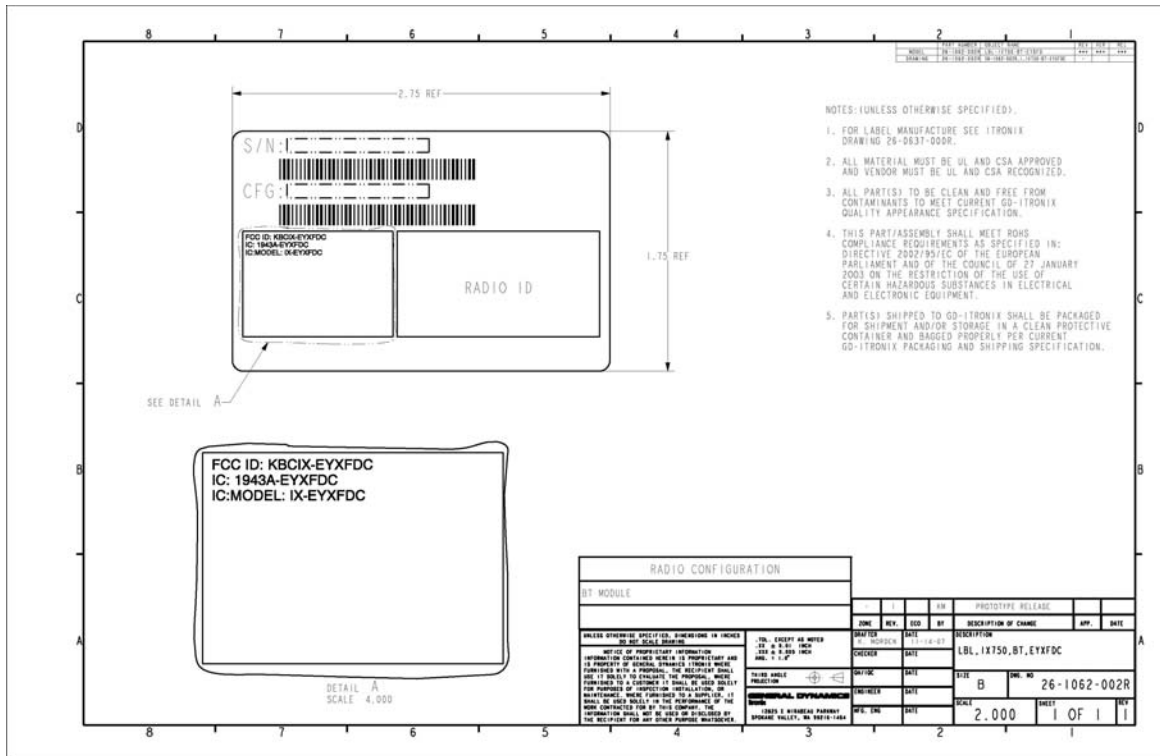


## FCC and IC ID Label Facsimiles for FCC ID: KBCIX-EYXFDC, Bluetooth And Label Location on the Host IX750

FCC and IC ID Label Facsimile shown below



The following pages contain:

- 1.) Photos of FCC/IC ID label location internally located on the IX750
- 2.) Facsimile of the FCC Part 15 Compliance Statement

## Identifier Label Location

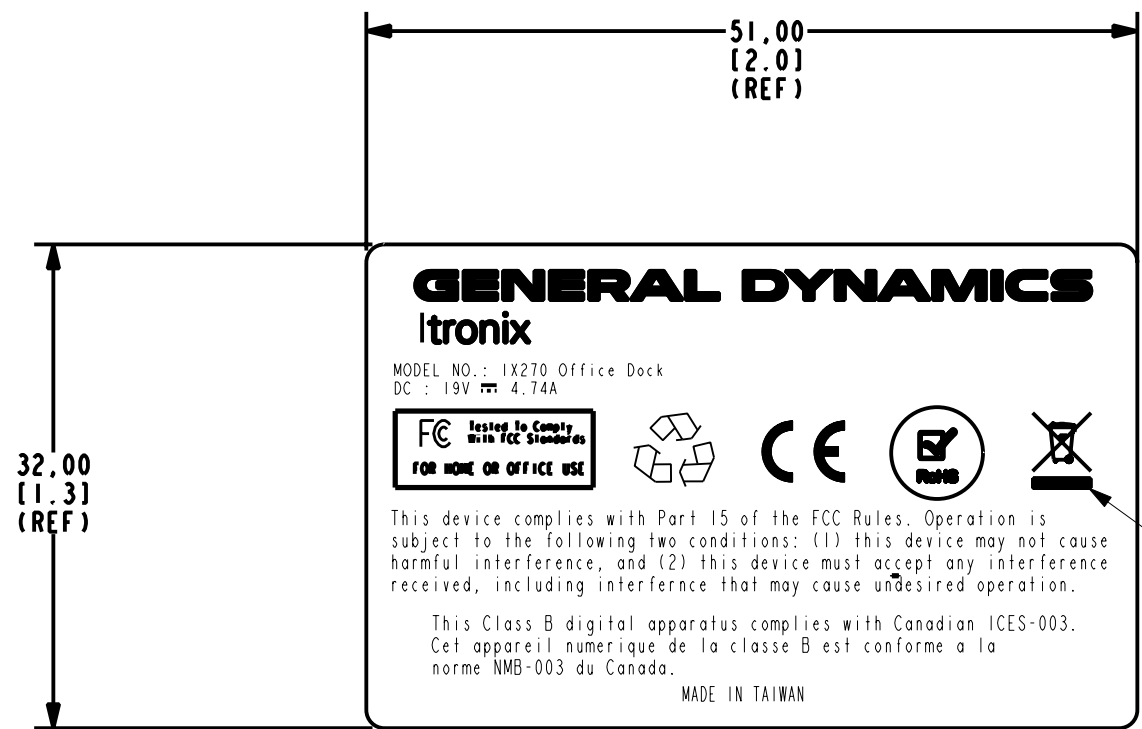
The label on the left side states: Remove hard drive to review FCC information. This label is visible when the batter is removed from the IX750. Hard drive is shown partially removed from the slot it is installed in covering the FCC ID label location.



Battery on the left below, bottom of the IX750 on the right hard drive removed



| MODEL        | PART NUMBER  | OBJECT NAME                      | REV | VER | REL |
|--------------|--------------|----------------------------------|-----|-----|-----|
| 26-1043-001R | 26-1043-001R | 26-1043-001R                     |     |     |     |
| DRAWING      | 26-1043-001R | 26-1043-001R.A.LBL-FC-APPD-US-8D |     |     |     |



- NOTES: (UNLESS OTHERWISE SPECIFIED).
- MATERIAL: 3M 7818 MATTE SILVER POLYESTER W/#310 ACRYLIC ADHESIVE.
  - PRINTING: INK, ELECTRONIC IMAGING INC. #T80433074 OR EQUIV.
  - ALL MATERIAL MUST BE UL AND CSA APPROVED AND VENDOR MUST BE UL AND CSA RECOGNIZED.
  - SIZE OF LOGO TO MEET WEEE STANDARDS.
  - THIS PART/ASSEMBLY SHALL MEET ROHS COMPLIANCE REQUIREMENTS AS SPECIFIED IN: DIRECTIVE 2002/95/EC OF THE EUROPEAN PARLIAMENT AND OF THE COUNCIL OF 27 JANUARY 2003 ON THE RESTRICTION OF THE USE OF CERTAIN HAZARDOUS SUBSTANCES IN ELECTRICAL AND ELECTRONIC EQUIPMENT.
  - PART(S) SHIPPED TO ITRONIX SHALL BE PACKAGED FOR SHIPMENT AND/OR STORAGE IN A CLEAN PROTECTIVE CONTAINER PER ITRONIX PACKAGING AND SHIPPING SPEC. TSP-PACK-741. IF A BAG IS USED IT MUST BE NON-STATIC GENERATING.

UNLESS OTHERWISE SPECIFIED, DIMENSIONS IN MILLIMETERS  
DO NOT SCALE DRAWING

NOTICE OF PROPRIETARY INFORMATION  
INFORMATION CONTAINED HEREIN IS PROPRIETARY AND IS PROPERTY OF GENERAL DYNAMICS ITRONIX WHERE FURNISHED WITH A PROPOSAL. THE RECIPIENT SHALL USE IT SOLELY TO EVALUATE THE PROPOSAL. WHERE FURNISHED TO A CUSTOMER IT SHALL BE USED SOLELY FOR PURPOSES OF INSPECTION INSTALLATION, OR MAINTENANCE. WHERE FURNISHED TO A SUPPLIER, IT SHALL BE USED SOLELY IN THE PERFORMANCE OF THE WORK CONTRACTED FOR BY THIS COMPANY. THE INFORMATION SHALL NOT BE USED OR DISCLOSED BY THE RECIPIENT FOR ANY OTHER PURPOSE WHATSOEVER.

.TOL. EXCEPT AS NOTED  
X ± 0.5 MM  
X.X ± 0.25 MM  
X.XX ± 0.125 MM  
ANG. = 1.0°

THIRD ANGLE PROJECTION

**ITRONIX**  
12825 E MIRABEAU PARKWAY  
SPOKANE VALLEY, WA 99216-1464

| ZONE      | REV.       | ECO  | BY      | DESCRIPTION OF CHANGE   | APP.         | DATE |
|-----------|------------|------|---------|-------------------------|--------------|------|
| -         | I          | TT   | KM      | PROTOTYPE RELEASE       |              |      |
| DRAFTER   | K. MORDEN  | DATE | 7-26-07 | DESCRIPTION             |              |      |
| CHECKER   | J. DERTING | DATE | 7-26-07 | LBL, IX270, FCC APPD US |              |      |
| ELEC. ENG |            | DATE |         | SIZE                    | DWG. NO      |      |
| MECH. ENG |            | DATE |         | B                       | 26-1043-001R |      |
| MFG. ENG  |            | DATE |         | SCALE                   | SHEET        | REV  |
|           |            |      |         | 2.000                   | 1 OF 1       | 1    |