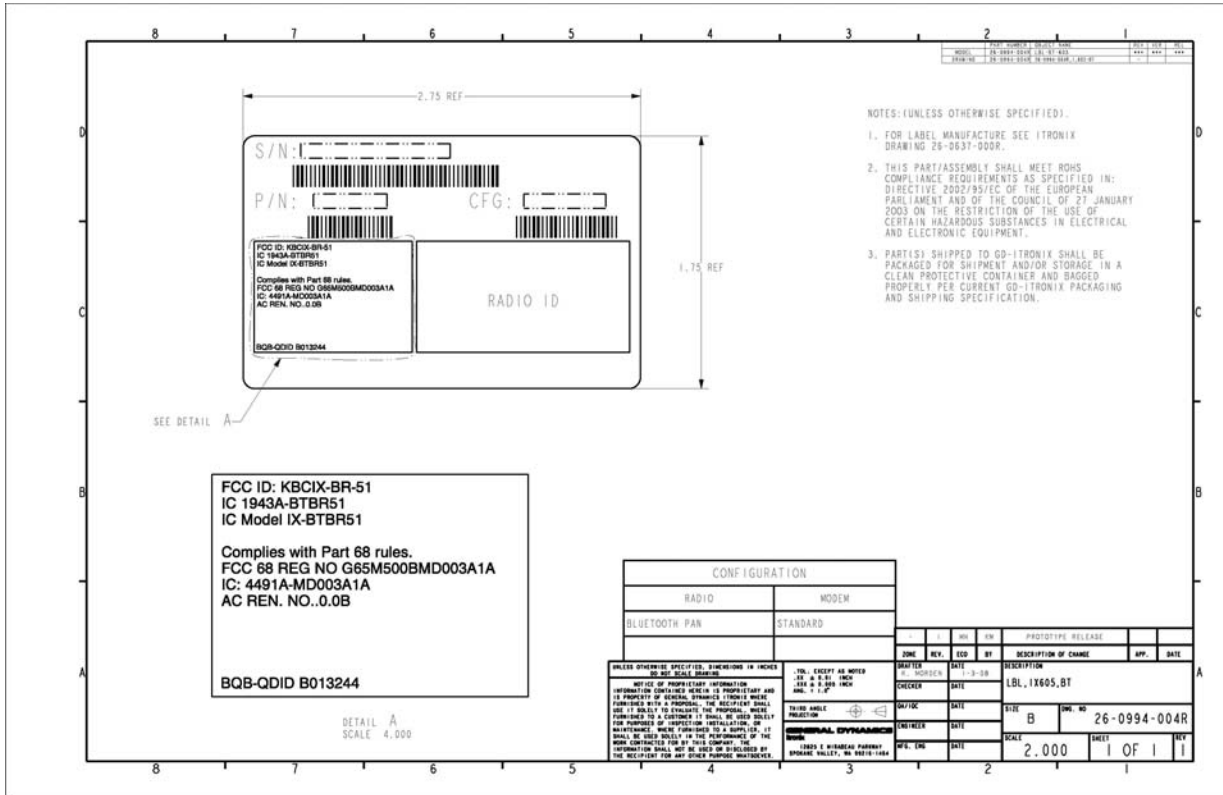
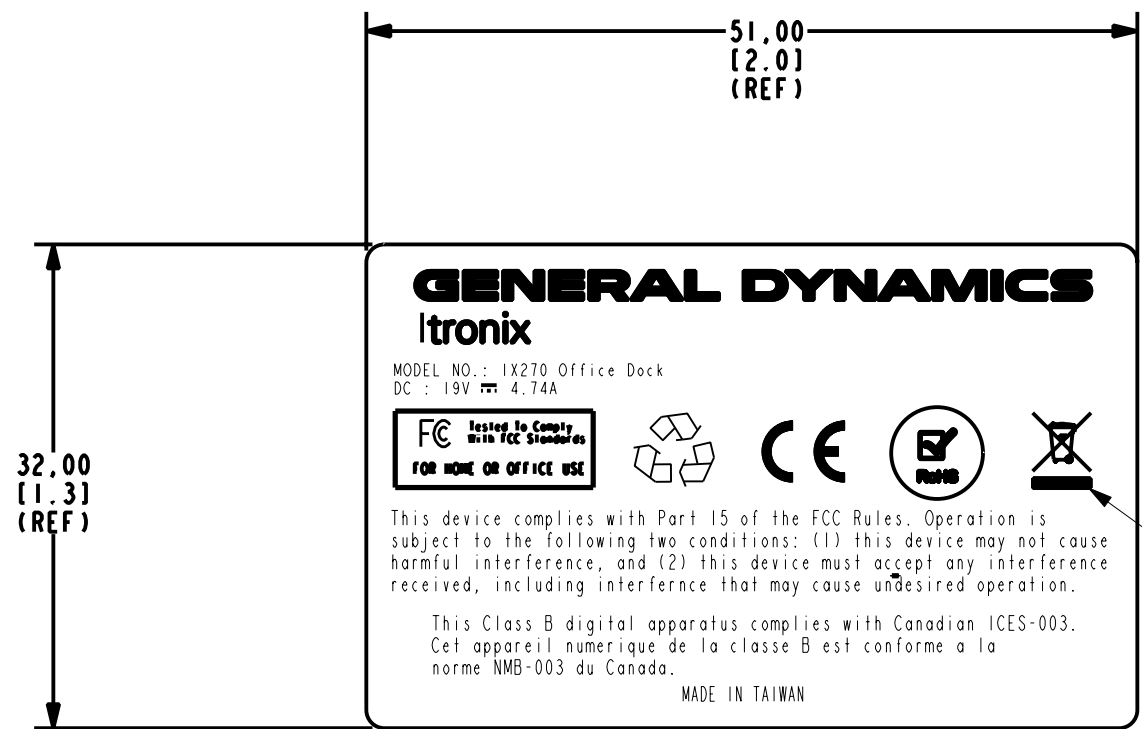


**FCC/IC ID Label Facsimiles for FCC ID: KBCIX-BR-51, IC ID: 1943A-BTBR51
And ID Label Location on the Host IX605**



Note: Part 15.19 Label Information, FCC ID label location on the IX605, and Co-Located FCC/IC Identifier labels for the KBCIX-MC5725 and KBCIX-4965AGN are located on the following pages.

MODEL	PART NUMBER	OBJECT NAME	REV	VER	REL
26-1043-001R	26-1043-001R	26-1043-001R			
DRAWING	26-1043-001R	26-1043-001R.A.LBL-FC-APPD-US-8D			



- NOTES: (UNLESS OTHERWISE SPECIFIED).
- MATERIAL: 3M 7818 MATTE SILVER POLYESTER W/#310 ACRYLIC ADHESIVE.
 - PRINTING: INK, ELECTRONIC IMAGING INC. #T80433074 OR EQUIV.
 - ALL MATERIAL MUST BE UL AND CSA APPROVED AND VENDOR MUST BE UL AND CSA RECOGNIZED.
 - SIZE OF LOGO TO MEET WEEE STANDARDS.
 - THIS PART/ASSEMBLY SHALL MEET ROHS COMPLIANCE REQUIREMENTS AS SPECIFIED IN: DIRECTIVE 2002/95/EC OF THE EUROPEAN PARLIAMENT AND OF THE COUNCIL OF 27 JANUARY 2003 ON THE RESTRICTION OF THE USE OF CERTAIN HAZARDOUS SUBSTANCES IN ELECTRICAL AND ELECTRONIC EQUIPMENT.
 - PART(S) SHIPPED TO ITRONIX SHALL BE PACKAGED FOR SHIPMENT AND/OR STORAGE IN A CLEAN PROTECTIVE CONTAINER PER ITRONIX PACKAGING AND SHIPPING SPEC. TSP-PACK-741. IF A BAG IS USED IT MUST BE NON-STATIC GENERATING.

UNLESS OTHERWISE SPECIFIED, DIMENSIONS IN MILLIMETERS DO NOT SCALE DRAWING

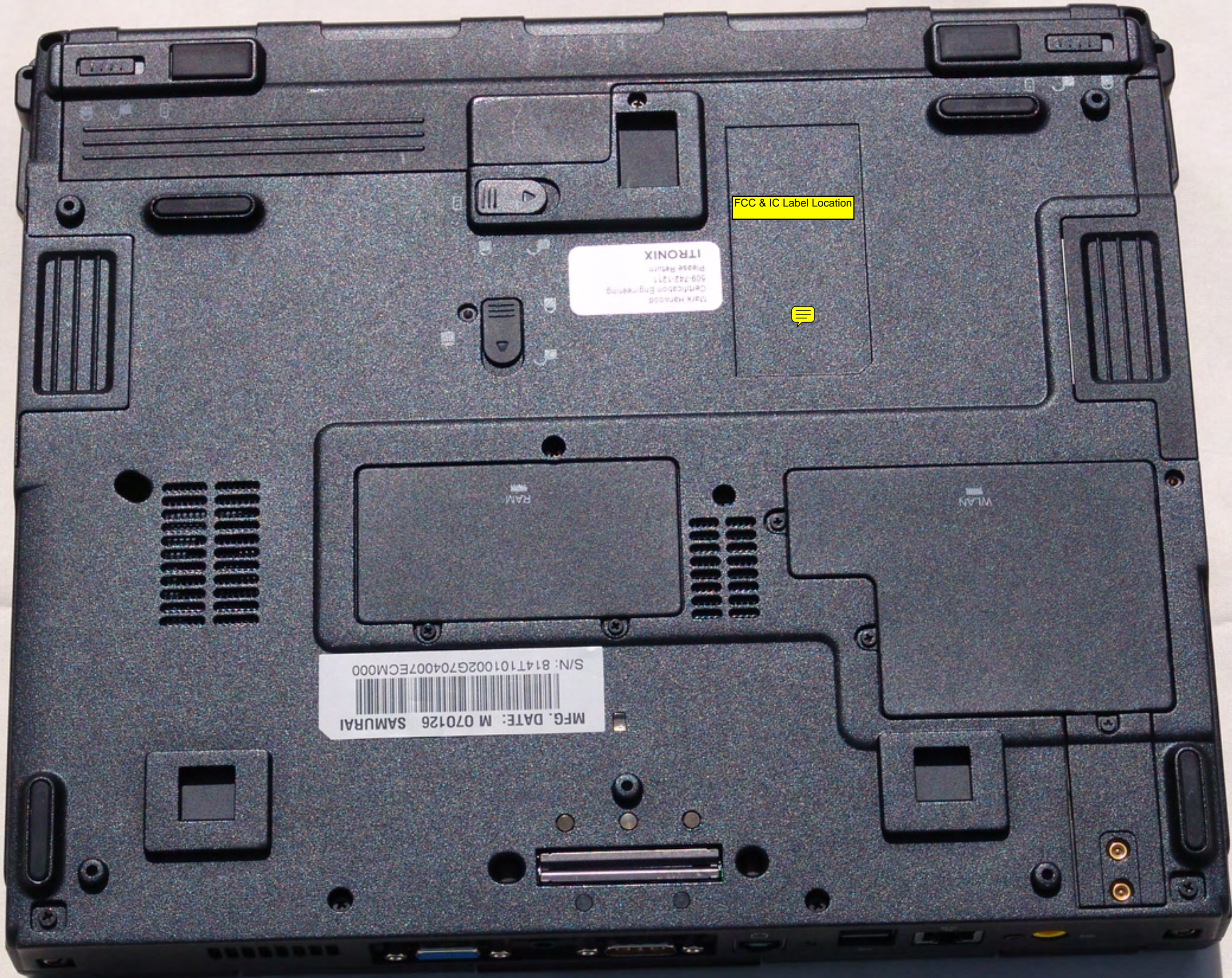
NOTICE OF PROPRIETARY INFORMATION INFORMATION CONTAINED HEREIN IS PROPRIETARY AND IS PROPERTY OF GENERAL DYNAMICS ITRONIX WHERE FURNISHED WITH A PROPOSAL. THE RECIPIENT SHALL USE IT SOLELY TO EVALUATE THE PROPOSAL. WHERE FURNISHED TO A CUSTOMER IT SHALL BE USED SOLELY FOR PURPOSES OF INSPECTION INSTALLATION, OR MAINTENANCE. WHERE FURNISHED TO A SUPPLIER, IT SHALL BE USED SOLELY IN THE PERFORMANCE OF THE WORK CONTRACTED FOR BY THIS COMPANY. THE INFORMATION SHALL NOT BE USED OR DISCLOSED BY THE RECIPIENT FOR ANY OTHER PURPOSE WHATSOEVER.

.TOL. EXCEPT AS NOTED
 X ± 0.5 MM
 X.X ± 0.25 MM
 X.XX ± 0.125 MM
 ANG. = 1.0°

THIRD ANGLE PROJECTION

ITRONIX
 12825 E MIRABEAU PARKWAY
 SPOKANE VALLEY, WA 99216-1464

ZONE	REV.	ECO	BY	DESCRIPTION OF CHANGE	APP.	DATE
-	I	TT	KM	PROTOTYPE RELEASE		
DRAFTER	K. MORDEN	DATE	7-26-07	DESCRIPTION		
CHECKER	J. DERTING	DATE	7-26-07	LBL, IX270, FCC APPD US		
ELEC. ENG		DATE		SIZE	DWG. NO	
MECH. ENG		DATE		B	26-1043-001R	
MFG. ENG		DATE		SCALE	SHEET	REV
				2.000	1 OF 1	1

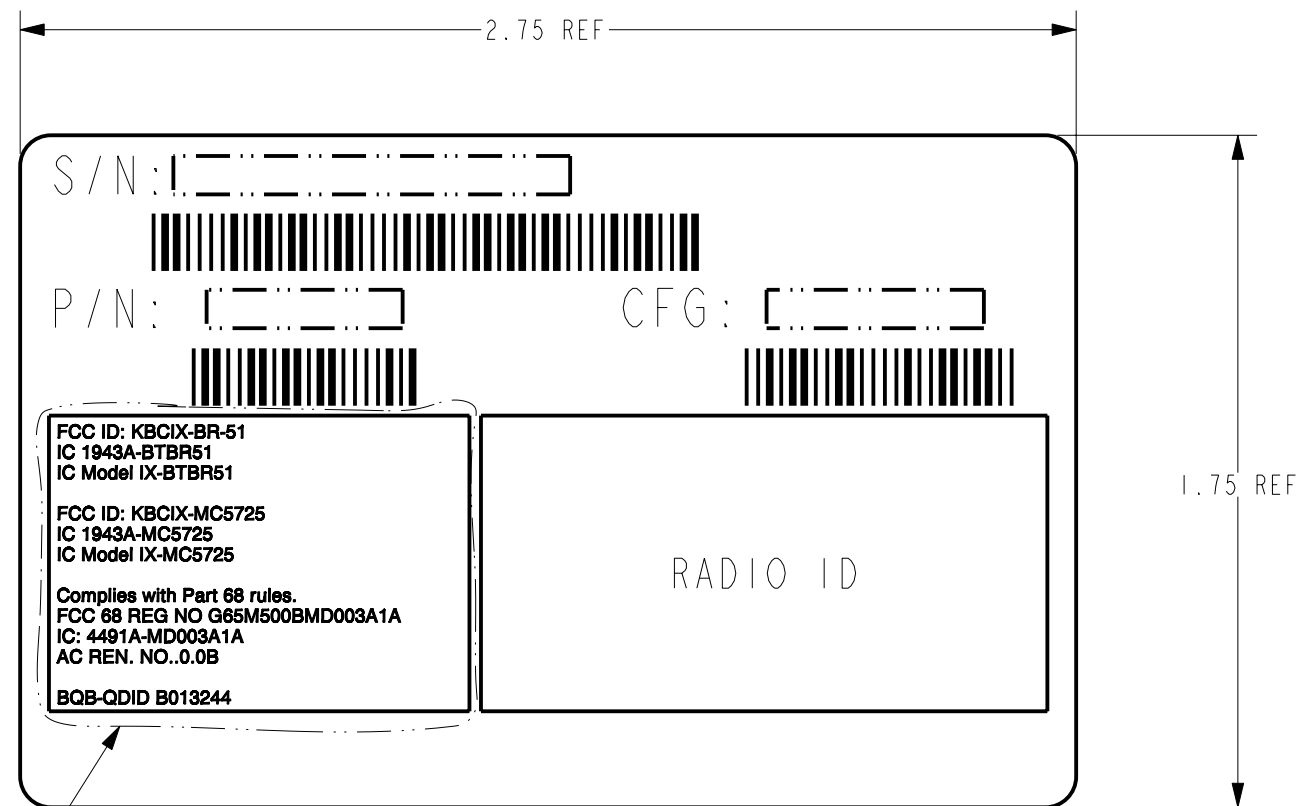


FCC & IC Label Location

Mark Harwood
Centricom Engineering
509-742-1211
Please Return
ITRONIX

MFG. DATE: M 070126 SAMURAI
S/N: 814T101002G704007ECM000

MODEL	PART NUMBER	OBJECT NAME	REV	VER	REL
	26-1003-004R	LBL-BT-5725-1X605-004	***	***	***
DRAWING	26-1003-004R	26-1003-004R.1.X605-BT-5725	-	-	-



NOTES: (UNLESS OTHERWISE SPECIFIED).

- FOR LABEL MANUFACTURE SEE ITRONIX DRAWING 26-0637-000R.
- THIS PART/ASSEMBLY SHALL MEET ROHS COMPLIANCE REQUIREMENTS AS SPECIFIED IN: DIRECTIVE 2002/95/EC OF THE EUROPEAN PARLIAMENT AND OF THE COUNCIL OF 27 JANUARY 2003 ON THE RESTRICTION OF THE USE OF CERTAIN HAZARDOUS SUBSTANCES IN ELECTRICAL AND ELECTRONIC EQUIPMENT.
- PART(S) SHIPPED TO GD-ITRONIX SHALL BE PACKAGED FOR SHIPMENT AND/OR STORAGE IN A CLEAN PROTECTIVE CONTAINER AND BAGGED PROPERLY PER CURRENT GD-ITRONIX PACKAGING AND SHIPPING SPECIFICATION.

SEE DETAIL A

FCC ID: KBCIX-BR-51
IC 1943A-BTBR51
IC Model IX-BTBR51

FCC ID: KBCIX-MC5725
IC 1943A-MC5725
IC Model IX-MC5725

Complies with Part 68 rules.
FCC 68 REG NO G65M500BMD003A1A
IC: 4491A-MD003A1A
AC REN. NO..0.0B

BQB-QDID B013244

DETAIL A
SCALE 4.000

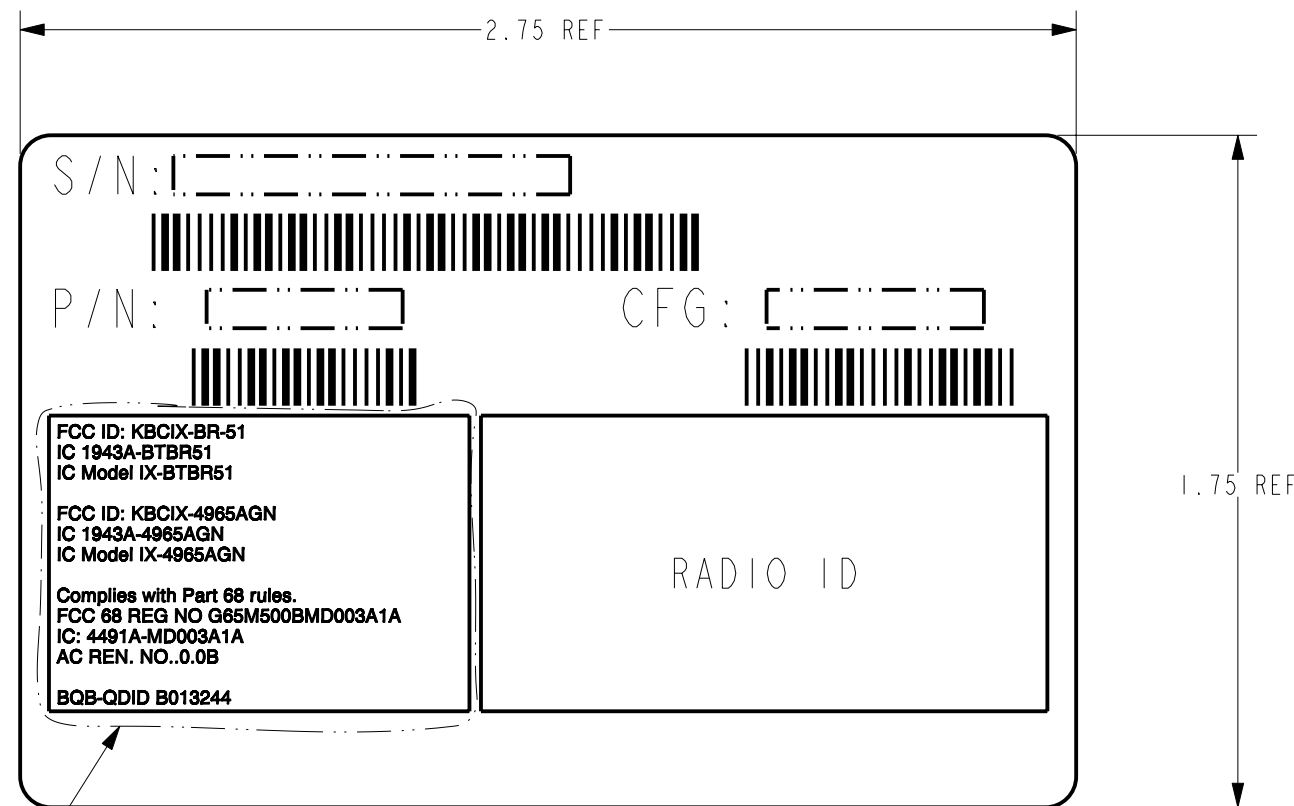
RADIO CONFIGURATION	
BLUETOOTH PAN	
MC5725 WAN	
UNLESS OTHERWISE SPECIFIED, DIMENSIONS IN INCHES DO NOT SCALE DRAWING	
NOTICE OF PROPRIETARY INFORMATION INFORMATION CONTAINED HEREIN IS PROPRIETARY AND IS PROPERTY OF GENERAL DYNAMICS ITRONIX WHERE FURNISHED WITH A PROPOSAL. THE RECIPIENT SHALL USE IT SOLELY TO EVALUATE THE PROPOSAL. WHERE FURNISHED TO A CUSTOMER IT SHALL BE USED SOLELY FOR PURPOSES OF INSPECTION INSTALLATION, OR MAINTENANCE. WHERE FURNISHED TO A SUPPLIER, IT SHALL BE USED SOLELY IN THE PERFORMANCE OF THE WORK CONTRACTED FOR BY THIS COMPANY. THE INFORMATION SHALL NOT BE USED OR DISCLOSED BY THE RECIPIENT FOR ANY OTHER PURPOSE WHATSOEVER.	
.TOL. EXCEPT AS NOTED .XX ± 0.01 INCH .XXX ± 0.005 INCH ANG. = 1.0°	
THIRD ANGLE PROJECTION	
GENERAL DYNAMICS Itronix 12825 E MIRABEAU PARKWAY SPOKANE VALLEY, WA 99216-1464	

ZONE	REV.	ECO	BY	DESCRIPTION OF CHANGE	APP.	DATE
-	I	MH	KM	PROTOTYPE RELEASE		
DRAFTER K. MORDEN				DATE 1-8-08		
CHECKER				DATE		
QA/IOC				DATE		
ENGINEER				DATE		
MFG. ENG				DATE		
SIZE B		DWG. NO 26-1003-004R		SCALE 2.000		
SHEET 1 OF 1		REV 1				

MODEL	PART NUMBER	OBJECT NAME	REV	VER	REL
	26-1009-005R	LBL-BT-WLAN-1X605-005	***	***	***
DRAWING	26-1009-005R	26-1009-005R.1.1X605-BT-WLN	-		

NOTES: (UNLESS OTHERWISE SPECIFIED).

- FOR LABEL MANUFACTURE SEE ITRONIX DRAWING 26-0637-000R.
- THIS PART/ASSEMBLY SHALL MEET ROHS COMPLIANCE REQUIREMENTS AS SPECIFIED IN: DIRECTIVE 2002/95/EC OF THE EUROPEAN PARLIAMENT AND OF THE COUNCIL OF 27 JANUARY 2003 ON THE RESTRICTION OF THE USE OF CERTAIN HAZARDOUS SUBSTANCES IN ELECTRICAL AND ELECTRONIC EQUIPMENT.
- PART(S) SHIPPED TO GD-ITRONIX SHALL BE PACKAGED FOR SHIPMENT AND/OR STORAGE IN A CLEAN PROTECTIVE CONTAINER AND BAGGED PROPERLY PER CURRENT GD-ITRONIX PACKAGING AND SHIPPING SPECIFICATION.



SEE DETAIL A

FCC ID: KBCIX-BR-51
IC 1943A-BTBR51
IC Model IX-BTBR51

FCC ID: KBCIX-4965AGN
IC 1943A-4965AGN
IC Model IX-4965AGN

Complies with Part 68 rules.
FCC 68 REG NO G65M500BMD003A1A
IC: 4491A-MD003A1A
AC REN. NO..0.0B

BQB-QDID B013244

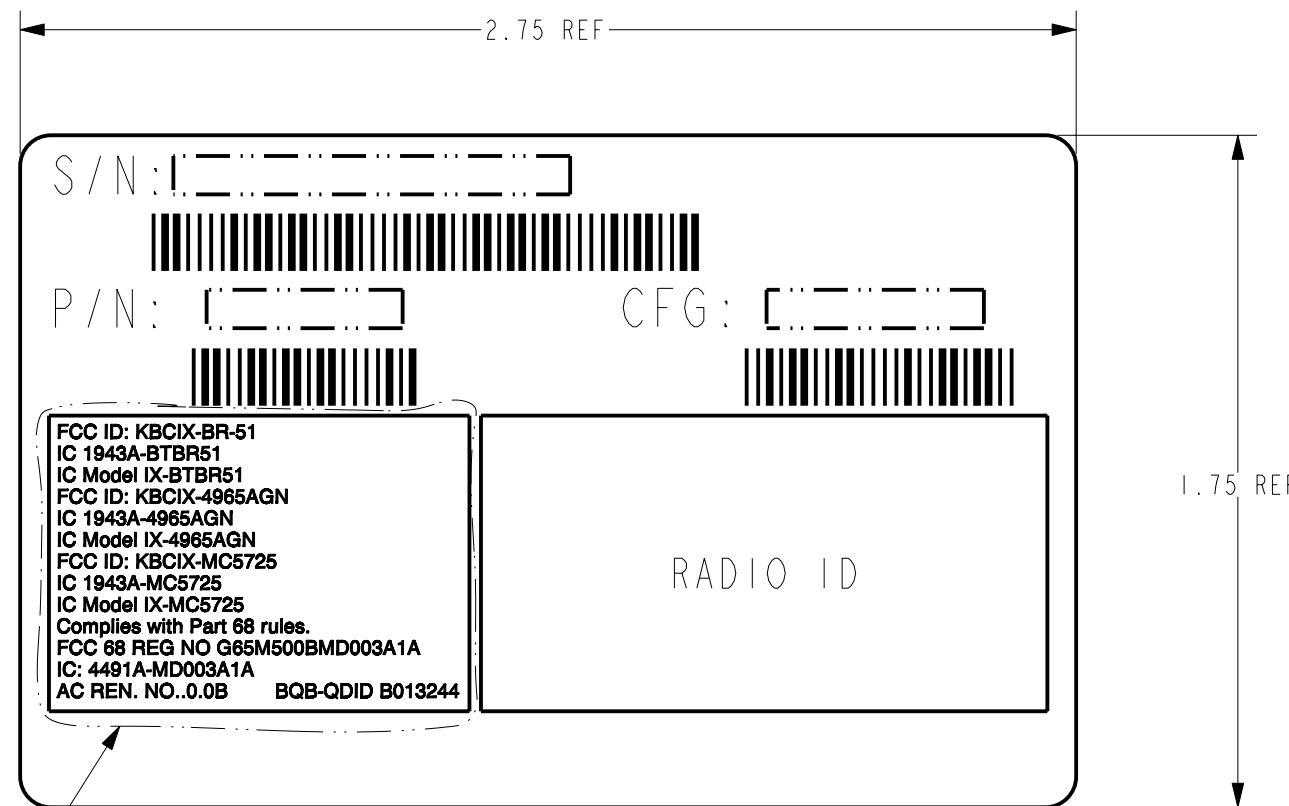
DETAIL A
SCALE 4.000

RADIO CONFIGURATION																																															
BLUETOOTH PAN																																															
INTEL WLAN 4965AGN																																															
UNLESS OTHERWISE SPECIFIED, DIMENSIONS IN INCHES DO NOT SCALE DRAWING		.TOL. EXCEPT AS NOTED .XX ± 0.01 INCH .XXX ± 0.005 INCH ANG. = 1.0°		<table border="1"> <tr> <td>-</td> <td>I</td> <td>MH</td> <td>KM</td> <td colspan="2">PROTOTYPE RELEASE</td> </tr> <tr> <td>ZONE</td> <td>REV.</td> <td>ECO</td> <td>BY</td> <td colspan="2">DESCRIPTION OF CHANGE</td> </tr> <tr> <td colspan="4">DRAFTER K. MORDEN</td> <td colspan="2">DATE 1-8-08</td> </tr> <tr> <td colspan="4">CHECKER</td> <td colspan="2">DATE</td> </tr> <tr> <td colspan="4">THIRD ANGLE PROJECTION</td> <td colspan="2">DATE</td> </tr> <tr> <td colspan="4">ENGINEER</td> <td colspan="2">DATE</td> </tr> <tr> <td colspan="4">MFG. ENG</td> <td colspan="2">DATE</td> </tr> </table>		-	I	MH	KM	PROTOTYPE RELEASE		ZONE	REV.	ECO	BY	DESCRIPTION OF CHANGE		DRAFTER K. MORDEN				DATE 1-8-08		CHECKER				DATE		THIRD ANGLE PROJECTION				DATE		ENGINEER				DATE		MFG. ENG				DATE	
-	I	MH	KM	PROTOTYPE RELEASE																																											
ZONE	REV.	ECO	BY	DESCRIPTION OF CHANGE																																											
DRAFTER K. MORDEN				DATE 1-8-08																																											
CHECKER				DATE																																											
THIRD ANGLE PROJECTION				DATE																																											
ENGINEER				DATE																																											
MFG. ENG				DATE																																											
<p>NOTICE OF PROPRIETARY INFORMATION INFORMATION CONTAINED HEREIN IS PROPRIETARY AND IS PROPERTY OF GENERAL DYNAMICS ITRONIX WHERE FURNISHED WITH A PROPOSAL. THE RECIPIENT SHALL USE IT SOLELY TO EVALUATE THE PROPOSAL. WHERE FURNISHED TO A CUSTOMER IT SHALL BE USED SOLELY FOR PURPOSES OF INSPECTION INSTALLATION, OR MAINTENANCE. WHERE FURNISHED TO A SUPPLIER, IT SHALL BE USED SOLELY IN THE PERFORMANCE OF THE WORK CONTRACTED FOR BY THIS COMPANY. THE INFORMATION SHALL NOT BE USED OR DISCLOSED BY THE RECIPIENT FOR ANY OTHER PURPOSE WHATSOEVER.</p>																																															
DESCRIPTION		<table border="1"> <tr> <td>SIZE</td> <td colspan="2">DWG. NO</td> <td colspan="2">REV</td> </tr> <tr> <td>B</td> <td colspan="2">26-1009-005R</td> <td colspan="2">1 OF 1</td> </tr> <tr> <td>SCALE</td> <td colspan="2">SHEET</td> <td colspan="2">REV</td> </tr> <tr> <td>2.000</td> <td colspan="2">1 OF 1</td> <td colspan="2">1</td> </tr> </table>				SIZE	DWG. NO		REV		B	26-1009-005R		1 OF 1		SCALE	SHEET		REV		2.000	1 OF 1		1																							
SIZE	DWG. NO		REV																																												
B	26-1009-005R		1 OF 1																																												
SCALE	SHEET		REV																																												
2.000	1 OF 1		1																																												

MODEL	PART NUMBER	OBJECT NAME	REV	VER	REL
	26-1005-005R	LBL-BT-WLAN-5725-1X605-005	***	***	***
DRAWING	26-1005-005R	26-1005-005R.1.605-BT-WLN-5725	-	-	-

NOTES: (UNLESS OTHERWISE SPECIFIED).

- FOR LABEL MANUFACTURE SEE ITRONIX DRAWING 26-0637-000R.
- THIS PART/ASSEMBLY SHALL MEET ROHS COMPLIANCE REQUIREMENTS AS SPECIFIED IN: DIRECTIVE 2002/95/EC OF THE EUROPEAN PARLIAMENT AND OF THE COUNCIL OF 27 JANUARY 2003 ON THE RESTRICTION OF THE USE OF CERTAIN HAZARDOUS SUBSTANCES IN ELECTRICAL AND ELECTRONIC EQUIPMENT.
- PART(S) SHIPPED TO GD-ITRONIX SHALL BE PACKAGED FOR SHIPMENT AND/OR STORAGE IN A CLEAN PROTECTIVE CONTAINER AND BAGGED PROPERLY PER CURRENT GD-ITRONIX PACKAGING AND SHIPPING SPECIFICATION.



SEE DETAIL A

FCC ID: KBCIX-BR-51
IC 1943A-BTBR51
IC Model IX-BTBR51
FCC ID: KBCIX-4965AGN
IC 1943A-4965AGN
IC Model IX-4965AGN
FCC ID: KBCIX-MC5725
IC 1943A-MC5725
IC Model IX-MC5725
Complies with Part 68 rules.
FCC 68 REG NO G65M500BMD003A1A
IC: 4491A-MD003A1A
AC REN. NO..0.0B BQB-QDID B013244

DETAIL A
SCALE 4.000

RADIO CONFIGURATION		- I MH KM				PROTOTYPE RELEASE									
BLUETOOTH PAN		ZONE		REV.		ECO		BY		DESCRIPTION OF CHANGE		APP.		DATE	
INTEL WLAN 4965AGN		MC5725 WAN		K. MORDEN		1-8-08		DATE		DESCRIPTION		SIZE		DWG. NO	
UNLESS OTHERWISE SPECIFIED, DIMENSIONS IN INCHES DO NOT SCALE DRAWING		.TOL. EXCEPT AS NOTED .XX ± 0.01 INCH .XXX ± 0.005 INCH ANG. = 1.0°		THIRD ANGLE PROJECTION		GENERAL DYNAMICS Works		12825 E MIRABEAU PARKWAY SPOKANE VALLEY, WA 99216-1464		LBL, 1X605, BT, WLAN, 5725		B		26-1005-005R	
NOTICE OF PROPRIETARY INFORMATION INFORMATION CONTAINED HEREIN IS PROPRIETARY AND IS PROPERTY OF GENERAL DYNAMICS ITRONIX WHERE FURNISHED WITH A PROPOSAL. THE RECIPIENT SHALL USE IT SOLELY TO EVALUATE THE PROPOSAL. WHERE FURNISHED TO A CUSTOMER IT SHALL BE USED SOLELY FOR PURPOSES OF INSPECTION INSTALLATION, OR MAINTENANCE. WHERE FURNISHED TO A SUPPLIER, IT SHALL BE USED SOLELY IN THE PERFORMANCE OF THE WORK CONTRACTED FOR BY THIS COMPANY. THE INFORMATION SHALL NOT BE USED OR DISCLOSED BY THE RECIPIENT FOR ANY OTHER PURPOSE WHATSOEVER.		ENGINEER		DATE		MFG. ENG		DATE		SCALE		SHEET		REV	
										2.000		1 OF 1		1	