



Accredited by the Swiss Accreditation Service (SAS)

Accreditation No.: **SCS 108**

The Swiss Accreditation Service is one of the signatories to the EA  
Multilateral Agreement for the recognition of calibration certificates

Client

**ALUMI**

Certificate No. **D5GHz-1040\_Jun11**

## CALIBRATION CERTIFICATE

Object **D5GHzV2 - SN: 1040**

Calibration procedure(s) **QA CAL-22.v1  
Calibration procedure for dipole validation kits between 3-6 GHz**

Calibration date: **June 21, 2011**

This calibration certificate documents the traceability to national standards, which realize the physical units of measurements (SI).  
The measurements and the uncertainties with confidence probability are given on the following pages and are part of the certificate.

All calibrations have been conducted in the closed laboratory facility: environment temperature (22 ± 3)°C and humidity < 70%.

Calibration Equipment used (M&TE critical for calibration)

| Primary Standards           | ID #               | Cal Date (Certificate No.)        | Scheduled Calibration  |
|-----------------------------|--------------------|-----------------------------------|------------------------|
| Power meter EPM-442A        | GB37480704         | 06-Oct-10 (No. 217-01266)         | Oct-11                 |
| Power sensor HP 8481A       | US37292783         | 06-Oct-10 (No. 217-01266)         | Oct-11                 |
| Reference 20 dB Attenuator  | SN: 5086 (20g)     | 29-Mar-11 (No. 217-01368)         | Apr-12                 |
| Type-N mismatch combination | SN: 5047.2 / 06327 | 29-Mar-11 (No. 217-01371)         | Apr-12                 |
| Reference Probe EX3DV4      | SN: 3503           | 04-Mar-11 (No. EX3-3503_Mar11)    | Mar-12                 |
| DAE4                        | SN: 601            | 8-Jun-11 (No. DAE4-601_Jun11)     | Jun-12                 |
| Secondary Standards         | ID #               | Check Date (in house)             | Scheduled Check        |
| Power sensor HP 8481A       | MY41092317         | 18-Oct-02 (in house check Oct-09) | In house check: Oct-11 |
| RF generator R&S SMT-06     | 100005             | 4-Aug-99 (in house check Oct-09)  | In house check: Oct-11 |
| Network Analyzer HP 8753E   | US37390585 S4206   | 18-Oct-01 (in house check Oct-10) | In house check: Oct-11 |

Calibrated by: **Dimitre Iliev** (Name) **Laboratory Technician** (Function) *[Signature]* (Signature)

Approved by: **Kata Pokovic** (Name) **Technical Manager** (Function) *[Signature]* (Signature)

Issued: June 21, 2011

This calibration certificate shall not be reproduced except in full without written approval of the laboratory.



Accredited by the Swiss Accreditation Service (SAS)

Accreditation No.: **SCS 108**

The Swiss Accreditation Service is one of the signatories to the EA  
Multilateral Agreement for the recognition of calibration certificates

### Glossary:

|       |                                 |
|-------|---------------------------------|
| TSL   | tissue simulating liquid        |
| ConvF | sensitivity in TSL / NORM x,y,z |
| N/A   | not applicable or not measured  |

### Calibration is Performed According to the Following Standards:

- IEEE Std 1528-2003, "IEEE Recommended Practice for Determining the Peak Spatial-Averaged Specific Absorption Rate (SAR) in the Human Head from Wireless Communications Devices: Measurement Techniques", December 2003
- IEC 62209-1, "Procedure to measure the Specific Absorption Rate (SAR) for hand-held devices used in close proximity to the ear (frequency range of 300 MHz to 3 GHz)", February 2005
- Federal Communications Commission Office of Engineering & Technology (FCC OET), "Evaluating Compliance with FCC Guidelines for Human Exposure to Radiofrequency Electromagnetic Fields; Additional Information for Evaluating Compliance of Mobile and Portable Devices with FCC Limits for Human Exposure to Radiofrequency Emissions", Supplement C (Edition 01-01) to Bulletin 65

### Additional Documentation:

- DASY4/5 System Handbook

### Methods Applied and Interpretation of Parameters:

- Measurement Conditions:** Further details are available from the Validation Report at the end of the certificate. All figures stated in the certificate are valid at the frequency indicated.
- Antenna Parameters with TSL:** The dipole is mounted with the spacer to position its feed point exactly below the center marking of the flat phantom section, with the arms oriented parallel to the body axis.
- Feed Point Impedance and Return Loss:** These parameters are measured with the dipole positioned under the liquid filled phantom. The impedance stated is transformed from the measurement at the SMA connector to the feed point. The Return Loss ensures low reflected power. No uncertainty required.
- Electrical Delay:** One-way delay between the SMA connector and the antenna feed point. No uncertainty required.
- SAR measured:** SAR measured at the stated antenna input power.
- SAR normalized:** SAR as measured, normalized to an input power of 1 W at the antenna connector.
- SAR for nominal TSL parameters:** The measured TSL parameters are used to calculate the nominal SAR result.

## Measurement Conditions

DASY system configuration, as far as not given on page 1.

|                                     |  |             |
|-------------------------------------|--|-------------|
| <b>DASY Version</b>                 | DASY5  | V52.6.2     |
| <b>Extrapolation</b>                | Advanced Extrapolation                                   |             |
| <b>Phantom</b>                      | Modular Flat Phantom V5.0                                |             |
| <b>Distance Dipole Center - TSL</b> | 10 mm  | with Spacer |
| <b>Zoom Scan Resolution</b>         | dx, dy = 4.0 mm, dz = 1.4 mm                             |             |
| <b>Frequency</b>                    | 5200 MHz ± 1 MHz<br>5500 MHz ± 1 MHz<br>5800 MHz ± 1 MHz |             |

## Head TSL parameters at 5200 MHz

The following parameters and calculations were applied.

|  | Temperature     | Permittivity | Conductivity     |
|--|-----------------|--------------|------------------|
| <b>Nominal Head TSL parameters</b>             | 22.0 °C         | 36.0         | 4.66 mho/m       |
| <b>Measured Head TSL parameters</b>            | (22.0 ± 0.2) °C | 35.8 ± 6 %   | 4.50 mho/m ± 6 % |
| <b>Head TSL temperature change during test</b> | < 0.5 °C        | ----         | ----             |

## SAR result with Head TSL at 5200 MHz

| <b>SAR averaged over 1 cm<sup>3</sup> (1 g) of Head TSL</b> | Condition          |                                   |
|---|--------------------|-----------------------------------|
| SAR measured  | 100 mW input power | 8.13 mW / g                       |
| SAR for nominal Head TSL parameters                         | normalized to 1W   | <b>81.2 mW / g ± 17.0 % (k=2)</b> |

| <b>SAR averaged over 10 cm<sup>3</sup> (10 g) of Head TSL</b> | condition          |                                   |
|---|--------------------|-----------------------------------|
| SAR measured  | 100 mW input power | 2.32 mW / g                       |
| SAR for nominal Head TSL parameters                           | normalized to 1W   | <b>23.1 mW / g ± 16.5 % (k=2)</b> |

## Head TSL parameters at 5500 MHz

The following parameters and calculations were applied.

|  | Temperature     | Permittivity | Conductivity     |
|--|-----------------|--------------|------------------|
| <b>Nominal Head TSL parameters</b>             | 22.0 °C         | 35.6         | 4.96 mho/m       |
| <b>Measured Head TSL parameters</b>            | (22.0 ± 0.2) °C | 35.2 ± 6 %   | 4.82 mho/m ± 6 % |
| <b>Head TSL temperature change during test</b> | < 0.5 °C        | ----         | ----             |

## SAR result with Head TSL at 5500 MHz

| <b>SAR averaged over 1 cm<sup>3</sup> (1 g) of Head TSL</b> | Condition          |                                   |
|---|--------------------|-----------------------------------|
| SAR measured  | 100 mW input power | 8.59 mW / g                       |
| SAR for nominal Head TSL parameters                         | normalized to 1W   | <b>85.6 mW / g ± 17.0 % (k=2)</b> |

| <b>SAR averaged over 10 cm<sup>3</sup> (10 g) of Head TSL</b> | condition          |                                   |
|---|--------------------|-----------------------------------|
| SAR measured  | 100 mW input power | 2.44 mW / g                       |
| SAR for nominal Head TSL parameters                           | normalized to 1W   | <b>24.3 mW / g ± 16.5 % (k=2)</b> |

### Head TSL parameters at 5800 MHz

The following parameters and calculations were applied.

|  | Temperature     | Permittivity | Conductivity     |
|--|-----------------|--------------|------------------|
| <b>Nominal Head TSL parameters</b>             | 22.0 °C         | 35.3         | 5.27 mho/m       |
| <b>Measured Head TSL parameters</b>            | (22.0 ± 0.2) °C | 34.8 ± 6 %   | 5.08 mho/m ± 6 % |
| <b>Head TSL temperature change during test</b> | < 0.5 °C        | ----         | ----             |

### SAR result with Head TSL at 5800 MHz

| <b>SAR averaged over 1 cm<sup>3</sup> (1 g) of Head TSL</b> | Condition          |                                   |
|---|--------------------|-----------------------------------|
| SAR measured  | 100 mW input power | 7.93 mW / g                       |
| SAR for nominal Head TSL parameters                         | normalized to 1W   | <b>78.9 mW / g ± 17.0 % (k=2)</b> |

| <b>SAR averaged over 10 cm<sup>3</sup> (10 g) of Head TSL</b> | condition          |                                   |
|---|--------------------|-----------------------------------|
| SAR measured  | 100 mW input power | 2.25 mW / g                       |
| SAR for nominal Head TSL parameters                           | normalized to 1W   | <b>22.4 mW / g ± 16.5 % (k=2)</b> |

### Body TSL parameters at 5200 MHz

The following parameters and calculations were applied.

|   | Temperature     | Permittivity | Conductivity     |
|---|-----------------|--------------|------------------|
| Nominal Body TSL parameters             | 22.0 °C         | 49.0         | 5.30 mho/m       |
| Measured Body TSL parameters            | (22.0 ± 0.2) °C | 49.0 ± 6 %   | 5.41 mho/m ± 6 % |
| Body TSL temperature change during test | < 0.5 °C        | ----         | ----             |

### SAR result with Body TSL at 5200 MHz

| SAR averaged over 1 cm <sup>3</sup> (1 g) of Body TSL | Condition          |                                   |
|---|--------------------|-----------------------------------|
| SAR measured  | 100 mW input power | 7.60 mW / g                       |
| SAR for nominal Body TSL parameters                   | normalized to 1W   | <b>76.0 mW / g ± 18.1 % (k=2)</b> |

| SAR averaged over 10 cm <sup>3</sup> (10 g) of Body TSL | condition          |                                   |
|---|--------------------|-----------------------------------|
| SAR measured  | 100 mW input power | 2.13 mW / g                       |
| SAR for nominal Body TSL parameters                     | normalized to 1W   | <b>21.3 mW / g ± 17.6 % (k=2)</b> |

### Body TSL parameters at 5500 MHz

The following parameters and calculations were applied.

|   | Temperature     | Permittivity | Conductivity     |
|---|-----------------|--------------|------------------|
| Nominal Body TSL parameters             | 22.0 °C         | 48.6         | 5.65 mho/m       |
| Measured Body TSL parameters            | (22.0 ± 0.2) °C | 48.3 ± 6 %   | 5.86 mho/m ± 6 % |
| Body TSL temperature change during test | < 0.5 °C        | ----         | ----             |

### SAR result with Body TSL at 5500 MHz

| SAR averaged over 1 cm <sup>3</sup> (1 g) of Body TSL | Condition          |                                   |
|---|--------------------|-----------------------------------|
| SAR measured  | 100 mW input power | 8.18 mW / g                       |
| SAR for nominal Body TSL parameters                   | normalized to 1W   | <b>81.7 mW / g ± 18.1 % (k=2)</b> |

| SAR averaged over 10 cm <sup>3</sup> (10 g) of Body TSL | condition          |                                   |
|---|--------------------|-----------------------------------|
| SAR measured  | 100 mW input power | 2.27 mW / g                       |
| SAR for nominal Body TSL parameters                     | normalized to 1W   | <b>22.7 mW / g ± 17.6 % (k=2)</b> |

### Body TSL parameters at 5800 MHz

The following parameters and calculations were applied.

|  | Temperature     | Permittivity | Conductivity     |
|--|-----------------|--------------|------------------|
| <b>Nominal Body TSL parameters</b>             | 22.0 °C         | 48.2         | 6.00 mho/m       |
| <b>Measured Body TSL parameters</b>            | (22.0 ± 0.2) °C | 47.8 ± 6 %   | 6.21 mho/m ± 6 % |
| <b>Body TSL temperature change during test</b> | < 0.5 °C        | ----         | ----             |

### SAR result with Body TSL at 5800 MHz

| <b>SAR averaged over 1 cm<sup>3</sup> (1 g) of Body TSL</b> | Condition          |                                   |
|---|--------------------|-----------------------------------|
| SAR measured  | 100 mW input power | 7.55 mW / g                       |
| SAR for nominal Body TSL parameters                         | normalized to 1W   | <b>75.4 mW / g ± 18.1 % (k=2)</b> |

| <b>SAR averaged over 10 cm<sup>3</sup> (10 g) of Body TSL</b> | condition          |                                   |
|---|--------------------|-----------------------------------|
| SAR measured  | 100 mW input power | 2.10 mW / g                       |
| SAR for nominal Body TSL parameters                           | normalized to 1W   | <b>21.0 mW / g ± 17.6 % (k=2)</b> |

## Appendix

### Antenna Parameters with Head TSL at 5200 MHz

|                                      |                                |
|--------------------------------------|--------------------------------|
| Impedance, transformed to feed point | 49.8 $\Omega$ - 6.9 j $\Omega$ |
| Return Loss                          | - 23.2 dB                      |

### Antenna Parameters with Head TSL at 5500 MHz

|                                      |                                |
|--------------------------------------|--------------------------------|
| Impedance, transformed to feed point | 51.9 $\Omega$ - 4.3 j $\Omega$ |
| Return Loss                          | - 26.8 dB                      |

### Antenna Parameters with Head TSL at 5800 MHz

|                                      |                                |
|--------------------------------------|--------------------------------|
| Impedance, transformed to feed point | 54.6 $\Omega$ - 1.6 j $\Omega$ |
| Return Loss                          | - 26.6 dB                      |

### Antenna Parameters with Body TSL at 5200 MHz

|                                      |                                |
|--------------------------------------|--------------------------------|
| Impedance, transformed to feed point | 50.0 $\Omega$ - 5.6 j $\Omega$ |
| Return Loss                          | - 25.0 dB                      |

### Antenna Parameters with Body TSL at 5500 MHz

|                                      |                                |
|--------------------------------------|--------------------------------|
| Impedance, transformed to feed point | 52.1 $\Omega$ - 2.5 j $\Omega$ |
| Return Loss                          | - 30.1 dB                      |

### Antenna Parameters with Body TSL at 5800 MHz

|                                      |                                |
|--------------------------------------|--------------------------------|
| Impedance, transformed to feed point | 56.0 $\Omega$ + 0.5 j $\Omega$ |
| Return Loss                          | - 24.9 dB                      |

## General Antenna Parameters and Design

|                                  |          |
|----------------------------------|----------|
| Electrical Delay (one direction) | 1.203 ns |
|----------------------------------|----------|

After long term use with 100W radiated power, only a slight warming of the dipole near the feedpoint can be measured.

The dipole is made of standard semirigid coaxial cable. The center conductor of the feeding line is directly connected to the second arm of the dipole. The antenna is therefore short-circuited for DC-signals.

No excessive force must be applied to the dipole arms, because they might bend or the soldered connections near the feedpoint may be damaged.

## Additional EUT Data

|                 |                   |
|-----------------|-------------------|
| Manufactured by | SPEAG             |
| Manufactured on | December 30, 2005 |

## DASY5 Validation Report for Head TSL

Date: 20.06.2011

Test Laboratory: SPEAG, Zurich, Switzerland

**DUT: Dipole 5GHz; Type: D5GHz; Serial: D5GHzV2 - SN: 1040**

Communication System: CW; Frequency: 5200 MHz, Frequency: 5500 MHz, Frequency: 5800 MHz  
Medium: HSL 502 A

Medium parameters used:  $f = 5200$  MHz;  $\sigma = 4.5$  mho/m;  $\epsilon_r = 35.8$ ;  $\rho = 1000$  kg/m<sup>3</sup>, Medium parameters used:  $f = 5500$  MHz;  $\sigma = 4.82$  mho/m;  $\epsilon_r = 35.2$ ;  $\rho = 1000$  kg/m<sup>3</sup>, Medium parameters used:  $f = 5800$  MHz;  $\sigma = 5.08$  mho/m;  $\epsilon_r = 34.8$ ;  $\rho = 1000$  kg/m<sup>3</sup>

Phantom section: Flat Section

Measurement Standard: DASY5 (IEEE/IEC/ANSI C63.19-2007)

DASY52 Configuration:

- Probe: EX3DV4 - SN3503; ConvF(5.41, 5.41, 5.41), ConvF(4.91, 4.91, 4.91), ConvF(4.81, 4.81, 4.81); Calibrated: 04.03.2011
- Sensor-Surface: 1.4mm (Mechanical Surface Detection)
- Electronics: DAE4 Sn601; Calibrated: 08.06.2011
- Phantom: Flat Phantom 5.0 (front); Type: QD000P50AA; Serial: 1001
- DASY52 52.6.2(482); SEMCAD X 14.4.5(3634)

**Dipole Calibration for Head Tissue/Pin=100mW, dist=10mm, f=5200 MHz/Zoom Scan, dist=1.4mm (8x8x7)/Cube 0:** Measurement grid: dx=4mm, dy=4mm, dz=1.4mm

Reference Value = 65.544 V/m; Power Drift = 0.07 dB

Peak SAR (extrapolated) = 30.178 W/kg

**SAR(1 g) = 8.13 mW/g; SAR(10 g) = 2.32 mW/g**

Maximum value of SAR (measured) = 18.566 mW/g

**Dipole Calibration for Head Tissue/Pin=100mW, dist=10mm, f=5500 MHz/Zoom Scan, dist=1.4mm (8x8x7)/Cube 0:** Measurement grid: dx=4mm, dy=4mm, dz=1.4mm

Reference Value = 65.669 V/m; Power Drift = 0.04 dB

Peak SAR (extrapolated) = 34.025 W/kg

**SAR(1 g) = 8.59 mW/g; SAR(10 g) = 2.44 mW/g**

Maximum value of SAR (measured) = 20.159 mW/g

**Dipole Calibration for Head Tissue/Pin=100mW, dist=10mm, f=5800 MHz/Zoom Scan, dist=1.4mm (8x8x7)/Cube 0:** Measurement grid: dx=4mm, dy=4mm, dz=1.4mm

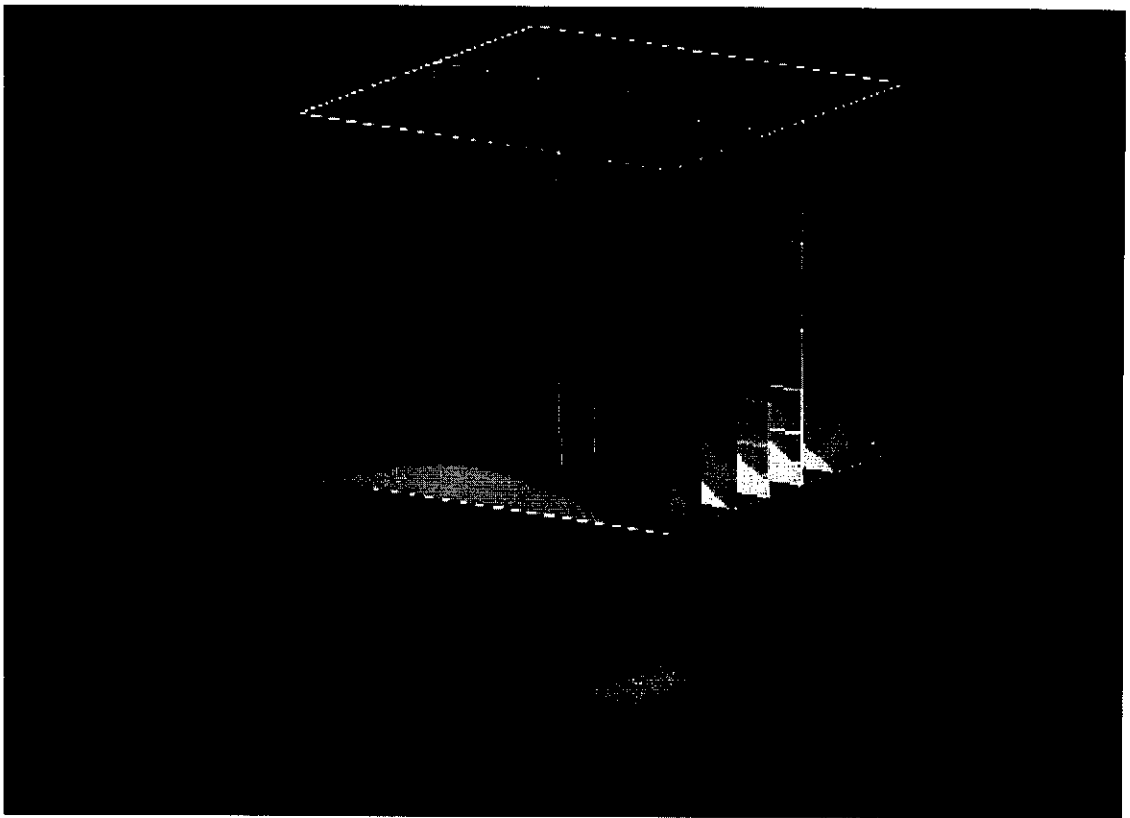
Reference Value = 61.830 V/m; Power Drift = 0.06 dB

Peak SAR (extrapolated) = 32.874 W/kg

**SAR(1 g) = 7.93 mW/g; SAR(10 g) = 2.25 mW/g**

Maximum value of SAR (measured) = 18.884 mW/g





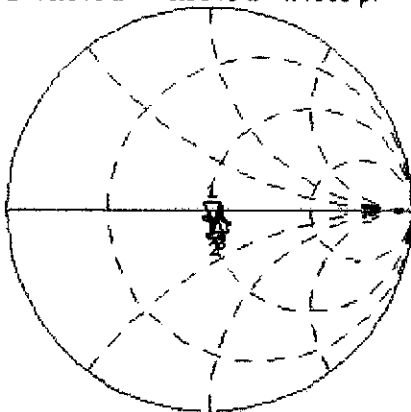
0 dB = 18.880mW/g

# Impedance Measurement Plot for Head TSL

20 Jun 2011 09:11:58

CH1 S11 1 U FS 1: 49.848  $\Omega$  -6.8945  $\Omega$  4.4393 pF 5 200.000 000 MHz

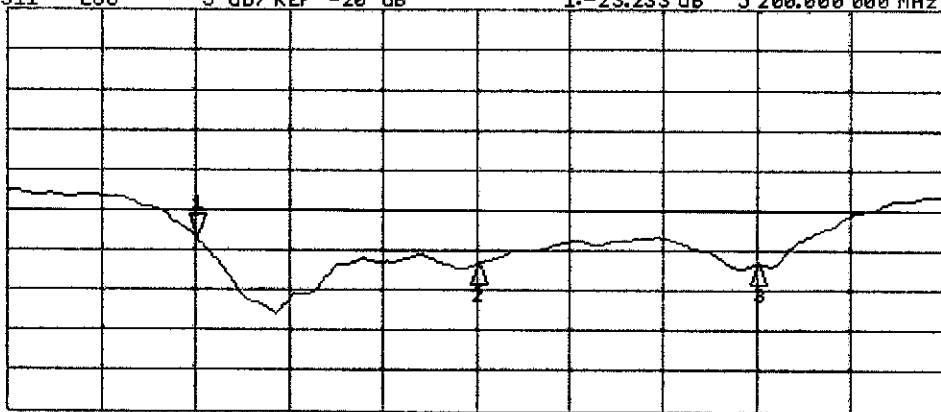
\*  
De1  
Cor  
Avg  
16  
H1d



CH1 Markers  
2: 51.904  $\Omega$   
-4.2578  $\Omega$   
5.50000 GHz  
3: 54.615  $\Omega$   
-1.5500  $\Omega$   
5.80000 GHz

CH2 S11 LOG 5 dB/REF -20 dB 1: -23.233 dB 5 200.000 000 MHz

Cor  
Avg  
16  
H1d



CH2 Markers  
2: -26.793 dB  
5.50000 GHz  
3: -26.641 dB  
5.80000 GHz

## DASY5 Validation Report for Body TSL

Date: 21.06.2011

Test Laboratory: SPEAG, Zurich, Switzerland

**DUT: Dipole 5GHz; Type: D5GHz; Serial: D5GHzV2 - SN: 1040**

Communication System: CW; Frequency: 5200 MHz, Frequency: 5500 MHz, Frequency: 5800 MHz  
Medium: MSL 501

Medium parameters used:  $f = 5200$  MHz;  $\sigma = 5.41$  mho/m;  $\epsilon_r = 49$ ;  $\rho = 1000$  kg/m<sup>3</sup>, Medium parameters used:  $f = 5500$  MHz;  $\sigma = 5.86$  mho/m;  $\epsilon_r = 48.3$ ;  $\rho = 1000$  kg/m<sup>3</sup>, Medium parameters used:  $f = 5800$  MHz;  $\sigma = 6.21$  mho/m;  $\epsilon_r = 47.8$ ;  $\rho = 1000$  kg/m<sup>3</sup>

Phantom section: Flat Section

Measurement Standard: DASY5 (IEEE/IEC/ANSI C63.19-2007)

DASY52 Configuration:

- Probe: EX3DV4 - SN3503; ConvF(4.91, 4.91, 4.91), ConvF(4.43, 4.43, 4.43), ConvF(4.38, 4.38, 4.38); Calibrated: 04.03.2011
- Sensor-Surface: 1.4mm (Mechanical Surface Detection)
- Electronics: DAE4 Sn601; Calibrated: 08.06.2011
- Phantom: Flat Phantom 5.0 (back); Type: QD000P50AA; Serial: 1002
- DASY52 52.6.2(482); SEMCAD X 14.4.5(3634)

**Dipole Calibration for Body Tissue/Pin=100mW, dist=10mm, f=5200 MHz/Zoom Scan, dist=1.4mm (8x8x7)/Cube 0:** Measurement grid: dx=4mm, dy=4mm, dz=1.4mm

Reference Value = 58.999 V/m; Power Drift = -0.04 dB

Peak SAR (extrapolated) = 29.005 W/kg

**SAR(1 g) = 7.6 mW/g; SAR(10 g) = 2.13 mW/g**

Maximum value of SAR (measured) = 17.369 mW/g

**Dipole Calibration for Body Tissue/Pin=100mW, dist=10mm, f=5500 MHz/Zoom Scan, dist=1.4mm (8x8x7)/Cube 0:** Measurement grid: dx=4mm, dy=4mm, dz=1.4mm

Reference Value = 59.120 V/m; Power Drift = -0.04 dB

Peak SAR (extrapolated) = 33.982 W/kg

**SAR(1 g) = 8.18 mW/g; SAR(10 g) = 2.27 mW/g**

Maximum value of SAR (measured) = 19.380 mW/g

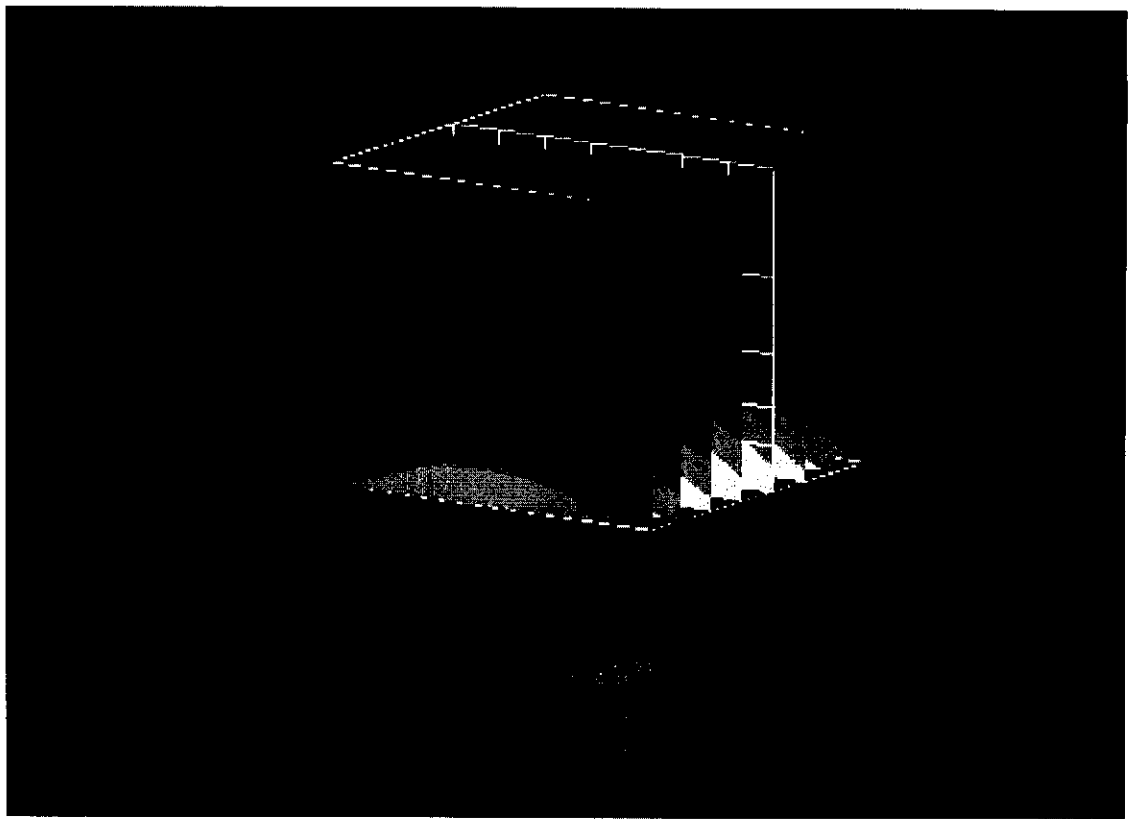
**Dipole Calibration for Body Tissue/Pin=100mW, dist=10mm, f=5800 MHz/Zoom Scan, dist=1.4mm (8x8x7)/Cube 0:** Measurement grid: dx=4mm, dy=4mm, dz=1.4mm

Reference Value = 55.208 V/m; Power Drift = -0.05 dB

Peak SAR (extrapolated) = 33.965 W/kg

**SAR(1 g) = 7.55 mW/g; SAR(10 g) = 2.1 mW/g**

Maximum value of SAR (measured) = 18.403 mW/g



0 dB = 18.400mW/g

# Impedance Measurement Plot for Body TSL

21 Jun 2011 08:57:17

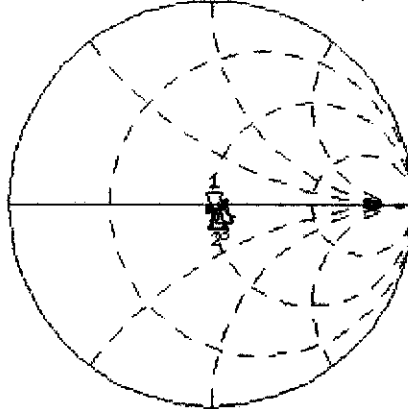
CH1 S11 1 U FS 1: 49.951  $\Omega$  -5.6484  $\Omega$  5.4186 pF 5 200.000 000 MHz

\*  
Del

Cor

Avg  
16

H1d



CH1 Markers

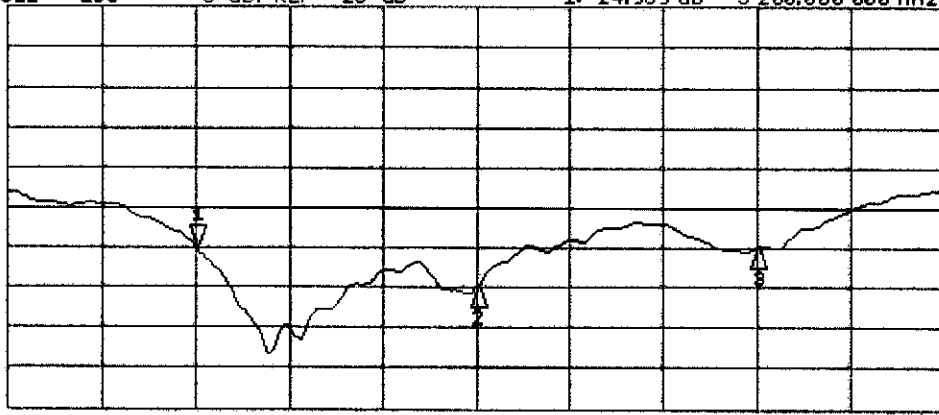
2: 52.052  $\Omega$   
-2.4570  $\Omega$   
5.50000 GHz  
3: 56.018  $\Omega$   
0.5098  $\Omega$   
5.80000 GHz

CH2 S11 LOG 5 dB/REF -20 dB 1:-24.969 dB 5 200.000 000 MHz

Cor

Avg  
16

H1d



CH2 Markers

2:-30.056 dB  
5.50000 GHz  
3:-24.888 dB  
5.80000 GHz

START 5 000.000 000 MHz

STOP 6 000.000 000 MHz