

# Request for Class II Permissive Change

FCC ID:KA2WR330A1

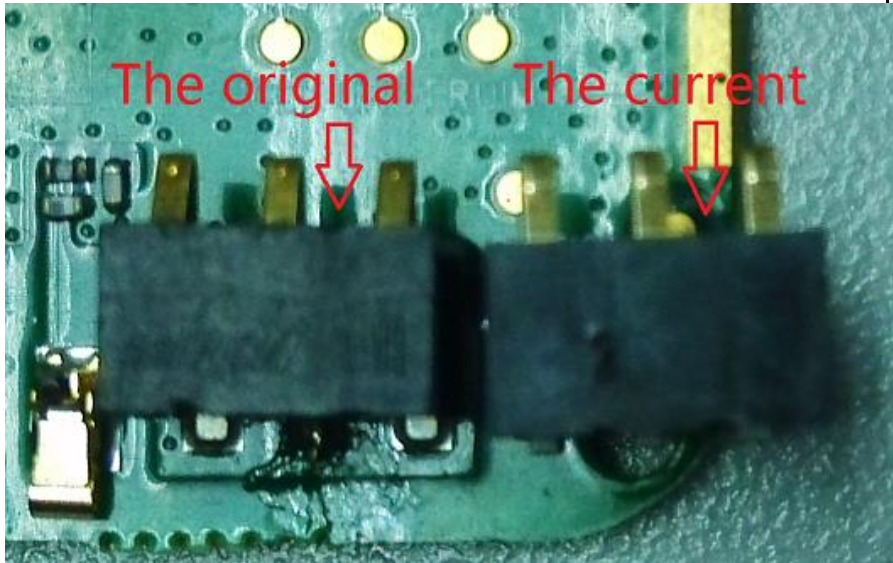
Date:June 11,2014

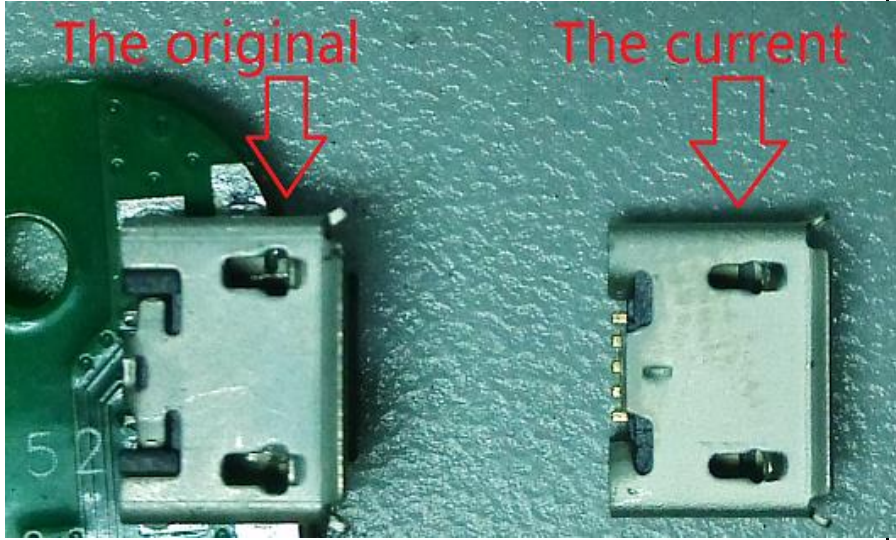


To Federal Communication Commission

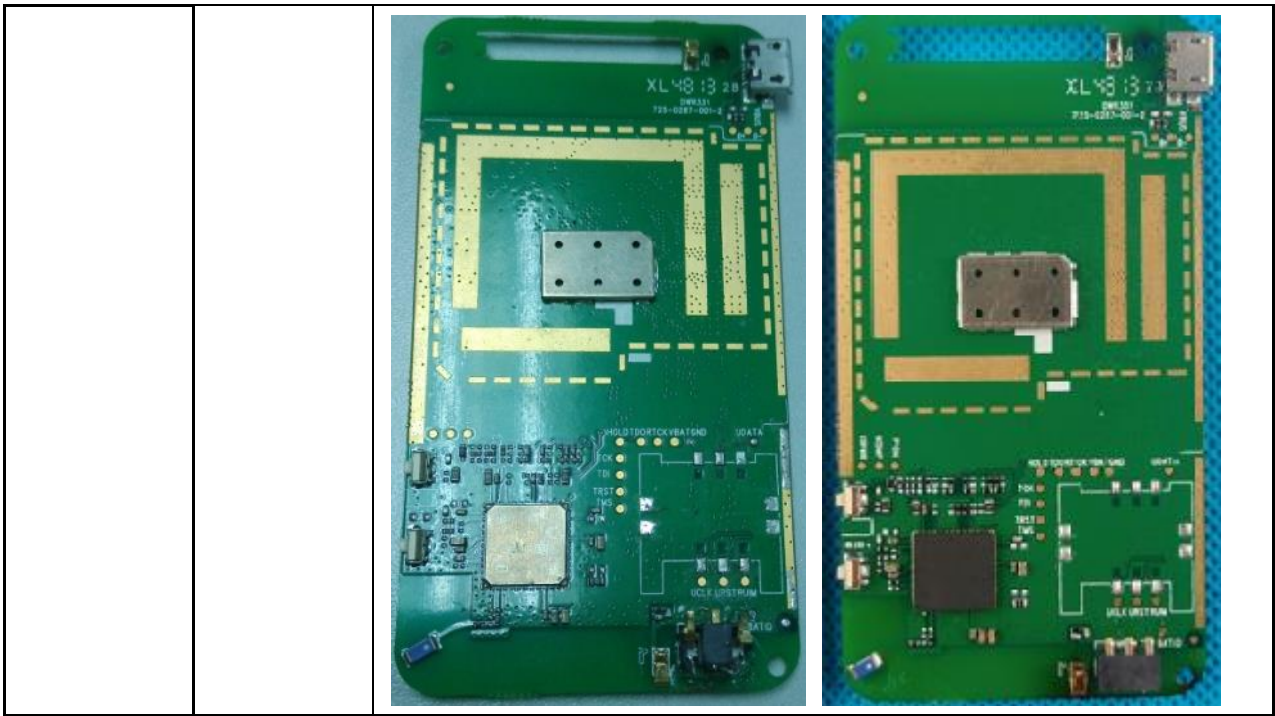
Please be notified that we, the undersigned,D-Link Corporation declare that the reason for this Class II permissive change are as below:

1. Update 3 PIN single-line package battery connector from 542-0325-002 to 542-0325-003;
2. Update 5 PIN Micro USB type connector from 542-0326-001 to 542-1115-002;
3. The manufactory of WiFi module from Murata CMEH19BAAA-001 to AzureWave AW-NH387. The AzureWave AW-NH387 module is pin to pin with Murata CMEH19BAAA-001, and have the similar structure and performance. The pin-to-pin compatible of new WiFi chip is the same as the original WiFi chip. The new WiFi chip has the same basic function as the old chip. No change in radio parameters has occurred in the new WiFi chip. And the new WiFi chip is the same area as the old one.

Please refer to below for detailed information:

Part PN Change	Part Information	Original (原材料)	Current (当前物料)
J704	ATTPN	542-0325-002	542-0325-003
	Manufacturer	乾德	翰宇创新
	Manufacturer Part Number	PAN25-03581-1500	BT00J-03256-XX102
	Description	3 pin SINGLE IN-LINE PACKAGE CONNECTOR,5.8mm Height	3 pin SINGLE IN-LINE PACKAGE CONNECTOR,6.0mm Height
	Photo		

Part PN Change	Part Information	Original (原材料)	Current (当前物料)
U702	ATTPN	542-0326-001	542-1115-002
	Manufacturer	乾德	翰宇创新
	Manufacturer Part Number	UAF95-05253-1500	US003-05855-42102
	Description	5 pin Micro USB B type connector	5 pin Micro USB B type connector
	Photo		
Part PN Change	Part Information	Original (原材料)	Current (当前物料)
U701	ATTPN	500-0278-001	500-0278-002
	Manufacturer	Murata	AzureWave
	Manufacturer Part Number	CMEH19BAAA-001	AW-NH387
	Description	IEEE 802.11 b/g/n Wireless LAN & Bluetooth & FM Combo Module IC	IEEE 802.11 b/g/n Wireless LAN & Bluetooth & FM Combo Module IC
	Photo	<p>Original IC photo as below</p>  <p>Original PCBA photo as below</p>	<p>Current IC photo as below</p>  <p>Current PCBA photo as below</p>



WiFi PIN definition please view the PDF of PIN definition.

Thank you,  
Sincerely,

Company Name: D-Link Corporation

Company Address: No. 289, XinHu 3rd Re., NeiHu District, 114, Taipei City, Taiwan

Telephone: +886-2-6600-0123 ext.5821

Date: 2014/6/11

Sign: GK Lee