

1.1 Setting

Via the Profiles icon the user can create, modify and delete profiles as well as define default profiles.

1.1.1. New Profile

You can create your own personal profile. The Data Card supports two types of profile: RAS and NDIS. Each profile contains the account information that is used to establish the connection.



Follow the steps below to create a personalized profile:

1. Click the Profile button.
2. Click the New button to activate the wizard to help you create a new profile.

3. Select the profile type, NDIS or RAS, and enter the name for the connection.
4. Enter the parameters relative to the APN, (only in the case of a RAS connection), and the telephone number. This data
can be obtained from your cellular phone network operator.

The image shows a Windows 'Add Profile' dialog box. At the top, there are two radio buttons for 'Type': 'NDIS' (selected) and 'RAS'. Below this are three text input fields: 'Profile Name', 'APN', and 'Phone Number' (with a placeholder '*99#'). A checked checkbox labeled 'DHCP' is followed by 'IP' and 'DNS' input fields. An 'Authentication' section contains three radio buttons: 'None', 'PAP' (selected), and 'CHAP'. Below this is a checkbox for 'Save User Name / Password' and two input fields for 'User Name' and 'Password'. At the bottom left is a checkbox for 'Set as Default Profile'. At the bottom right are 'OK' and 'Cancel' buttons.

5. Confirm the choices made by clicking the OK button.

1.1.1.1. Editing

1. Click the Profile button.
2. Select a profile and click the Edit button.
3. Click on the selected field and type in the updated information .
4. Click the OK button to close the Edit Profile window.

1.1.1.2. Deleting Single Profiles

1. Click the Profile button.
2. Select the profile and click the Delete button.
3. Click the Yes button to confirm the deletion.

1.1.1.3. Deleting All

1. Click the Profile button.
2. Select the profiles to delete.
3. Click the Delete button.

1.1.1.4. Setting as Default Profile

1. Click the Profile button.
2. Select the profile to be used as the Default one .
3. Click Set as Default Profile.

1.1.2 PIN

The DWM-156 can manage SIM-related information such as PIN code enabling/disabling, changing PIN1/PIN2.

1.1.2.1. Enabling/Disabling PIN Code

To prevent unauthorized use of the SIM card a PIN code can be used for security.

Disable (default)

1. Select Profile > PIN > Disable.

Enable

1. Select Profile > PIN > Enable.
2. Enter the correct PIN code

Note: The PIN is provided by the network provider.

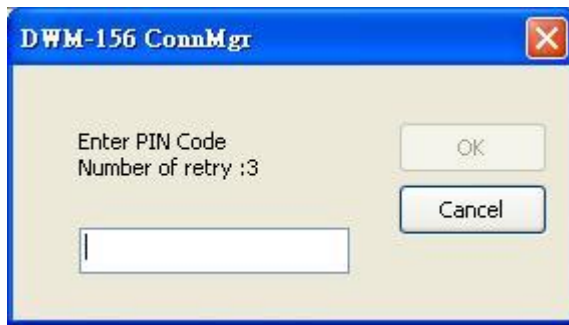
3. Click the OK button to enable.

Warning: The PIN code must be entered correctly within three [3] tries. Failure to do so will result in the SIM card being blocked.

If a PIN number has been enabled, the user will be asked to enter it before accessing the DWM-156 software. The following window will be displayed.

1. Enter the PIN code.

2. Click the OK button.



1.1.2.2 Changing PIN Code

SIM cards often contain two PIN codes that can be changed.

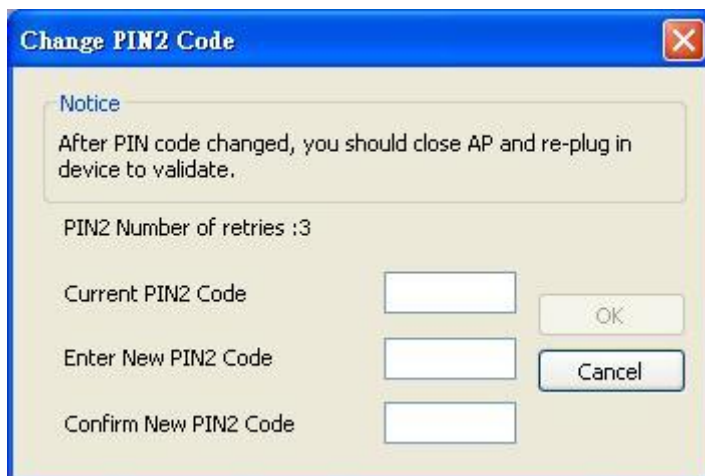
1. Select Profile > PIN > Change code.

2. Enter the details in the following fields: Enter Current PIN2 Code, Enter New PIN2 Code and Confirm New PIN2 Code.

Warning: The current PIN code must be entered correctly within three [3] tries. Failure to do so will result in the SIM card being blocked.

3. Click the OK button to change.

4. When the procedure completes a window is displayed. Click the OK button to exit.



1.1.3. Band Settings

The DWM-156 supports three options for band selection:

Option	Description
Automatic	The DWM-156 automatically selects the band on the basis of the networks available in current area and those supported by the Data Card.
3G only	The Data Card can be used exclusively with the 3G UMTS/HSPA service (used in Europe, Asia and Australia).
2G only	The Data Card can be used exclusively with the 2G GSM/GPRS service or the EDGE 850/900/1800/1900.

To modify the band settings, proceed as follows:

1. Select Profile > Band.
2. Select Band tab.
3. Select Automatic, 3G only or 2G only.
4. Click the Apply button and then OK.



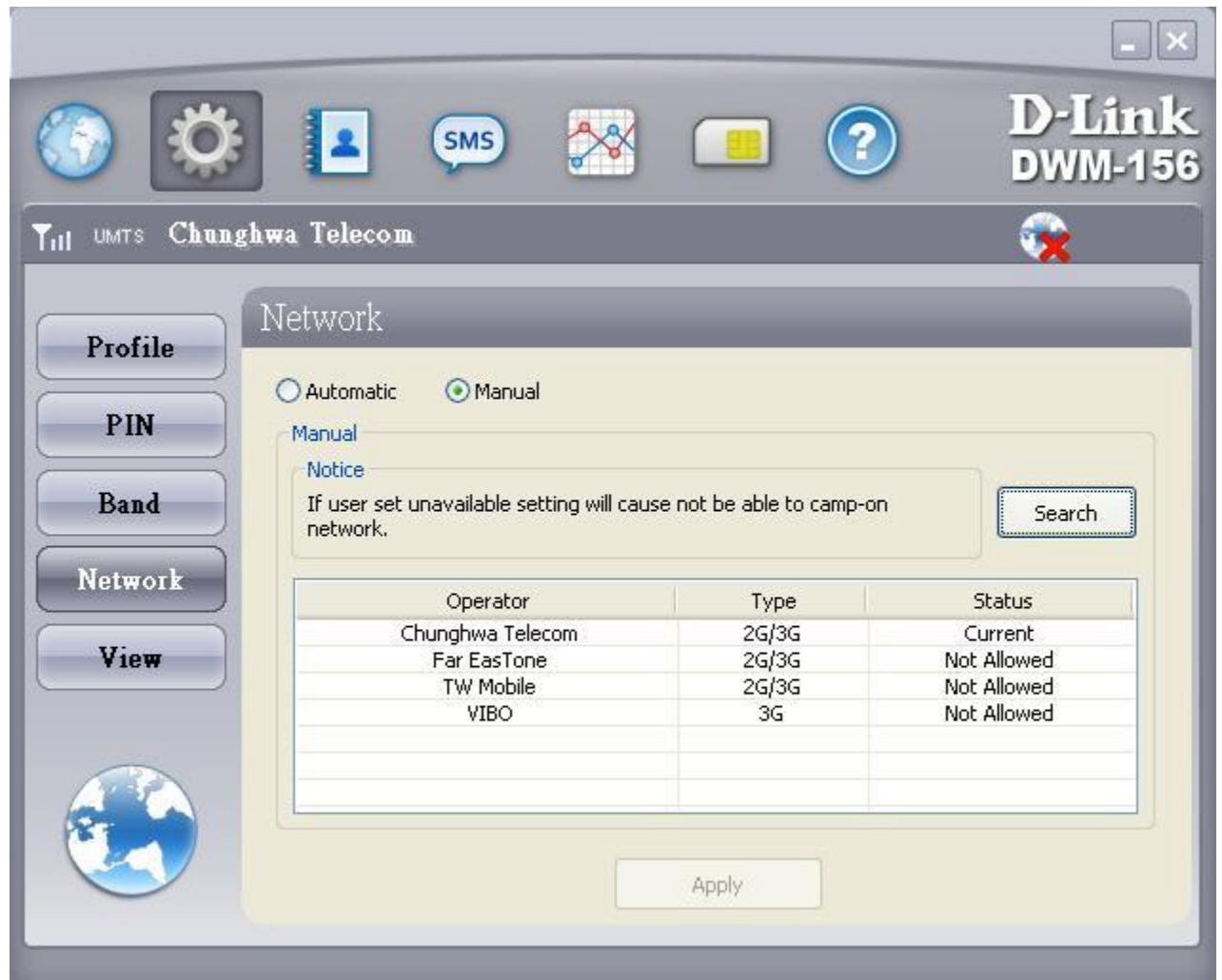
1.1.4 Network Settings

The geographical area where the Data Card is used may be covered by more than one network. The management software uses two options for selecting the network.

Option	Description
Automatic	By default the Data Card will select the Taiwan Mobile network automatically.
Manual	Users can use the Data Card to get a list of the networks and select an available network to use.

To set the network manually, proceed as follows:

1. Select Profile > Network.
2. Select Manual.
3. Click the Search button to view all the networks available.
4. Select a network operator and click the Apply button.



1.2 Phone

The DWM-156 contacts manager allows you to display all the contacts on the PC or on the SIM card. Contacts can be added, edited or deleted.

1.2.1. Contacts

1. Click the Contacts button.
2. Click the Add button.

3. In the Add Contact window, enter the name and telephone number of the contact, and where to store the details

(PC or SIM).

4. Click the OK button to add the contact.



1.2.1.1 Editing Contacts

1. Click the Contacts button.
2. Select the contact to edit.
3. Click the Edit button.
4. Modify the contact's details.
5. Click the OK button to save the changes.

1.2.1.2 Deleting Single Contacts

1. Click the Contacts button.
2. Select the contact to delete.
3. The message box "Do you want to delete selected contact(s)?" pops up.
4. Click the Delete button.
5. Click the Yes button to confirm the deletion.
6. The message box "Done" pops up. Click the OK button.

1.2.1.3 Deleting Multiple Contacts

1. Click the Contacts button.
2. Click the Ctrl and select the contact to delete.
3. The message box "Do you want to delete selected contact(s)?" pops up.
4. Click the Delete button.
5. Click the Yes button to confirm the deletion.
6. The message box "Done" pops up. Click the OK button.

1.2.2 Call log

1. You can see the call log on the list.
2. Clear all calls.
3. The message box "Do you want to clear all logs?" pops up. Choose Y.

1.2.3. Call Settings

1.2.3.1 Call Barring

1. Select Contacts > Call Settings > Call Barring.
2. After Querying finish, you can set outgoing calls and incoming call, the drop-down lists of outgoing calls are all, International, International except to home and off and the drop-down of incoming calls are all, When roaming and off.
3. Choose one of them, enter Call Barring code, press OK button to confirm it. You can see SS processing.

1.2.3.2 Call Divert

1. Select Contacts > Call Settings > Call Divert.
2. You can Enable "All voice calls", "If busy", "If not answered", "If out of reach", if you enable All voice calls, please enter the phone number. You can also choose 5 to 30 sec when you select "If not answered".

1.2.3.3 Call Waiting

1. Select Contacts > Call Settings > Call waiting.
2. You can choose on and off , press ok, the success message box will pop up.

1.2.3.4 Send Caller ID

1. Select Contacts > Call Settings > Send caller ID.
2. You can choose on and off , press ok, the success message box will pop up.

1.2.4 Dialer

1.2.4.1 Making call from the Contact

1. Select the contacts that you'd like to dial.
2. Click the make call button.

1.2.4.2 Ending call from the Contact

1. Click the ending call button.

1.3.Text Messaging (SMS)

DWM-156 allows the management of Text Messages (SMS) like a a mobile phone, that is sending, receiving, replying,

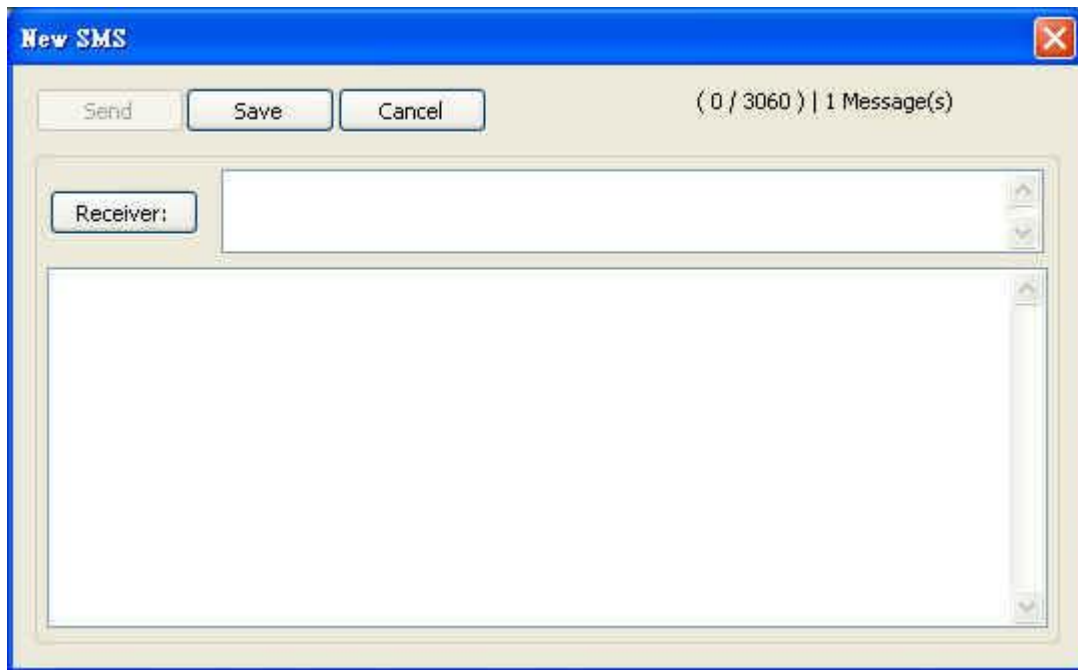
forwarding and deleting messages.

1.3.1. Writing/Sending a Text Message

1. Click the SMS button.
2. Click the New button.
3. Enter the recipient's phone number, or click the Contacts button to see the contacts present in the PC phone book or on

the SIM card. In the Contacts window, click the box next to the name of the recipients and click the OK button to return to

the New SMS window.



4. Enter the message to send.
5. Click the Send button to send the message.

1.3.2. Replying to a Text Message

1. Click the SMS button.
2. Click the Reply button.
3. Enter the message and click the Send button to send the message.

1.3.3. Forwarding a Text Message

1. Click the SMS button.
2. Select the message to forward.
3. Click the Forward button.
4. Select the contact to whom to forward.
5. Click the Send button to send the message.

1.3.4. Deleting a Single Text Message

1. Click the SMS button.

2. Select the appropriate message and click the Delete button.
3. Click the Yes button to delete the message.

1.3.5. Deleting Multiple Text Messages

1. Click the SMS button.
2. Select the appropriate messages.
3. Click the Delete button to delete all the messages.
4. Click the Yes button to delete the messages.

1.3.6. Saving a Sender in Contacts


1. Click the SMS button and select a message.
2. Right-click the mouse and select Save to Contacts.
3. In the Add Contact window, enter the contact name.
4. Click the OK button to save the contact.
5. On saving the contact a Success window is displayed. Click the OK button to close the window.

1.3.7. SMS Settings

DWM-156 allows to change the Service Center number , the message validity period and whether to store outgoing messages.

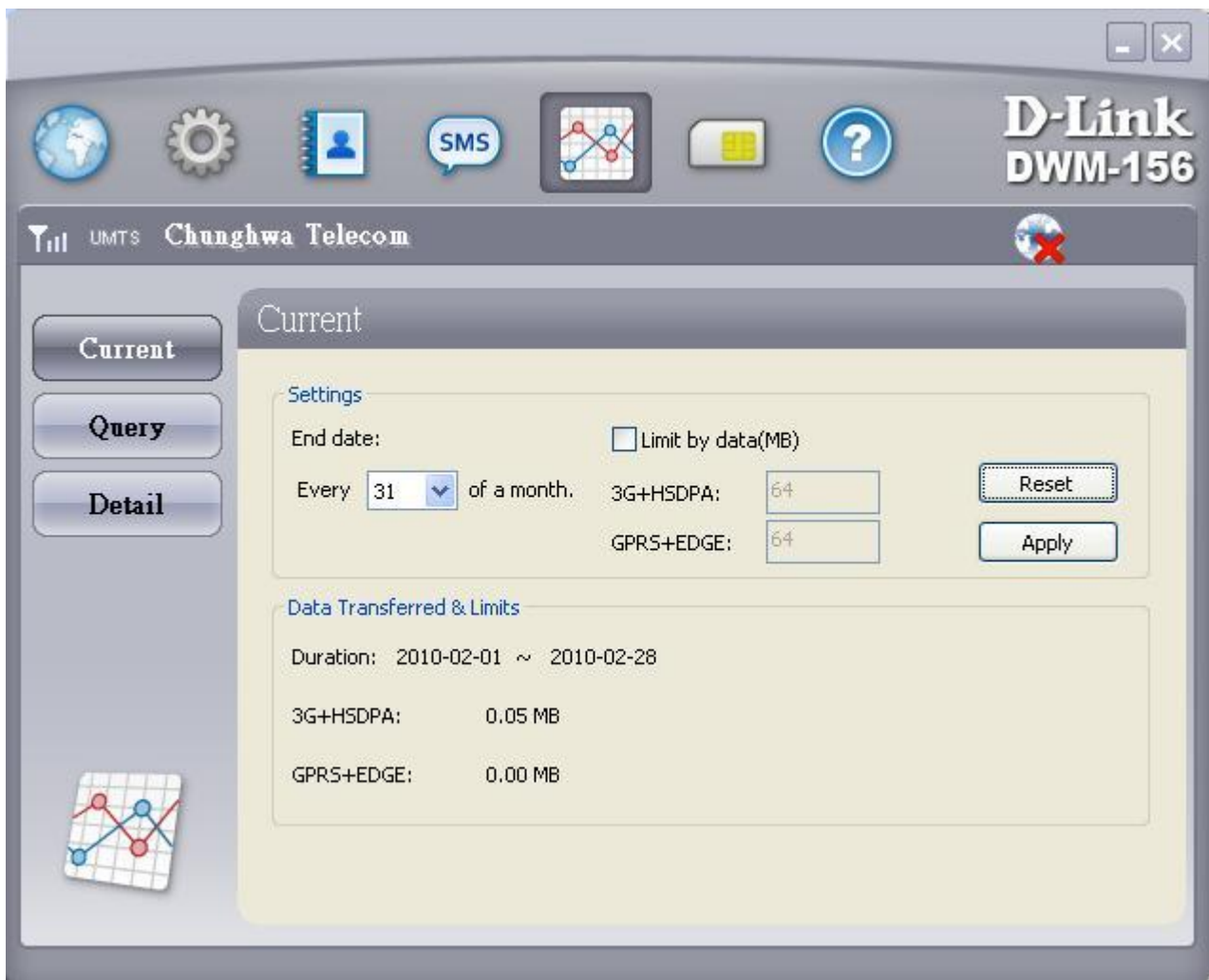
1. Select SMS > SMS Settings.
2. If needed, enter the new Service Center Number.
- 3 From the drop- down list choose the Validity Period of messages.
4. Check the box to select if messages are to be stored.
5. Click the OK button to save the details.

1.4 Usage

The History Connection table can be activated by clicking the button  and summarizes the information below:

Limits can be set on the duration of a connection. These limits can be set either on the basis of the volume of Data

exchanged either of 3G/HSDPA or of GPRS+EDGE.



1.4.1. Current

1. Select History > Query.
2. For the Query Setting, choose the Start date and End date.
3. Check the Query button.
4. You can see the Query Result 3G+HSDPA and GPRS+EDGE.

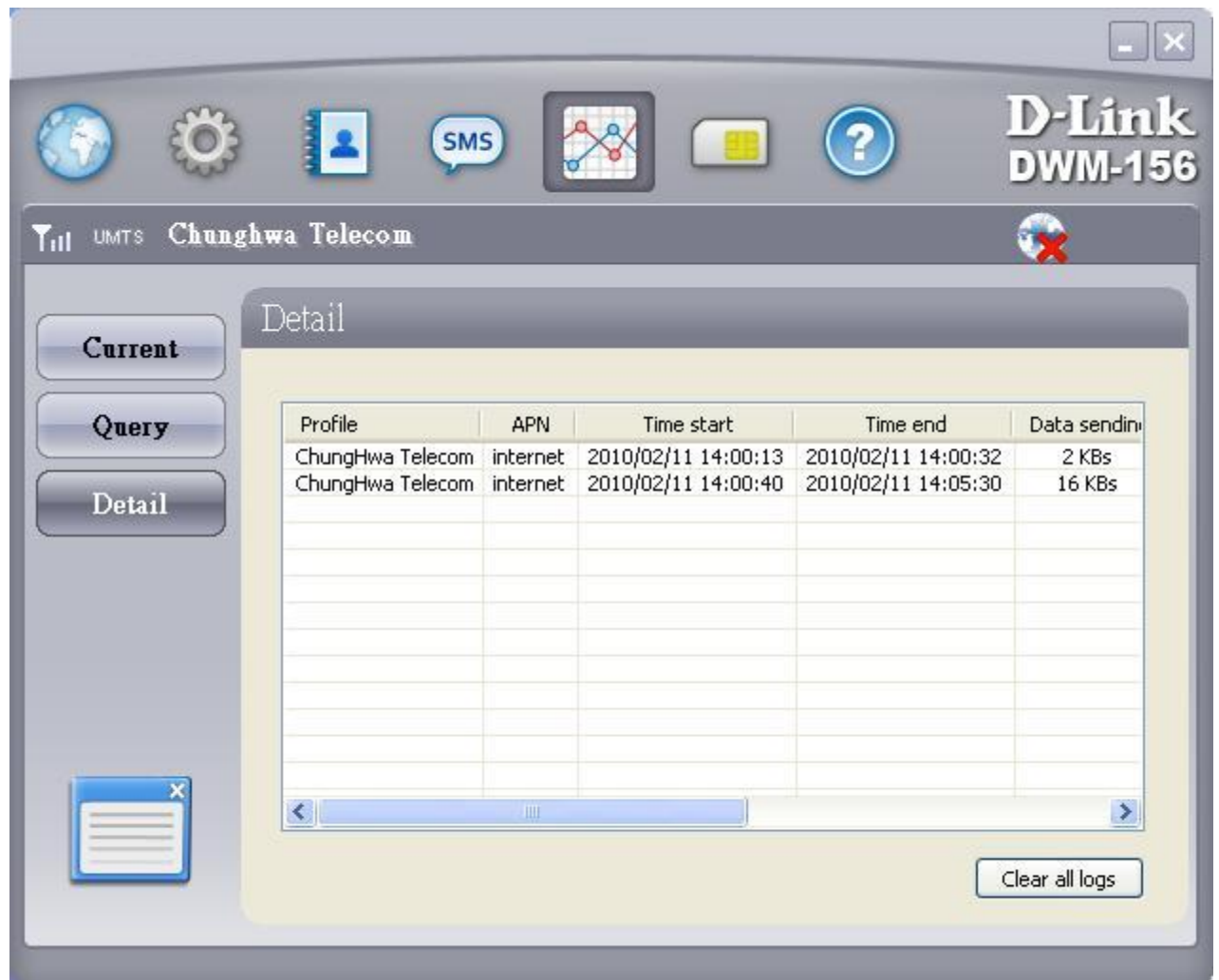
1.4.2. Query

1. Select History > Current.
2. Choose Every date of a month from the list box.
3. Check the Limit by Data checkbox.
4. Enter the value required between 100MB and 10000MB.
5. Click the Apply button to save the settings.

1.4.3. Detail

Select History > Detail. You can see the History Connection table can be activated summarizes as below.

- Profile – the names of the profiles used.
- APN – type of connection used.
- Time Start –The Time Start for the connection in the hh:mm:ss format.
- Time End –The Time End for the connection in the hh:mm:ss format.
- Data sending – total number of bytes transmitted.
- Data receiving – total number of bytes received.
- Instant speed max. up/down – the maximum speed achieved for sending and receiving data.
- Average speed up/down – the average speed achieved for sending and receiving data.
- History Connection, Current month or Previous Month – Allows to display the Connections. statistics for the current month.



1. Click Clear all logs to delete the log recordings.

1.5 Tools

1.5.1 USSD

1. Add.
2. Input Name and Code.

1.5.2. STK

1. Click the SIM Tool Kit  icon.

2. The SIM Tool Kit is provided by the telephone service provider that provides the different types of services.

3. Select the service desired.
4. Click the OK button to confirm your selection.

The display screen is automatically updated to correspond to the selections made.

1.6 Help

1. Click the help icon.
2. Enter the user manual.

FCC Regulations:

●This USB Dongle complies with part 15 of the FCC Rules. Operation is subject to the following two conditions: (1) This device may not cause harmful interference, and (2) this device must accept any interference received, including interference that may cause undesired operation.

●This USB Dongle has been tested and found to comply with the limits for a Class B digital device, pursuant to Part 15 of the FCC Rules. These limits are designed to provide reasonable protection against harmful interference in a residential installation. This equipment generates, uses and can radiated radio frequency energy and, if not installed and used in accordance with the instructions, may cause harmful interference to radio communications. However, there is no guarantee that interference will not occur in a particular installation. If this equipment does cause harmful interference to radio or television reception, which can be determined by turning the equipment off and on, the user is encouraged to try to correct the interference by one or more of the following measures:

- Reorient or relocate the receiving antenna.
- Increase the separation between the equipment and receiver.
- Connect the equipment into an outlet on a circuit different from that to which the receiver is connected.
- Consult the dealer or an experienced radio/TV technician for help.

Changes or modifications not expressly approved by the party responsible for compliance could void the user's authority to operate the equipment.

●The antenna(s) used for this transmitter must not be co-located or operating in conjunction with any other antenna or transmitter.

► RF Exposure Information (SAR)

This device meets the government's requirements for exposure to radio waves. This USB Dongle is designed and manufactured not to exceed the emission limits for exposure to radio frequency (RF) energy set by the Federal Communications Commission of the U.S. Government.

The exposure standard for wireless device employs a unit of measurement known as the Specific Absorption Rate, or SAR. The SAR limit set by the FCC is 1.6W/kg. *Tests for SAR are conducted using standard operating positions accepted by the FCC with the device transmitting at its highest certified power level in all tested frequency bands. Although the SAR is determined at the highest certified power level, the actual SAR level of the USB Dongle while operating can be well below the maximum value. This is because the device is designed to operate at multiple power levels so as to use only the power required to reach the network. In general, the closer you are to a wireless base station antenna, the lower the power output.

The highest SAR value for the device as reported to the FCC when tested for body, as described in this user guide, is 1.26 W/kg. While there may be differences between the SAR levels of various USB Dongles and at various positions, they all meet the government requirement.

The FCC has granted an Equipment Authorization for this device with all reported SAR levels evaluated as in compliance with the FCC RF exposure guidelines. SAR information on this device is on file with the FCC and can be found under the Display Grant section of www.fcc.gov/oet/ea/fccid after searching on FCC ID: KA2WM156A2.

For body operation, this device has been tested and meets the FCC RF exposure guidelines for use the positions the device a minimum of 1.0 cm from the body. Use of other accessories may not ensure compliance with FCC RF exposure guidelines.

This USB dongle transmitter is approved for use in typical laptop computers. To comply with FCC RF exposure requirements, this USB dongle should not be used in other devices or certain laptop and tablet computer configurations where the USB connectors on the host computer are unable to provide or ensure the necessary operating configurations intended for the device and its users or bystanders to satisfy RF exposure compliance requirements. This transmitter must not be collocated or operating in conjunction with any other antenna or transmitter.