

USER MANUAL

DWA-652

VERSION 1.1



D-Link[®]

WIRELESS

Table of Contents

Product Overview	3	Wireless Security	30
Package Contents.....	3	What is WPA™?	30
System Requirements	3	Configure WPA/WPA2™-Personal	31
Introduction.....	4	Using the D-Link Connection Manager.....	31
Features.....	5	Using Windows Vista	33
Hardware Overview	6	Using the Windows XP Utility.....	35
Installation	7	Configure WPA/WPA2-Enterprise	37
Getting Started	7	Using the D-Link Connection Manager.....	37
Remove Existing Installations	7	Configure 802.1x (RADIUS)	38
Disable Other Wireless Adapters	8	Using the D-Link Utility	38
Wireless Installation Considerations.....	10	Troubleshooting	39
Adapter Installation.....	11	Wireless Basics	43
Configuration	17	Wireless Modes	47
D-Link Wireless Connection Manager	17	Networking Basics	48
Wireless Networks	18	Check your IP address	48
Wi-Fi® Protected Setup (WPS).....	19	Windows XP/2000 Users	48
My Wireless Networks	22	Windows Vista Users	48
Add Profile.....	23	Statically Assign an IP address	49
Modify Profile.....	24	Windows XP/2000 Users	49
Support.....	25	Windows Vista Users	50
About	26	Technical Specifications	51
Connect to a Wireless Network	27	Contacting Technical Support	52
Using Windows® Vista™	27	Warranty	53
Using Windows XP	29	Registration	59

Package Contents

- D-Link DWA-652 Xtreme N™ Notebook Adapter
- Manual and Warranty on CD
- D-Link Wireless Connection Manager on CD
- Quick Installation Guide



System Requirements

- A computer or laptop with an available 32-bit CardBus slot
- Windows Vista®, XP (Service Pack 2), or 2000 (Service Pack 4)
- CD-ROM Drive
- 300MHz processor and at least 64MB of RAM
- A draft 802.11n or 802.11g access point or wireless router

Introduction

The D-Link Xtreme N™ Notebook Adapter (DWA-652) is a draft 802.11n client device that delivers unrivaled wireless performance for your notebook computer. With the DWA-652, you can add or upgrade your notebook's wireless connectivity without having to purchase a new notebook. Once connected, access your network's high-speed Internet connection while sharing photos, files, music, video, printers, and storage. Get a better Internet experience with a faster wireless connection so you can enjoy digital phone calls, gaming, downloading, and video streaming.

Powered by Xtreme N™ technology, the DWA-652 provides a faster wireless connection and superior reception than 802.11g*. The DWA-652 is designed for use in bigger homes and for those that demand higher networking. Maximize wireless performance by connecting this notebook adapter to a Xtreme N™ router and stay connected from virtually anywhere in the home. This notebook adapter supports WPA and WPA2 encryption to prevent outside intrusion and protect your personal information from being exposed.

D-Link's Quick Setup Wizard guides you step-by-step through the installation process. The D-Link Wireless Manager is included with this product to keep track of all your most frequently accessed networks.

With unmatched wireless performance, reception, and security protection, the D-Link Xtreme N™ Notebook Adapter (DWA-652) is the best choice for easily adding or upgrading wireless connectivity to your notebook computer.

* Maximum wireless signal rate derived from IEEE Standard 802.11g and Draft 802.11n specifications. Actual data throughput will vary. Network conditions and environmental factors, including volume of network traffic, building materials and construction, and network overhead, lower actual data throughput rate. Environmental conditions will adversely affect wireless signal range.

** All devices in the wireless network must be enabled with D-Link Xtreme N™ Technology

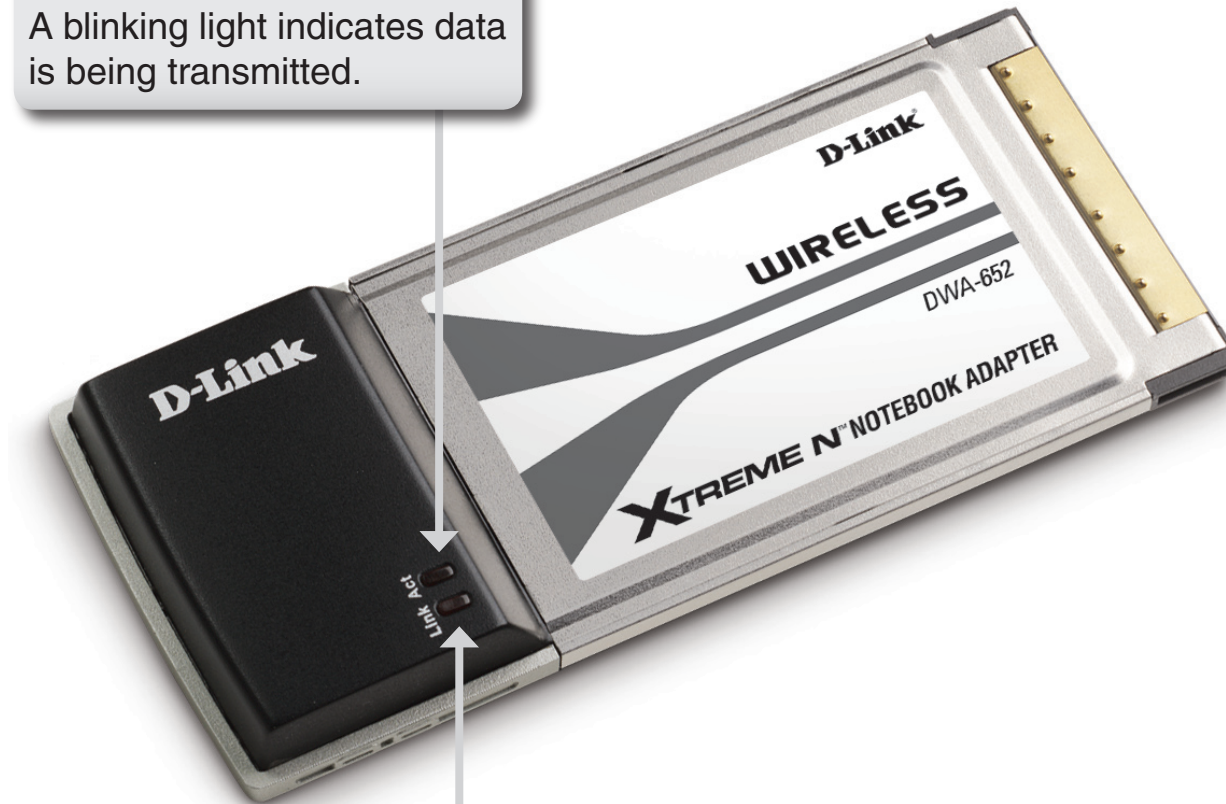
Features

- **Faster Wireless Networking** - Enable wireless connectivity on your notebook computer with the DWA-652. With the performance of D-Link's Xtreme N™ line of wireless products, the DWA-652 delivers an unsurpassed wireless experience. Perform multiple network tasks at once with the speed provided by this Wireless Adapter.
- **Compatible with 802.11g Devices** - Fully compatible with the 802.11g standard, the DWA-652 can connect with existing 802.11g compliant routers, access points and cards. That means you can still communicate with colleagues and friends while you have the ability to link to even more wireless networks.
- **Better Security with 802.1x and WPA** - With the DWA-652 in your laptop PC you can securely connect to a wireless network using 802.1x for wireless authentication, as well as WPA (Wi-Fi Protected Access) providing you a much higher level of security for your data and communication than has previously been available.
- **32-bit Cardbus Performance/Plug & Play Connectivity** - The DWA-652 is a powerful 32-bit Notebook Adapter that installs quickly and easily into laptop PCs, and when used with other D-Link Xtreme N™ products will automatically connect to the network out of the box.
- **Total Performance** - Upgrade your notebook with the latest draft 802.11n technology.
- **Total Wireless Protection** - Connect to secure wireless networks using WPA and WPA2.
- **Total Connection** - Get reception throughout your home by connecting to a Xtreme N™ router.

Hardware Overview

Activity LED

A blinking light indicates data is being transmitted.



Link LED

A steady light indicates a connection to a wireless network.

Installation

This section will walk you through the installation process. If you have a built-in wireless adapter, please disable it in device manager before installing your D-Link adapter. Also, if you have previously installed another wireless adapter, please make sure any software is uninstalled.

Getting Started

Before installing your new D-Link wireless adapter, please verify the following:

- Remove any previous installations of wireless adapters
- Disable any built-in wireless adapters
- Verify the settings such as the SSID and security settings of the network(s) you want to connect to

Remove Existing Installations

If you've installed a different manufacturer's adapter or a different model D-Link adapter, make sure the software is uninstalled before installing the new software. Some utilities may cause a conflict with the new software. If you plan to use multiple adapters at different times, make sure the utilities are not set to load when your computer boots up. Windows® XP users may use the built-in wireless utility for all adapters.

To remove any old software:

Windows® XP/Vista users: Click **Start > Control Panel > Add or Remove Programs**.

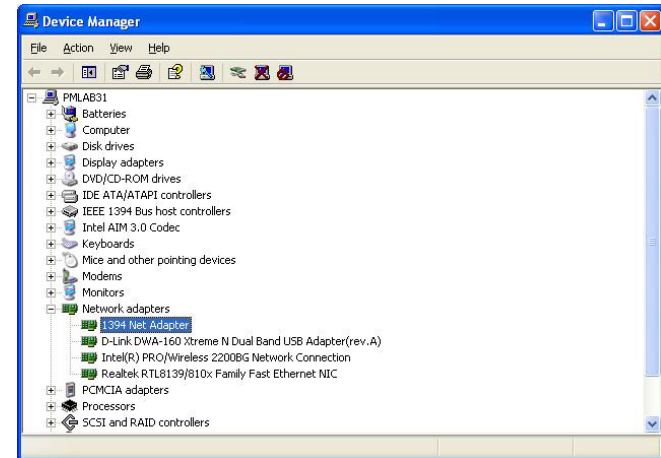
Windows® 2000 users: Click **Start > Settings > Control Panel > Add or Remove Programs**.

Disable Other Wireless Adapters

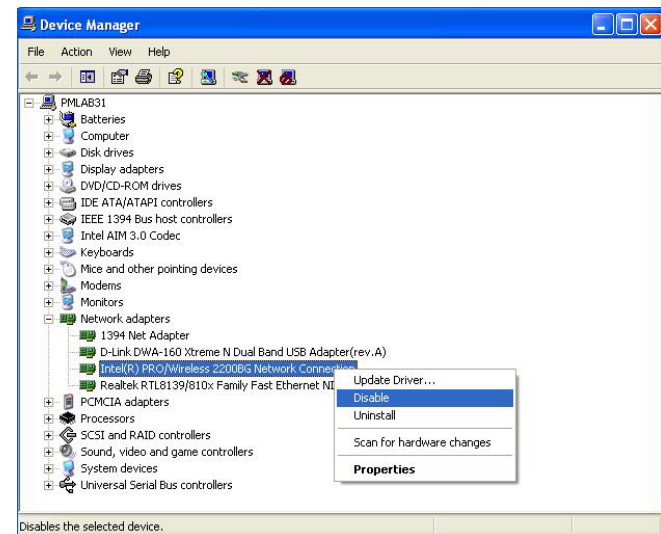
Most newer laptops may include a built-in wireless adapter. To prevent any conflicts with the D-Link wireless adapter, it is recommended to disable the wireless adapter (as well as any unused Ethernet adapters).

From the desktop, right-click on the **My Computer** icon and select **Properties**.

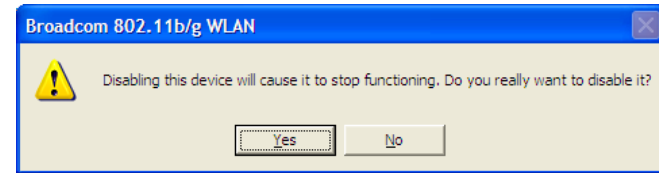
Click the **Hardware** tab and then click **Device Manager**. Scroll down the list and click the **+** sign to the left of **Network Adapters**.



Right-click the adapter you would like to disable and select **Disable**.

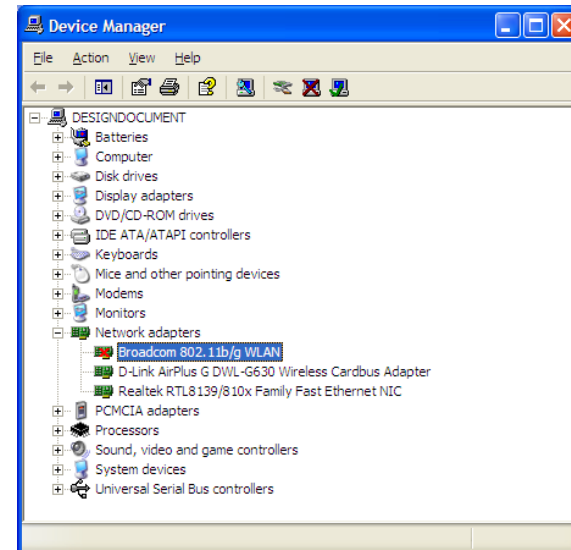


Click **Yes** to disable the adapter.



The adapter is now disabled. When disabled, a red X will be displayed.

Disabling the adapter will not remove the drivers. If you would like to use the adapter, simply right-click it and select **Enable**.



Wireless Installation Considerations

The D-Link wireless adapter lets you access your network using a wireless connection from virtually anywhere within the operating range of your wireless network. Keep in mind, however, that the number, thickness and location of walls, ceilings, or other objects that the wireless signals must pass through, may limit the range. Typical ranges vary depending on the types of materials and background RF (radio frequency) noise in your home or business. The key to maximizing wireless range is to follow these basic guidelines:

1. Keep the number of walls and ceilings between the D-Link adapter and other network devices to a minimum - each wall or ceiling can reduce your adapter's range from 3-90 feet (1-30 meters.) Position your devices so that the number of walls or ceilings is minimized.
2. Be aware of the direct line between network devices. A wall that is 1.5 feet thick (.5 meters), at a 45-degree angle appears to be almost 3 feet (1 meter) thick. At a 2-degree angle it looks over 42 feet (14 meters) thick! Position devices so that the signal will travel straight through a wall or ceiling (instead of at an angle) for better reception.
3. Building Materials make a difference. A solid metal door or aluminum studs may have a negative effect on range. Try to position access points, wireless routers, and computers so that the signal passes through drywall or open doorways. Materials and objects such as glass, steel, metal, walls with insulation, water (fish tanks), mirrors, file cabinets, brick, and concrete will degrade your wireless signal.
4. Keep your product away (at least 3-6 feet or 1-2 meters) from electrical devices or appliances that generate RF noise.
5. If you are using 2.4GHz cordless phones or X-10 (wireless products such as ceiling fans, lights, and home security systems), your wireless connection may degrade dramatically or drop completely. Make sure your 2.4GHz phone base is as far away from your wireless devices as possible. The base transmits a signal even if the phone is not in use.

Adapter Installation

Warning: Do NOT install the DWA-652 Xtreme N™ Notebook Adapter into your computer before installing the driver software from the D-Link CD.

Turn on the computer and Insert the D-Link DWA-652 Driver CD in the CD-ROM drive.

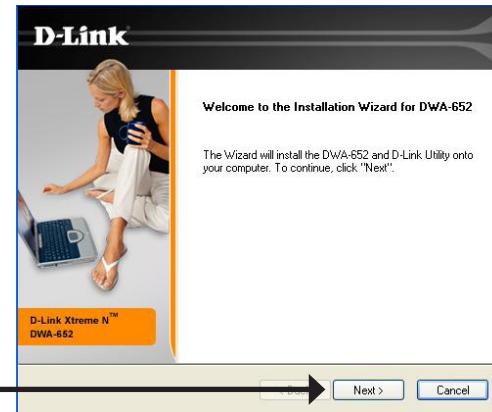
If the CD Autorun function does not automatically start on your computer, go to **Start > Run**. In the run box type **"D:\DWA652.exe"** (where **D:** represents the drive letter of your CD-ROM drive).

When the autorun screen appears, click **Install Drivers**.



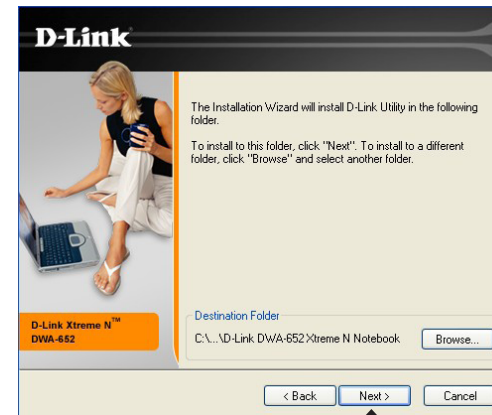
The *InstallShield Wizard* window will appear.

Click Next



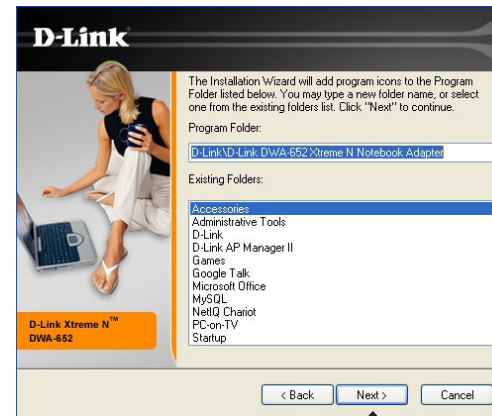
By default setup will install to the default location: *C:\Program Files\D-Link\DWA-652 Xtreme N Notebook*, where C: represents the drive letter of your hard drive. To install to a different location click **Browse** and specify the location.

Click Next



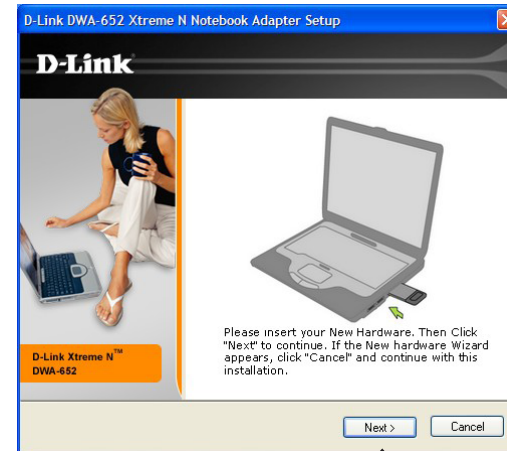
Select the Program Files folder location.

Click Next



Insert the adapter into an available USB port on your computer.

If the *Found New Hardware Wizard* appears, click **Cancel**.



Click Next

The Wireless Connection Wizard will now appear.

If you want to manually connect to a wireless network, refer to page 15. The following instructions will connect you to a wireless network using Wi-Fi® Protected Setup (WPS).



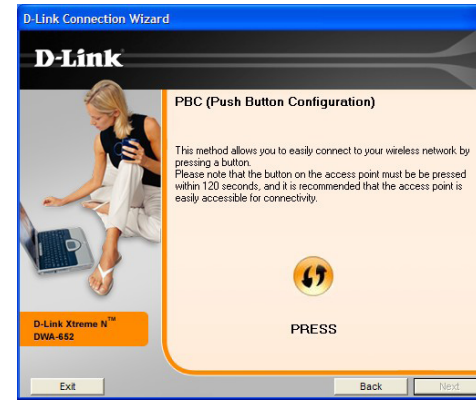
Click Next

Push Button Configuration (PBC)

To connect to your network using the WPS push button configuration method, click the virtual button as shown in the screenshot.

Press the WPS button on your access point or wireless router within 2 minutes to establish connectivity.

When this screen appears, you have successfully connected to your wireless network. Click **Next** to complete your setup.



Click **Next**

