

Test Laboratory: BTL Inc.

Date: 2018/1/6

### System Check\_B2450\_0106

**DUT: Dipole 2450 MHz D2450V2;SN:919;**

Communication System: UID 0, CW (0); Frequency: 2450 MHz; Duty Cycle: 1:1

Medium parameters used:  $f = 2450$  MHz;  $\sigma = 1.987$  S/m;  $\epsilon_r = 51.481$ ;  $\rho = 1000$  kg/m<sup>3</sup>

Ambient Temperature: 23.3 °C; Liquid Temperature: 22.5 °C

DASY Configuration:

- Probe: EX3DV4 - SN7396; ConvF(7.53, 7.53, 7.53); Calibrated: 2017/5/25;
- Sensor-Surface: 4mm (Mechanical Surface Detection),  $z = 1.0, 31.0$
- Electronics: DAE4 Sn1390; Calibrated: 2017/9/15
- Phantom: SAM Right; Type: Twin SAM; Serial: 1896
- DASY52 52.8.8(1258); SEMCAD X 14.6.10(7373)

**Area Scan (7x6x1):** Interpolated grid: dx=12 mm, dy=12 mm

Maximum value of SAR (interpolated) = 16.5 W/kg

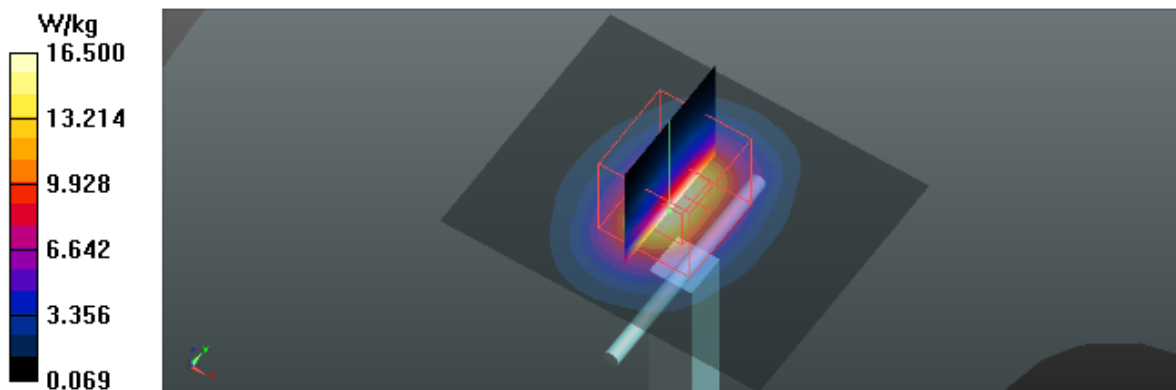
**Zoom Scan (7x7x7)/Cube 0:** Measurement grid: dx=5mm, dy=5mm, dz=5mm

Reference Value = 100.4 V/m; Power Drift = 0.02 dB

Peak SAR (extrapolated) = 26.7 W/kg

**SAR(1 g) = 12.9 W/kg; SAR(10 g) = 5.98 W/kg**

Maximum value of SAR (measured) = 14.6 W/kg



Test Laboratory: BTL Inc.

Date: 2018/1/6

### System Check\_B5300\_0106

**DUT: Dipole D5GHzV2;SN;1160;**

Communication System: UID 0, CW (0); Frequency: 5300 MHz; Duty Cycle: 1:1

Medium parameters used:  $f = 5300$  MHz;  $\sigma = 5.454$  S/m;  $\epsilon_r = 47.174$ ;  $\rho = 996$  kg/m<sup>3</sup>

Ambient Temperature: 23.3 °C; Liquid Temperature: 22.5 °C

DASY Configuration:

- Probe: EX3DV4 - SN7396; ConvF(4.93, 4.93, 4.93); Calibrated: 2017/5/25;
- Sensor-Surface: 2mm (Mechanical Surface Detection),  $z = 1.0, 23.0$
- Electronics: DAE4 Sn1390; Calibrated: 2017/9/15
- Phantom: SAM Front; Type: Twin SAM; Serial: 1784
- DASY52 52.8.8(1258); SEMCAD X 14.6.10(7373)

**Area Scan (7x5x1):** Interpolated grid: dx=10 mm, dy=10 mm

Maximum value of SAR (interpolated) = 17.4 W/kg

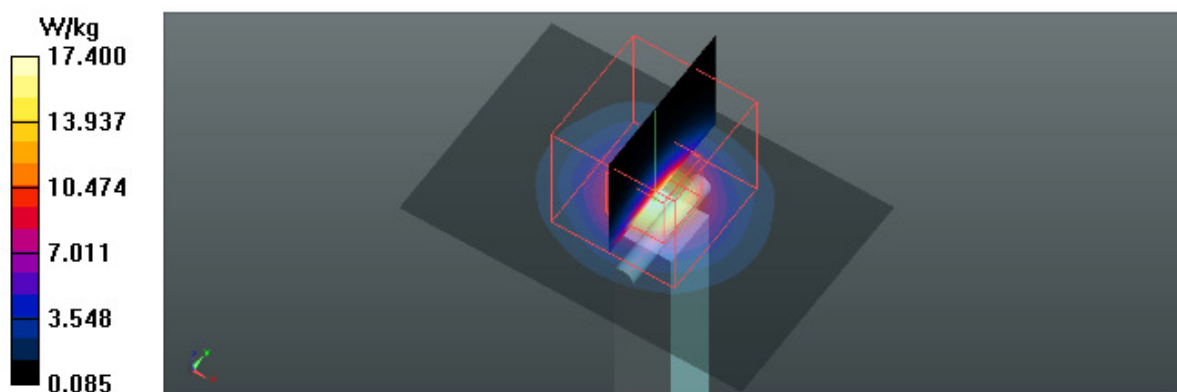
**Zoom Scan (7x7x12)/Cube 0:** Measurement grid: dx=4mm, dy=4mm, dz=2mm

Reference Value = 39.71 V/m; Power Drift = 0.00 dB

Peak SAR (extrapolated) = 33.5 W/kg

**SAR(1 g) = 7.82 W/kg; SAR(10 g) = 2.17 W/kg**

Maximum value of SAR (measured) = 16.8 W/kg



Test Laboratory: BTL Inc.

Date: 2018/1/6

### System Check\_B5600\_0106

**DUT: Dipole D5GHzV2;SN;1160;**

Communication System: UID 0, CW (0); Frequency: 5600 MHz; Duty Cycle: 1:1

Medium parameters used:  $f = 5600$  MHz;  $\sigma = 5.889$  S/m;  $\epsilon_r = 46.629$ ;  $\rho = 996$  kg/m<sup>3</sup>

Ambient Temperature: 23.3 °C; Liquid Temperature: 22.5 °C

DASY Configuration:

- Probe: EX3DV4 - SN7396; ConvF(4.19, 4.19, 4.19); Calibrated: 2017/5/25;
- Sensor-Surface: 2mm (Mechanical Surface Detection),  $z = 1.0, 31.0$
- Electronics: DAE4 Sn1390; Calibrated: 2017/9/15
- Phantom: SAM Front; Type: Twin SAM; Serial: 1784
- DASY52 52.8.8(1258); SEMCAD X 14.6.10(7373)

**Area Scan (6x6x1):** Interpolated grid: dx=10 mm, dy=10 mm

Maximum value of SAR (interpolated) = 22.9 W/kg

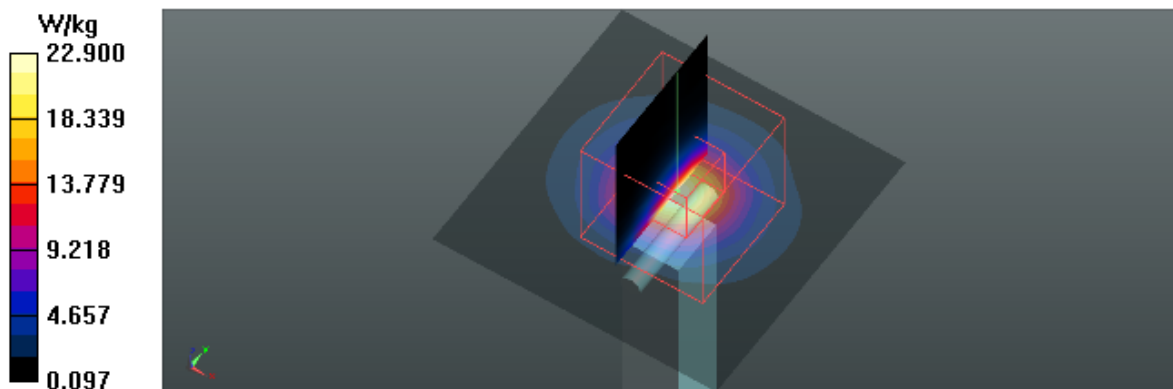
**Zoom Scan (7x7x16)/Cube 0:** Measurement grid: dx=4mm, dy=4mm, dz=2mm

Reference Value = 37.28 V/m; Power Drift = -0.03 dB

Peak SAR (extrapolated) = 35.3 W/kg

**SAR(1 g) = 8.27 W/kg; SAR(10 g) = 2.41 W/kg**

Maximum value of SAR (measured) = 23.1 W/kg



Test Laboratory: BTL Inc.

Date: 2018/1/6

### System Check\_B5800\_0106

**DUT: Dipole D5GHzV2;SN;1160;**

Communication System: UID 0, CW (0); Frequency: 5800 MHz; Duty Cycle: 1:1

Medium parameters used:  $f = 5800$  MHz;  $\sigma = 6.176$  S/m;  $\epsilon_r = 46.237$ ;  $\rho = 996$  kg/m<sup>3</sup>

Ambient Temperature: 23.3 °C; Liquid Temperature: 22.5 °C

DASY Configuration:

- Probe: EX3DV4 - SN7396; ConvF(4.52, 4.52, 4.52); Calibrated: 2017/5/25;
- Sensor-Surface: 2mm (Mechanical Surface Detection),  $z = 1.0, 31.0$
- Electronics: DAE4 Sn1390; Calibrated: 2017/9/15
- Phantom: SAM Front; Type: Twin SAM; Serial: 1784
- DASY52 52.8.8(1258); SEMCAD X 14.6.10(7373)

**Area Scan (6x6x1):** Interpolated grid: dx=10 mm, dy=10 mm

Maximum value of SAR (interpolated) = 21.5 W/kg

**Zoom Scan (7x7x12)/Cube 0:** Measurement grid: dx=4mm, dy=4mm, dz=2mm

Reference Value = 33.91 V/m; Power Drift = -0.03 dB

Peak SAR (extrapolated) = 41.2 W/kg

**SAR(1 g) = 7.92 W/kg; SAR(10 g) = 2.25 W/kg**

Maximum value of SAR (measured) = 17.8 W/kg

