

# D-Link Quick Installation Guide

This product can be set up using any current web browser, e.g., Internet Explorer 6 or Netscape Navigator 6.2.3.



## Before You Begin

Make sure you have all the necessary information and equipment on hand before beginning the installation.

## Check Your Package Contents



**DSL-2640T Wireless ADSL Router**



**CD-ROM (containing Manual)**



**Ethernet (CAT5 UTP) Cable**



**Telephone Cable**



**Power Adapter**



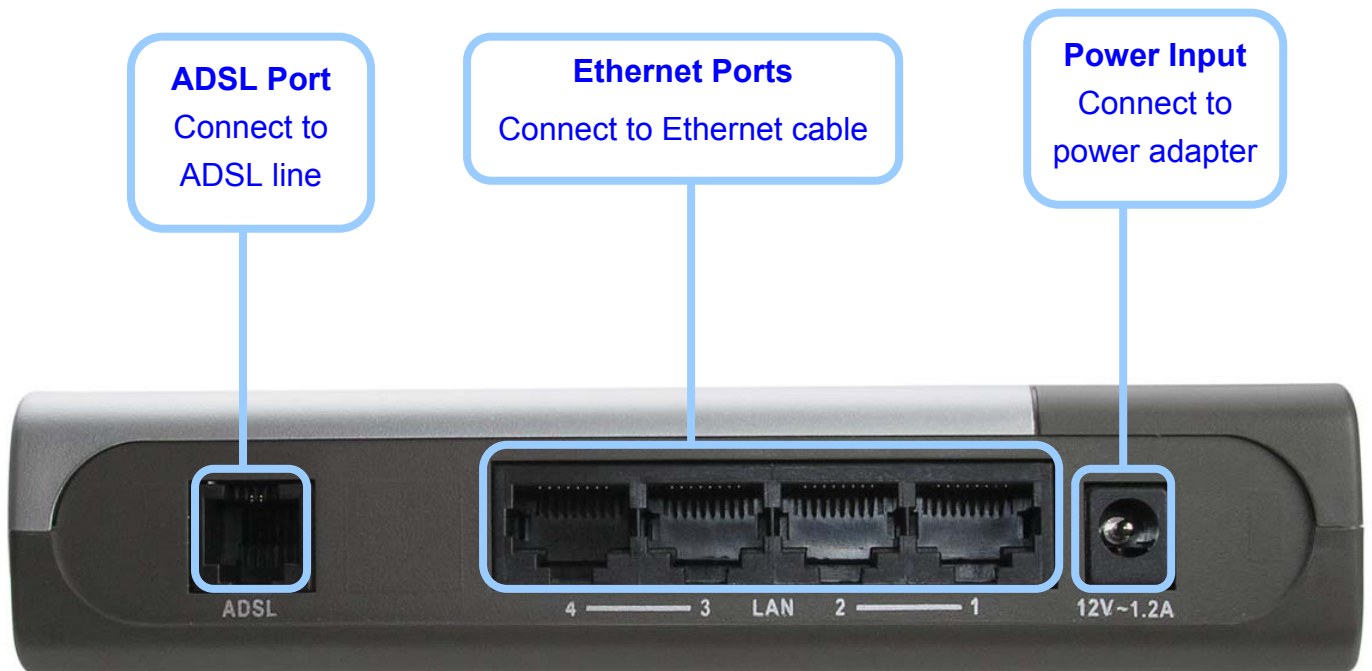
Using a power supply with a different voltage rating will damage and void the warranty for this product.

*If any of the items above are missing, please contact your reseller.*

# 1

## Connecting the Router to Your Computer

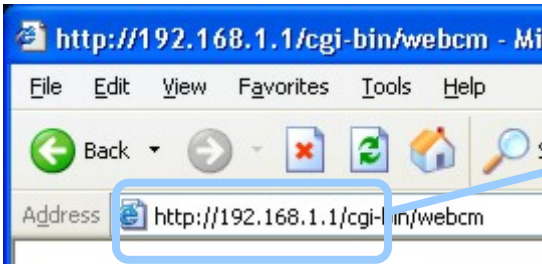
- A.** First, connect the power adapter to the receptor at the back panel of the DSL-2640T and then plug the other end of the power adapter to a wall outlet or power strip. The Power LED will turn on to indicate proper operation.
- B.** Insert one end of the cable into the Ethernet port on the back panel of the DSL-2640T and the other end of the cable to an Ethernet Adapter or available Ethernet port on your computer.



# 2

## Configuring the Router

To use your Web browser to access the web pages used to set up the Router, your computer must be configured to “**Obtain an IP address automatically**,” that is, you must change the IP network settings of your computer so that it is a **DHCP Client**. If you are using **Windows XP** and do not know how to change your network settings, skip ahead to **Appendix A** and read the instructions provided. You may also read the User Manual for instructions on changing IP settings for computers running Windows operating systems.



Open your Web browser and type “**http://192.168.1.1**” into the URL address box. Then press the **Enter** or **Return** key. The login dialog appears.

The logon pop-up screen will appear.

Type “**admin**” for the User Name and “**admin**” in the Password field.

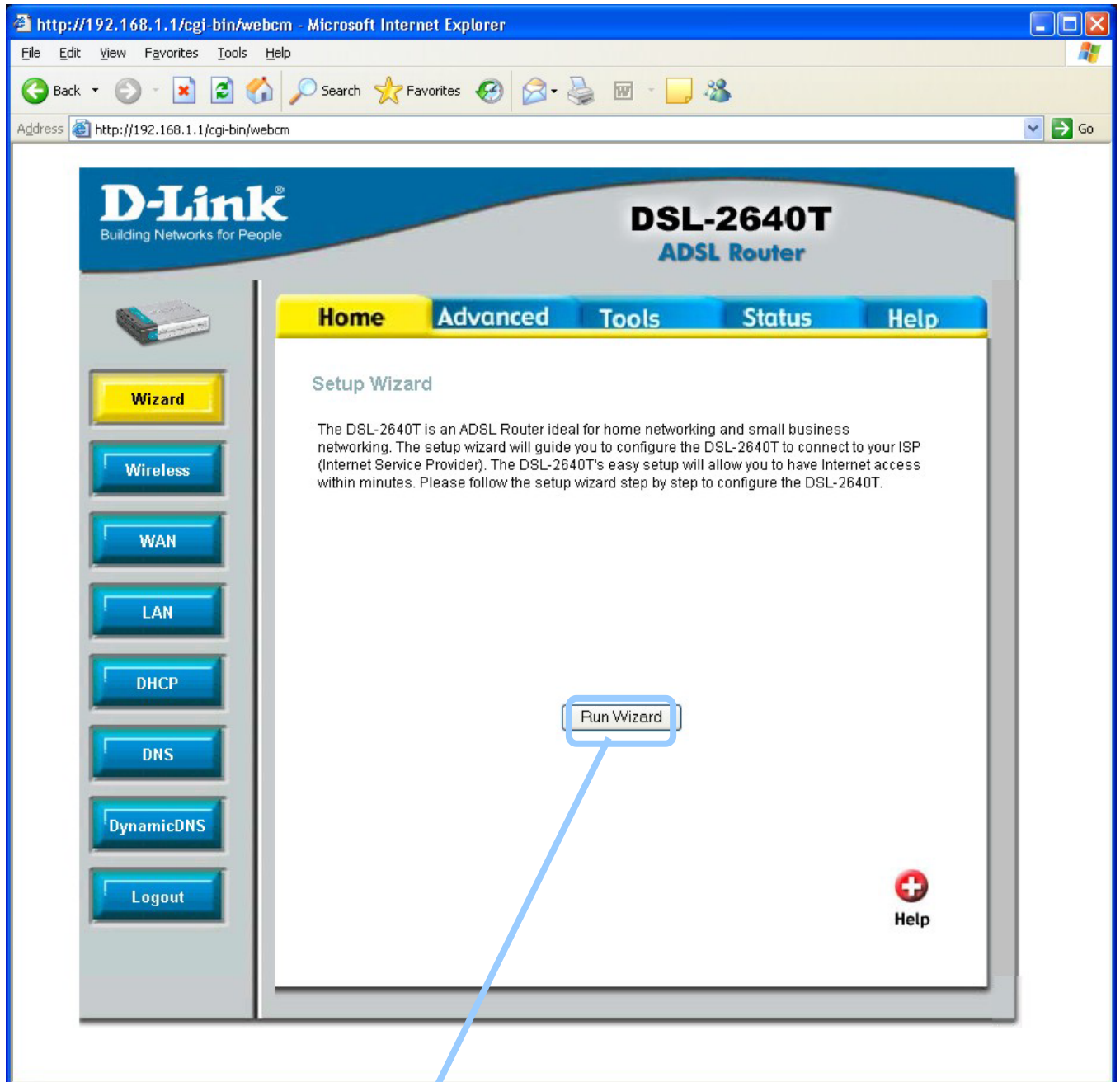


Click **OK**.

# 2

## Configuring the Router (continued)

Once you have logged in, the **Home** directory tab featuring the **Setup Wizard** window opens. Most users will be able to use the Setup Wizard to establish the ADSL connection to your ISP. To begin using the Setup Wizard, click on the **Run Wizard** button in the middle of the web page. The first pop-up **Setup Wizard** window opens.



Click on the **Run Wizard** button.

# 2

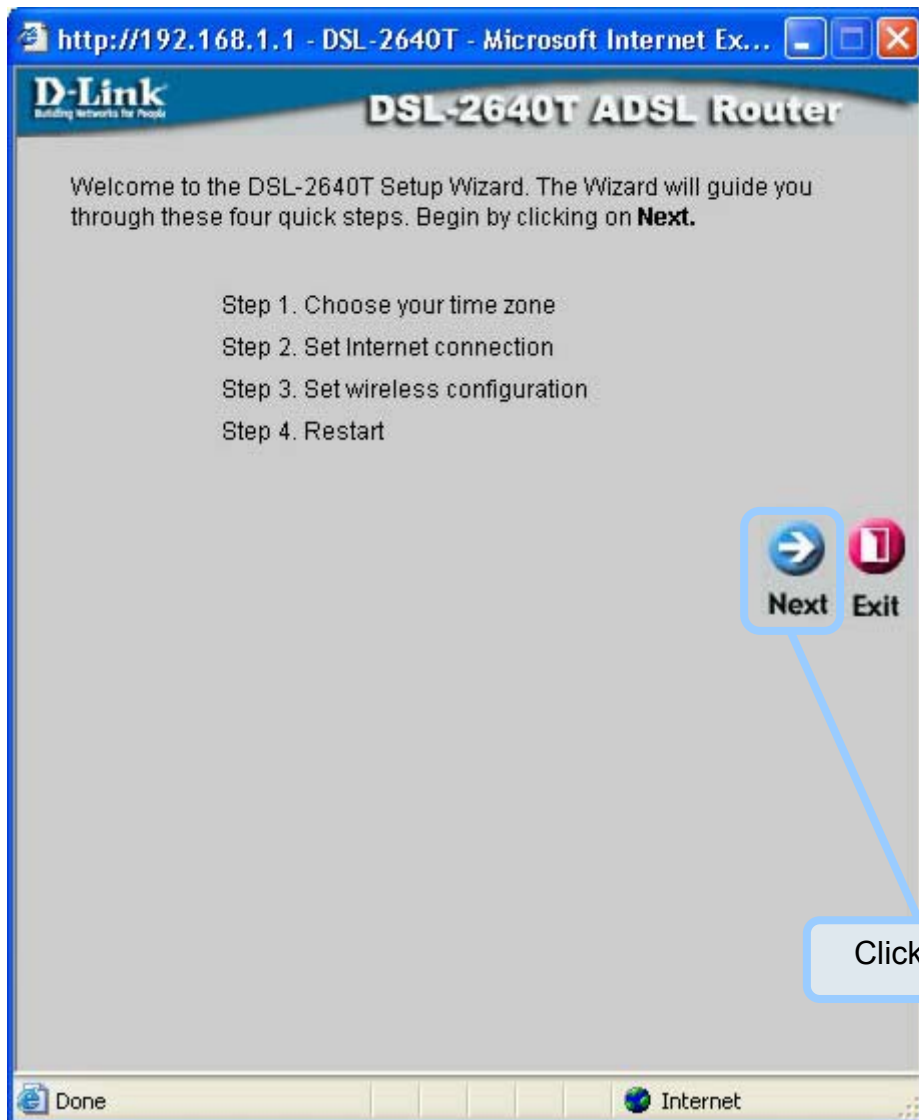
## Configuring the Router (continued)

The Setup Wizard procedure consists of these general steps:

1. Set the time zone
2. Set the Internet connection
3. Set the Wireless configuration
4. Restart the Router

When you setup the Internet connection, you will need to enter information provided by your ISP. If you have not been given information about the connection type, the VPI and VCI numbers, as well as other information related to the connection type, you will not be able to complete the setup.

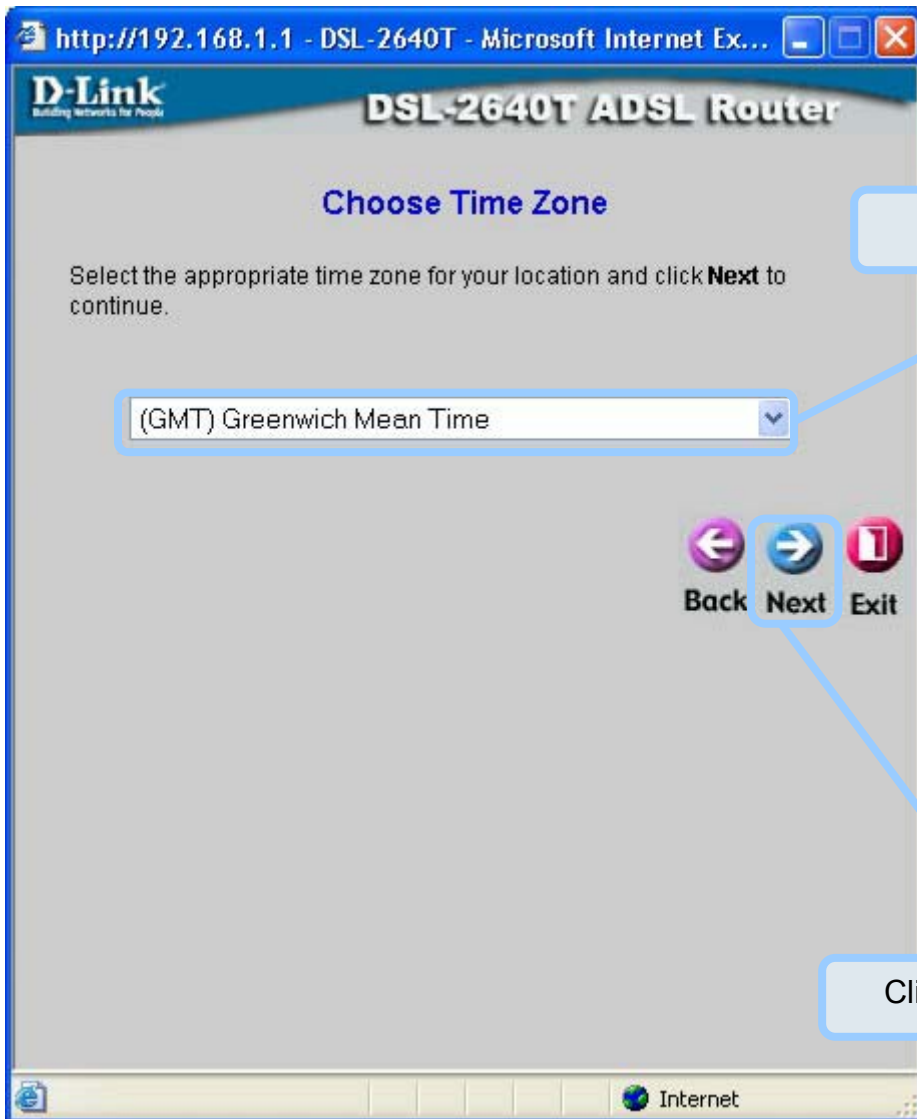
The first Setup Wizard window lists a summary of the steps required to complete the setup. Click the **Next** button to begin setup.



# 2

## Configuring the Router (continued)

The initial step is to configure the **Time Zone** used for the Router's system clock. Select the appropriate time zone for your location. Click the **Next** button when you have made your choice.



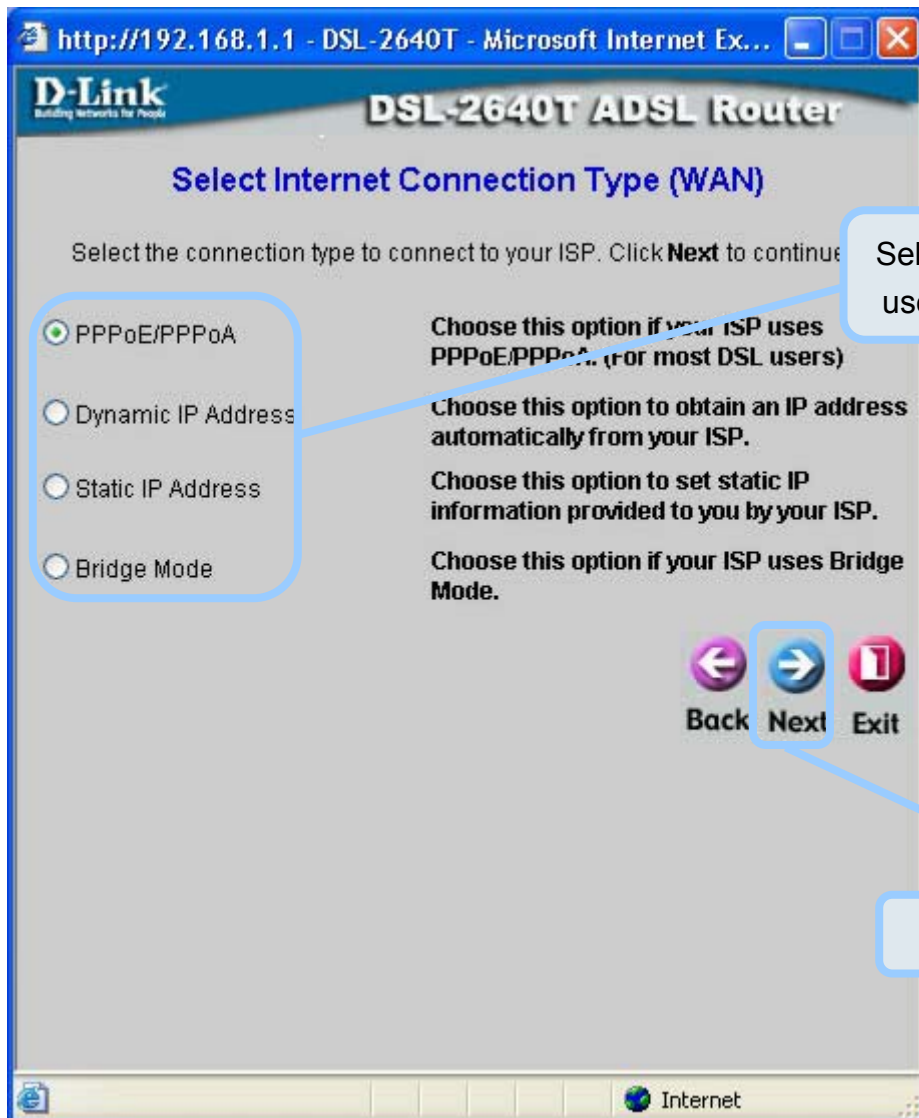
Select the **Time Zone**.

Click the **Next** button.

# 2

## Configuring the Router (continued)

Next you will **Select the Internet Connection Type** for the WAN interface. Your ISP has given this information to you. If you do not know what type of connection to use, exit the Setup Wizard and contact your ISP for the information. The Setup Wizard window that appears when you click the **Next** button depends on what connection type you select. The connection types available in the Setup Wizard window are PPPoE/PPPoA , Dynamic IP Address, Static IP Address, and Bridge Mode. Follow the instructions below for the type of connection you are using.



# 2

## Configuring the Router (continued)

### PPPoE/PPPoA Connections

If you selected the PPPoE/PPPoA connection type in the previous window, you will see the Setup Wizard window pictured here. Type in the **Username** and **Password** used to identify and verify your account to the ISP. If you have been instructed to change the **VPI** number and **VCI** number, type in the new values. Select the **Connection Type** used for encapsulation specific to your service. Click **Next** when you are ready to continue to the Setup Completed window.

Type the **User Name** and **Password** for your ISP account.

Change the **VPI** and **VCI** numbers as instructed by your ISP. Type the new values in the spaces provided here.

Select the **Connection Type** as instructed by your ISP.

Click the **Next** button. Skip ahead to the **Setup Completed** window below.



# 2

## Configuring the Router (continued)

### Dynamic IP Address Connections

If you selected the Dynamic IP Address connection type, select the **Connection Type** used for encapsulation. If you have been instructed to change the **VPI** number and **VCI** number, type in the new values. Click **Next** when you are ready to continue the **Setup Completed** window.

The screenshot shows the 'Set Dynamic IP Address' configuration page in a Microsoft Internet Explorer browser window. The page title is 'DSL-522T ADSL'. Below the title, it says 'Set Dynamic IP Address'. A note explains: 'The Clone MAC Address is used to copy the MAC address of your Ethernet adapter to the DSL-522T. Click Next to continue.' The form contains the following fields and controls:

- VPI: 8
- VCI: 35
- Connection Type: 1483 Bridged IP LLC (dropdown menu)
- Cloned MAC Address: 00:e0:b0:c0:d0:ff
- Clone MAC Address button
- Navigation buttons: Back, Next, Exit

Three callout boxes provide instructions:

- Top callout: 'Change the VPI and VCI numbers as instructed by your ISP. Type the new values in the spaces provided here.' (points to VPI and VCI fields)
- Middle callout: 'Select the Connection Type as instructed by your ISP.' (points to the Connection Type dropdown)
- Bottom callout: 'Click the Next button. Skip ahead to the Setup Completed window below.' (points to the Next button)

Click the **Next** button. Skip ahead to the **Setup Completed** window below.



**Note**

An option for **Dynamic IP Address** connections is to use the MAC address from your computer in place of the Router's actual MAC address for the purpose of Address Resolution by the ISP's DHCP server. To implement this feature click on the **Clone MAC Address** button before continuing to the next window.

# 2

## Configuring the Router (continued)

### Static IP Address Connections

If you selected the Static IP Address connection type, change the **WAN IP Address**, **Subnet Mask**, **ISP Gateway Address**, **Primary DNS (Server IP) Address** and (if available) **Secondary DNS (Server IP) Address** as instructed by your ISP. Select the **Connection Type** used for encapsulation. If you have been instructed to change the **VPI** number and **VCI** number, type in the new values. Click **Next** when you are ready to continue to the **Setup Completed** window.

Change the **VPI** and **VCI** numbers as instructed by your ISP. Type the new values in the spaces provided here.

Type the IP addresses for the **WAN IP Address**, **WAN Subnet Mask**, **ISP Gateway Address**, **Primary DNS Address** and **Secondary DNS Address**.

Select the **Connection Type** as instructed by your ISP.

Click the **Next** button. Skip ahead to the **Setup Completed** window below.

# 2

## Configuring the Router (continued)

### Bridge Connections

If you selected the Bridge connection type, select the **Connection Type** used for encapsulation. If you have been instructed to change the **VPI** number and **VCI** number, type in the new values. Click **Next** when you are ready to continue to the **Setup Completed** window.

Change the **VPI** and **VCI** numbers as instructed by your ISP. Type the new values in the spaces provided here.

Select the **Connection Type** as instructed by your ISP.

Click the **Next** button. Skip ahead to the **Setup Completed** window below.

# 2

## Configuring the Router (continued)

### Wireless LAN Configuration

Configure the **SSID** and **Channel** for the Wireless LAN. You may also configure **WEP** security settings at this time or configure them later using the web manager. Select **None** to configure WEP later. To disable the wireless access point, click the **Enable AP** option box to remove the green check mark.

Enter the **SSID** for the Wireless LAN

Choose the wireless **Channel** to be used for your WLAN from the pull down menu.

Choose the wireless security setup. If **WEP** is used an additional step is required for configuration

Click **Next**

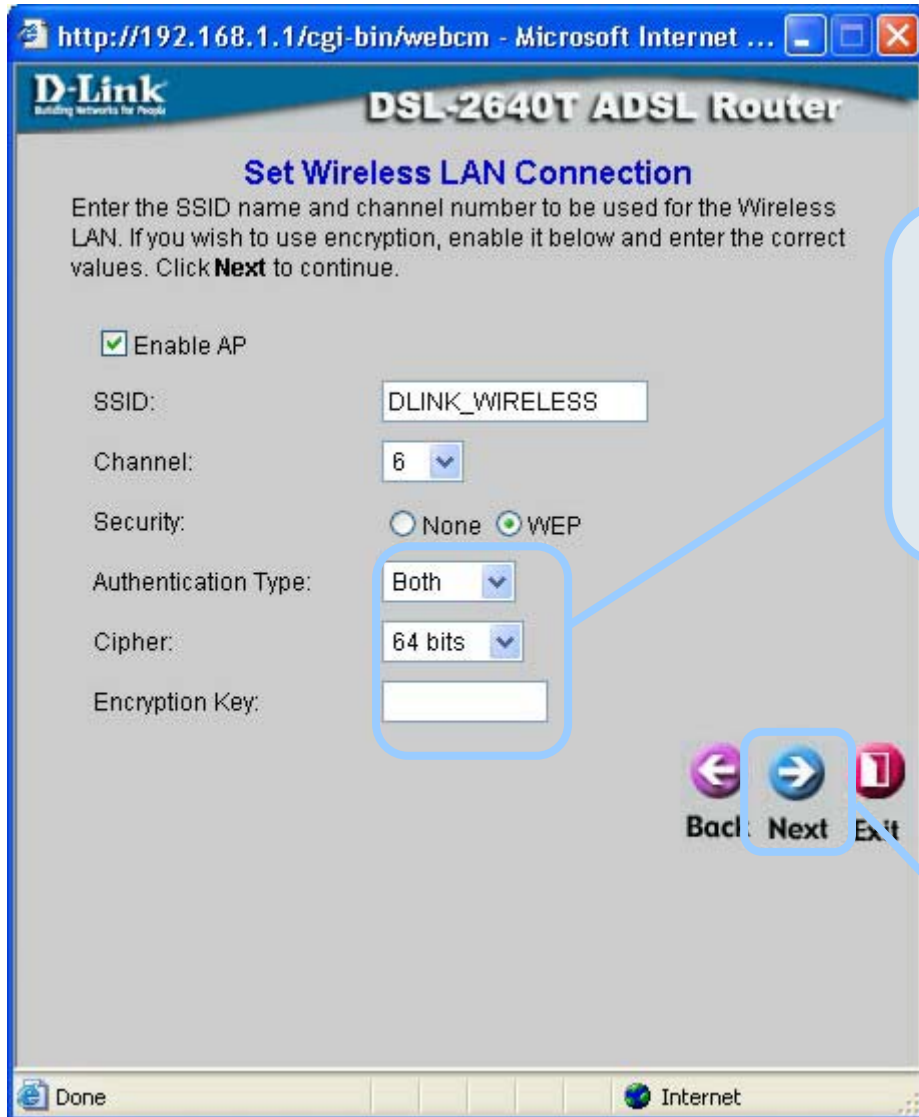
To disable the access point, click to remove the check mark

# 2

## Configuring the Router (continued)

### WEP Configuration

If you are configuring WEP security, select the **Authentication Type**, **Cipher rate** and **Encryption Key**. Click **Next** to continue to the final menu.

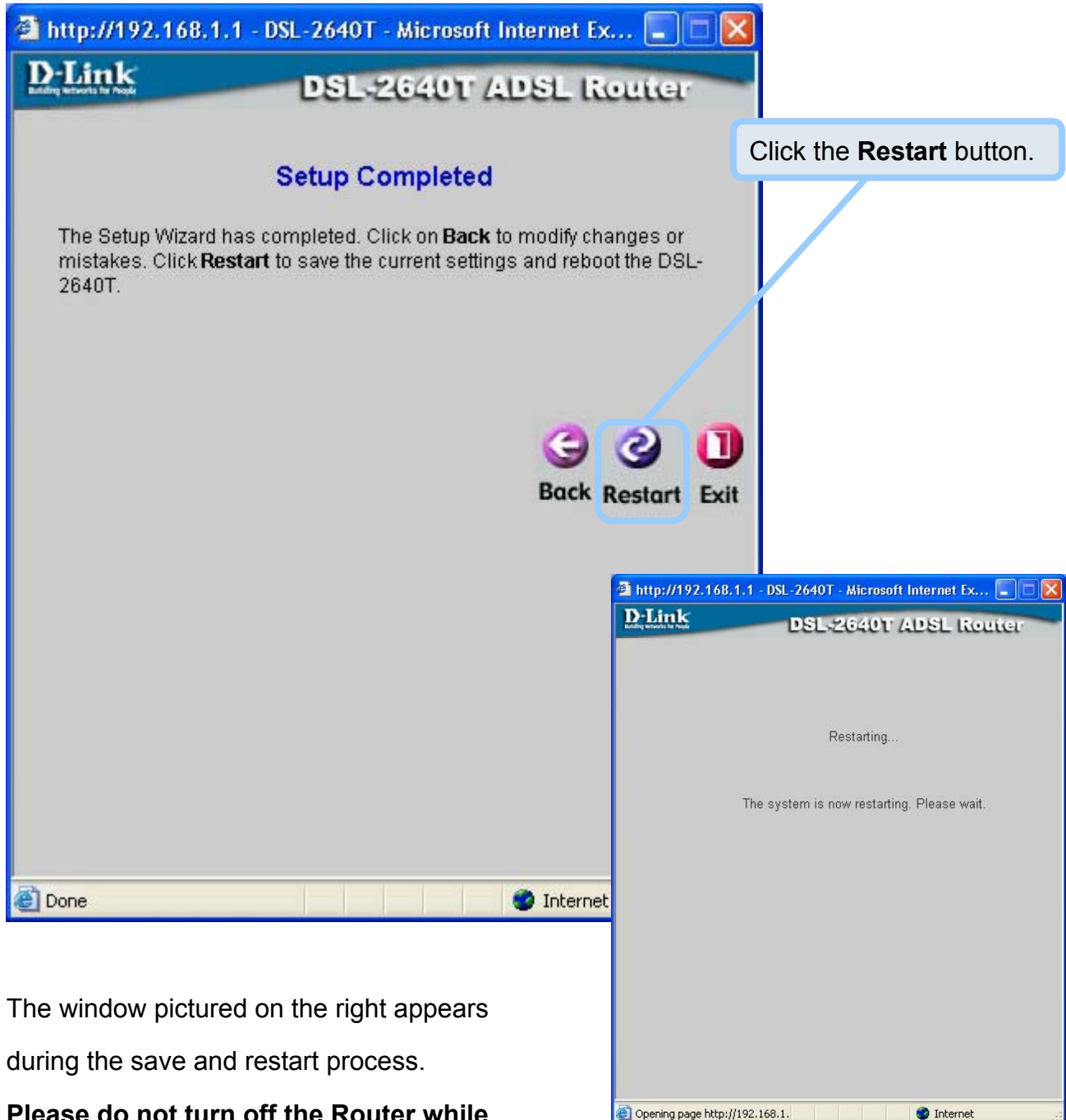


# 2

## Configuring the Router (continued)

### Setup Completed

All the settings for the ADSL connection are now completed. Click the **Restart** button to save the new settings and restart the Router. It will take about two minutes to restart the Router.



The window pictured on the right appears during the save and restart process.

**Please do not turn off the Router while it is still displayed!**

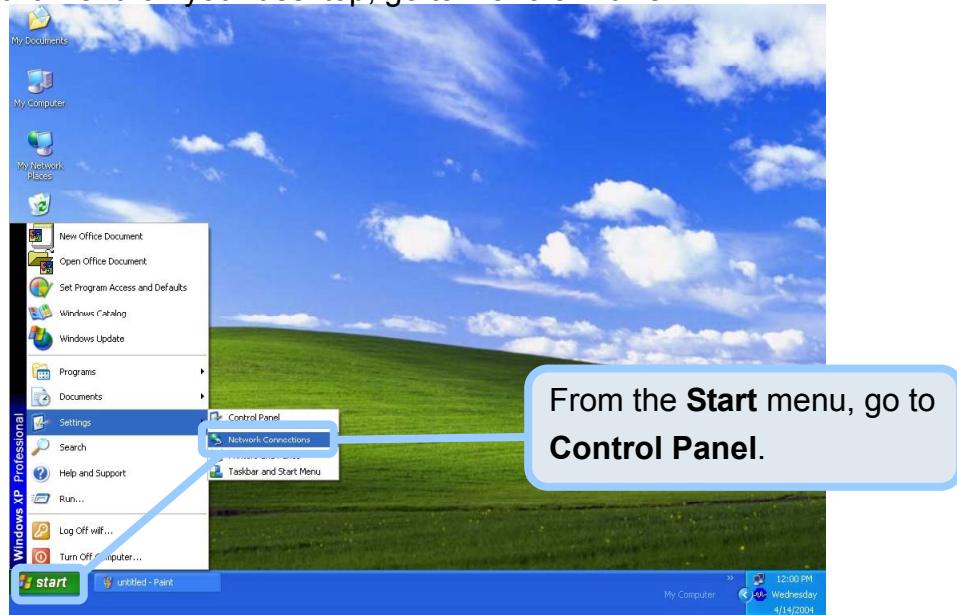
# Appendix

For additional settings or information, refer to the **Advanced**, **Tools**, or **Status** tabs on the Web Management interface; or to the manual located on the CD-ROM.

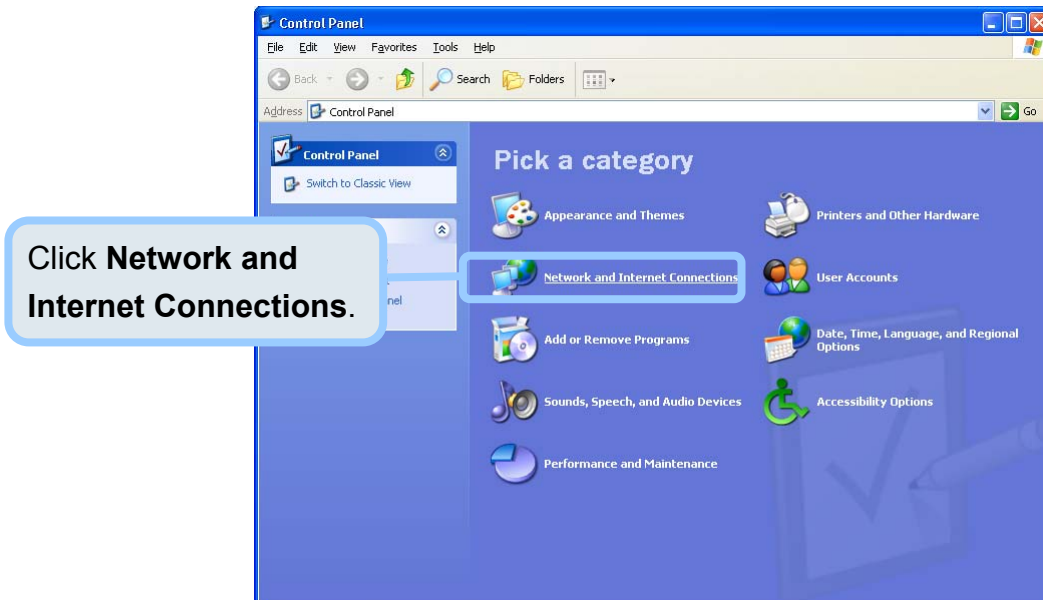
## Configuring IP Settings in Windows XP

Use the following steps to configure a computer running Windows XP to be a DHCP client.

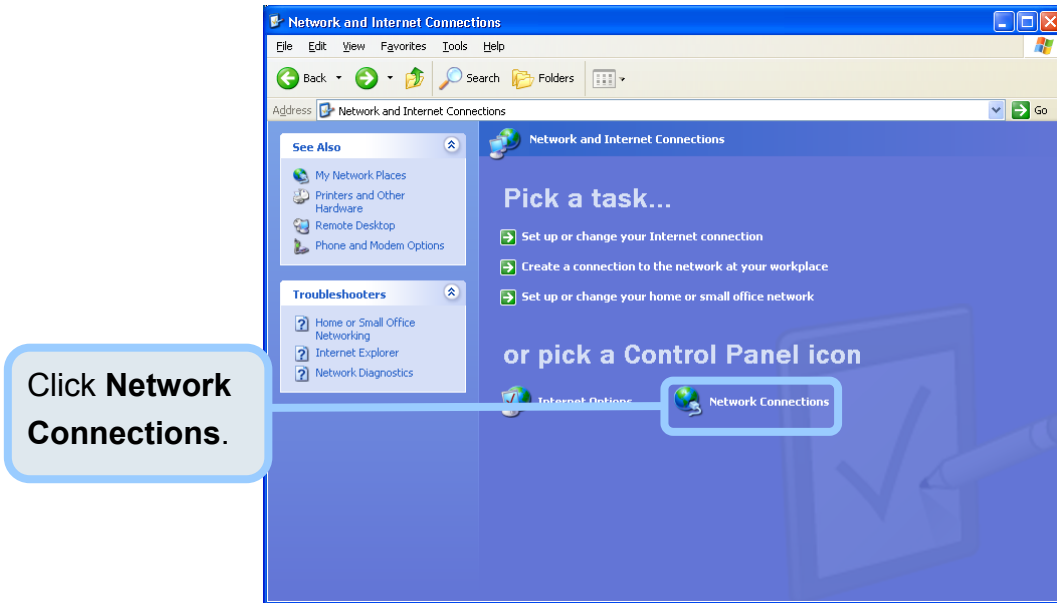
1. From the **Start** menu on your desktop, go to **Control Panel**.



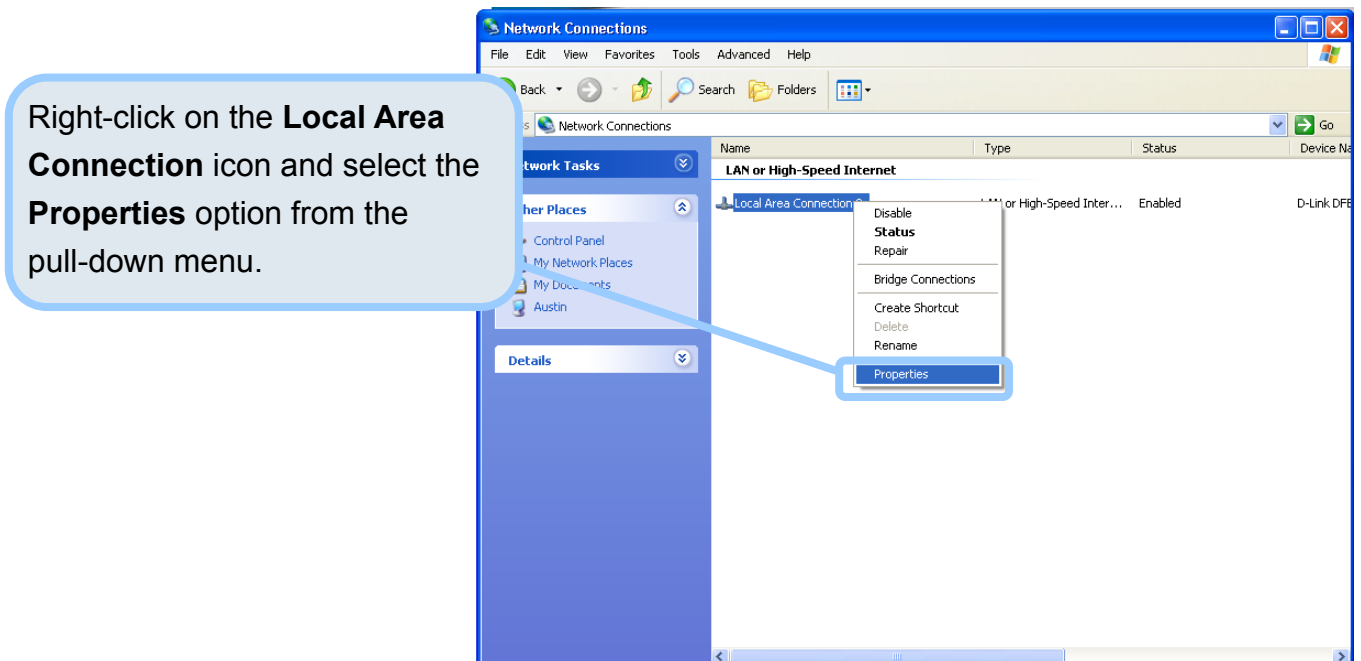
2. In the Control Panel window, click **Network and Internet Connections**.



3. In the Network and Internet Connections window, click **Network Connections**.

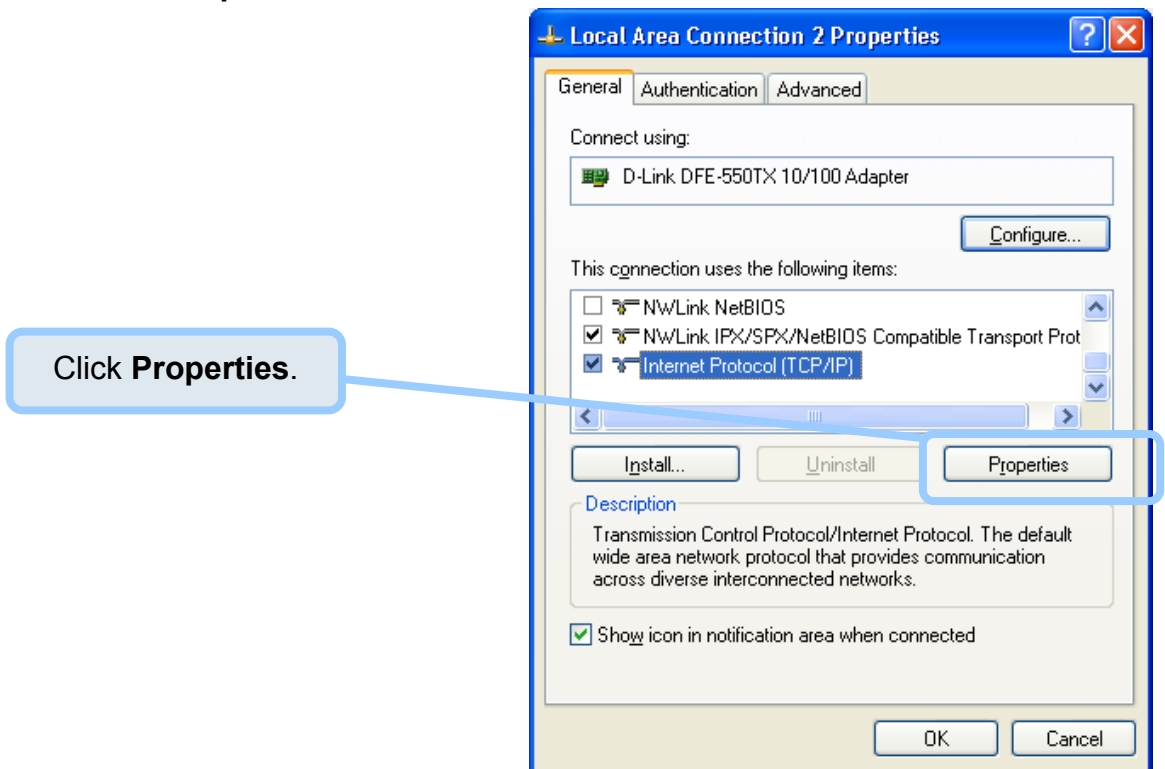


4. In the Network Connections window, right-click on **Local Area Connection**, then click **Properties**.

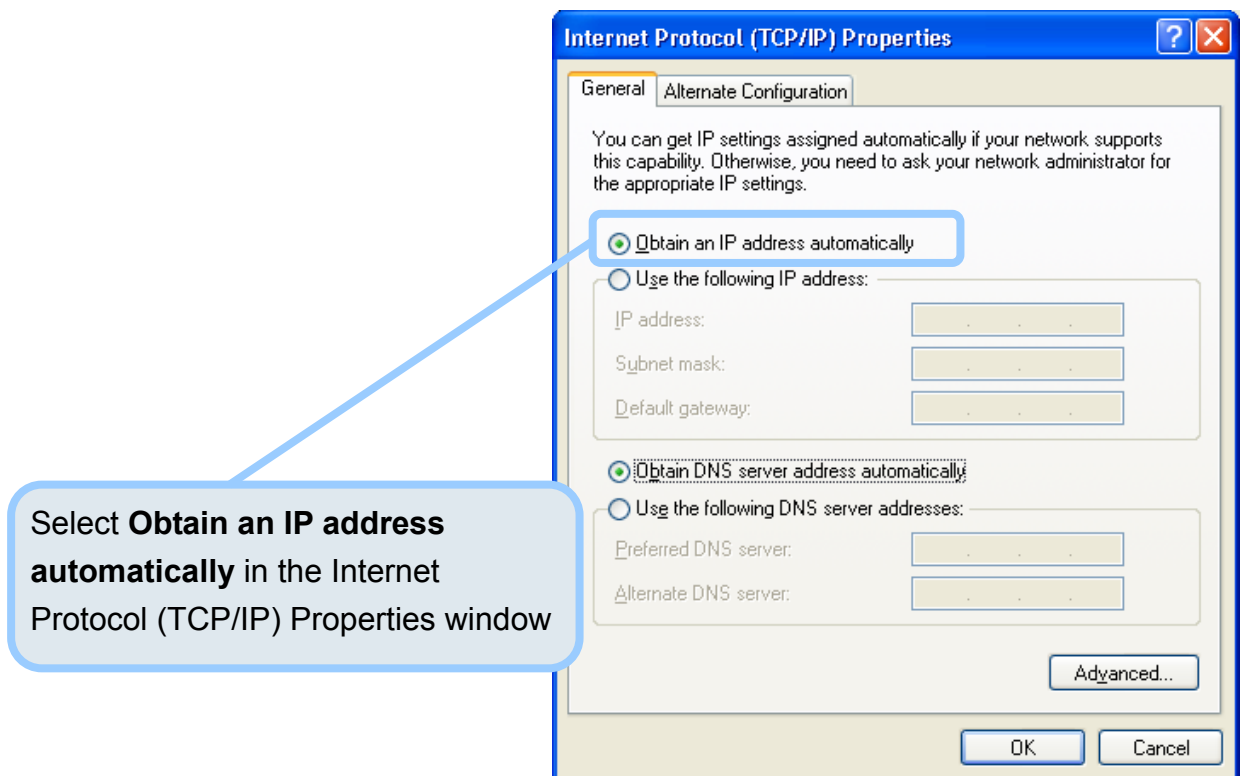




5. In the **General** tab of the **Local Area Connection Properties** window, highlight **Internet Protocol (TCP/IP)** under “This connection uses the following items:” by clicking on it once. Click on the **Properties** button.



6. Select “Obtain an IP address automatically” by clicking once in the circle. Click the **OK** button.



Your computer is now ready to use the Router’s DHCP server.



**D-Link<sup>®</sup>**  
Building Networks for People

## Technische Unterstützung

Aktualisierte Versionen von Software und Benutzerhandbuch finden Sie auf der Website von D-Link.

D-Link bietet kostenfreie technische Unterstützung für Kunden innerhalb Deutschlands, Österreichs, der Schweiz und Osteuropas.

Unsere Kunden können technische Unterstützung über unsere Website, per E-Mail oder telefonisch anfordern.

Web: <http://www.dlink.de>  
E-Mail: [support@dlink.de](mailto:support@dlink.de)  
Telefon: +49 (1805)2787

0,12€/Min aus dem Festnetz der Deutschen Telekom.

Telefonische technische Unterstützung erhalten Sie Montags bis Freitags von 09.00 bis 17.30 Uhr.

Wenn Sie Kunde von D-Link außerhalb Deutschlands, Österreichs, der Schweiz und Osteuropas sind, wenden Sie sich bitte an die zuständige Niederlassung aus der Liste im Benutzerhandbuch.

**D-Link<sup>®</sup>**  
Building Networks for People

## Assistance technique

Vous trouverez la documentation et les logiciels les plus récents sur le site web **D-Link**.

Ceux-ci peuvent contacter le service technique de **D-Link** par notre site internet ou par téléphone.

### Support technique destiné aux clients établis en France:

**Assistance technique D-Link par téléphone :**

0 820 0803 03

**Assistance technique D-Link sur internet :**

<http://www.dlink.fr>

e-mail : [support@dlink.fr](mailto:support@dlink.fr)

### Support technique destiné aux clients établis au Canada :

**Assistance technique D-Link par téléphone :**

(800) 361-5265

Lun.-Ven. 7h30 à 21h00 HNE.

**Assistance technique D-Link sur internet :**

<http://support.dlink.ca>

e-mail : [support@dlink.ca](mailto:support@dlink.ca)

**D-Link**<sup>®</sup>  
Building Networks for People

## Asistencia Técnica

Puede encontrar el software más reciente y documentación para el usuario en el sitio web de **D-Link**. **D-Link** ofrece asistencia técnica gratuita para clientes dentro de España durante el periodo de garantía del producto. Los clientes españoles pueden ponerse en contacto con la asistencia técnica de **D-Link** a través de nuestro sitio web o por teléfono.

### **Asistencia Técnica de D-Link por teléfono:**

**902 304545**

de lunes a viernes desde las 9:00 hasta las 14:00 y de las 15:00 hasta las 18:00

### **Asistencia Técnica de D-Link a través de Internet:**

<http://www.dlink.es>  
email: [soporte@dlink.es](mailto:soporte@dlink.es)

**D-Link**<sup>®</sup>  
Building Networks for People

## Supporto tecnico

Gli ultimi aggiornamenti e la documentazione sono disponibili sul sito D-Link.

Supporto tecnico per i clienti residenti in Italia

**D-Link Mediterraneo S.r.L.**

Via N. Bonnet 6/B 20154 Milano

Supporto Tecnico dal lunedì al venerdì dalle ore  
9.00 alle ore 19.00 con orario continuato

Telefono: 02-39607160

URL : <http://www.dlink.it/supporto.html>

Email: [tech@dlink.it](mailto:tech@dlink.it)

**D-Link<sup>®</sup>**  
Building Networks for People

## Technical Support

You can find software updates and user documentation on the D-Link website.

D-Link provides free technical support for customers within Benelux for the duration of the warranty period on this product.

Benelux customers can contact D-Link technical support through our website, or by phone.

### **Tech Support for customers within the Netherlands:**

***D-Link Technical Support over the Telephone:***

0900 501 2007

Monday to Friday 8:00 am to 10:00 pm

***D-Link Technical Support over the Internet:***

[www.dlink.nl](http://www.dlink.nl)

### **Tech Support for customers within Belgium:**

***D-Link Technical Support over the Telephone:***

+32(0)2 717 3248

Monday to Friday 8:00 am to 10:00 pm

***D-Link Technical Support over the Internet:***

[www.dlink.be](http://www.dlink.be)

**D-Link<sup>®</sup>**  
Building Networks for People

## Pomoc techniczna

Najnowsze wersje oprogramowania i dokumentacji użytkownika można znaleźć w serwisie internetowym firmy D-Link.

D-Link zapewnia bezpłatną pomoc techniczną klientom w Polsce w okresie gwarancyjnym produktu.

Klienci z Polski mogą się kontaktować z działem pomocy technicznej firmy D-Link za pośrednictwem Internetu lub telefonicznie.

### **Telefoniczna pomoc techniczna firmy D-Link:**

+49 (1805)-2787

### **Pomoc techniczna firmy D-Link świadczona przez Internet:**

URL: <http://www.dlink.pl>

e-mail: [pomoc\\_techiczna@dlink.de](mailto:pomoc_techiczna@dlink.de)

**D-Link<sup>®</sup>**  
Building Networks for People



## Technická podpora

Aktualizované verze software a uživatelských příruček najdete na webových stránkách firmy D-Link.

D-Link poskytuje svým zákazníkům bezplatnou technickou podporu

Zákazníci mohou kontaktovat oddělení technické podpory přes webové stránky, mailem nebo telefonicky

Web: <http://www.dlink.de>

E-Mail: [support@dlink.de](mailto:support@dlink.de)

Telefon: +49 (1805)-2787

Telefonická podpora je v provozu:

PO-ČT od 08.00 do 19.00

PÁ od 08.00 do 17.00

## Technikai Támogatás

Meghajtó programokat és frissítéseket a **D-Link** Magyarország weblapjáról tölthet le.

Telefonon technikai segítséget munkanapokon hétfőtől-csütörtökig 9.00 – 16.00 óráig és pénteken 9.00 – 14.00 óráig kérhet a **(1) 461-3001** telefonszámon vagy a **support@dlink.hu** emailcímen.

Magyarországi technikai támogatás :

### D-Link Magyarország

1074 Budapest, Alsóerdősor u. 6. – R70 Irodaház 1 em.

**D-Link<sup>®</sup>**  
Building Networks for People

## Teknisk Support

Du kan finne programvare oppdateringer og bruker dokumentasjon på D-Links web sider.

D-Link tilbyr sine kunder gratis teknisk support under produktets garantitid.

Kunder kan kontakte D-Links teknisk support via våre hjemmesider, eller på tlf.

### Teknisk Support:

#### **D-Link Teknisk telefon Support:**

800 10 610

(Hverdager 08:00-20:00)

#### **D-Link Teknisk Support over Internett:**

<http://www.dlink.no>

**D-Link<sup>®</sup>**  
Building Networks for People

## Teknisk Support

Du finder software opdateringer og bruger-dokumentation på D-Link's hjemmeside.

D-Link tilbyder gratis teknisk support til kunder i Danmark i hele produktets garantiperiode.

Danske kunder kan kontakte D-Link's tekniske support via vores hjemmeside eller telefonisk.

D-Link teknisk support over telefonen:

**Tlf. 7026 9040**

Åbningstider: kl. 08:00 – 20:00

**D-Link teknisk support på Internettet:**

<http://www.dlink.dk>

**D-Link<sup>®</sup>**  
**Building Networks for People**

## Teknistä tukea asiakkaille

### Suomessa:

D-Link tarjoaa teknistä tukea asiakkailleen.  
Tuotteen takuun voimassaoloajan.  
Tekninen tuki palvelee seuraavasti:

Arkisin klo. 9 - 21

numerosta

**0800-114 677**

Internetin kautta

Ajurit ja lisätietoja tuotteista.

<http://www.dlink.fi>

Sähköpostin kautta

voit myös tehdä kyselyitä.

**D-Link<sup>®</sup>**  
Building Networks for People

## Teknisk Support

På vår hemsida kan du hitta mer information om mjukvaru uppdateringar och annan användarinformation.

D-Link tillhandahåller teknisk support till kunder i Sverige under hela garantitiden för denna produkt.

### Teknisk Support för kunder i Sverige:

#### D-Link Teknisk Support via telefon:

**0770-33 00 35**

Vardagar 08.00-20.00

#### D-Link Teknisk Support via Internet:

<http://www.dlink.se>

**D-Link<sup>®</sup>**  
Building Networks for People

(15.21)

**Warning: Changes or modifications to this unit not expressly approved by the party responsible for compliance could void the user authority to operate the equipment.**

**15.19 (a)(3)**

This device complies with Part 15 of the FCC Rules. Operation is subject to the following two conditions: (1) this device may not cause harmful interference, and (2) this device must accept any interference received, including interference that may cause undesired operation.

The users manual or instruction manual for an intentional or unintentional radiator shall caution the user that changes or modifications not expressly approved by the party responsible for compliance could void the user's authority to operate the equipment.



**CAUTION:**

**To comply with FCC RF exposure compliance requirements, a separation distance of at least 20 cm must be maintained between the antenna of this device and all persons.**

**Repair Center:** For FCC Part 68 、 Part15 in USA/美國當地代表

**Company Name:** D-Link corp.

**Tel:** (714) 885-6000

**Contact Person:** Michael Hsu /Title: P.Manager

**Email:** [mhsu@dlink.com](mailto:mhsu@dlink.com)

**Address:** 17595 Mt. Herrmann Street Fountain Valley, CA 92708 U.S.A