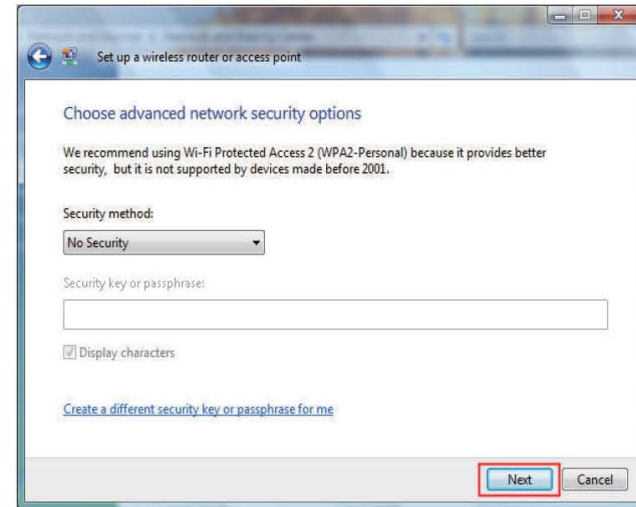
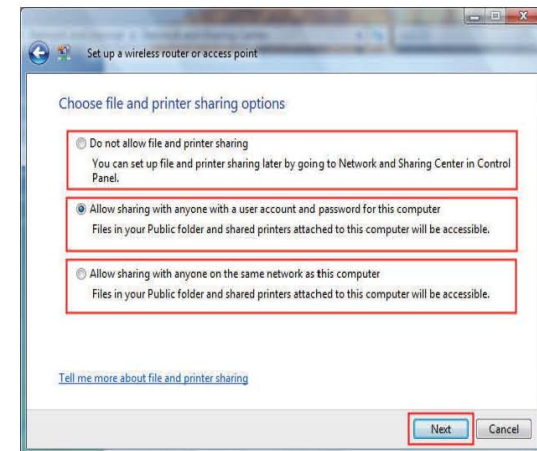


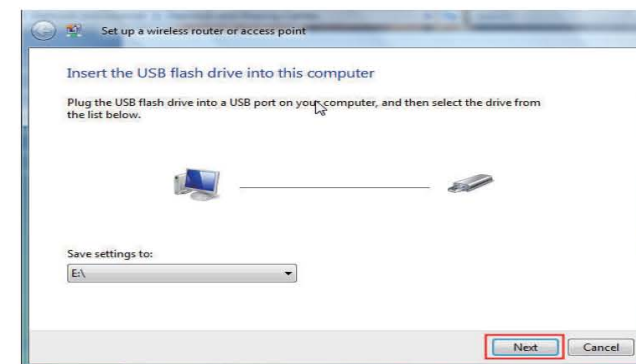
9. Once you have selected the desired security method on the **Choose advanced network security options** window in the **Set up a wireless router or access point wizard**, click the **Next** button.



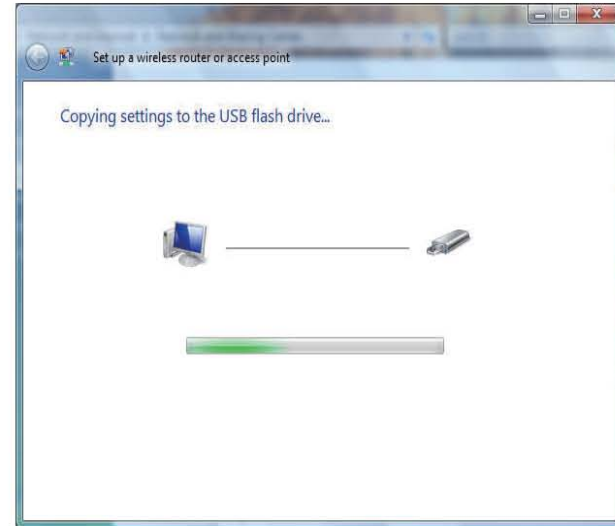
10. Select the desired file and printer sharing option on the **Choose file and printer sharing options** window in the **Set up a wireless router or access point wizard**. Click the **Next** button.



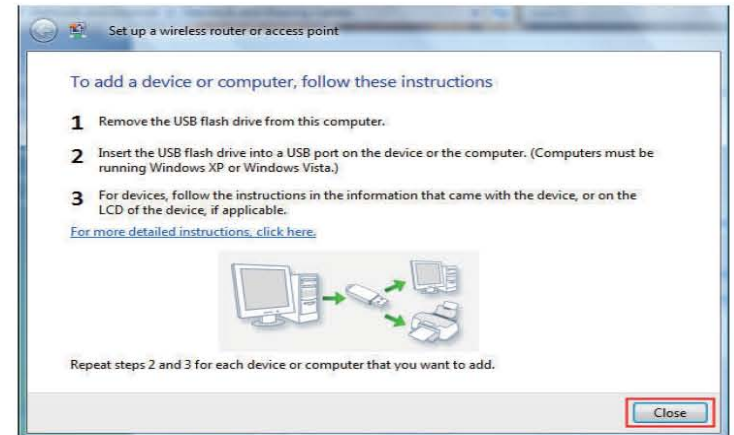
11. Once you have saved your network settings to USB, use the pull-down menu on the **Insert the USB flash drive into this computer** window in the **Set up a wireless router or access point wizard** to select a destination for your network settings. Click the **Next** button.



12. Once you have saved your network settings to USB, the **Copying settings to the USB drive** window in the **Set up a wireless router or access point wizard** opens to indicate the system progress.



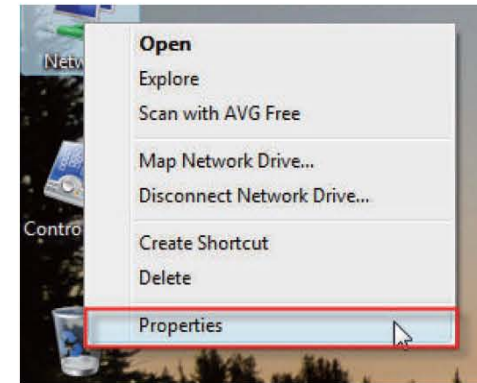
13. Once you are finished, the **To add a device or computer, follow these instructions** window in the **Set up a wireless router or access point wizard** opens. When you are finished, click the **Close** button.



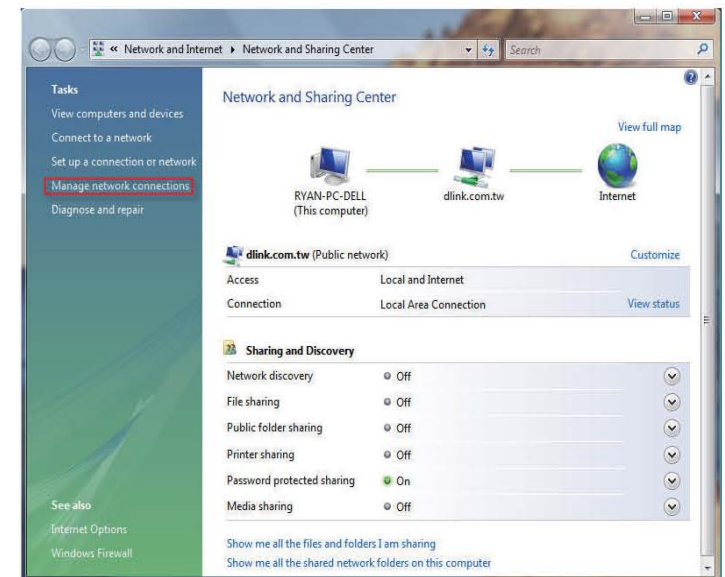
# Connecting to a Secured Wireless Network (WEP, WPA-PSK & WPA2-PSK)

The following are step-by-step directions to set up a wireless connection.

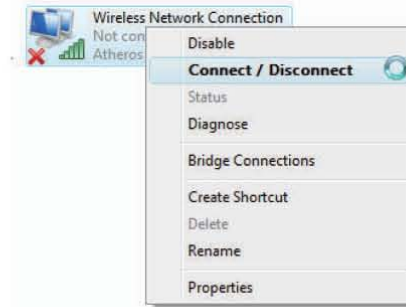
1. Click on **Properties**.



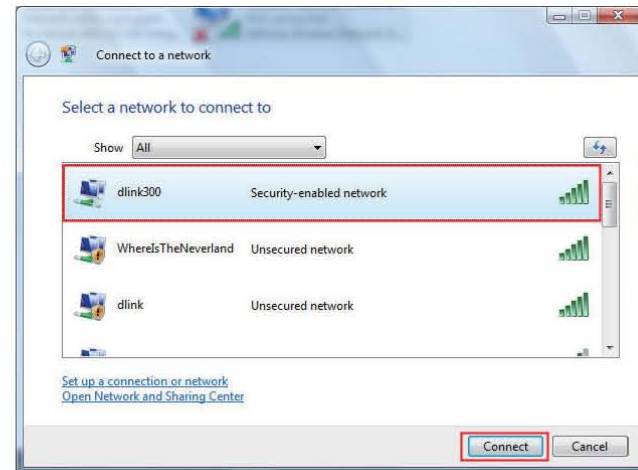
2. Click the **Manage network connections** link in the **Network and Sharing Center** window.



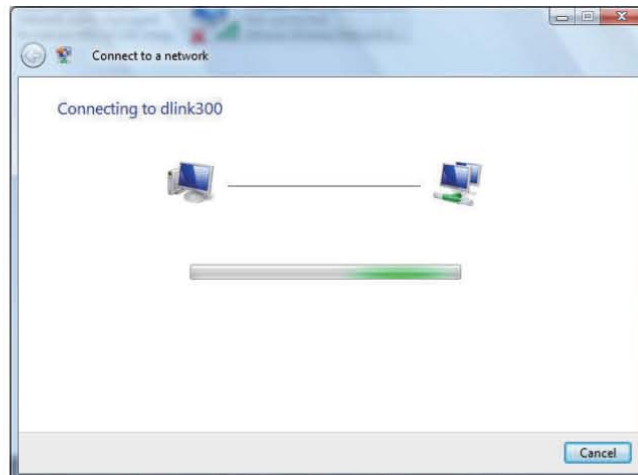
3. Right-click the **Wireless Network Connection** entry and then select **Connect/Disconnect** from the drop-down menu.



4. Select a network to connect to in the **Select a network to connect to** window in the **Connect to a network** wizard and then click the **Connect** button.



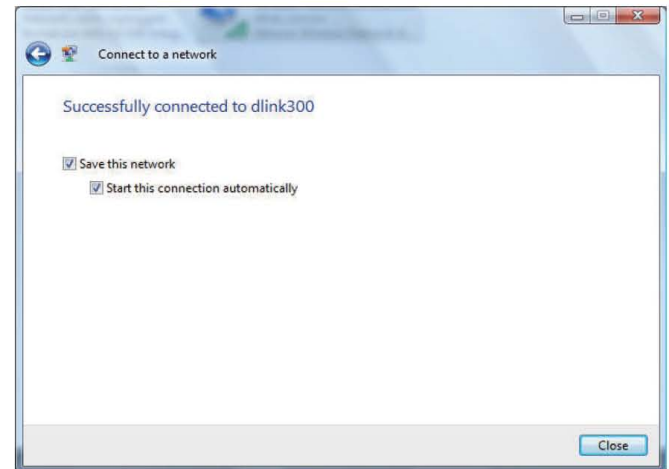
5. The following **Connect to a network** wizard window displays the system progress.



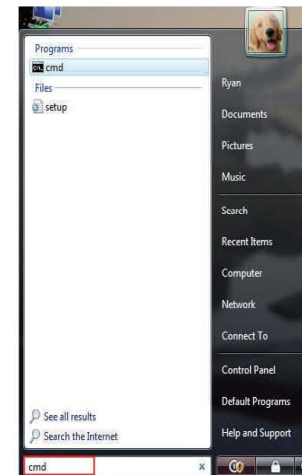
6. Enter the network security key or passphrase for the Router in the textbox provided in the **Type the network security key or passphrase for dlink300** window in the **Connect a network** wizard. When you are finished, click the **Connect** button.



7. The following **Successfully connected to dlink300** window in the **Connect to a network** wizard is displayed. Choose to save to the network and/or start the new connection automatically. When you are finished, click the **Close** button.



8. The successful connection is displayed at the bottom of the Windows start up menu.



9. Confirm your new settings by calling up the command prompt and then entering the ipconfig command.

```
Microsoft Windows [Version 6.0.6000]
Copyright (c) 2006 Microsoft Corporation. All rights reserved.

C:\Users\Ryan>ipconfig

Windows IP Configuration

Wireless LAN adapter Wireless Network Connection:

    Connection-specific DNS Suffix . . . : dlink.com.tw
    Link-local IPv6 Address . . . . . : fe80::edf2:c78:90
    IPv4 Address. . . . . : 192.168.0.103
    Subnet Mask . . . . . : 255.255.255.0
    Default Gateway . . . . . : 192.168.0.1

Ethernet adapter Local Area Connection:

    Media State . . . . . : Media disconnected
    Connection-specific DNS Suffix . . : dlink.com.tw

Tunnel adapter Local Area Connection* 6:

    Connection-specific DNS Suffix . . :
    IPv6 Address. . . . . : 2001:0:4136:e38a:
```

10. To test the new IP address, use the Ping feature of the command prompt.

```
C:\Windows\system32\cmd.exe - ping 192.168.0.1 -t

C:\Users\Ryan>ping 192.168.0.1 -t

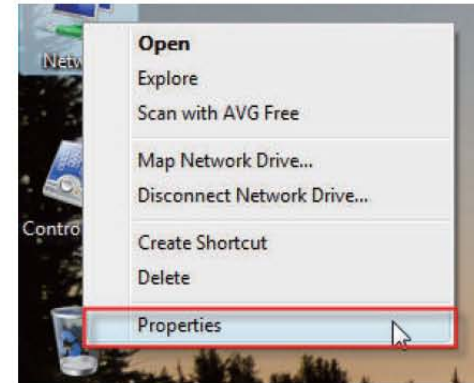
Pinging 192.168.0.1 with 32 bytes of data:

Reply from 192.168.0.1: bytes=32 time=3ms TTL=64
Reply from 192.168.0.1: bytes=32 time=2ms TTL=64
Reply from 192.168.0.1: bytes=32 time=2ms TTL=64
Reply from 192.168.0.1: bytes=32 time=1ms TTL=64
Reply from 192.168.0.1: bytes=32 time=5ms TTL=64
```

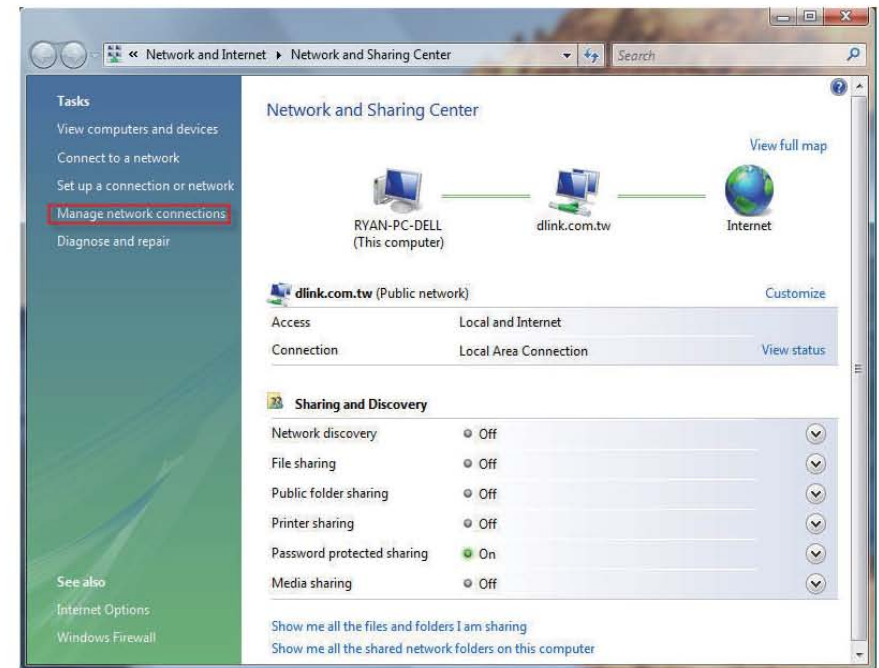
# Connecting to an Unsecured Wireless Network

The following are step-by-step directions to set up an unsecured wireless connection.

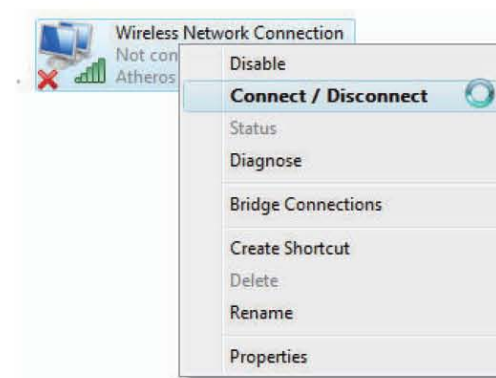
1. Click on Properties.



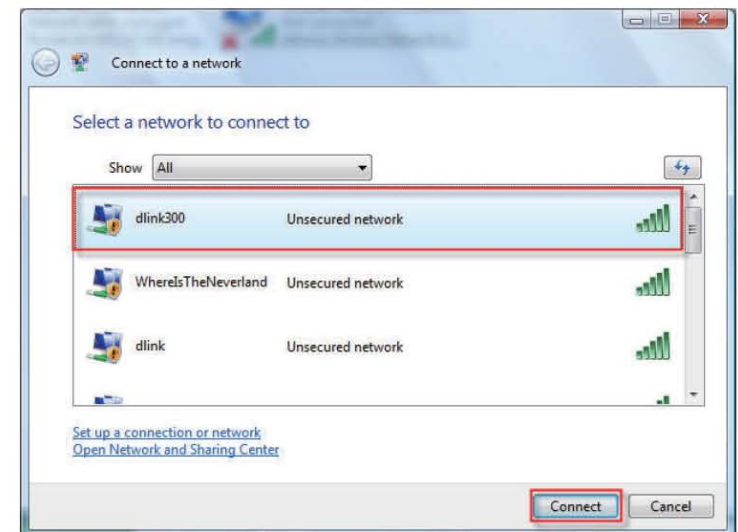
2. Go to the Network and Sharing Center window and click the Manage Network Connections link.



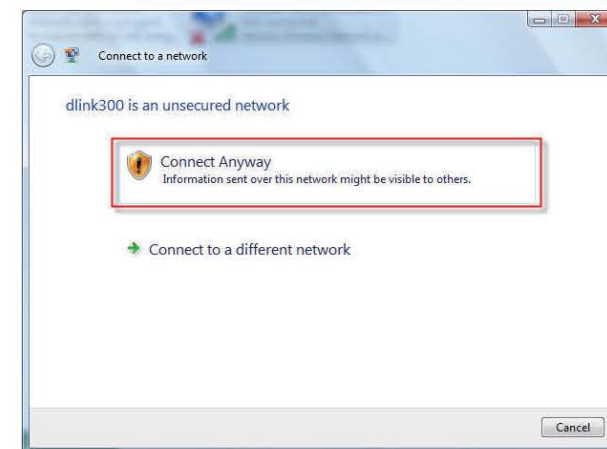
3. Right-click the **Wireless Network Connection** entry and then select **Connect/Disconnect** from the drop-down menu.



4. Select a network to connect to in the **Select a network to connect to** window in the **Connect to a network** wizard and then click the **Connect** button.

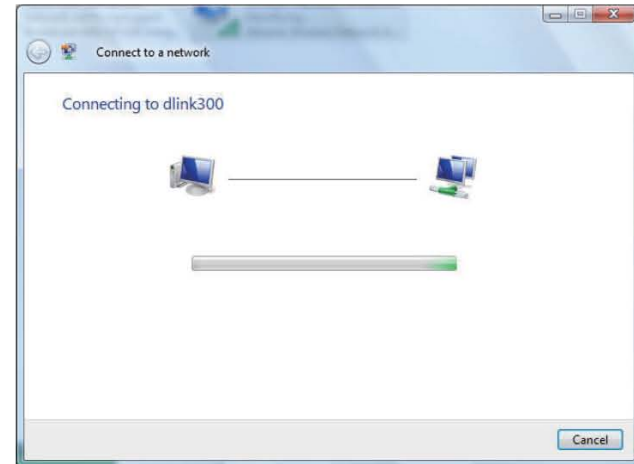


5. Confirm your desire to connect anyway on the following **Network Connection Status** window.

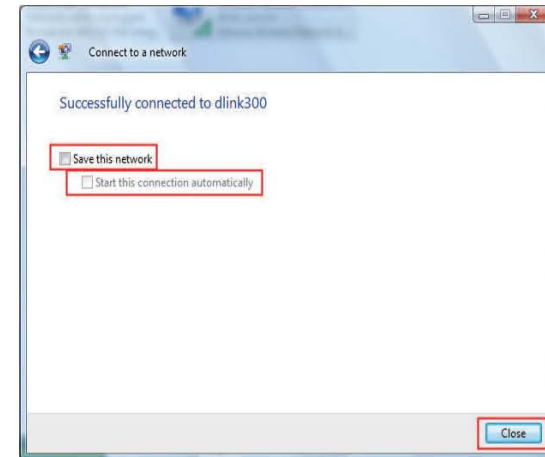




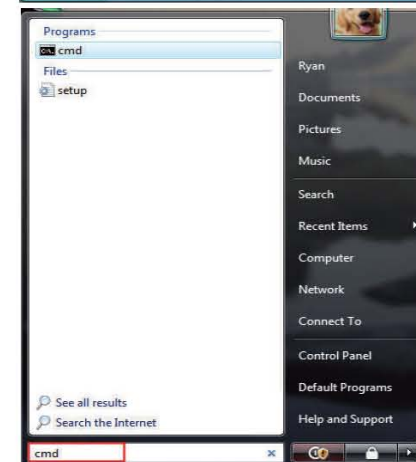
6. The following **Connect to a network** wizard window displays the system progress.



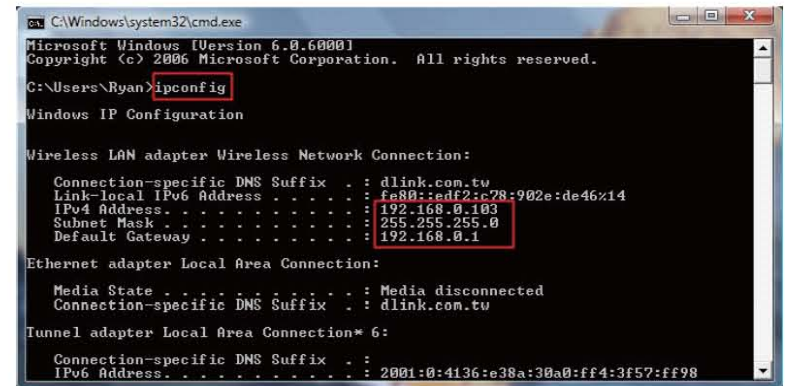
7. The following **Successfully connected to dlink300** window in the **Connect to a network** wizard is displayed. Choose to save to the network and/or start the new connection automatically. When you are finished, click the **Close** button.



8. The successful connection is displayed at the bottom of the Windows start up menu.



9. Confirm your new settings by calling up the command prompt and then entering the ipconfig command.



```
C:\Windows\system32\cmd.exe
Microsoft Windows [Version 6.0.6000]
Copyright (c) 2006 Microsoft Corporation. All rights reserved.

C:\Users\Ryan>ipconfig

Windows IP Configuration

Wireless LAN adapter Wireless Network Connection:

    Connection-specific DNS Suffix  . : dlink.com.tw
    Link-local IPv6 Address . . . . . : fe80::edf2:c28:902e:de46x14
    IPv4 Address. . . . . : 192.168.0.103
    Subnet Mask . . . . . : 255.255.255.0
    Default Gateway . . . . . : 192.168.0.1

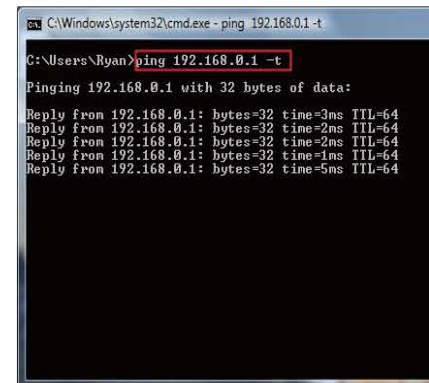
Ethernet adapter Local Area Connection:

    Media State . . . . . : Media disconnected
    Connection-specific DNS Suffix  . : dlink.com.tw

Tunnel adapter Local Area Connection* 6:

    Connection-specific DNS Suffix  . :
    IPv6 Address. . . . . : 2001:0:4136:e30a:30a0:ff4:3f57:ff98
```

10. To test the new IP address, use the Ping feature of the command prompt.



```
C:\Windows\system32\cmd.exe - ping 192.168.0.1 -t

C:\Users\Ryan>ping 192.168.0.1 -t

Pinging 192.168.0.1 with 32 bytes of data:

Reply from 192.168.0.1: bytes=32 time=3ms TTL=64
Reply from 192.168.0.1: bytes=32 time=2ms TTL=64
Reply from 192.168.0.1: bytes=32 time=2ms TTL=64
Reply from 192.168.0.1: bytes=32 time=1ms TTL=64
Reply from 192.168.0.1: bytes=32 time=5ms TTL=64
```

# Troubleshooting

This chapter provides solutions to problems that can occur during the installation and operation of the DIR-605L. Read the following descriptions if you are having problems. (The examples below are illustrated in Windows® XP. If you have a different operating system, the screenshots on your computer will look similar to the following examples.)

## 1. Why can't I access the web-based configuration utility?

When entering the IP address of the D-Link router (192.168.0.1 for example), you are not connecting to a website on the Internet or have to be connected to the Internet. The device has the utility built-in to a ROM chip in the device itself. Your computer must be on the same IP subnet to connect to the web-based utility.

- Make sure you have an updated Java-enabled web browser. We recommend the following:
  - Internet Explorer 6.0 or higher
  - Netscape 8 or higher
  - Mozilla 1.7.12 (5.0) or higher
  - Opera 8.5 or higher
  - Safari 1.2 or higher (with Java 1.3.1 or higher)
  - Camino 0.8.4 or higher
  - Firefox 1.5 or higher
- Verify physical connectivity by checking for solid link lights on the device. If you do not get a solid link light, try using a different cable or connect to a different port on the device if possible. If the computer is turned off, the link light may not be on.
- Disable any internet security software running on the computer. Software firewalls such as Zone Alarm, Black Ice, Sygate, Norton Personal Firewall, and Windows® XP firewall may block access to the configuration pages. Check the help files included with your firewall software for more information on disabling or configuring it.

- Configure your Internet settings:

- Go to **Start > Settings > Control Panel**. Double-click the **Internet Options** icon. From the **Security** tab, click the button to restore the settings to their defaults.
  - Click the **Connection** tab and set the dial-up option to Never Dial a Connection. Click the **LAN Settings** button. Make sure nothing is checked. Click **OK**.
  - Go to the **Advanced** tab and click the button to restore these settings to their defaults. Click **OK** three times.
  - Close your web browser (if open) and open it.
- Access the web management. Open your web browser and enter the IP address of your D-Link router in the address bar. This should open the login page for your the web management.
  - If you still cannot access the configuration, unplug the power to the router for 10 seconds and plug back in. Wait about 30 seconds and try accessing the configuration. If you have multiple computers, try connecting using a different computer.

## 2. What can I do if I forgot my password?

If you forgot your password, you must reset your router. Unfortunately this process will change all your settings back to the factory defaults.

To reset the router, locate the reset button (hole) on the rear panel of the unit. With the router powered on, use a paperclip to hold the button down for 10 seconds. Release the button and the router will go through its reboot process. Wait about 30 seconds to access the router. The default IP address is 192.168.0.1. When logging in, the username is **admin** and leave the password box empty.

### 3. Why can't I connect to certain sites or send and receive emails when connecting through my router?

If you are having a problem sending or receiving email, or connecting to secure sites such as eBay, banking sites, and Hotmail, we suggest lowering the MTU in increments of ten (Ex. 1492, 1482, 1472, etc).

**Note: AOL DSL+ users must use MTU of 1400.**

To find the proper MTU Size, you'll have to do a special ping of the destination you're trying to go to. A destination could be another computer, or a URL.

- Click on **Start** and then click **Run**.
- Windows® 95, 98, and Me users type in **command** (Windows® NT, 2000, and XP users type in **cmd**) and press **Enter** (or click **OK**).
- Once the window opens, you'll need to do a special ping. Use the following syntax:

**ping [url] [-f] [-l] [MTU value]**

Example: **ping yahoo.com -f -l 1472**

```
C:\>ping yahoo.com -f -l 1482
Pinging yahoo.com [66.94.234.13] with 1482 bytes of data:
Packet needs to be fragmented but DF set.
Packet needs to be fragmented but DF set.
Packet needs to be fragmented but DF set.
Packet needs to be fragmented but DF set.

Ping statistics for 66.94.234.13:
    Packets: Sent = 4, Received = 0, Lost = 4 (100% loss),
    Approximate round trip times in milli-seconds:
        Minimum = 0ms, Maximum = 0ms, Average = 0ms

C:\>ping yahoo.com -f -l 1472
Pinging yahoo.com [66.94.234.13] with 1472 bytes of data:
Reply from 66.94.234.13: bytes=1472 time=93ms TTL=52
Reply from 66.94.234.13: bytes=1472 time=109ms TTL=52
Reply from 66.94.234.13: bytes=1472 time=125ms TTL=52
Reply from 66.94.234.13: bytes=1472 time=203ms TTL=52

Ping statistics for 66.94.234.13:
    Packets: Sent = 4, Received = 4, Lost = 0 (0% loss),
    Approximate round trip times in milli-seconds:
        Minimum = 93ms, Maximum = 203ms, Average = 132ms

C:\>
```

You should start at 1472 and work your way down by 10 each time. Once you get a reply, go up by 2 until you get a fragmented packet. Take that value and add 28 to the value to account for the various TCP/IP headers. For example, let's say that 1452 was the proper value, the actual MTU size would be 1480, which is the optimum for the network we're working with ( $1452+28=1480$ ).

Once you find your MTU, you can now configure your router with the proper MTU size.

To change the MTU rate on your router follow the steps below:

- Open your browser, enter the IP address of your router (192.168.0.1) and click **OK**.
- Enter your username (admin) and password (blank by default). Click **OK** to enter the web configuration page for the device.
- Click on **Setup** and then click **Manual Configure**.
- To change the MTU enter the number in the MTU field and click the **Save Settings** button to save your settings.
- Test your email. If changing the MTU does not resolve the problem, continue changing the MTU in increments of ten.

# Wireless Basics

D-Link wireless products are based on industry standards to provide easy-to-use and compatible high-speed wireless connectivity within your home, business or public access wireless networks. Strictly adhering to the IEEE standard, the D-Link wireless family of products will allow you to securely access the data you want, when and where you want it. You will be able to enjoy the freedom that wireless networking delivers.

A wireless local area network (WLAN) is a cellular computer network that transmits and receives data with radio signals instead of wires. Wireless LANs are used increasingly in both home and office environments, and public areas such as airports, coffee shops and universities. Innovative ways to utilize WLAN technology are helping people to work and communicate more efficiently. Increased mobility and the absence of cabling and other fixed infrastructure have proven to be beneficial for many users.

Wireless users can use the same applications they use on a wired network. Wireless adapter cards used on laptop and desktop systems support the same protocols as Ethernet adapter cards.

Under many circumstances, it may be desirable for mobile network devices to link to a conventional Ethernet LAN in order to use servers, printers or an Internet connection supplied through the wired LAN. A Wireless Router is a device used to provide this link.