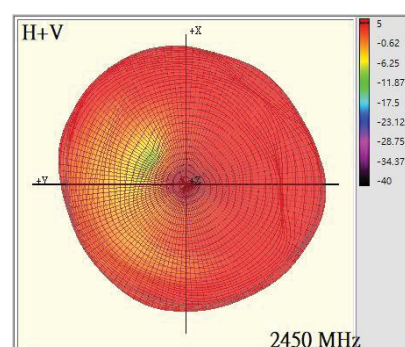
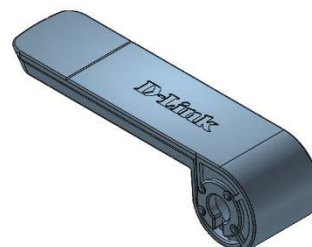


## Features

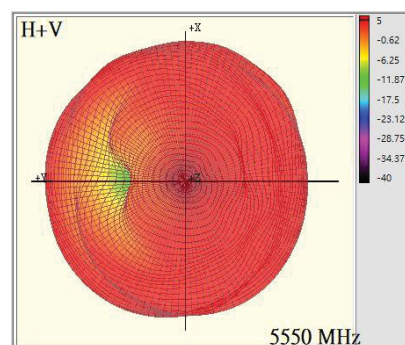
- Dual band IEEE 802.11 a/b/g/n/ac/ax standard
- Case mounting or on board mount
- High efficiency
- Quick integration

## Specification(Preliminary)

Frequency (MHz)	2400 ~ 2500	5150 ~ 5825
Peak Gain (dBi)	3.1	3.3
VSWR	2.0:1	2.0:1
Power (Watts)	1	1
Impedance (Ohms)	50	50
Dimension (mm)	43.6 x 10 x 0.8	
Connector	MHF compatible	
Operating Temp (°C)	-40°C ~ +85°C	



2.45GHz



5GHz

## Mechanical Dimensions

