

FCC SAR

TEST REPORT

of

USB MODEM

Model Name: DWM- 162
Trade Name: D Link Corporation
Report No.: SZ10020039S01
FCC ID: KA2DWM162

prepared for

D-link Corporation

#36 North Third Ring East Road, World Trade Center, Block B Room 26F02-O5.
Dongcheng District, Beijing, China

prepared by
Shenzhen Electronic Product Quality Testing Center
Morlab Laboratory
3/F, Electronic Testing Building, Shann Road, Xili,
Nanshan District, Shenzhen, 518057 P. R. China
Tel: +86 755 86130398
Fax: +86 755 86130218



NOTE: This test report can be duplicated completely for the legal use with the approval of the applicant, it shall not be reproduced except in full, without the written approval of Shenzhen Electronic Product Quality Testing Center Morlab Laboratory. Any objections should be raised to us within thirty workdays since the date of issue.

Contents

1.1. Notes	3
1.2. Organization item.....	3
1.3. Conclusion.....	3
2. TESTING LABORATORY.....	4
2.1. Identification of the Responsible Testing Laboratory.....	4
2.2. Identification of the Responsible Testing Location	4
2.3. Accreditation Certificate	4
2.4. List of Test Equipments	4
3. TECHNICAL INFORMATION	5
3.1. Identification of Applicant.....	5
3.2. Identification of Manufacturer	5
3.3. Equipment Under Test (EUT)	5
3.3.2. Identification of all used EUTs	6
4. TEST RESULTS.....	6
4.1. Applied Reference Documents	6
4.2. Test Environment/Conditions	7
4.3. Operational Conditions During Test	8
4.3.1. Informations On The Testing	8
4.3.2. The Measurement System	10
4.3.3. Uncertainty Assessment	12
4.3.4. Equipments and results of validation testing.....	13
4.3.5. Dielectric Performance	13
4.3.6. Simulant liquids.....	14
4.4. MEASUREMENT PROCEDURES	15
4.4.1. Procedures Used To Establish Test Signal.....	15
4.5. Items used in the Test Results List.....	17
4.6. Test Results List.....	18
ANNEX A ACCREDITATION CERTIFICATE.....	20
ANNEX B PHOTOGRAPHS OF THE EUT	21
ANNEX C GRAPH TEST RESULTS	23

General Information

1.1. Notes




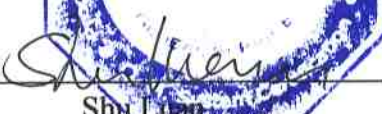
The test results of this test report relate exclusively to the information specified in section 3.3. Shenzhen Electronic Product Quality Testing Center Morlab Laboratory does not assume responsibility for any conclusions and generalizations drawn from the test results with regard to other specimens or samples of the type of the equipment represented by the identification. The test report may only be reproduced or published in full. Reproduction or publications of extracts from the test report requires the prior written approval of Shenzhen Electronic Product Quality Testing Center Morlab Laboratory. The test report shall be invalid without all the signatures of testing the Project Manager, the Deputy Project Manager and the Test Lab Manager. Any objections must be raised to Morlab within 30 days since the date when the report is received. It will not be taken into consideration beyond this limit.

1.2. Organization item

Report No.:	SZ10020039S01
Date of Issue:	Mar 8, 2009
Date of Tests:	Feb 24, 2009 –Feb 24, 2009
Responsible for Accreditation:	Shu Luan
Project Manager:	Li Lei
Deputy Project Manager:	Chen Chao

1.3. Conclusion

Shenzhen Electronic Product Quality Testing Center Morlab Laboratory has verified that all tests as listed in the section 4.6 of this report haven been performed successfully with the tested equipment.

 Chen Chao Tested by (Responsible for the Test Report)		 Li Lei Reviewed by (Verification of the Test Report)
 Shu Luan Approved by (Responsible Test Lab Manager)		

2. Testing Laboratory

2.1. Identification of the Responsible Testing Laboratory

Company Name: Shenzhen Electronic Product Quality Testing Center
Department: Morlab Laboratory
Address: 3/F, Electronic Testing Building, Shahe Road, Nanshan District, Shenzhen, 518055 P. R. China
Responsible Test Lab Manager: Mr. Shu Luan
Telephone: +86 755 86130268
Facsimile: +86 755 86130218

2.2. Identification of the Responsible Testing Location

Name: Shenzhen Electronic Product Quality Testing Center Morlab Laboratory
Address: 3/F, Electronic Testing Building, Shahe Road, Nanshan District, Shenzhen, 518055 P. R. China

2.3. Accreditation Certificate

Accredited Testing Laboratory: No. CNAS L1659 (see 0)

2.4. List of Test Equipments

No.	Instrument	Type
1	PC	Dell (Pentium IV 2.4GHz, SN:X10-23533)
2	Network Emulator	Rohde&Schwarz (CMU200, SN:105894)
3	Voltmeter	Keithley (2000, SN:1000572)
4	Synthesizer	Rohde&Schwarz (SML_03, SN:101868)
5	Amplifier	Nucl udes (ALB216, SN:10800)
6	Power Meter	Rohde&Schwarz (NRVD, SN:101066)
7	Probe	Antennessa (SN:SN_3708_EP80)
8	Phantom	Antennessa (SN:SN_36_08_SAM62)
9	Liquid	Antennessa (Last Calibration:21 08 04)

3. Technical Information

Note: the following data is based on the information by the applicant.

3.1. Identification of Applicant

Company Name: D-Link Corporation

Address: #36 North Third Ring East Road, World Trade Center, Block B Room
26F02-O5, Dongcheng District, Beijing, China

3.2. Identification of Manufacturer

Company Name: AsiaTelco Technologies Co.

Address: 3F, Building 8, #289 Bisheng Road, Zhangjiang Hi Tech Park,
Pudongm Shanghai China

3.3. Equipment Under Test (EUT)

Brand Name: D Link Corporation

Type Name: D Link Corporation

Marking Name: DWM- 162

Hardware Version: 325-0091-001-2

Software Version: V1.0.3.6

Frequency Bands: CDMA 800MHz (channel 1013:824.70MHz,
channel 384:836.50MHz, Channel 848.30MHz)

Modulation Mode: CDMA

Antenna type: CDMA 1X, EVDO Rev. A

3.3.1. Photographs of the EUT

Please see for photographs of the EUT.

3.3.2. Identification of all used EUTs

The EUT Identity consists of numerical and letter characters (see the table below), the first five numerical characters indicates the Type of the EUT defined by Morlab, the next letter character indicates the test sample, and the following two numerical characters indicates the software version of the test sample.

EUT Identity	Hardware Version	Software Version
1#	325-0091-001-2	V1.0.3.6

NOTE:

1. The EUT is an EVDO Rev. A embedded Modem support CDMA1X and EVDO. It can be used as a wireless module.
2. The transmitter (Tx) frequency arrangement of the Band Class 0 used by the EUT can be represented with the formula $F(n) = 0.030 \cdot (n - 1023) + 825.000$, $991 \leq n \leq 1023$ and $F(n) = 0.030 \cdot n + 825.000$, $1 \leq n \leq 799$; the lowest, middle, highest channel numbers (ARFCHs) used and tested in this report are separately 1013 (824.7MHz), 384 (836.52MHz) and 777 (848.31MHz).

4. Test Results

4.1. Applied Reference Documents

Leading reference documents for testing:

No.	Identity	Document Title
1	47 CFR § 2.1093	Radiofrequency Radiation Exposure Evaluation: Portable Devices
2	FCC OET Bulletin 65 (Edition 97-01), Supplement C (Edition 01-01)	Evaluating Compliance with FCC Guidelines for Human Exposure to Radiofrequency Electromagnetic Fields
3	ANSI C95.1-1999	IEEE Standard for Safety Levels with Respect to Human Exposure to Radio Frequency Electromagnetic Fields, 3kHz to 300 GHz
4	IEEE 1528-2003	Recommended Practice for Determining the Peak Spatial-Average Specific Absorption Rate(SAR) in the Human Body Due to Wireless Communications Devices: Experimental Techniques.

4.2. Test Environment/Conditions

Normal Temperature (NT):	20 ... 25 °C
Relative Humidity:	30 ... 75 %
Air Pressure:	980 ... 1020 hPa
Details of Power Supply:	220V/50Hz AC
Extreme Temperature:	Low Temperature (LT) = -10°C
	High Temperature (HT) = 55°C
Extreme Voltage of the EUT:	Normal Voltage (NV) = 3.70V
	Low Voltage (LV) = 3.60V
	High Voltage (HV) = 4.20V
Test frequency:	CDMA 800MHz
Operation mode:	Call established
Power Level:	Maximum output power

During SAR test, EUT is in Traffic Mode (Channel Allocated) at Normal Voltage Condition. A communication link is set up with a System Simulator (SS) by air link, and a call is established.

The Absolute Radio Frequency Channel Number (ARFCN) 1013, 384 and 777 respectively in the case of CDMA 800MHz, The EUT is commanded to operate at maximum transmitting power.

The EUT shall use its internal transmitter. The antenna(s), battery and accessories shall be those specified by the manufacturer. The EUT battery must be fully charged and checked periodically during the test to ascertain uniform power output. If a wireless link is used, the antenna connected to the output of the base station simulator shall be placed at least 50 cm away from the handset.

The signal transmitted by the simulator to the antenna feeding point shall be lower than the output power level of the handset by at least 35 dB.

4.3.Operational Conditions During Test

4.3.1. Informations On The Testing

I. INFORMATIONS ON THE TESTING

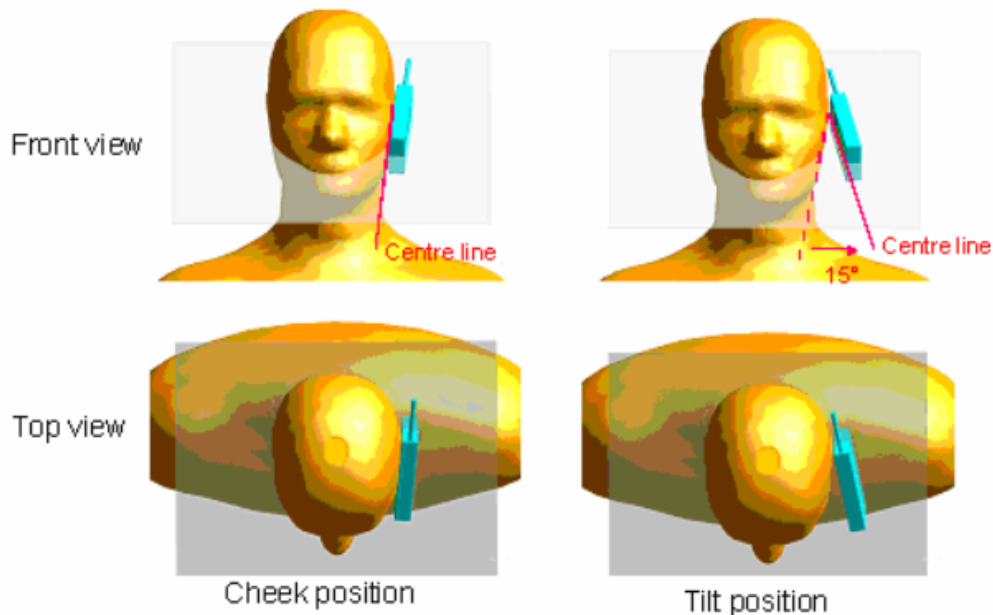
I.1. Normative reference

IEEE 1528: Recommended Practice for determining the Peak Spatial-Average Specific Absorption Rate (SAR) in the Human Head from Wireless Communications Devices: Measurement Techniques. Institute of Electrical and Electronics Engineers, INC., 2003.

I.3. Positions and test conditions of the mobile phone under test

The mobile phone antenna and battery are those specified by the manufacturer. The battery is fully charged before each measurement. The output power and frequency are controlled using a base station simulator. The mobile phone is set to transmit at its highest output peak power level.

The mobile phone is test in the “cheek” and “tilted” positions on the left and right sides of the phantom. The mobile phone is placed with the vertical centre line of the body of the mobile phone and the horizontal line crossing the centre of the earpiece in a plane parallel to the sagittal plane of the phantom.



Description of the « cheek » position:

The mobile phone is well placed in the reference plane and the earpiece is in contact with the ear. Then the mobile phone is moved until any point on the front side get in contact with the cheek of the phantom or until contact with the ear is lost.

Description of the « tilted » position:

The mobile phone is well place in the “cheek” position as described above. Then the mobile phone is moved outward away from the mouth by an angle of 15 degrees or until contact with the ear lost.

4.3.2. The Measurement System

Comosar is a system that is able to determine the SAR distribution inside a phantom of human being according to different standards. The Comosar system consists of the following items:

- Main computer to control all the system
- 6 axis robot
- Data acquisition system
- Miniature E-field probe
- Phone holder
- Head simulating tissue

The following figure shows the system.



COMOSAR bench

The mobile phone under test operating at the maximum power level is placed in the phone holder, under the phantom, which is filled with head simulating liquid. The E-Field probe measures the electric field inside the phantom. The OpenSAR software computes the results to give a SAR value in a 1g or 10 g mass.

II.1. Phantom

For the measurements the Specific Anthropomorphic Mannequin (SAM) defined by the IEEE SCC-34/SC2 group is used. The phantom is a polyurethane shell integrated in a wooden table. The thickness of the phantom amounts to 2 mm +/- 0,2 mm. It enables the dosimetric evaluation of left and right hand phone usage and includes an additional flat phantom part for the simplified performance check. The phantom set-up includes a cover, which prevents the evaporation of the liquid.

II.2. Probe

For the measurements the Specific Dosimetric E-Field Probe SSE5 with following specifications is used.

- Dynamic range: 0.01-100 W/kg
- Tip Diameter : 5 mm

- Distance between probe tip and sensor center : 2.5 mm
- Distance between sensor center and the inner phantom surface: 4 mm (repeatability better than +/- 1mm).
- Probe linearity : <0.25 dB
- Axial Isotropy : <0.25 dB
- Spherical Isotropy : <0.50 dB
- Calibration range : 835 to 2500 MHz for head & body simulating liquid
- Angle between probe axis (evaluation axis) and surface normal line : less than 30°

II.3. Measurement procedure

The following steps are used for each test position

- Establish a call with the maximum output power with a base station simulator. The connection between the mobile and the base station simulator is established via air interface
- Measurement of the local E-field value at a fixed location. This value serves as a reference value for calculating a possible power drift.
- Measurement of the SAR distribution with a grid of 8 to 16 mm * 8 to 16 mm and a constant distance to the inner surface of the phantom. Since the sensors can not directly measure at the inner phantom surface, the values between the sensors and the inner phantom surface are extrapolated. With these values the area of the maximum SAR is calculated by an interpolation scheme.
- Around this point, a cube of 30 * 30 * 30 mm or 32 * 32 * 32 mm is assessed by measuring 5 or 8 * 5 or 8 * 4 or 5 mm. With these data, the peak spatial-average SAR value can be calculated.

II.4 Description of interpolation/extrapolation scheme

The local SAR inside the phantom is measured using small dipole sensing elements inside a probe body. The probe tip must not be in contact with the phantom surface in order to minimise measurements errors, but the highest local SAR will occur at the surface of the phantom.

An extrapolation is using to determinate this highest local SAR values. The extrapolation is based on a fourth-order least-square polynomial fit of measured data. The local SAR value is then extrapolated from the liquid surface with a 1 mm step.

The measurements have to be performed over a limited time (due to the duration of the battery) so the step of measurement is high. It could vary between 5 and 8 mm. To obtain an accurate assessment of the maximum SAR averaged over 10 grams and 1 gram requires a very fine resolution in the three dimensional scanned data array.

4.3.3. Uncertainty Assessment

The following table includes the uncertainty table of the IEEE 1528.

The values are determined by Antennessa.

a	b	c	d	e= f(d,k)	f	g	h= c*f/e	i= c*g/e	k
Uncertainty Component	Sec.	Tol (+- %)	Prob. Dist.	Div.	Ci (1g)	Ci (10g)	1g Ui (+-%)	10g Ui (+-%)	Vi
Measurement System									
Probe calibration	E.2.1	7.0	N	1	1	1	7.00	7.00	∞
Axial Isotropy	E.2.2	2.5	R	$\sqrt{3}$	$(1-C_p)^{1/2}$	$(1-C_p)^{1/2}$	1.02	1.02	∞
Hemispherical Isotropy	E.2.2	4.0	R	$\sqrt{3}$	$\sqrt{C_n}$	$\sqrt{C_n}$	1.63	1.63	∞
Boundary effect	E.2.3	1.0	R	$\sqrt{3}$	1	1	0.58	0.58	∞
Linearity	E.2.4	5.0	R	$\sqrt{3}$	1	1	2.89	2.89	∞
System detection limits	E.2.5	1.0	R	$\sqrt{3}$	1	1	0.58	0.58	∞
Readout Electronics	E.2.6	0.02	N	1	1	1	0.02	0.02	∞
Reponse Time	E.2.7	3.0	R	$\sqrt{3}$	1	1	1.73	1.73	∞
Integration Time	E.2.8	2.0	R	$\sqrt{3}$	1	1	1.15	1.15	∞
RF ambient Conditions	E.6.1	3.0	R	$\sqrt{3}$	1	1	1.73	1.73	∞
Probe positioner Mechanical Tolerance	E.6.2	2.0	R	$\sqrt{3}$	1	1	1.15	1.15	∞
Probe positioning with respect to Phantom Shell	E.6.3	0.05	R	$\sqrt{3}$	1	1	0.03	0.03	∞
Extrapolation, interpolation and integration Algorithms for Max. SAR Evaluation	E.5.2	5.0	R	$\sqrt{3}$	1	1	2.89	2.89	∞
Test sample Related									
Test sample positioning	E.4.2.1	0.03	N	1	1	1	0.03	0.03	N-1
Device Holder Uncertainty	E.4.1.1	5.00	N	1	1	1	5.00	5.00	
Output power Variation - SAR drift measurement	6.6.2	4.76	R	$\sqrt{3}$	1	1	2.75	2.75	∞
Phantom and Tissue Parameters									
Phantom Uncertainty (Shape and thickness tolerances)	E.3.1	0.05	R	$\sqrt{3}$	1	1	0.03	0.03	∞
Liquid conductivity - deviation from target value	E.3.2	0.57	R	$\sqrt{3}$	0.64	0.43	0.21	0.14	∞

Liquid conductivity - measurement uncertainty	E.3.3	5.00	N	1	0.64	0.43	3.20	2.15	M
Liquid permittivity - deviation from target value	E.3.2	3.66	R	$\sqrt{3}$	0.6	0.49	1.27	1.04	∞
Liquid permittivity - measurement uncertainty	E.3.3	10.00	N	1	0.6	0.49	6.00	4.90	M
Combined Standard Uncertainty			RSS				11.28	10.78	
Expanded Uncertainty (95% Confidence interval)			k				21.99	21.03	

4.3.4. Equipments and results of validation testing

Equipments :

name	Type and specification
Signal generator	E4433B
Directional coupler	450MHz-3GHz
Amplifier	3W 502(10-2500MHz)
Reference dipole	SN 36/08 DIPIC99

Results:

Frequency	Target value (1g)	250 mW input power	Test value (1g)
835MHz	9.5W/Kg	2.42 W/Kg(body)	9.68 W/Kg(body)

Note:Please refer to check the system performance data, the first 64-66 page.

4.3.5. Dielectric Performance

The measured 1-gram averaged SAR values of the device against the head and the body are provided in Tables 1 and 2 respectively. The humidity and ambient temperature of test facility were 54% ~60% and 23.0 °C ~23.8°C respectively. The SAM head phantom (SN 0381 SH) were full of the head tissue simulating liquid. The depth of the body tissue was 15.1cm. The distance between the back of the device and the bottom of the flat phantom is 1.5cm (taking into account of the IEEE 1528 and the place of the antenna). A base station simulator was used to control the device during the SAR measurement. The phone was supplied with full-charged battery for each measurement.

For head measurement, the device was tested at the lowest, middle and highest frequencies in the transmit band.

For body-worn measurements, the device was tested against flat phantom representing the user body. Under measurement phone was put on in the belt holder.

Table 1: Dielectric Performance of Body Tissue Simulating Liquid

Temperature: 23.0~23.8°C, humidity: 54~60%.			
/	Frequency	Permittivity ϵ	Conductivity σ (S/m)
Target value	835 MHz	55.2	0.97
Validation value (Feb 24)	835 MHz	54.116001	0.989164

4.3.6. Simulant liquids

Simulant liquids that are used for testing at frequencies of CDMA 800MHz or CDMA 1900MHz, which are made mainly of sugar, salt and water solutions may be left in the phantoms. Approximately 20litres are needed for an upright head compared to about 20litres for a horizontal bath phantom.

Ingredients (% by weight)	Frequency Band	
	835MHz	
Tissue Type	Head	Body
Water	41.45	52.4
Salt(NaCl)	1.45	1.4
Sugar	56.0	45.0
HEC	1.0	1.0
Bactericide	0.1	0.1
Triton	0.0	0.0
DGBE	0.0	0.0
Acticide SPX	0.0	0.0
Dielectric Constant	42.45	56.1
Conductivity (S/m)	0.91	0.95

4.4. MEASUREMENT PROCEDURES

4.4.1. Procedures Used To Establish Test Signal

The device was placed into a simulated call using a base station in a screen room. Such test signals offer a consistent means for testing SAR and recommended for evaluating SAR. The SAR measurement software calculates a reference point at the start and end of the test to check for power drifts. If conducted power deviations of more than 5% occurred, the tests were repeated.

4.4.2 SAR Measurement Conditions for CDMA2000 1x

These procedures were followed according to FCC "SAR Measurement Procedures for 3G Devices", October 2007 (Revised).

4.4.2.1 Output Power Verification

See 3GPP2 C.S0011/TIA-98-E as recommended by "SAR Measurement Procedures for 3G Devices", October 2007 (Revised).

Maximum output power is verified on the High, Middle and Low channels according to procedures in section 3.1.2.3.4 of 3GPP2 C.S0033-0/TIA-866 for Rev. 0 and section 4.3.4 of 3GPP2 C.S0033-A for Rev. A. For Rev. A, maximum output power for both Subtype 0/1 and Subtype 2 Physical Layer configurations should be measured. The device operating configurations under TAP/ETAP should be documented in the test report; including power control, code channel and RF channel output power levels. The measurement results should be tabulated in the SAR report with any measurement difficulties and equipment limitations clearly identified.

4.4.2.2 SAR Measurement

SAR is measured using FTAP/RTAP and FETAP/RETAP respectively for Rev. 0 and Rev. A devices. The AT is tested with a Reverse Data Channel rate of 153.6 kbps in Subtype 0/1 Physical Layer configurations; and a Reverse Data Channel payload size of 4096 bits and Termination Target of 16 slots in Subtype 2 Physical Layer configurations. Both FTAP and FETAP are configured with a Forward Traffic Channel data rate corresponding to the 2-slot version of 307.2 kbps with the ACK Channel transmitting in all slots. AT power control should be in "All Bits Up" conditions for TAP/ETAP.

Body SAR is measured using Subtype 0/1 Physical Layer configurations for Rev. 0. SAR for Subtype 2 Physical layer configurations is not required for Rev. A when the maximum average output of each RF channels is less than that measured in Subtype 0/1 Physical layer configurations. Otherwise, SAR is measured on the maximum output channel for Rev. A using the exposure configuration that results in the highest SAR for that RF channels in Rev. 0.17 Head SAR is required for Ev-Do devices that support operations next to the ear; for

example, with VOIP, using Subtype 2 Physical Layer configurations according to the required handset configurations.

4.4.2.3 1x RTT Support

For Ev-Do devices that also support 1x RTT voice and/or data operations, SAR is not required for 1x RTT when the maximum average output of each channel is less than ¼ dB higher than that measured in Subtype 0/1 Physical Layer configurations for Rev. 0. Otherwise, the 'Body SAR Measurements' procedures in the 'CDMA 2000 1x Handsets' section should be applied.

4.4.2.4 Output Power Verification 1x RTT

Maximum output power is verified on the High, Middle, and Low channels according to procedures in Section 4.4.5.2 of 3 GPP2 C.S0011/TIA-98-E. Results for at least steps 3,4 and 10 of the power measurement procedures should be tabulated in the SAR report. Steps 3 and 4 should be measured using SO55 with power control bits in "All Up" condition. TDSO/SO32 may be used instead of SO55 for step 4. Step 10 should be measured using TDSO/SO32 with power control bits in the "Bits Hold"

1xRTT Power Measurements

Channel	Radio Configuration and conducted Power (dBm)				
	RC1	RC2	RC3		
Low	23.68	23.72	23.46		
Mid	22.8	22.42	22.5		
High	23.15	22.93	22.68		
SO	SO2	SO9	SO55		

EvDo Rev A Power Measurements

1x EvDo Rev.A Type A [dBm] – FTAP rate = 2 Slot Version 307.2kbps						
	RTAP Rate	128kbps	2048 kbps	12288 kbps		
Band	Channel					
Cellular	1013	23.58	23.62	23.34		
	384	22.66	22.57	23.2		
	777	22.75	22.55	22.71		

Power Control was set in 'All Bits Up' for all measurements.

4.5. Items used in the Test Results List

Terms in the column “Verdict” for the test results list of the section 4.6:

Verdict	Description
PASS	EUT passed this test case
FAIL	EUT failed this test case
INC.	EUT did not pass and did not fail this test case, therefore the verdict is inconclusive
Decl.	“Declaration”: Morlab has received documents from the applicant and/or manufacturer which show conformity to the applied standards for this test case.
N/A	Test case not applicable for the EUT, see the column “Note” for detailed

4.6. Test Results List

Summary of Measurement Results (CDMA 800MHz Band)

SAR Values (CDMA 800MHz Band), Measured against the body.

Temperature: 23.0~23.8°C, humidity: 54~60%.		
Limit of SAR (W/kg)	1 g Average	
	1.2	
Test Case	Measurement Result (W/kg)	
	1 g Average (W/kg)	Power level (dBm)
Validation Plane with Body device position on Low Channel in CDMA mode (Horizontal-Up)	0.121	23.72
Validation Plane with Body device position on Middle Channel in CDMA mode (Horizontal-Up)	0.069	22.42
Validation Plane with Body device position on High Channel in CDMA mode (Horizontal-Up)	0.111	22.93
Validation Plane with Body device position on Low Channel in CDMA mode (Horizontal-Down)	0.162	23.72
Validation Plane with Body device position on Middle Channel in CDMA mode (Horizontal-Down)	0.078	22.42
Validation Plane with Body device position on High Channel in CDMA mode (Horizontal-Down)	0.134	22.93
Validation Plane with Body device position on Low Channel in CDMA mode (Vertical-Front)	0.060	23.72
Validation Plane with Body device position on Middle Channel in CDMA mode (Vertical-Front)	0.036	22.42
Validation Plane with Body device position on High Channel in CDMA mode (Vertical-Front)	0.061	22.93
Validation Plane with Body device position on Low Channel in CDMA mode (Vertical-Back)	0.047	23.72
Validation Plane with Body device position on Middle Channel in CDMA mode (Vertical-Back)	0.038	22.42
Validation Plane with Body device position on High Channel in CDMA mode (Vertical-Back)	0.058	22.93
Validation Plane with Body device position on Middle Channel in EVDO mode (Horizontal-Up)	0.162	22.75

Note: 1.The depth of the body tissue was 15.1cm. The distance between the back of the device and the bottom of the flat phantom is direct contact .

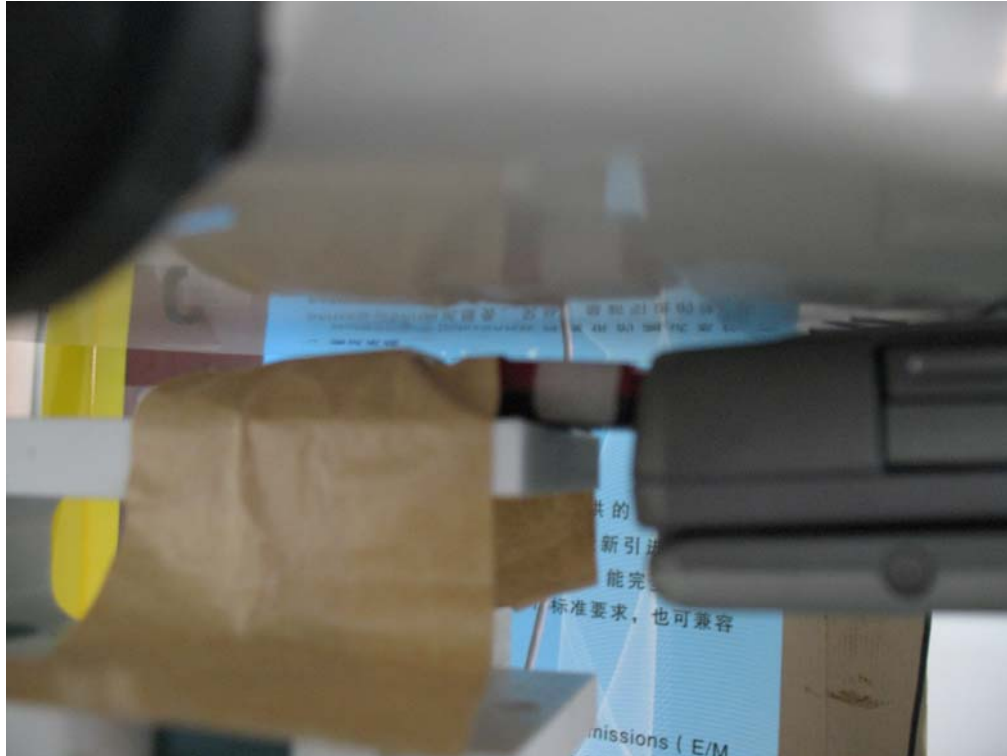
2. The separation distance is determined according to FCC KDB 447498 D01 Section 2(b)(ii)(1) states, the SAR value of 5mm distance is less than 50% of initial touching position.

Annex A Accreditation Certificate

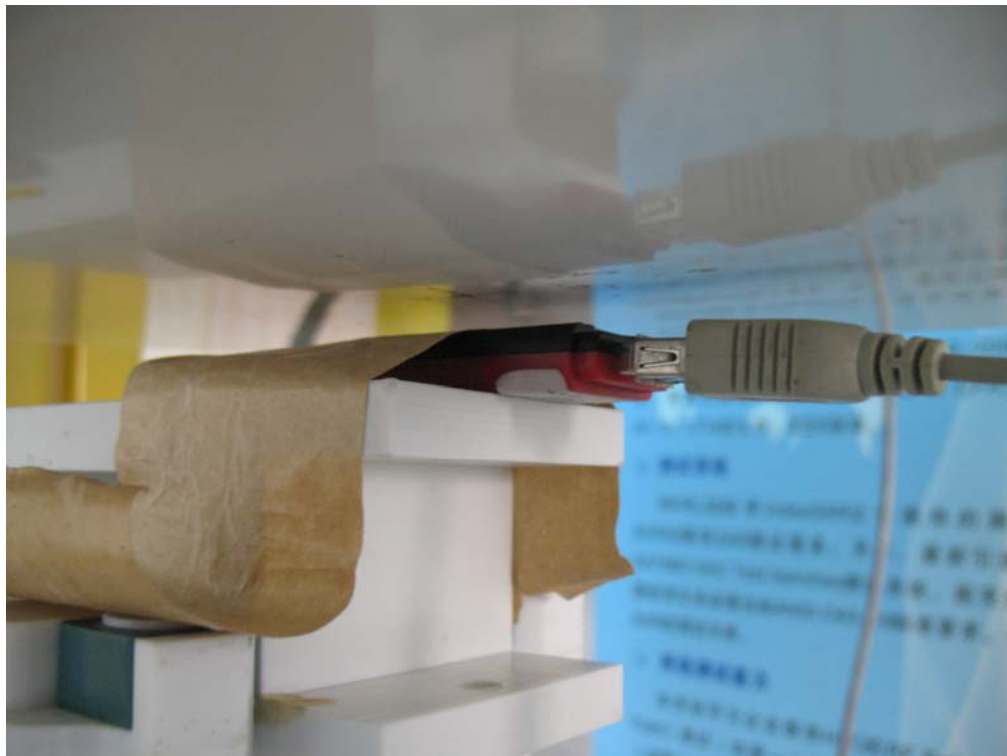
<div></div> <div>China National Accreditation Service for Conformity Assessment</div> <div>LABORATORY ACCREDITATION CERTIFICATE</div> <div>(No. CNAS L1659)</div> <div><i>China National Accreditation Service for Conformity Assessment has accredited</i></div> <div>Shenzhen Electronic Product Quality Testing Center</div> <div><u>Electronic Testing Building, Shahe Road, Xili, Nanshan District,</u> <u>Shenzhen, Guangdong, China</u></div> <div><i>to ISO/IEC 17025:2005 General Requirements for the Competence of Testing and Calibration Laboratories(CNAS-CL01 Accreditation Criteria for the Competence of Testing and Calibration Laboratories) for the competence in the field of testing and calibration.</i></div> <div><i>The scope of accreditation is detailed in the attached schedule bearing the same accreditation number as above. The schedule forms an integral part of this certificate.</i></div> <div>Date of Issue: 2009-09-29</div> <div>Date of Expiry: 2012-09-28</div> <div>Date of Initial Accreditation: 1999-08-03</div> <div></div> <div>Signed on behalf of China National Accreditation Service for Conformity Assessment</div> <div><small>China National Accreditation Service for Conformity Assessment(CNAS) is authorized by Certification and Accreditation Administration of the People's Republic of China (CNCA) to operate the national accreditation systems for conformity assessment. CNAS is the signatory to International Laboratory Accreditation Cooperation Multilateral Recognition Arrangement (ILAC MRA), and the signatory to Asia Pacific Laboratory Accreditation Cooperation Multilateral Recognition Arrangement (APLAC MRA).</small></div>
--

Annex B Photographs of the EUT

1 EUT Horizontal-Up



2 EUT Horizontal-Down



3 EUT Vertical-Front



4 EUT Vertical-Back



Annex C Graph Test Results

<u>TYPE</u>	BAND	<u>PARAMETERS</u>
	CDMA800	<p>Measurement 1: Validation Plane with Body device position on Low Channel in CDMA mode (Horizontal-Up)</p> <p>Measurement 2: Validation Plane with Body device position on Middle Channel in CDMA mode (Horizontal-Up)</p> <p>Measurement 3: Validation Plane with Body device position on High Channel in CDMA mode (Horizontal-Up)</p> <p>Measurement 4: Validation Plane with Body device position on Low Channel in CDMA mode (Horizontal-Down)</p> <p>Measurement 5: Validation Plane with Body device position on Middle Channel in CDMA mode (Horizontal-Down)</p> <p>Measurement 6: Validation Plane with Body device position on High Channel in CDMA mode (Horizontal-Down)</p> <p>Measurement 7: Validation Plane with Body device position on Low Channel in CDMA mode (Vertical-Front)</p> <p>Measurement 8: Validation Plane with Body device position on Middle Channel in CDMA mode (Vertical-Front)</p> <p>Measurement 9: Validation Plane with Body device position on High Channel in CDMA mode (Vertical-Front)</p> <p>Measurement 10: Validation Plane with Body device position on Low Channel in CDMA mode (Vertical-Back)</p> <p>Measurement 11: Validation Plane with Body device position on Middle Channel in CDMA mode (Vertical-Back)</p> <p>Measurement 12: Validation Plane with Body device position on High Channel in CDMA mode (Vertical-Back)</p> <p>Measurement 13: Validation Plane with Body device</p>



		position on Middle Channel in EVDO mode (Horizontal-Up)
--	--	--

MEASUREMENT 1

Type: Phone measurement (Complete)

Area scan resolution: dx=8mm,dy=8mm

Zoom scan resolution: dx=5mm, dy=5mm, dz=5mm

Date of measurement: 24/2/2010

Measurement duration: 13 minutes 6 seconds

A. Experimental conditions.

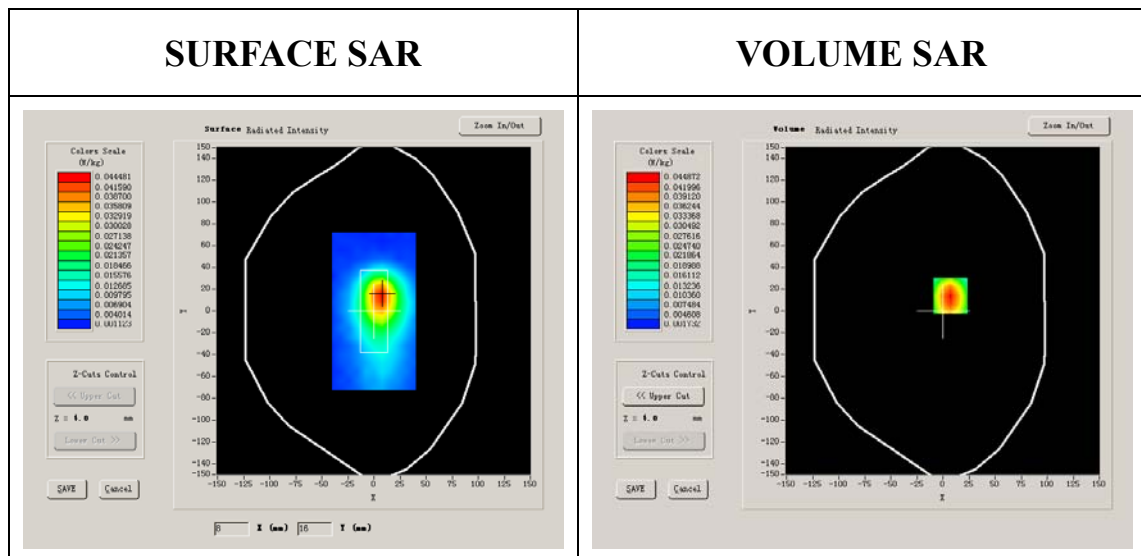
Phantom File	surf_sam_plan.txt
Phantom	Validation plane
Device Position	Body
Band	CDMA850
Channels	Low
Signal	CDMA

B. SAR Measurement Results

Lower Band SAR (Channel 1013):

Frequency (MHz)	824.700012
Relative permittivity (real part)	54.116001
Relative permittivity	21.284550

Conductivity (S/m)	0.975187
Variation (%)	-1.280000
Ambient Temperature:	22.4°C
Liquid Temperature:	22.1°C
ConvF:	28.559,25.681,27.588
Crest factor:	1:1



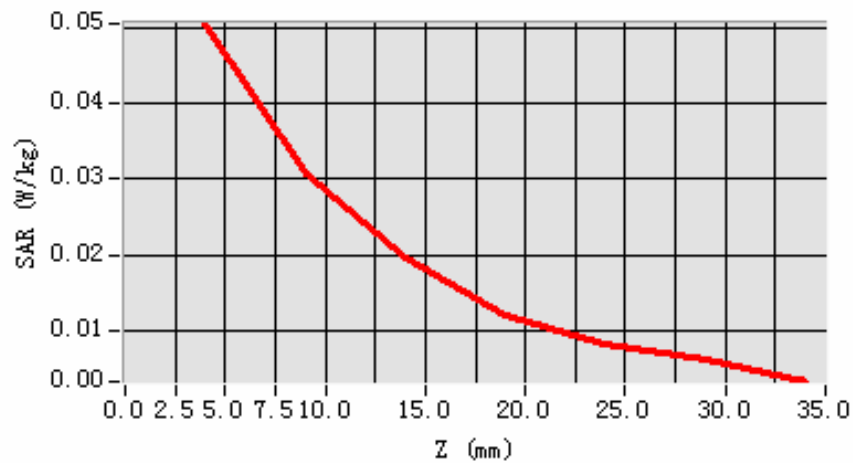
Maximum location: X=7.00, Y=14.00

SAR 10g (W/Kg)	0.028242
SAR 1g (W/Kg)	0.047380

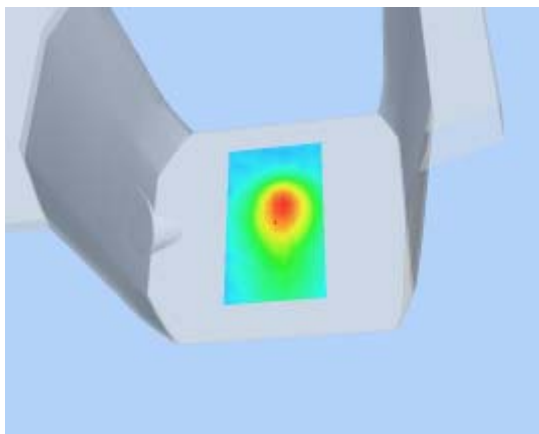
Z Axis Scan

Z (mm)	0.00	4.00	9.00	14.00	19.00	24.00	29.00
SAR (W/Kg)	0.0000	0.0505	0.0308	0.0196	0.0119	0.0083	0.0062

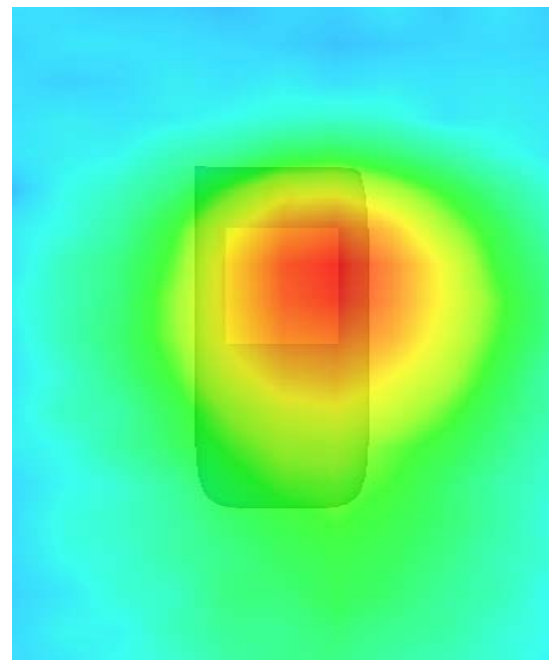
SAR, Z Axis Scan (X = 7, Y = 14)



3D scene shot



Hot spot position



MEASUREMENT 2

Type: Phone measurement (Complete)

Area scan resolution: dx=8mm,dy=8mm

Zoom scan resolution: dx=5mm, dy=5mm, dz=5mm

Date of measurement: 24/2/2010

Measurement duration: 13 minutes 3 seconds

A. Experimental conditions.

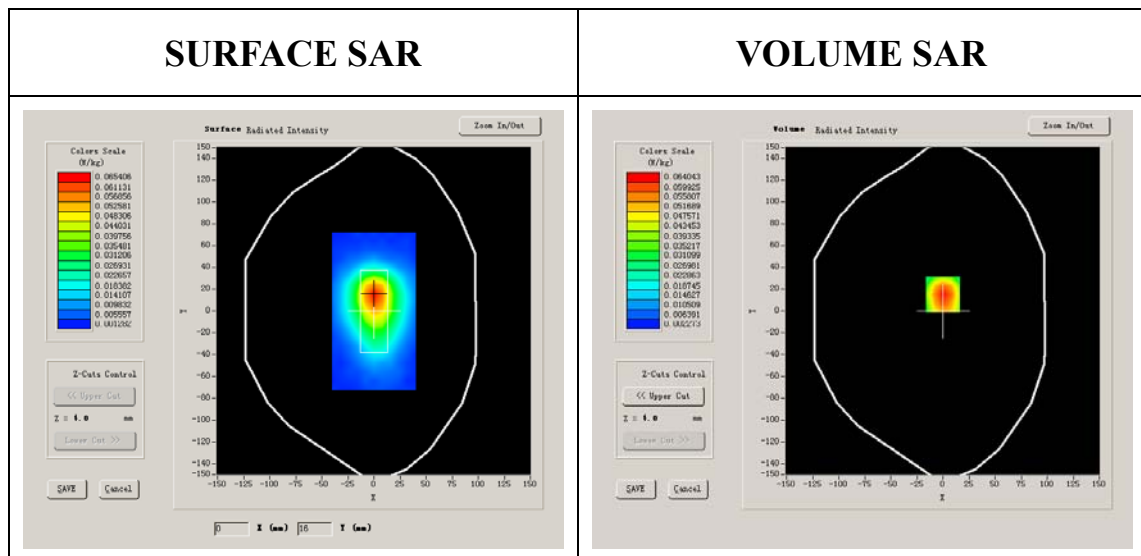
Phantom File	surf_sam_plan.txt
Phantom	Validation plane
Device Position	Body
Band	CDMA850
Channels	Middle
Signal	CDMA

B. SAR Measurement Results

Middle Band SAR (Channel 384):

Frequency (MHz)	836.520020
Relative permittivity (real part)	54.116001
Relative permittivity	21.284550

Conductivity (S/m)	0.989164
Variation (%)	-1.410000
Ambient Temperature:	22.4°C
Liquid Temperature:	22.1°C
ConvF:	28.559,25.681,27.588
Crest factor:	1:1



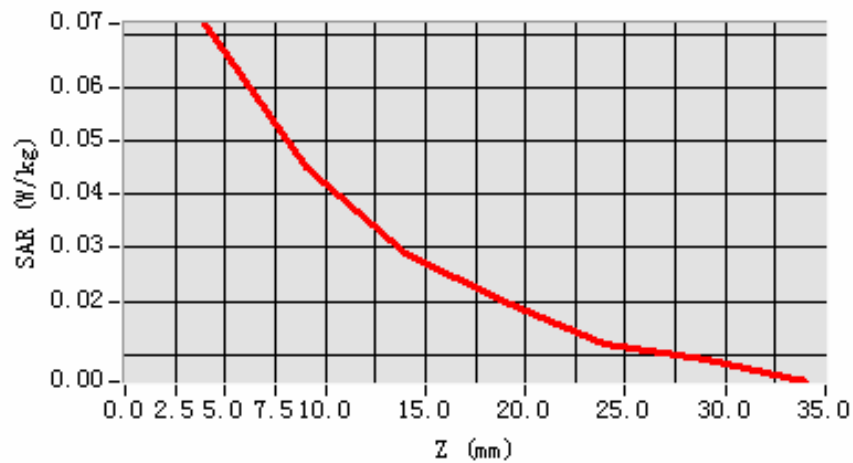
Maximum location: X=0.00, Y=15.00

SAR 10g (W/Kg)	0.042132
SAR 1g (W/Kg)	0.068604

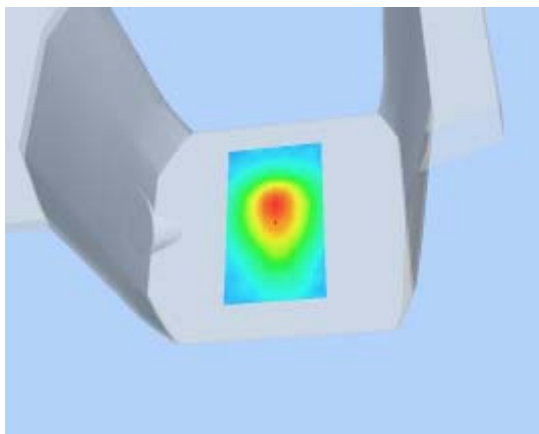
Z Axis Scan

Z (mm)	0.00	4.00	9.00	14.00	19.00	24.00	29.00
SAR (W/Kg)	0.0000	0.0720	0.0453	0.0290	0.0201	0.0118	0.0091

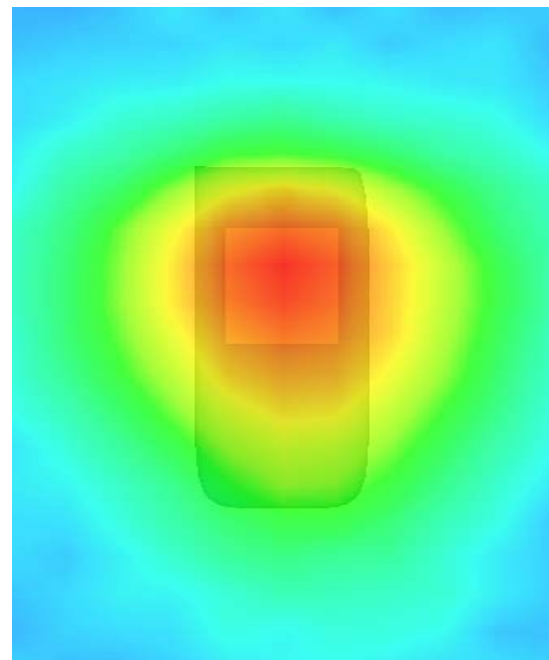
SAR, Z Axis Scan (X = 0, Y = 15)



3D scene shot



Hot spot position



MEASUREMENT 3

Type: Phone measurement (Complete)

Area scan resolution: dx=8mm,dy=8mm

Zoom scan resolution: dx=5mm, dy=5mm, dz=5mm

Date of measurement: 24/2/2010

Measurement duration: 13 minutes 6 seconds

A. Experimental conditions.

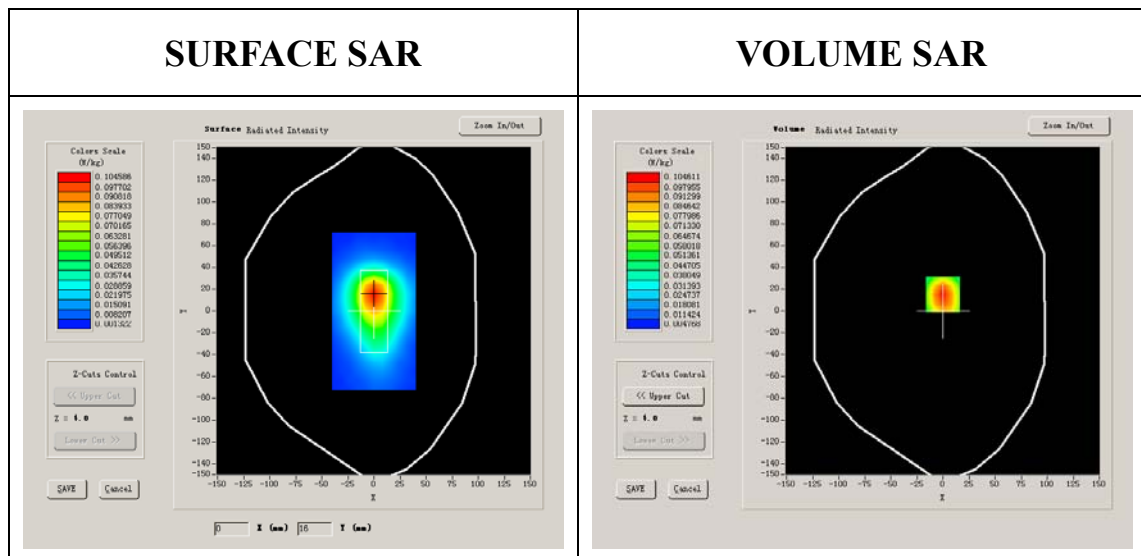
Phantom File	surf_sam_plan.txt
Phantom	Validation plane
Device Position	Body
Band	CDMA850
Channels	High
Signal	CDMA

B. SAR Measurement Results

Higher Band SAR (Channel 777):

Frequency (MHz)	848.309998
Relative permittivity (real part)	54.116001
Relative permittivity	21.284550

Conductivity (S/m)	1.003105
Variation (%)	-0.190000
Ambient Temperature:	22.4°C
Liquid Temperature:	22.1°C
ConvF:	28.559,25.681,27.588
Crest factor:	1:1



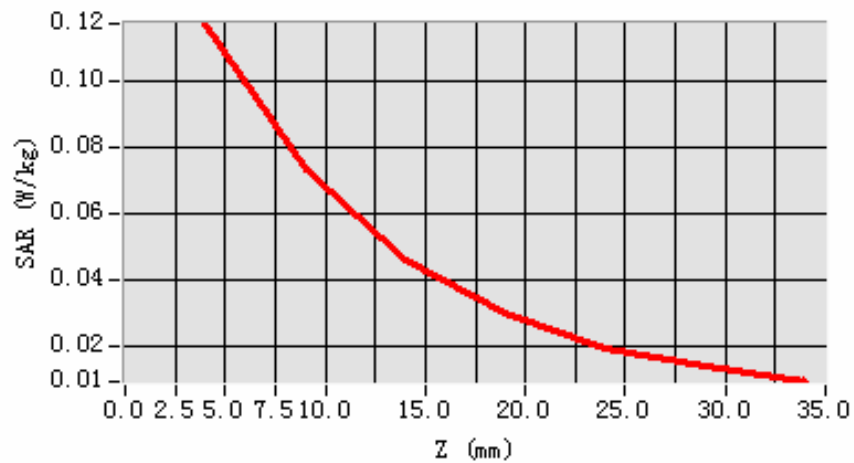
Maximum location: X=0.00, Y=15.00

SAR 10g (W/Kg)	0.066988
SAR 1g (W/Kg)	0.110626

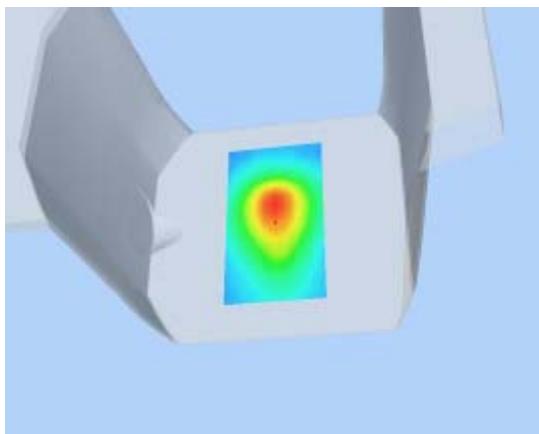
Z Axis Scan

Z (mm)	0.00	4.00	9.00	14.00	19.00	24.00	29.00
SAR (W/Kg)	0.0000	0.1176	0.0738	0.0458	0.0301	0.0192	0.0142

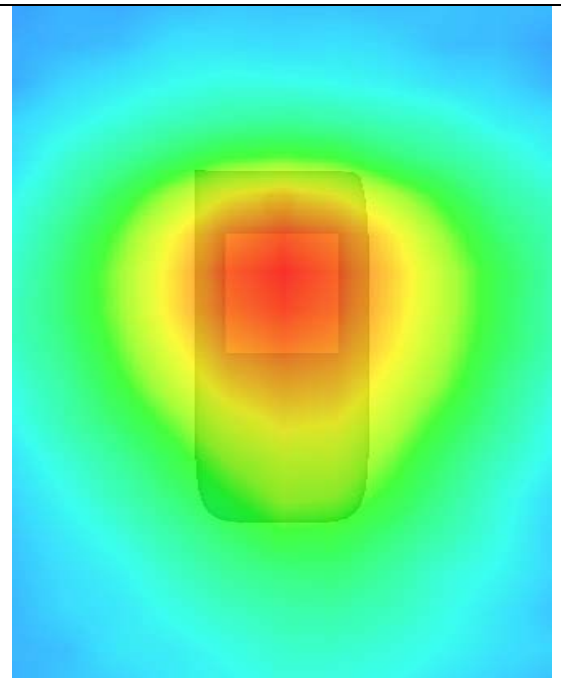
SAR, Z Axis Scan (X = 0, Y = 15)



3D scene shot



Hot spot position



MEASUREMENT 4

Type: Phone measurement (Complete)

Area scan resolution: dx=8mm,dy=8mm

Zoom scan resolution: dx=5mm, dy=5mm, dz=5mm

Date of measurement: 24/2/2010

Measurement duration: 13 minutes 6 seconds

A. Experimental conditions.

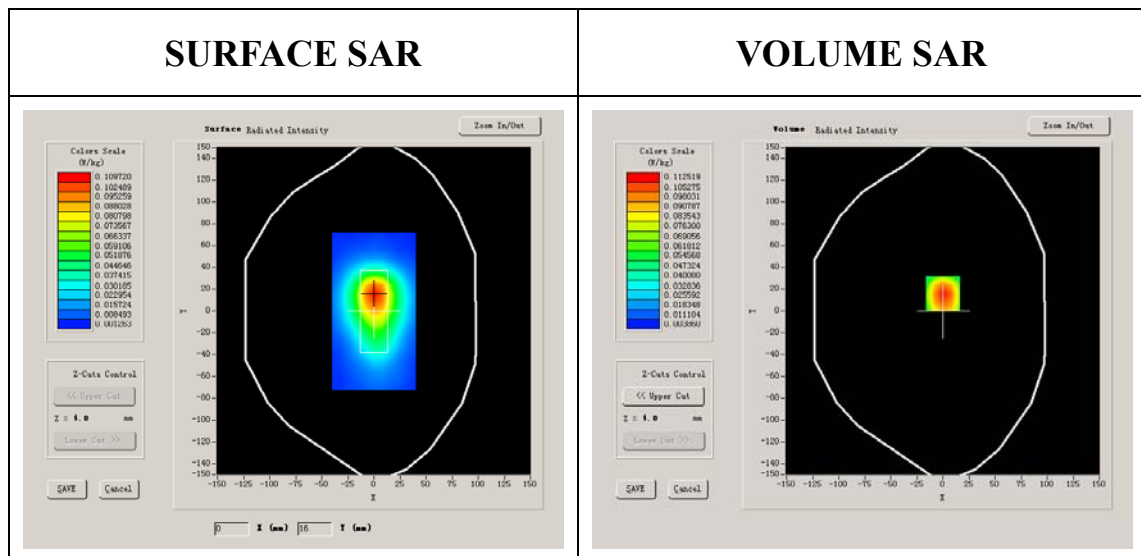
Phantom File	surf_sam_plan.txt
Phantom	Validation plane
Device Position	Body
Band	CDMA850
Channels	Low
Signal	CDMA

B. SAR Measurement Results

Lower Band SAR (Channel 1013):

Frequency (MHz)	824.700012
Relative permittivity (real part)	54.116001
Relative permittivity	21.284550

Conductivity (S/m)	0.975187
Variation (%)	0.450000
Ambient Temperature:	22.4°C
Liquid Temperature:	22.1°C
ConvF:	28.559,25.681,27.588
Crest factor:	1:1



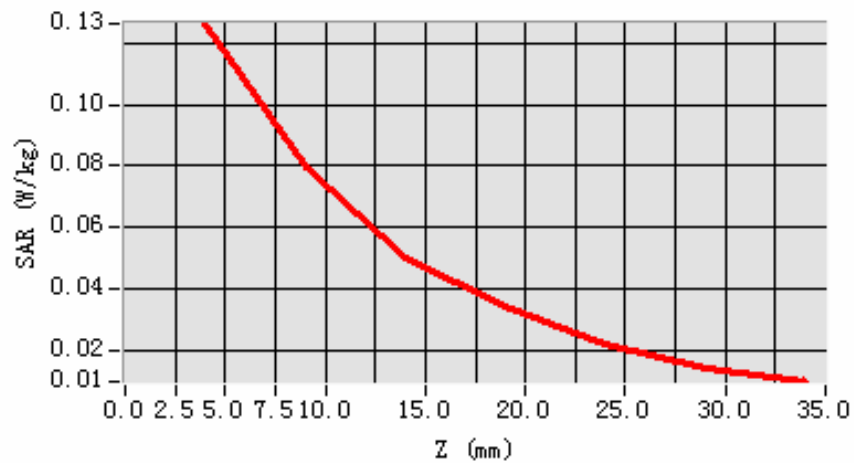
Maximum location: X=0.00, Y=16.00

SAR 10g (W/Kg)	0.073914
SAR 1g (W/Kg)	0.120886

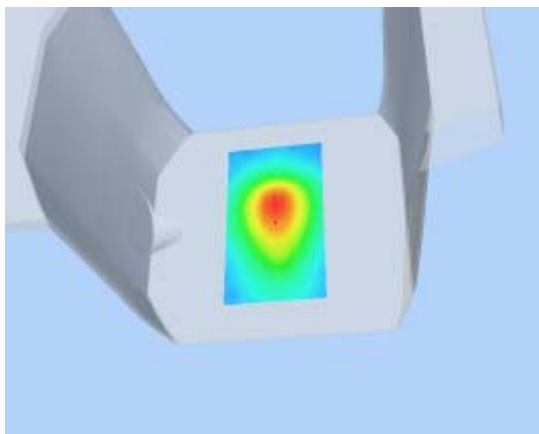
Z Axis Scan

Z (mm)	0.00	4.00	9.00	14.00	19.00	24.00	29.00
SAR (W/Kg)	0.0000	0.1265	0.0797	0.0497	0.0340	0.0221	0.0138

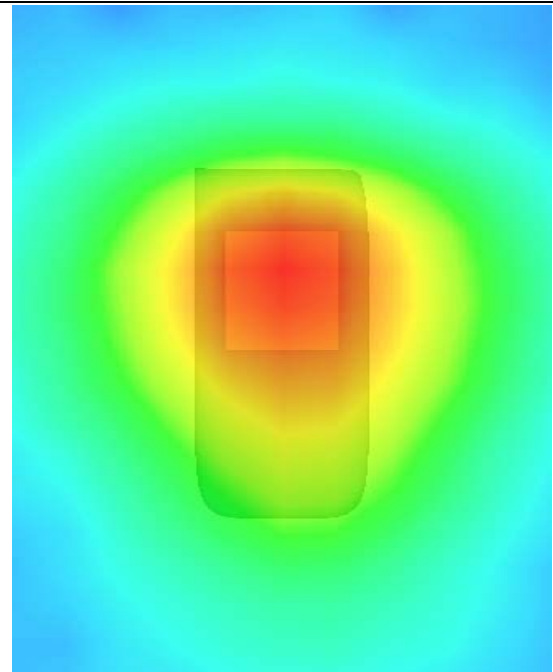
SAR, Z Axis Scan (X = 0, Y = 16)



3D scene shot



Hot spot position



MEASUREMENT 5

Type: Phone measurement (Complete)

Area scan resolution: dx=8mm,dy=8mm

Zoom scan resolution: dx=5mm, dy=5mm, dz=5mm

Date of measurement: 24/2/2010

Measurement duration: 13 minutes 7 seconds

A. Experimental conditions.

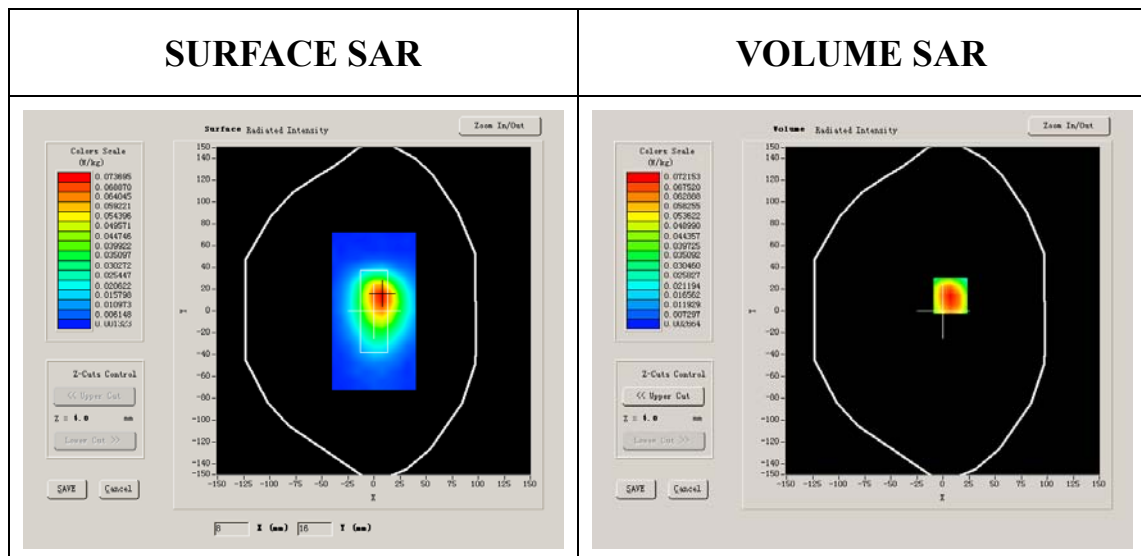
Phantom File	surf_sam_plan.txt
Phantom	Validation plane
Device Position	Body
Band	CDMA850
Channels	Middle
Signal	CDMA

B. SAR Measurement Results

Middle Band SAR (Channel 384):

Frequency (MHz)	836.520020
Relative permittivity (real part)	54.116001
Relative permittivity	21.284550

Conductivity (S/m)	0.989164
Variation (%)	-1.450000
Ambient Temperature:	22.4°C
Liquid Temperature:	22.1°C
ConvF:	28.559,25.681,27.588
Crest factor:	1:1



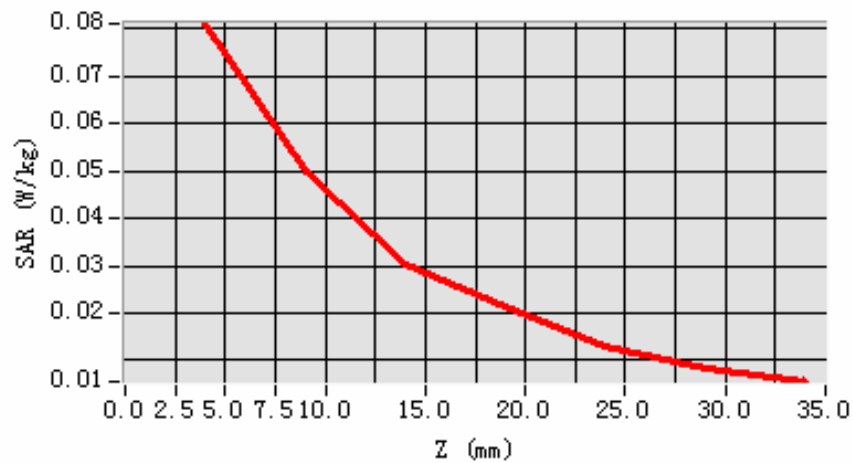
Maximum location: X=7.00, Y=14.00

SAR 10g (W/Kg)	0.047389
SAR 1g (W/Kg)	0.078086

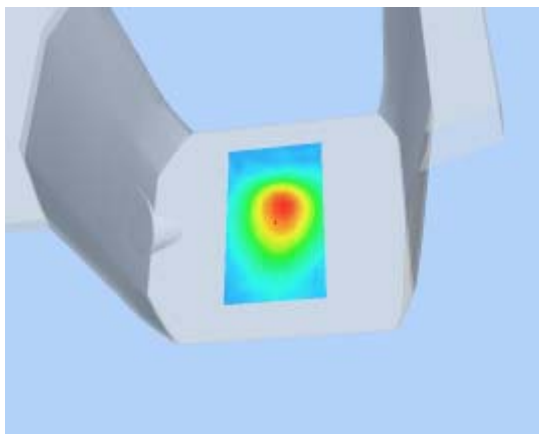
Z Axis Scan

Z (mm)	0.00	4.00	9.00	14.00	19.00	24.00	29.00
SAR (W/Kg)	0.0000	0.0811	0.0497	0.0303	0.0211	0.0128	0.0085

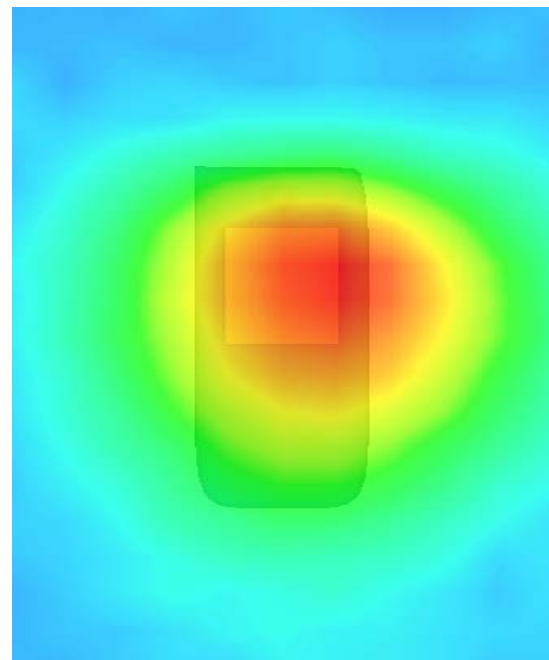
SAR, Z Axis Scan (X = 7, Y = 14)



3D scene shot



Hot spot position



MEASUREMENT 6

Type: Phone measurement (Complete)

Area scan resolution: dx=8mm,dy=8mm

Zoom scan resolution: dx=5mm, dy=5mm, dz=5mm

Date of measurement: 24/2/2010

Measurement duration: 13 minutes 6 seconds

A. Experimental conditions.

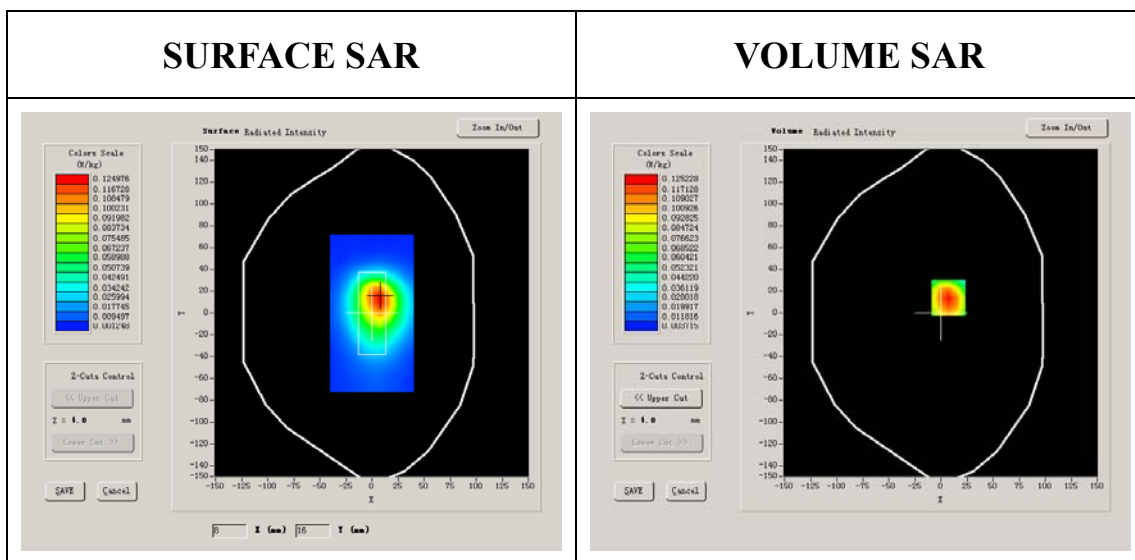
Phantom File	surf_sam_plan.txt
Phantom	Validation plane
Device Position	Body
Band	CDMA850
Channels	High
Signal	CDMA

B. SAR Measurement Results

Higher Band SAR (Channel 777):

Frequency (MHz)	848.309998
Relative permittivity (real part)	54.116001
Relative permittivity	21.284550

Conductivity (S/m)	1.003105
Variation (%)	-0.150000
Ambient Temperature:	22.4°C
Liquid Temperature:	22.1°C
ConvF:	28.559,25.681,27.588
Crest factor:	1:1



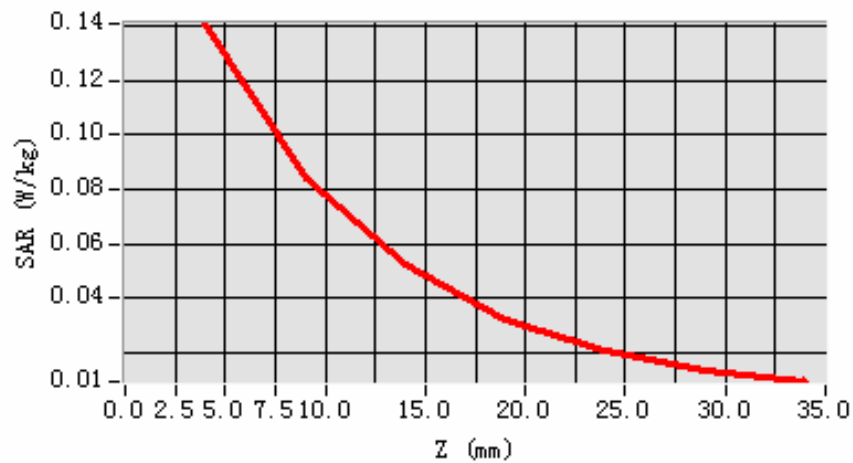
Maximum location: X=7.00, Y=14.00

SAR 10g (W/Kg)	0.079873
SAR 1g (W/Kg)	0.133794

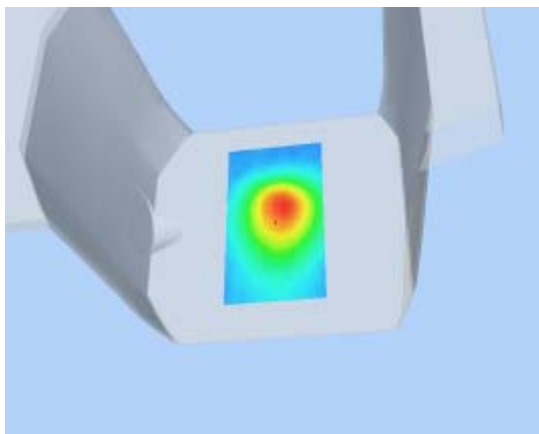
Z Axis Scan

Z (mm)	0.00	4.00	9.00	14.00	19.00	24.00	29.00
SAR (W/Kg)	0.0000	0.1408	0.0844	0.0530	0.0321	0.0208	0.0138

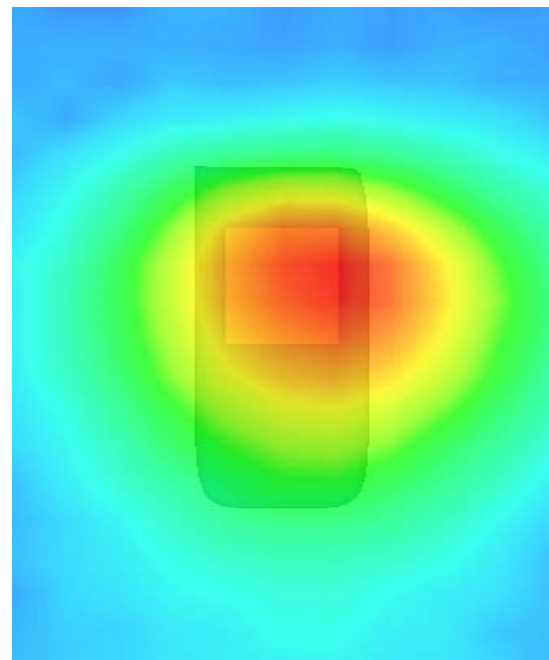
SAR, Z Axis Scan (X = 7, Y = 14)



3D scene shot



Hot spot position



MEASUREMENT 7

Type: Phone measurement (Complete)

Area scan resolution: dx=8mm,dy=8mm

Zoom scan resolution: dx=5mm, dy=5mm, dz=5mm

Date of measurement: 24/2/2010

Measurement duration: 13 minutes 6 seconds

A. Experimental conditions.

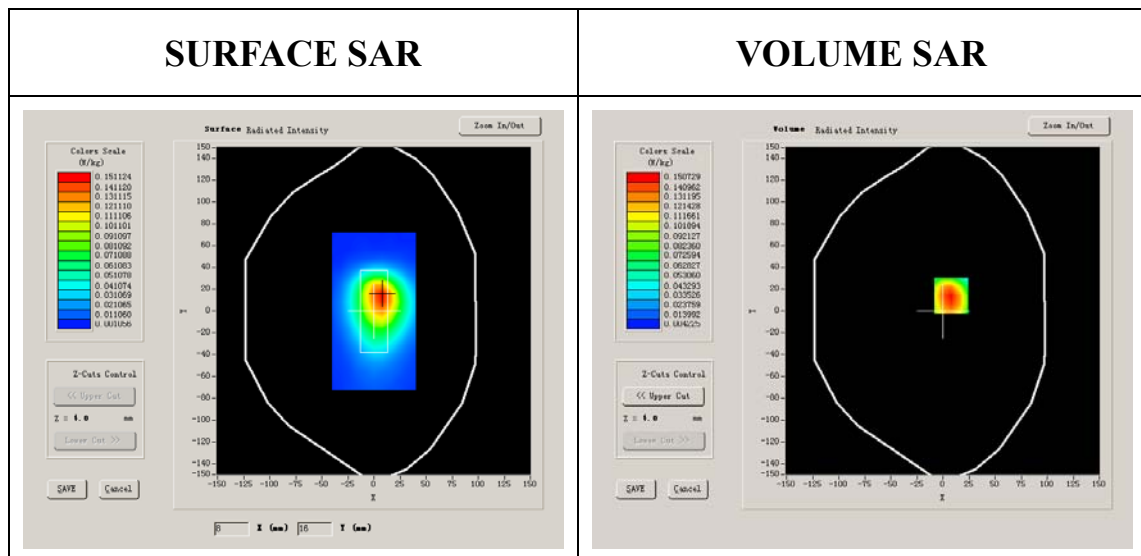
Phantom File	surf_sam_plan.txt
Phantom	Validation plane
Device Position	Body
Band	CDMA850
Channels	Low
Signal	CDMA

B. SAR Measurement Results

Lower Band SAR (Channel 1013):

Frequency (MHz)	824.700012
Relative permittivity (real part)	54.116001
Relative permittivity	21.284550

Conductivity (S/m)	0.975187
Variation (%)	-3.640000
Ambient Temperature:	22.4°C
Liquid Temperature:	22.1°C
ConvF:	28.559,25.681,27.588
Crest factor:	1:1



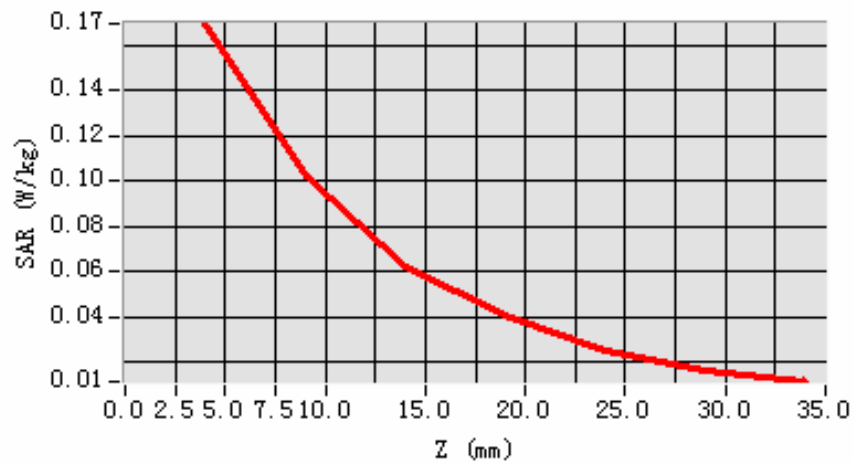
Maximum location: X=8.00, Y=14.00

SAR 10g (W/Kg)	0.096933
SAR 1g (W/Kg)	0.162385

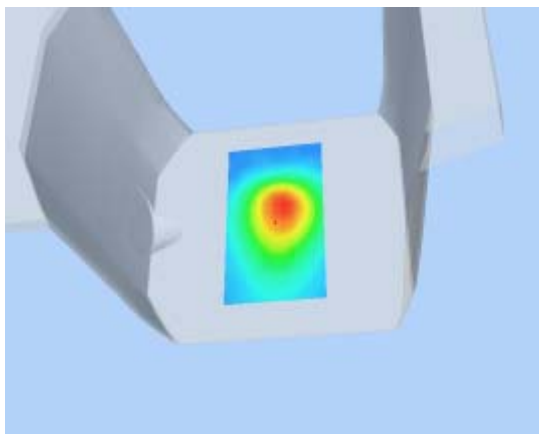
Z Axis Scan

Z (mm)	0.00	4.00	9.00	14.00	19.00	24.00	29.00
SAR (W/Kg)	0.0000	0.1695	0.1022	0.0620	0.0404	0.0255	0.0166

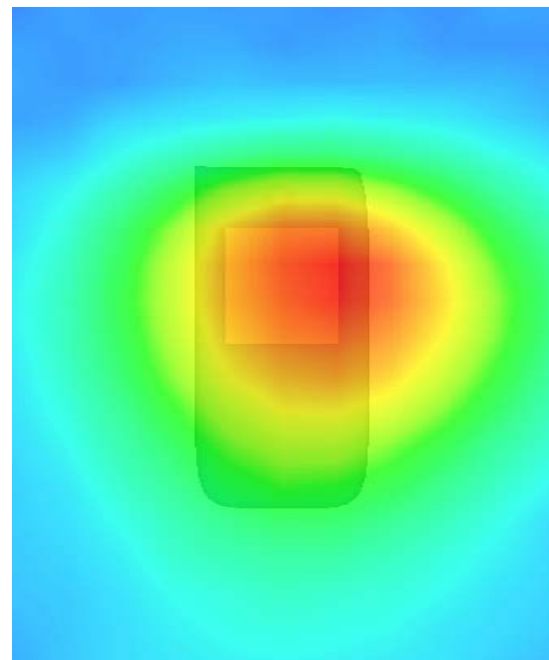
SAR, Z Axis Scan (X = 8, Y = 14)



3D scene shot



Hot spot position



MEASUREMENT 8

Type: Phone measurement (Complete)

Area scan resolution: dx=8mm,dy=8mm

Zoom scan resolution: dx=5mm, dy=5mm, dz=5mm

Date of measurement: 24/2/2010

Measurement duration: 13 minutes 6 seconds

A. Experimental conditions.

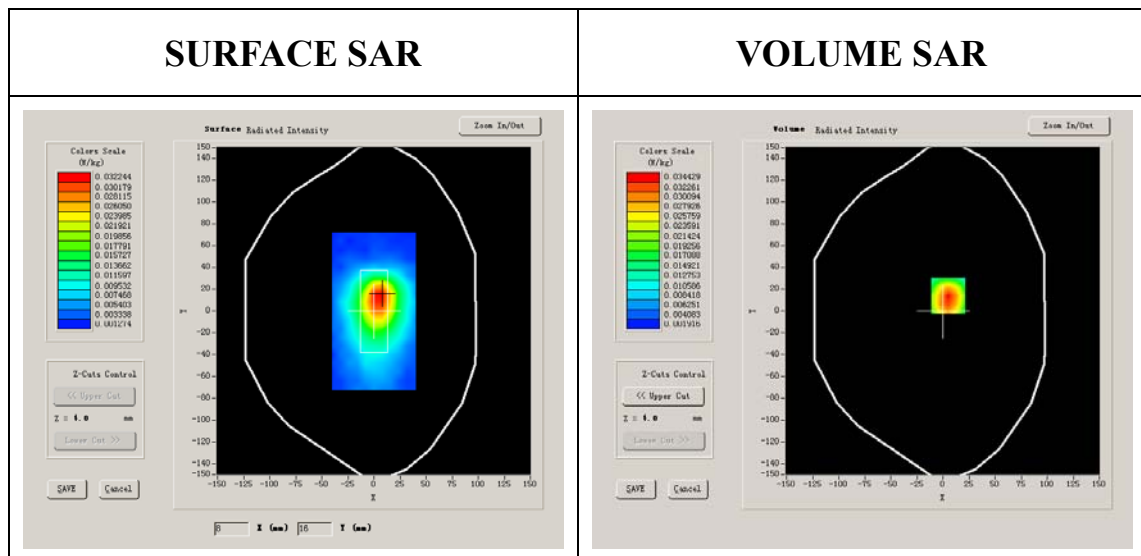
Phantom File	surf_sam_plan.txt
Phantom	Validation plane
Device Position	Body
Band	CDMA850
Channels	Middle
Signal	CDMA

B. SAR Measurement Results

Middle Band SAR (Channel 384):

Frequency (MHz)	836.520020
Relative permittivity (real part)	54.116001
Relative permittivity	21.284550

Conductivity (S/m)	0.989164
Variation (%)	-0.800000
Ambient Temperature:	22.4°C
Liquid Temperature:	22.1°C
ConvF:	28.559,25.681,27.588
Crest factor:	1:1



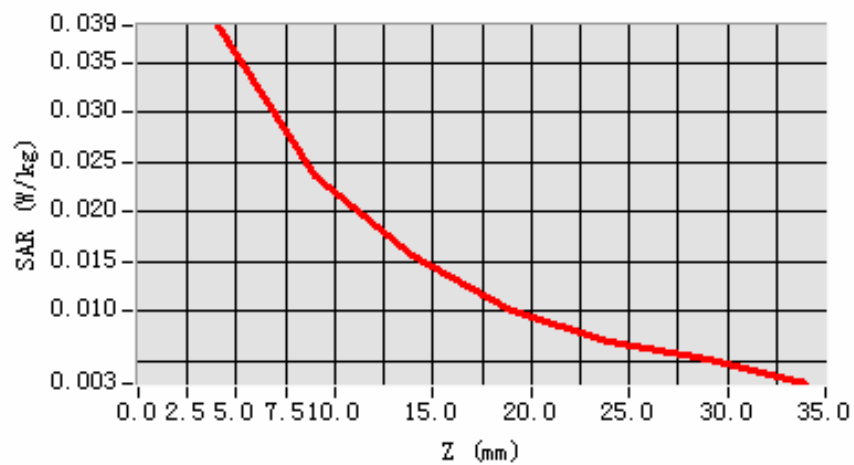
Maximum location: X=5.00, Y=14.00

SAR 10g (W/Kg)	0.022053
SAR 1g (W/Kg)	0.036418

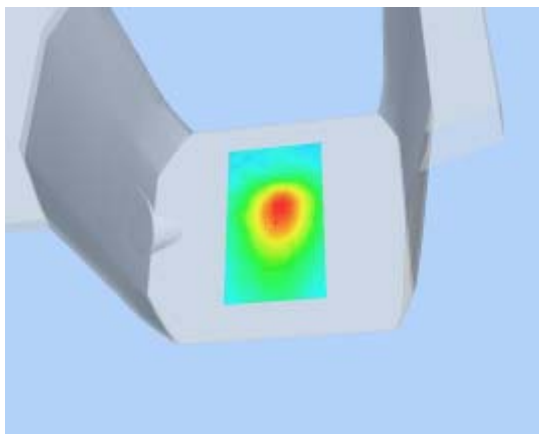
Z Axis Scan

Z (mm)	0.00	4.00	9.00	14.00	19.00	24.00	29.00
SAR (W/Kg)	0.0000	0.0387	0.0237	0.0156	0.0100	0.0069	0.0053

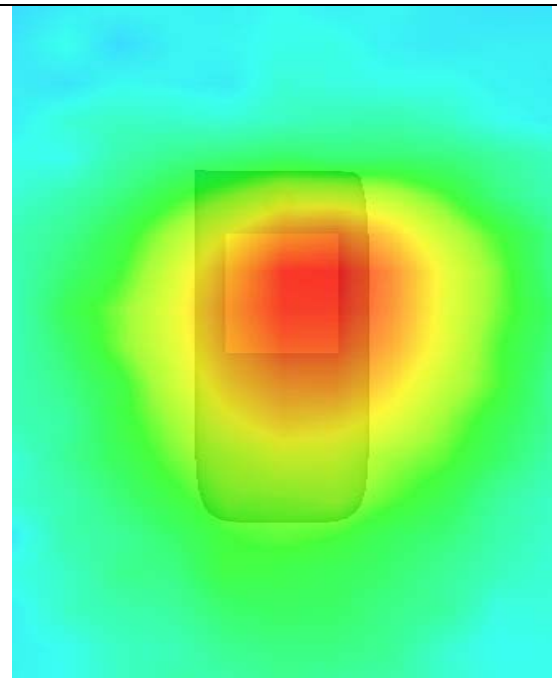
SAR, Z Axis Scan (X = 5, Y = 14)



3D scene shot



Hot spot position



MEASUREMENT 9

Type: Phone measurement (Complete)

Area scan resolution: dx=8mm,dy=8mm

Zoom scan resolution: dx=5mm, dy=5mm, dz=5mm

Date of measurement: 24/2/2010

Measurement duration: 13 minutes 6 seconds

A. Experimental conditions.

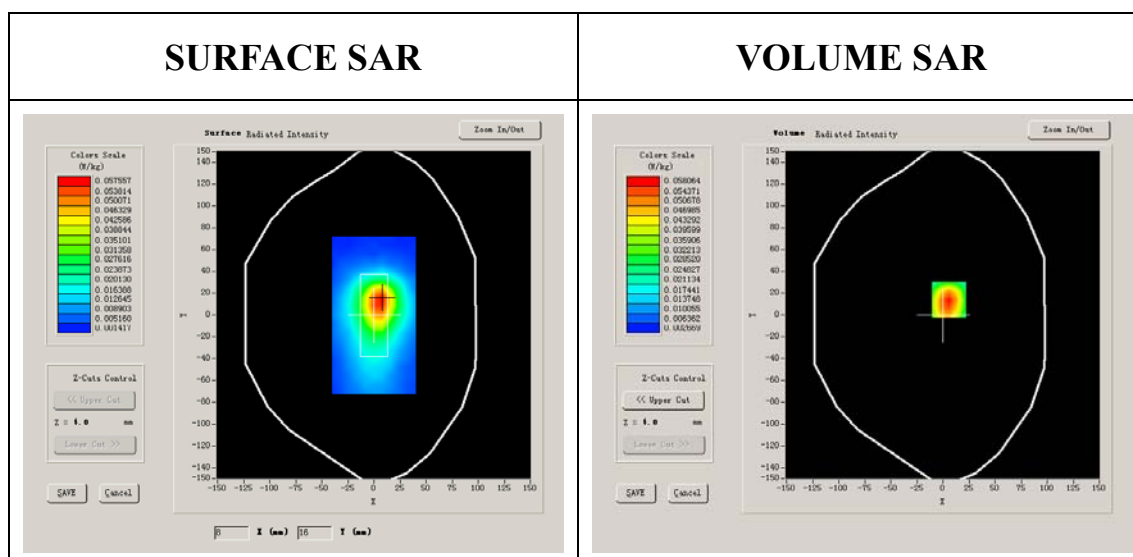
Phantom File	surf_sam_plan.txt
Phantom	Validation plane
Device Position	Body
Band	CDMA850
Channels	High
Signal	CDMA

B. SAR Measurement Results

Higher Band SAR (Channel 777):

Frequency (MHz)	848.309998
Relative permittivity (real part)	54.116001
Relative permittivity	21.284550

Conductivity (S/m)	1.003105
Variation (%)	0.150000
Ambient Temperature:	22.4°C
Liquid Temperature:	22.1°C
ConvF:	28.559,25.681,27.588
Crest factor:	1:1



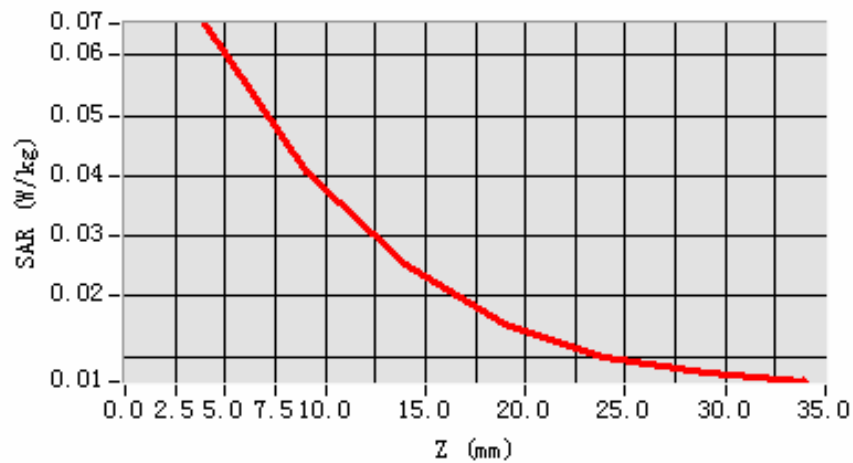
Maximum location: X=6.00, Y=14.00

SAR 10g (W/Kg)	0.036811
SAR 1g (W/Kg)	0.061260

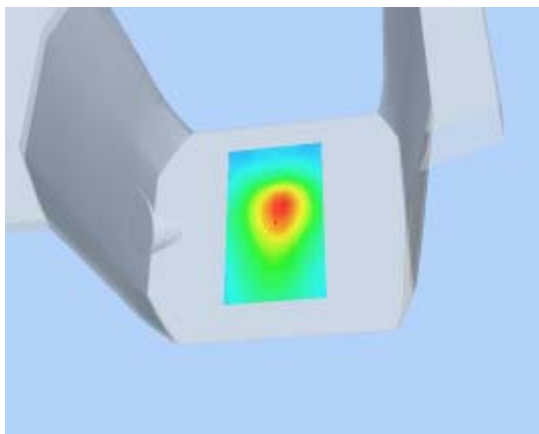
Z Axis Scan

Z (mm)	0.00	4.00	9.00	14.00	19.00	24.00	29.00
SAR (W/Kg)	0.0000	0.0653	0.0407	0.0254	0.0153	0.0097	0.0073

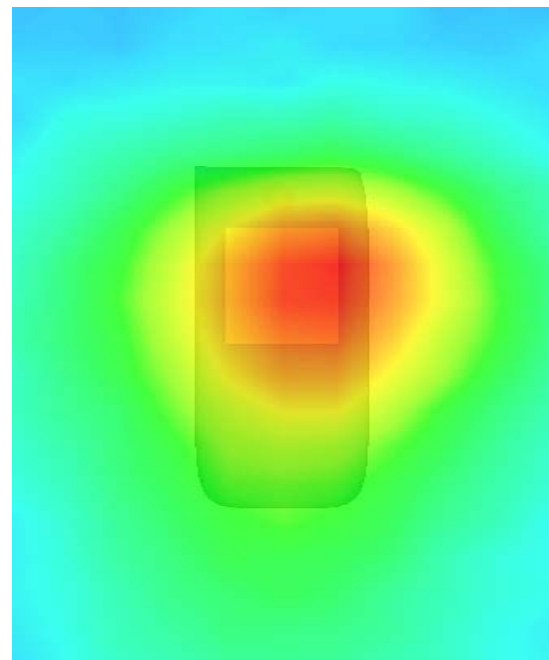
SAR, Z Axis Scan (X = 6, Y = 14)



3D scene shot



Hot spot position



MEASUREMENT 10

Type: Phone measurement (Complete)

Area scan resolution: dx=8mm,dy=8mm

Zoom scan resolution: dx=5mm, dy=5mm, dz=5mm

Date of measurement: 24/2/2010

Measurement duration: 13 minutes 6 seconds

A. Experimental conditions.

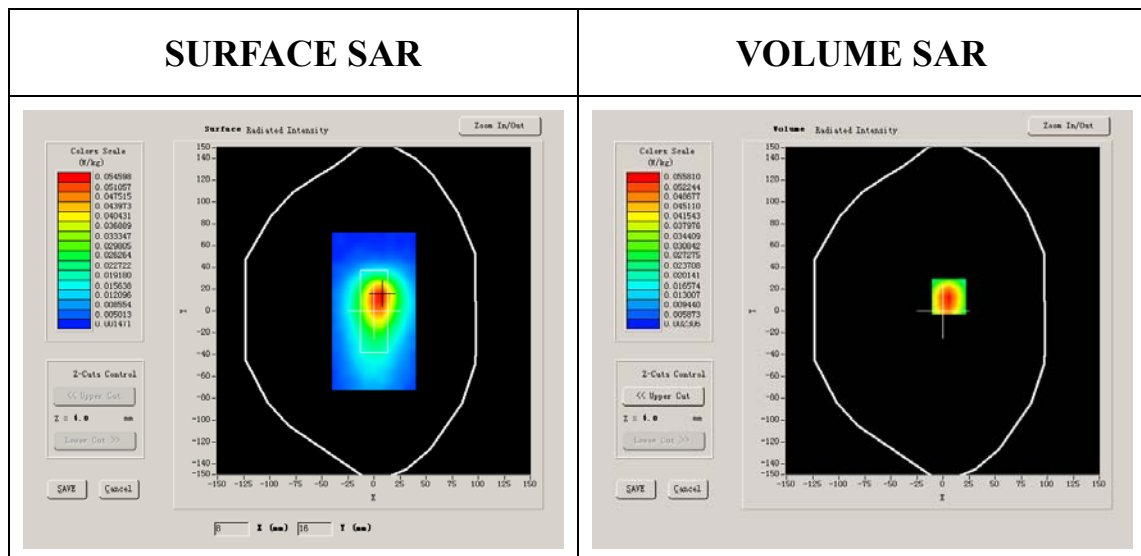
Phantom File	surf_sam_plan.txt
Phantom	Validation plane
Device Position	Body
Band	CDMA850
Channels	Low
Signal	CDMA

B. SAR Measurement Results

Lower Band SAR (Channel 1013):

Frequency (MHz)	824.700012
Relative permittivity (real part)	54.116001
Relative permittivity	21.284550

Conductivity (S/m)	0.975187
Variation (%)	0.860000
Ambient Temperature:	22.4°C
Liquid Temperature:	22.1°C
ConvF:	28.559,25.681,27.588
Crest factor:	1:1



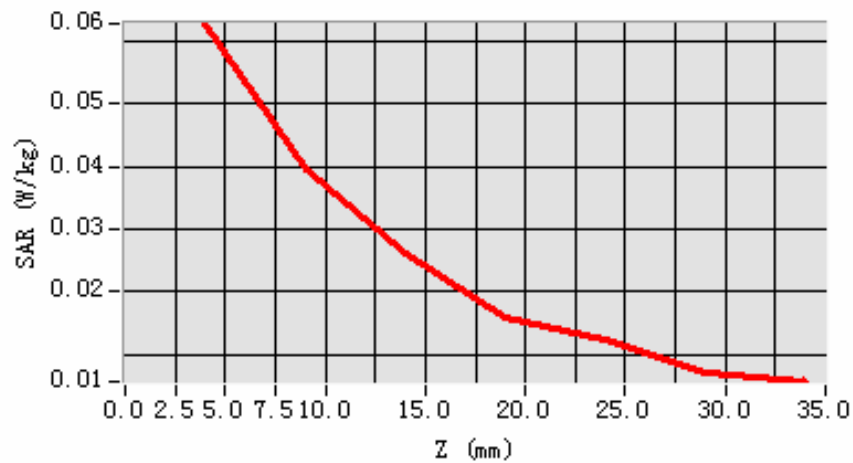
Maximum location: X=6.00, Y=13.00

SAR 10g (W/Kg)	0.036355
SAR 1g (W/Kg)	0.059650

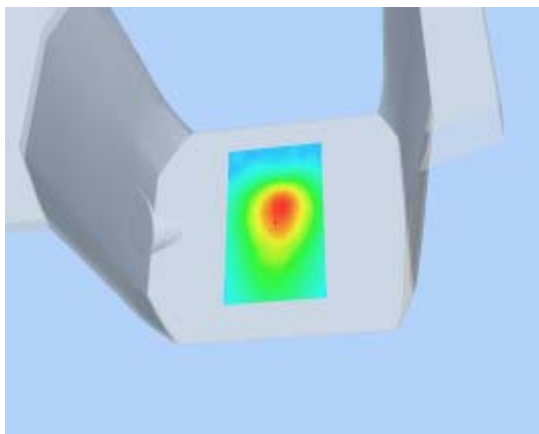
Z Axis Scan

Z (mm)	0.00	4.00	9.00	14.00	19.00	24.00	29.00
SAR (W/Kg)	0.0000	0.0628	0.0394	0.0259	0.0159	0.0123	0.0069

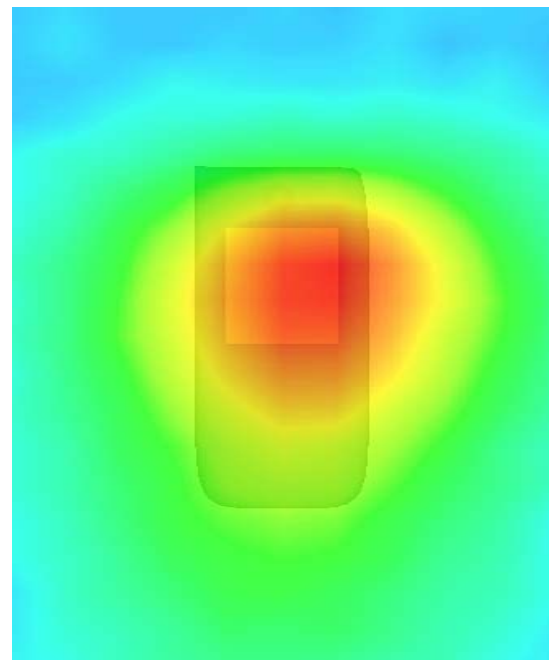
SAR, Z Axis Scan (X = 6, Y = 13)



3D scene shot



Hot spot position



MEASUREMENT 11

Type: Phone measurement (Complete)

Area scan resolution: dx=8mm,dy=8mm

Zoom scan resolution: dx=5mm, dy=5mm, dz=5mm

Date of measurement: 24/2/2010

Measurement duration: 13 minutes 6 seconds

A. Experimental conditions.

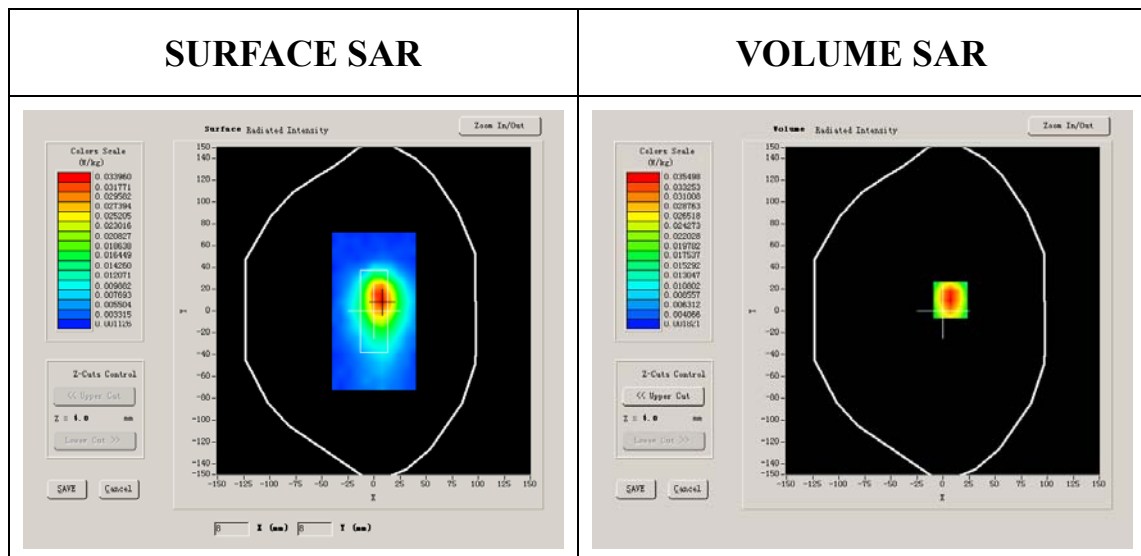
Phantom File	surf_sam_plan.txt
Phantom	Validation plane
Device Position	Body
Band	CDMA850
Channels	Middle
Signal	CDMA

B. SAR Measurement Results

Middle Band SAR (Channel 384):

Frequency (MHz)	836.520020
Relative permittivity (real part)	54.116001
Relative permittivity	21.284550

Conductivity (S/m)	0.989164
Variation (%)	-0.800000
Ambient Temperature:	22.4°C
Liquid Temperature:	22.1°C
ConvF:	28.559,25.681,27.588
Crest factor:	1:1



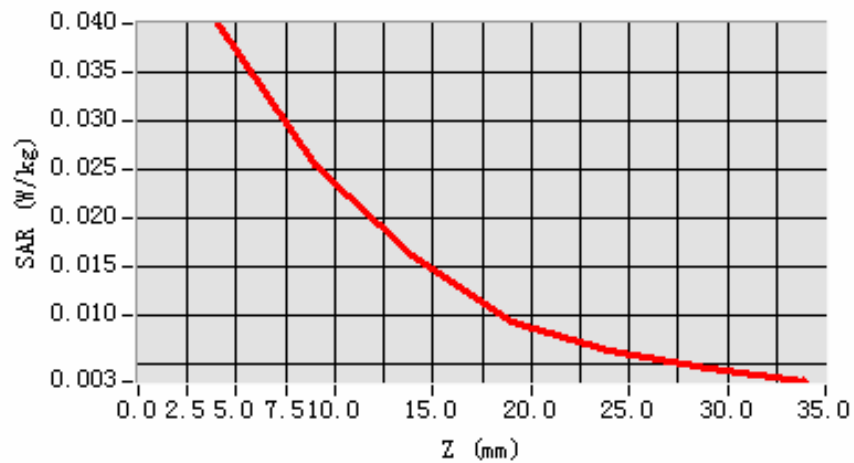
Maximum location: X=7.00, Y=10.00

SAR 10g (W/Kg)	0.022402
SAR 1g (W/Kg)	0.038084

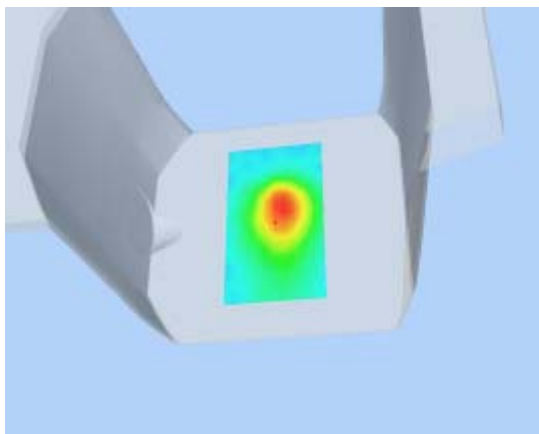
Z Axis Scan

Z (mm)	0.00	4.00	9.00	14.00	19.00	24.00	29.00
SAR (W/Kg)	0.0000	0.0399	0.0253	0.0162	0.0093	0.0063	0.0047

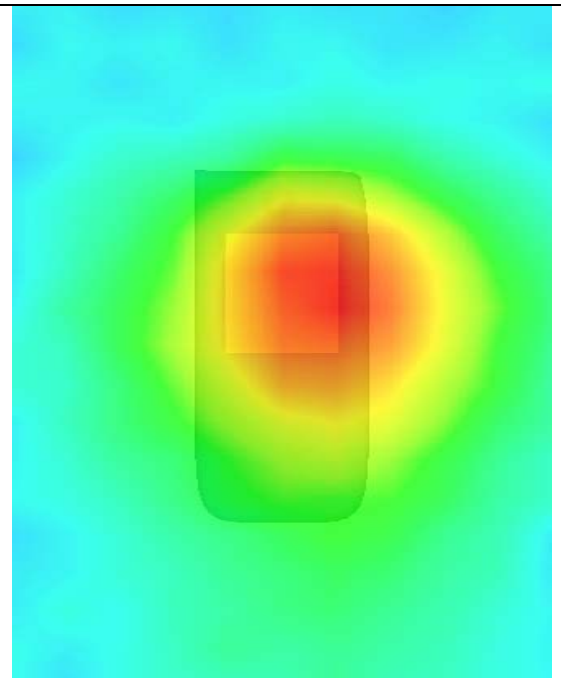
SAR, Z Axis Scan (X = 7, Y = 10)



3D scene shot



Hot spot position



MEASUREMENT 12

Type: Phone measurement (Complete)

Area scan resolution: dx=8mm,dy=8mm

Zoom scan resolution: dx=5mm, dy=5mm, dz=5mm

Date of measurement: 24/2/2010

Measurement duration: 13 minutes 6 seconds

A. Experimental conditions.

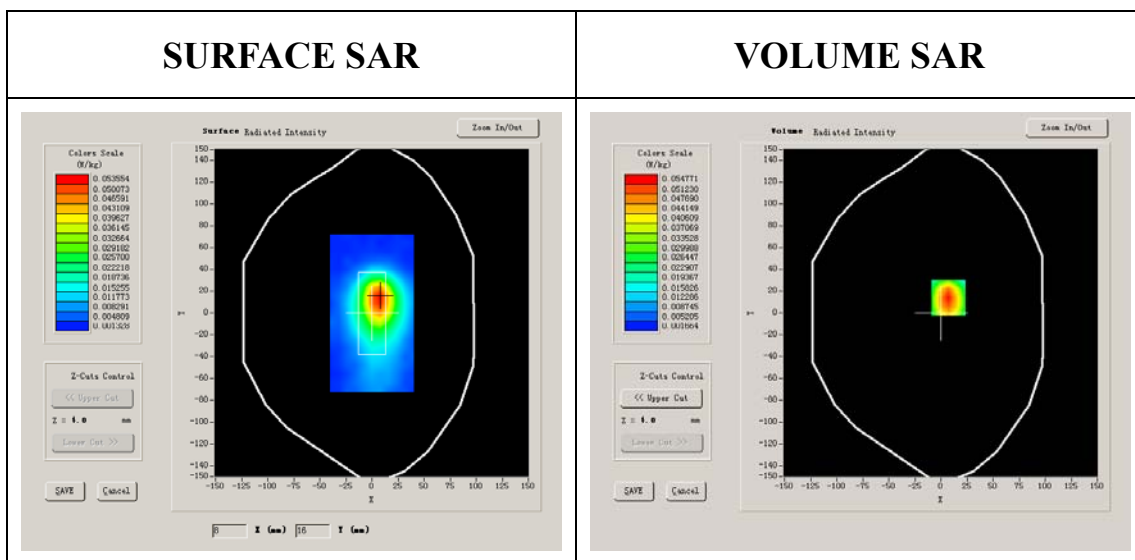
Phantom File	surf_sam_plan.txt
Phantom	Validation plane
Device Position	Body
Band	CDMA850
Channels	High
Signal	CDMA

B. SAR Measurement Results

Higher Band SAR (Channel 777):

Frequency (MHz)	848.309998
Relative permittivity (real part)	54.116001
Relative permittivity	21.284550

Conductivity (S/m)	1.003105
Variation (%)	-0.820000
Ambient Temperature:	22.4°C
Liquid Temperature:	22.1°C
ConvF:	28.559,25.681,27.588
Crest factor:	1:1



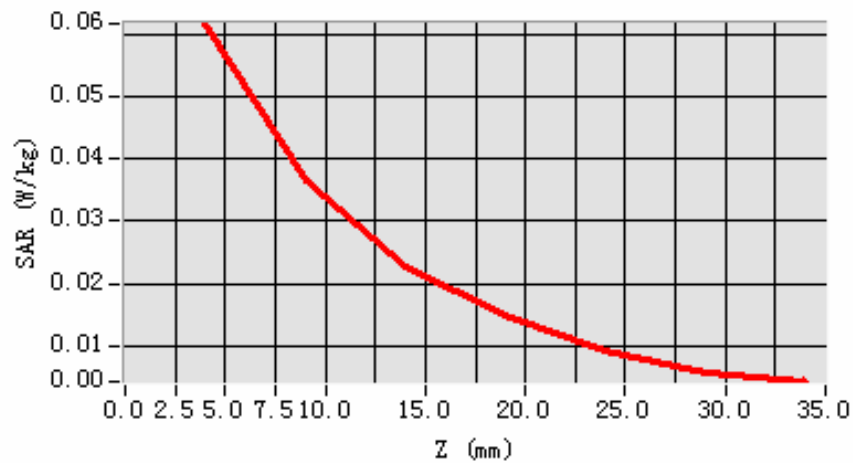
Maximum location: X=7.00, Y=14.00

SAR 10g (W/Kg)	0.033703
SAR 1g (W/Kg)	0.058301

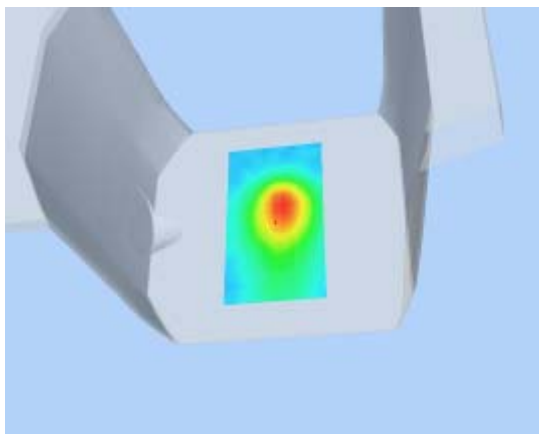
Z Axis Scan

Z (mm)	0.00	4.00	9.00	14.00	19.00	24.00	29.00
SAR (W/Kg)	0.0000	0.0616	0.0364	0.0227	0.0148	0.0093	0.0057

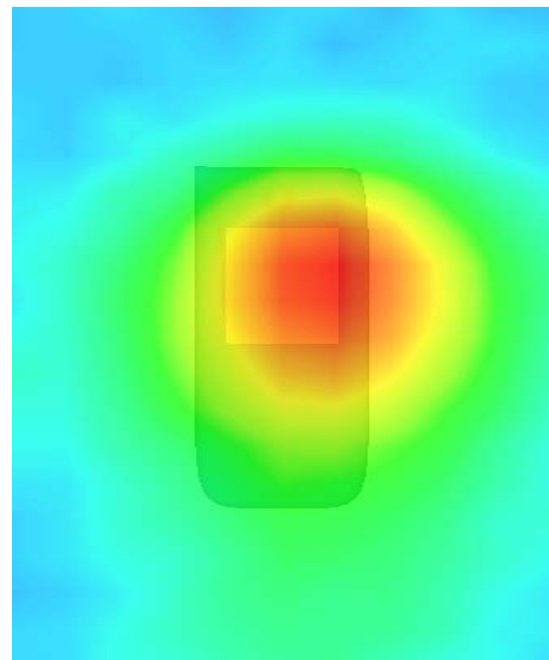
SAR, Z Axis Scan (X = 7, Y = 14)



3D scene shot



Hot spot position



MEASUREMENT 6

Type: Phone measurement (Complete)

Area scan resolution: dx=8mm,dy=8mm

Zoom scan resolution: dx=5mm, dy=5mm, dz=5mm

Date of measurement: 24/2/2010

Measurement duration: 13 minutes 6 seconds

A. Experimental conditions.

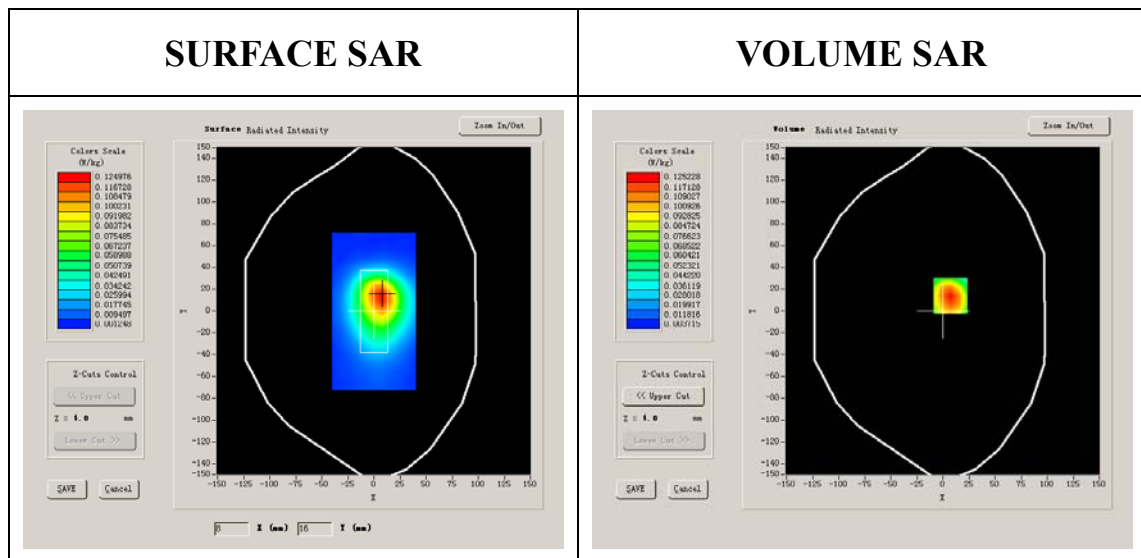
Phantom File	surf_sam_plan.txt
Phantom	Validation plane
Device Position	Body
Band	CDMA850
Channels	High
Signal	EVDO

B. SAR Measurement Results

Higher Band SAR (Channel 777):

Frequency (MHz)	848.309998
Relative permittivity (real part)	54.116001
Relative permittivity	21.284550

Conductivity (S/m)	1.003105
Variation (%)	-0.150000
Ambient Temperature:	22.4°C
Liquid Temperature:	22.1°C
ConvF:	28.559,25.681,27.588
Crest factor:	1:1



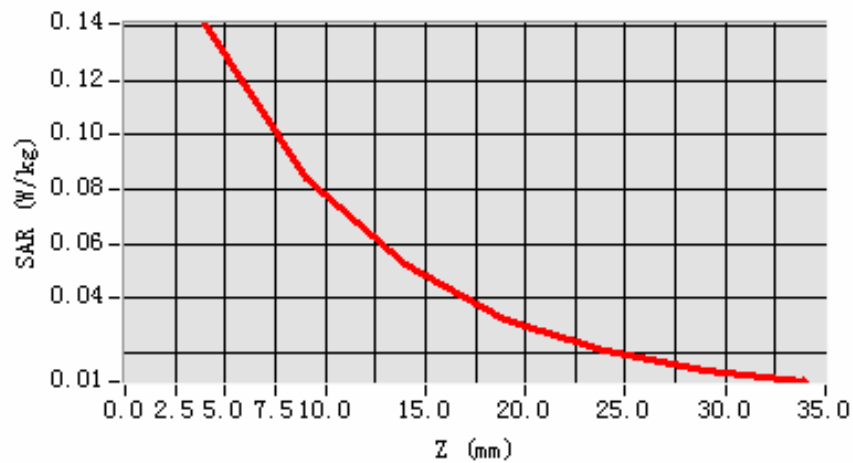
Maximum location: X=7.00, Y=14.00

SAR 10g (W/Kg)	0.096044
SAR 1g (W/Kg)	0.162889

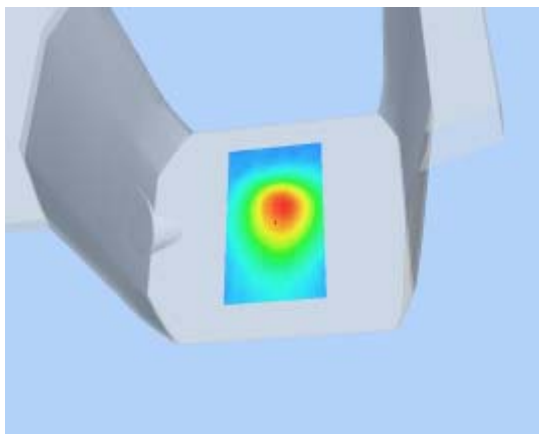
Z Axis Scan

Z (mm)	0.00	4.00	9.00	14.00	19.00	24.00	29.00
SAR (W/Kg)	0.0000	0.1408	0.0844	0.0530	0.0321	0.0208	0.0138

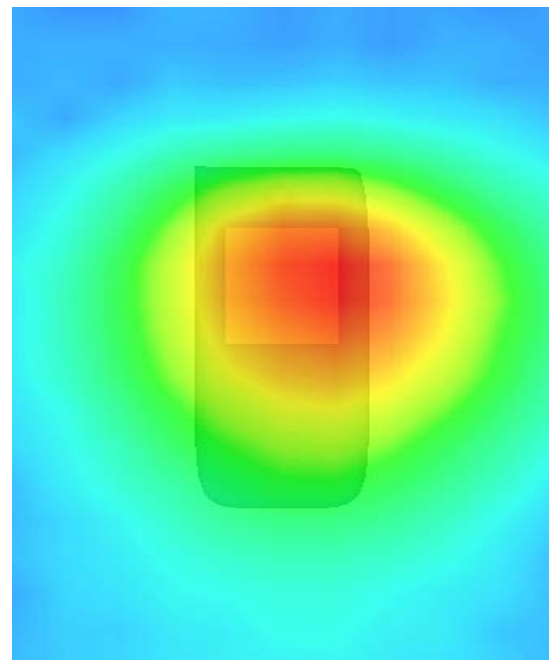
SAR, Z Axis Scan (X = 7, Y = 14)



3D scene shot



Hot spot position



System Performance Check Data(835MHz Body)

Type: Phone measurement (Complete)

Area scan resolution: dx=8mm,dy=8mm

Zoom scan resolution: dx=8mm, dy=8mm, dz=5mm

Date of measurement: 24/2/2010

Measurement duration: 9 minutes 27 seconds

A. Experimental conditions.

Phantom File	surf_sam_plan.txt
Phantom	Validation plane
Device Position	Body
Band	835MHz
Channels	
Signal	CDMA

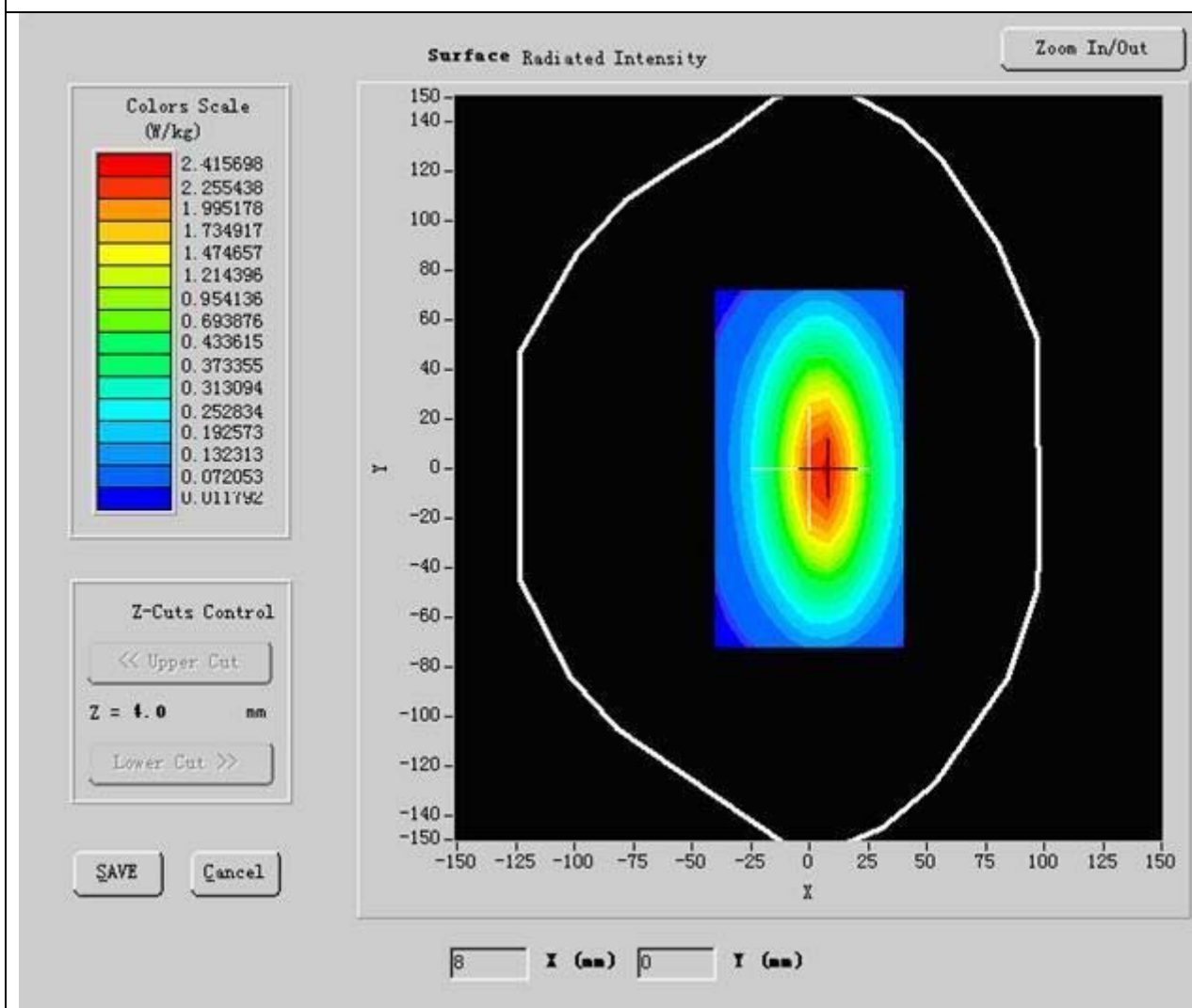
B. SAR Measurement Results

Middle Band SAR:

Frequency (MHz)	835.000000
Relative permittivity (real part)	54.116001
Relative permittivity	15.070000

Conductivity (S/m)	0.989164
Variation (%)	-0.140000
Ambient Temperature:	22.4°C
Liquid Temperature:	22.1°C
ConvF:	28.559,25.681,27.588
Crest factor:	1:1

SURFACE SAR



Maximum location: X=5.00, Y=1.00

SAR 10g (W/Kg)	1.557677
SAR 1g (W/Kg)	2.416617

Z Axis Scan

Z (mm)	0.00	4.00	9.00	14.00	19.00
SAR (W/Kg)	0.0000	2.8536	1.3061	0.6041	0.3211

SAR, Z Axis Scan (X = 5, Y = 1)

