

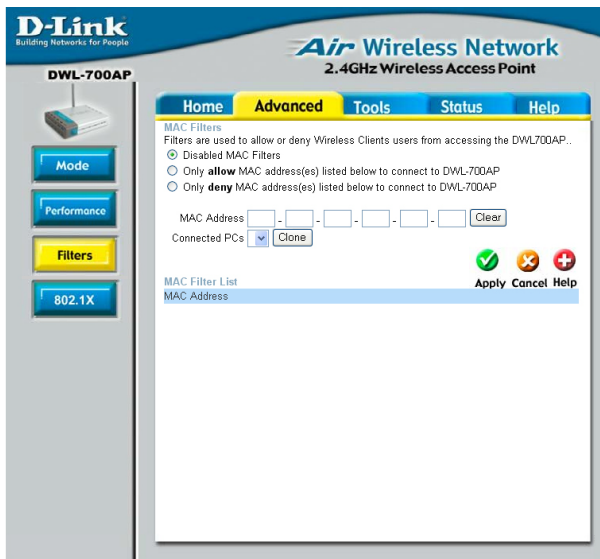
Using the Configuration Menu (continued)

Antenna transmit power: you may wish to select less than 100% power for security reasons, depending its proximity to other networks

Antenna Selection: Select **Left**, **Right** or both (**Diversity**) antenna

Advanced > Filters

Use MAC Filters to allow or deny wireless connection to the DWL-700AP. Select **Disable MAC Filters** (default) to disable this feature. Select **Only allow the MAC address...** or **Only deny the MAC address...** and enter the MAC Address of the selected computer into the field above. Or you can click on the pull-down arrow



Tools > Admin

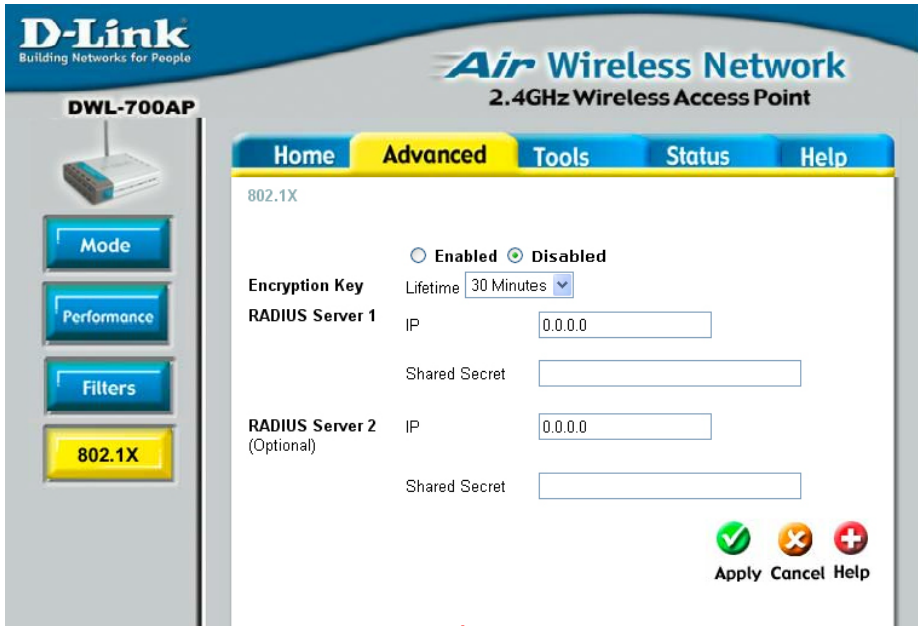
Change your password in this window. It can be up to 14 characters in length. Please keep a copy of your password in a safe place.

Click **Apply**, if you have made any changes.



Using the Configuration Menu (continued)

Advanced > 802.1x



D-Link
Building Networks for People

DWL-700AP

Air Wireless Network
2.4GHz Wireless Access Point

Home **Advanced** Tools Status Help

802.1X

Enabled Disabled

Encryption Key Lifetime: 30 Minutes

RADIUS Server 1

IP: 0.0.0.0

Shared Secret: _____

RADIUS Server 2 (Optional)

IP: 0.0.0.0

Shared Secret: _____

Apply Cancel Help

Disabled is the default selection for 802.1x protocol. Select Enabled to enable it.

Encryption Key: Select the key length, either 64 bits or 128 bits.

Lifetime: Select 5, 15, 30 minutes or 1 or 8 hours, or 1 day for the authentication period. After this period expires, members of the network will have to re-logon to gain access to the network.

Radius Server 1

IP: Enter the IP Address of the Radius Server.

Port: Enter the port number that your Radius Server uses for Authentication. □
The default setting of 1812 is the port setting for many Radius Servers.

Shared Secret: Enter the **Shared Secret**. The shared secret must be the same as the shared secret on your radius server.

Radius Server 2: Optional. If you have a second radius server, you will input the same information as shown above.

Using the Configuration Menu (continued) Tools > System

The current system settings can be saved as a file onto the local hard drive by clicking **Save**. The saved file can be loaded back on the DWL-700AP by clicking **Browse**. When you have selected the settings file, click **Load**. Click **Restore** to return to **Factory Default Settings**.

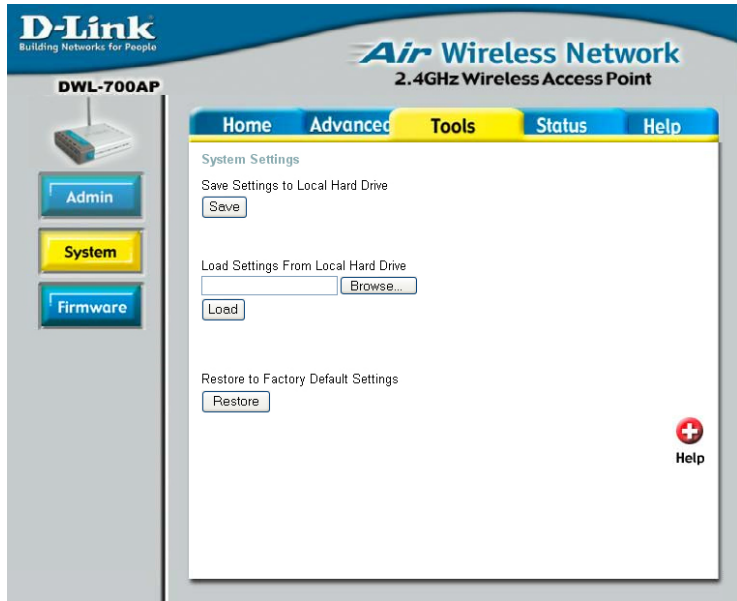


Fig. 5.10

Tools > Firmware

Upgrade the firmware for the Access Point. Click on the link to find upgrades to the firmware on the D-Link website at <http://support.dlink.com>. After you have downloaded a firmware upgrade to your local drive, click **Browse**. Select the firmware and click **Apply** to complete the upgrade.

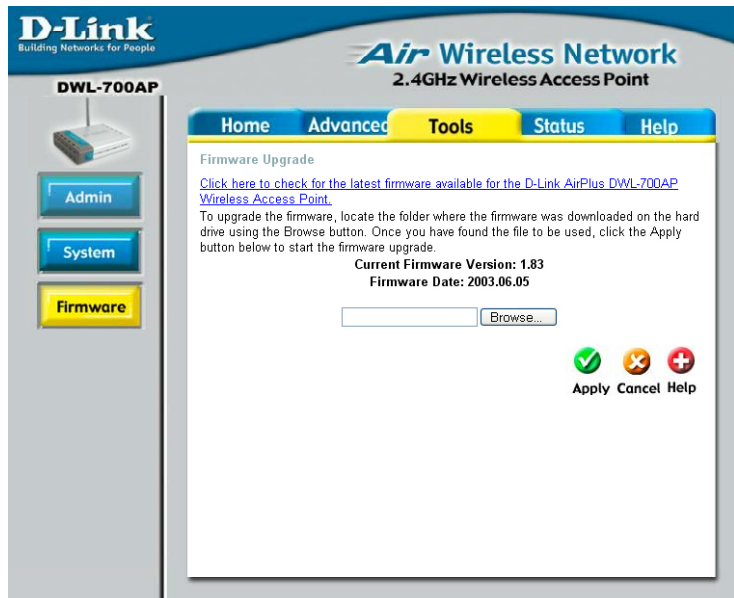


Fig. 5.11