

# On-Screen Keyboard

In order to input information, you must use the DSM-510 keyboard interface. When information is needed within an input box, click the **MENU** key on your remote control and select the Keyboard Input option.

Use the **selection arrows** and the **ENTER** button to select from Numbers, Lower (lower case alphabet), Upper (upper case alphabet), or Symbol. The **SHIFT** key on your remote control can also toggle between these options if pressed repeatedly. Once you've selected your character type, use the **selection arrows** on your remote control to select the characters you want to input. When you have finished, select **OK**.



# Network Settings

**Wired LAN Settings:** If you want to connect through an Ethernet cable, then select this option.

Select this option if you are using the antenna to connect wirelessly to a server.

## Wireless LAN Settings:



## Wired LAN Settings

**Get IP Address:** Clicking this button will retrieve the IP address automatically (Recommended).

Input the IP Address.

### IP Address:

Input the Subnet Mask.

### Subnet Mask:

Input the Default gateway.

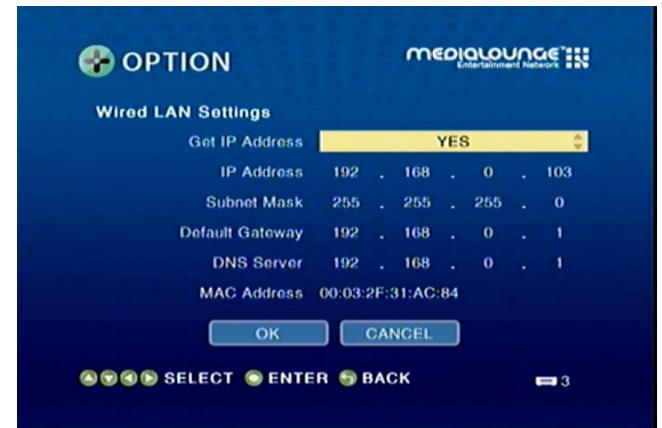
### Default Gateway:

In case a DNS server exists in the network, input the IP Address of the DNS server.

### DNS Server:

Displays the MAC Address.

### MAC Address:



## Wireless LAN Settings

- Scan for wireless LANs:** Click this button to search for wireless LANs, and select your Access Point.
- Manual Configuration:** Click this button to manually connect to the network (see the following screen).
- Windows Connect Now:** Click this option if you want to use Windows Connect Now® to configure your device's wireless connection. If you want to configure your device's wireless connection, please continue to page 37.



## Wireless LAN Profile Settings

To exchange connection priorities, click the **MENU** button on your remote control.

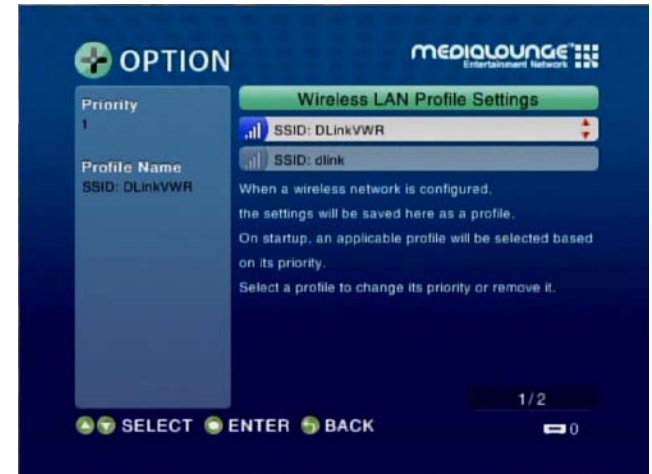
**Set to Exchange:** Pick the wireless access point that you want to exchange connection priorities.

**Exchange:** This option will initialize the move between wireless access points.

This will remove the wireless access point profile from the list.

**Remove:**

**Note:** In order for the exchange to take effect, you must power cycle the DSM-510 (meaning you must turn off the DSM-510 and turn it back on again).



## Manual Configuration

**MODE:** Choose between **Ad-Hoc** or **Infrastructure**.

**Ad-Hoc** should be selected when the DSM-510 is directly connected to other wireless network devices without an access point.

**Infrastructure** should be selected when the DSM-510 is connected to the wireless LAN where an access point device exists. (Recommended)

Displays the Wireless LAN Type as 802.11b/g.

**Wireless LAN Type:**

Using the software keyboard input the SSID, which should be used by the

**SSID:** existing wireless network.

Select between None, WEP, or WPA.

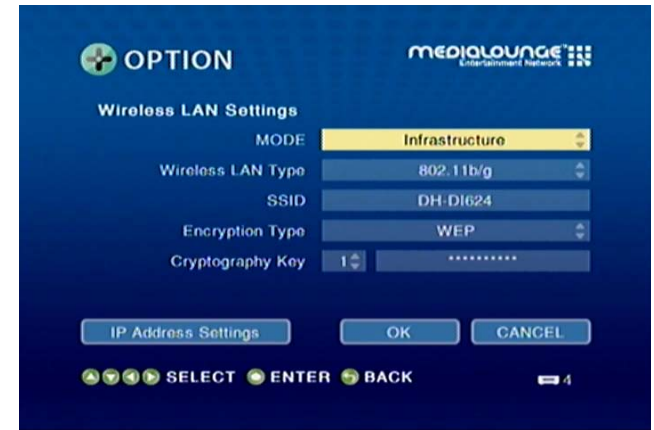
**Encryption Type:**

When WEP or WPA is selected in Encryption Type, two boxes will appear (the **Index Selection** box and the **Cryptography Key** input box).

**Cryptography Key or Network Passcode:**

**Index Selection** box allows you to select an Index number from 1 to 4. Each index number saves a Cryptography Key.

**Cryptography Key** allows you to enter the WEP or WPA key used in the existing wireless network.



# TV Settings

**Output Type:** Select between Digital (HDMI) and Analog (Composite).

**Screen Size:** Select between 4:3 or 16:9.

**Resolution:** If the output type is set to Digital (HDMI), select between Auto, 480i, 480p, 1080i, and 720p. If the output type you selected is Analog (Composite), select between 480i, 480p, 1080i, and 720p.



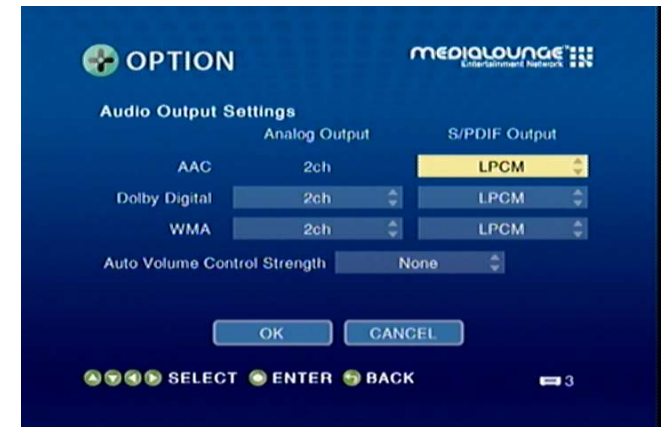
# Audio Output Settings

**AAC:** You can choose to output audio in LPCM or have it turned off to the digital output.

**Dolby Digital:** You can choose to output audio in 2 channel or 5.1 for analog. You can also change the digital output from LPCM to Dolby Digital or off.

**WMA:** You can choose to output audio in 2 channel or 5.1 for analog. You can also change the digital output from LPCM to off.

**Auto Volume Control Strength:** There are three variable settings to select from: Small, Moderate, and Strong. These control the audio output depending on the strength of the media file.



# Language Settings

Select the available language that best fits your interface.

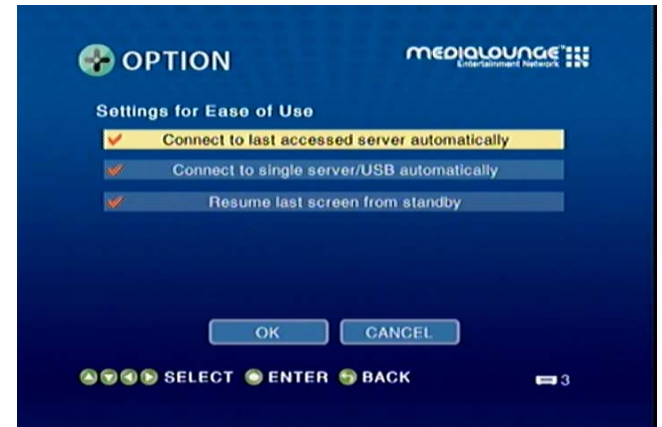


# Settings for Ease of Use

**Connect to last accessed server automatically:** On startup your DSM-510 will try to access the last media source it was connected to.

**Connect to single server/USB automatically:** If only one media source or USB is detected the media server will connect to it automatically.

**Resume last screen from standby:** After turning on the unit, the last screen accessed will be displayed.



# Reset Settings

You can reset the DSM-510's settings from Options and select Reset Settings. On the following screen, select **RESET**.



To perform a hard reset, please locate the pinhole reset button on the bottom edge of the device. Insert a paperclip while the unit is powered on and hold it in for 10 seconds. After 10 seconds, remove the paperclip from the pinhole reset button.



# Software Update

**Update over Internet:** Select this option to update the DSM-510 through an Internet connection. Select **OK** and then select **Next** for the DSM-510 to check for an update. If an update is available, you will be able to click **Next** and the DSM-510 will download and install the updated software.

**Update from USB:** Select this option to update the DSM-510 through a USB device. Download the USB Update Software from <http://support.dlink.com>. Extract and copy the update folder from your PC onto your USB drive. Insert the USB drive into the DSM-510 and select **Next**. If an update is found, you will be able to select **Next** and continue updating your DSM-510 software.



# Device Information

This screen will display information about the DSM-510.

**Device Name:** Displays the name of the device.

**Version:** This will show the current version of the software that the device is using.

**MAC Address:** Shows the Wired and Wireless MAC address of the DSM-510.



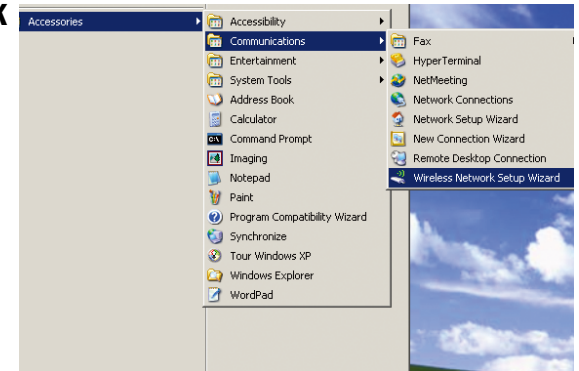


# Windows® Connect Now for XP

If you already have wireless settings configured on your PC, instead of using the Intel® Viiv™ setup , you can use Windows® Connect Now (WCN) to configure the wireless settings on your DSM-510.

**Note:** WCN is only available on PCs running Windows® Vista and Windows® XP with Service Pack 2 installed. If you are running Windows® Vista on your PC, continue to page 44.

Go to **Start > All Programs > Accessories > Communications** and click **Wireless Network Setup Wizard**.



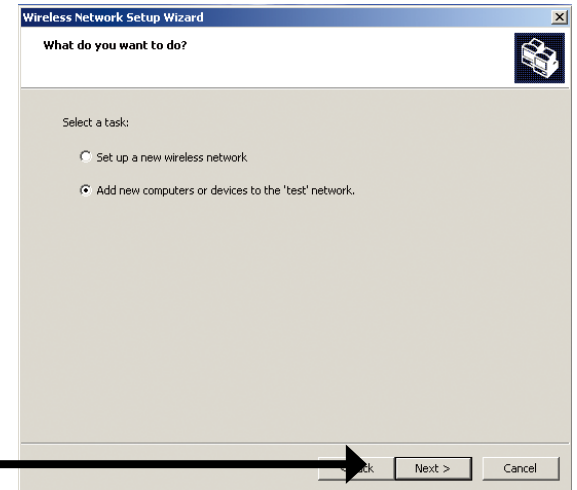
Your system will display the Setup Wizard Welcome screen. Click **Next** to continue.



Click **Next**

Select to add a new device to your existing wireless network and click **Next** to continue.

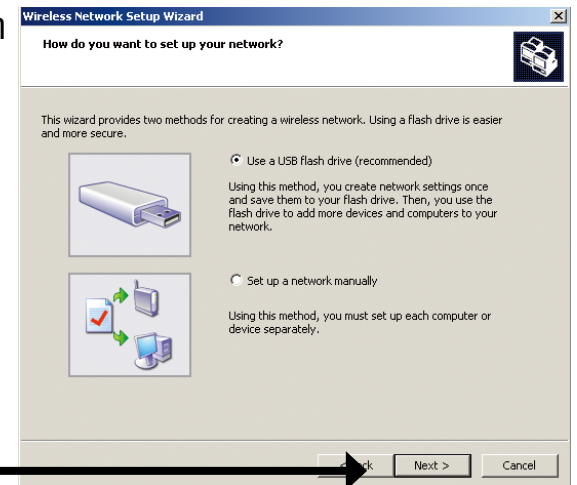
Click **Next**



The wizard provides two methods for setting up a wireless network. Select to use a USB flash drive to save your wireless network settings and click **Next** to continue.

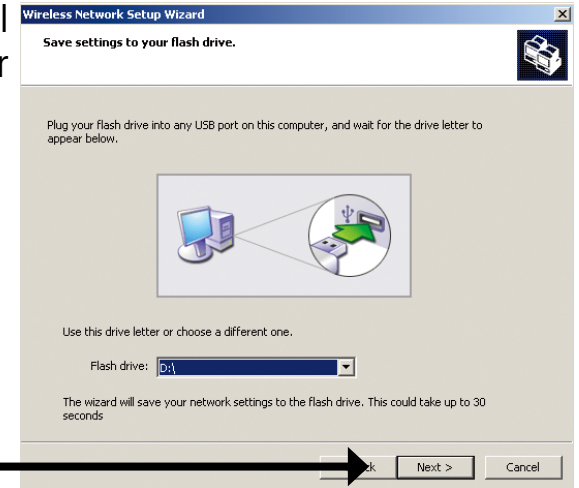
**Note:** Using a USB flash drive is recommended.

Click **Next**



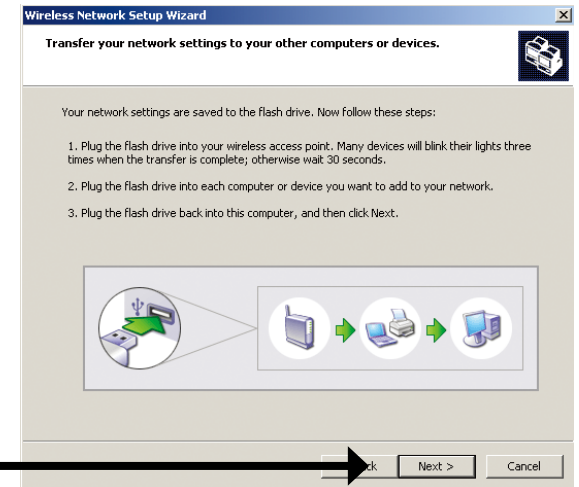
Plug your flash drive into a USB port on this computer. The drive letter will appear in the pull down menu. You can choose to use this drive or select another drive. Click **Next** to save your wireless settings to the USB flash drive. This may take a few seconds.

Click **Next**



This screen will appear when the wireless settings have been saved to the USB flash drive.

Click **Next**



Next, remove the USB Flash Drive from your PC and insert into the USB port on the back panel of the DSM-510.

From the device, select the option **Windows Connect Now**. Click **OK**.



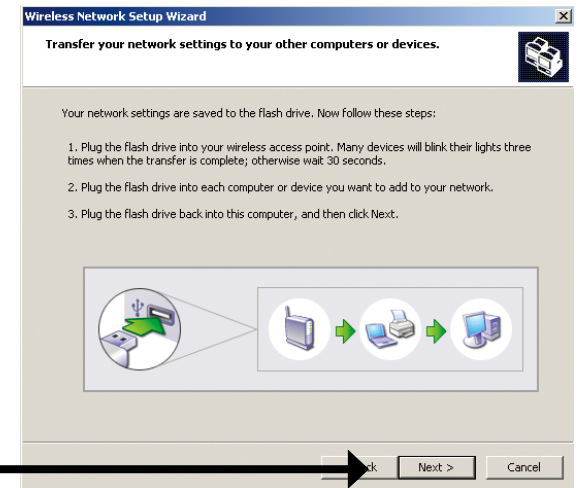
The following screen will appear, manually configure your Wireless LAN settings. After you've completed your settings, click **OK**.



The following screen confirms that your wireless settings have been applied. Click **OK**.



Next, return to your PC and remove the USB Flash Drive from the DSM-510 and insert it back into the USB port on your PC. Click **Next** to continue.



Click **Next**

Wireless configuration using WCN is now complete. The setup wizard will display the devices that have been setup with your wireless network. Click **Finish**.

Click **Finish**



**Windows® Connect Now has been configured for Windows® XP/2000!**

# Windows® Connect Now for Vista

On your Windows® Vista PC, open up your Control Panel and select the **Network and Internet** option.



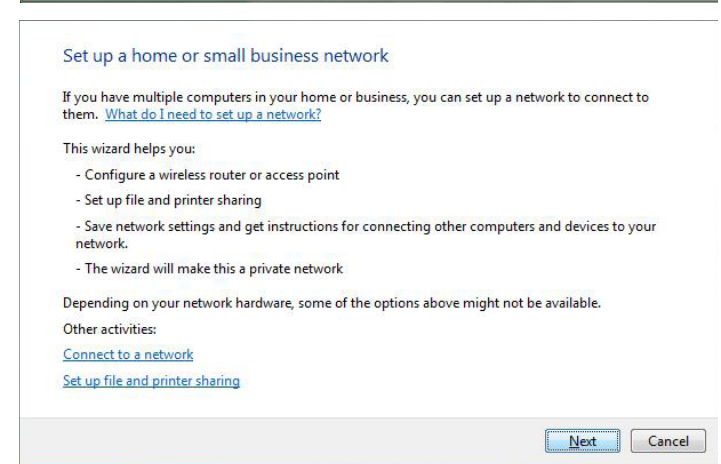
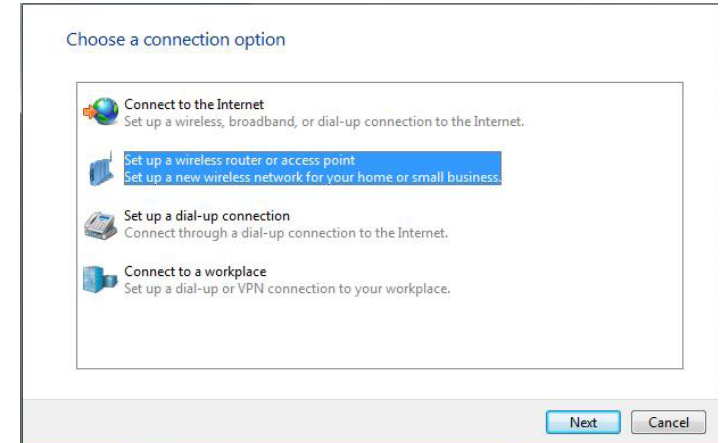
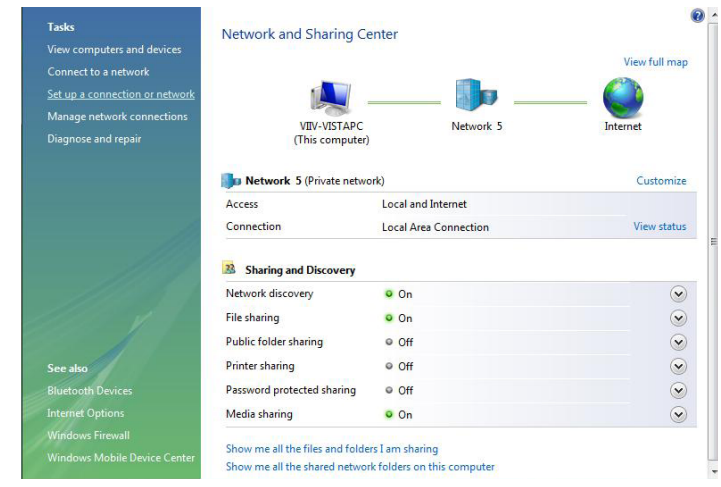
Next, select the **Network and Sharing Center** option.



On the following screen, select **Set up a connection or network**.

The choose a connection option window will appear. Select the **Set up a wireless router or access point** option and click **Next**.

The following screen offers more information, click **Next** to begin the wizard.

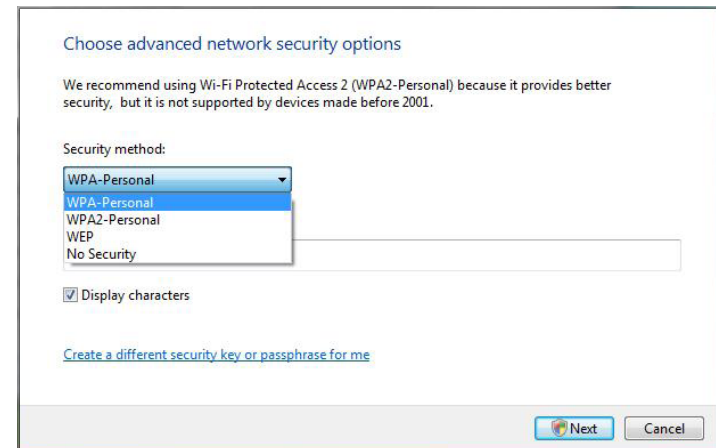
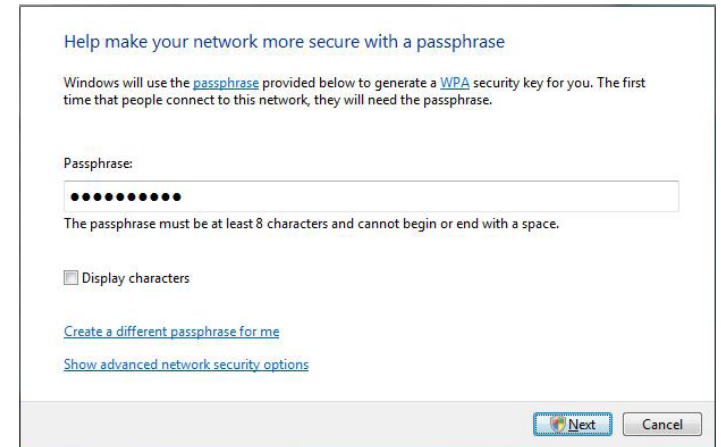
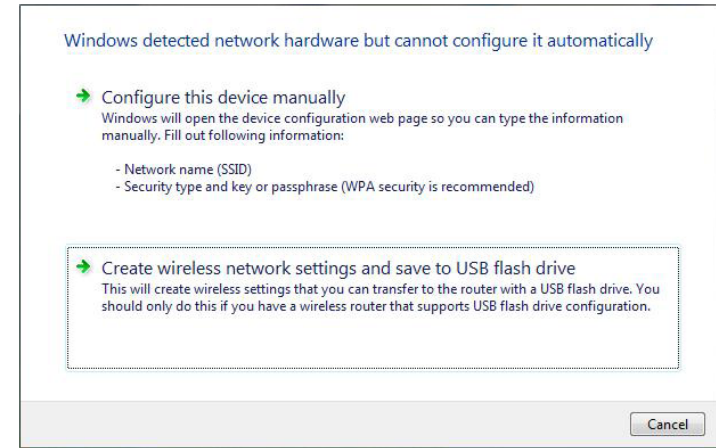




Select the **Create wireless network settings and save to USB flash drive** option.

Enter a passphrase to secure your network and click **Next**.

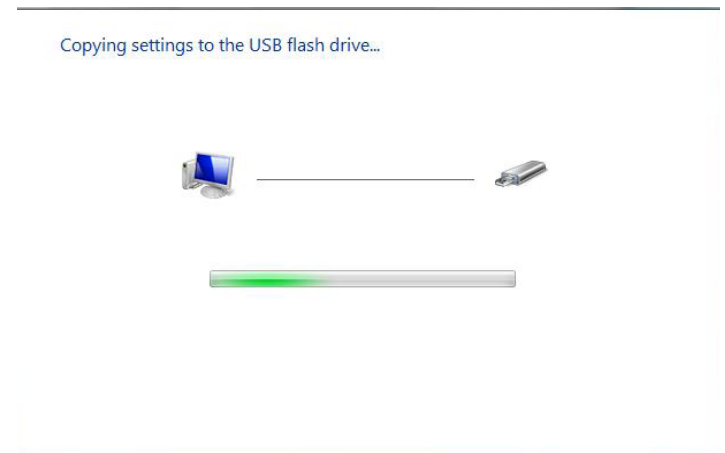
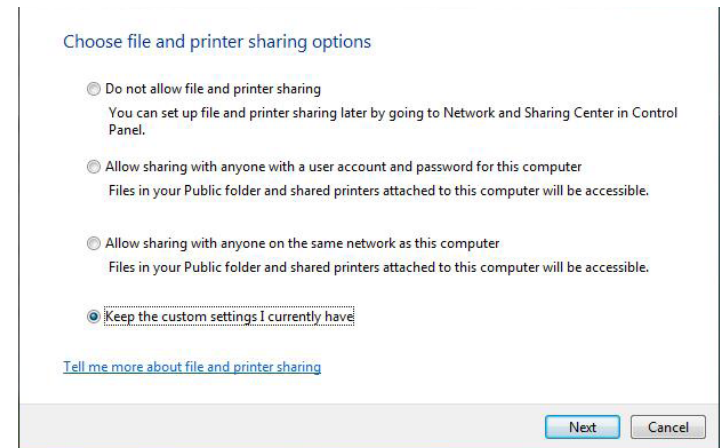
The following screen will provide you with a list of network security options. Select the best option and click **Next** to continue.



The choose file and printer sharing options window will appear, select the option to keep the custom setting you already have, and click **Next**.

Plug your flash drive into a USB port on your computer. The driver letter will appear in the pull down menu. You can choose to use the drive or select another drive. Click **Next** to save your wireless settings to the USB flash drive.

The following screen will begin saving the wireless settings to your USB flash drive. This may take a few seconds.




This screen will appear when the wireless settings have been saved to the USB flash drive.

Remove the USB flash drive from your PC and insert it into the USB port on the front panel of the DSM-510.

To add a device or computer, follow these instructions

- 1 Remove the USB flash drive from this computer.
- 2 Insert the USB flash drive into a USB port on the device or the computer. (Computers must be running Windows XP or Windows Vista.)
- 3 For devices, follow the instructions in the information that came with the device, or on the LCD of the device, if applicable.

[For more detailed instructions, click here.](#)



Repeat steps 2 and 3 for each device or computer that you want to add.

Close

From the device, select the option **Windows Connect Now**. Click **OK**.

**OPTION** **MEDIA LOUNGE**  
Entertainment Network

**Wireless LAN Settings**

Select configuration method for wireless LAN

- Scan for wireless LANs
- Manual Configuration
- Windows Connect Now**
- Wireless LAN Profile Settings

OK CANCEL

SELECT ENTER BACK

The following screen will appear after you've verified your settings. Click **OK** to continue.



The following screen confirms that your wireless settings have been applied. Click **OK**.



**Windows® Connect Now has been configured for Windows® Vista!**

# Operating the DSM-510

**VIDEO:** Click **ENTER** on your remote control to show the Video Contents selection screen.

**MUSIC:** Click **ENTER** on your remote control to show the Music Contents selection screen.

**PHOTO:** Click **ENTER** on your remote control to show the Photo Contents selection screen.

**SERVER:** Click **ENTER** on your remote control to show the Server selection screen.

Click **ENTER** on your remote control to show the Connected USB Device List.

**USB:** Click **ENTER** on your remote control to show the Options screen.

**OPTION:**



**Note:** To directly access this screen, press the **HOME** button on the remote control.

**Note:** If the Intel® Viiv™ technology verified PC is powered down, selecting the Intel® Viiv™ Media Server will power it back up to provide access to music, photo, video, and the Intel® Viiv™ Zone.

## Menu Basics

The DSM-510 uses an on-screen menu interface. As you move through the menus, you will use the **selection arrows** on the remote control to move up, down, right and left. The highlight bar moves from item to item as you press the selection arrows. You will need to press **ENTER** on the remote control to access the item. The **Page Up** and **Page Down** buttons can be used to navigate through the track list one page at a time. Once you are in a particular category, you can press the **MENU** button on your remote control to access the pulldown menu within that category.

# Music

## Music Quality

Your music listening experience on the media player depends upon the quality of your digital music files on your PC. Avoid quality settings below 48kbps as they create low quality audio. For CD quality music, rip your MP3s at 128kbps or higher, with a sample rate of 44.1kHz.

## Supported Music Formats

The following music file formats are supported:

- **MP3** (up to 320 kbps)  
MPEG-1, Layer 3 Audio file -The standard Internet music file format. This is the most commonly used audio format.
- **WMA** (Does not support WMA lossless)  
Windows Media Audio file - Supported by the Microsoft Windows Media player and some music jukebox programs. Also supports WMDRM protected WMA files downloaded from online services and WMA Pro.
- **WAV**  
WAV was developed by Microsoft and IBM. WAV sound files end in .wav and are compatible with Windows applications supporting audio.
- **AIFF** (AIFF files must be encoded in PCM format only.)  
AIFF (Audio Interchange File Format) was developed by Apple Computers and is the standard audio format for Macintosh computers. File extensions are .AIF or .IEF.
- **MPEG 1 and MPEG 2**  
Moving Pictures Experts Group created standards for compressing audio and video. Audio uses the file extension .mp3.
- **OGG Vorbis**  
Open source audio format. Uses the file extension .ogg.



## Accessing Music

Select the **MUSIC** category from the HOME page or click the **MUSIC** button on the remote control. Select a category, by using the **down arrow** and **up arrow** on the remote control to navigate (choose from Playlist, Genre, Artist, Album, All Music, Folders, or Favorites). Select your option by clicking **ENTER**. If you want to play all of the tracks within the category you selected, simply press the **Play** button. If you want to play just one track, use the **up arrow** and **down arrow** buttons to navigate one track at a time. After the appropriate track is highlighted, press **ENTER** on the remote control. The **Page Up** and **Page Down** buttons can be used to navigate through the track list one page at a time.

## Playing a Track

Once you enter the music menu, there are several ways that you can view tracks. You can view Playlist, Genre, Artist, Album, All Music, Folders, or Favorites.

If you select to view All Music (see the following menu), then use the **selection arrows** to navigate to the track you wish to play. Once you have located the appropriate track, highlight it and press **ENTER** or **Play** on the remote control. The track will begin playing on your stereo or television speakers.

To play all of the tracks visible in this category, simply press **Play**.



## Playing a Group of Songs

Select a music folder and press the **Play** button on the remote control, all of the songs within the selected folder will be played. You can highlight a genre of music and all files that are associated with that genre will be displayed. Genre categories are defined when an audio file is created.

You can play songs within a folder from a specified track forward. For instance, if you have a folder with ten tracks and select Track 3, clicking on the **Play** button will play tracks 3 through 10.

## Creating Music Playlists using 3rd Party Software

Use your favorite music software on your PC to create music playlists. A playlist allows you to specify exactly what tracks to play and in what order to play them. For example, create a “favorites” playlist and just listen to your favorite tracks.

The DSM-510 will play tracks from playlists you create on your computer. The media player supports playlists in three standard formats:

- **m3u** Playlist File
- **pls** Playlist File
- **wpl** Playlist File

Software for playing music on your PC can be used to create playlists. **WinAmp™** and Microsoft Windows® Media Player™ are two examples.



## Playing a Playlist

To play all the tracks in a playlist, select the playlist name and press the **Play** button. All tracks will be played in the playlist.



## Adding Favorites

Click the **MENU** button on your remote control and you should see the Add Favorite option. Highlight the Add Favorite option and press **ENTER** (see the following image).

Select the Favorites folder you want to add this Playlist, Genre, Artist, Album, or Folder to and click **OK**.



## Browsing for Music

There are many ways to browse for a music track. For example, let's use the following music file located in the following shared location:

*c:\Documents and Settings\Administrator\My Documents\My Music\Beethoven\Ode to joy.mp3*

*To browse for this track in the track list:*

1. Select **All Music**
2. Highlight **Ode to joy**

*To browse by artist:*

1. Select **Artist**
2. Select **Ludwig van Beethoven**
3. Select **Beethoven**
4. Highlight **Ode to joy**

*To browse by album:*

1. Select **Album**
2. Select **Beethoven**
3. Highlight **Ode to joy**

*To browse by genre:*

1. Select **Genre**
2. Select **Classical**
3. Select **Ludwig van Beethoven**
4. Select **Beethoven**
5. Highlight **Ode to joy**

*To browse by folder:*

1. Select **Folders**
2. Select **My Music**
3. Select **Beethoven**
4. Select **Ode to joy**

**Track:** *Ode to joy.mp3*

**Artist:** *Ludwig van Beethoven*

**Album:** *Beethoven*





**Genre:** *Classical*

## Controlling Music Playback


Your DSM-510 works just like a stereo or CD player. Controlling your music playback will be an easy and natural experience. Use the remote to **Play**, **Pause**, or **Stop** music. You can also use your remote control to **Fast Forward** or **Fast Reverse** the track. Press the **Previous** and **Next** buttons to skip to the previous or next track.

### Repeat

You can turn on the repeat function to continuously play individual tracks, playlists, or groups of tracks within a folder.

To repeat a track or a group of tracks, press **REPEAT** on the remote control. When the Repeat icon appears in the lower right hand corner  , then you  in the repeat current group of tracks mode. Press **REPEAT** for the second time and the Repeat One icon will appear in the lower right hand corner  , this will repeat the track that  currently playing.

### Shuffle

When you are playing a group of tracks, you can randomize the play order by pressing the **SHUFFLE** button on the remote control. You will see the shuffle icon in the lower right hand corner light up  .



## Time Search

You can search to a specific time in a music file by using the Time Search function. While your music is playing, click the **MENU** button on your remote control. Navigate to the Time Search option and press **ENTER** (see the following image). Using your remote control, enter the minutes and seconds you want the player to start from, and click **OK**.

**Note:** The Time Search function may not be supported outside the Intel® Viiv™ Server.



# Podcasts

After selecting the Music option from the DSM-510 main menu, a new menu will appear. Locate and select the **Podcast** option.



To add or import a podcast stream, use your remote control and select the **MENU** button.



## Importing Podcasts

You should see a menu that appears over the podcast section.

- (1) To import your Podcasts you will need a USB thumb drive. You can either export your podcasts from iTunes software or create your own list in notepad on your pc. If you are manually creating your list please use the following format.

```
<?xml version="1.0" encoding="UTF-8"?>
<opml version="1.0">
<head>
</head>
<body>
<outline type="rss" xmlUrl=" http://www.dlinktv.com/podcast" />
<outline type="rss" xmlUrl=" http://www.yourpodcasthere/url" />
</body>
</opml>
```

- (2) Once you have added your URL's to the notepad document, save the file as **Podcasts.opml**.

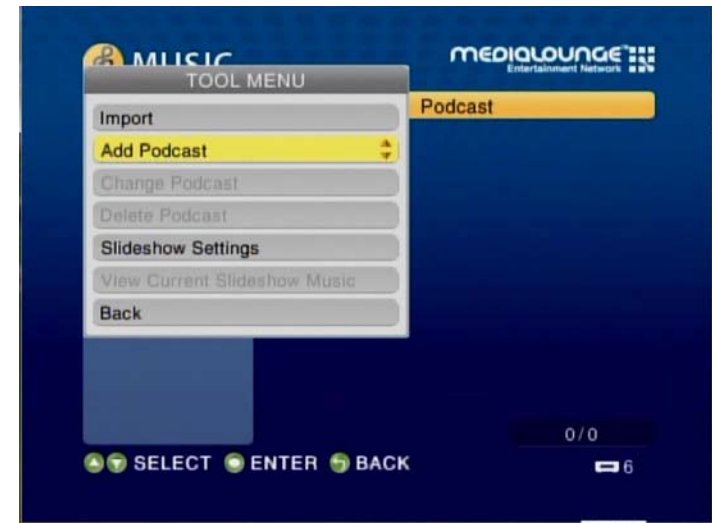
**Note:** Make sure that the save as type is set to All Files, and then click **Save**.

- (3) Next, copy your Podcasts.opml document to your USB thumb drive. Insert your USB thumb drive into the front panel of the DSM-510.
- (4) Next, go to **Music > Podcasts**. Select **MENU** on your remote control, locate the Import option and press **ENTER** on your remote control..
- (5) The DSM-510 will now search your USB drive for the Podcasts.opml file and save the links into your device.
- (6) Once the links have been loaded you may remove your USB thumb drive and access your Podcast stations.



## Adding Podcasts

Using your remote control, toggle down to the option **Add Podcast** and select the remote's **ENTER** button.



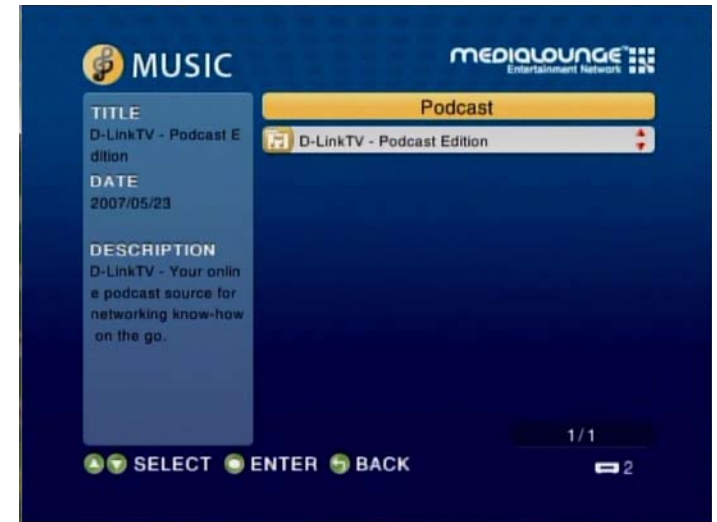
On the following screen, enter the URL of the podcast stream by accessing the on-screen keyboard option.



Using your remote control, toggle to the appropriate letter and press **ENTER**. After you've completed entering the URL, click **OK**.



The podcast stream should now appear on the podcast main menu screen. Select your stream by clicking the remote's **ENTER** button.

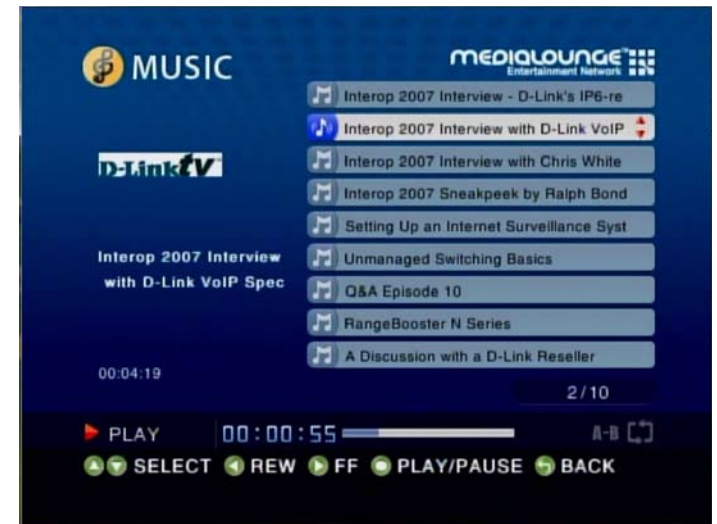




The following screen will showcase all available streams. Use your remote control to toggle and select your option.



After a selection has been made, the file will play.



# Photo

## Supported Photo Formats

The following photo file formats are supported:

- **BMP** (non-compressed)  
Windows bitmap file. Widely used in Microsoft Windows for pictures and backgrounds.
- **JPEG** (grayscale, RGB, YCbCy)  
(Does not support CMYK, YCCK.)  
The JPEG format is the Internet and digital photo format standard used by most digital cameras.
- **GIF**  
(Animated GIF's are not supported)  
Older format still widely available on the internet for photos, web pages, and clip art.
- **PNG** (Non-alpha channel only)  
Portable Network Graphics standard created in response to limitations in the GIF file format.
- **TIFF** (RGB)  
(Does not support CMYK, YMC, YMCK, KCMY)  
Tagged Image File Format is a raster file format.



Select the **PHOTO** category from the Home page or click the **PHOTO** button on the remote control. Select a category, by using the **down arrow** and **up arrow** on the remote control to navigate (choose between All Pictures, Album, or Favorites). Select your category by clicking **ENTER**. After the appropriate picture is highlighted, press **ENTER**, or **Play** to start a slideshow, on the remote control. The **Page Up** and **Page Down** buttons can be used to navigate through the picture list one page at a time.

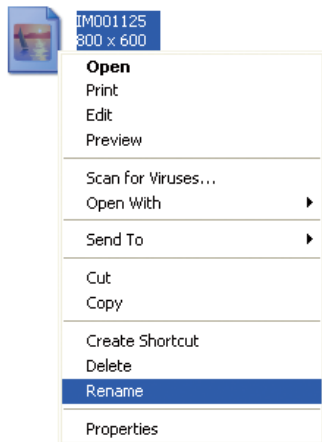
## Organizing Photo Albums

Unlike music files, photos contain little information about their content. Therefore, photos are organized by their filename and by the folder they are in. Many digital cameras will organize your photos into folders when you connect and unload them to your PC. Each time you dock or connect, a new folder is created using the current date and time, and all photos are copied into that folder.

To simplify browsing on your DSM-510, you can create folders on your PC. For instance, create a folder in the My Pictures directory called **Vacation** and copy all of your vacation photos into it. Your DSM-510 will show the **Vacation** folder. To play a slideshow of the folder, highlight it and press the **Play** button. To view a list of photos in the folder, highlight it and press the **right arrow** button.

You can give your photos meaningful names by renaming the files on the PC. Most digital cameras number photos sequentially. For example, rename the photo **IM001125.jpg** to **sunset.jpg** on your PC. The photo will be displayed as **sunset.jpg** on your DSM-510\*.

**Right-click** on the file and select Rename.



If the file extension does not appear as part of the name displayed when you select rename, then it is not necessary to enter the file extension (.jpg) at the end of the filename. To rename IM001125.jpg to sunset.jpg, type in **sunset** and hit Enter on your computer's keyboard.



**sunset**

If the file extension appears as part of the name when you select rename, then be sure to include the extension when renaming the file. To rename IM001125.jpg to sunset.jpg, type in **sunset.jpg** and hit Enter on your computer's keyboard.

You can create as many folders as you need. Create a folder for the year, then create folders inside for each of the months, and then folders in each month for special occasions (birthday, vacation, holidays, etc...).

*\*Folder creation and renaming files must be done on the PC via standard Windows® procedures.*