

USER MANUAL

DSL-2650U

VERSION 1.0



D-Link[®]

BROADBAND

FCC Notices

This device complies with Part 15 of the FCC Rules. Operation is subject to the following two conditions: (1) this device may not cause harmful interference, and (2) this device must accept any interference received, including interference that may cause undesired operation.

CAUTION: Change or modification not expressly approved by the party responsible for compliance could void the user's authority to operate this equipment.

This equipment has been tested and found to comply with the limits for a Class B digital device, pursuant to Part 15 of the FCC Rules. These limits are designed to provide reasonable protection against harmful interference in a residential installation. This equipment generates, uses and can radiate radio frequency energy and, if not installed and used in accordance with the instructions, may cause harmful interference to radio communications. However, there is no guarantee that interference will not occur in a particular installation. If this equipment does cause harmful interference to radio or television reception, which can be determined by turning the equipment off and on, the user is encouraged to try to correct the interference by one or more of the following measures:

- Reorient or relocate the receiving antenna.
- Increase the separation between the equipment and receiver.
- Connect the equipment into an outlet on a circuit different from that to which the receiver is connected.
- Consult the dealer or an experienced radio/TV technician for help.

CAUTION: Any changes or modifications not expressly approved by the grantee of this device could void the user's authority to operate the equipment.

RF exposure warning:

The equipment complies with FCC RF exposure limits set forth for an uncontrolled environment. The equipment must not be co-located or operating in conjunction with any other antenna or transmitter.

Table of Contents

PACKAGE CONTENTS	1	<i>Default Gateway</i>	61
SYSTEM REQUIREMENTS	1	<i>Static Route</i>	61
FEATURES	2	<i>RIP</i>	62
HARDWARE OVERVIEW	3	DNS	63
<i>Connections</i>	3	<i>DNS Server</i>	63
<i>LEDs</i>	4	<i>Dynamic DNS</i>	63
INSTALLATION	5	DSL	65
BEFORE YOU BEGIN	5	PRINT SERVER	67
INSTALLATION NOTES	6	PORT MAPPING	67
DEVICE INSTALLATION	12	PPTP	69
<i>Power on Router</i>	12	SAMBA CONFIG	70
<i>Factory Reset Button</i>	13	WIRELESS	71
<i>Network Connections</i>	13	BASIC	71
CONFIGURATION	15	SECURITY	72
WEB-BASED CONFIGURATION UTILITY	15	MAC FILTER	72
QUICK SETUP	16	WIRELESS BRIDGE	73
DEVICE INFO	39	ADVANCED	73
SUMMARY	40	STATION INFO	74
WAN	41	DIAGNOSTICS	74
STATISTICS	41	MANAGEMENT	75
ROUTE	44	SETTINGS	75
ARP	44	SYSTEM LOG	77
DHCP	44	SNMP AGENT	78
ADVANCED SETUP	45	TR-069 CLIENT	79
WAN	45	INTERNET TIME	80
LAN	48	ACCESS CONTROL	81
NAT	49	UPDATE SOFTWARE	83
<i>Virtual Servers</i>	49	SAVE/REBOOT	83
<i>Port Triggering</i>	51	TROUBLESHOOTING	84
<i>DMZ Host</i>	53	NETWORKING BASICS	86
SECURITY	53	CHECK YOUR IP ADDRESS	86
<i>IP Filtering</i>	53	STATICALLY ASSIGN AN IP ADDRESS	87
<i>MAC Filtering</i>	56	TECHNICAL SPECIFICATIONS	88
QUALITY OF SERVICE	58		
<i>Queue Config</i>	59		
<i>QoS Classification</i>	60		
ROUTING	61		

Package Contents

- DSL-2650U Wireless ADSL Router
- Power Adapter
- CD-ROM with User Manual
- One twisted-pair telephone cable used for ADSL connection
- One straight-through Ethernet cable
- One Quick Installation Guide

Warning: The Router must be used with the power adapter included with the device.

System Requirements

- ADSL Internet service
- Computer with:
 - 200MHz Processor
 - 64MB Memory
 - CD-ROM Drive
 - Ethernet Adapter with TCP/IP Protocol Installed
 - Internet Explorer v6 or later, FireFox v1.5
 - Computer with Windows 2000, Windows XP, or Windows Vista
- D-Link Click'n Connect Utility

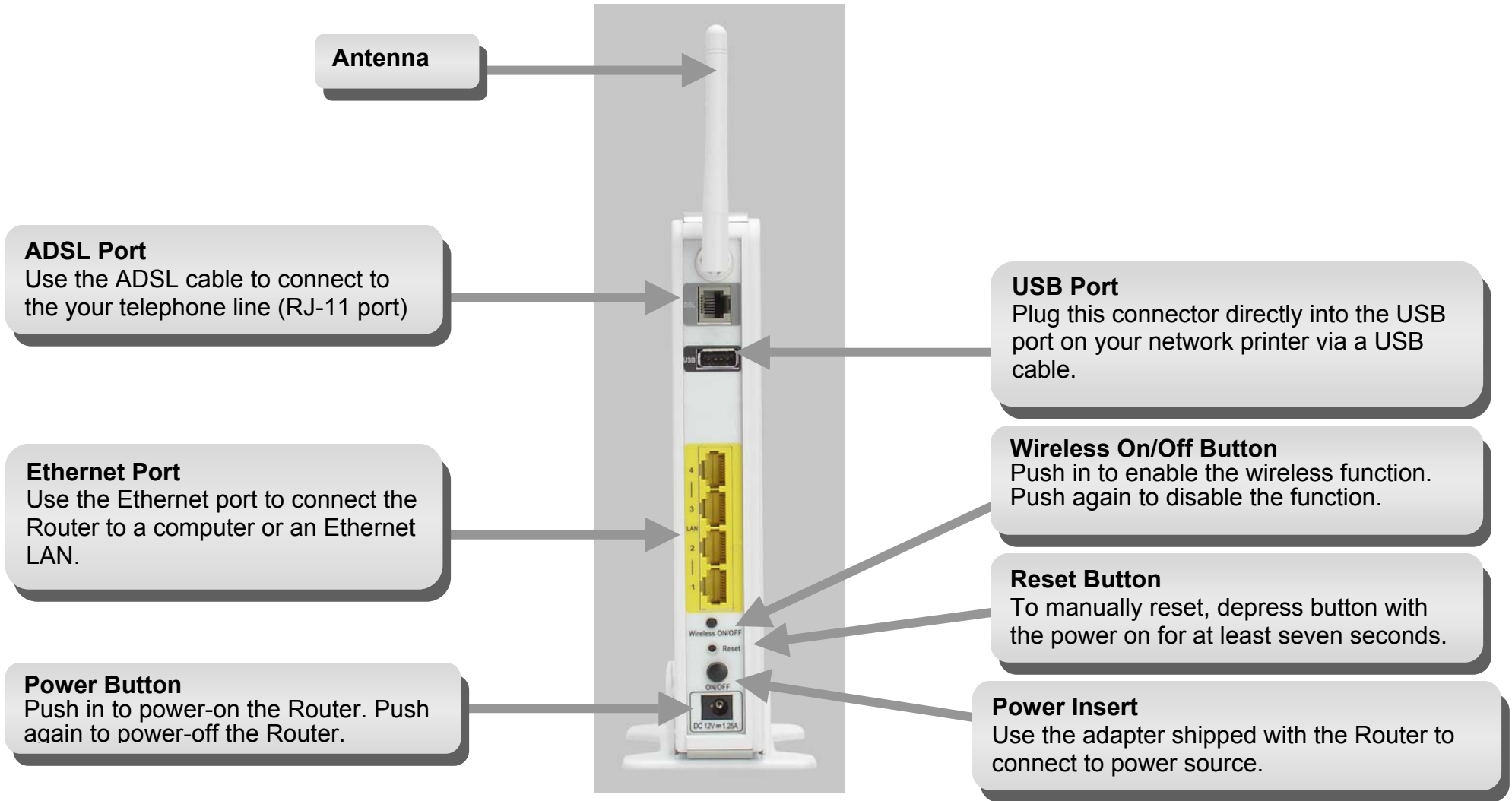


Features

- **PPP (Point-to-Point Protocol) Security** – The DSL-2650U ADSL Router supports PAP (Password Authentication Protocol) and CHAP (Challenge Handshake Authentication Protocol) for PPP connections. The Router also supports MSCHAP.
- **DHCP Support** – Dynamic Host Configuration Protocol automatically and dynamically assigns all LAN IP settings to each host on your network. This eliminates the need to reconfigure every host whenever changes in network topology occur.
- **Network Address Translation (NAT)** – For small office environments, the DSL-2650U allows multiple users on the LAN to access the Internet concurrently through a single Internet account. This provides Internet access to everyone in the office for the price of a single user. NAT improves network security in effect by hiding the private network behind one global and visible IP address. NAT address mapping can also be used to link two IP domains via a LAN-to-LAN connection.
- **TCP/IP (Transfer Control Protocol/Internet Protocol)** – The DSL-2650U supports TCP/IP protocol, the language used for the Internet. It is compatible with access servers manufactured by major vendors.
- **RIP-1/RIP-2** – The DSL-2650U supports both RIP-1 and RIP-2 exchanges with other routers. Using both versions lets the Router to communicate with all RIP enabled devices.
- **Static Routing** – This allows you to select a data path to a particular network destination that will remain in the routing table and never “age out”. If you wish to define a specific route that will always be used for data traffic from your LAN to a specific destination within your LAN (for example to another router or a server) or outside your network (to an ISP defined default gateway for instance).
- **Default Routing** – This allows you to choose a default path for incoming data packets for which the destination address is unknown. This is particularly useful when/if the Router functions as the sole connection to the Internet.
- **ATM (Asynchronous Transfer Mode)** – The DSL-2650U supports Bridged Ethernet over ATM (RFC1483), IP over ATM (RFC1577), and PPP over ATM (RFC 2364).
- **Precise ATM Traffic Shaping** – Traffic shaping is a method of controlling the flow rate of ATM data cells. This function helps to establish the Quality of Service for ATM data transfer.
- **G.hs (Auto-handshake)** – This allows the Router to automatically choose either the G.lite or G.dmt ADSL connection standards.
- **High Performance** – Very high rates of data transfer are possible with the Router. Up to 8 Mbps downstream bit rate using the G.dmt standard.
- **Full Network Management** – The DSL-2650U incorporates SNMP (Simple Network Management Protocol) support for web-based management and text-based network management via an RS-232 or Telnet connection.
- **Telnet Connection** – The Telnet enables a network manager to access the Router’s management software remotely.
- **Easy Installation** – The DSL-2650U uses a web-based graphical user interface program for convenient management access and easy set up. Any common web browser software can be used to manage the Router.

Hardware Overview

Connections



Hardware Overview

LEDs

USB

A steady green light indicates the USB device is connected. A blinking green light indicates activity on the USB.

LAN

A solid green light indicates a valid link on startup. This light will blink when there is activity currently passing through the Ethernet port.

Internet

A solid green light indicates the WAN IP address from IPCP or DHCP and DSL is up or a static IP address is configured and PPP negotiation has been successfully completed. If the indicator blinks green, this means the Router is active. Light remains dark when there is no DHCP response, no PPPoE response, PPPoE authentication has failed, and/or there is no IP address from IPCP.

DSL

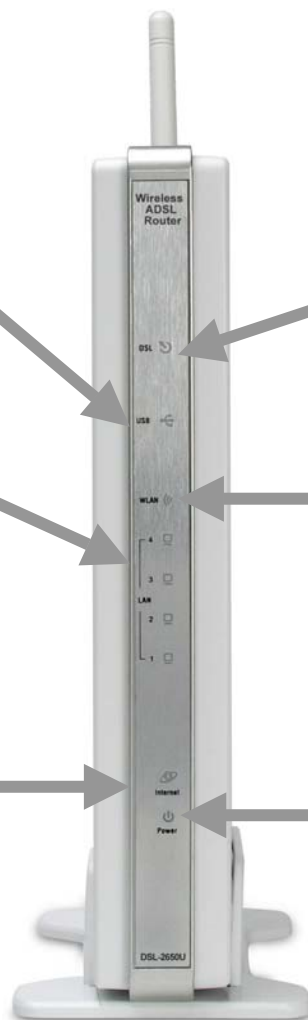
A steady green light indicates a valid ADSL connection. A blinking green light indicates activity on the ADSL interface.

WLAN

A steady green light indicates a wireless connection. A blinking green light indicates activity on the WLAN interface.

Power

A steady green light indicates the unit is powered on. When the device is powered off this remains dark.



Installation

This section will walk you through the installation process. Placement of the Router is very important. Do not place the Router in an enclosed area such as a closet, cabinet, or in the attic or garage.

Before You Begin

Please read and make sure you understand all the prerequisites for proper installation of your new Router. Have all the necessary information and equipment on hand before beginning the installation.

Installation Notes

In order to establish a connection to the Internet it will be necessary to provide information to the Router that will be stored in its memory. For some users, only their account information (Username and Password) is required. For others, various parameters that control and define the Internet connection will be required. You can print out the two pages below and use the tables to list this information. This way you have a hard copy of all the information needed to setup the Router. If it is necessary to reconfigure the device, all the necessary information can be easily accessed. Be sure to keep this information safe and private.

Low Pass Filters

Since ADSL and telephone services share the same copper wiring to carry their respective signals, a filtering mechanism may be necessary to avoid mutual interference. A low pass filter device can be installed for each telephone that shares the line with the ADSL line. These filters are easy to install passive devices that connect to the ADSL device and/or telephone using standard telephone cable. Ask your service provider for more information about the use of low pass filters with your installation.

Operating Systems

The DSL-2650U uses an HTML-based web interface for setup and management. The web configuration manager may be accessed using any operating system capable of running web browser software, including Windows 98 SE, Windows ME, Windows 2000, Windows XP, and Windows Vista.

Web Browser

Any common web browser can be used to configure the Router using the web configuration management software. The program is designed to work best with more recently released browsers such as Opera, Microsoft Internet Explorer® version 6.0, Netscape Navigator® version 6.2.3, or later versions. The web browser must have JavaScript enabled. JavaScript is enabled by default on many browsers. Make sure JavaScript has not been disabled by other software (such as virus protection or web user security packages) that may be running on your computer.

Ethernet Port (NIC Adapter)

Any computer that uses the Router must be able to connect to it through the Ethernet port on the Router. This connection is an Ethernet connection and therefore requires that your computer be equipped with an Ethernet port as well. Most notebook computers are now sold with an Ethernet port already installed. Likewise, most fully assembled desktop computers come with an Ethernet NIC adapter as standard equipment. If your computer does not have an Ethernet port, you must install an Ethernet NIC adapter before you can use the Router. If you must install an adapter, follow the installation instructions that come with the Ethernet NIC adapter.

Additional Software

It may be necessary to install software on your computer that enables the computer to access the Internet. Additional software must be installed if you are using the device a simple bridge. For a bridged connection, the information needed to make and maintain the Internet connection is stored on another computer or gateway device, not in the Router itself.

If your ADSL service is delivered through a PPPoE or PPPoA connection, the information needed to establish and maintain the Internet connection can be stored in the Router. In this case, it is not necessary to install software on your computer. It may however be necessary to change some settings in the device, including account information used to identify and verify the connection.

All connections to the Internet require a unique global IP address. For bridged connections, the global IP settings must reside in a TCP/IP enabled device on the LAN side of the bridge, such as a PC, a server, a gateway device such as a router or similar firewall hardware. The IP address can be assigned in a number of ways. Your network service provider will give you instructions about any additional connection software or NIC configuration that may be required.

Information you will need from your ADSL service provider

Username

This is the Username used to log on to your ADSL service provider's network. Your ADSL service provider uses this to identify your account.

Password

This is the Password used, in conjunction with the Username above, to log on to your ADSL service provider's network. This is used to verify the identity of your account.

WAN Setting / Connection Type

These settings describe the method your ADSL service provider uses to transport data between the Internet and your computer. Most users will use the default settings. You may need to specify one of the following WAN Setting and Connection Type configurations (Connection Type settings listed in parenthesis):

- PPPoE/PPoA (PPPoE LLC, PPPoA LLC or PPPoA VC-Mux)
- Bridge Mode (1483 Bridged IP LLC or 1483 Bridged IP VC Mux)
- IPoA/MER (Static IP Address) (Bridged IP LLC, 1483 Bridged IP VC Mux, 1483 Routed IP LLC, 1483 Routed IP VC-Mux or IPoA)
- MER (Dynamic IP Address) (1483 Bridged IP LLC or 1483 Bridged IP VC-Mux)

Modulation Type

ADSL uses various standardized modulation techniques to transmit data over the allotted signal frequencies. Some users may need to change the type of modulation used for their service. The default DSL modulation (ADSL2+ Multi-Mode) used for the Router automatically detects all types of ADSL, ADSL2, and ADSL2+ modulation.

Security Protocol

This is the method your ADSL service provider will use to verify your Username and Password when you log on to their network. Your Router supports the PAP and CHAP protocols.

VPI

Most users will not be required to change this setting. The Virtual Path Identifier (VPI) is used in conjunction with the Virtual Channel Identifier (VCI) to identify the data path between your ADSL service provider's network and your computer. If you are setting up the Router for multiple virtual connections, you will need to configure the VPI and VCI as instructed by your ADSL service provider for the additional connections. This setting can be changed in the WAN Settings window of the web management interface.

VCI

Most users will not be required to change this setting. The Virtual Channel Identifier (VCI) used in conjunction with the VPI to identify the data path between your ADSL service provider's network and your computer. If you are setting up the Router for multiple virtual connections, you will need to configure the VPI and VCI as instructed by your ADSL service provider for the additional connections. This setting can be changed in the WAN Settings window of the web management interface.

Information you will need about DSL-2650U

Username

This is the Username needed access the Router's management interface. When you attempt to connect to the device through a web browser you will be prompted to enter this Username. The default Username for the Router is "admin." The user cannot change this.

Password

This is the Password you will be prompted to enter when you access the Router's management interface. The default Password is "admin." The user may change this.

LAN IP addresses for the DSL-2650U

This is the IP address you will enter into the Address field of your web browser to access the Router's configuration graphical user interface (GUI) using a web browser. The default IP address is 192.168.1.1. This may be changed to suit any IP address scheme the user desires. This address will be the base IP address used for DHCP service on the LAN when DHCP is enabled.

LAN Subnet Mask for the DSL-2650U

This is the subnet mask used by the DSL-2650U, and will be used throughout your LAN. The default subnet mask is 255.255.255.0. This can be changed later.

Information you will need about your LAN or computer

Ethernet NIC

If your computer has an Ethernet NIC, you can connect the DSL-2650U to this Ethernet port using an Ethernet cable. You can also use the Ethernet ports on the DSL-2650U to connect to other computer or Ethernet devices.

DHCP Client status

Your DSL-2650U ADSL Router is configured, by default, to be a DHCP server. This means that it can assign an IP address, subnet mask, and a default gateway address to computers on your LAN. The default range of IP addresses the DSL-2650U will assign are from 192.168.1.2 to 192.168.1.254. Your computer (or computers) needs to be configured to obtain an IP address automatically (that is, they need to be configured as DHCP clients.)

It is recommended that you collect and record this information here, or in some other secure place, in case you have to re-configure your ADSL connection in the future.

Once you have the above information, you are ready to setup and configure your DSL-2650U ADSL Router.

Device Installation

The DSL-2650U connects two separate physical interfaces, an ADSL (WAN) and an Ethernet (LAN) interface. Place the Router in a location where it can be connected to the various devices as well as to a power source. The Router should not be located where it will be exposed to moisture or excessive heat. Make sure the cables and power cord are placed safely out of the way so they do not create a tripping hazard. As with any electrical appliance, observe common sense safety procedures.

The Router can be placed on a shelf or desktop, ideally you should be able to see the LED indicators on the front if you need to view them for troubleshooting.

Power on Router

The Router must be used with the power adapter included with the device.

1. Insert the AC Power Adapter cord into the power receptacle located on the rear panel of the Router and plug the adapter into a suitable nearby power source.
2. Depress the Power button into the on position. You should see the Power LED indicator light up and remain lit. The Status LED should light solid green and begin to blink after a few seconds.
3. If the Ethernet port is connected to a working device, check the LAN LED indicators to make sure the connection is valid. The Router will attempt to establish the ADSL connection, if the ADSL line is connected and the Router is properly configured this should light up after several seconds. If this is the first time installing the device, some settings may need to be changed before the Router can establish a connection.

Factory Reset Button

The Router may be reset to the original factory default settings by using a ballpoint or paperclip to gently push down the reset button in the following sequence:

1. Ensure the Router is powered on.
2. Press and hold the reset button on the back of the device for approximately 3 to 5 seconds.
3. This process should take around 30~60 seconds.

Remember that this will wipe out any settings stored in flash memory including user account information and LAN IP settings. The device settings will be restored to the factory default IP address **192.168.1.1** and the subnet mask is **255.255.255.0**, the default management Username is “admin” and the default Password is “admin.”

Network Connections

Connect ADSL Line

Use the ADSL cable included with the Router to connect it to a telephone wall socket or receptacle. Plug one end of the cable into the ADSL port (RJ-11 receptacle) on the rear panel of the Router and insert the other end into the RJ-11 wall socket. If you are using a low pass filter device, follow the instructions included with the device or given to you by your service provider. The ADSL connection represents the WAN interface, the connection to the Internet. It is the physical link to the service provider’s network backbone and ultimately to the Internet.

Connect Router to Ethernet

The Router may be connected to a single computer or Ethernet device through the 10BASE-TX Ethernet port on the rear panel. Any connection to an Ethernet concentrating device such as a switch or hub must operate at a speed of 10/100 Mbps only. When connecting the Router to any Ethernet device that is capable of operating at speeds higher than 10Mbps, be sure that the device has auto-negotiation (NWay) enabled for the connecting port. Use standard twisted-pair cable with RJ-45 connectors. The RJ-45 port on the Router is a crossed port (MDI-X). Follow standard Ethernet guidelines when deciding what type of cable to use to make this connection. When connecting the Router directly to a PC or server use a normal straight-through cable. You should use a crossed cable when connecting the Router to a normal (MDI-X) port on a switch or hub. Use a normal straight-through cable when connecting it to an uplink (MDI-II) port on a hub or switch. The rules governing Ethernet cable lengths apply to the LAN to Router connection. Be sure that the cable connecting the LAN to the Router does not exceed 100 meters.

Hub or Switch to Router Connection

Connect the Router to an uplink port (MDI-II) on an Ethernet hub or switch with a straight-through cable. If you wish to reserve the uplink port on the switch or hub for another device, connect to any on the other MDI-X ports (1x, 2x, etc.) with a crossed cable.

Computer to Router Connection

You can connect the Router directly to a 10/100BASE-TX Ethernet adapter card (NIC) installed on a PC using the Ethernet cable provided.

Configuration

This section will show you how to configure your new D-Link Router using the web-based configuration utility.

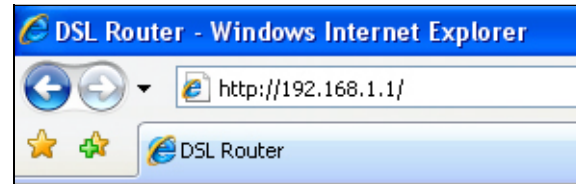
Web-based Configuration Utility

Connect to the Router

To configure the WAN connection used by the Router it is first necessary to communicate with the Router through its management interface, which is HTML-based and can be accessed using a web browser. The easiest way to make sure your computer has the correct IP settings is to configure it to use the DHCP server in the Router. The next section describes how to change the IP configuration for a computer running a Windows operating system to be a DHCP client.

To access the configuration utility, open a web-browser such as Internet Explorer and enter the IP address of the router (**192.168.1.1**).

Type “**admin**” for the User Name and “**admin**” in the Password field. If you get a **Page Cannot be Displayed** error, please refer to the **Troubleshooting** section for assistance.



Quick Setup

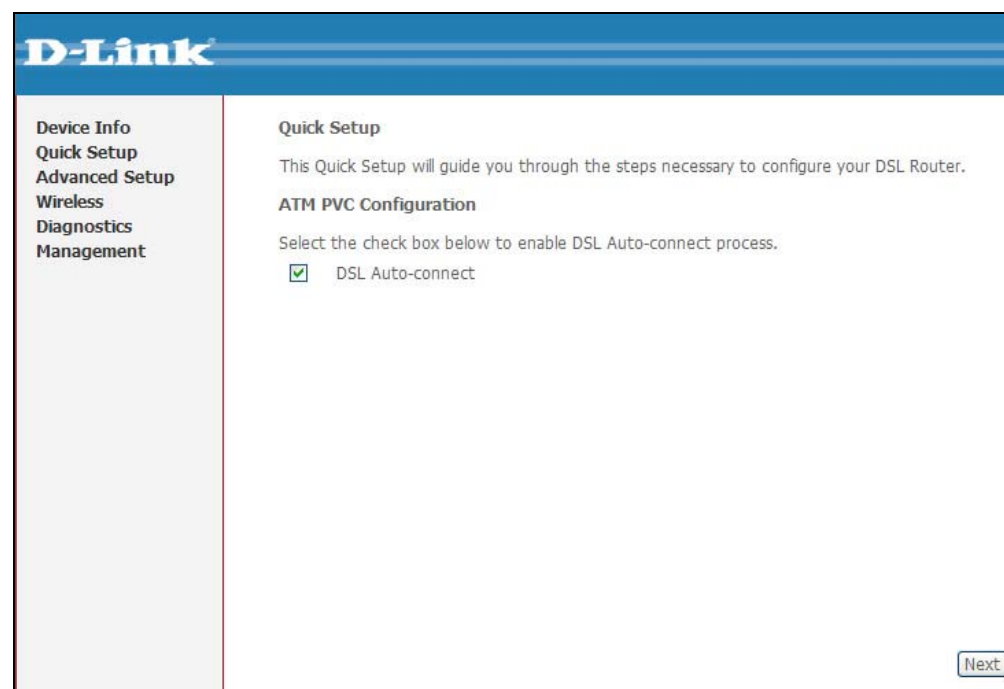
This chapter is concerned with using your computer to configure the WAN connection. The following chapter describes the various windows used to configure and monitor the Router including how to change IP settings and DHCP server setup.

QUICK SETUP

Click the **Quick Setup** link on the left panel of the opening page to launch a series of setup windows.

Tick the DSL Auto-connect check box and then click the **Next** button.

If the ADSL connection is down, deselect the **DSL Auto-connect** checkbox and then click the **Next** button to manually assign VPI and VCI values.



QUICK SETUP

This window allows you to set up ATM PVC configuration. Enter a Port Identifier, Virtual Path Identifier, and Virtual Channel Identifier. The VPI and VCI values should be provided by your ISP. This window also allows you to enable QoS by ticking the Enable Quality of Service check box. Click the **Next** button to continue.

Quick Setup

This Quick Setup will guide you through the steps necessary to configure your DSL Router.

ATM PVC Configuration

Select the check box below to enable DSL Auto-connect process.

DSL Auto-connect

The Port Identifier (PORT) Virtual Path Identifier (VPI) and Virtual Channel Identifier (VCI) are needed for setting up the ATM PVC. Do not change VPI and VCI numbers unless your ISP instructs you otherwise.

PORT: [0-3]

VPI: [0-255]

VCI: [32-65535]

Enable Quality Of Service

Enabling QoS for a PVC improves performance for selected classes of applications. However, since QoS also consumes system resources, the number of PVCs will be reduced consequently. Use **Advanced Setup/Quality of Service** to assign priorities for the applications.

Enable Quality Of Service

QUICK SETUP – CONNECTION TYPE

This window allows you to select the appropriate connection type. The choices include PPP over ATM (PPPoA), PPP over Ethernet (PPPoE), MAC Encapsulation Routing (MER), IP over ATM (IPoA), and Bridging (default).

This window also allows you to use the drop-down menu to select the desired Encapsulation Mode. Click the **Next** button to continue.

Connection Type

Select the type of network protocol for IP over Ethernet as WAN interface

PPP over ATM (PPPoA)

PPP over Ethernet (PPPoE)

MAC Encapsulation Routing (MER)

IP over ATM (IPoA)

Bridging

Encapsulation Mode

LLC/SNAP-BRIDGING ▾

Back Next

QUICK SETUP – BRIDGING

To enable bridging, tick the Enable Bridge Service check box and enter a Service Name.

To disable WAN service, unselect the check box.

Click the **Next** button to continue.

Unselect the check box below to disable this WAN service

Enable Bridge Service:

Service Name:

Back Next

QUICK SETUP – BRIDGING

This window allows you to configure the Router IP address and subnet mask for your LAN. Once you have entered an IP address and subnet mask, click the **Next** button to continue.

Device Setup

Configure the DSL Router IP Address and Subnet Mask for your Local Area Network (LAN).

IP Address:

Subnet Mask:

QUICK SETUP – BRIDGING

This window allows you to configure Wireless settings of the Router. Tick **Enable Wireless** and enter SSID to enable Wireless LAN. Click the **Next** button to continue.

Wireless -- Setup

Enable Wireless

Enter the wireless network name (also known as SSID).

SSID:

QUICK SETUP – BRIDGING

This summary window allows you to confirm the bridging settings you have just made. Click the **Save/Reboot** button to save your new bridging settings and restart the Router.

WAN Setup - Summary

Make sure that the settings below match the settings provided by your ISP.

PORT / VPI / VCI:	0 / 0 / 35
Connection Type:	Bridge
Service Name:	br_0_0_35
Service Category:	UBR
IP Address:	Not Applicable
Service State:	Disabled
NAT:	Disabled
Firewall:	Disabled
IGMP Multicast:	Not Applicable
Quality Of Service:	Disabled

Click "Save/Reboot" to save these settings and reboot router. Click "Back" to make any modifications.
NOTE: The configuration process takes about 1 minute to complete and your DSL Router will reboot.

QUICK SETUP – PPPoA

Click the PPP over ATM (PPPoA) radio button on this window. This window also allows you to use the drop-down menu to select the desired Encapsulation Mode. Click the **Next** button to continue.

Connection Type

Select the type of network protocol for IP over Ethernet as WAN interface

PPP over ATM (PPPoA)

PPP over Ethernet (PPPoE)

MAC Encapsulation Routing (MER)

IP over ATM (IPoA)

Bridging

Encapsulation Mode

VC/MUX

QUICK SETUP – PPPoA

This window allows you to set the username and the password for your PPP connection. This information is obtained from your ISP. Additional settings on this window will also depend on your ISP. Click the **Next** button to continue.

PPP Username and Password

PPP usually requires that you have a user name and password to establish your connection. In the boxes below, enter the user name and password that your ISP has provided to you.

PPP Username:

PPP Password:

Authentication Method:

Enable NAT

Enable Firewall

Obtain default gateway automatically

Use the following default gateway:

Use IP Address:

Use WAN Interface:

PPP IP extension

Advanced DMZ

Non DMZ IP Address:

Non DMZ Net Mask:

Dial on demand (with idle timeout timer)

Use Static IP Address

Retry PPP password on authentication error

Enable PPP Debug Mode

QUICK SETUP - PPPoA

This window allows you to enable IGMP multicasting and WAN service. Most users will want to leave the MTU value at the default setting unless your ISP advises you to change it. Click the **Next** button to continue.

Enable IGMP Multicast, and WAN Service

Enable IGMP Multicast

Enable WAN Service

Service Name

PPPoE Link Setting

MTU

QUICK SETUP - PPPoA

This window allows you to enter an IP address and subnet mask for the LAN interface. In addition, you can either enable or disable the DHCP server.

To enable the DHCP server, enter a starting IP address, an ending IP address, and a subnet mask. You may also choose to change the default value of the leased time. Click the **Next** button to continue.

Device Setup

Configure the DSL Router IP Address and Subnet Mask for LAN interface.

IP Address:

Subnet Mask:

Disable DHCP Server

Enable DHCP Server

Start IP Address:

End IP Address:

Subnet Mask:

Leased Time (hour):

Configure the second IP Address and Subnet Mask for LAN interface

QUICK SETUP - PPPoA

This window allows you to configure Wireless settings of the Router. Tick **Enable Wireless** and enter SSID to enable Wireless LAN. Click the **Next** button to continue.

Wireless -- Setup

Enable Wireless

Enter the wireless network name (also known as SSID).

SSID:

QUICK SETUP – PPPoA

This summary window allows you to confirm the settings you have just made. Click the **Save/Reboot** button to save your new PPP over ATM settings and restart the Router.

WAN Setup - Summary

Make sure that the settings below match the settings provided by your ISP.

PORT / VPI / VCI:	0 / 0 / 35
Connection Type:	PPPoA
Service Name:	pppoa_0_0_35_1
Service Category:	UBR
IP Address:	Automatically Assigned
Service State:	Disabled
NAT:	Enabled
Firewall:	Enabled
IGMP Multicast:	Disabled
Quality Of Service:	Disabled
MTU:	1492

Click "Save/Reboot" to save these settings and reboot router. Click "Back" to make any modifications.
NOTE: The configuration process takes about 1 minute to complete and your DSL Router will reboot.

QUICK SETUP – PPPoE

Click the PPP over Ethernet (PPPoE) radio button on this window. This window also allows you to use the drop-down menu to select the desired Encapsulation Mode. Click the **Next** button to continue.

Connection Type

Select the type of network protocol for IP over Ethernet as WAN interface

PPP over ATM (PPPoA)

PPP over Ethernet (PPPoE)

MAC Encapsulation Routing (MER)

IP over ATM (IPoA)

Bridging

Encapsulation Mode

LLC/SNAP-BRIDGING ▾

QUICK SETUP – PPPoE

This window allows you to set the username and the password for your PPP connection. This information is obtained from your ISP. Additional settings on this window will also depend on your ISP. Click the **Next** button to continue.

PPP Username and Password

PPP usually requires that you have a user name and password to establish your connection. In the boxes below, enter the user name and password that your ISP has provided to you.

PPP Username:

PPP Password:

PPPoE Service Name:

Authentication Method: **AUTO**

Enable NAT

Enable Firewall

Obtain default gateway automatically

Use the following default gateway:

Use IP Address:

Use WAN Interface: **pppoe_0_0_35_1/ppp_0_0_35_1**

PPP IP extension

Advanced DMZ

Non DMZ IP Address:

Non DMZ Net Mask:

Dial on demand (with idle timeout timer)

Use Static IP Address

Retry PPP password on authentication error

Enable PPP Debug Mode

Bridge PPPoE Frames Between WAN and Local Ports (Default Enabled)

QUICK SETUP – PPPoE

This window allows you to enable IGMP multicasting and WAN service. Most users will want to leave the MTU value at the default setting unless your ISP advises you to change it. Click the **Next** button to continue.

Enable IGMP Multicast, and WAN Service

Enable IGMP Multicast

Enable WAN Service

Service Name

PPP Link Setting

MTU

QUICK SETUP – PPPoE

This window allows you to enter an IP address and subnet mask for the LAN interface. In addition, you can either enable or disable the DHCP server.

To enable the DHCP server, enter a starting IP address, an ending IP address, and a subnet mask. You may also choose to change the default value of the leased time. Click the **Next** button to continue.

Device Setup

Configure the DSL Router IP Address and Subnet Mask for LAN interface.

IP Address:

Subnet Mask:

Disable DHCP Server

Enable DHCP Server

Start IP Address:

End IP Address:

Subnet Mask:

Leased Time (hour):

Configure the second IP Address and Subnet Mask for LAN interface

QUICK SETUP - PPPoE

This window allows you to configure Wireless settings of the Router. Tick **Enable Wireless** and enter SSID to enable Wireless LAN. Click the **Next** button to continue.

Wireless -- Setup

Enable Wireless

Enter the wireless network name (also known as SSID).

SSID:

QUICK SETUP – PPPoE

This summary window allows you to confirm the settings you have just made. Click the **Save/Reboot** button to save your new PPP over Ethernet settings and restart the Router.

WAN Setup - Summary

Make sure that the settings below match the settings provided by your ISP.

PORT / VPI / VCI:	0 / 0 / 35
Connection Type:	MER
Service Name:	mer_0_0_35
Service Category:	UBR
IP Address:	Automatically Assigned
Service State:	Enabled
NAT:	Enabled
Firewall:	Enabled
IGMP Multicast:	Disabled
Quality Of Service:	Disabled

Click "Save/Reboot" to save these settings and reboot router. Click "Back" to make any modifications.
NOTE: The configuration process takes about 1 minute to complete and your DSL Router will reboot.

[Back](#)

[Save/Reboot](#)

QUICK SETUP – MER

Click the MAC Encapsulation Routing (MER) radio button on this window. This window also allows you to use the drop-down menu to select the desired Encapsulation Mode. Click the **Next** button to continue.

Connection Type

Select the type of network protocol for IP over Ethernet as WAN interface

PPP over ATM (PPPoA)

PPP over Ethernet (PPPoE)

MAC Encapsulation Routing (MER)

IP over ATM (IPoA)

Bridging

Encapsulation Mode

LLC/SNAP-BRIDGING ▾

Back Next

QUICK SETUP – MER

This window allows you to configure the WAN IP settings. This information is obtained from your ISP. Click the **Next** button to continue.

WAN IP Settings

Enter information provided to you by your ISP to configure the WAN IP settings.
Notice: DHCP can be enabled for PVC in MER mode or IP over Ethernet as WAN interface if "Obtain an IP address automatically" is chosen. Changing the default gateway or the DNS effects the whole system. Configuring them with static values will disable the automatic assignment from DHCP or other WAN connection.
If you configure static default gateway over this PVC in MER mode, you must enter the IP address of the remote gateway in the "Use IP address". The "Use WAN interface" is optional.

Obtain an IP address automatically
 Use the following IP address:

WAN IP Address:
WAN Subnet Mask:

Advanced DMZ

Obtain default gateway automatically
 Use the following default gateway:

Use IP Address:
 Use WAN Interface:

Obtain DNS server addresses automatically
 Use the following DNS server addresses:

Primary DNS server:
Secondary DNS server:

QUICK SETUP – MER

This window allows you to enable or disable Network Address Translation and a firewall for your Router. In addition, you can enable or disable IGMP multicasting and WAN service. Click the **Next** button to continue.

Network Address Translation Settings

Network Address Translation (NAT) allows you to share one Wide Area Network (WAN) IP address for multiple computers on your Local Area Network (LAN).

Enable NAT

Enable Firewall

Enable IGMP Multicast, and WAN Service

Enable IGMP Multicast

Enable WAN Service

Service Name:

QUICK SETUP – MER

This window allows you to enter an IP address and subnet mask for the LAN interface. In addition, you can either enable or disable the DHCP server.

To enable the DHCP server, enter a starting IP address, an ending IP address, and a subnet mask. You may also choose to change the default value of the leased time. Click the **Next** button to continue.

Device Setup

Configure the DSL Router IP Address and Subnet Mask for LAN interface.

IP Address:

Subnet Mask:

Disable DHCP Server

Enable DHCP Server

Start IP Address:

End IP Address:

Subnet Mask:

Leased Time (hour):

Configure the second IP Address and Subnet Mask for LAN interface

QUICK SETUP - MER

This window allows you to configure Wireless settings of the Router. Tick **Enable Wireless** and enter SSID to enable Wireless LAN. Click the **Next** button to continue.

Wireless -- Setup

Enable Wireless

Enter the wireless network name (also known as SSID).

SSID:

QUICK SETUP – MER

This summary window allows you to confirm the settings you have just made. Click the **Save/Reboot** button to save your new MAC Encapsulation Routing settings and restart the Router.

WAN Setup - Summary

Make sure that the settings below match the settings provided by your ISP.

PORT / VPI / VCI:	0 / 0 / 35
Connection Type:	MER
Service Name:	mer_0_0_35
Service Category:	UBR
IP Address:	Automatically Assigned
Service State:	Enabled
NAT:	Enabled
Firewall:	Enabled
IGMP Multicast:	Disabled
Quality Of Service:	Disabled

Click "Save/Reboot" to save these settings and reboot router. Click "Back" to make any modifications.
NOTE: The configuration process takes about 1 minute to complete and your DSL Router will reboot.

QUICK SETUP – IPoA

Click the IP over ATM (IPoA) radio button on this window. This window also allows you to use the drop-down menu to select the desired Encapsulation Mode. Click the **Next** button to continue.

QUICK SETUP – IPoA

This window allows you to configure the WAN IP settings. This information is obtained from your ISP. Click the **Next** button to continue.

Connection Type

Select the type of network protocol for IP over Ethernet as WAN interface

PPP over ATM (PPPoA)

PPP over Ethernet (PPPoE)

MAC Encapsulation Routing (MER)

IP over ATM (IPoA)

Bridging

Encapsulation Mode

LLC/SNAP-ROUTING ▾

Back Next

WAN IP Settings

Enter information provided to you by your ISP to configure the WAN IP settings.

Notice: DHCP is not supported in IPoA mode. Changing the default gateway or the DNS effects the whole system. Configuring them with static values will disable the automatic assignment from other WAN connection.

WAN IP Address: 192.168.1.2

WAN Subnet Mask: 255.255.255.0

Use the following default gateway:

Use IP Address:

Use WAN Interface: ipoa_0_0_35/ipa_0_0_35 ▾

Use the following DNS server addresses:

Primary DNS server:

Secondary DNS server:

Back Next

QUICK SETUP – IPoA

This window allows you to enable or disable Network Address Translation and a firewall for your Router. In addition, you can enable or disable IGMP multicasting and WAN service. Click the **Next** button to continue.

Network Address Translation Settings

Network Address Translation (NAT) allows you to share one Wide Area Network (WAN) IP address for multiple computers on your Local Area Network (LAN).

Enable NAT

Enable Firewall

Enable IGMP Multicast, and WAN Service

Enable IGMP Multicast

Enable WAN Service

Service Name:

QUICK SETUP – IPoA

This window allows you to enter an IP address and subnet mask for the LAN interface. In addition, you can either enable or disable the DHCP server.

To enable the DHCP server, enter a starting IP address, an ending IP address, and a subnet mask. You may also choose to change the default value of the leased time. Click the **Next** button to continue.

Device Setup

Configure the DSL Router IP Address and Subnet Mask for LAN interface.

IP Address:

Subnet Mask:

Disable DHCP Server

Enable DHCP Server

Start IP Address:

End IP Address:

Subnet Mask:

Leased Time (hour):

Configure the second IP Address and Subnet Mask for LAN interface

QUICK SETUP - IPoA

This window allows you to configure Wireless settings of the Router. Tick **Enable Wireless** and enter SSID to enable Wireless LAN. Click the **Next** button to continue.

Wireless -- Setup

Enable Wireless

Enter the wireless network name (also known as SSID).

SSID:

QUICK SETUP – IPoA

This summary window allows you to confirm the settings you have just made. Click the **Save/Reboot** button to save your new IP over ATM settings and restart the Router.

WAN Setup - Summary

Make sure that the settings below match the settings provided by your ISP.

PORT / VPI / VCI:	0 / 0 / 35
Connection Type:	IPoA
Service Name:	ipoa_0_0_35
Service Category:	UBR
IP Address:	192.168.1.2
Service State:	Enabled
NAT:	Enabled
Firewall:	Enabled
IGMP Multicast:	Disabled
Quality Of Service:	Disabled

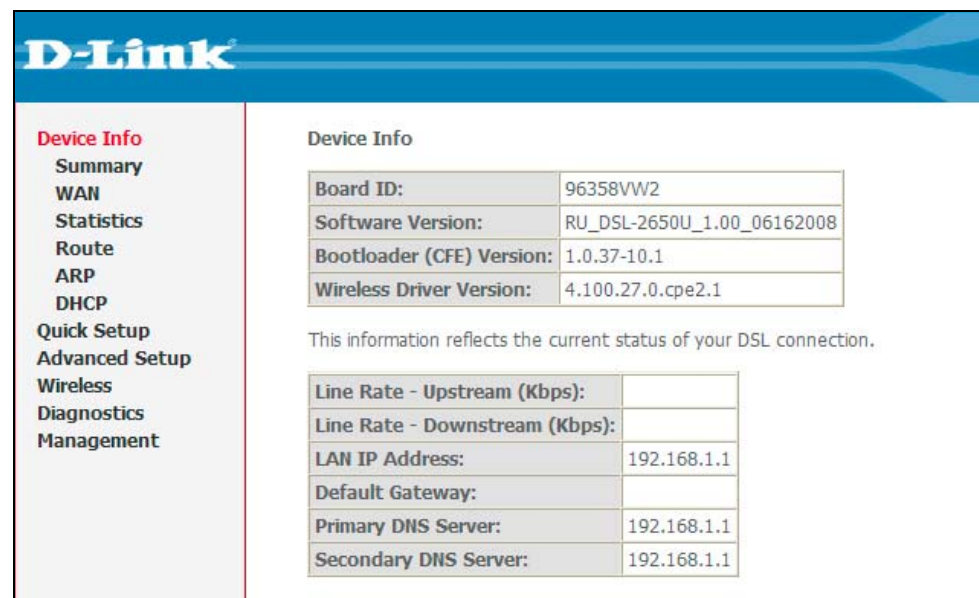
Click "Save/Reboot" to save these settings and reboot router. Click "Back" to make any modifications.
NOTE: The configuration process takes about 1 minute to complete and your DSL Router will reboot.

[Back](#)

[Save/Reboot](#)

Device Info

To access the **Device Info** window, click either the **Device Info** or **Summary** button in the **Device Info** directory. The following page opens:



D-Link

Device Info

- Device Info
- Summary
- WAN
- Statistics
- Route
- ARP
- DHCP
- Quick Setup
- Advanced Setup
- Wireless
- Diagnostics
- Management

Device Info

Board ID:	96358VW2
Software Version:	RU_DSL-2650U_1.00_06162008
Bootloader (CFE) Version:	1.0.37-10.1
Wireless Driver Version:	4.100.27.0.cpe2.1

This information reflects the current status of your DSL connection.

Line Rate - Upstream (Kbps):	
Line Rate - Downstream (Kbps):	
LAN IP Address:	192.168.1.1
Default Gateway:	
Primary DNS Server:	192.168.1.1
Secondary DNS Server:	192.168.1.1

Summary

This window displays the current status of your DSL connection, including the software version, LAN IP address, and DNS server address.

Device Info	
Board ID:	96358VW2
Software Version:	RU_DSL-2650U_1.00_06162008
Bootloader (CFE) Version:	1.0.37-10.1
Wireless Driver Version:	4.100.27.0.cpe2.1

This information reflects the current status of your DSL connection.

Line Rate - Upstream (Kbps):	
Line Rate - Downstream (Kbps):	
LAN IP Address:	192.168.1.1
Default Gateway:	
Primary DNS Server:	192.168.1.1
Secondary DNS Server:	192.168.1.1

WAN

To access the **WAN Info** window, click the **WAN** button in the **Device Info** directory.

This window displays the current status of your WAN connection.

WAN Info											
Port/VPI/VCI	VLAN Mux	Con. ID	Category	Service	Interface	Protocol	Igmp	QoS	State	Status	IP Address
0/0/35	Off	1	UBR	ppp0a_0_0_35_1	ppp_0_0_35_1	PPPoA	Disabled	Disabled	Enabled	Unknown	

PPTP Info	
IP Address	Gateway

Statistics

To access the Router's first **Statistics** window, click the **Statistics** button in the **Device Info** directory.

This window displays the Router's LAN statistics. Click the **Reset Statistics** button to refresh these statistics.

Statistics -- LAN								
Interface	Received				Transmitted			
	Bytes	Pkts	Errs	Drops	Bytes	Pkts	Errs	Drops
Ethernet	1783054	13360	0	0	4542873	13666	0	0
USB	0	0	0	0	0	0	0	0
Wireless	0	0	0	0	72930	726	0	0

Section 3 – Configuration

This window displays the Router's WAN statistics. Click the **Reset Statistics** button to refresh these statistics.

Statistics -- WAN											
Service	VPI/VCI	Protocol	Interface	Received				Transmitted			
				Bytes	Pkts	Errs	Drops	Bytes	Pkts	Errs	Drops
br_0_0_35	0/0/35	Bridge	nas_0_0_35	0	0	0	0	0	0	0	0

This window displays the Router's ATM statistics. Click the **Reset** button to refresh these statistics.

ATM Interface Statistics												
In Octets	Out Octets	In Errors	In Unknown	In Hec Errors	In Invalid Vpi Vci Errors	In Port Not Enable Errors	In PTI Errors	In Idle Cells	In Circuit Type Errors	In OAM RM CRC Errors	In GFC Errors	
0	0	0	0	0	0	0	0	0	0	0	0	

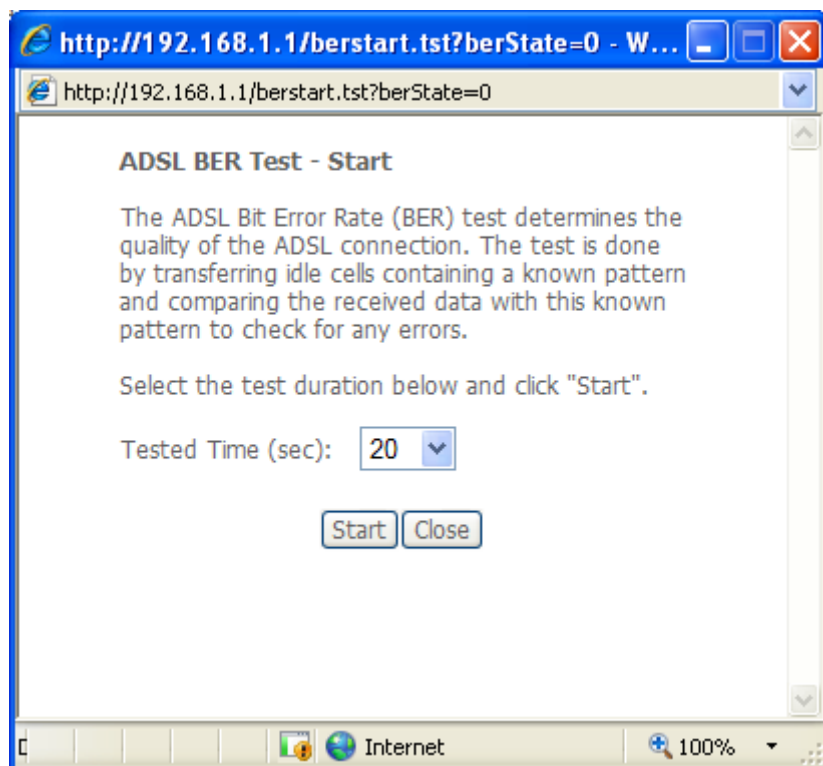
AAL5 Interface Statistics							
In Octets	Out Octets	In Ucast Pkts	Out Ucast Pkts	In Errors	Out Errors	In Discards	Out Discards
0	0	0	0	0	0	0	0

AAL5 VCC Statistics					
VPI/VCI	CRC Errors	SAR Timeouts	Oversized SDUs	Short Packet Errors	Length Errors

Section 3 – Configuration

This window displays the Router's ADSL statistics. Click the **Reset Statistics** button to refresh these statistics.

Click the **ADSL BER Test** button to access the ADSL Bit Error Rate Test window displayed below:



Statistics -- ADSL		
Mode:		
Type:		
Line Coding:		
Status:		Link Down
Link Power State:		L0
	Downstream	Upstream
SNR Margin (dB):		
Attenuation (dB):		
Output Power (dBm):		
Attainable Rate (Kbps):		
Rate (Kbps):		
Super Frames:		
Super Frame Errors:		
RS Words:		
RS Correctable Errors:		
RS Uncorrectable Errors:		
HEC Errors:		
OCD Errors:		
LCD Errors:		
Total Cells:		
Data Cells:		
Bit Errors:		
Total ES:		
Total SES:		
Total UAS:		
ADSL BER Test Reset Statistics		