

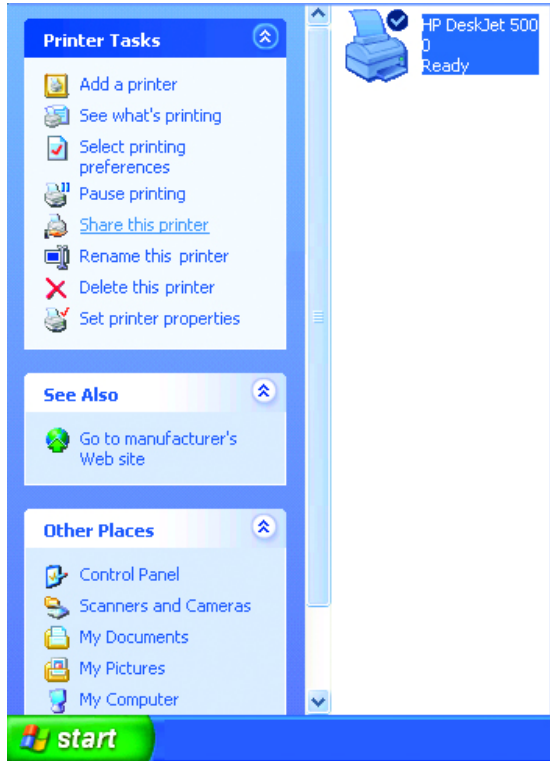
# Networking Basics

## Adding a local printer

- Go to **Start> Printers and Faxes**

*A successful installation will display the printer icon as shown at right.*

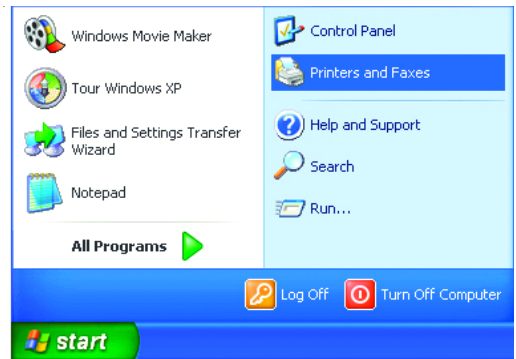
You have successfully added a local printer.



## Sharing a network printer

After you have run the **Network Setup Wizard** on all the computers on your network, you can run the **Add Printer Wizard** on all the computers on your network. Please follow these directions to use the **Add Printer Wizard** to share a printer on your network:

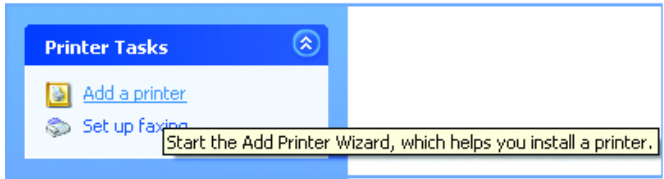
- Go to **Start> Printers and Faxes**



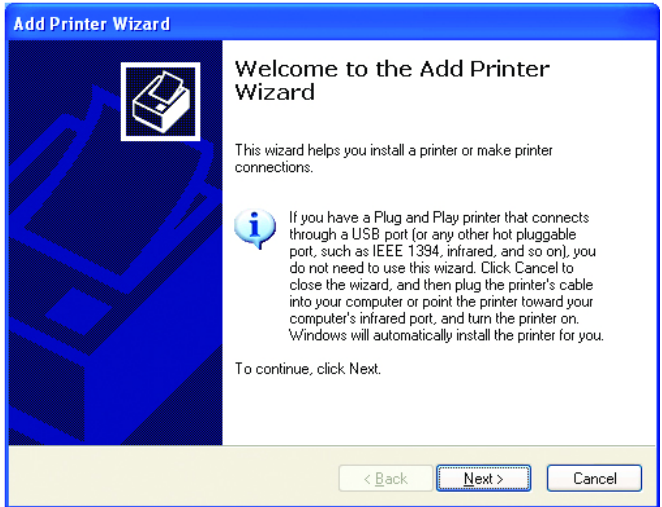
# Networking Basics

## Sharing a network printer

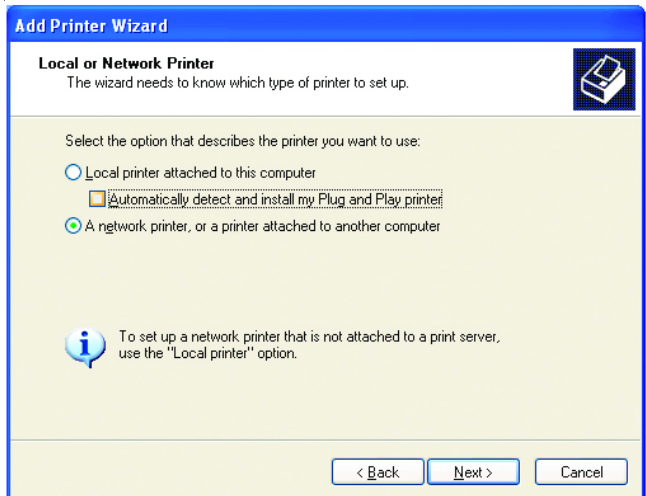
- Click on **Add a printer**



- Click **Next**



- Select **Network Printer**

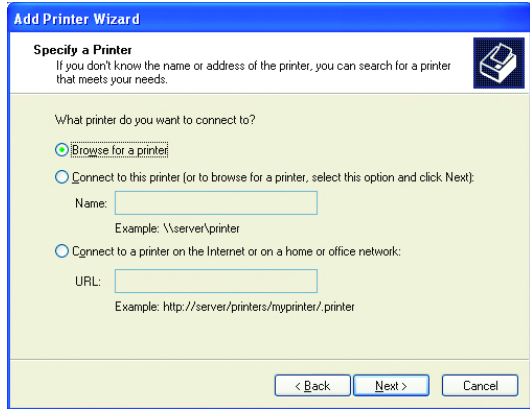


- Click **Next**

# Networking Basics

## Sharing a network printer

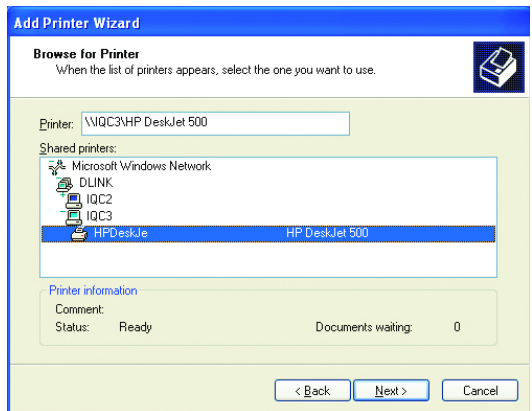
- Select **Browse for a printer**



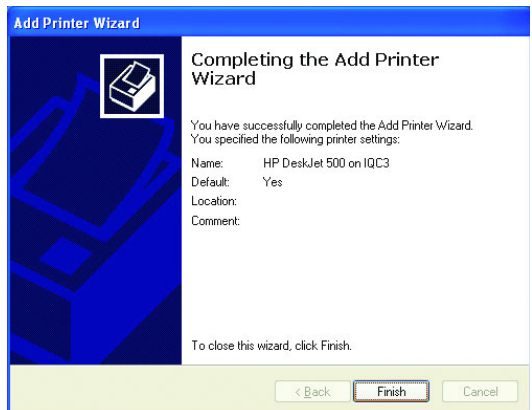
- Click **Next**

Select the **printer** you would like to share

- Click **Next**



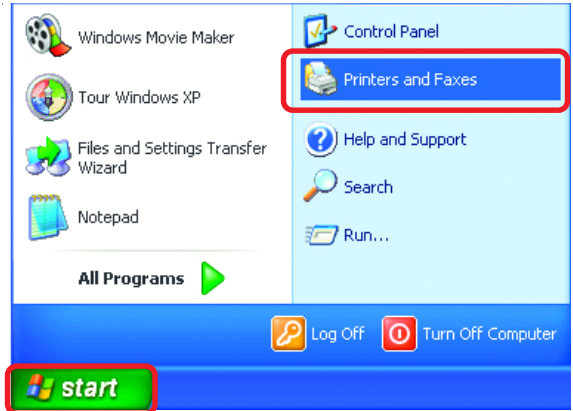
- Click **Finish**



## Networking Basics

### Sharing a network printer

- To check for proper installation:
- Go to **Start > Printers and Faxes**



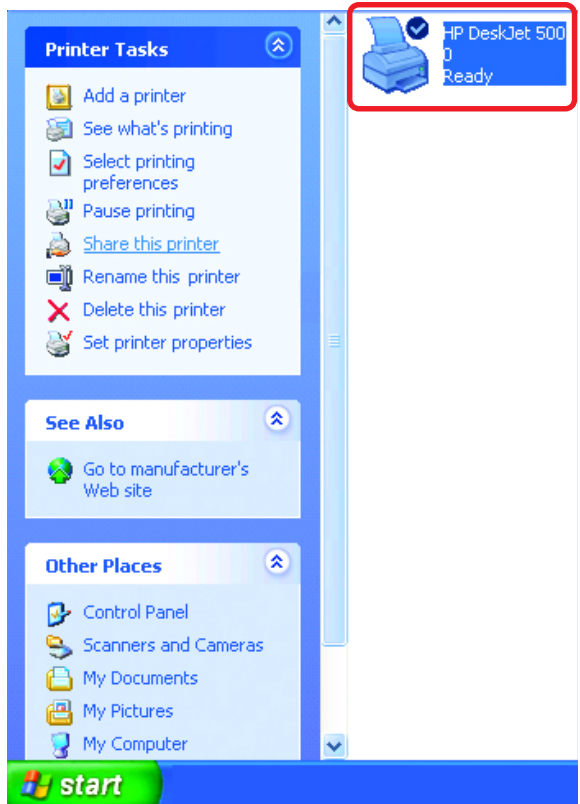
*The printer icon will appear at right, indicating proper installation.*

**You have completed adding the printer.**

*To share this printer on your network:*

- Remember the **printer name**
- Run the **Add Printer Wizard** on all the computers on your network
- Make sure you have already run the **Network Setup Wizard** on all the network computers

After you run the **Add Printer Wizard** on all the computers in the network, you can share the printer.



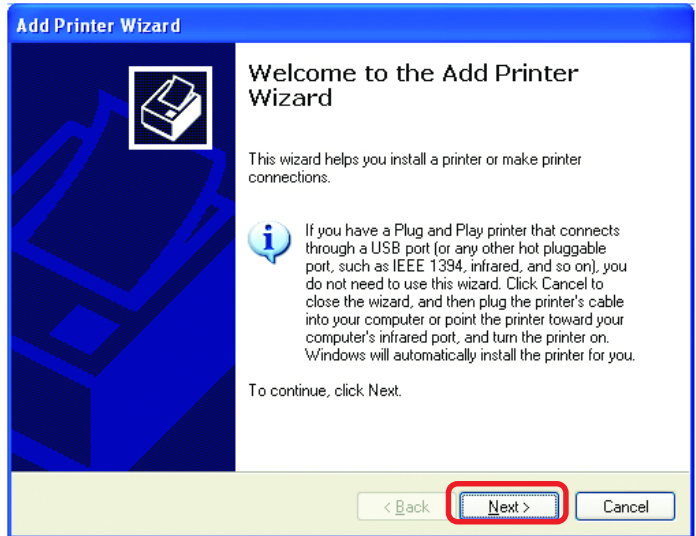
## Networking Basics

### Sharing an LPR printer

To share an **LPR printer** (using a print server,) you will need a Print Server such as the **DP-101P+**. Please make sure that you have run the **Network Setup Wizard** on all the computers on your network. To share an **LPR printer**, please follow these directions:

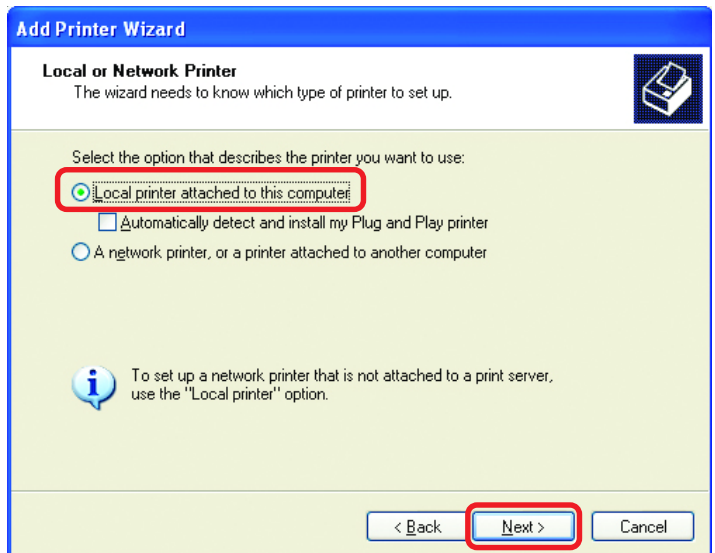
- Go to **Start > Printers and Faxes**
- Click on **Add a Printer**

The screen to the right will appear



- Click **Next**

- Select **Local Printer...**

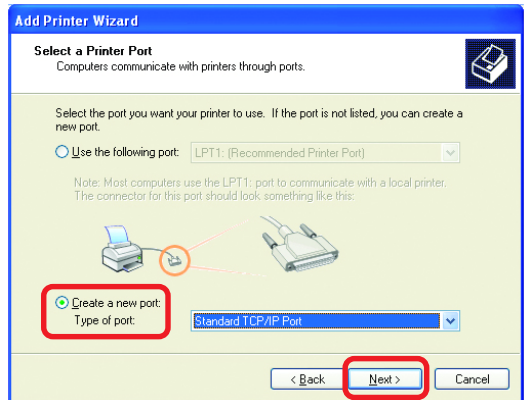


- Click **Next**

# Networking Basics

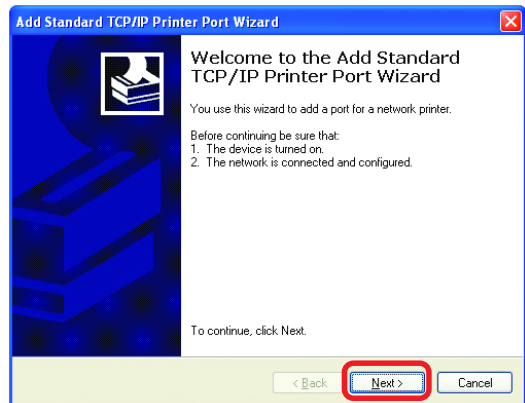
## Sharing an LPR printer

- Select **Create a new port**
- From the pull-down menu, select **Standard TCP/IP Port**, as shown.



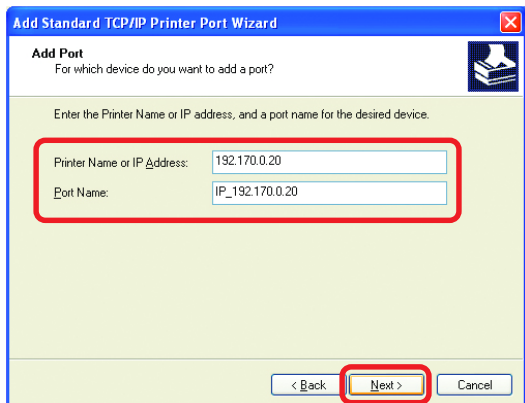
- Click **Next**

- Please read the instructions on this screen



- Click **Next**

- Enter the **Printer IP Address** and the **Port Name**, as shown.



- Click **Next**

## Networking Basics

### Sharing an LPR printer

- In this screen, select **Custom**

- Click **Settings**

**Add Standard TCP/IP Printer Port Wizard**

**Additional Port Information Required**  
The device could not be identified.

The detected device is of unknown type. Be sure that:

1. The device is properly configured.
2. The address on the previous page is correct.

Either correct the address and perform another search on the network by returning to the previous wizard page or select the device type if you are sure the address is correct.

Device Type

Standard Generic Network Card

Custom **Settings...**

< Back Next > Cancel

- Enter the **Port Name** and the **Printer Name** or **IP Address**.

- Select **LPR**

- Enter a **Queue Name** (if your Print-Server/ Gateway has more than one port, you will need a **Queue name**.)

- Click **OK**

**Configure Standard TCP/IP Port Monitor**

Port Settings

Port Name: IP\_192.170.0.20

Printer Name or IP Address: 192.170.0.20

Protocol

Raw  **LPR**

Raw Settings

Port Number: 9100

LPR Settings

Queue Name: lp

LPR Byte Counting Enabled

SNMP Status Enabled

Community Name: public

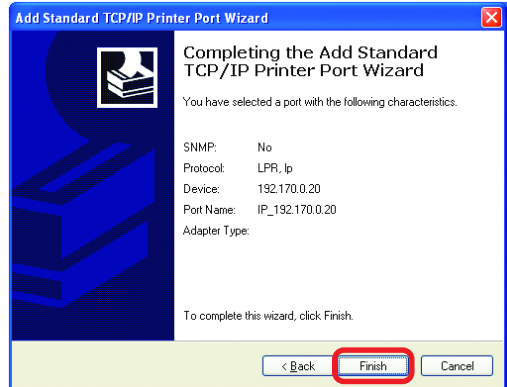
SNMP Device Index: 1

OK Cancel

# Networking Basics

## Sharing an LPR printer

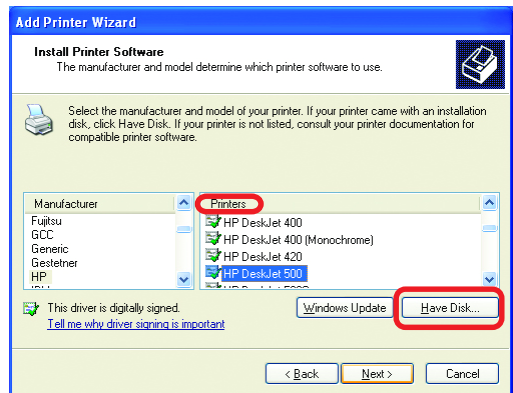
- This screen will show you information about your printer.



- Click **Finish**

- Select the **printer** you are adding from the list of **Printers**.

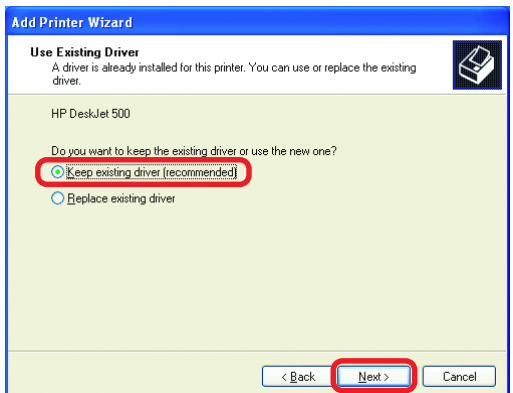
- Insert the printer driver disk that came with your printer.



- Click **Have Disk**

If the printer driver is already installed, do the following:

- Select **Keep existing driver**



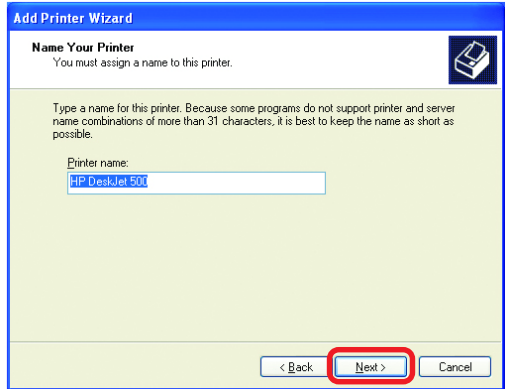
- Click **Next**



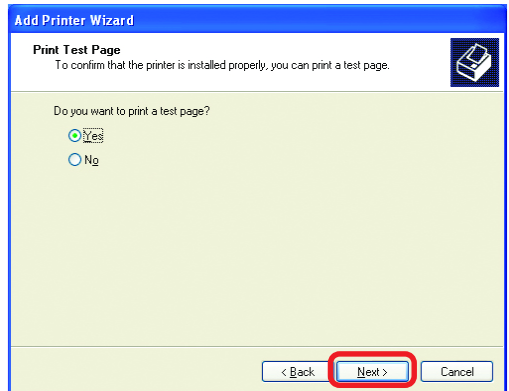
# Networking Basics

## Sharing an LPR printer

- You can rename your printer if you choose. It is optional.
- *Please remember the name of your printer. You will need this information when you use the **Add Printer Wizard** on the other computers on your network.*
- Click **Next**

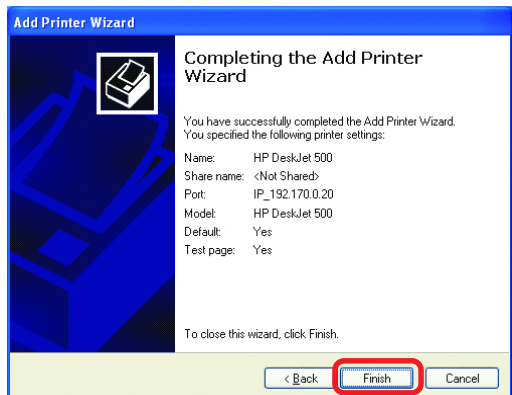


- Select **Yes**, to print a test page.
- Click **Next**



*This screen will display information about your printer.*

- Click **Finish** to complete the addition of the printer.
- Please run the **Add Printer Wizard** on all the computers on your network in order to share the printer.



*Note: You must run the **Network Setup Wizard** on all the computers on your network before you run the **Add Printer Wizard**.*

# Troubleshooting

This Chapter provides solutions to problems that can occur during the installation and operation of the DI-764 Wireless Broadband Router. We cover various aspects of the network setup, including the network adapters. Please read the following if you are having problems.

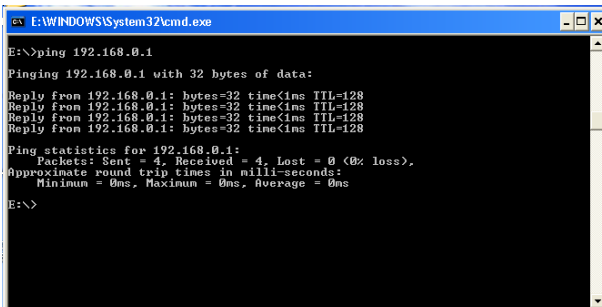
*Note: It is recommended that you use an Ethernet connection to configure the DI-764 Wireless Broadband Router.*

## 1. The computer used to configure the DI-764 cannot access the Configuration menu.

- Check that the **Ethernet LED** on the DI-764 is **ON**. If the **LED** is not **ON**, check that the cable for the Ethernet connection is securely inserted.
- Check that the Ethernet Adapter is working properly. Please see item 3 (**Check that the drivers for the network adapters are installed properly**) in this **Troubleshooting** section to check that the drivers are loaded properly.
- Check that the **IP Address** is in the same range and subnet as the DI-764. Please see **Checking the IP Address in Windows XP** in the **Networking Basics** section of this manual.

**Note: The IP Address of the DI-764 is 192.168.0.1. All the computers on the network must have a unique IP Address in the same range, e.g., 192.168.0.x. Any computers that have identical IP Addresses will not be visible on the network. They must all have the same subnet mask, e.g., 255.255.255.0**

- Do a **Ping test** to make sure that the DI-764 is responding. Go to **Start>Run>Type Command>Type ping 192.168.0.1**. A successful ping will show four replies.



```
E:\>ping 192.168.0.1
Pinging 192.168.0.1 with 32 bytes of data:
Reply from 192.168.0.1: bytes=32 time<1ms TTL=128
Reply from 192.168.0.1: bytes=32 time<1ms TTL=128
Reply from 192.168.0.1: bytes=32 time<1ms TTL=128
Reply from 192.168.0.1: bytes=32 time<1ms TTL=128

Ping statistics for 192.168.0.1:
    Packets: Sent = 4, Received = 4, Lost = 0 (0% loss),
    Approximate round trip times in milli-seconds:
        Minimum = 0ms, Maximum = 0ms, Average = 0ms

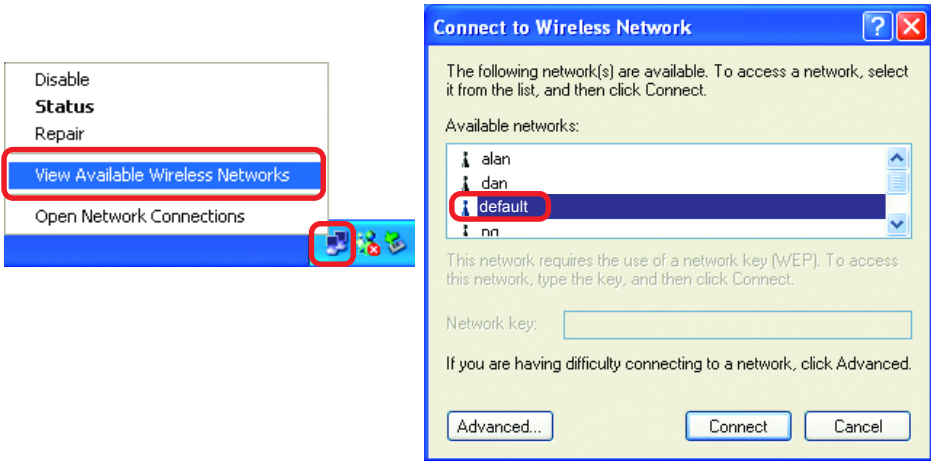
E:\>
```

*Note: If you have changed the default IP Address, make sure to ping the correct IP Address assigned to the DI-764.*

# Troubleshooting

## 2. The wireless client cannot access the Internet in the Infrastructure mode.

Make sure the wireless client is associated and joined with the correct Access Point. To check this connection: **Right-click** on the **Local Area Connection icon** in the taskbar > select **View Available Wireless Networks**. The **Connect to Wireless Network** screen will appear. Please make sure you have selected the correct available network, as shown in the illustrations below.

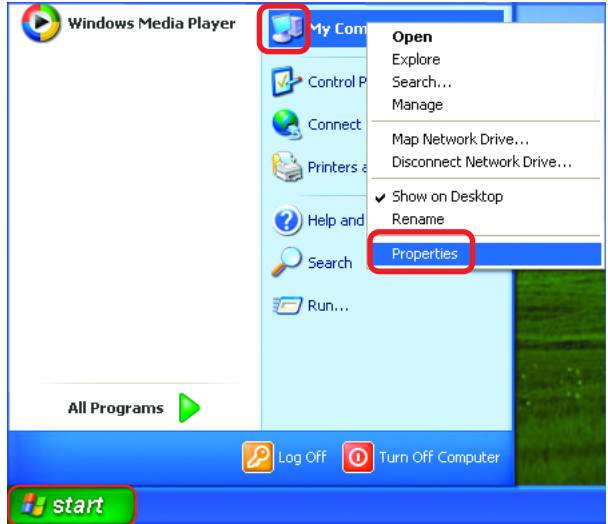


- Check that the **IP Address** assigned to the wireless adapter is within the same **IP Address range** as the access point and gateway. (Since the DI-764 has an IP Address of 192.168.0.1, wireless adapters must have an IP Address in the same range, e.g., 192.168.0.x. Each device must have a unique IP Address; no two devices may have the same IP Address. The subnet mask must be the same for all the computers on the network.) To check the **IP Address** assigned to the wireless adapter, **double-click** on the **Local Area Connection icon** in the taskbar > select the **Support tab** and the **IP Address** will be displayed. (Please refer to **Checking the IP Address in the Networking Basics** section of this manual.)
- If it is necessary to assign a **Static IP Address** to the wireless adapter, please refer to the appropriate section in **Networking Basics**. If you are entering a **DNS Server address** you must also enter the **Default Gateway Address**. (Remember that if you have a DHCP-capable router, you will not need to assign a Static IP Address. See **Networking Basics: Assigning a Static IP Address**.)

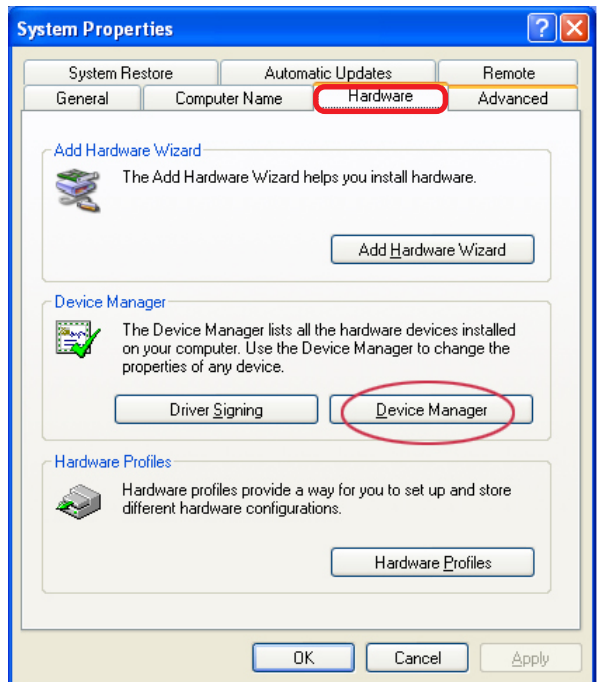
## Troubleshooting

### 3. Check that the drivers for the network adapters are installed properly.

You may be using different network adapters than those illustrated here, but this procedure will remain the same, regardless of the type of network adapters you are using.



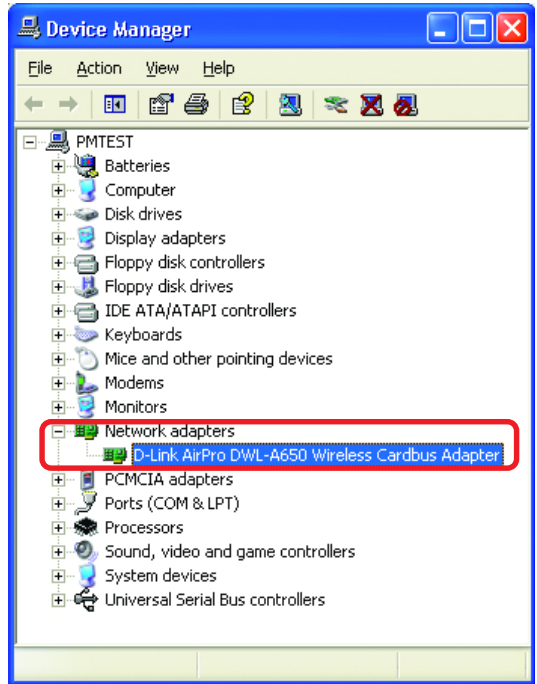
- Select the Hardware Tab



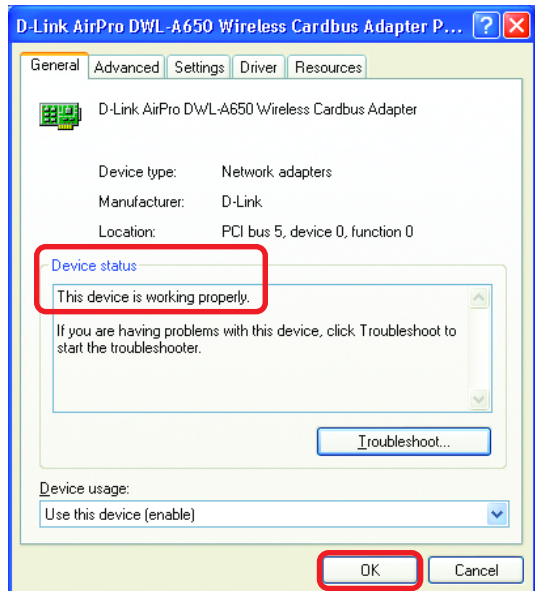
- Click Device Manager

# Troubleshooting

- Double-click on **Network Adapters**
- Right-click on **D-Link AirPro DWL-A650 Wireless Cardbus Adapter**
- Select **Properties** to check that the drivers are installed properly



- Look under **Device Status** to check that the device is working properly



- Click **OK**

## Troubleshooting

### 4. What variables may cause my wireless products to lose reception?

D-Link products let you access your network from virtually anywhere you want. However, the positioning of the products within your environment will affect the wireless range. Please refer to **Installation Considerations** in the **Wireless Basics** section of this manual for further information about the most advantageous placement of your D-Link wireless products.

### 5. Why does my wireless connection keep dropping?

- Antenna Orientation- Try different antenna orientations for the DI-764. Try to keep the antenna at least 6 inches away from the wall or other objects.
- If you are using 2.4GHz cordless phones, X-10 equipment or other home security systems, ceiling fans, and lights, your wireless connection will degrade dramatically or drop altogether. Try changing the Channel on your Router, Access Point and Wireless adapter to a different Channel to avoid interference.
- Keep your product away (at least 3-6 feet) from electrical devices that generate RF noise, like microwaves, Monitors, electric motors, etc.

### 6. Why can't I get a wireless connection?

To establish a wireless connection, while enabling Encryption on the DI-764, you must also enable encryption on the wireless client.

- For 802.11a, the Encryption settings are: 64, 128 or 152 bit. Make sure that the encryption bit level is the same on the Router and the Wireless Client.
- For 802.11b, the Encryption settings are: 64, 128, or 256 bit. Make sure that the encryption bit level is the same on the Router and the Wireless Client.

Make sure that the SSID on the Router and the Wireless Client are exactly the same. If they are not, wireless connection will not be established. Please note that there are two separate SSIDs for 802.11a and 802.11b. The default SSID for both 802.11a and 802.11b is **default**.

## Troubleshooting

### 7. Resetting the DI-764 to Factory Default Settings

After you have tried other methods for troubleshooting your network, you may choose to **Reset** the DI-764 to the factory default settings. Remember that D-Link *AirPro* products network together, out of the box, at the factory default settings.



To hard-reset the D-Link *AirPro* DI-764 to Factory Default Settings, please do the following:

- Locate the **Reset** button on the back of the DI-764
- Use a paper clip to press the **Reset** button
- Hold for about 10 seconds and then release
- After the DI-764 reboots (this may take a few minutes) it will be reset to the factory **Default** settings

# Technical Specifications

## Standards

- IEEE 802.11b
- IEEE 802.11a
- IEEE 802.3 and IEEE 802.3u
- IEEE 802.3x

## Ports

- (4) 10/100Base-T LAN Ports (auto-MDIX)
- (1) WAN Port
- (1) Power – 5V DC, 3A

## Network Management

- Web-Based Interface

## Network Architecture

- Supports Infrastructure Mode

## Diagnostic LED

- Power
- 100M Link/Act
- 10M Link/Act
- 11a WLAN
- 11b WLAN

## Range

- Indoors – up to 328 feet (100 meters)

## Temperature

- Operating: 0°C to 40°C (32°F to 104°F)
- Storing: -25°C to 60°C (-77°F to 140°F)



**Humidity:**

- 5%-95%, non-condensing

**Emissions:**

- FCC part 15b
- UL1950-3

**Physical Dimensions:**

- L = 9.25 inches
- W = 6.25 inches
- H = 1.50 inches

**802.11a Specifications****Data Rates:**

- 6, 9, 12, 18, 24, 36, 48, 54, 72 Mbps

**Data Security:**

- 64, 128, 152-bit w/dynamic keying
- Access Control List

**Antenna Type:**

- 5dBi dipole antenna with diversity
- Power parameter software configurable

**Available Channels:**

- Eight non-overlapping channels for North America

**Frequency Range:**

- 5.150 – 5.350 GHz

**Modulation Technology:**

- Orthogonal Frequency Division Multiplexing (OFDM)

**Antenna Type:**

- 5dBi dipole antenna with diversity

## **802.11a Specifications (continued)**

### **Modulation Techniques:**

- BPSK
- QPSK
- 16 QAM
- 64 QAM

## **802.11b Specifications**

### **Data Rates:**

- 1, 2, 5.5, 11, 22 Mbps (with Automatic Fallback)

### **Data Security:**

- 64, 128, 256-bit WEP (Wired Equivalent Privacy) Encryption

### **Available Channels:**

- Eleven channels for North America. Three non-overlapping.

### **Frequency Range:**

- 2.4 – 2.4835 GHz

### **Modulation Technology:**

- Direct Sequence Spread Spectrum (DSSS)
- Packet Binary Convolutional Coding (PBCC)
- 11-chip Barker sequence

### **Modulation Techniques:**

- Barker (1Mbps/0db)
- Barker (2Mbps/0db)
- PBCC (5.5Mbps/1.5db)
- CCK (11Mbps/8.5db)
- PBCC (11Mbps/4.5db)
- PBCC (22Mbps/8.5db)

# Contacting Technical Support

You can find the most recent software and user documentation on the D-Link website.

D-Link provides free technical support for customers within the United States for the duration of the warranty period on this product.

U.S. customers can contact D-Link technical support through our web site, or by phone.

## **D-Link Technical Support over the Telephone:**

(877) 453-5465

24 hours a day, seven days a week.

## **D-Link Technical Support over the Internet:**

<http://support.dlink.com>

*When contacting technical support, please provide the following information:*

- *Serial number of the unit*
- *Model number or product name*
- *Software type and version number*

# Warranty and Registration

Subject to the terms and conditions set forth herein, D-Link Systems, Inc. (“D-Link”) provides this Limited warranty for its product only to the person or entity that originally purchased the product from:

- D-Link or its authorized reseller or distributor and
- Products purchased and delivered within the fifty states of the United States, the District of Columbia, U.S. Possessions or Protectorates, U.S. Military Installations, addresses with an APO or FPO.

**Limited Warranty:** D-Link warrants that the hardware portion of the D-Link products described below will be free from material defects in workmanship and materials from the date of original retail purchase of the product, for the period set forth below applicable to the product type (“Warranty Period”), except as otherwise stated herein.

3-Year Limited Warranty for the Product(s) is defined as follows:

- Hardware (excluding power supplies and fans) Three (3) Years
- Power Supplies and Fans One (1) Year
- Spare parts and spare kits Ninety (90) days

D-Link’s sole obligation shall be to repair or replace the defective Hardware during the Warranty Period at no charge to the original owner or to refund at D-Link’s sole discretion. Such repair or replacement will be rendered by D-Link at an Authorized D-Link Service Office. The replacement Hardware need not be new or have an identical make, model or part. D-Link may in its sole discretion replace the defective Hardware (or any part thereof) with any reconditioned product that D-Link reasonably determines is substantially equivalent (or superior) in all material respects to the defective Hardware. Repaired or replacement Hardware will be warranted for the remainder of the original Warranty Period from the date of original retail purchase. If a material defect is incapable of correction, or if D-Link determines in its sole discretion that it is not practical to repair or replace the defective Hardware, the price paid by the original purchaser for the defective Hardware will be refunded by D-Link upon return to D-Link of the defective Hardware. All Hardware (or part thereof) that is replaced by D-Link, or for which the purchase price is refunded, shall become the property of D-Link upon replacement or refund.

**Limited Software Warranty:** D-Link warrants that the software portion of the product (“Software”) will substantially conform to D-Link’s then current functional specifications for the Software, as set forth in the applicable documentation, from the date of original retail purchase of the Software for a period of ninety (90) days (“Warranty Period”), provided that the Software is properly installed on approved hardware and operated as contemplated in its documentation. D-Link further warrants that, during the Warranty Period, the magnetic media on which D-Link delivers the Software will be free of physical defects. D-Link’s sole obligation shall be to replace the non-conforming Software (or defective media) with software that substantially conforms to D-Link’s functional specifications for the Software or to refund at D-Link’s sole discretion. Except as otherwise agreed by D-Link in writing, the replacement Software is provided only to the original licensee, and is subject to the terms and conditions of the license granted by D-Link for the Software. Software will be warranted for the remainder of the original Warranty Period from the date of original retail purchase. If a material non-conformance is incapable of correction, or if D-Link determines in its sole discretion that it is not practical to replace the non-conforming Software, the price paid by the original licensee for the non-conforming Software will be refunded by D-Link; provided that the non-conforming Software (and all copies thereof) is first returned to D-Link. The license granted respecting any Software for which a refund is given automatically terminates.

**Non-Applicability of Warranty:** The Limited Warranty provided hereunder for hardware and software of D-Link’s products will not be applied to and does not cover any refurbished product and any product purchased through the inventory clearance or liquidation sale or other sales in which D-Link, the sellers, or the liquidators expressly disclaim their warranty obligation pertaining to the product and in that case, the product is being sold “As-Is” without any warranty whatsoever including, without limitation, the Limited Warranty as described herein, notwithstanding anything stated herein to the contrary.

**Submitting A Claim:** The customer shall return the product to the original purchase point based on its return policy. In case the return policy period has expired and the product is within warranty, the customer shall submit a claim to D-Link as outlined below:

- The customer must submit with the product as part of the claim a written description of the Hardware defect or Software nonconformance in sufficient detail to allow D-Link to confirm the same.

- The original product owner must obtain a Return Material Authorization (“RMA”) number from the Authorized D-Link Service Office and, if requested, provide written proof of purchase of the product (such as a copy of the dated purchase invoice for the product) before the warranty service is provided.
- After an RMA number is issued, the defective product must be packaged securely in the original or other suitable shipping package to ensure that it will not be damaged in transit, and the RMA number must be prominently marked on the outside of the package. Do not include any manuals or accessories in the shipping package. D-Link will only replace the defective portion of the Product and will not ship back any accessories.
- The customer is responsible for all in-bound shipping charges to D-Link. No Cash on Delivery (“COD”) is allowed. Products sent COD will either be rejected by D-Link or become the property of D-Link. Products shall be fully insured by the customer and shipped to **D-Link Systems, Inc., 53 Discovery Drive, Irvine, CA 92618**. D-Link will not be held responsible for any packages that are lost in transit to D-Link. The repaired or replaced packages will be shipped to the customer via UPS Ground or any common carrier selected by D-Link, with shipping charges prepaid. Expedited shipping is available if shipping charges are prepaid by the customer and upon request.

D-Link may reject or return any product that is not packaged and shipped in strict compliance with the foregoing requirements, or for which an RMA number is not visible from the outside of the package. The product owner agrees to pay D-Link’s reasonable handling and return shipping charges for any product that is not packaged and shipped in accordance with the foregoing requirements, or that is determined by D-Link not to be defective or non-conforming.

**What Is Not Covered:** This limited warranty provided by D-Link does not cover: Products, if in D-Link’s judgment, have been subjected to abuse, accident, alteration, modification, tampering, negligence, misuse, faulty installation, lack of reasonable care, repair or service in any way that is not contemplated in the documentation for the product, or if the model or serial number has been altered, tampered with, defaced or removed; Initial installation, installation and removal of the product for repair, and shipping costs; Operational adjustments covered in the operating manual for the product, and normal maintenance; Damage that occurs in shipment, due to act of God, failures due to power surge, and cosmetic damage; Any hardware, software, firmware or other products or services provided by anyone other than D-Link; Products that have been purchased from inventory clearance or liquidation sales or other sales in which D-Link, the sellers, or the liquidators expressly disclaim their warranty obligation pertaining to the product. Repair by anyone other than D-Link or an Authorized D-Link Service Office will void this Warranty.

**Disclaimer of Other Warranties:** EXCEPT FOR THE LIMITED WARRANTY SPECIFIED HEREIN, THE PRODUCT IS PROVIDED “AS-IS” WITHOUT ANY WARRANTY OF ANY KIND WHATSOEVER INCLUDING, WITHOUT LIMITATION, ANY WARRANTY OF MERCHANTABILITY, FITNESS FOR A PARTICULAR PURPOSE AND NON-INFRINGEMENT. IF ANY IMPLIED WARRANTY CANNOT BE DISCLAIMED IN ANY TERRITORY WHERE A PRODUCT IS SOLD, THE DURATION OF SUCH IMPLIED WARRANTY SHALL BE LIMITED TO NINETY (90) DAYS. EXCEPT AS EXPRESSLY COVERED UNDER THE LIMITED WARRANTY PROVIDED HEREIN, THE ENTIRE RISK AS TO THE QUALITY, SELECTION AND PERFORMANCE OF THE PRODUCT IS WITH THE PURCHASER OF THE PRODUCT.

**Limitation of Liability:** TO THE MAXIMUM EXTENT PERMITTED BY LAW, D-LINK IS NOT LIABLE UNDER ANY CONTRACT, NEGLIGENCE, STRICT LIABILITY OR OTHER LEGAL OR EQUITABLE THEORY FOR ANY LOSS OF USE OF THE PRODUCT, INCONVENIENCE OR DAMAGES OF ANY CHARACTER, WHETHER DIRECT, SPECIAL, INCIDENTAL OR CONSEQUENTIAL (INCLUDING, BUT NOT LIMITED TO, DAMAGES FOR LOSS OF GOODWILL, LOSS OF REVENUE OR PROFIT, WORK STOPPAGE, COMPUTER FAILURE OR MALFUNCTION, FAILURE OF OTHER EQUIPMENT OR COMPUTER PROGRAMS TO WHICH D-LINK’S PRODUCT IS CONNECTED WITH, LOSS OF INFORMATION OR DATA CONTAINED IN, STORED ON, OR INTEGRATED WITH ANY PRODUCT RETURNED TO D-LINK FOR WARRANTY SERVICE) RESULTING FROM THE USE OF THE PRODUCT, RELATING TO WARRANTY SERVICE, OR ARISING OUT OF ANY BREACH OF THIS LIMITED WARRANTY, EVEN IF D-LINK HAS BEEN ADVISED OF THE POSSIBILITY OF SUCH DAMAGES. THE SOLE REMEDY FOR A BREACH OF THE FOREGOING LIMITED WARRANTY IS REPAIR, REPLACEMENT OR REFUND OF THE DEFECTIVE OR NON-CONFORMING PRODUCT. THE MAXIMUM LIABILITY OF D-LINK UNDER THIS WARRANTY IS LIMITED TO THE PURCHASE PRICE OF THE PRODUCT COVERED BY THE WARRANTY. THE FOREGOING EXPRESS WRITTEN WARRANTIES AND REMEDIES ARE EXCLUSIVE AND ARE IN LIEU OF ANY OTHER WARRANTIES OR REMEDIES, EXPRESS, IMPLIED OR STATUTORY

**Governing Law:** This Limited Warranty shall be governed by the laws of the State of California. Some states do not allow exclusion or limitation of incidental or consequential damages, or limitations on how long an implied warranty lasts, so the foregoing limitations and exclusions may not apply. This limited warranty provides specific legal rights and the product owner may also have other rights which vary from state to state.

**Trademarks:** D-Link is a registered trademark of D-Link Systems, Inc. Other trademarks or registered trademarks are the property of their respective manufacturers or owners.

**Copyright Statement:** No part of this publication or documentation accompanying this Product may be reproduced in any form or by any means or used to make any derivative such as translation, transformation, or adaptation without permission from D-Link Corporation/D-Link Systems, Inc., as stipulated by the United States Copyright Act of 1976. Contents are subject to change without prior notice. Copyright© 2002 by D-Link Corporation/D-Link Systems, Inc. All rights reserved.

**CE Mark Warning:** This is a Class B product. In a domestic environment, this product may cause radio interference, in which case the user may be required to take adequate measures.

**FCC Statement:** This equipment has been tested and found to comply with the limits for a Class B digital device, pursuant to part 15 of the FCC Rules. These limits are designed to provide reasonable protection against harmful interference in a residential installation. This equipment generates, uses, and can radiate radio frequency energy and, if not installed and used in accordance with the instructions, may cause harmful interference to radio communication. However, there is no guarantee that interference will not occur in a particular installation. If this equipment does cause harmful interference to radio or television reception, which can be determined by turning the equipment off and on, the user is encouraged to try to correct the interference by one or more of the following measures:

- Reorient or relocate the receiving antenna.
- Increase the separation between the equipment and receiver.
- Connect the equipment into an outlet on a circuit different from that to which the receiver is connected.
- Consult the dealer or an experienced radio/TV technician for help.

**FCC Caution:** Any changes or modifications not expressly approved by the party responsible for compliance could void the user's authority to operate this equipment.

The Manufacturer is not responsible for any radio or TV interference caused by unauthorized modifications to this equipment; such modifications could void the user's authority to operate the equipment.

(1) The devices are restricted to indoor operations within the 5.15 to 5.25GHz range. (2) For this device to operate in the 5.15 to 5.25GHz range, the devices must use integral antennas.

This device complies with Part 15 of the FCC Rules. Operation is subject to the following two conditions: (1) This device may not cause harmful interference, and (2) this device must accept any interference received, including interference that may cause undesired operation.

**IMPORTANT NOTE:**

**FCC Radiation Exposure Statement:**

This equipment complies with FCC radiation exposure limits set forth for an uncontrolled environment. The antenna(s) used for this equipment must be installed to provide a separation distance of at least eight inches (20 cm) from all persons.

This transmitter must not be operated in conjunction with any other antenna.

Register online your D-Link product at <http://support.dlink.com/register/>