

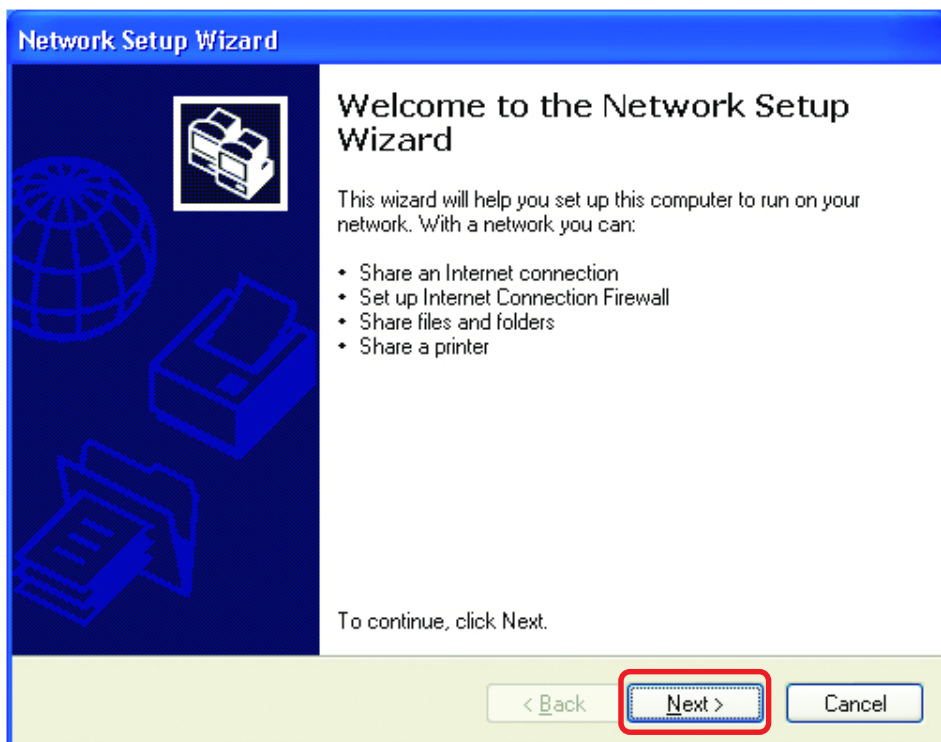
Networking Basics

Using the Network Setup Wizard in Windows XP

In this section you will learn how to establish a network at home or work, using **Microsoft Windows XP**.

Note: Please refer to websites such as <http://www.homenethelp.com> and <http://www.microsoft.com/windows2000> for information about networking computers using Windows 2000, ME or 98.

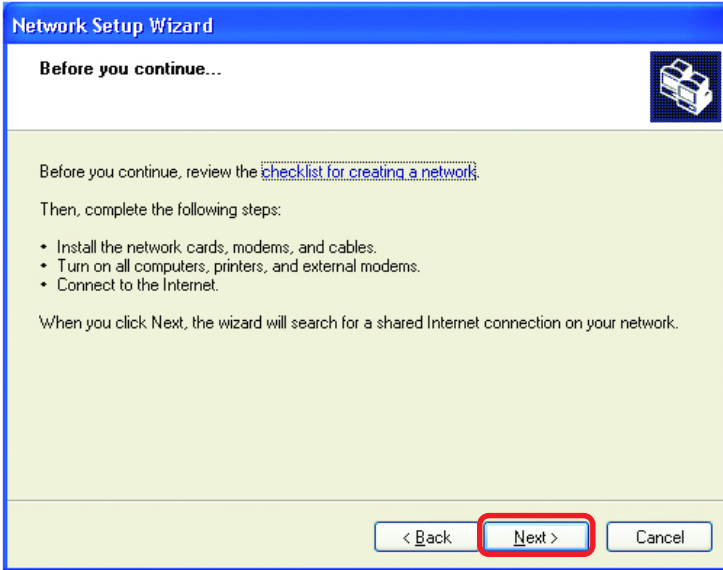
Go to **Start>Control Panel>Network Connections**
Select **Set up a home or small office network**



When this screen appears, **Click Next.**

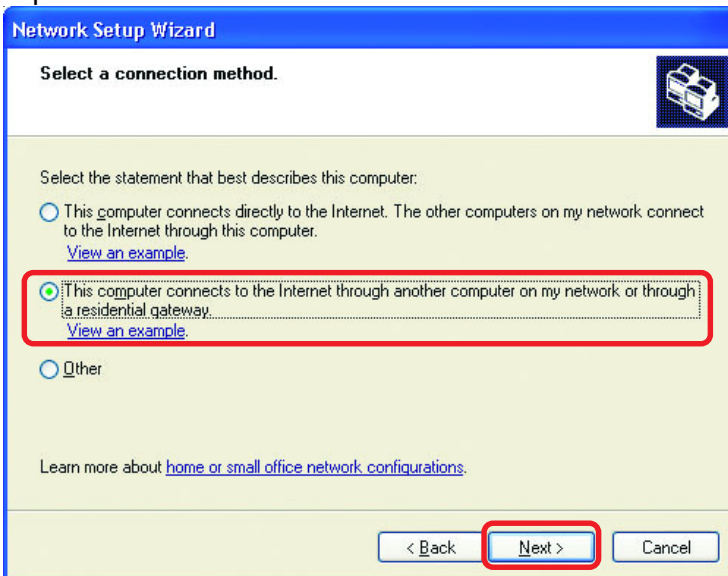
Networking Basics

Please follow all the instructions in this window:



Click **Next**

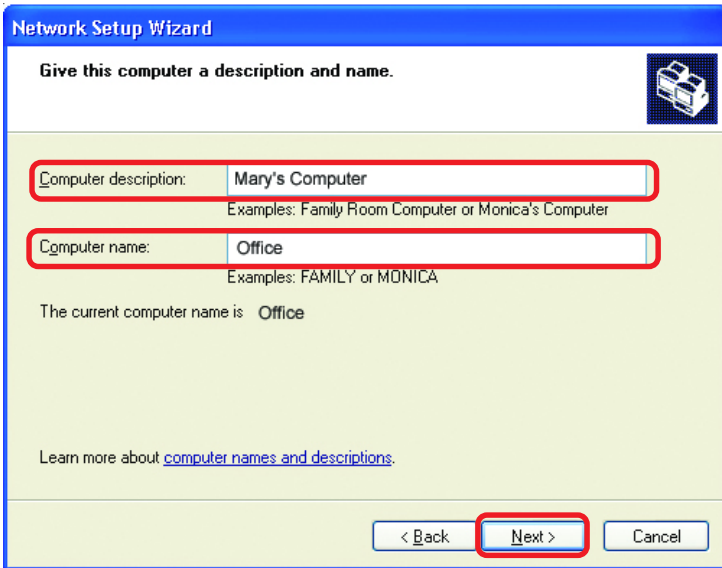
In the following window, select the best description of your computer. If your computer connects to the internet through a gateway/router, select the second option as shown.



Click **Next**

Networking Basics

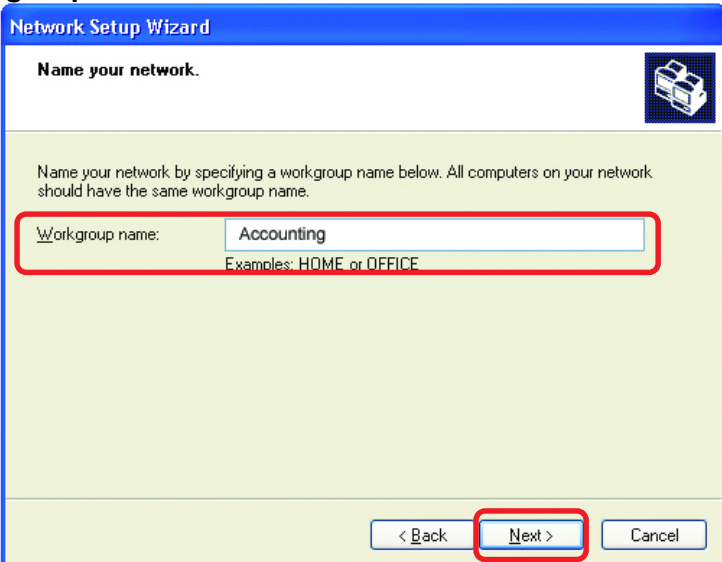
Enter a **Computer description** and a **Computer name** (optional.)



The screenshot shows the 'Network Setup Wizard' dialog box. The title bar reads 'Network Setup Wizard'. The main heading is 'Give this computer a description and name.' Below this, there are two text input fields. The first is labeled 'Computer description:' and contains the text 'Mary's Computer'. Below it, smaller text says 'Examples: Family Room Computer or Monica's Computer'. The second field is labeled 'Computer name:' and contains the text 'Office'. Below it, smaller text says 'Examples: FAMILY or MONICA'. Below the fields, it says 'The current computer name is Office'. At the bottom, there are three buttons: '< Back', 'Next >', and 'Cancel'. The 'Next >' button is highlighted with a red rectangle.

Click **Next**

Enter a **Workgroup** name. All computers on your network should have the same **Workgroup name**.

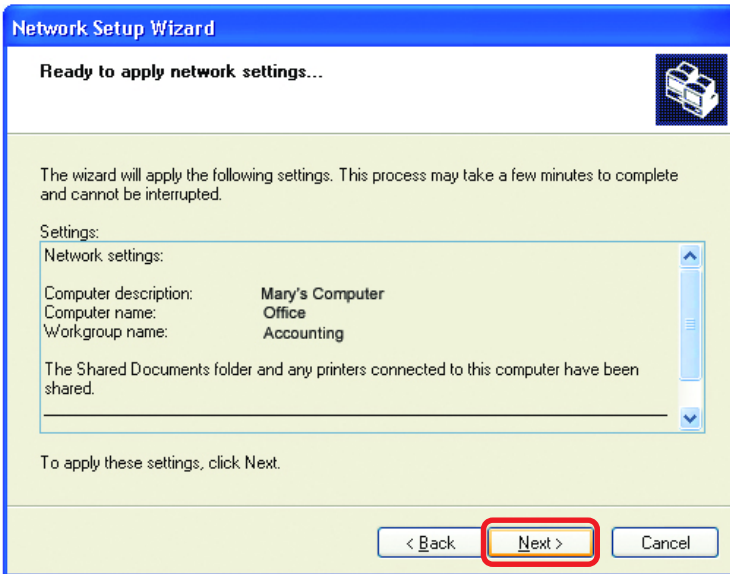


The screenshot shows the 'Network Setup Wizard' dialog box. The title bar reads 'Network Setup Wizard'. The main heading is 'Name your network.' Below this, there is a text input field labeled 'Workgroup name:' containing the text 'Accounting'. Below the field, smaller text says 'Examples: HOME or OFFICE'. At the bottom, there are three buttons: '< Back', 'Next >', and 'Cancel'. The 'Next >' button is highlighted with a red rectangle.

Click **Next**

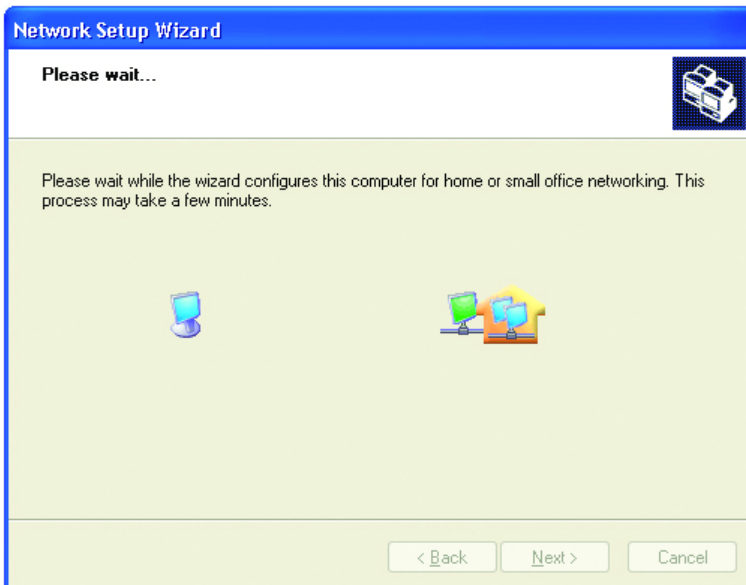
Networking Basics

Please wait while the **Network Setup Wizard** applies the changes.



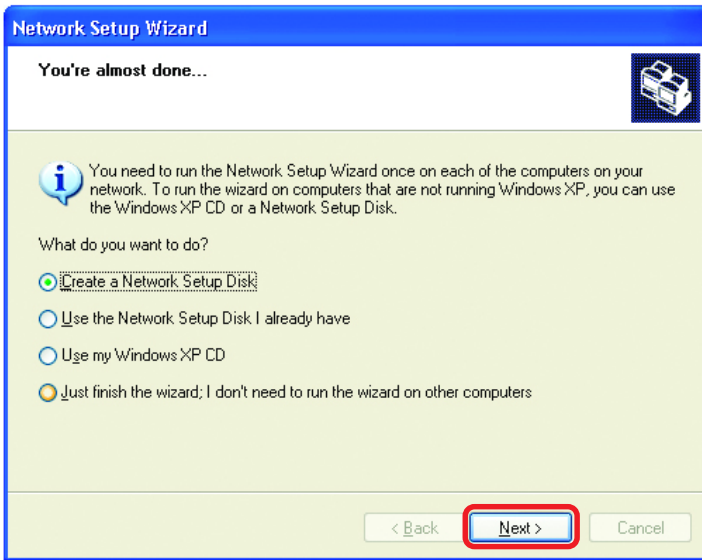
When the changes are complete, click **Next**.

Please wait while the **Network Setup Wizard** configures the computer. This may take a few minutes.

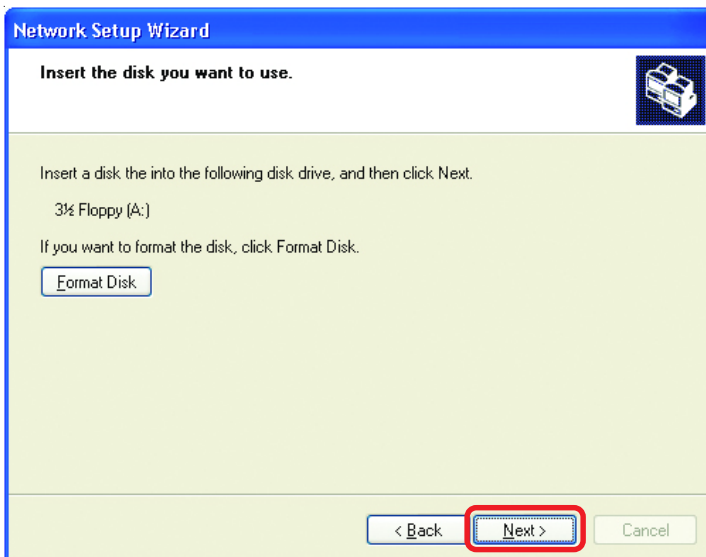


Networking Basics

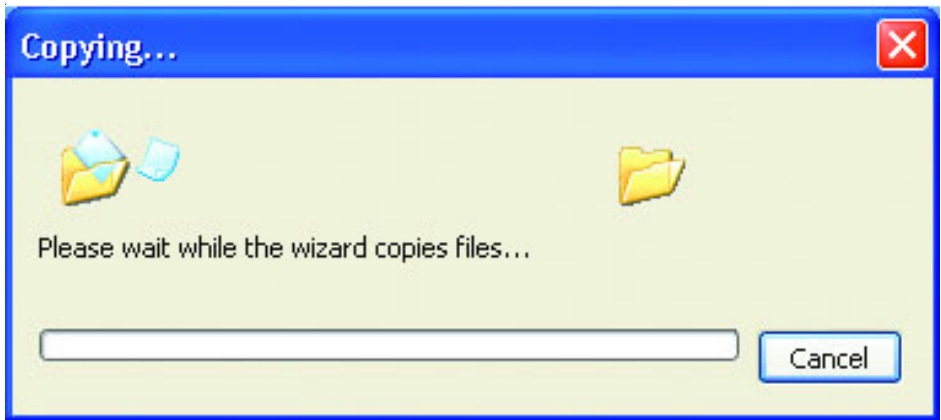
In the window below, select the option that fits your needs. In this example, **Create a Network Setup Disk** has been selected. You will run this disk on each of the computers on your network. Click **Next**.



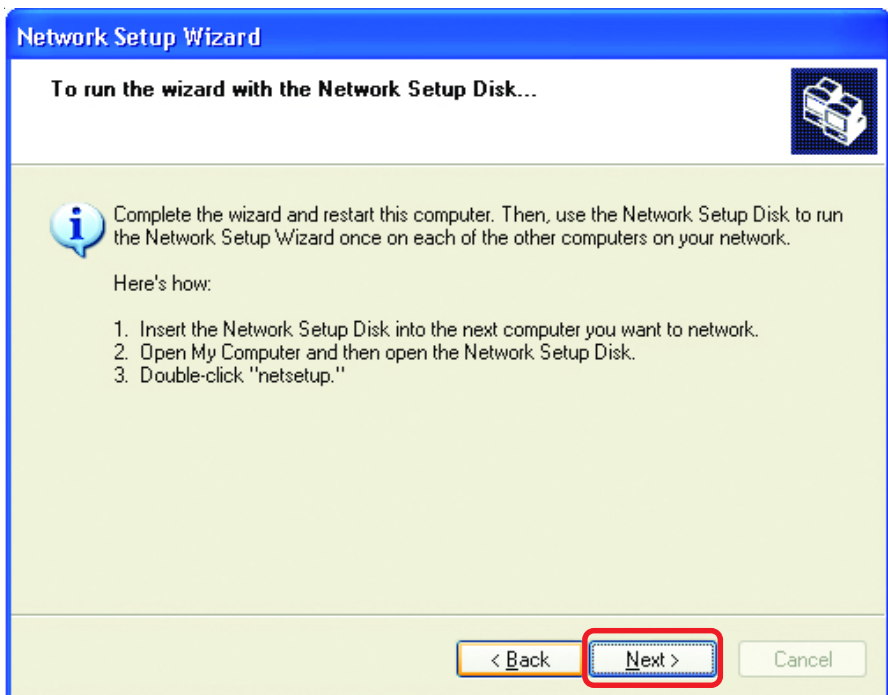
Insert a disk into the Floppy Disk Drive, in this case drive **A**.



Networking Basics

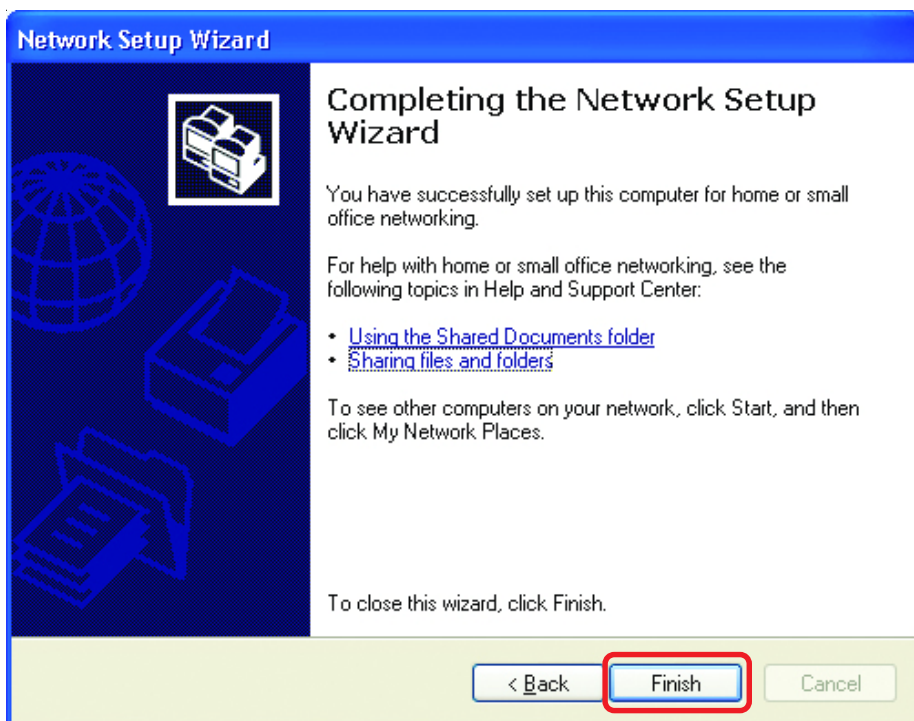


Please read the information under **Here's how** in the screen below. After you complete the **Network Setup Wizard** you will use the **Network Setup Disk** to run the **Network Setup Wizard** once on each of the computers on your network. To continue click **Next**.

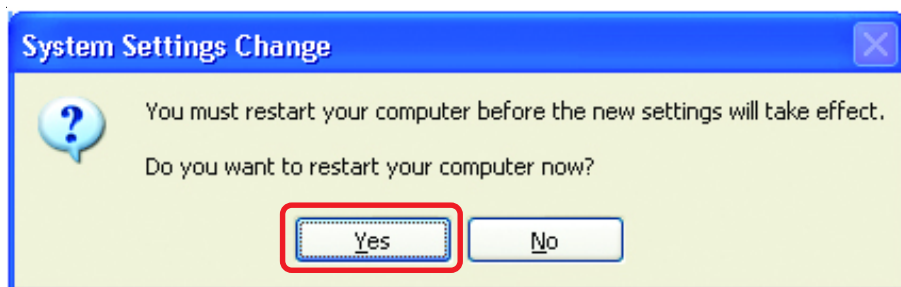


Networking Basics

Please read the information on this screen, then click **Finish** to complete the **Network Setup Wizard**.



The new settings will take effect when you restart the computer. Click **Yes** to restart the computer.



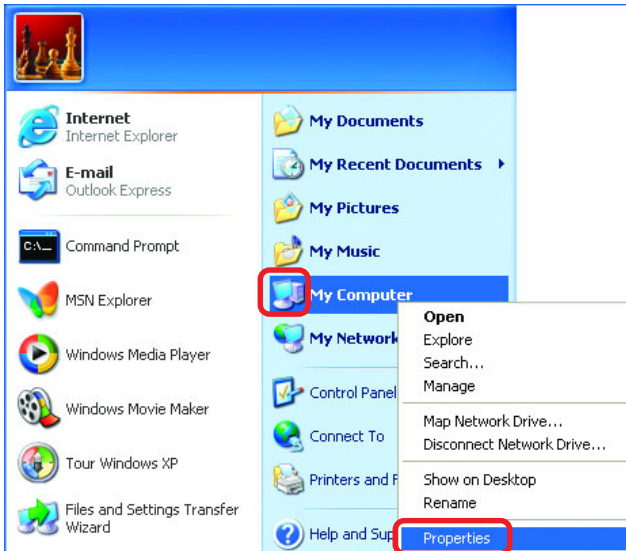
You have completed configuring this computer. Next, you will need to run the **Network Setup Disk** on all the other computers on your network. After running the **Network Setup Disk** on all your computers, your new wireless network will be ready to use.

Networking Basics

Naming your Computer

To name your computer, please follow these directions: In **Windows XP**:

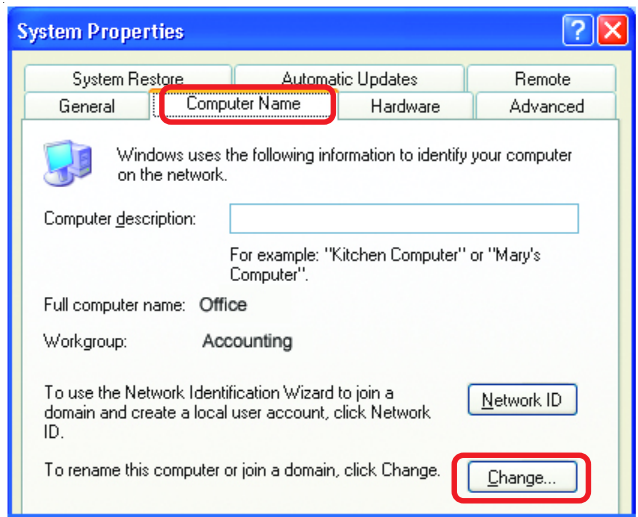
- Click **Start** (in the lower left corner of the screen)
- **Right-click on My Computer**
- Select **Properties** and click



- Select the **Computer Name Tab** in the System Properties window.

- You may enter a **Computer Description** if you wish; this field is optional.

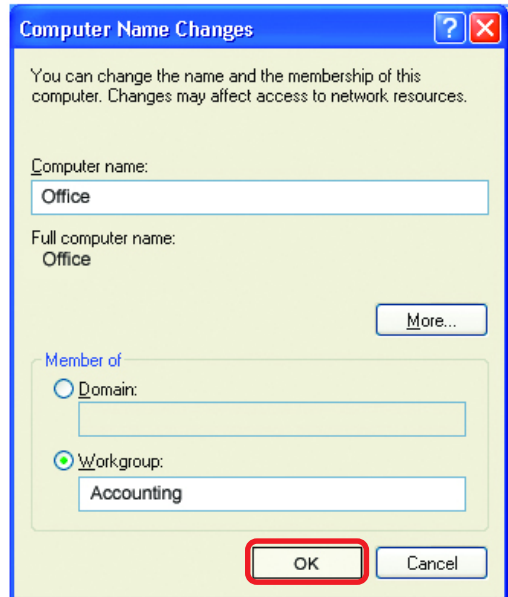
- To rename the computer and join a domain, Click **Change**.



Networking Basics

Naming your Computer

- In this window, enter the **Computer name**
- Select **Workgroup** and enter the name of the **Workgroup**
- All computers on your network must have the same **Workgroup** name.
- Click **OK**



Checking the IP Address in Windows XP

The wireless adapter-equipped computers in your network must be in the same IP Address range (see Getting Started in this manual for a definition of IP Address Range.) To check on the IP Address of the adapter, please do the following:

- Right-click on the **Local Area Connection icon** in the task bar
- Click on **Status**



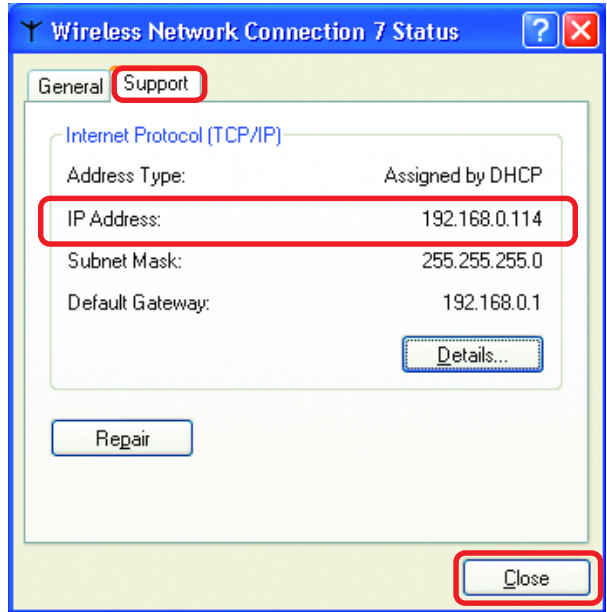
Networking Basics

Checking the IP Address in Windows XP

This window will appear.

- Click the **Support** tab

- Click **Close**



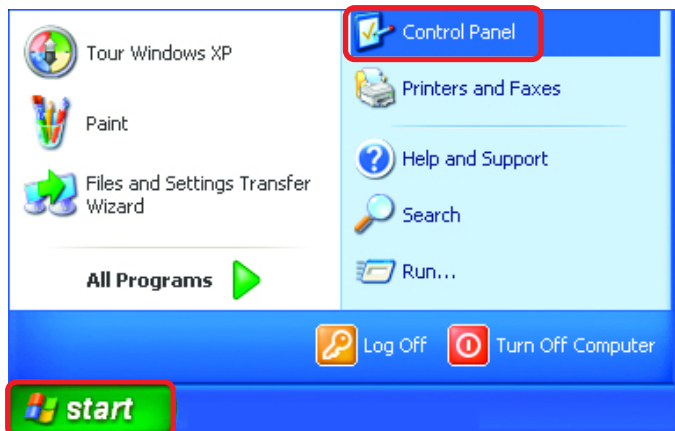
Assigning a Static IP Address in Windows XP/2000

Note: Residential Gateways/Broadband Routers will automatically assign IP Addresses to the computers on the network, using DHCP (Dynamic Host Configuration Protocol) technology. If you are using a DHCP-capable Gateway/Router you will not need to assign Static IP Addresses.

If you are not using a DHCP capable Gateway/Router, or you need to assign a Static IP Address, please follow these instructions:

- Go to **Start**

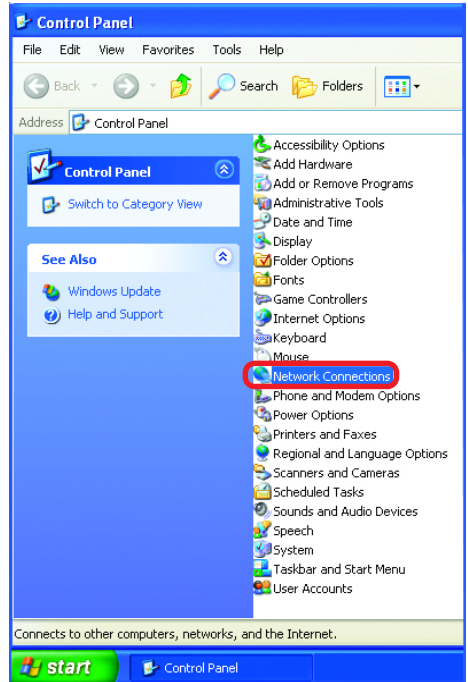
- Double-click on **Control Panel**



Networking Basics

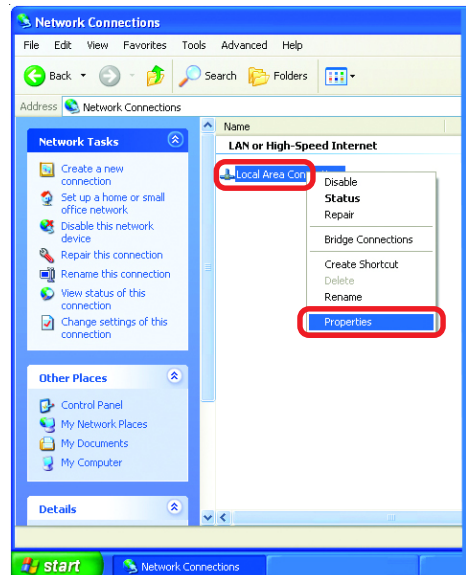
Assigning a Static IP Address in Windows XP/2000

- Double-click on **Network Connections**



- Right-click on **Local Area Connections**

- Double-click on **Properties**

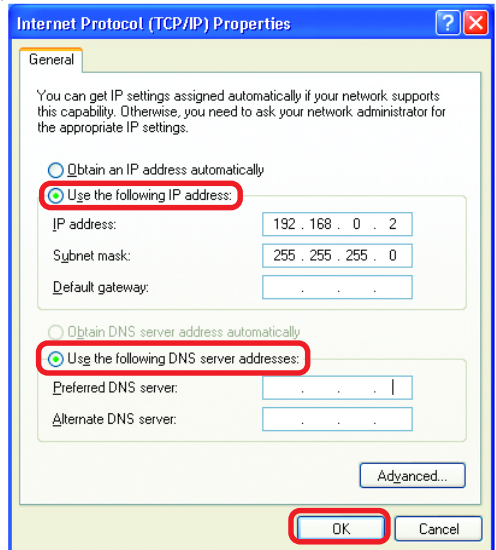
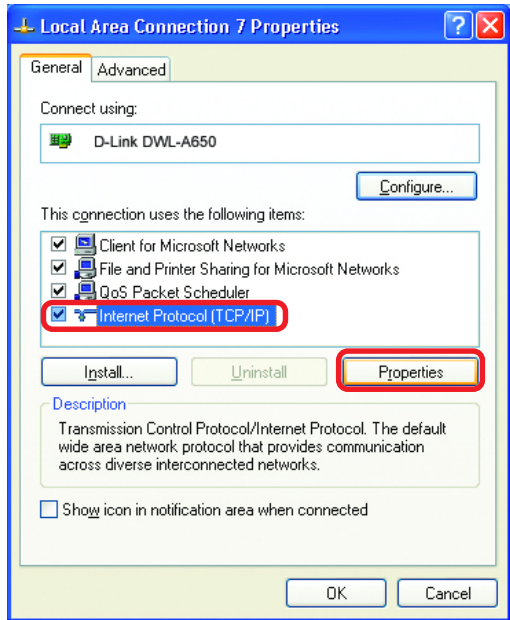


Networking Basics

Assigning a Static IP Address in Windows XP/2000

- Click on **Internet Protocol (TCP/IP)**
- Click **Properties**

- Input your **IP address and subnet mask**. (The IP Addresses on your network must be within the same range. For example, if one computer has an IP Address of 192.168.0.2, the other computers should have IP Addresses that are sequential, like 192.168.0.3 and 192.168.0.4. The subnet mask must be the same for all the computers on the network.)
- Input your **DNS server addresses**. (Note: If you are entering a DNS server, you must enter the IP Address of the Default Gateway.)



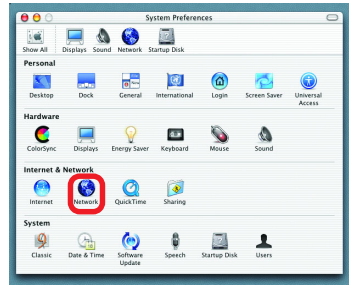
The DNS server address will be supplied by your ISP (Internet Service Provider). If the DNS Server address is not available from your ISP, you may input 192.168.0.1 in this field.

- Click **OK**

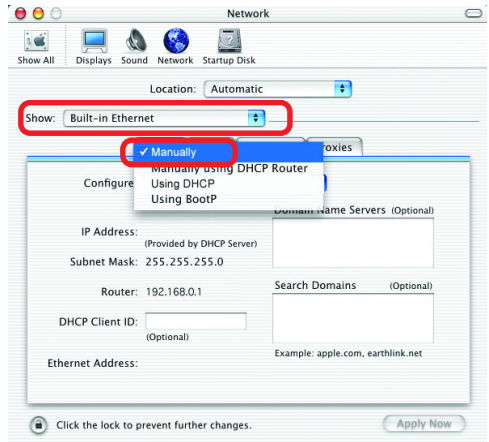
Networking Basics

Assigning a Static IP Address with Macintosh OSX

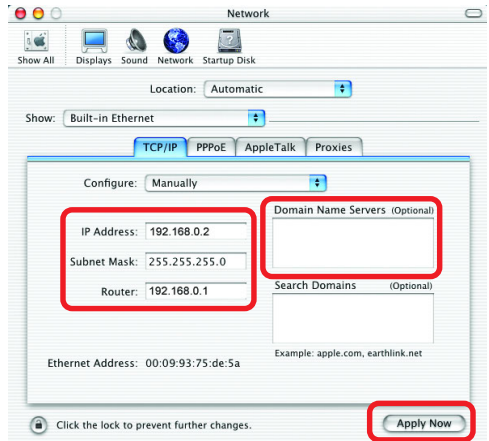
- Go to the **Apple Menu** and select **System Preferences**
- Click on **Network**



- Select **Built-in Ethernet** in the **Show** pull-down menu
- Select **Manually** in the **Configure** pull-down menu



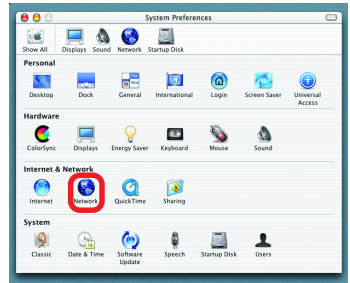
- Input the **Static IP Address**, the **Subnet Mask** and the **Router IP Address** in the appropriate fields
- Input the **Domain Name Server** address. Your ISP (Internet Service Provider) will provide the IP address of the DNS Server. If the DNS Server address is not available from your ISP, you may input 192.168.0.1 in this field.
- Click **Apply Now**



Networking Basics

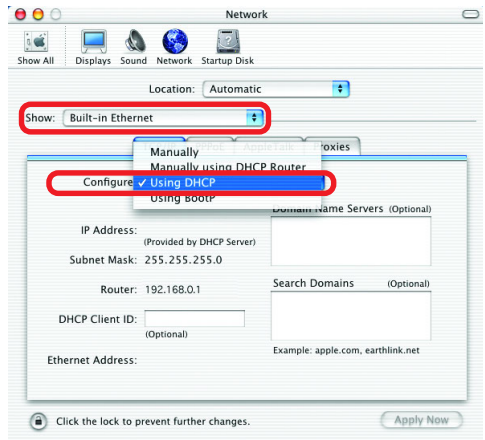
Selecting a Dynamic IP Address with Macintosh OS X

- Go to the **Apple Menu** and select **System Preferences**



- Click on **Network**

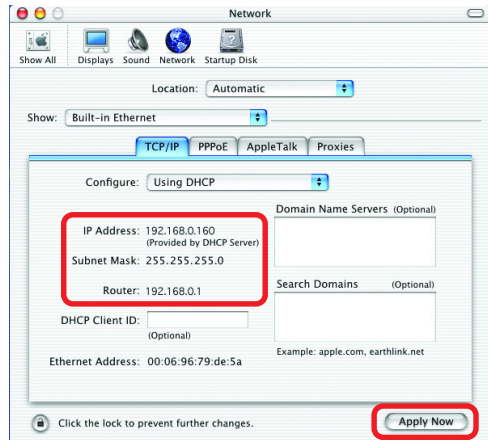
- Select **Built-in Ethernet** in the **Show** pull-down menu



- Select **Using DHCP** in the **Configure** pull-down menu

- Click **Apply Now**

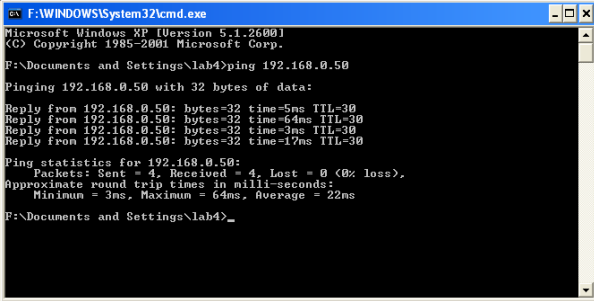
- The **IP Address**, **Subnet mask**, and the **Router's IP Address** will appear in a few seconds



Networking Basics

Checking the Wireless Connection by Pinging in Windows XP and 2000

- Go to **Start > Run >** type **cmd**. A window similar to this one will appear. Type **ping xxx.xxx.xxx.xxx**, where **xxx** is the **IP Address** of the Wireless Router or Access Point. A good wireless connection will show four replies from the Wireless Router or Access Point, as shown.



```
F:\WINDOWS\System32\cmd.exe
Microsoft Windows XP [Version 5.1.2600]
(C) Copyright 1985-2001 Microsoft Corp.
F:\Documents and Settings\lab4>ping 192.168.0.50

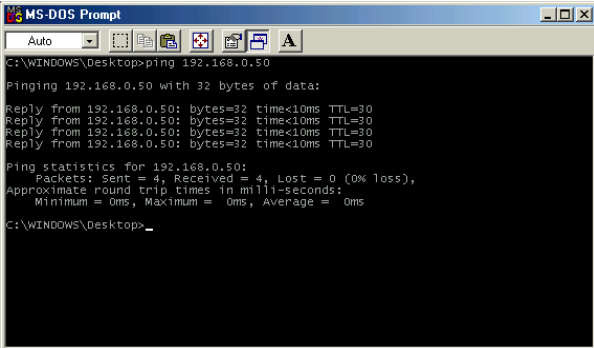
Pinging 192.168.0.50 with 32 bytes of data:

Reply from 192.168.0.50: bytes=32 time=5ms TTL=30
Reply from 192.168.0.50: bytes=32 time=64ms TTL=30
Reply from 192.168.0.50: bytes=32 time=3ms TTL=30
Reply from 192.168.0.50: bytes=32 time=17ms TTL=30

Ping statistics for 192.168.0.50:
    Packets: Sent = 4, Received = 4, Lost = 0 (0% loss),
    Approximate round trip times in milli-seconds:
        Minimum = 3ms, Maximum = 64ms, Average = 22ms
F:\Documents and Settings\lab4>_
```

Checking the Wireless Connection by Pinging in Windows Me and 98

- Go to **Start > Run >** type **command**. A window similar to this will appear. Type **ping xxx.xxx.xxx.xxx** where **xxx** is the **IP Address** of the Wireless Router or Access Point. A good wireless connection will show four replies from the wireless router or access point, as shown.



```
MS-DOS Prompt
Auto
C:\WINDOWS\Desktop>ping 192.168.0.50

Pinging 192.168.0.50 with 32 bytes of data:

Reply from 192.168.0.50: bytes=32 time<10ms TTL=30
Reply from 192.168.0.50: bytes=32 time<10ms TTL=30
Reply from 192.168.0.50: bytes=32 time<10ms TTL=30
Reply from 192.168.0.50: bytes=32 time<10ms TTL=30

Ping statistics for 192.168.0.50:
    Packets: Sent = 4, Received = 4, Lost = 0 (0% loss),
    Approximate round trip times in milli-seconds:
        Minimum = 0ms, Maximum = 0ms, Average = 0ms
C:\WINDOWS\Desktop>_
```

Networking Basics

Adding and Sharing Printers in Windows XP

After you have run the **Network Setup Wizard** on all the computers in your network (please see the **Network Setup Wizard** section at the beginning of **Networking Basics**.) you can use the **Add Printer Wizard** to add or share a printer on your network.

Whether you want to add a **local printer** (a printer connected directly to one computer,) share an **LPR printer** (a printer connected to a print server) or share a **network printer** (a printer connected to your network through a Gateway/Router,) use the **Add Printer Wizard**. Please follow the directions below:

First, make sure that you have run the Network Setup Wizard on all of the computers on your network.

On the following pages, we will show you these 3 ways to use the **Add Printer Wizard**:

- 1. Adding a local printer**
- 2. Sharing an network printer**
- 3. Sharing an LPR printer**

(Other Networking Tasks)

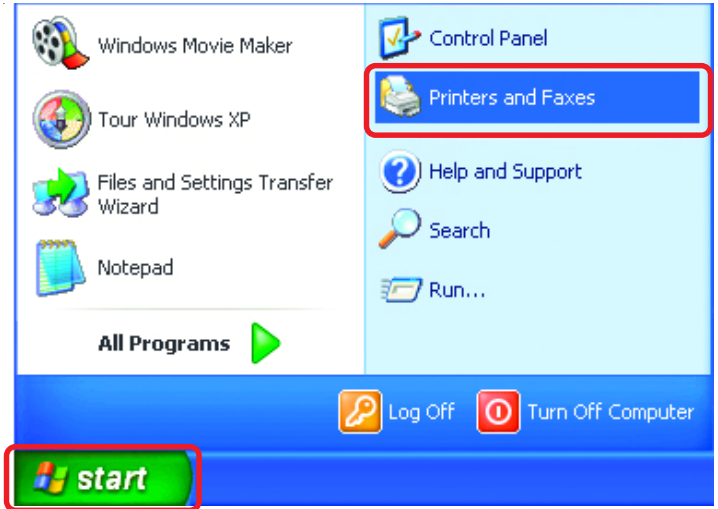
For help with other tasks, that we have not covered here, in home or small office networking, see **Using the Shared Documents** folder and **Sharing files and folders** in the **Help and Support Center** in Microsoft **Windows XP**.

Networking Basics

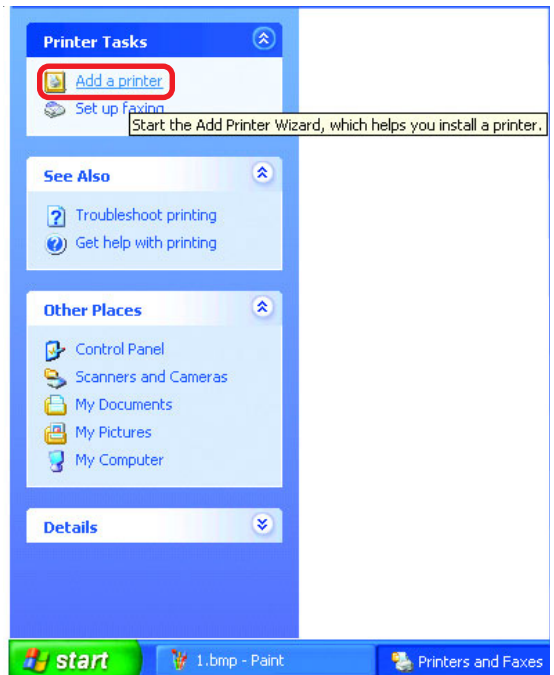
Adding a local printer (a printer connected directly to a computer)

A printer that is not shared on the network and is connected directly to one computer is called a **local printer**. If you do not need to share your printer on a network, follow these directions to add the printer to one computer.

- Go to **Start> Printers and Faxes**



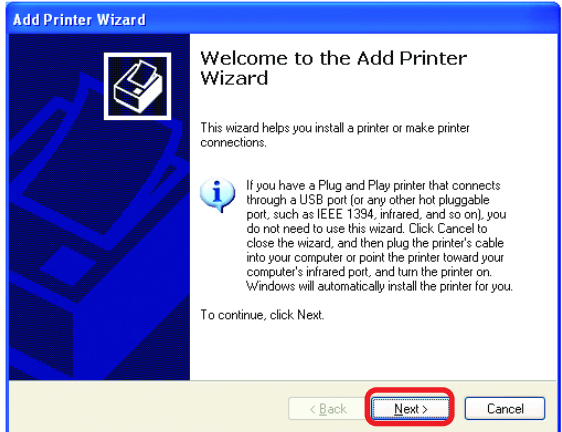
- Click on **Add a printer**



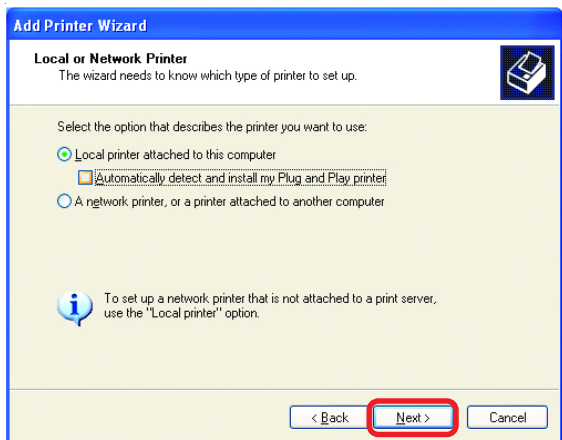
Networking Basics

Adding a local printer

- Click **Next**



- Select **Local printer attached to this computer**
- *(Deselect **Automatically detect and install my Plug and Play printer** if it has been selected.)*

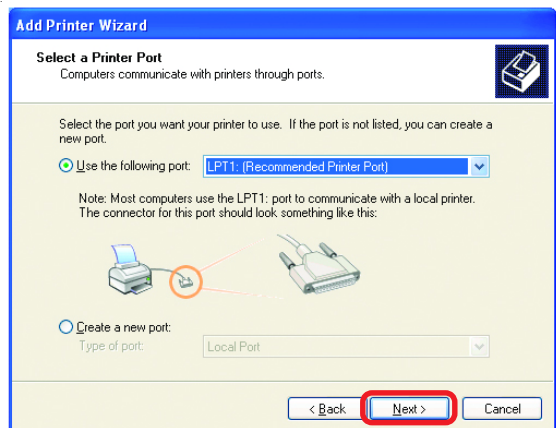


- Click **Next**

- Select **Use the following port:**
- From the pull-down menu **select the correct port** for your printer

*(Most computers use the **LPT1:** port, as shown in the illustration.)*

- Click **Next**



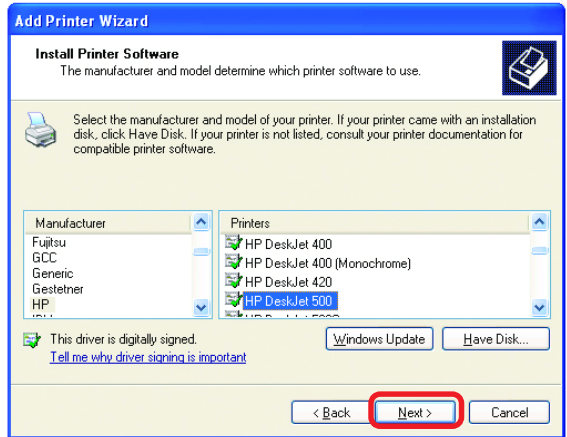
Networking Basics

Adding a local printer

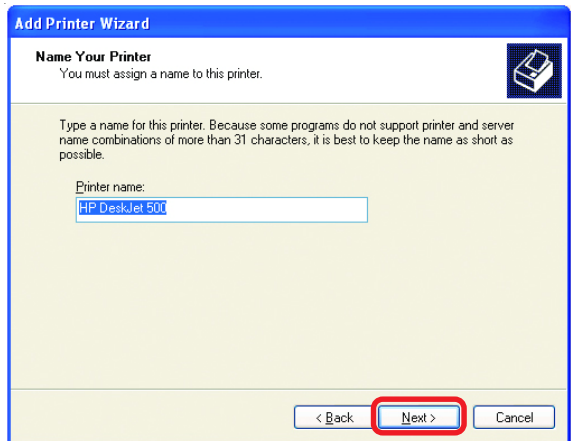
- Select and highlight the **correct driver** for your printer.

- Click **Next**

*(If the correct driver is not displayed, insert the CD or floppy disk that came with your printer and click **Have Disk.**)*

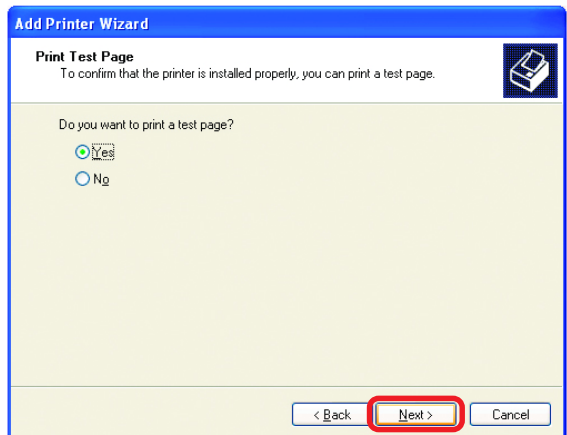


- At this screen, you can change the name of the printer (optional.)



- Click **Next**

- Select **Yes**, to print a test page. A successful printing will confirm that you have chosen the correct driver.

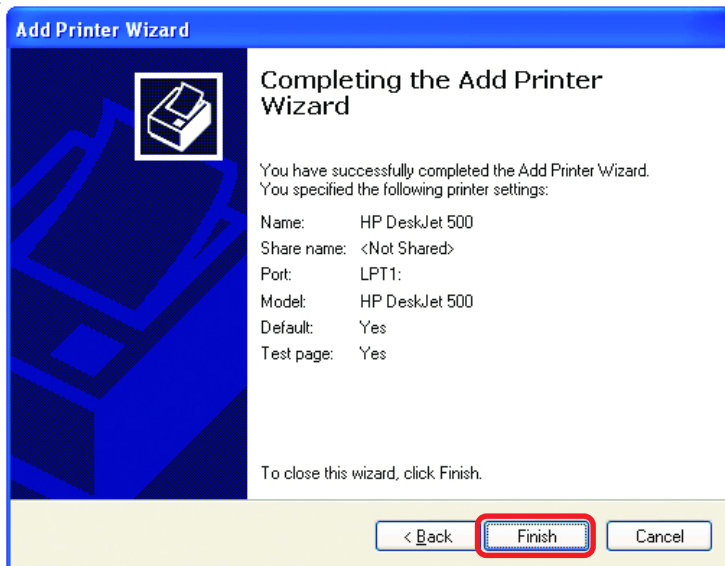


- Click **Next**

Networking Basics

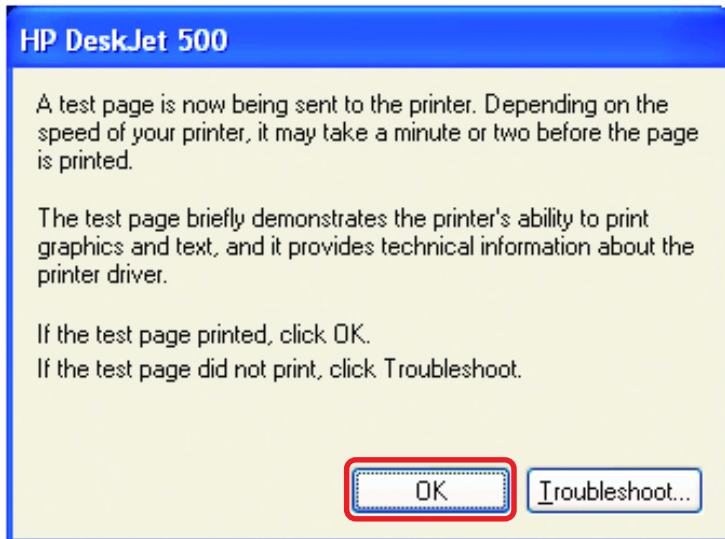
Adding a local printer

This screen gives you information about your printer.



Click **Finish**

When the test page has printed,



Click **OK**

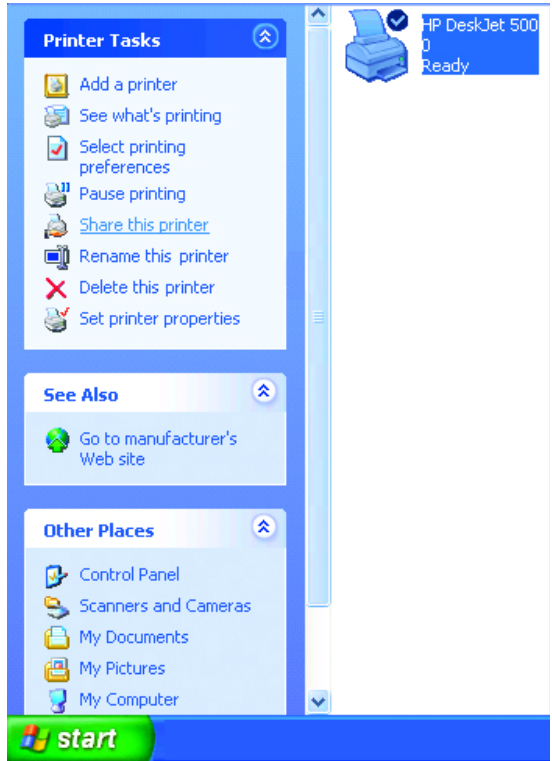
Networking Basics

Adding a local printer

- Go to **Start> Printers and Faxes**

A successful installation will display the printer icon as shown at right.

You have successfully added a local printer.



Sharing a network printer

After you have run the **Network Setup Wizard** on all the computers on your network, you can run the **Add Printer Wizard** on all the computers on your network. Please follow these directions to use the **Add Printer Wizard** to share a printer on your network:

- Go to **Start> Printers and Faxes**

