



DCS-2800LH and DCS-H100

User's Manual

Version 1.0

March 09th, 2018

Table of Contents

1. PRODUCT DESCRIPTION	3
2. APPEARANCE	3
3. APPLICATIONS	4
4. INSTALLATIONS	5

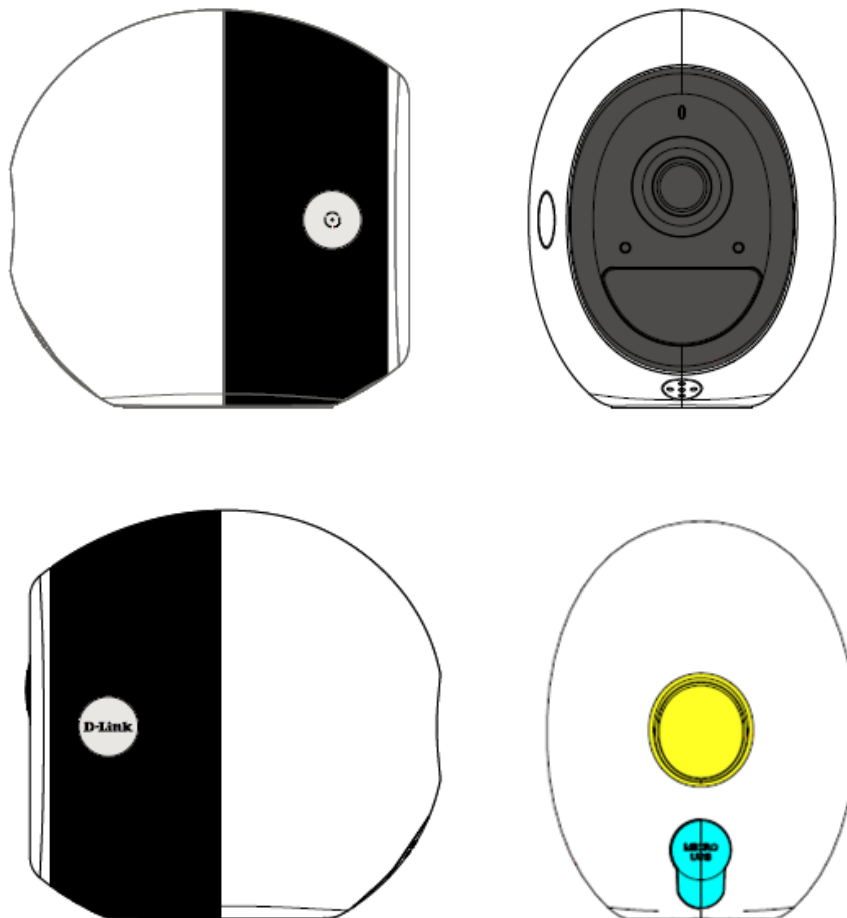
1. PRODUCT DESCRIPTION

DCS-2800LH is a battery powered network camera for consumer SOHO surveillance application. This camera adopts 2 mega-pixel progressive scan CMOS sensor; the video stream covers a larger scene and better quality than an analog CCTV camera. It is designed for indoor/outdoor Day/Night applications, thus, the camera itself built-in IR LED which can support 7.5m distance in dark environment.

DCS-H100 is a hub working with DCS-2800LH to provide a better performance in power consumption and video analysis. When motion detection is enabled by motion sensor (PIR), the camera starts recording to DCS-H100 (SD card, external HDD, or cloud) automatically as soon as they detect motion. When user wants to check the live view of camera, the camera starts streaming output to DCS-H100 (SD card, external HDD, or cloud) as soon as it is waked. Recorded video is stored in the DCS-H100 (SD card, external HDD, or cloud), so you can see all the activity of cameras detect at any time.

2. APPEARANCE

DCS-2800LH Camera



Front

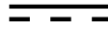
- LED: Status indicator
- PIR window

Side

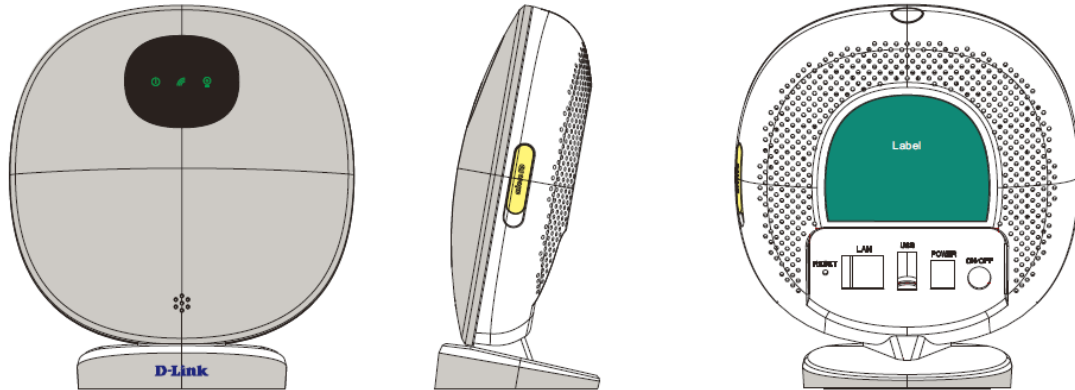
- Sync button

Rear

- Micro USB: Power jack, Vdc 5V/2A



DCS-H100



Front

- LED: Status indicator
- Siren

Top

- Sync button

Side

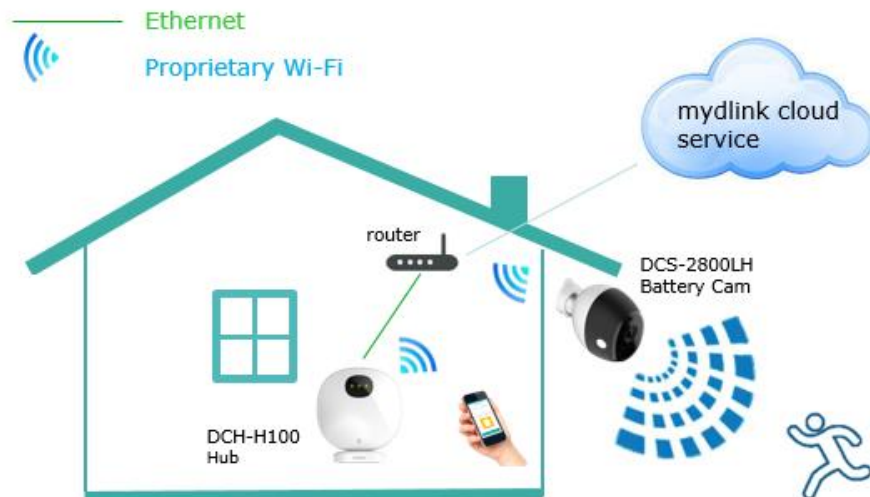
- Micro SD slot

Rear

- Reset button
- LAN
- USB
- Power on/off button
- Power jack, Vdc 12V/1.5A



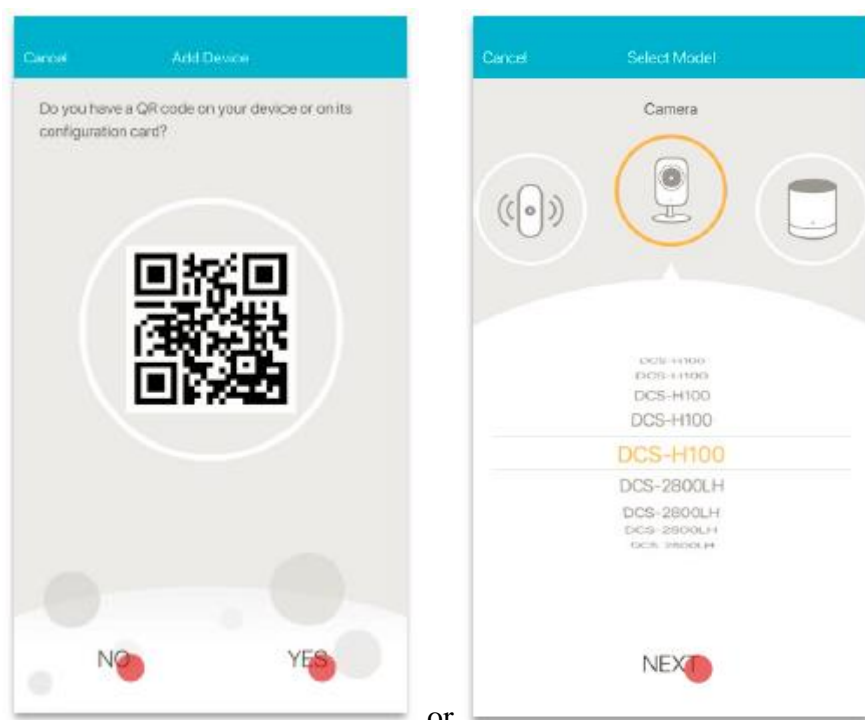
3. APPLICATIONS



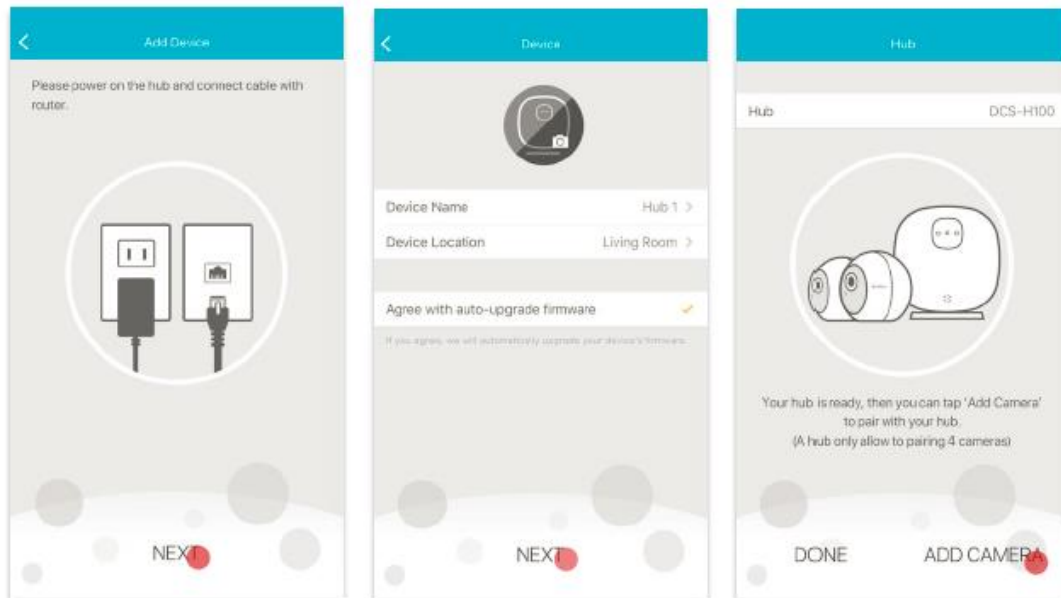
4. INSTALLATIONS

Step 1 Download mydlink App to your smart phone and register an account to login.

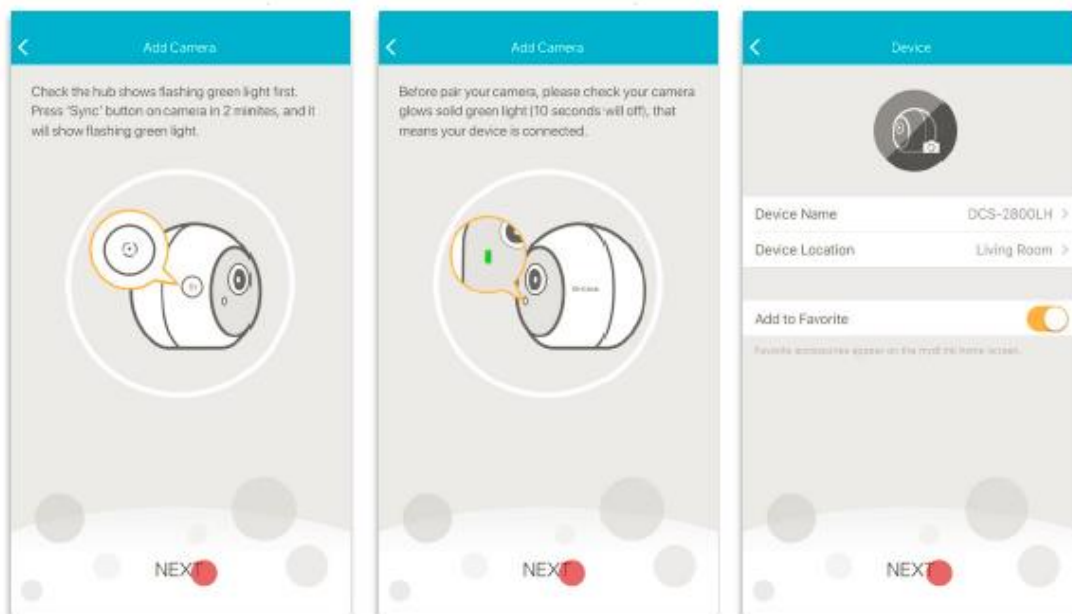
Step 2 Install DCS-H100: scan the QR code on device label of DCS-H100 or directly select model DCS-H100 on the menu of App.



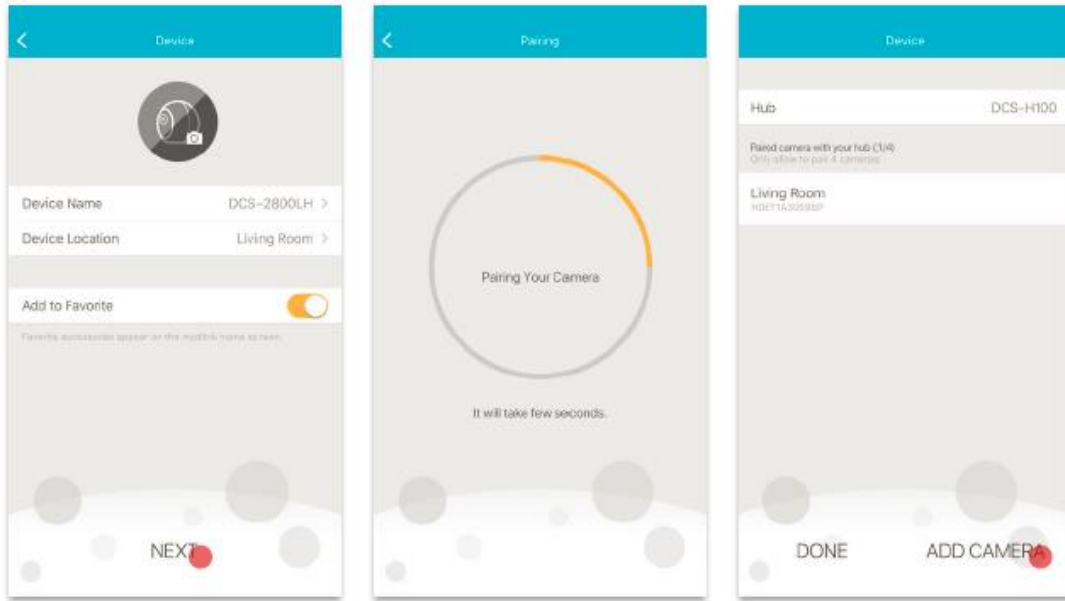
Step 3 Follow the instructions shown on the App to set up DCS-H100.



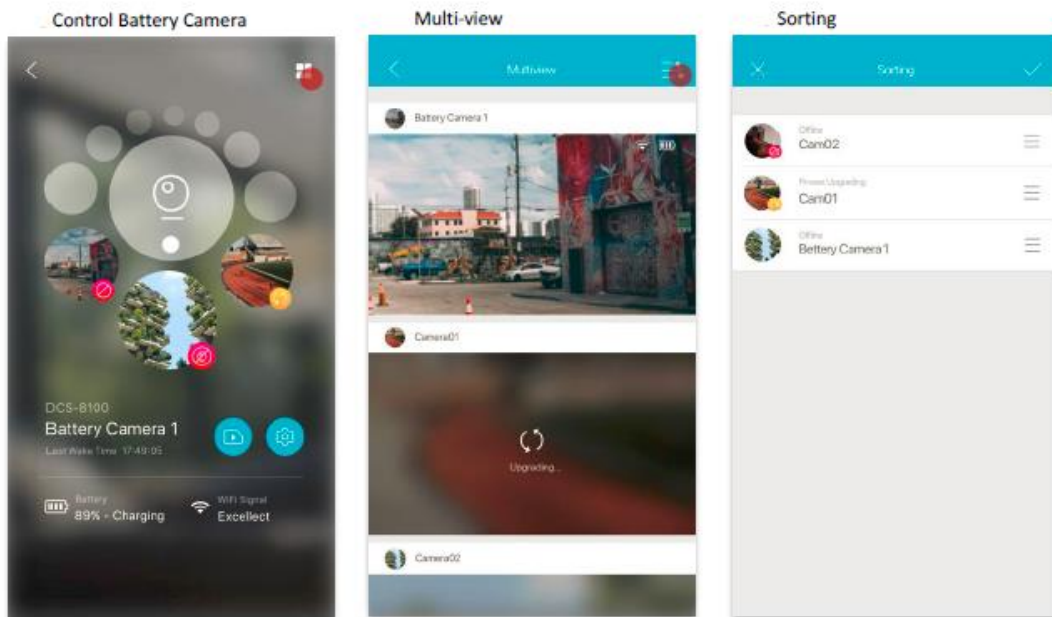
Step 4 Add Camera: Click the Sync button on the Hub first. Then, click the Sync button on the camera within 2 minutes. Once sync up successfully, the LED of camera will become solid green. (The solid green will keeps for 10 seconds, then off.)

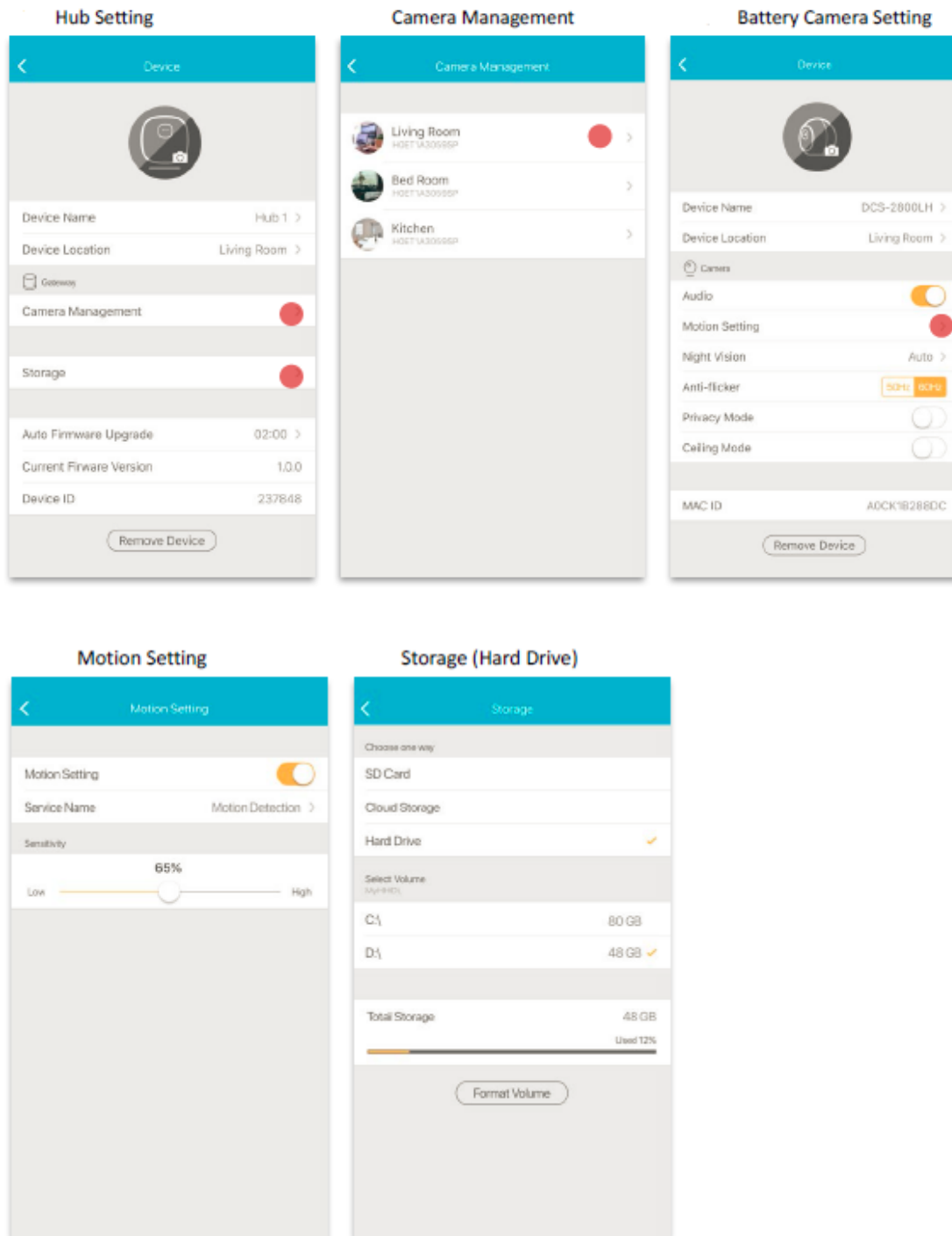


Step 5 Follow the instructions shown on the App to set up DCS-2800LH cameras (up to 4 cams can be added per hub.)



Step 6 Functionalities of Hub and Camera





Federal Communication Commission Interference Statement

This device complies with Part 15 of the FCC Rules. Operation is subject to the following two conditions: (1) This device may not cause harmful interference, and (2) this device must accept any interference received, including interference that may cause undesired operation.

This equipment has been tested and found to comply with the limits for a Class B digital device, pursuant to Part 15 of the FCC Rules. These limits are designed to provide reasonable protection against harmful interference in a residential installation. This equipment generates, uses and can radiate radio frequency energy and, if not installed and used in accordance with the instructions, may cause harmful interference to radio communications. However, there is no guarantee that interference will not occur in a particular installation. If this equipment does cause harmful interference to radio or television reception, which can be determined by turning the equipment off and on, the user is encouraged to try to correct the interference by one of the following measures:

- Reorient or relocate the receiving antenna.
- Increase the separation between the equipment and receiver.
- Connect the equipment into an outlet on a circuit different from that to which the receiver is connected.
- Consult the dealer or an experienced radio/TV technician for help.

FCC Caution:

- Any changes or modifications not expressly approved by the party responsible for compliance could void the user's authority to operate this equipment.
- This transmitter must not be co-located or operating in conjunction with any other antenna or transmitter.

Radiation Exposure Statement:

This equipment complies with FCC radiation exposure limits set forth for an uncontrolled environment. This equipment should be installed and operated with minimum distance 20cm between the radiator & your body.

Note: The country code selection is for non-US model only and is not available to all US model. Per FCC regulation, all WiFi product marketed in US must fixed to US operation channels only.

Industry Canada statement

- ❶ This device complies with Industry Canada license-exempt RSS standard(s). Operation is subject to the following two conditions:
 - 1) this device may not cause interference, and
 - 2) this device must accept any interference, including interference that may cause undesired operation of the device.
- ❶ Le présent appareil est conforme aux CNR d'Industrie Canada applicables aux appareils radio exempts de licence. L'exploitation est autorisée aux deux conditions suivantes:
 - 1) l'appareil ne doit pas produire de brouillage, et
 - 2) l'utilisateur de l'appareil doit accepter tout brouillage radioélectrique subi, même si le brouillage est susceptible d'en compromettre le fonctionnement.
- ❷ This Class B digital apparatus complies with Canadian ICES-003.
- ❷ Cet appareil numérique de la classe B est conforme à la norme NMB-003 du Canada.
- ❸ This device complies with RSS-310 of Industry Canada. Operation is subject to the condition that this device does not cause harmful interference.
- ❸ Cet appareil est conforme à la norme RSS-310 d'Industrie Canada. L'opération est soumise à la condition que cet appareil ne provoque aucune interférence nuisible.
- ❹ This device and its antenna(s) must not be co-located or operating in conjunction with any other antenna or transmitter, except tested built-in radios.
- ❹ Cet appareil et son antenne ne doivent pas être situés ou fonctionner en conjonction avec une autre antenne ou un autre émetteur, exception faites des radios intégrées qui ont été testées.
- ❺ The Country Code Selection feature is disabled for products marketed in the US/Canada.
- ❺ La fonction de sélection de l'indicatif du pays est désactivée pour les produits commercialisés aux États-Unis et au Canada.

Radiation Exposure Statement:

This equipment complies with IC radiation exposure limits set forth for an uncontrolled environment. This equipment should be installed and operated with minimum distance 20cm between the radiator & your body.

Déclaration d'exposition aux radiations:

Cet équipement est conforme aux limites d'exposition aux rayonnements IC établies pour un environnement non contrôlé. Cet équipement doit être installé et utilisé avec un minimum de 20 cm de distance entre la source de rayonnement et votre corps.