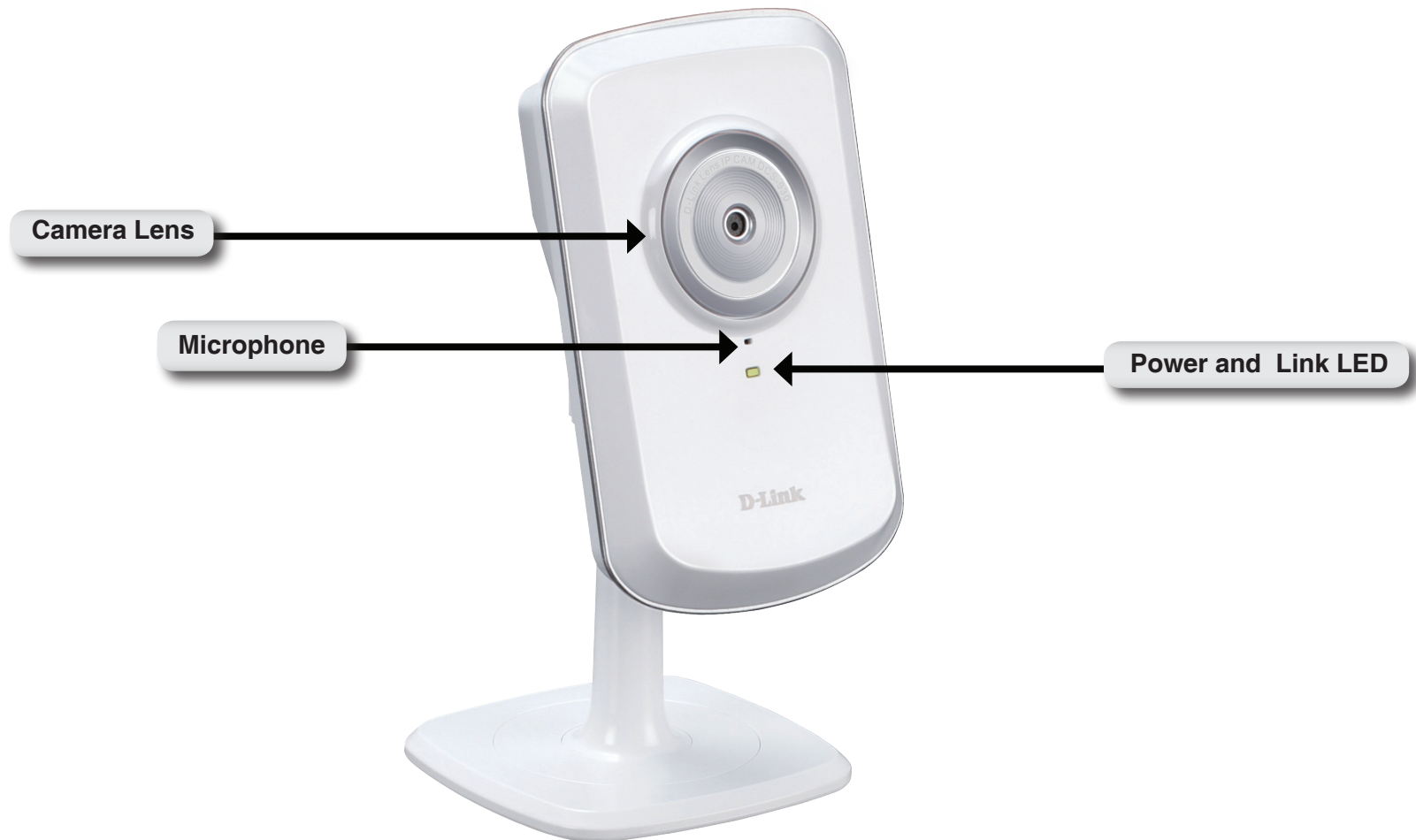
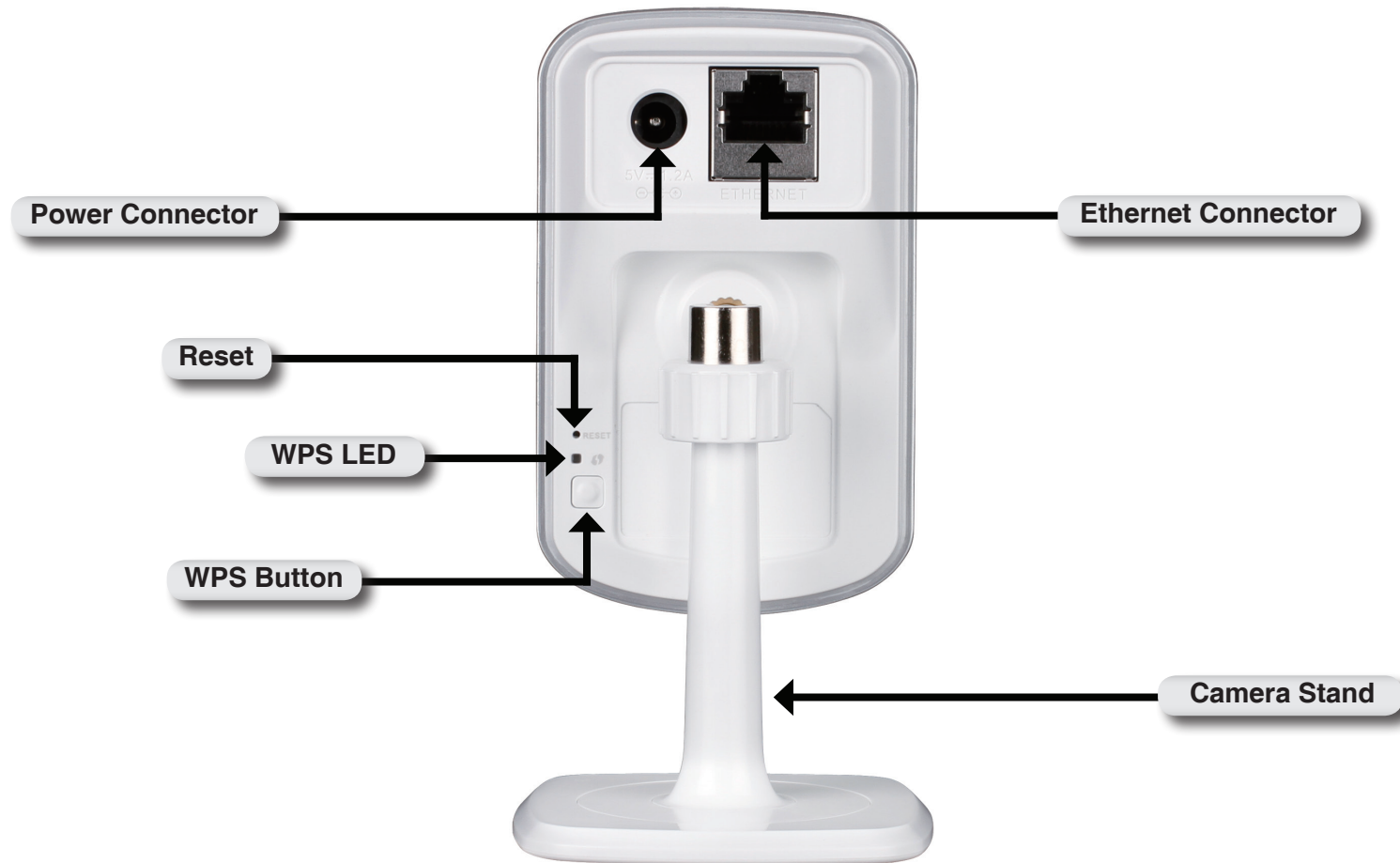


# Hardware Overview

## Front View



# Rear View

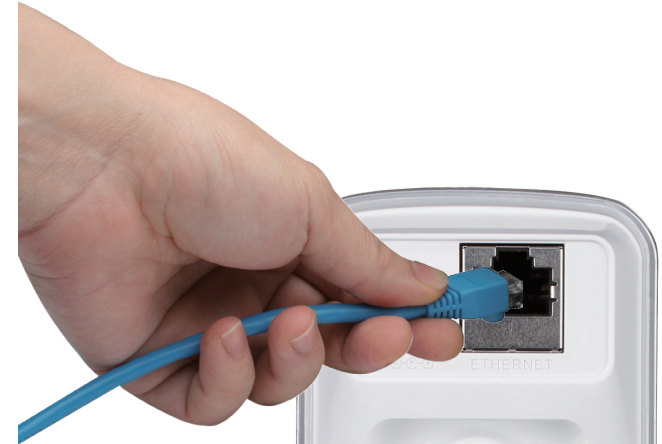


# Installation

## Hardware Installation

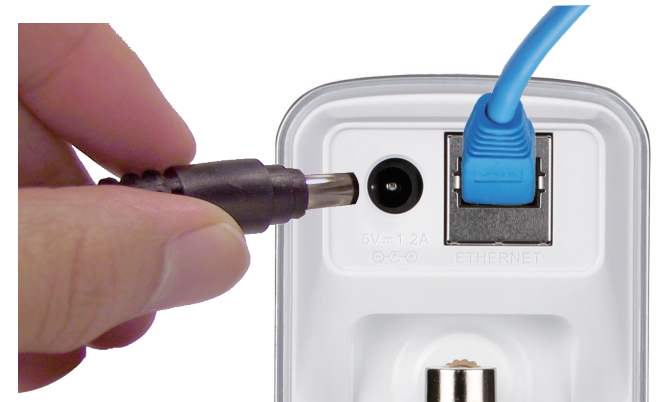
### Connect the Ethernet Cable

Connect the included Ethernet cable to the network cable connector located on the bottom panel of the **DCS-930\_A2** and attach it to the network.



### Attach the External Power Supply

Attach the external power supply to the DC power input connector located on the bottom panel of the **DCS-930\_A2** and connect it to your wall outlet or power strip. Power is confirmed when the green LED Power Indicator located below the lens on the **DCS-930\_A2** is illuminated.



# Wireless Installation Considerations

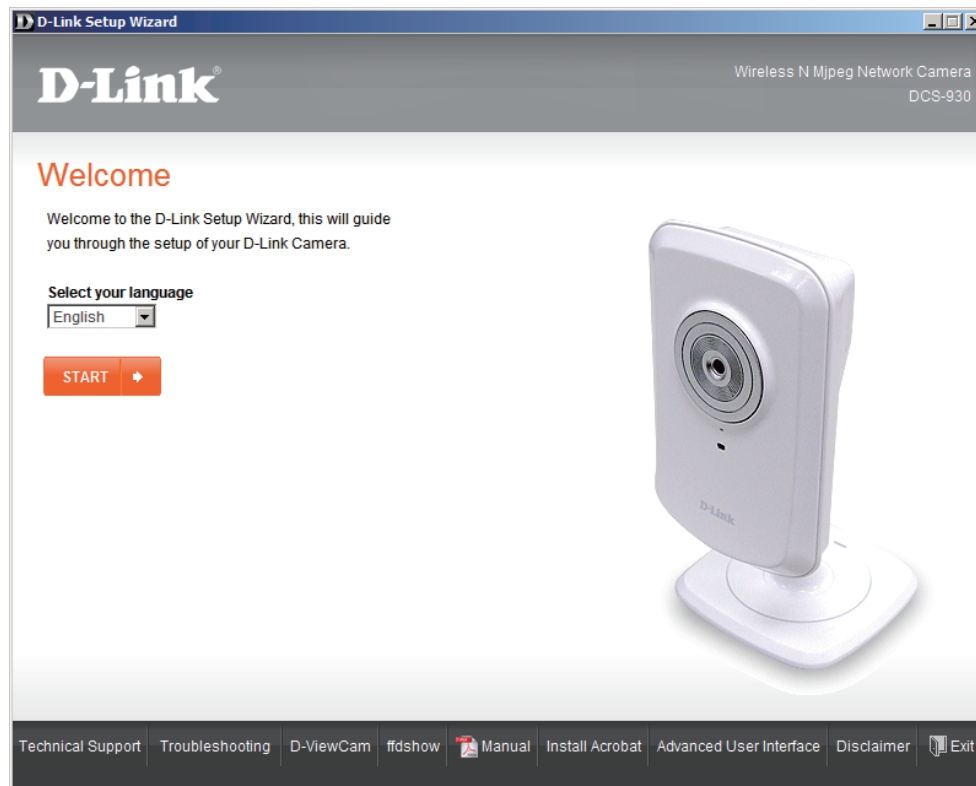
The D-Link Wireless Network Camera lets you access your network using a wireless connection from anywhere within the operating range of your wireless network. However, the number, thickness and location of walls, ceilings, or other objects that the wireless signals must pass through, may limit the range. Typical ranges vary depending on the types of materials and background RF (radio frequency) noise in your home or business. The key to maximizing wireless range is to follow these basic guidelines:

1. Minimize the number of walls and ceilings between your adapter and other network devices (such as your Network Camera) - each wall or ceiling can reduce your adapter's range from 3-90 feet (1-30 meters).
2. Be aware of the direct line between network devices. A wall that is 1.5 feet thick (.5 meters), at a 45-degree angle appears to be almost 3 feet (1 meter) thick. At a 2-degree angle, it looks over 42 feet (14 meters) thick. Position your devices so that the signal will travel straight through a wall or ceiling (instead of at an angle) for better reception.
3. Building Materials make a difference. A solid metal door or aluminum studs may weaken the wireless signal. Try to position your access points, wireless routers, and other networking devices where the signal passes through drywall or open doorways. Materials and objects such as glass, steel, metal, walls with insulation, water (fish tanks), mirrors, file cabinets, brick, and concrete will degrade your wireless signal.
4. Keep your product at least 3-6 feet or 1-2 meters away from electrical devices or appliances that generate RF noise.
5. If you are using 2.4GHz cordless phones or other radio frequency sources (such as microwave ovens), your wireless connection may degrade dramatically or drop completely. Make sure your 2.4GHz phone base is as far away from your wireless devices as possible. The base transmits a signal even if the phone is not in use.

# Starting the Camera Installation Wizard

Insert the Installation CD-ROM into your computer's optical drive to start the autorun program.

The CD-ROM will open the Camera Installation Wizard. Simply click **Start** to go through the Installation Wizard, which will guide you through the installation process from connecting your hardware to configuring your camera.



## WPS - Hardware Push Button Setup

Alternatively, you may create a WPS connect using the WPS Button on the back of the camera.

### To create a WPS connection:

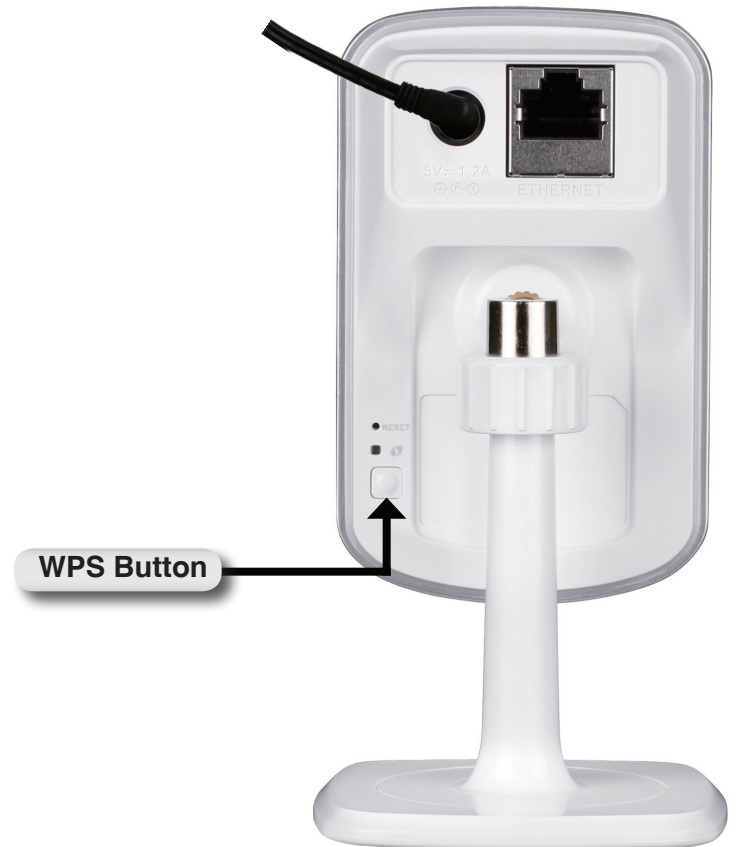
#### Step 1

Press and hold the WPS button on the side of the camera for three seconds. The blue WPS status LED above the button will blink.

#### Step 2

Press the WPS button on your router within 60 seconds. The WPS button is usually on the front or side of your router. On some routers, you may need to log in to the web interface and then click on an onscreen button to activate the WPS feature. If you are not sure where the WPS button is on your router, please refer to your router's User Manual.

The **DCS-930\_A2** will automatically create a wireless connection to your router. While connecting, the green LED will flash and your camera will reboot.

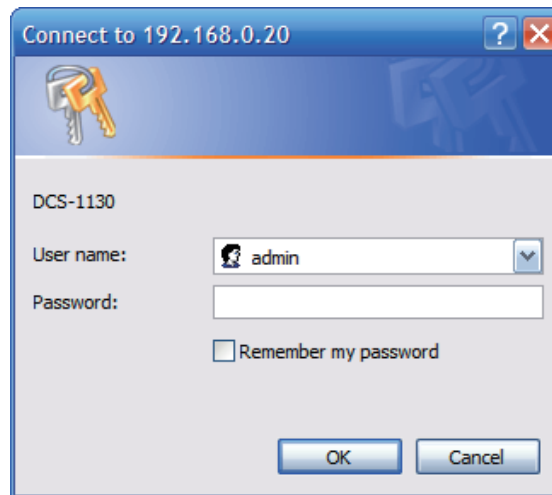


# Configuration

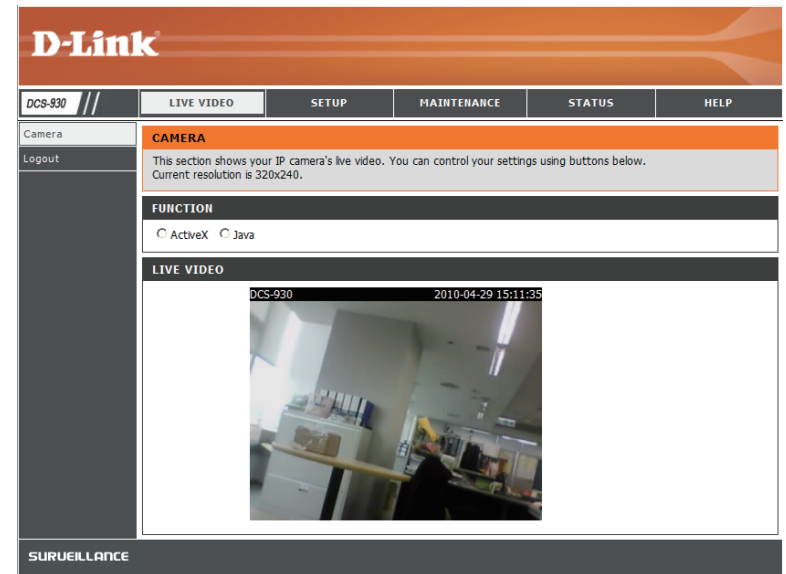
## Using the Configuration Menu

After completing the Camera Installation Wizard, you are ready to use your camera. The camera's built-in Web configuration utility is designed to allow you to easily access and configure your **DCS-930\_A2** at the end of the wizard, click **Go To Camera**, or enter the IP address of your camera into a web browser, such as Internet Explorer®. To log in, use the User name **admin** and the password you created in the Installation Wizard. If you did not create a password, the default password is blank. After entering your password, click **OK**.

**Note:** If you are directly connecting your PC to the camera, or if you are using the camera on a closed network, the default IP is **192.168.0.20**.



Click the **ActiveX** or **Java** radio button to view live video.



Please make sure that you have the latest version of Java application installed on your computer to ensure proper operation when viewing the video in Java mode. The Java application can be downloaded at no cost from Sun's web site. (<http://www.java.com>)

When you connect to the home page of your camera, you will be prompted to download ActiveX. If you want to use ActiveX to view your video images instead of Java, then you must download ActiveX.



# Live Video

**ActiveX:** For Windows® Users that do not have Java installed, please choose this option to view video streaming on the Home page.

**Java:** For Windows® users that have Java installed, you can also use this for viewing video. Mac users must choose this mode to view video.

## Setup > Wizard

You may choose to configure your network by using the **Internet Connection Setup Wizard** that includes step-by-step instructions. Otherwise, you may manually configure your connection using the **Manual Internet Connection Setup**.

