

D-Link® Full HD 廣角無線網路攝影機

FULL HD ULTRA-WIDE VIEW WI-FI CAMERA
DCS-2630L, DCS-2630LH

QUICK INSTALLATION GUIDE

КРАТКОЕ РУКОВОДСТВО ПО УСТАНОВКЕ

GUÍA DE INSTALACIÓN RÁPIDA

GUIA DE INSTALAÇÃO RÁPIDA

快速安裝指南

PETUNJUK PEMASANGAN CEPAT

CONTENTS OF PACKAGING



FULL HD ULTRA-WIDE VIEW WI-FI CAMERA
DCS-2630L



POWER ADAPTER



MOUNTING KIT



QUICK INSTALL CARD



If any of these items are missing from your packaging, contact your reseller.

SYSTEM REQUIREMENTS

- 802.11ac/n/g router (a D-Link Cloud Router is recommended)
- A broadband Internet connection
- iPhone, iPad, Android, or Windows smartphone or tablet (please refer to the mobile app's store page to check whether your device is compatible)

PRODUCT SETUP

SETTING UP YOUR CAMERA WITH MYDLINK LITE

Please follow the instructions below to set up your mydlink camera.

- Step 1:** On your mobile device, download mydlink Lite by searching for **mydlink Lite** in the iTunes App Store, Google Play, or the Windows Store.



- Step 2:** Launch the mydlink Lite app and create a new account or sign in to your existing account.

When you are asked to scan a QR code, use the code on the Quick Install Card in your package, or on the label attached to your device.

Congratulations, your DCS-2630L is now ready to use! Be sure to check the **mydlink.com** website periodically for the latest firmware updates to keep your product secure and up to date with the latest features.

Note: If you experience issues registering this camera with your mydlink account, or if you purchased an open box or resold unit, perform a hard reset by pressing and holding the reset button on the device for 10 seconds while the device is powered on. **If you are returning the device to the place of purchase, please perform the hard reset procedure to clear the device of any personal data.**

PRODUCT SETUP

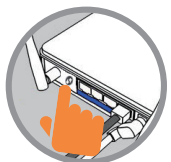
ZERO CONFIGURATION SETUP

If you have a **D-Link Cloud Router**, you can take advantage of Zero Configuration Setup. This feature configures your camera's settings for you and adds it to your mydlink account automatically.



Step 1:

Press the WPS button on the camera for 3 seconds. The WPS LED will start blinking.



Step 2:

Press the WPS button on your Cloud Router within 120 seconds. The DCS-2630L will automatically create a wireless connection to your router and automatically reboot.



Step 3:

From any computer, open a web browser, go to **<http://www.mydlink.com>** and log in to your account.

Click on the device name when the new device notification appears to add the camera to your account.

mydlink PORTAL

After registering your DCS-2630L camera with a mydlink account in the mydlink Lite mobile app, you will be able to remotely access your camera from the mydlink website.



Step 1:

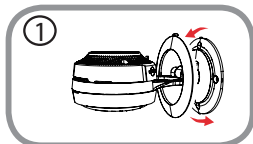
Open Internet Explorer and go to **www.mydlink.com**, then sign into mydlink.

Step 2:

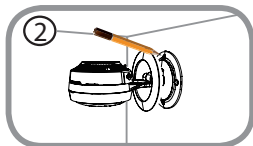
Select your camera from the device list, and your camera's Live View will appear.

MOUNTING THE CAMERA

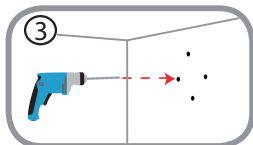
Please refer to the steps below to assist you with mounting the camera. It is recommended that you configure the camera before mounting.

**Step 1:**

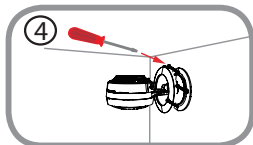
Rotate the camera base cover counterclockwise, then lift it to expose the mounting holes.

**Step 2:**

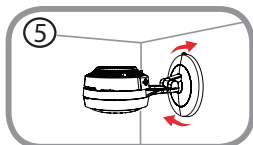
Place the camera base where you want to position the camera and use a pencil to mark the holes.

**Step 3:**

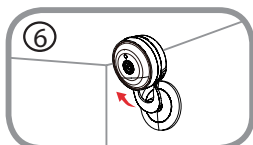
Depending on the material of the wall or ceiling, use proper tools to drill four holes 25mm deep with a 6mm drill bit where you marked. If the wall is made out of concrete, drill the holes first, then insert the plastic anchors to support the screws.

**Step 4:**

Place the camera base over the holes that are in the wall. Make sure to align the camera base holes with the holes in the wall. Use the supplied screws to attach the camera to the surface of the wall.

**Step 5:**

Reattach the base cover and turn it clockwise to lock it in place.

**Step 6:**

Adjust the angle of the camera as desired.

TROUBLESHOOTING

SETUP AND CONFIGURATION PROBLEMS

1. WHY IS THE CAMERA VIEW HAZY OR BRIGHT WHEN USING NIGHT VISION MODE?

The IR night vision lights on the camera may be reflecting off of a nearby surface or window. Try repositioning your camera to avoid reflections or glare.

2. WHAT CAN I DO IF I FORGET MY CAMERA PASSWORD?

If you forget your camera password, you will need to perform a hard reset of your camera. This process will change all your settings back to the factory defaults.

To reset your camera, please use an unfolded paperclip to press and hold the RESET button for at least 10 seconds while your camera is plugged in.

You can find software updates and user documentation on the D-Link website.

Tech Support for customers in

Australia:

Tel: 1300-766-868
24/7 Technical Support
Web: <http://www.dlink.com.au>
E-mail: support@dlink.com.au

India:

Tel: +91-832-2856000
Toll Free 1800-233-0000
Web: www.dlink.co.in
E-Mail: helpdesk@dlink.co.in

Singapore, Thailand, Indonesia, Malaysia, Philippines, Vietnam:

Singapore - www.dlink.com.sg
Thailand - www.dlink.co.th
Indonesia - www.dlink.co.id
Malaysia - www.dlink.com.my
Philippines - www.dlink.com.ph
Vietnam - www.dlink.com.vn

Korea:

Tel : +82-2-2028-1810
Monday to Friday 9:00am to 6:00pm
Web : <http://d-link.co.kr>
E-mail : g2b@d-link.co.kr

New Zealand:

Tel: 0800-900-900
24/7 Technical Support
Web: <http://www.dlink.co.nz>
E-mail: support@dlink.co.nz

South Africa and Sub Sahara Region:

Tel: +27 12 661 2025
08600 DLINK (for South Africa only)
Monday to Friday 8:30am to 9:00pm South Africa Time
Web: <http://www.d-link.co.za>
E-mail: support@d-link.co.za

D-Link Middle East - Dubai, U.A.E.

Plot No. S31102,
Jebel Ali Free Zone South,
P.O.Box 18224, Dubai, U.A.E.
Tel: +971-4-8809022
Fax: +971-4-8809066 / 8809069
Technical Support: +971-4-8809033
General Inquiries: info.me@dlinkmea.com
Tech Support: support.me@dlinkmea.com

Egypt

1, Makram Ebeid Street -
City Light Building - floor 5
Nasrity - Cairo, Egypt
Tel.: +2 02 23521593 - +2 02 23520852
Technical Support: +2 02 26738470
General Inquiries: info.eg@dlinkmea.com
Tech Support: support.eg@dlinkmea.com

Kingdom of Saudi Arabia

Office # 84 ,
Al Khaleej Building (Mujamathu Al-Khaleej)
Opp. King Fahd Road, Olaya
Riyadh - Saudi Arabia
Tel: +966 1121 70008
Technical Support:
+966 1121 70009
General Inquiries: info.sa@dlinkmea.com
Tech Support: support.sa@dlinkmea.com

Pakistan

Islamabad Office:
61-A, Jinnah Avenue, Blue Area,
Suite # 11, EBC, Saudi Pak Tower,
Islamabad - Pakistan
Tel.: +92-51-2800397, 2800398
Fax: +92-51-2800399

Karachi Office:

D-147/1, KDA Scheme # 1,
Opposite Mudassar Park, Karsaz Road,
Karachi – Pakistan
Phone: +92-21-34548158, 34326649
Fax: +92-21-4375727
Technical Support: +92-21-34548310,
34305069
General Inquiries: info.pk@dlinkmea.com
Tech Support: support.pk@dlinkmea.com

TECHNICAL SUPPORT

Iran

Unit 5, 5th Floor, No. 20, 17th Alley , Bokharest
St. , Argentine Sq. ,
Tehran IRAN
Postal Code : 1513833817
Tel: +98-21-88880918,19
+98-21-88706653,54
General Inquiries: info.ir@dlinkmea.com
Tech Support: support.ir@dlinkmea.com

ישראל

מטלון סנטר
רח' המגשימים 20
קרית מטלון, פ"ת 49348, ת"ד 7060
טל: 03-9215173
טל: 073-7962797
דוא"ל כללי: info@dlink.co.il
דוא"ל תמיכה: support@dlink.co.il

Morocco

M.I.T.C
Route de Nouaceur angle RS et CT 1029
Bureau N° 312 ET 337
Casablanca , Maroc
Phone : +212 663 72 73 24
Email: support.na@dlinkmea.com

Lebanon RMA center

Dbayeh/Lebanon
PO Box:901589
Tel: +961 4 54 49 71 Ext:14
Fax: +961 4 54 49 71 Ext:12
Email: taoun@dlinkmea.com

Bahrain

Technical Support: +973 1 3332904

Kuwait:

Technical Support: + 965 22453939 / +965
22453949

Türkiye

Büyükdere Cad. Ferro Plaza No:155
D: 1 K: 1 Zincirlikuyu / Istanbul
Tel: +90 (212) 289-56-59
Email: info.tr@dlink.com.tr

Federal Communication Commission Interference Statement

This device complies with Part 15 of the FCC Rules. Operation is subject to the following two conditions:

- (1) This device may not cause harmful interference, and
- (2) this device must accept any interference received, including interference that may cause undesired operation.

This equipment has been tested and found to comply with the limits for a Class B digital device, pursuant to Part 15 of the FCC Rules. These limits are designed to provide reasonable protection against harmful interference in a residential installation. This equipment generates, uses and can radiate radio frequency energy and, if not installed and used in accordance with the instructions, may cause harmful interference to radio communications. However, there is no guarantee that interference will not occur in a particular installation. If this equipment does cause harmful interference to radio or television reception, which can be determined by turning the equipment off and on, the user is encouraged to try to correct the interference by one of the following measures:

- Reorient or relocate the receiving antenna.
- Increase the separation between the equipment and receiver.
- Connect the equipment into an outlet on a circuit different from that to which the receiver is connected.
- Consult the dealer or an experienced radio/TV technician for help.

FCC Caution: Any changes or modifications not expressly approved by the party responsible for compliance could void the user's authority to operate this equipment.

This transmitter must not be co-located or operating in conjunction with any other antenna or transmitter.

For operation within 5.15 ~ 5.25GHz frequency range, it is restricted to indoor environment.

This device meets all the other requirements specified in Part 15E, Section 15.407 of the FCC Rules.

Radiation Exposure Statement:

This equipment complies with FCC radiation exposure limits set forth for an uncontrolled environment.

This equipment should be installed and operated with minimum distance 20 cm between the radiator & your body.

Note: The country code selection is for non-US model only and is not available to all US model.

Per FCC regulation, all WiFi product marketed in US must fixed to US operation channels only.

低功率電波輻射性電機管理辦法

第十二條 經型式認證合格之低功率射頻電機，非經許可，公司、商號或使用者均不得擅自變更頻率、加大功率或變更原設計之特性及功能。

第十四條 低功率射頻電機之使用不得影響飛航安全及干擾合法通信；經發現有干擾現象時，應立即停用，並改善至無干擾時方得繼續使用。前項合法通信，指依電信法規定作業之無線電通信。低功率射頻電機須忍受合法通信或工業、科學及醫療用電波輻射性電機設備之干擾。

在 5.25-5.35 赫茲頻帶內操作之無線資訊傳輸設備，限於室內使用。

「電磁波曝露量 MPE 標準值 $1\text{mW}/\text{cm}^2$ ，本產品使用時建議應距離人體 20 cm」

送測產品實測值為： $0.0277\text{mW}/\text{cm}^2$