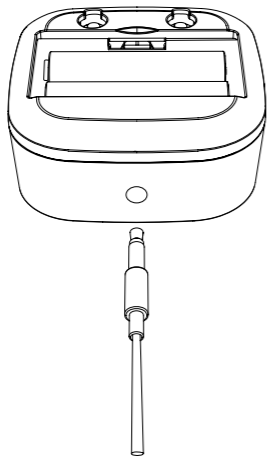
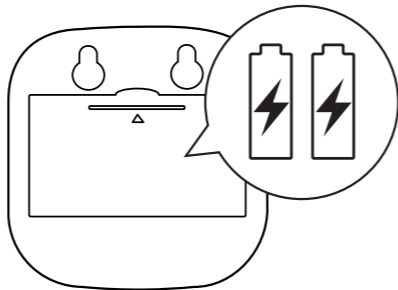


1



Connect the sensor cable to the bottom of the water sensor.

2



Remove the battery cover by gently pressing down on the tab. Insert the two AA batteries and reattach battery cover.

3

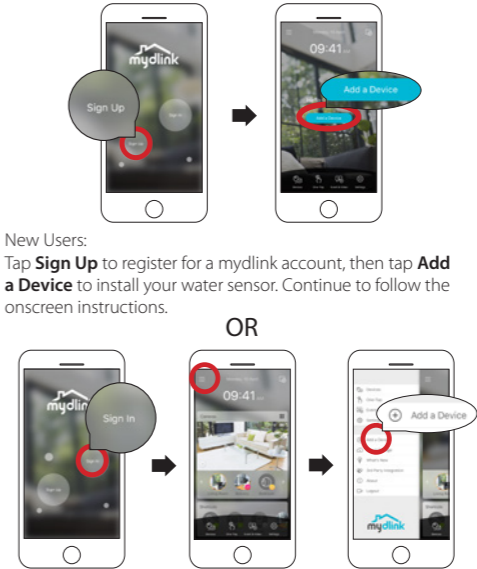


Scan the QR code above to download the **mydlink** app for your Android or iOS device.

**Note: This product is NOT COMPATIBLE with mydlink Lite.**

If you are a mydlink Lite user, sign in to the new app with the same username and password and your existing cameras will appear in the new app.

4

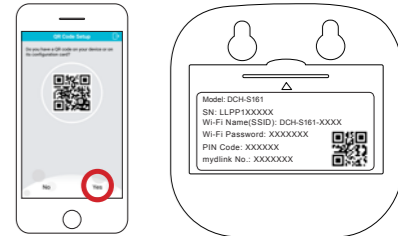


**New Users:**  
Tap **Sign Up** to register for a mydlink account, then tap **Add a Device** to install your water sensor. Continue to follow the onscreen instructions.

OR

**Existing Users:**  
Sign in using your mydlink account and tap the icon at the top left, then tap **Add a Device** to start the setup wizard. Continue to follow the onscreen instructions.

5



Tap **Yes** to scan the setup code on the back of the DCH-S161. Continue to follow the onscreen instructions to complete the setup process.

**Note:** Please ensure that your mobile device is connected to the same Wi-Fi network of the router that you plan on connecting the DCH-S161 to.



## Device Information

DCH-S161

Action Button / LED      Reset Button



- The device is booting up or has been reset successfully.
- Ready for setup or the device lost its Wi-Fi connection.
- The device is connecting to a Wi-Fi network.
- The device successfully connected to a Wi-Fi network. The LED will turn off shortly after.



## Frequently Asked Questions

### 1) What can I do if my water sensor is not working properly or I'm having problems setting it up?

Reset the water sensor by pressing the Reset button using a paperclip and try setting the water sensor up again.

In addition, please verify that:

- your Internet connection is working.
- your router's wireless is turned on.
- the AA batteries are inserted correctly and have power.
- your water sensor is on the same network as your mobile device (for initial setup).

### 2) How do I turn off the siren?

Press the Action Button once to turn off the siren. When next time the water sensor detects flooding, the siren will sound again.



## Minimum Requirements

To install this product, you will need:

- A 802.11n/g router (a router with a WPS button is recommended)
- An Internet connection
- An e-mail account (required to register for mydlink service)
- The mydlink™ app is available for iPhone®, iPad® and Android™ devices. Please refer to the mobile app's store page to check whether your device is compatible.



## Support

For troubleshooting tips and more information, visit: [support.dlink.com](http://support.dlink.com)

For technical support, call:  
**1-877-453-5465 (USA) 1-800-361-5265 (CAN)**

Version 1.00 (US)\_70x110  
August 22, 2018

Copyright ©2018 All rights reserved. D-Link and the D-Link logo are registered trademarks of D-Link Corporation or its subsidiaries. Product specifications, size and shape are subject to change without notice, and actual product appearance may differ from that depicted on the packaging. Visit [dlink.com](http://dlink.com) for more details.



### FCC Statement

This equipment has been tested and found to comply with the limits for a Class B digital device, pursuant to part 15 of the FCC Rules. These limits are designed to provide reasonable protection against harmful interference in a residential installation. This equipment generates, uses and can radiate radio frequency energy and, if not installed and used in accordance with the instructions, may cause harmful interference to radio communications. However, there is no guarantee that interference will not occur in a particular installation. If this equipment does cause harmful interference to radio or television reception, which can be determined by turning the equipment off and on, the user is encouraged to try to correct the interference by one or more of the following measures:  
—Reorient or relocate the receiving antenna.  
—Increase the separation between the equipment and receiver.  
—Connect the equipment into an outlet on a circuit different from that to which the receiver is connected.  
—Consult the dealer or an experienced radio/TV technician for help.

### FCC Radiation Exposure Statement

This device complies with FCC radiation exposure limits set forth for an uncontrolled environment and it also complies with Part 15 of the FCC RF Rules. This equipment must be installed and operated in accordance with provided instructions and the antenna(s) used for this transmitter must be installed to provide a separation distance of at least 20 cm from all persons and must not be co-located or operating in conjunction with any other antenna or transmitter. End-users and installers must be provided with antenna installation instructions and consider removing the no-collocation statement.

This device complies with Part 15 of the FCC Rules. Operation is subject to the following two conditions:  
(1) this device may not cause harmful interference, and  
(2) this device must accept any interference received, including interference that may cause undesired operation.

### Caution!

Any changes or modifications not expressly approved by the party responsible for compliance could void the user's authority to operate the equipment.

### Canada Statement

This device complies with Industry Canada's licence-exempt RSSs. Operation is subject to the following two conditions:  
(1) This device may not cause interference; and  
(2) This device must accept any interference, including interference that may cause undesired operation of the device.

Le présent appareil est conforme aux CNR d'Industrie Canada applicables aux appareils radio exempts de licence. L'exploitation est autorisée aux deux conditions suivantes :

- (1) l'appareil ne doit pas produire de brouillage;
- (2) l'utilisateur de l'appareil doit accepter tout brouillage radioélectrique subi, même si le brouillage est susceptible d'en compromettre le fonctionnement.

The device meets the exemption from the routine evaluation limits in section 2.5 of RSS 102 and compliance with RSS-102 RF exposure, users can obtain Canadian information on RF exposure and compliance.

Le dispositif rencontre l'exemption des limites courantes d'évaluation dans la section 2.5 de RSS 102 et la conformité à l'exposition de RSS-102 rf, utilisateurs peut obtenir l'information canadienne sur l'exposition et la conformité de rf.

This transmitter must not be co-located or operating in conjunction with any other antenna or transmitter. This equipment should be installed and operated with a minimum distance of 20 centimeters between the radiator and your body.

Cet émetteur ne doit pas être Co-placé ou ne fonctionnant en même temps qu'aucune autre antenne ou émetteur. Cet équipement devrait être installé et actionné avec une distance minimum de 20 centimètres entre le radiateur et votre corps.

### Battery replacement warning

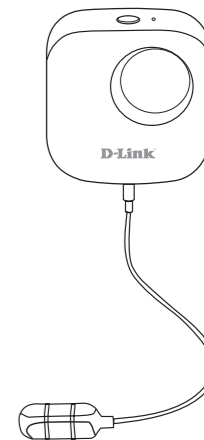
Risk of explosion if the battery is replaced by an incorrect type. This product contain build in battery that need to be removed by a specialist before the product disposal mandatory

Keep the battery away from excessive heat and direct sunlight. Do not place it on heating device such as microwave Owen stoves or radiators  
Battery may explode if overheated. Recommended if possible

- (1)Risk of explosion if battery is replaced by an incorrect type.
- (2)Dispose of used batteries according to the instructions.

# Wi-Fi Water Sensor

## Quick Start Guide



FCC: DCH-S161  
IC:DCH-S161A1

