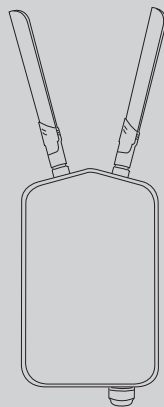


## Quick Installation Guide

Nuclias Cloud-Managed AC1300 Wave 2 Outdoor  
Access Point

DBA-3621P



---

# Contents

---

English

1

## Before You Begin

This installation guide provides instructions for installing the DBA-3621P on your network. Additional documentation is also available on the D-Link support website.

- **Nuclias Cloud Manual:** For additional information and instructions on how to configure the device using Nuclias Cloud.

## Package Contents

This DBA-3621P package includes the following items:

- DBA-3621P Access Point
- Mounting Plate and Hardware (U-bolts and nut fasteners, screws and washers)
- Grounding Wire
- Console Cable
- Quick Start Guide

If any of the above items are damaged or missing, please contact your local D-Link reseller.

**Note:** To power the unit, use an 802.3af or 802.3at PoE Switch or PoE Injector. This product is intended to be supplied by a LPS (Limited Power Source) marked UL Listed Power Unit, and its output is rated at 48 V DC (PoE), 0.6 A min., and has a TMA of 60 °C.

## System Requirements

- Computers with Windows®, Macintosh®, or Linux-based operating systems with an installed Ethernet Adapter.
- Internet Explorer 11, Safari 7, Firefox 28, or Google Chrome 33 and above (for configuration).

## Hardware Overview

### LED Indicators

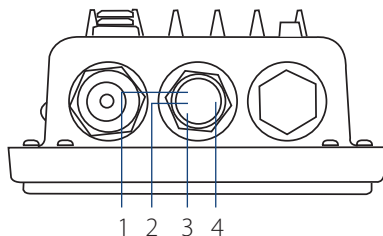


Figure 1: LED Indicators

**Note:** For the LED positions, please unscrew the protective cap to line up the device with the diagram above.

#	LED	Description
1	LAN (PoE)	<b>Green (Solid)</b> - Link preset <b>Green (Flashing)</b> - Sending or receiving packets
2	2.4 GHz	<b>Green (Solid)</b> - Device's 2.4 GHz band is operating successfully <b>Green (Flashing)</b> - Sending or receiving packets
3	5 GHz	<b>Green (Solid)</b> - Device's 5 GHz band is operating successfully <b>Green (Flashing)</b> - Sending or receiving packets
4	Power/Cloud	<b>Green (Solid)</b> - Device operational and linked to Nuclias Cloud <b>Green (Flashing)</b> - Device is trying to connect to Nuclias Cloud <b>Orange (Solid)</b> - Device booting up <b>Orange (Flashing)</b> - Device undergoing reset procedure <b>Red (Solid)</b> - Device malfunction

Table 1: LED Description

## Interface Connectors

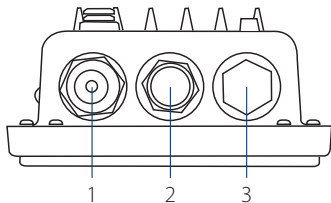


Figure 2: Bottom Connectors

#	Connector	Description
1	LAN(PoE) Port	Gigabit RJ-45 port for data and Power over Ethernet (PoE).
2	Reset	Press and hold for 10 seconds to factory reset the device.
3	Console Port	Console port to connect to the DBA-3621P using a RJ-45 to serial cable.

Table 2: Interface Description

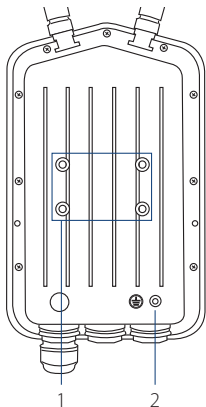


Figure 3: Rear Connectors

#	Connector	Description
1	Wall/Pole Mount	Mount to connect to the mounting plate on a wall or a pole.
2	Grounding Wire	Connector for the grounding wire.

Table 3: Interface Description

## Installation

### Using Power over Ethernet (PoE)

1. Use a standard Ethernet cable to connect the LAN1(PoE) port on the DBA-3621P to a PoE power source device such as an 802.3af or 802.3at PoE switch or PoE injector.

## Configuration

### Using Nuclias Cloud

The DBA-3621P is designed to be managed through the Nuclias Cloud. Refer to the **Nuclias Cloud Manual** for detailed configuration instructions. To use Nuclias Cloud, your device must be connected to the Internet.

**Note:** D-Link recommends manually configuring the device before mounting it.

### Nuclias Cloud App Configuration

1. Download the free Nuclias Cloud app from the App Store or Google Play by searching for **Nuclias Cloud**.
2. Open the Nuclias Cloud app and follow the onscreen instructions to discover and set up your device.

### Nuclias Cloud Web Configuration

1. On an Internet-connected computer, open a web browser and go to **www.nuclias.com**.
2. Enter your D-Link Nuclias username and password, then click **Login**.
3. Click on **Settings > Add device**.
4. Follow the onscreen instructions to set up your device.

## Manual Configuration

**Note:** The management computer, DHCP server and DBA-3621P must be in the same subnet.

If you are unable to connect to Nuclias Cloud, you may need to manually configure the DBA-3621P using its web user interface. Use one of the following methods to access the web user interface:

### Connecting through Ethernet

1. Use an Ethernet cable to connect the DBA-3621P to the management computer, or to the switch or router the management computer is connected to.
2. Open a web browser and type in the default host name of the DBA-3621P in the address bar and press **Enter**. The default host name is **DBA-3621P-XXXX** where **XXXX** represents the last 4 characters of the MAC address listed on the device label located on the bottom of the device.
3. Log in to the administration user interface. The default login information is

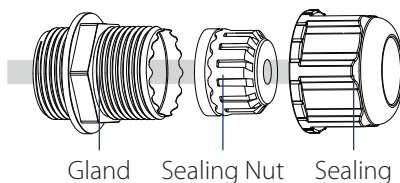
Username: **admin**  
Password: **admin**

### Connecting Wirelessly

1. Connect the management computer to the default SSID of the DBA-3621P. The SSID will be in the format **DBA-3621P-XXXX** where **XXXX** represents the last 4 characters of the MAC address listed on the device label located on the bottom of the device.
2. Open a web browser and type in the default host name of the DBA-3621P in the address bar and press **Enter**. The default host name is **DBA-3621P-XXXX** where **XXXX** represents the last 4 characters of the MAC address listed on the device label located on the bottom of the device.
3. Log in to the administration user interface. The default login information is

Username: **admin**  
Password: **admin**

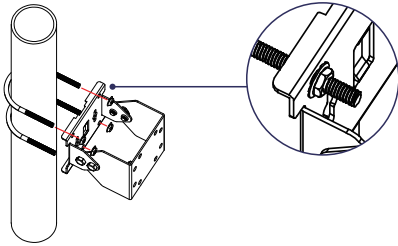
## Mounting



**Figure 4: LAN Port Waterproof Enclosure**

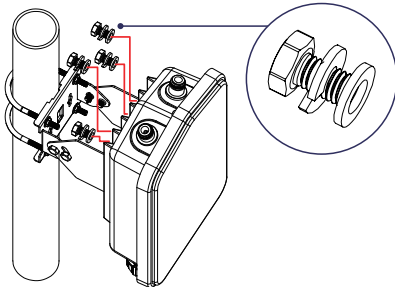
1. Connect an Ethernet Cable to the LAN(PoE) port on the DBA-3621P. Use the LAN Port waterproof enclosures to seal the ports.

## Pole Mounting



**Figure 5: Attaching the Mounting Base**

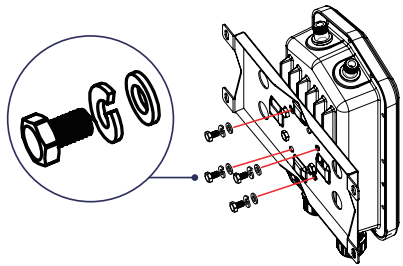
1. Secure the mount base to the pole using the U-bolt and the four included nut fasteners.



**Figure 6: Mounting the Device**

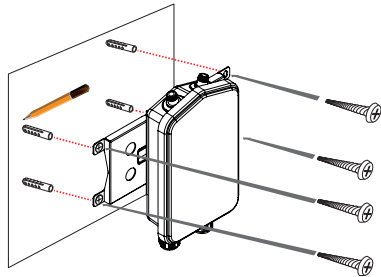
2. Align and attach the DBA-3621P to the mounting base using the four included screws and washers.

## Wall Mounting



**Figure 7: Attaching the Mounting Plate**

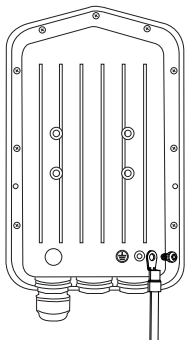
1. Align and attach the DBA-3621P to the mounting plate using the four included screws and washers.



**Figure 8: Mounting the Device**

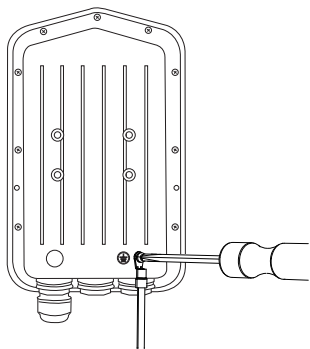
2. Use the mounting plate to mark the location where to drill the holes in the wall.
3. Drill holes on the markings and place the included anchors into the drilled holes.
4. Align and place the mounting plate on top of the anchors and use the included screws to secure the DBA-3621P to the wall.

## Connecting the Grounding Wire



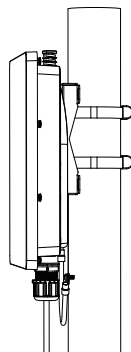
**Figure 9: Attaching the Grounding Wire**

1. A grounding wire is recommended to protect your device from lightning strikes and the buildup of static electricity. Attach the grounding wire to the DBA-3621P using the included screw.



**Figure 10: Attaching the Grounding Wire**

2. Tighten the grounding wire to the DBA-3621P until it is securely attached.



**Figure 11: Attaching the Grounding Wire**

3. Attach the other end of the grounding wire to either the wall or the pole mount. Ensure that the wall or the pole mount is connected to an electrical ground.

# Appendix - Statements

## **Federal Communication Commission Interference Statement**

This equipment has been tested and found to comply with the limits for a Class B digital device, pursuant to Part 15 of the FCC Rules. These limits are designed to provide reasonable protection against harmful interference in a residential installation. This equipment generates, uses and can radiate radio frequency energy and, if not installed and used in accordance with the instructions, may cause harmful interference to radio communications. However, there is no guarantee that interference will not occur in a particular installation. If this equipment does cause harmful interference to radio or television reception, which can be determined by turning the equipment off and on, the user is encouraged to try to correct the interference by one of the following measures:

- Reorient or relocate the receiving antenna.
- Increase the separation between the equipment and receiver.
- Connect the equipment into an outlet on a circuit different from that to which the receiver is connected.
- Consult the dealer or an experienced radio/TV technician for help.

FCC Caution: Any changes or modifications not expressly approved by the party responsible for compliance could void the user's authority to operate this equipment.

This device complies with Part 15 of the FCC Rules. Operation is subject to the following two conditions: (1) This device may not cause harmful interference, and (2) this device must accept any interference received, including interference that may cause undesired operation.

### IMPORTANT NOTE:

#### Radiation Exposure Statement:

This equipment complies with FCC radiation exposure limits set forth for an uncontrolled environment. This equipment should be installed and operated with minimum distance 23.2cm between the radiator & your body.

This transmitter must not be co-located or operating in conjunction with any other antenna or transmitter.

Country Code selection feature to be disabled for products marketed to the US/CANADA



### Professional installation instruction

Please be advised that due to the unique function supplied by this product, the device is intended for use with our interactive entertainment software and licensed third-party only. The product will be distributed through controlled distribution channel and installed by trained professional and will not be sold directly to the general public through retail store.

1. Installation personal  
This product is designed for specific application and needs to be installed by a qualified personal who has RF and related rule knowledge. The general user shall not attempt to install or change the setting.
2. Installation location  
The product shall be installed at a location where the radiating antenna can be kept 23.2cm from nearby person in normal operation condition to meet regulatory RF exposure requirement.
3. External antenna  
Use only the antennas which have been approved by the applicant. The non-approved antenna(s) may produce unwanted spurious or excessive RF transmitting power which may lead to the violation of FCC limit and is prohibited.
4. Installation procedure  
Please refer to user's manual for the detail.
5. Warning  
Please carefully select the installation position and make sure that the final output power does not exceed the limit set force in relevant rules. The violation of the rule could lead to serious federal penalty.

### **Industry Canada statement**

This device complies with Industry Canada's licence-exempt RSSs. Operation is subject to the following two conditions:

(1) This device may not cause interference; and (2) This device must accept any interference, including interference that may cause undesired operation of the device.

Cet appareil est conforme aux CNR exemptes de licence d'Industrie Canada. Son fonctionnement est soumis aux deux conditions suivantes:

(1) Ce dispositif ne peut causer d'interférences; et(2) Ce dispositif doit accepter toute interférence, y compris les interférences qui peuvent causer un mauvais fonctionnement de l'appareil.

Caution:

(i) the maximum antenna gain permitted for devices in the bands 5250-5350 MHz and 5470-5725 MHz shall comply with the e.i.r.p. limit; and

(ii) the maximum antenna gain permitted for devices in the band 5725-5825 MHz shall comply with the e.i.r.p. limits specified for point-to-point and non point-to-point operation as appropriate.

(iii) Users should also be advised that high-power radars are allocated as primary users (i.e. priority users) of the bands 5250-5350 MHz and 5650-5850 MHz and that these radars could cause interference and/or damage to LE-LAN devices.

#### Avertissement:

(i) le gain maximal d'antenne permis pour les dispositifs utilisant les bandes 5 250-5 350 MHz et 5 470-5 725 MHz doit se conformer à la limite de p.i.r.e.;

(ii) le gain maximal d'antenne permis (pour les dispositifs utilisant la bande 5 725-5 825 MHz) doit se conformer à la limite de p.i.r.e. spécifiée pour l'exploitation point à point et non point à point, selon le cas.

(iii) De plus, les utilisateurs devraient aussi être avisés que les utilisateurs de radars de haute puissance sont désignés utilisateurs principaux (c.-à-d., qu'ils ont la priorité) pour les bandes 5 250-5 350 MHz et 5 650-5 850 MHz et que ces radars pourraient causer du brouillage et/ou des dommages aux dispositifs LAN-EL.

#### Radiation Exposure Statement:

This equipment complies with IC radiation exposure limits set forth for an uncontrolled environment. This equipment should be installed and operated with minimum distance 26.6cm between the radiator & your body.

#### Déclaration d'exposition aux radiations:

Cet équipement est conforme aux limites d'exposition aux rayonnements IC établies pour un environnement non contrôlé. Cet équipement doit être installé et utilisé avec un minimum de 26.6 cm de distance entre la source de rayonnement et votre corps.

#### Professional installation instruction

##### 1. Installation personal

This product is designed for specific application and needs to be installed by a qualified personal who has RF and related rule knowledge. The general user shall not attempt to install or change the setting.

##### 2. Installation location

The product shall be installed at a location where the radiating antenna can be kept 26.6cm from nearby person in normal operation condition to meet regulatory RF exposure

requirement.

3. External antenna

Use only the antennas which have been approved by the applicant. The non-approved antenna(s) may produce unwanted spurious or excessive RF transmitting power which may lead to the violation of ISED limit and is prohibited.

4. Installation procedure

Please refer to user's manual for the detail.

Warning

Please carefully select the installation position and make sure that the final output power does not exceed the limit set force in relevant rules. The violation of the rule could lead to serious federal penalty.

Instructions d'installation professionnelle

Veillez noter que l'appareil etant dedie a une fonction unique, il doit etre utilise avec notre logiciel propriétaire de divertissement interactif . Ce produit sera propose par un reseau de distribution controle et installe par des professionnels; il ne sera pas propose au grand public par le reseau de la grande distribution.

1. Installation

Ce produit est destine a un usage specifique et doit etre installe par un personnel qualifie maitrisant les radiofrequences et les regles s'y rapportant. L'installation et les reglages ne doivent pas etre modifies par l'utilisateur final.

2. Emplacement d'installation

En usage normal, afin de respecter les exigences reglementaires concernant l'exposition aux radiofrequences, ce produit doit etre installe de facon a respecter une distance de 26.6 cm entre l'antenne emettrice et les personnes.

3. Antenn externe.

Utiliser uniuquement les antennes approuvees par le fabricant. L'utilisation d'autres antennes peut conduire a un niveau de rayonnement essentiel ou non essentiel depassant les niveaux limites definis par FCC/IC, ce qui est interdit.

4. Procedure d'installation

Consulter le manuel d'utilisation.

5. Avertissement

Choisir avec soin la position d'installation et s'assurer que la puissance de sortie ne depasse pas les limites en vigueur. La violation de cette regle peut conduire a de serieuses penalites federales.

DETACHABLE ANTENNA USAGE

This radio transmitter (IC: 4216A-BA3621PA1 / Model: DBA-3621PA1) has been approved by ISED to operate with the antenna type listed below with maximum permissible gain indicated. Antenna types not included in this list, having a gain greater than the maximum gain indicated

for that type, are strictly prohibited for use with this device.

Le présent émetteur radio (IC: 4216A-BA3621PA1 / Model: DBA-3621PA1) a été approuvé par ISED pour fonctionner avec les types d'antenne énumérés ci-dessous et ayant un gain admissible maximal. Les types d'antenne non inclus dans cette liste, et dont le gain est supérieur au gain maximal indiqué, sont strictement interdits pour l'exploitation de l'émetteur.

#### Approved antenna(s) list

Type	Gain	Brand	Manufacturer
Dipole	2.4~2.45GHz----3.5dBi 5.15~5.35GHz---6.0dBi 5.7~5.85GHz---5.5dBi	whayu	whayu

#### CE Mark Warning:

This is a Class B product. In a domestic environment, this product may cause radio interference, in which case the user may be required to take adequate measures.

1. A safety grounding system is necessary to protect your outdoor installation from lightning strikes and the build-up of static electricity.  
When mounting the Outdoor Access Point on the pole or solid wall, you have to connect the Outdoor Access Point to the same grounding system\* with the AC wall outlet.  
\* The grounding system must comply with the National Electrical Code and safety standards that apply in your country.

2. Instructions for the installation of that conductor to building earth by a SKILLED PERSON.

3. Please contact the authorized distributor of D-Link for related accessories (outdoor interconnection cable, cable gland, cable, etc.) for purchase and installation.

1. Un système de mise à la terre est nécessaire pour protéger votre installation extérieure de la foudre et de l'accumulation d'électricité statique. Lorsque vous installez le point d'accès extérieur sur un poteau ou un mur, vous devez le raccorder au même système de mise à la terre\* que la prise électrique.

\* Le système de mise à la terre doit être conforme aux réglementations et aux normes de sécurité en vigueur dans votre pays.

2. Instructions pour l'installation de ce conducteur à la terre du bâtiment par une PERSONNE QUALIFIÉE.

3. Contactez le distributeur agréé de D-Link pour les accessoires connexes (câble d'interconnexion extérieur, passe-câble, câble, etc.) pour l'achat et l'installation.

# Notes

# Notes

# Notes

# Notes





**D-Link**<sup>®</sup>  
Building Networks for People



Ver. 1.00(WW)\_90x130  
2020/07/20  
290726002820A10