

Appendix B – System Check Plots

Date: 2024/9/5

System Performance Check at 2450 MHz

DUT: D2450V2_SN712

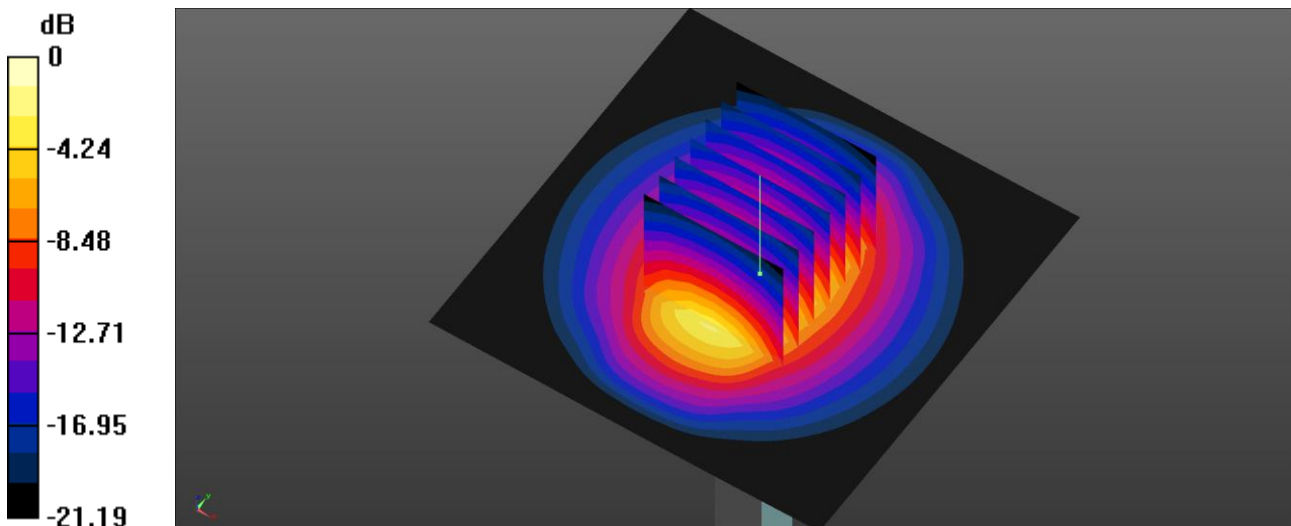
Communication System: UID 0, CW (0); Frequency: 2450 MHz;Duty Cycle: 1:1
Medium parameters used: $f = 2450$ MHz; $\sigma = 1.802$ S/m; $\epsilon_r = 39.359$; $\rho = 1000$ kg/m³
Phantom section: Flat Section
Measurement Standard: DASYS

DASY5.2 Configuration:

- Area Scan setting - Find Secondary Maximum Within:2.0dB and with a peak SAR value greater than 0.5 W/Kg
- Probe: EX3DV4 - SN3847; ConvF(7.17, 7.17, 7.17) @ 2450 MHz; Calibrated: 2024/2/21
- Sensor-Surface: 1.4mm (Mechanical Surface Detection)
- Electronics: DAE4 Sn1253; Calibrated: 2024/4/22
- Phantom: ELI; Type: QD OVA 002 AA; Serial: 1175
- Measurement SW: DASY52, Version 52.10 (4); SEMCAD X Version 14.6.14 (7501)

System Performance Check at 2450MHz/Area Scan (71x71x1): Interpolated grid: dx=1.200 mm, dy=1.200 mm
Maximum value of SAR (interpolated) = 5.19 W/kg

System Performance Check at 2450MHz/Zoom Scan (7x7x7)/Cube 0: Measurement grid: dx=5mm, dy=5mm, dz=5mm
Reference Value = 57.08 V/m; Power Drift = -0.10 dB
Peak SAR (extrapolated) = 6.26 W/kg
SAR(1 g) = 2.77 W/kg; SAR(10 g) = 1.31 W/kg
Smallest distance from peaks to all points 3 dB below = 9 mm
Ratio of SAR at M2 to SAR at M1 = 51.7%
Maximum value of SAR (measured) = 5.22 W/kg



0 dB = 5.22 W/kg = 7.18 dBW/kg

Date: 2024/10/30

System Performance Check at 2450 MHz

DUT: D2450V2_SN712

Communication System: UID 0, CW (0); Frequency: 2450 MHz;Duty Cycle: 1:1
Medium parameters used: $f = 2450$ MHz; $\sigma = 1.793$ S/m; $\epsilon_r = 39.697$; $\rho = 1000$ kg/m³
Phantom section: Flat Section
Measurement Standard: DASYS

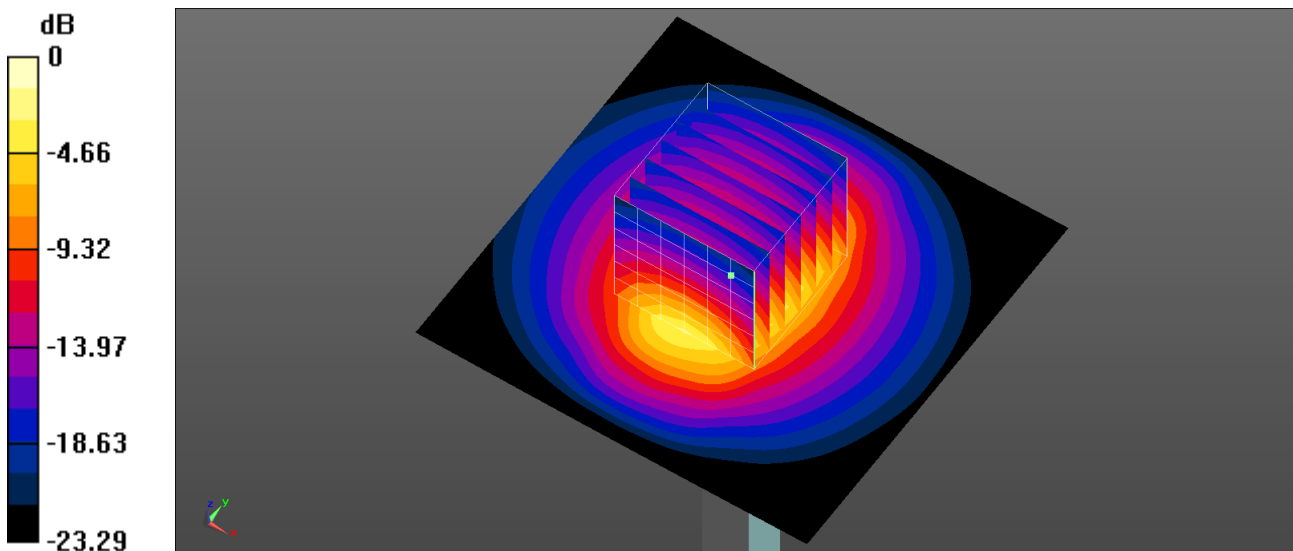
DASY5.2 Configuration:

- Area Scan setting - Find Secondary Maximum Within:2.0dB and with a peak SAR value greater than 0.5 W/Kg
- Probe: EX3DV4 - SN3977; ConvF(7.73, 7.11, 7.58) @ 2450 MHz; Calibrated: 2024/3/21
- Sensor-Surface: 1.4mm (Mechanical Surface Detection)
- Electronics: DAE4 Sn779; Calibrated: 2024/6/5
- Phantom: ELI; Type: QD OVA 002 AA; Serial: 1133
- Measurement SW: DASY52, Version 52.10 (4); SEMCAD X Version 14.6.14 (7501)

System Performance Check at 2450MHz/Area Scan (71x71x1): Interpolated grid: dx=1.200 mm, dy=1.200 mm
Maximum value of SAR (interpolated) = 4.32 W/kg

System Performance Check at 2450MHz/Zoom Scan (7x7x7)/Cube 0: Measurement grid: dx=5mm, dy=5mm, dz=5mm

Reference Value = 54.89 V/m; Power Drift = -0.17 dB
Peak SAR (extrapolated) = 5.28 W/kg
SAR(1 g) = 2.64 W/kg; SAR(10 g) = 1.24 W/kg
Smallest distance from peaks to all points 3 dB below = 9.2 mm
Ratio of SAR at M2 to SAR at M1 = 50.4%
Maximum value of SAR (measured) = 4.33 W/kg



0 dB = 4.33 W/kg = 6.36 dBW/kg

Date: 2024/9/5

System Performance Check at 5250 MHz

DUT: D5GHzV2_SN1021

Communication System: UID 0, CW (0); Frequency: 5250 MHz;Duty Cycle: 1:1
Medium parameters used: f = 5250 MHz; $\sigma = 4.712$ S/m; $\epsilon_r = 36.309$; $\rho = 1000$ kg/m³
Phantom section: Flat Section
Measurement Standard: DASYS

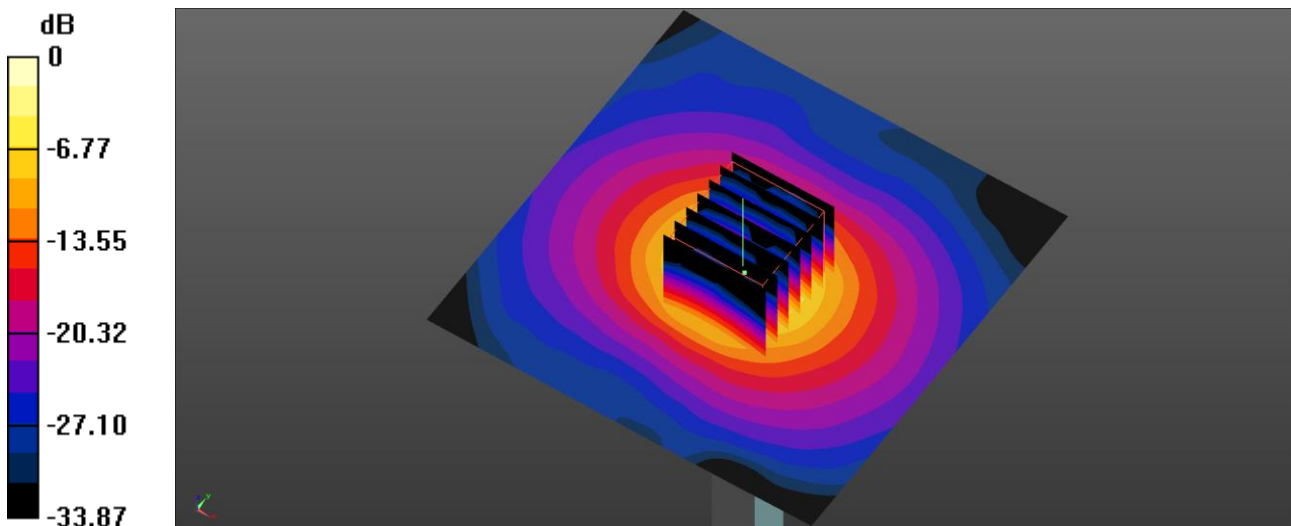
DASY5.2 Configuration:

- Area Scan setting - Find Secondary Maximum Within:2.0dB and with a peak SAR value greater than 0.5 W/Kg
- Probe: EX3DV4 - SN3847; ConvF(5.35, 5.35, 5.35) @ 5250 MHz; Calibrated: 2024/2/21
- Sensor-Surface: 1.4mm (Mechanical Surface Detection)
- Electronics: DAE4 Sn1253; Calibrated: 2024/4/22
- Phantom: ELI; Type: QD OVA 002 AA; Serial: 1175
- Measurement SW: DASY52, Version 52.10 (4); SEMCAD X Version 14.6.14 (7501)

System Performance Check at 5250MHz/Area Scan (91x91x1): Interpolated grid: dx=1.000 mm, dy=1.000 mm
Maximum value of SAR (interpolated) = 10.9 W/kg

System Performance Check at 5250MHz/Zoom Scan (7x7x7)/Cube 0: Measurement grid: dx=4mm, dy=4mm, dz=1.4mm

Reference Value = 55.18 V/m; Power Drift = -0.11 dB
Peak SAR (extrapolated) = 19.8 W/kg
SAR(1 g) = 4.11 W/kg; SAR(10 g) = 1.18 W/kg
Smallest distance from peaks to all points 3 dB below = 7.9 mm
Ratio of SAR at M2 to SAR at M1 = 62.3%
Maximum value of SAR (measured) = 11.3 W/kg



0 dB = 11.3 W/kg = 10.53 dBW/kg

Date: 2024/9/5

System Performance Check at 5600 MHz

DUT: D5GHzV2_SN1021

Communication System: UID 0, CW (0); Frequency: 5600 MHz;Duty Cycle: 1:1
Medium parameters used: $f = 5600$ MHz; $\sigma = 5.06$ S/m; $\epsilon_r = 35.83$; $\rho = 1000$ kg/m³
Phantom section: Flat Section
Measurement Standard: DASYS

DASY5.2 Configuration:

- Area Scan setting - Find Secondary Maximum Within:2.0dB and with a peak SAR value greater than 0.5 W/Kg
- Probe: EX3DV4 - SN3847; ConvF(4.66, 4.66, 4.66) @ 5600 MHz; Calibrated: 2024/2/21
- Sensor-Surface: 1.4mm (Mechanical Surface Detection)
- Electronics: DAE4 Sn1253; Calibrated: 2024/4/22
- Phantom: ELI; Type: QD OVA 002 AA; Serial: 1175
- Measurement SW: DASY52, Version 52.10 (4); SEMCAD X Version 14.6.14 (7501)

System Performance Check at 5600MHz/Area Scan (91x91x1): Interpolated grid: dx=1.000 mm, dy=1.000 mm
Maximum value of SAR (interpolated) = 12.8 W/kg

System Performance Check at 5600MHz/Zoom Scan (7x7x7)/Cube 0: Measurement grid: dx=4mm, dy=4mm, dz=1.4mm

Reference Value = 55.87 V/m; Power Drift = -0.13 dB

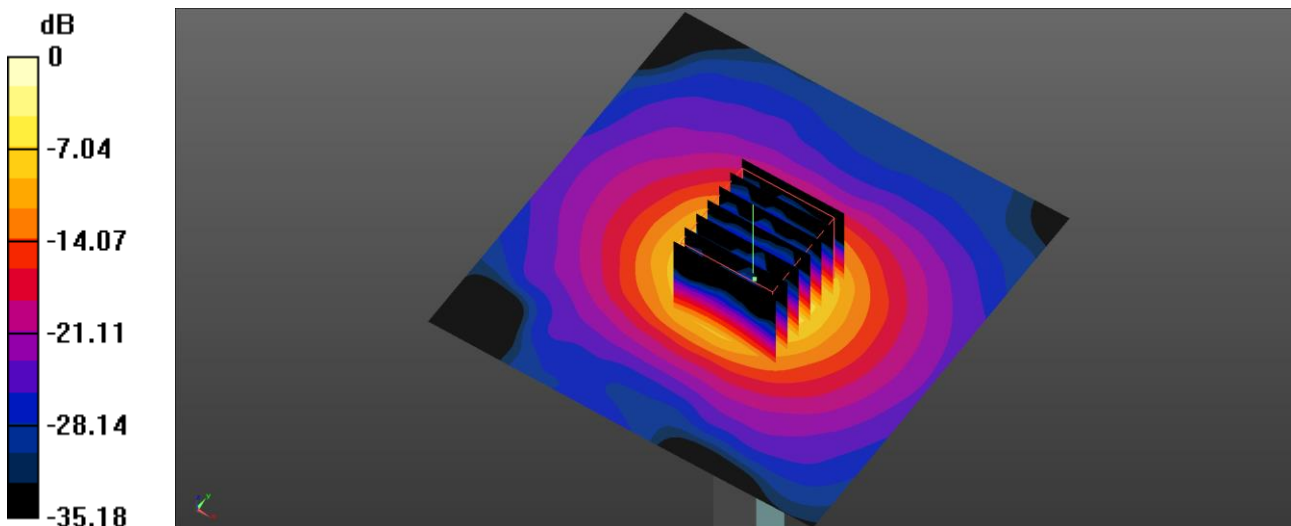
Peak SAR (extrapolated) = 24.1 W/kg

SAR(1 g) = 4.22 W/kg; SAR(10 g) = 1.16 W/kg

Smallest distance from peaks to all points 3 dB below = 7.9 mm

Ratio of SAR at M2 to SAR at M1 = 59.5%

Maximum value of SAR (measured) = 13.0 W/kg



0 dB = 13.0 W/kg = 11.14 dBW/kg

Date: 2024/9/5

System Performance Check at 5800 MHz

DUT: D5GHzV2_SN1021

Communication System: UID 0, CW (0); Frequency: 5800 MHz;Duty Cycle: 1:1
Medium parameters used: $f = 5800$ MHz; $\sigma = 5.301$ S/m; $\epsilon_r = 35.509$; $\rho = 1000$ kg/m³
Phantom section: Flat Section
Measurement Standard: DASYS

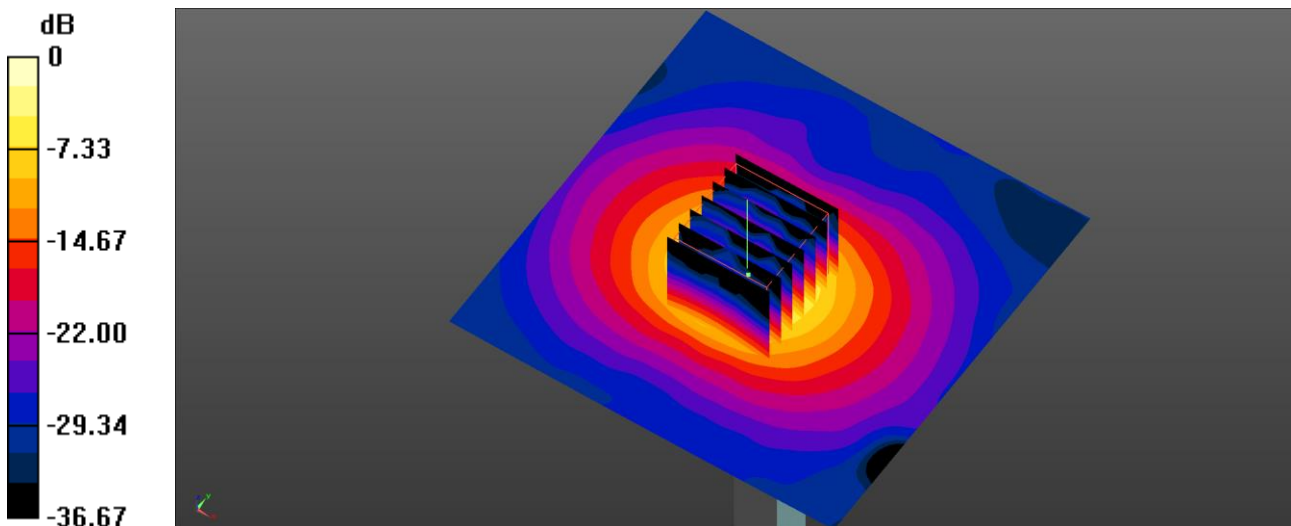
DASY5.2 Configuration:

- Area Scan setting - Find Secondary Maximum Within:2.0dB and with a peak SAR value greater than 0.5 W/Kg
- Probe: EX3DV4 - SN3847; ConvF(4.79, 4.79, 4.79) @ 5800 MHz; Calibrated: 2024/2/21
- Sensor-Surface: 1.4mm (Mechanical Surface Detection)
- Electronics: DAE4 Sn1253; Calibrated: 2024/4/22
- Phantom: ELI; Type: QD OVA 002 AA; Serial: 1175
- Measurement SW: DASY52, Version 52.10 (4); SEMCAD X Version 14.6.14 (7501)

System Performance Check at 5800MHz/Area Scan (91x91x1): Interpolated grid: dx=1.000 mm, dy=1.000 mm
Maximum value of SAR (interpolated) = 12.0 W/kg

System Performance Check at 5800MHz/Zoom Scan (7x7x7)/Cube 0: Measurement grid: dx=4mm, dy=4mm, dz=1.4mm

Reference Value = 50.49 V/m; Power Drift = 0.00 dB
Peak SAR (extrapolated) = 23.0 W/kg
SAR(1 g) = 4.17 W/kg; SAR(10 g) = 1.19 W/kg
Smallest distance from peaks to all points 3 dB below = 7.4 mm
Ratio of SAR at M2 to SAR at M1 = 59.9%
Maximum value of SAR (measured) = 12.2 W/kg



0 dB = 12.2 W/kg = 10.86 dBW/kg