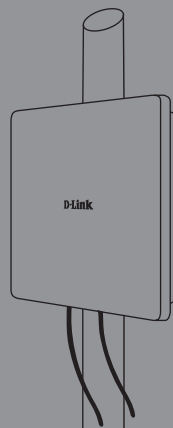




Quick Installation Guide

Nuclias Connect AC1200 Wave 2 Outdoor Access Point

This document will guide you through the basic installation process for your new Nuclias Connect AC1200 Wave 2 Outdoor Access Point
DAP-3666



Before You Begin

This chapter describes safety precautions and product information you have to know and check before installing DAP-3666.

Professional Installation Required

1. Please seek assistance from a professional installer who is well trained in the RF installation and knowledgeable in the local regulations.
2. The DAP-3666 is distributed through distributor and system installer with professional technicians and will not be sold directly through retail store. To keep you safe and install the hardware properly, please read and follow these safety precautions.

Safety Precautions

To keep you safe and install the hardware properly, please read and follow these safety precautions.

1. If you are installing an access point for the first time, for your safety as well as others', please seek assistance from a professional installer who has received safety training on the hazards involved.
2. Keep safety as well as performance in mind when selecting your installation site, especially where there are electric power and phone lines.
3. When installing your antenna, note the following:
 - Do not use a metal ladder;
 - Do not work on a wet or windy day;
 - Wear shoes with rubber soles and heels, rubber gloves, long sleeved shirt or jacket.
4. When the system is operational, avoid standing directly in front of the antenna. Strong RF fields are present when the transmitter is on.
5. A safety grounding system is necessary to protect your outdoor installation from lightning strikes and the build-up of static electricity. When mounting the Outdoor AP on the antenna mast, you have to connect the Outdoor AP to the same grounding system* with the AC wall outlet.

* The grounding system must comply with the National Electrical Code and safety standards that apply in your country.
6. Always check with a qualified electrician if you are in doubt as to whether your outdoor installation is properly grounded.

Quick Install Guide

This installation guide provides basic instructions for installing the DAP-3666 Nuclias Connect AC1200 Wave 2 Outdoor Access Point on your network. For additional information about how to use the Access Point, please see the datasheet and user manual from the D-Link support website.

Minimum System Requirements

Computer with Windows, MAC OS, or Linux-based operating system, and an Ethernet adapter installed

- Mozilla Firefox 52.0 or higher, Internet Explorer 11 or higher, Safari 10.1 or higher, Google Chrome 59 or higher.

Package Contents

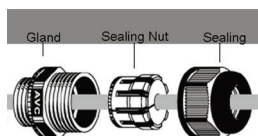
- DAP-3666 Nuclias Connect AC1200 Wave 2 Outdoor Access Point
- Quick Installation Guide
- Mounting kit (Wall/Pole Mount)
 - Stainless steel mount base x 1
 - Stainless tie back straps x 2
 - Wall screw x 4
 - Wall plug x 4
 - Stainless mount screw (hexagonal hole) x1
- Hexagon Socket Spanner
- Two LAN Port Waterproof Enclosure
- Grounding Wire

If any of the above items are missing, please contact your reseller.

NOTE no PSU supplied. To power the units use an D-Link PoE switch, DPE-311GI or 802.3af PoE adapter.

Physical Installation

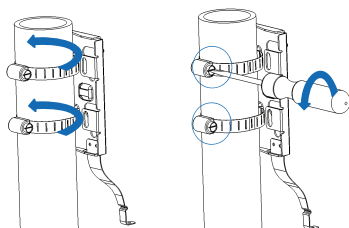
STEP 1: Connect an Ethernet Cable to the LAN1 (PoE) Port on the AP.



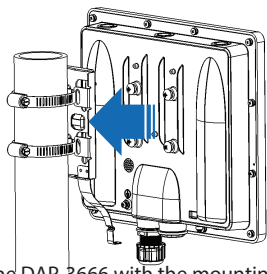
STEP 2: Mount the AP to a Pole or Wall

2A: Mounting The DAP-3666 On A Pole

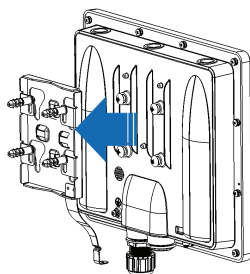
Pole Mount



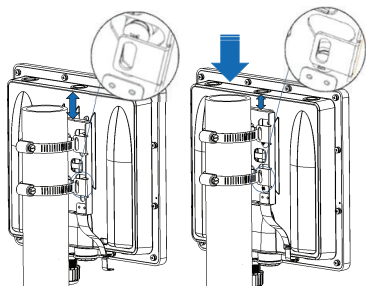
Secure mount base to the pole with two stainless tie back strap sets. Ensure that the tie back is locked securely.



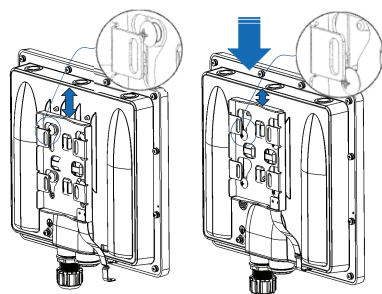
Align the DAP-3666 with the mounting plate



Align the DAP-3666 with the mounting plate



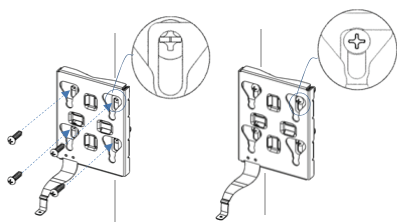
Once aligned, slide the device down so that the mounting plate securely locks into the DAP-3666



Once aligned, slide the device down so that the mounting plate securely locks into the DAP-3666

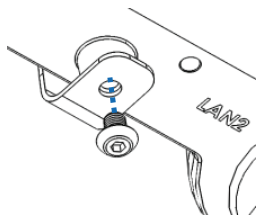
2B: Mounting The DAP-3666 On A Wall

Wall Mount

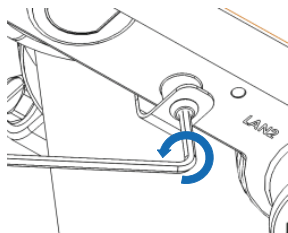


Securely mount the base to the wall using wall plug and wall screw.

STEP 3: Install Mount Screw to Fix DAP-3666 On A Mounting (Pole/Wall Mount base)



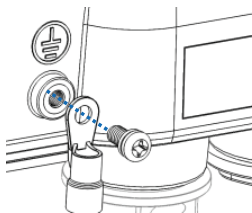
Use the included mount screw (hexagonal hole) to lock the DAP-3666 to the pole/wall mount



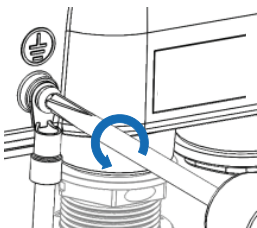
With the included hexagon socket spanner, tighten the mount screw until the DAP-3666 is secured.

STEP 4: Connect Grounding Wire

A grounding wire is recommended to protect your device from lightning strikes and the buildup of static electricity.



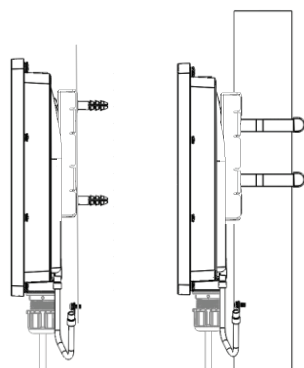
Attach the grounding wire to the DAP-3666 using the included screw.



Tighten the grounding wire to the DAP-3666 until it is securely attached.

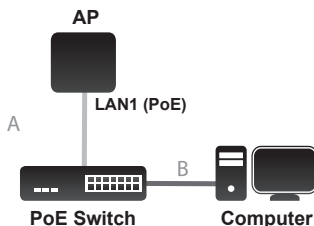
Wall Mount

Pole Mount



Attach the other end of the grounding wire to either the wall or pole mount. Ensure that the wall or pole mount is connected to an electrical ground.

STEP 5: Configuring the Access Point



Note: D-Link recommends configuring the device before mounting it.

Using D-Link Nuclias Connect

The DAP-3666 is designed to be managed through D-Link Nuclias Connect. Refer to the D-Link Nuclias Connect Manual for detailed configuration instructions.

Figure 4: Connecting through D-Link Nuclias Connect

1. Download the free Nuclias Connect

app from the App Store or Google Play by searching for Nuclias Connect or by scanning the QR code below.



2. Open the Nuclias Connect app and follow the onscreen instructions to discover and set up your device.

Manual Configuration

If you are not using Nuclias Connect, you may manually configure the DAP-3666 using its web user interface (UI). Refer to the DAP-3666 User Manual for detailed configuration instructions. Use the following methods to access the web user interface:

Note: The management computer must be in the same subnet as the DAP-3666.

1. Use an Ethernet cable to connect the management computer to the PoE switch or to the PoE Injector the DAP-3666 is connected to.
2. Open a web browser on the management computer and type in **dap3666.local** in the address field and press **Enter**.
3. When prompted, enter the default login credentials:
User name: **admin**
Password: **admin**

Federal Communication Commission Interference Statement

This device complies with Part 15 of the FCC Rules. Operation is subject to the following two conditions: (1) This device may not cause harmful interference, and (2) this device must accept any interference received, including interference that may cause undesired operation.

This equipment has been tested and found to comply with the limits for a Class B digital device, pursuant to Part 15 of the FCC Rules. These limits are designed to provide reasonable protection against harmful interference in a residential installation. This equipment generates, uses and can radiate radio frequency energy and, if not installed and used in accordance with the instructions, may cause harmful interference to radio communications. However, there is no guarantee that interference will not occur in a particular installation. If this equipment does cause harmful interference to radio or television reception, which can be determined by turning the equipment off and on, the user is encouraged to try to correct the interference by one of the following measures:

- Reorient or relocate the receiving antenna.
- Increase the separation between the equipment and receiver.
- Connect the equipment into an outlet on a circuit different from that to which the receiver is connected.
- Consult the dealer or an experienced radio/TV technician for help.

FCC Caution:

- Any changes or modifications not expressly approved by the party responsible for compliance could void the user's authority to operate this equipment.
- This transmitter must not be co-located or operating in conjunction with any other antenna or transmitter.

Radiation Exposure Statement:

This equipment complies with FCC radiation exposure limits set forth for an uncontrolled environment. This equipment should be installed and operated with minimum distance 20cm between the radiator & your body.

Note: The country code selection is for non-US model only and is not available to all US model. Per FCC regulation, all WiFi product marketed in US must fixed to US operation channels only.