

## ***Appendix C – Highest Test Plots***

Test Date : 2024-10-02 | Ambient Temp : 22.6 °C | Tissue Temp : 21.2 °C

**Test Mode**

**1\_WLAN2.4G\_802.11b\_Horizontal-Down\_5mm\_Ch11\_Ant 1**

**Device Under Test Properties**

Manufacturer or Brand	Model No. or Code Name	Sample No. or IMEI	DUT Type
D-Link	AC13U	A011	Dongle

**Exposure Conditions**

Phantom Section	Band	Group, UID	Frequency [MHz], Channel Number	Conversion Factor	TSL Conductivity [S/m]	TSL Permittivity
Flat	WLAN 2.4GHz	WLAN, 10012 - CAB	2462.000, 11	7.09	1.79	38.1

**Hardware Setup**

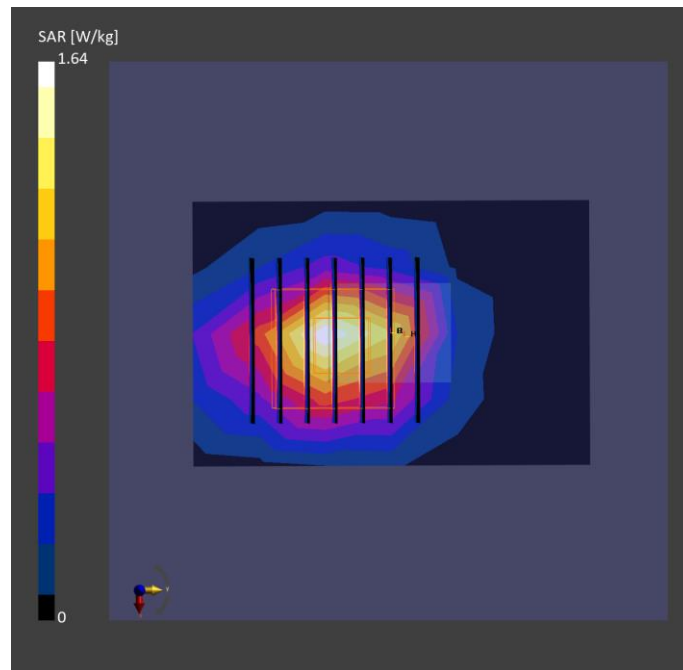
Phantom	Tissue Simulating Liquid	Probe   Calibration Date	DAE   Calibration Date
ELI V8.0 (20deg probe tilt) - 2179	HBBL-600-10000	EX3DV4 - SN7756 / 2024-09-04	DAE4 Sn1742 / 2024-08-15

**Scan Setup**

	Area Scan	Zoom Scan
Grid Extents [mm]	48.0 x 72.0	30.0 x 30.0 x 30.0
Grid Steps [mm]	12.0 x 12.0	5.0 x 5.0 x 5.0
Sensor Surface [mm]	3.0	1.4
Graded Grid	N/A	Yes
Grading Ratio	N/A	1.4

**Measurement Results**

	Area Scan	Zoom Scan
psSAR-1g [W/kg]	1.27	<b>1.19</b>
psSAR-10g [W/kg]	0.594	<b>0.545</b>
Power Drift [dB]		-0.01
TSL Correction	Positive only	Positive only
M2 / M1 [%]		52.3
Dist 3dB Peak [mm]		10.0



Test Date : 2024-10-01 | Ambient Temp : 22.5 °C | Tissue Temp : 21.2 °C

**Test Mode**

**2\_WLAN5.3G\_802.11a\_Horizontal-Up\_5mm\_Ch56\_Ant 1+2**

**Device Under Test Properties**

Manufacturer or Brand	Model No. or Code Name	Sample No. or IMEI	DUT Type
D-Link	AC13U	A011	Dongle

**Exposure Conditions**

Phantom Section	Band	Group, UID	Frequency [MHz], Channel Number	Conversion Factor	TSL Conductivity [S/m]	TSL Permittivity
Flat	WLAN 5GHz	WLAN, 10062 - CAE	5280.000, 56	5.27	4.52	34.5

**Hardware Setup**

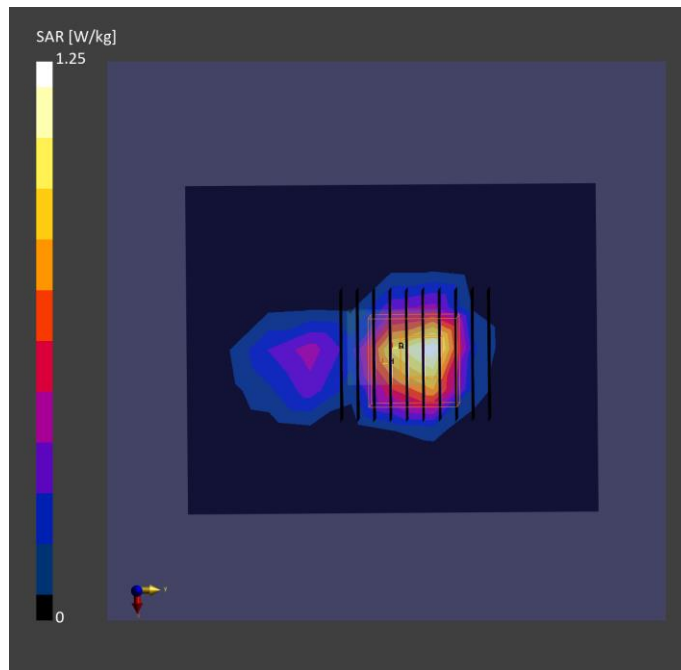
Phantom	Tissue Simulating Liquid	Probe   Calibration Date	DAE   Calibration Date
ELI V8.0 (20deg probe tilt) - 2179	HBBL-600-10000	EX3DV4 - SN7756 / 2024-09-04	DAE4 Sn1742 / 2024-08-15

**Scan Setup**

	Area Scan	Zoom Scan
Grid Extents [mm]	80.0 x 100.0	24.0 x 24.0 x 22.0
Grid Steps [mm]	10.0 x 10.0	4.0 x 4.0 x 1.4
Sensor Surface [mm]	3.0	1.4
Graded Grid	N/A	Yes
Grading Ratio	N/A	1.4

**Measurement Results**

	Area Scan	Zoom Scan
psSAR-1g [W/kg]	0.914	<b>0.857</b>
psSAR-10g [W/kg]	0.304	<b>0.269</b>
Power Drift [dB]		-0.10
TSL Correction	Positive only	Positive only
M2 / M1 [%]		60.7
Dist 3dB Peak [mm]		7.9



Test Date : 2024-10-01 | Ambient Temp : 22.5 °C | Tissue Temp : 21.2 °C

**Test Mode**

**3\_WLAN5.6G\_802.11a\_Horizontal-Up\_5mm\_Ch100\_Ant 2**

**Device Under Test Properties**

Manufacturer or Brand	Model No. or Code Name	Sample No. or IMEI	DUT Type
D-Link	AC13U	A011	Dongle

**Exposure Conditions**

Phantom Section	Band	Group, UID	Frequency [MHz], Channel Number	Conversion Factor	TSL Conductivity [S/m]	TSL Permittivity
Flat	WLAN 5GHz	WLAN, 10062 - CAE	5500.000, 100	4.7	4.76	34.1

**Hardware Setup**

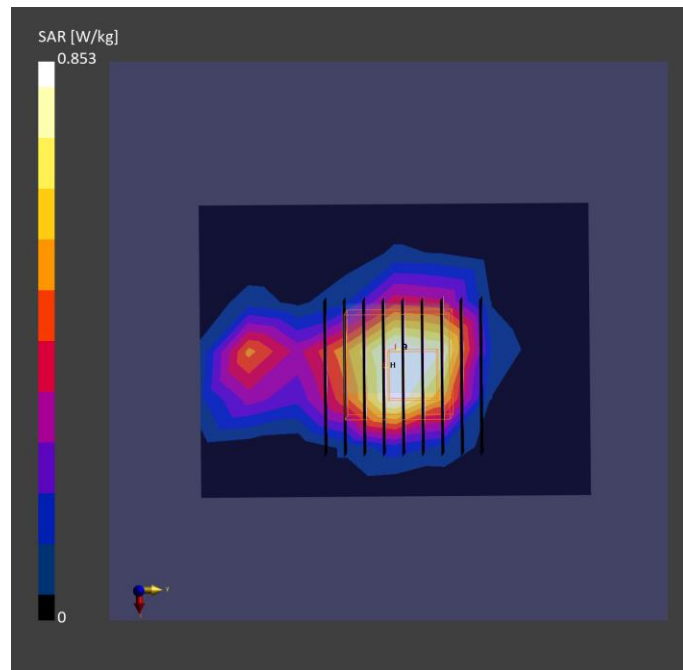
Phantom	Tissue Simulating Liquid	Probe   Calibration Date	DAE   Calibration Date
ELI V8.0 (20deg probe tilt) - 2179	HBBL-600-10000	EX3DV4 - SN7756 / 2024-09-04	DAE4 Sn1742 / 2024-08-15

**Scan Setup**

	Area Scan	Zoom Scan
Grid Extents [mm]	50.0 x 70.0	24.0 x 24.0 x 22.0
Grid Steps [mm]	10.0 x 10.0	4.0 x 4.0 x 1.4
Sensor Surface [mm]	3.0	1.4
Graded Grid	N/A	Yes
Grading Ratio	N/A	1.4

**Measurement Results**

	Area Scan	Zoom Scan
psSAR-1g [W/kg]	0.712	<b>0.819</b>
psSAR-10g [W/kg]	0.267	<b>0.278</b>
Power Drift [dB]		0.12
TSL Correction	Positive only	Positive only
M2 / M1 [%]		59.9
Dist 3dB Peak [mm]		7.6



Test Date : 2024-10-01 | Ambient Temp : 22.5 °C | Tissue Temp : 21.2 °C

**Test Mode**

**4\_WLAN5.8G\_802.11a\_Horizontal-Down\_5mm\_Ch157\_Ant 1+2**

**Device Under Test Properties**

Manufacturer or Brand	Model No. or Code Name	Sample No. or IMEI	DUT Type
D-Link	AC13U	A011	Dongle

**Exposure Conditions**

Phantom Section	Band	Group, UID	Frequency [MHz], Channel Number	Conversion Factor	TSL Conductivity [S/m]	TSL Permittivity
Flat	WLAN 5GHz	WLAN, 10062 - CAE	5785.000, 157	4.73	5.09	33.6

**Hardware Setup**

Phantom	Tissue Simulating Liquid	Probe   Calibration Date	DAE   Calibration Date
ELI V8.0 (20deg probe tilt) - 2179	HBBL-600-10000	EX3DV4 - SN7756 / 2024-09-04	DAE4 Sn1742 / 2024-08-15

**Scan Setup**

	Area Scan	Zoom Scan
Grid Extents [mm]	60.0 x 60.0	24.0 x 24.0 x 22.0
Grid Steps [mm]	10.0 x 10.0	4.0 x 4.0 x 1.4
Sensor Surface [mm]	3.0	1.4
Graded Grid	N/A	Yes
Grading Ratio	N/A	1.4

**Measurement Results**

	Area Scan	Zoom Scan
psSAR-1g [W/kg]	1.01	<b>1.11</b>
psSAR-10g [W/kg]	0.367	<b>0.377</b>
Power Drift [dB]		-0.16
TSL Correction	Positive only	Positive only
M2 / M1 [%]		56.2
Dist 3dB Peak [mm]		9.7

