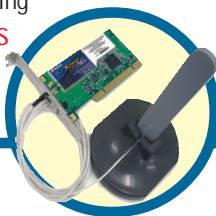


D-Link

Quick Installation Guide

This product works with the following operating system software: **Windows XP, Windows 2000, Windows Me, Windows 98SE**



DWL-AG520

Air Xpert™ Tri-Mode Dualband
Wireless PCI Adapter

Before You Begin

You must have at least the following:

- A desktop computer with an available PCI 2.2, 32-bit, 3.3 volt PCI slot
- At least a 500 MHz processor and 128MB of memory
- An 802.11a, 802.11b or 802.11g Access Point (for Infrastructure Mode) or another 802.11a, 802.11b, or 802.11g wireless adapter (for Ad-Hoc; Peer-to-Peer networking mode.)

Check Your Package Contents

These are the items included with your DWL-AG520 purchase:



DWL-AG520 Air Xpert Tri-Mode Dualband Wireless PCI Adapter



CD-ROM (containing Drivers, Manual and Warranty)

If any of the above items are missing, please contact your reseller.

1 Insert the D-Link CD Into Your Desktop PC

Turn on the computer and **Insert** the **D-Link Air Xpert DWL-AG520 Driver CD** in the CD-ROM drive.

The step-by-step instructions that follow are shown in **Windows XP**. The steps and screens are similar for the other Windows operating systems



Do **NOT** install the **DWL-AG520 Wireless PCI Adapter** into your computer before installing the driver software from the **D-Link CD!**

1


Continued...

The Install Screen will appear.

Click **Install Drivers**

If the CD Autorun function does not automatically start on your computer, go to **Start > Run** and type "D:\Setup.exe." If it does start, proceed to the next screen.

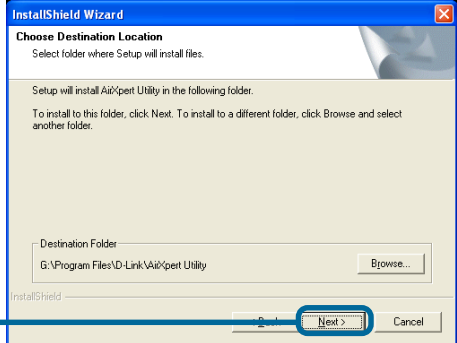
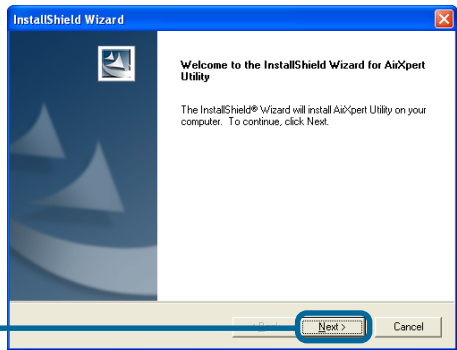
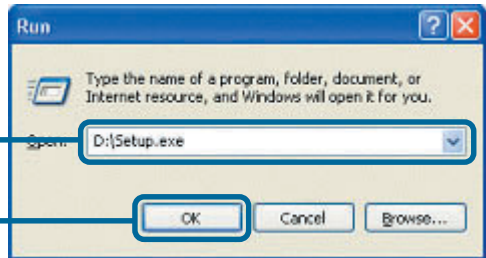
Type **"D:\Setup.exe."**

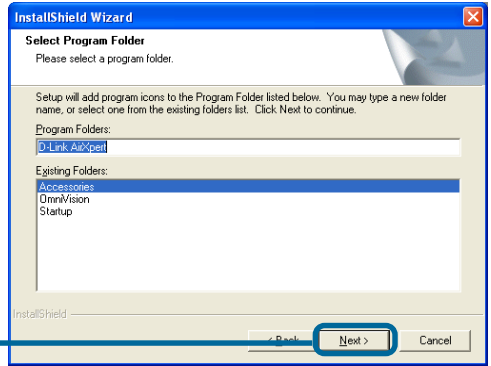
 The letter **"D"** represents the letter of the CD-ROM drive. Your CD-ROM drive may be a different drive letter.

Click **OK**

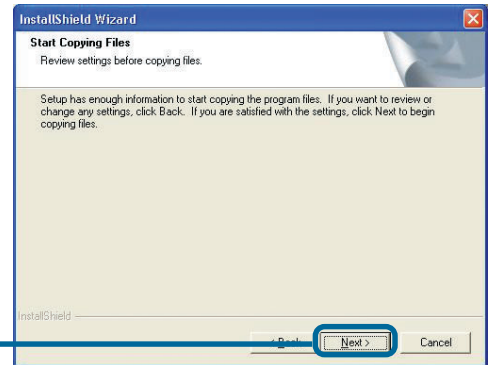
Click **Next**

Click **Next**

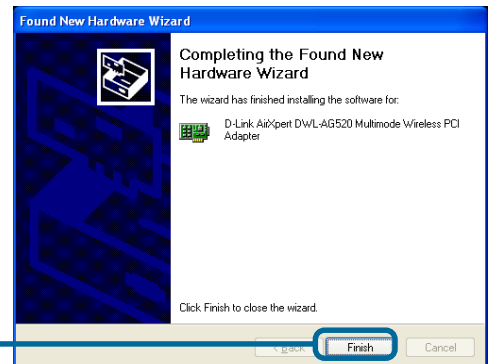




Click Next



Click Next

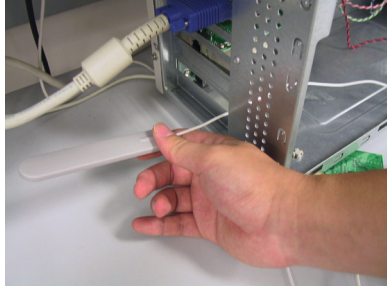


Click Finish

Shut down your computer

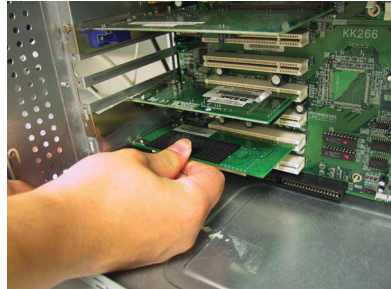
2 Installing the DWL-AG520 Wireless PCI Adapter in Your Computer

- A.** Make sure to turn off your computer and unplug the power cord before you begin. Remove the back or side cover of the computer.



- B.** Carefully guide the DWL-AG520's antenna through the PCI bracket opening adjacent to the PCI slot you intend to use for the DWL-AB520.

- C.** Install the DWL-AG520 carefully, and firmly set it into the available PCI slot (which is typically white or cream-colored).



- D.** Secure the DWL-AG520's back panel bracket with its mounting screw.

- E.** Replace the computer's cover.

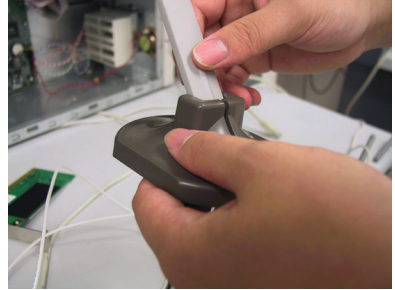


To avoid damage caused by static electricity, make sure to properly ground yourself by first touching a metal part of your computer to discharge any static electricity before working with the DWL-AG520.

2

Installing the DWL-AG520 Wireless PCI Adapter in Your Computer (cont.)

F. Gently connect the antenna to the antenna stand.



G. Finished!



Desk or Wall-mountable Antenna to wirelessly connect to 802.11a and 802.11b networks

Screw Mount
The screw that secures the adapter to the back of your computer fits into this slot.

Link/Activity LEDs
Indicates that the card is properly installed when the computer is on and blinks when data is being transmitted.

Antenna Cable — connects the DWL-AB520 PCI board to the external antenna

3

Restart Your Computer

When you restart your computer this **Found New Hardware Wizard (Windows XP)** screen will appear:

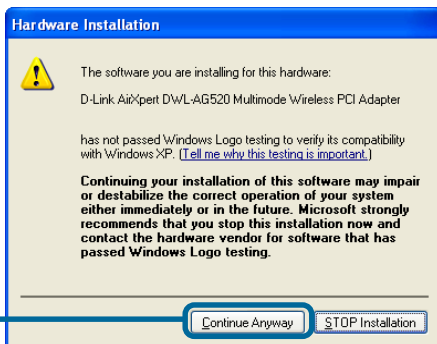
Select **Install the software automatically (Recommended)**

Click **Next**

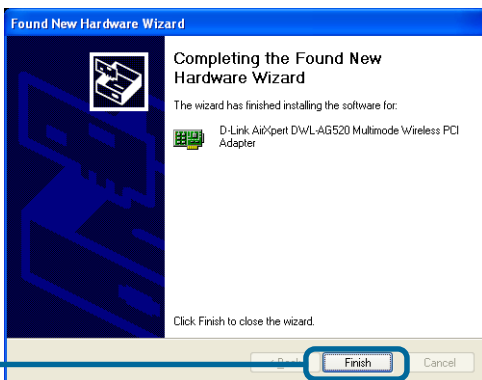


Warning: For Windows XP: This **Hardware Installation** alert screen may appear after the desktop computer restarts.


Click **Continue Anyway** to finalize the installation



Click **Finish** to finalize the installation.




3 Continued...

 For Windows 2000, this **Digital Signature Not Found** screen may appear after your computer restarts.

Click **Yes** to finalize the installation.



 The D-Link driver software for this device is undergoing Windows Logo testing. Microsoft certification is pending.

4 Your Installation is Complete!

After you've continued in Windows 2000, Me, or 98SE, the D-Link *Air Xpert* DWL-AG520 **Configuration Utility** will automatically start and the utility icon will appear in the bottom right hand corner of the desktop screen (systray). **If this icon appears GREEN, then you have successfully installed the DWL-AG520, are connected to a wireless network and are ready to communicate!**

If the utility icon does not appear, double-click the **shortcut icon** that has appeared on your desktop.



Double-click the **utility icon** to use the configuration utility.



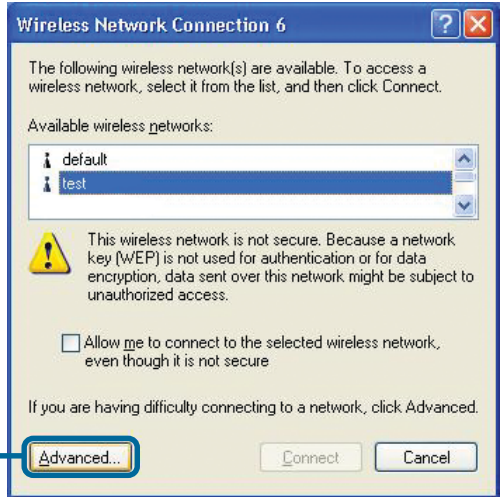
Appendix

For Windows XP, if you wish to use the AirXpert utility, please do the following steps.

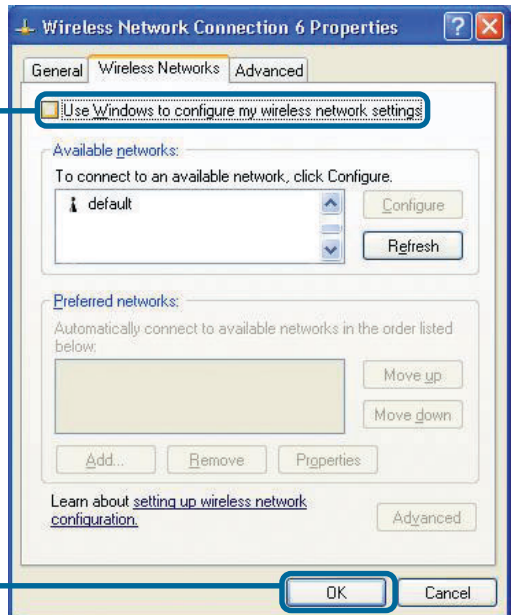
Click the **XP Networking icon** to use the Zero Configuration Wireless Settings.



Click **Advanced**



Uncheck "Use Windows to configure my wireless network settings."



Click **OK**

Appendix (Continued)

Using the Configuration Utility

A. Status: Displays the MAC Address of the Access Point that is associated with the DWL-AG520.

B. SSID: The Service Set Identifier is the name assigned to the wireless network. The factory SSID setting is set to **default**.

C. Frequency: Displays the current frequency used by the adapter.

D. Wireless Mode: The factory setting is set to Infrastructure. Ad-Hoc mode is used for peer-to-peer networking.

D-Link AirXpert Utility

- Link Info** (A) Status: Associated BSSID=00:40:05:DF:09:51
- Configuration** (B) SSID: default
- Advanced** (C) Frequency: 802.11b
- Site Survey** (D) Wireless Mode: Infrastructure
- About** (E) Encryption: Disabled
- (F) Tx Rate: 11.0 Mbps
- (G) Channel: 1
- (H) Signal Strength: 84%
- (I) Packet Count: Transmit (250) and Receive (0)

E. Encryption: Displays the current encryption status of the wireless connection.

F. TxRate: The default setting is **Auto**; meaning, TxRate settings are automatically determined by the DWL-AG520 depending on the distance from the access point.

G. Channel: Displays the channel information. By default, the channel is set to 6. Please note that the DWL-AG520 will automatically adjust channel depending on the Access Point.

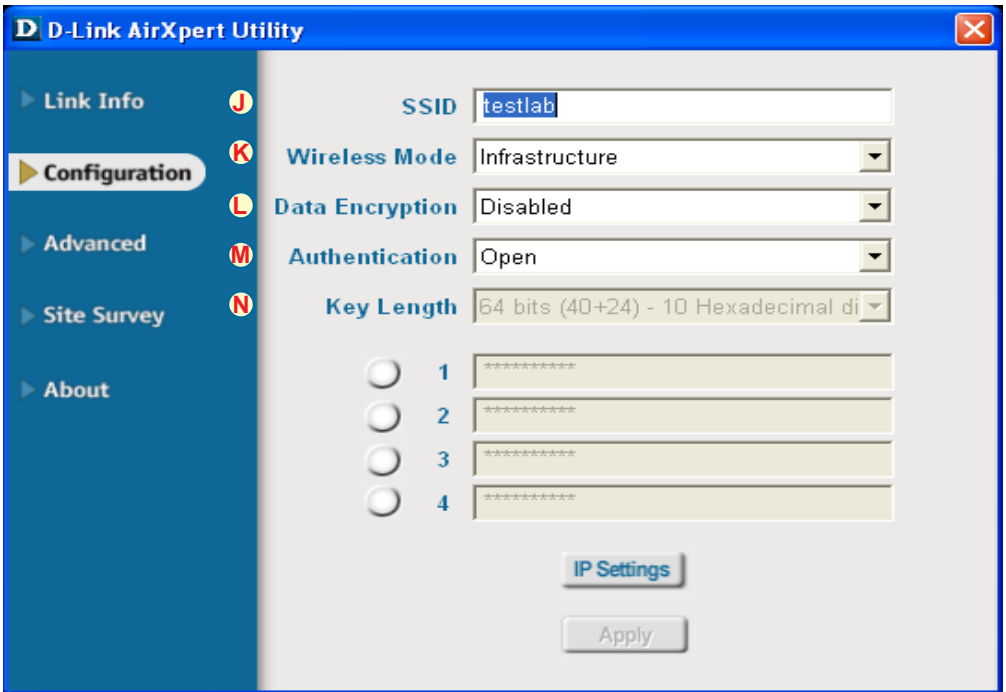
I. Packet Count: Graphically displays the statistics of data transmitted and received.

H. Signal Strength: Displays the Link Quality for the DWL-AG520 wireless connection to the access point. The Signal Strength represents the wireless signal between the access point and the DWL-AG520. The percentage coincides with the graphical bar.

J. SSID: The Service Set Identifier is the name assigned to the wireless network. The factory SSID setting is set to **default**. Make changes here to match the SSID on existing Wireless Router or Access Point.

K. Wireless Mode: The factory setting is set to **Infrastructure**. Ad-Hoc mode is used for peer-to-peer networking.

L. Data Encryption: The default setting is set to **Disabled**. The adapter supports WEP and AES when encryption is enabled.



M. Authentication: You can specify the authentication mode for the wireless network. The default setting is set to **Open Authentication**.

N. Key Length: When encryption is enabled, you will have the option to specify the level and key format of the encryption used. Select the appropriate Key Index : 1-4 and enter ACSII or hexadecimal digits in the appropriate field.

Notes

Technical Support

You can find software updates and user documentation on the D-Link website.

D-Link provides free technical support for customers within the United States and within Canada for the duration of the warranty period on this product.

U.S. and Canadian customers can contact D-Link technical support through our website, or by phone.

Tech Support for customers within the United States:

D-Link Technical Support over the Telephone:

(877) 453-5465

24 hours a day, seven days a week.

D-Link Technical Support over the Internet:

<http://support.dlink.com>

email:support@dlink.com

Tech Support for customers within Canada:

D-Link Technical Support over the Telephone:

(800) 361-5265

Monday to Friday 8:30am to 9:00pm EST

D-Link Technical Support over the Internet:

<http://support.dlink.ca>

email:support@dlink.ca

