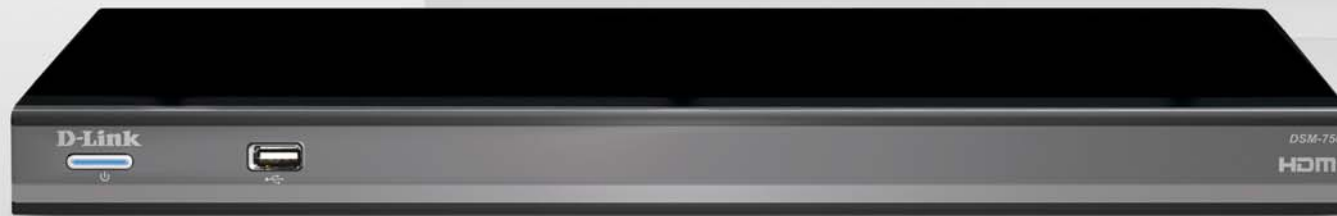


**D-Link®**



# User Manual

DSM-750

WIRELESS HD  
MEDIA CENTER EXTENDER  
MEDIA CENTER EXTENDER

---

# Table of Contents

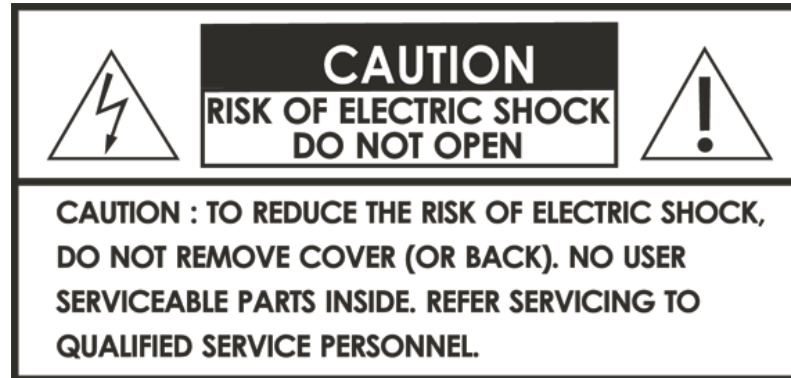
<b>Safety Information</b> .....	<b>4</b>	Configure Your Network Settings Manually .....	33
<b>Product Overview</b> .....	<b>7</b>	Completing the Setup Wizard .....	35
Package Contents.....	7	8-Digit Setup Key .....	37
Minimum System Requirements.....	8	Complete Extender Setup.....	37
Introduction .....	9	<b>Windows® Media Player 11 Setup</b> .....	<b>38</b>
Features.....	10	<b>Using Your DSM-750</b> .....	<b>47</b>
Hardware Overview .....	11	MediaLounge™ Home Page .....	47
Front Panel.....	11	My Media .....	47
Back Panel.....	12	Video.....	48
Using the Remote Control .....	13	Viewing a Video.....	49
<b>Connecting the DSM-750</b> .....	<b>15</b>	Subtitles .....	50
Video Connections.....	15	Music .....	51
Audio Connections.....	17	Organizing Music Files.....	52
Network Connections.....	19	Listening to Music .....	53
<b>Setup</b> .....	<b>20</b>	Browsing for Music .....	54
Wired Setup.....	21	Photo .....	55
Media Center Extender Optional Set Up .....	22	Organizing Photo Albums.....	56
Configure Your Network Settings Manually .....	24	Viewing a Photo .....	57
Wireless Setup.....	26	Viewing a Slideshow .....	58
Media Center Extender Optional Set Up .....	27	Search .....	59
Setup Wizard .....	29	USB Direct Menu .....	61
Manual Setup .....	30	Supported Formats .....	62
Encryption .....	31		

Windows Media Center Menu.....	63	Remove Setup Information.....	90
TV + Movies.....	64	Learn More.....	90
Music.....	65	Automatic Start.....	91
Pictures + Videos.....	66	Remote Control.....	91
Online Media.....	66	Launch Extender.....	92
Tasks > Settings.....	67		
Settings Menu.....	68	<b>Wireless Security.....</b>	<b>93</b>
A/V Output.....	68	What is WEP?.....	93
Aspect Ratio.....	68	What is WPA?.....	94
Video Output.....	69	<b>Wireless Installation Considerations.....</b>	<b>95</b>
Display Resolution.....	69	<b>Troubleshooting.....</b>	<b>96</b>
S/PDIF Audio Output.....	70	<b>Frequently Asked Questions.....</b>	<b>101</b>
Network.....	71	<b>Wireless Basics.....</b>	<b>103</b>
Wired Connection.....	72	<b>How to Check your Media.....</b>	<b>107</b>
Wireless Connection.....	76	Converting an Earlier WMV File.....	108
Slideshow.....	83	<b>Audio and Video Cables Guide.....</b>	<b>114</b>
Slideshow Delay.....	83	<b>Networking Basics.....</b>	<b>115</b>
Photo Scaling.....	84	Check your IP Address.....	115
Fade In/Fade Out.....	84	<b>Technical Specifications.....</b>	<b>116</b>
Slideshow Sequence.....	84	<b>Contacting Technical Support.....</b>	<b>118</b>
System.....	85	<b>Warranty.....</b>	<b>119</b>
Device Name.....	85	<b>Registration.....</b>	<b>124</b>
Screen Saver Delay.....	85		
Browse Display.....	86		
System Reset.....	87		
Update Device.....	87		
About.....	88		
Extender.....	89		
Set up Extender.....	89		

# Safety Information

For optimum performance, please read the following information carefully.

## Safety Precautions



The lightning flash with arrowhead symbol, within an equilateral triangle, is intended to alert users to the presence of uninsulated “dangerous voltage” within the product’s enclosure that may be of sufficient magnitude to constitute a risk of electric shock to persons.



The exclamation point within an equilateral triangle is intended to alert the user to the presence of important operating and maintenance (servicing) instructions in the literature accompanying the appliance.

**CAUTION!**  
THE POWER SUPPLY CORD IS USED AS THE MAIN DISCONNECT DEVICE. ENSURE THAT THE SOCKET-OUTLET IS LOCATED/INSTALLED NEAR THE EQUIPMENT AND IS EASILY ACCESSIBLE.

**CAUTION!**  
TO REDUCE THE RISK OF FIRE, ELECTRIC SHOCK, OR PRODUCT DAMAGE, DO NOT EXPOSE THE UNIT TO RAIN, MOISTURE, DRIPPING, OR SPLASHING. DO NOT PLACE OBJECTS FILLED WITH LIQUIDS UPON THE UNIT.

**CAUTION!**

- **DO NOT INSTALL OR PLACE THIS UNIT IN A BOOKCASE, BUILT-IN CABINET OR IN ANOTHER CONFINED SPACE. ENSURE THE UNIT IS WELL VENTILATED. TO PREVENT RISK OF ELECTRIC SHOCK OR FIRE HAZARD DUE TO OVERHEATING, ENSURE THAT CURTAINS AND ANY OTHER MATERIALS DO NOT OBSTRUCT THE VENTILATION VENTS.**
- **DO NOT OBSTRUCT THE UNIT'S VENTILATION OPENINGS WITH NEWSPAPERS, TABLECLOTHS, CURTAINS, AND SIMILAR ITEMS.**
- **DO NOT PLACE SOURCES OF NAKED FLAMES, SUCH AS LIGHTED CANDLES, ON THE UNIT.**
- **DISPOSE OF BATTERIES IN AN ENVIRONMENTALLY-FRIENDLY MANNER.**

**CAUTION!**

**TO PREVENT ELECTRIC SHOCK, MATCH THE WIDE BLADE OF THE PLUG TO THE WIDE SLOT OF THE ELECTRICAL OUTLET AND FULLY INSERT.**

This device is designed and manufactured to assure personal safety. Improper use can result in electric shock or fire hazard. The safeguards incorporated in this unit will protect you if you observe the following procedures for installation, use, and servicing. This device does not contain any user serviceable parts.

- **Carefully read and follow the Manual and Quick Setup Guide.**
- **Do not place the product near heat sources such as radiators, heat registers, stoves, or other products that produce heat.**
- **Do not use this product near water.**
- **Unplug the unit from the wall outlet before cleaning. Do not use liquid cleaners or aerosol cleaners. Use a damp cloth for cleaning.**
- **Power-supply cords should be routed so that they are not likely to be walked on or pinched by items placed upon or against them.**
- **Do not overload wall outlets.**
- **Do not use this product during a storm. Unplug the unit from the wall outlet. If the product is to be left unattended for a long period of time. This will prevent damage to the product due to lightning and power-line surges.**
- **Do not attempt to service this product yourself. Opening the cover may expose you to dangerous voltage or other hazards. For service, please contact a qualified service technician.**

### **Radio and TV Interference:**

This equipment has been tested and found to comply with the limits for a Class B digital device, pursuant to Part 15 of the FCC Rules. These limits are designed to provide reasonable protection against harmful interference in a residential installation. This equipment generates, uses and can radiate radio frequency energy and, if not installed and used in accordance with the instructions, may cause harmful interference to radio communications. However, there is no guarantee that interference will not occur in a particular installation. If this equipment does cause harmful interference to radio or television reception, which can be determined by turning the equipment off and on, the user is encouraged to try to correct the interference by one or more of the following measures:

- **Reorient or relocate the receiving antenna.**
- **Increase the separation between the equipment and receiver.**
- **Connect the equipment into an outlet on a circuit different from that to which the receiver is connected.**
- **Consult the dealer or an experienced radio/TV technician for help.**

FCC Caution: Any changes or modifications not expressly approved by the party responsible for compliance could void the user's authority to operate this equipment.

This device complies with Part 15 of the FCC Rules. Operation is subject to the following two conditions: (1) This device may not cause harmful interference, and (2) this device must accept any interference received, including interference that may cause undesired operation.

#### **Important Note:**

##### **Radiation Exposure Statement:**

*This equipment complies with FCC radiation exposure limits set forth for an uncontrolled environment. This equipment should be installed and operated with minimum distance 20cm between the radiator & your body.*

*This transmitter must not be co-located or operating in conjunction with any other antenna or transmitter.*

*The availability of some specific channels and/or operational frequency bands are country dependent and are firmware programmed at the factory to match the intended destination. The firmware setting is not accessible by the end user.*

#### **Industry Canada statement:**

This device complies with RSS-210 of the Industry Canada Rules. Operation is subject to the following two conditions:

(1) This device may not cause harmful interference, and (2) this device must accept any interference received, including interference that may cause undesired operation.

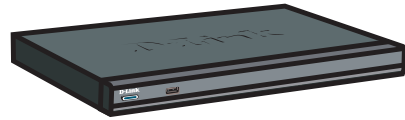
#### **Important Note:**

##### **Radiation Exposure Statement:**

*This equipment complies with IC radiation exposure limits set forth for an uncontrolled environment. This equipment should be installed and operated with minimum distance 20cm between the radiator & your body.*

*This device has been designed to operate with an antenna having a maximum gain of 2 dB. Antenna having a higher gain is strictly prohibited per regulations of Industry Canada. The required antenna impedance is 50 ohms.*

# Package Contents



D-Link DSM-750  
Wireless HD Media Center Extender



Remote Control  
(2 AA Batteries  
Included)



Wireless  
Antennas



Composite  
Audio/Video Cable



Ethernet Cable



Software, Product  
Documentation, and  
Warranty on CD



Quick Setup Guide

# Minimum System Requirements

- Standard or HD Television with HDMI, Component Video, S-Video, or Composite Video Input
- TV, Stereo, or A/V Receiver with Optical Digital, Coaxial Digital, or Composite Audio Input
- Wired or Wireless Network (100Mbps Ethernet or Wireless Draft 802.11n Network is Recommended for Optimal Video Streaming)

## FOR MEDIA CENTER EXTENDER MODE

PC with:

- 1GHz Processor
- 1GB RAM
- 200MB Hard Drive Space
- CD-ROM Drive
- Windows Vista® Home Premium or Ultimate
- To view live TV, a TV Tuner that supports Windows Vista is required

## FOR D-LINK MEDIALOUNGE™ MODE

PC with:

- 500MHz Processor
- 128MB Memory
- 100MB Hard Drive Space
- CD-ROM Drive
- Windows Vista® Home Basic or XP

## FOR INTERNET ACCESS

- Broadband Modem
- Router
- Subscription with an Internet Service Provider (ISP)



# Introduction

D-Link® introduces the latest addition to its multimedia family of slave products: the ***D-Link DSM-750 Wireless High-Definition (HD) Media Center Extender***. Using your home entertainment center from the comfort of the living room, the DSM-750 includes everything you need to instantly access and play music, videos, and photos. If you have Windows Vista® Home Premium or Ultimate, the Media Center Extender makes it possible to watch recorded and live TV, timeshift through live TV, and access Online Media on your television. The DSM-750 features 802.11g and draft 802.11n wireless technology and can also connect to a wired network. These options provide you with the maximum throughput for sharing and transferring digital media.

If you do not have Windows Vista Home Premium or Ultimate yet, you can still use the DSM-750 in MediaLounge mode to share music, photos, and video files from your Windows Vista Home Basic or XP computer.

Simple to setup with a sleek design that makes it a natural addition to any home entertainment center. The AV connectors on the back panel of the DSM-750 allow for direct connection to your television or home theater system. Use the included remote control to access media content stored on your PC. Browse music files, watch videos, and display photos, all on your television!

USB Direct playback is also available through the DSM-750. The USB connector is located on the front panel, which allows for easy access to music, photos, and videos stored on removable USB flash drives.

The DSM-750 supports the majority of audio, video, and image file formats by using the Windows Media Center. You can stream MP3, WMA, WAV, OGG Vorbis, and AIFF files from your computer and enjoy them on your home stereo system. Watch stored videos in H.264, VC-1, WMV9, MPEG1/2/4, AVI, Xvid, or DVR-MS (recorded TV from Windows Media Center) on your television. Enjoy slideshows of your favorite photos in JPEG, JPEG2000, TIFF, GIF, BMP or PNG formats. Better yet, it's easy to access the files through the television interface using the remote control included with the DSM-750. Dynamic on-screen menus provide for easy to use navigation.

The DSM-750 is capable of playing back High-Definition video files with support for resolutions up to 1080i and includes the latest High-Definition Multimedia Interface (HDMI) connection. Connect the DSM-750 to your television using HDMI and experience the highest quality digital video signal.

# Features

- **Stream media content from a PC or D-Link Network Attached Storage to your entertainment center.**
- **Stream live TV from a Vista® Home Premium/Ultimate PC that has a TV tuner.**
- **Experience Windows Media Center on your TV from your Windows Vista Ultimate or Home Premium PC.**
- **Access Windows Media Center's Online Media, Video, Photo, Music, Internet TV, and more...**
- **Supports WMV9 video files, as well as H.264, VC-1, MPEG 1/2/4, XVID, and AVI.**
- **High-Definition (HD) video files with support for resolution up to 1080i.**
- **Listen to digital music on your stereo system.**
- **View digital photos, slideshows, and videos on TV.**
- **Convenient access to media content stored on a USB drive using the front panel USB connector.**
- **Connect using an Ethernet network cable at up to 100Mbps.**
- **Easily connect to your wireless network using 802.11a/b/g/n.**
- **Dual band 11n wireless works at 2.4GHz, and 5GHz for best possible streaming of HD video.**
- **UPnP AV compliant to support standard Media Server software.**
- **Support for most popular digital media formats.**
- **Remote controlled TV interface for quick access to your media content.**
- **Sleek design complements your existing audio/video equipment.**
- **Optical and coaxial digital audio output.**
- **Component, Composite, S-Video, and HDMI video outputs.**
- **64- or 128-bit WEP security, WPA™ PSK support, and WPA2™ PSK support.**
- **Supports DHCP for easy connection to your home network.**
- **Dynamic on-screen menus and a built-in screensaver.**
- **Time-Shift TV - Rewind and pause while watching live TV.**
- **Record TV up to two weeks in the future.**
- **Easy setup wizard**

# Hardware Overview

## Front Panel



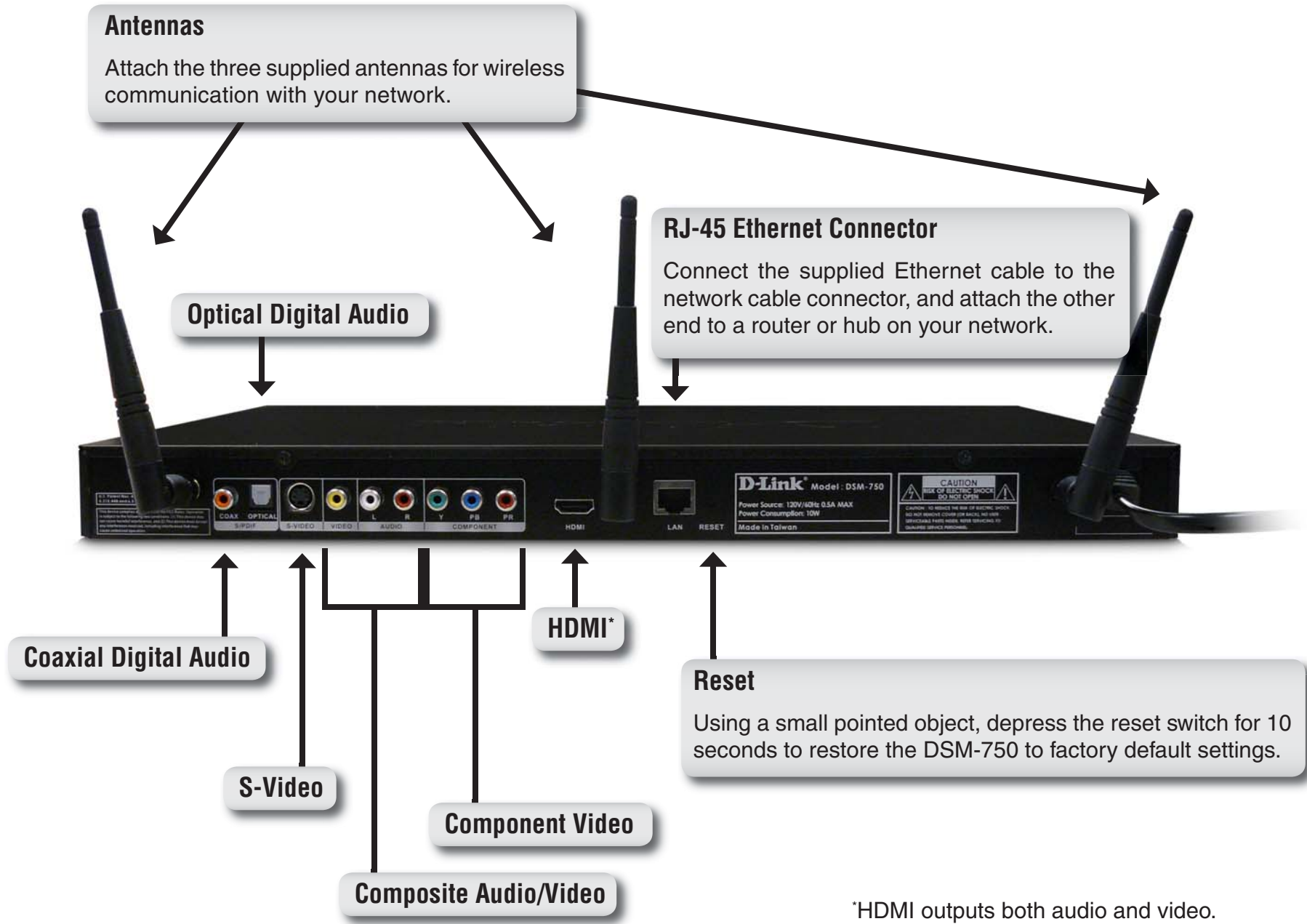
### Power Button

Press the **Power** button on your remote control and the device's power button will illuminate. You may also press the power button located here on the DSM-750 front panel.

### USB Port

Insert a USB thumb drive to view additional videos, music, and photos.

# Back Panel



\*HDMI outputs both audio and video.

# Using the Remote Control



<b>(1) POWER</b>	Turn the DSM-750 ON or OFF.
<b>(2) Player Functions</b>	
▶ <b>Play</b>	Plays music, photo slideshows, videos, live TV & recorded TV.
● <b>Record</b>	Starts recording Live TV in Extender mode.
■ <b>Stop</b>	Stops playing any media file, live TV or recorded TV.
◀◀ <b>Rewind</b>	Rewinds music, video files, live TV and recorded TV.
▶▶ <b>Fast Forward</b>	Fast forwards through music, video files, “timeshifted” live TV and recorded TV.
◀ <b>Skip backward</b>	Selects previous music track or photo. In Extender mode during “timeshifted” live TV and recorded TV, this button rewinds back 10 seconds.
▶ <b>Skip forward</b>	Selects the next music track or photo. In Extender mode during “timeshifted” live TV and recorded TV, this button moves ahead 30 seconds.
⏸ <b>Pause</b>	Pauses music, photo slideshows, videos, live TV & recorded TV.
<b>(3) More Info</b>	Information about the selected media file appears.
<b>(4) Back</b>	Returns to the previously viewed page.
<b>(5) OK / Navigation Arrows</b>	Selects currently highlighted selection and starts playing selected media file.
<b>(6) Windows Media Center</b>	When in MediaLounge mode, this button starts the Media Center Extender mode. Jumps to the Media Center home screen when already in Media Center Extender mode.
<b>(7) Page UP / DOWN</b>	Moves up or down a page in a list of media files.
<b>(8) Channel UP / DOWN</b>	Changes the current Live TV channel being viewed up or down (Extender mode only).
<b>(9) MediaLounge™ Mode</b>	When in Media Center Extender mode, this button starts the MediaLounge mode. Jumps to MediaLounge home screen when already in MediaLounge mode.
<b>(10) Recorded TV</b>	(Works in Extender mode only). Jumps to the <b>Recorded TV</b> page of Windows Media Center.
<b>(11) Options</b>	In MediaLounge mode, displays music, photo, and video shortcuts. In <b>Photos</b> , a photo toolbar is displayed (rotate, zoom, and pan).
<b>(12) Guide</b>	(Works in Extender mode only). Jumps to the television viewing guide.
<b>(13) Live TV</b>	(Works in Extender mode only). Displays the currently selected television channel.
<b>(14) Alphanumeric Keypad</b>	Enter alphanumeric characters (alphabet and numeral characters can be entered).

<b>(15) ENTER</b>	Selects currently highlighted selection. Same as <b>OK</b> button above.
<b>(16) CLEAR</b>	Clears any text that was entered by the On Screen Keyboard or number keys.
<b>(17) SEARCH</b>	(Works in MediaLounge mode only) Jumps to the <b>Search</b> page when in <b>My Media</b> to search for music, photos or videos.
<b>(18) REPEAT</b>	(Works in MediaLounge mode only) Repeats playback of a single selected music track or multiple music tracks.
<b>(19) AUDIO TRACK</b>	(Works in MediaLounge mode only) Toggles between audio tracks in a supported video file with multiple tracks.
<b>(20) SHUFFLE</b>	(Works in MediaLounge mode only) Shuffles the playback order of music tracks in a folder or playlist.
<b>(21) Teletext Mode</b>	Toggles between supporting the 4 color-coded Teletext buttons for Europe and MediaLounge mode buttons below the Teletext button.

**Note:** *The DSM-750 remote control does not have volume control buttons, nor does it have a mute button. It is recommended that you use your audio device's remote control to control the volume.*

# Connecting the DSM-750

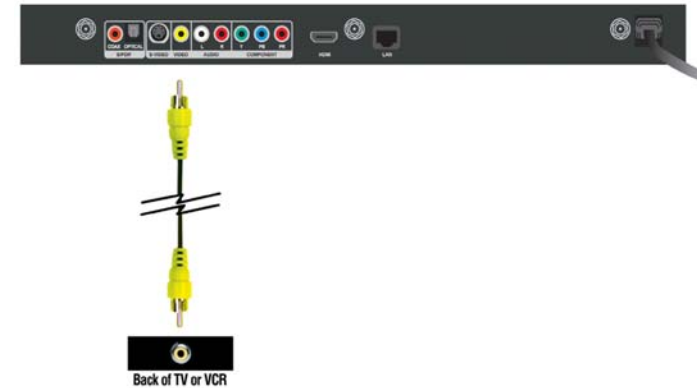
All audio, video, and networking connections are located on the rear panel of the DSM-750.

## Video Connections

Select one of four ways to connect video to your DSM-750:

- **Composite Video Connector**

Plug the **supplied** yellow video cable into the VIDEO connector on the DSM-750 and the matching opposite end of the cable to your television input.



- **S-Video Connector**

Plug the S-Video cable into the S-VIDEO connector on the DSM-750 and the opposite end into the S-Video connector on your television.

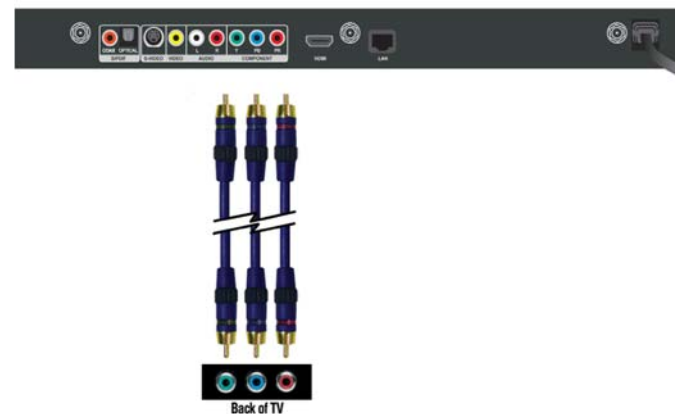
**Note:** This cable is not supplied.



### Component Video Connectors

- Match the color coded cables to the matching COMPONENT connectors on the DSM-750 and the opposite end into the component video input of your television. This connection supports HD video resolution up to 1080i.

**Note:** This cable is not supplied.



### HDMI

- Plug the HDMI cable into the HDMI connector on the back panel of the DSM-750.

Plug the opposite end to the matching HDMI connector on your television or audio/video system. HDMI provides the best video quality resolution up to 1080i, plus audio support.

High-Definition Multimedia Interface (HDMI) supports standard, enhanced, or high-definition video, plus digital audio on a single cable.

**Note:** This cable is not supplied.





## Audio Connections

Select one of three ways to connect audio to your DSM-750:

- **Composite Audio**  
Plug the **supplied** red and white connectors into the AUDIO (color-coded matching) connectors on the DSM-750.  
Plug the opposite ends to the matching connectors on your television or audio/video system.



- **Optical Digital Audio**  
Connect an optical audio connector into the OPTICAL connector on the DSM-750 and the matching opposite end of the cable to the audio input of your audio system.

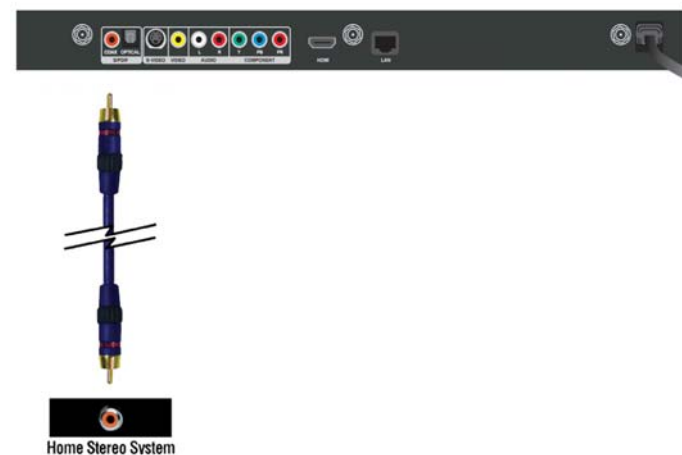
**Note:** This cable is not supplied.



- Coaxial Digital Audio**

Connect a coaxial digital audio connector into the COAX connector on the DSM-750 and the matching opposite end of the cable to the audio input of your audio system.

**Note:** *This cable is not supplied.*



## Network Connections

Select one of two ways to connect your DSM-750 to your network:

- **RJ-45 Ethernet Connector**  
Connect the supplied Ethernet cable to the network cable connector, and attach the other end to a router or hub on your network.



- **Wireless Antennas**  
Attach the supplied three antennas by threading them onto the “gold” antenna connectors located on the back of the DSM-750. Be sure the antennas are secure and in an upright position.



**Note:** If you place the DSM-750 in an enclosed area (e.g. an entertainment center) you may need to obtain an extension antenna to provide an optimal wireless signal.

# Setup

If you have Windows Vista® Ultimate, Home Premium or later, and want to use your DSM-750 as a Media Center Extender, you will need to get the Media Center Extender Update for the Windows Vista PC by either:

- Using Windows Update from your Windows Vista PC.

or

- Insert the setup CD into your PC's CD-ROM drive and click on the **Install Media Center Extender Update** option on the setup CD.

Click **Install Media Center Extender Update**

**Note:** Insert the setup CD into your PC's CD-ROM drive to access the DSM-750 Manual and Quick Setup Guide.



# Wired Setup

**Note:** If you choose to connect to a wireless network, please skip to the **Wireless Setup** section on page 26.

For the quickest and easiest installation, it is **highly** recommended that DHCP is enabled. Most networks have DHCP enabled to allow new devices on the network to connect automatically.

Make sure the DSM-750 is properly connected to your router with the supplied Ethernet cable.

After plugging in the Ethernet cable, plug the end of the DSM-750 power supply cord into a power outlet. Position your media player so that you can see it from where you view your TV. Power on the DSM-750 by pressing the **Power** button on the included DSM-750 remote control.

**Note:** Make sure your media player is not behind the TV so you can use your DSM-750 remote control.

Using the TV's remote control, turn on your TV and select the correct audio/video input source. When the correct audio/video input source is selected, you will see the MediaLounge™ startup screen or **Optional Set Up** screen.

**Note:** If you don't remember how to change TV inputs, refer to the TV User Manual for instructions.



## Media Center Extender Optional Set Up

If you are **NOT** using your DSM-750 as a Media Center Extender, click **Cancel**. If you have Windows Vista® Home Premium or Ultimate, and you want to set up the Extender, skip to the following page. Setting up the DSM-750 as a Media Center Extender allows a Windows Vista Home Premium or Ultimate based PC to share the Media Center experience on your TV. If you only have Windows Vista Home Basic or XP, you will only have access to the MediaLounge™ mode.



Click **Cancel**

After clicking **Cancel**, click **Finish**. DHCP (Dynamic Host Configuration Protocol) allows network settings required by the DSM-750 to be set automatically. If DHCP is enabled on your network, your wired setup is complete and the DSM-750 MediaLounge home screen will appear. Please skip to page 38.

**Note:** DHCP allows devices to be added to the network with minimal or no manual configuration.



Click **Finish**

If you **ARE** using your DSM-750 as a Media Center Extender, click **Next**.



Click **Next**

On the following screen, click **Next** again to continue.

**Note:** You can also setup your DSM-750 as a Media Center Extender at a later time.

**Note:** If DHCP is enabled, please skip to the “**8-Digit Setup Key**” section on page 37. If DHCP is **NOT** enabled, please continue to the “**Configure Your Network Settings Manually**” section on the following page. DHCP (Dynamic Host Configuration Protocol) allows network settings required by the DSM-750 to be set automatically.



Click **Next**

## Configure Your Network Settings Manually

Use your remote control number keypad, or select the numbers from the on screen number pad, to enter your wired network's IP address.

Once you have entered your IP address, use your remote control to navigate to the **Next** option and press **OK**.



Click **Next**

Use your remote control number keypad, or select the numbers from the on screen number pad, to enter your wired network's Subnet mask.

Once you have entered your Subnet mask, use your remote control to navigate to the **Next** option and press **OK**.



Click **Next**



Use your remote control number keypad, or select the numbers from the on screen number pad, to enter your wired network's Internet gateway.

Once you have entered your Internet gateway, use your remote control to navigate to the **Next** option and press **OK**.



Click **Next**



Use your remote control number keypad, or select the numbers from the on screen number pad, to enter your wired network's DNS server.

Once you have entered your DNS server, use your remote control to navigate to the **Next** option and press **Enter**.

Please wait while the DSM-750 connects to your network. After connecting successfully to the DSM-750, please skip to the “**8-Digit Setup Key**” section on page 37.

**Note:** *If you are unable to connect to your network, please check your network connections or contact your network administrator.*



Click **Next**



## Wireless Setup

Make sure the supplied three antennas are properly attached onto the “gold” antenna connectors located on the back of the DSM-750, and that the antennas are secure and in an upright position.

For the quickest and easiest installation, it is **highly** recommended that DHCP and SSID broadcast are enabled. Most networks have DHCP and SSID broadcast enabled to allow new devices to find the wireless network and connect automatically.

After you’ve connected the antennas, plug the end of the DSM-750 power supply cord into a power outlet. Position your media player so that you can see it from where you view your TV. Power on the DSM-750 by pressing the **Power** button on the included DSM-750 remote control.

**Note:** Make sure your media player is not behind the TV so you can use your DSM-750 remote control.

Using the TV’s remote control, turn on your TV and select the correct audio/video input source. When the correct audio/video input source is selected, you will see the MediaLounge™ startup screen or **Optional Set Up** screen.

**Note:** If you don’t remember how to change TV inputs, refer to the TV User Manual for instructions.



## Media Center Extender Optional Set Up

If you are **NOT** using your DSM-750 as a Media Center Extender, click **Cancel**. If you have Windows Vista® Home Premium or Ultimate, and you want to set up the Extender, skip to the following page. Setting up the DSM-750 as a Media Center Extender allows a Windows Vista Home Premium or Ultimate based PC to share the Media Center experience on your TV. If you only have Windows Vista Home Basic or XP, you will only have access to the MediaLounge™ mode.



Click **Cancel**

After clicking **Cancel**, click **Finish**. DHCP (Dynamic Host Configuration Protocol) allows network settings required by the DSM-750 to be set automatically. If DHCP is enabled on your network, the **Setup Wizard** screen will appear. Please skip to page 29 to continue with the **Setup Wizard**.

**Note:** DHCP (Dynamic Host Configuration Protocol) allows network settings required by the DSM-750 to be set automatically.



Click **Finish**

If you **ARE** using your DSM-750 as a Media Center Extender, click **Next**.



Click **Next**

On the following screen, click **Next** again to continue.

**Note:** You can also setup your DSM-750 as a Media Center Extender at a later time.

**Note:** If DHCP is **NOT** enabled, you will have to enter your network settings manually to complete the **Setup Wizard**. DHCP (Dynamic Host Configuration Protocol) allows network settings required by the DSM-750 to be set automatically.

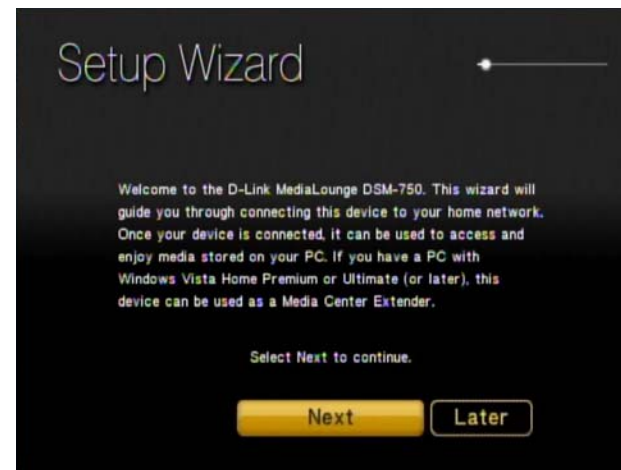


Click **Next**

## Setup Wizard

Follow the on screen instructions to continue with the wireless network setup.

Click **Next** to begin the Wireless Setup Wizard.



Click **Next**



Please wait while the DSM-750 searches for available wireless networks.

**Note:** If your router's SSID broadcast is turned off, please use your remote control to select **Manual Setup**. If you clicked **Manual Setup**, please continue to the following page. If you did not click **Manual Setup**, please skip to page 31.



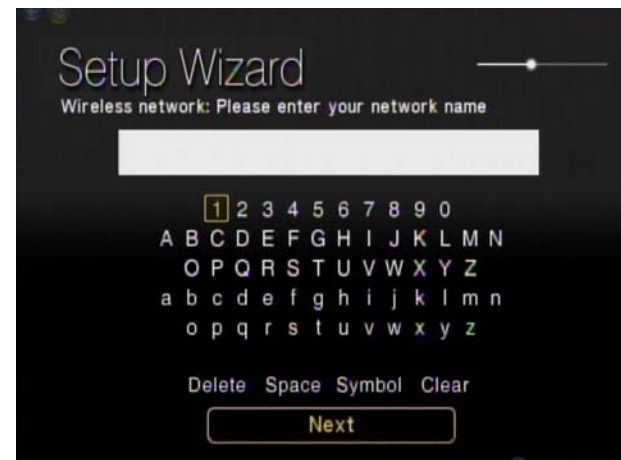
## Manual Setup

**Note:** This page can be skipped by most users if SSID broadcast is enabled.

By using the remote control's alphanumeric keypad, or the On Screen Keyboard, you may enter your wireless network's name. When you have completed entering the network name, use the down arrow to select **Next**.

**Note:** If your wireless network is not found, refer to the “**Wireless Installation Considerations and Troubleshooting**” section starting on page 95 for information as to why this may have happened.

Click **Next**



By using your remote control, navigate through the encryption type list by either pressing the up or down arrow. Once you find your network's encryption type, use your remote control to click it. Please continue to the “**Encryption**” section on the following page.



Select your wireless network from the list of networks that appear.

**Note:** If you do not see your wireless network, refer to the “**Wireless Installation Considerations and Troubleshooting**” section starting on page 95 for information as to why this may have happened.



## Encryption

If your wireless home network is using wireless encryption, you will need to provide the DSM-750 with the network security passphrase. By using the On Screen Keyboard, you may enter the network security passphrase.



When you have completed entering the network security passphrase, use the down arrow to select **Next**.

**Note:** This passphrase must **exactly** match the network security passphrase, consult your network administrator for more information.



Click **Next**



If DHCP is enabled on your network, select **Auto (Recommended)**. If DHCP is not enabled on your network, select **Advanced Setup** to enter the wireless network settings manually.

**Note:** If you selected **Advanced Setup**, please skip to “**Configure Your Network Settings Manually**” on the following page. If you selected **Auto (Recommended)**, please skip to the “**Completing the Setup Wizard**” section on page 35.





## Configure Your Network Settings Manually

**Note:** Skip this section if DHCP is enabled on your network.

Use your remote control number keypad, or select the numbers from the on screen number pad, to enter your wireless network's IP address.

Once you have entered your IP address, use your remote control to navigate to the **Next** option and press **Enter**.



Click **Next**



Use your remote control number keypad, or select the numbers from the on screen number pad, to enter your wireless network's Subnet mask.

Once you have entered your Subnet mask, use your remote control to navigate to the **Next** option and press **Enter**.



Click **Next**



Use your remote control number keypad, or select the numbers from the on screen number pad, to enter your wireless network's Internet gateway.

Once you have entered your Internet gateway, use your remote control to navigate to the **Next** option and press **Enter**.



Click **Next**



Use your remote control number keypad, or select the numbers from the on screen number pad, to enter your wireless network's DNS server.

Once you have entered your DNS server, use your remote control to navigate to the **Next** option and press **Enter**.

Please wait while the DSM-750 connects to your network.

**Note:** If you are unable to connect to your network, please contact your network administrator.



Click **Next**



## Completing the Setup Wizard

Connecting to the wireless network may take up to a minute.



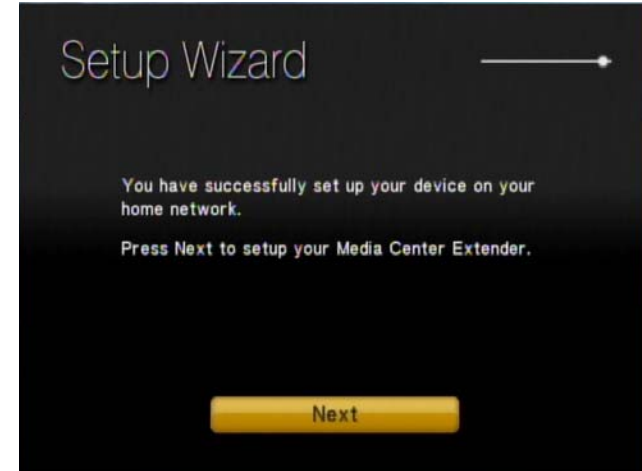
The “You have successfully set up your device on your home network” message should appear.

If you chose **NOT** to setup the DSM-750 as a Windows Media Center Extender, click **Finish**. Your wireless setup is complete and the DSM-750 MediaLounge™ home screen will appear. Please skip to page 38.

**Note:** If you did not receive the “successful” message mentioned here, please refer to the “**Wireless Installation Considerations and Troubleshooting**” section starting on page 95. for more information.



If you **ARE** using the DSM-750 as a Media Center Extender, click **Next** to continue.



Click **Next**



On the **Extender Setup** screen, click **Next** again.

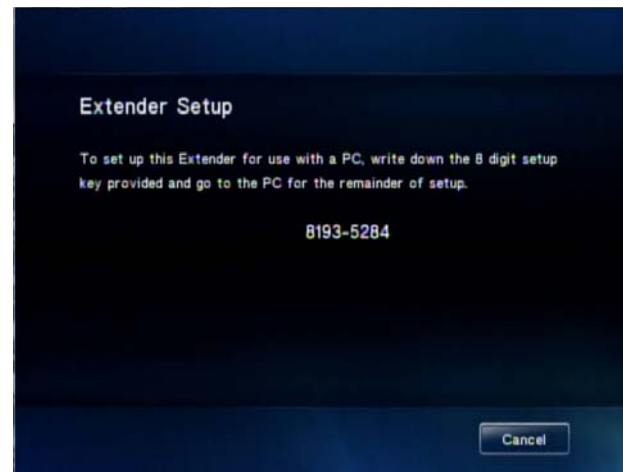


Click **Next**



## 8-Digit Setup Key

An 8-digit Setup Key will appear on the TV. Please write down or remember this 8-digit Setup Key and then go to your PC to finish the setup.

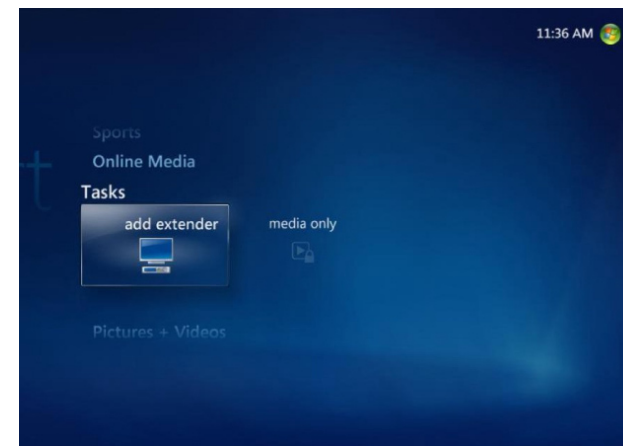


## Complete Extender Setup

While at your PC, click **Start** and select **Windows Media Center**. Select **Tasks** by scrolling down the menu. Once you are in **Tasks**, scroll right and click on **Add Extender**.

Follow the on screen instructions to enter the 8-digit Setup Key and to configure Windows® Media Center for your DSM-750.

Congratulations, your Extender setup is complete.



# Windows® Media Player 11 Setup

To get the most out of the DSM-750 Media Center Extender, and to enjoy the Windows Media Center experience on your TV by using the DSM-750, a PC with Windows Vista Home Premium or Ultimate is required. If you are not yet ready to experience Windows Media Center from your DSM-750, you can still view photos or videos, or listen to music, from a Windows Vista Basic or Windows XP computer.

To share audio, video, and photo files from your computer, it is necessary to have Windows Media Player 11 or another UPnP™ AV media server software on the PC. Windows Media Player 11 software allows you to share your PC's audio, video, and photo files with your media player. Windows® Media Player 11 software then streams the content to your DSM-750 via your wired/wireless network connection.

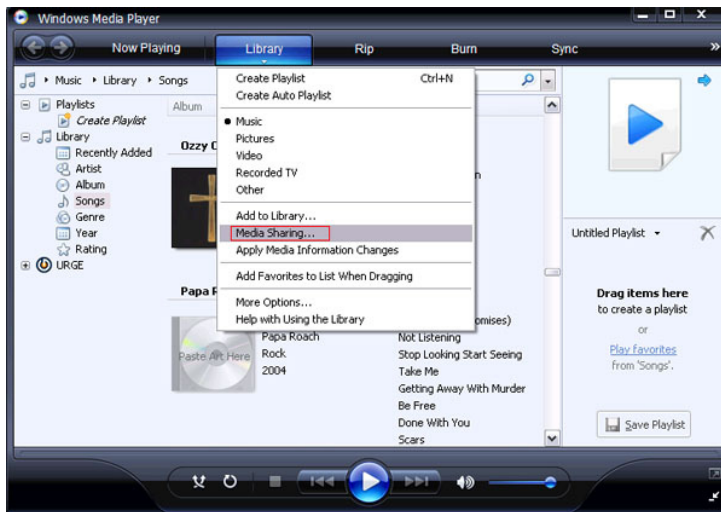
If more than one PC contains files you want to share, you can select one of the following options:

1. Copy all of the files to one computer designated to run the Windows Media Player 11 software.
2. Map network drives on the computer with the Windows Media Player 11 software to additional computers that contain files you want to share. This method also allows you to share files from computers that cannot run the Windows Media Player 11 software such as Macintosh systems. The computer running the Windows Media Player 11 software must always be on when streaming content from any computer.

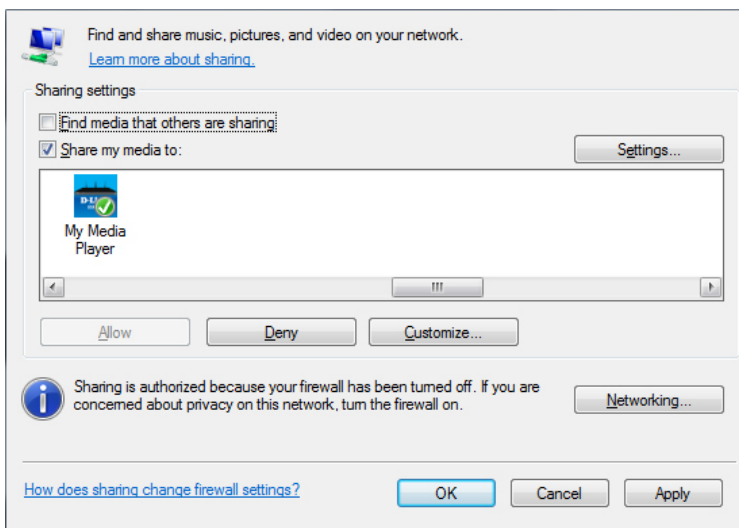
**Note:** *In order to share files from your MAC to your PC you must turn on Windows sharing from Preferences Menu and select Sharing.*

3. Configure the Windows Media Player 11 software on each computer.
4. All versions of Windows Vista include Windows Media Player 11. Windows XP offers Windows Media Player 11 as a free update from Windows Update, or you can download Windows Media Player 11 by visiting [microsoft.com](http://microsoft.com).

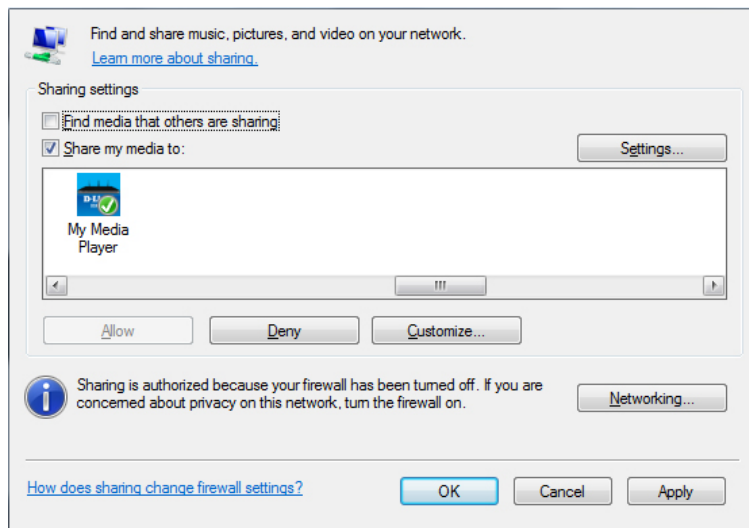
In order to share media to your DSM-750 using Windows® Media Player 11, you must first allow your media player access in the software. Click the down arrow under **Library** and select **Media Sharing**.



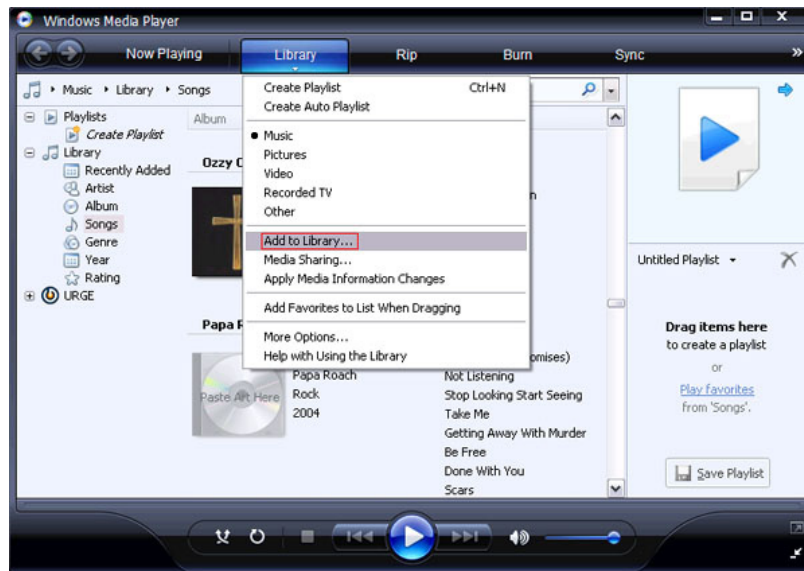
Click the **Share my media to:** check box. Select your **D-Link DSM-750** media player from the *Media Sharing* box and then click the **Allow** button.



Your device will now have a green check mark. Click **Apply** and then click **OK**.

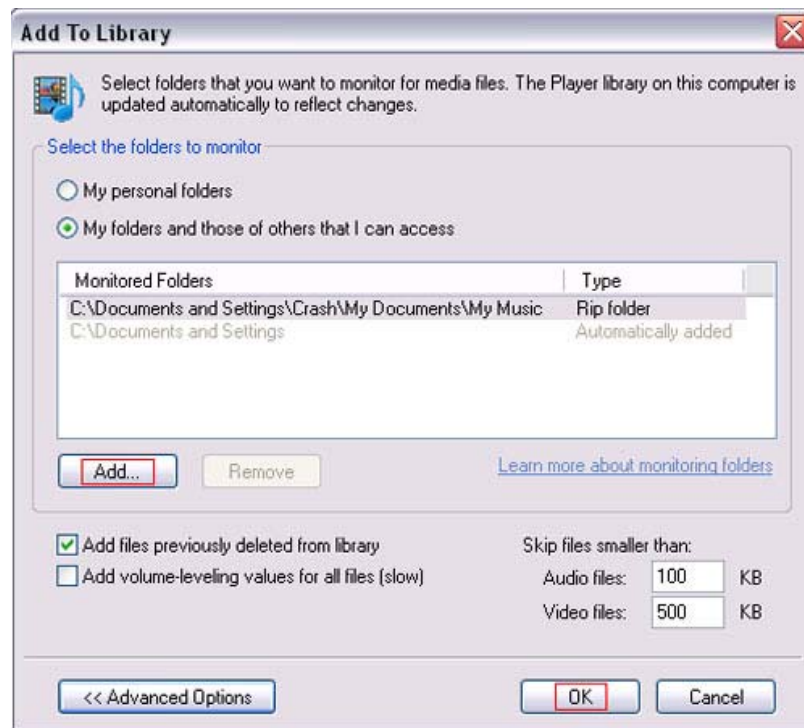


Now you need to add the folders containing media you want shared with your DSM-750. Click on **Library** and then click on **Add to Library**.

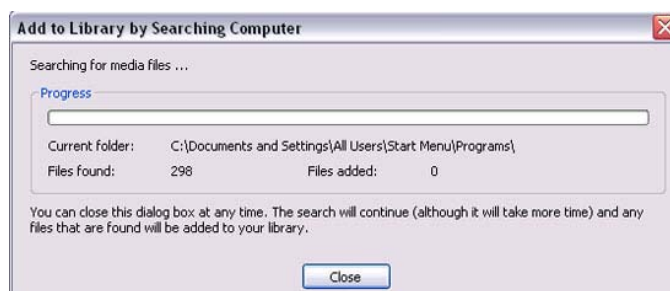




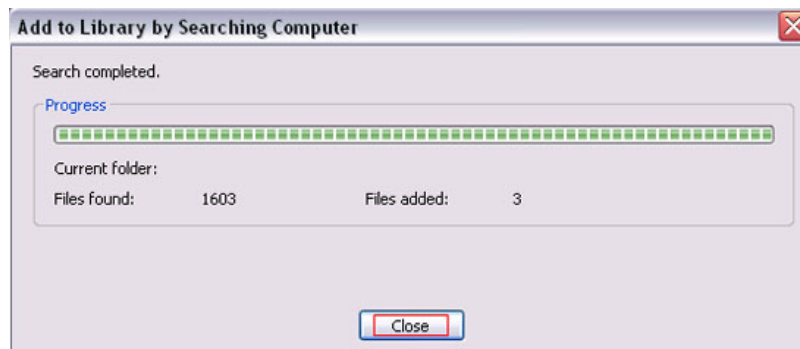
Click the **Advanced Options** button in the bottom left-hand corner. Click **Add** and choose the folders with media you wish to be shared. If you have folders in other areas of your hard drive or on other drives in your PC or network, you will need to select the **Add** button and select each folder manually. Once you have added the folder(s) you want to share click **OK**.



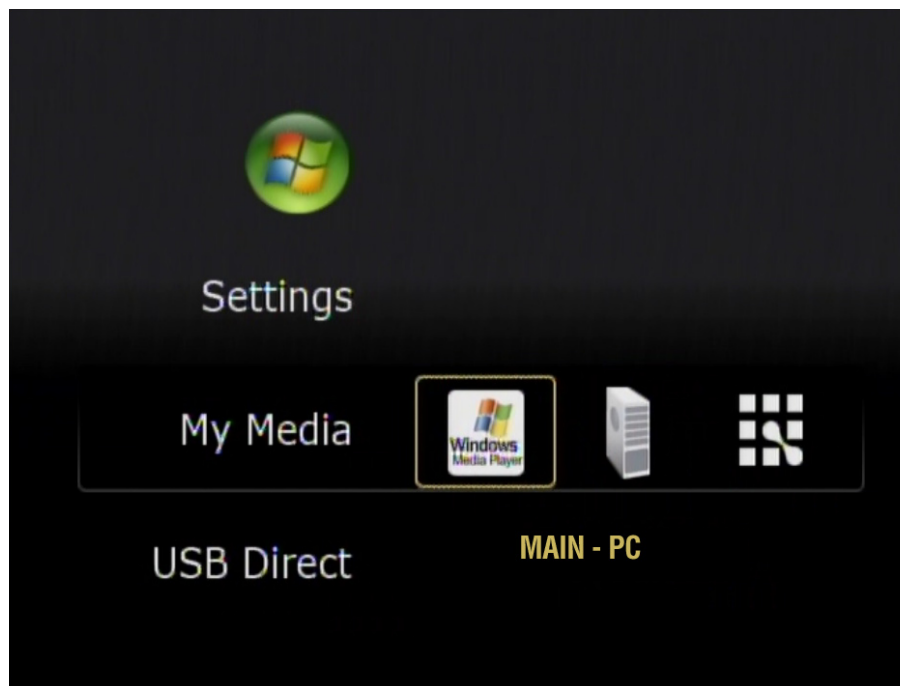
Windows® Media Player 11 will now search for supported media files in the folders you selected to share.



Click **Close** and you are ready to use Windows® Media Player 11 as your server.



You can now return to your TV and select the Windows Media Server from **My Media** on the DSM-750 Home Page.

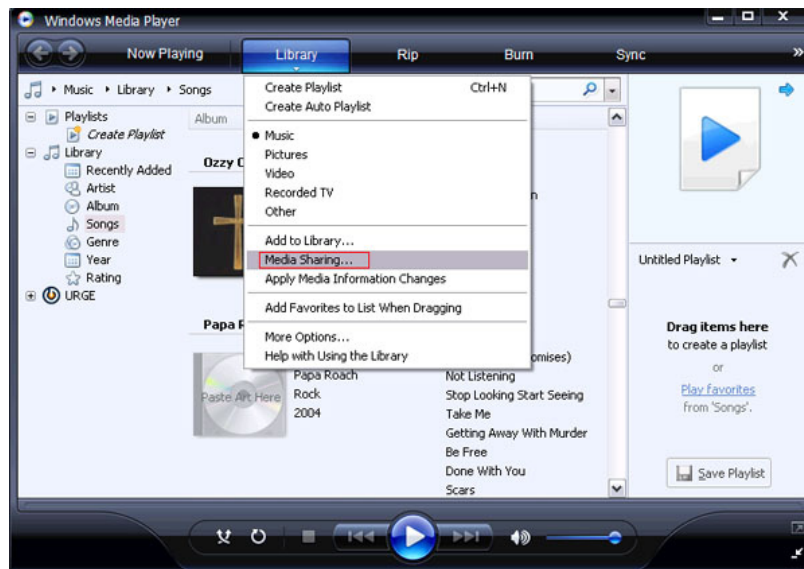


Once you have confirmed that your Windows® Media Player sharing has been enabled and is showing on your D-Link DSM-750 you can select your Music, Photos or Videos after selecting the Windows Media Player 11 media server.

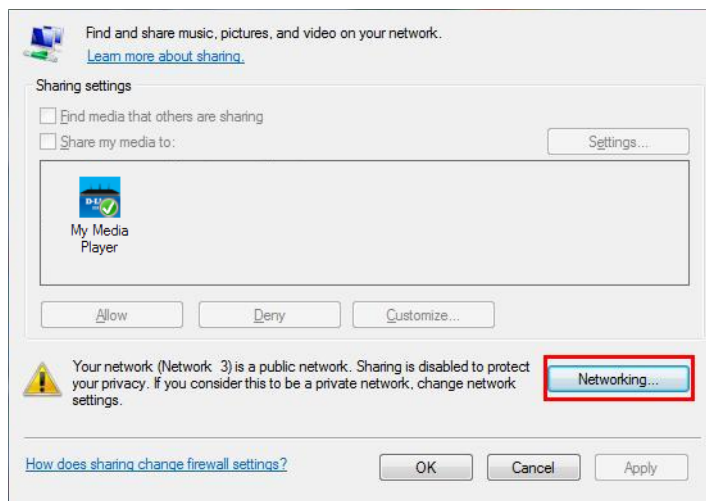


If you are using Windows Vista® and Media Sharing is disabled, follow these steps to enable media sharing:

Open Windows Media Player 11. Click the down arrow under **Library** and select **Media Sharing**.



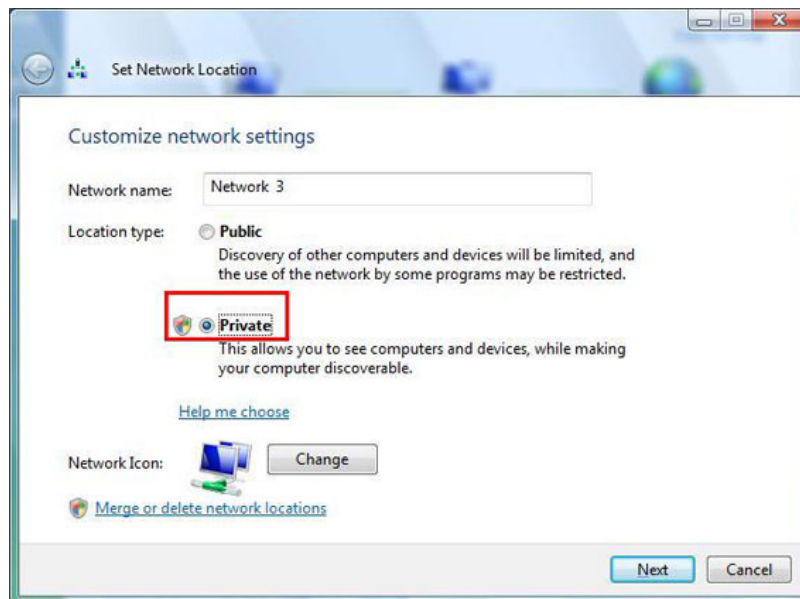
Click the **Networking** button.



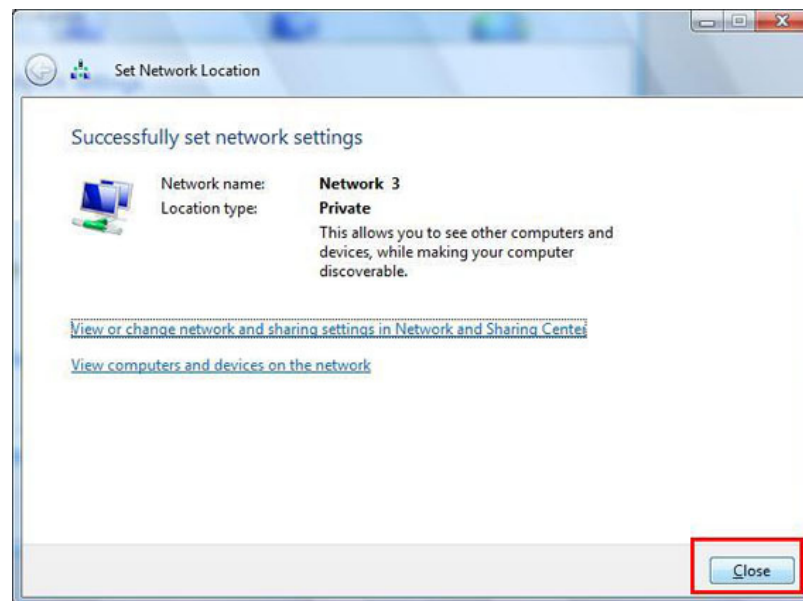
Click the **Customize** button.



Select **Private** under *Location Type*. Click the **Next** button.



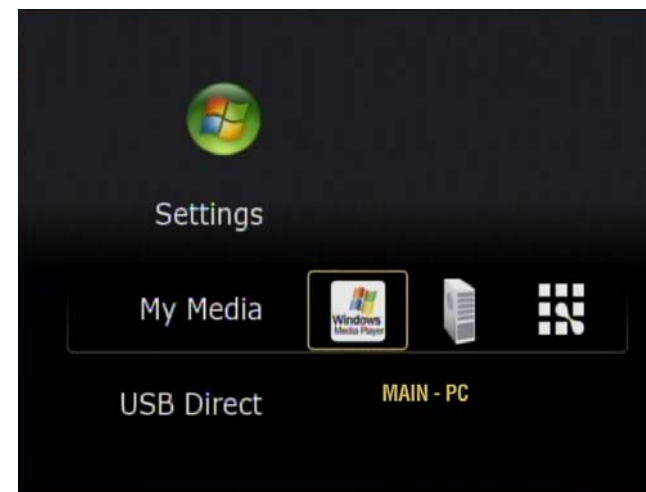
Click the **Close** button. Media sharing should now be accessible from your Windows Vista® PC.



# Using Your DSM-750 MediaLounge™ Home Page

The MediaLounge Home Page will appear after you have successfully configured your DSM-750 with your network. The following options are available:

- **My Media**
- **USB Direct**
- **Windows Media Center** (Operational only if the DSM-750 is setup as an Extender)
- **Settings**

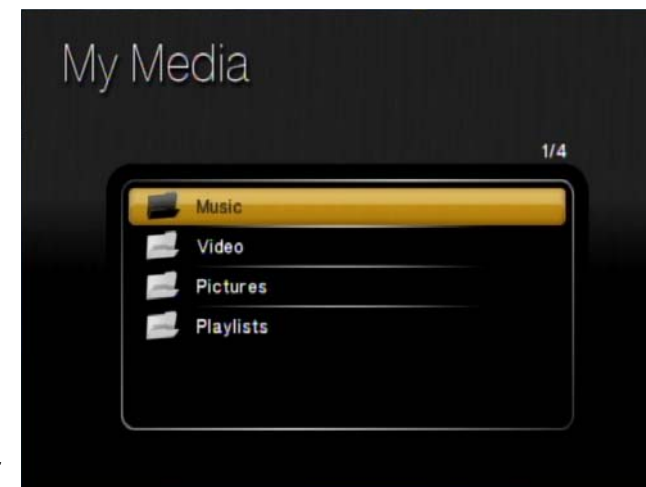


## My Media

The folder names and their order that are displayed in the My Media menu are dependant on the media server you are connected to. The following folders may appear:

- **Video**
- **Music**
- **Photo**
- **Playlists**

**Note:** The menu interface is initially setup to display in **Thumbnail** mode, but you may find it easier to navigate through the menus in **List** mode. To change this setting to **List** mode, access the **Settings** menu and select **Browse Display**. Please see page 86 for more information.



## Video

The following video file formats are supported:

- **MPEG-1**
- **MPEG-2**
- **MPEG-4** (ASP - Advanced Simple Profile)
- **AVI** (MPEG4 layer only, does not support uncompressed AVI, Resolution up to 1080i)
- **XVID** (with MP3 and PCM)
- **WMV9** (Resolution up to 1080i)
- **DVR-MS** (Record TV from Windows Media Center)
- **H.264** (MPEG-4 Part 10)





## Viewing a Video

Once you enter the Video menu, you will see a list of video folders and/or video files.

Use the **Navigation Arrows** on your DSM-750 remote control to navigate to the video file you wish to view. Once you have made your choice, highlight the video and press **OK**, or press **Play** to view the video. If your video is located within a folder, highlight the folder and press **OK**. Then highlight the video and press **OK** again, or press **Play** to view the video.



**Play** - To play video.



**Stop** - Stops the video.



**Pause** - To pause video.



**Skip Forward** - Skips forward 30 seconds of a video. Only for compatible types of video.



**Fast Forward** - To fast forward through the video. Press this button several times to change the speed.



**Skip Backward** - Skips through 10 seconds of the video in reverse.



**Rewind** - To rewind through the video. Press this button several times to change the speed.

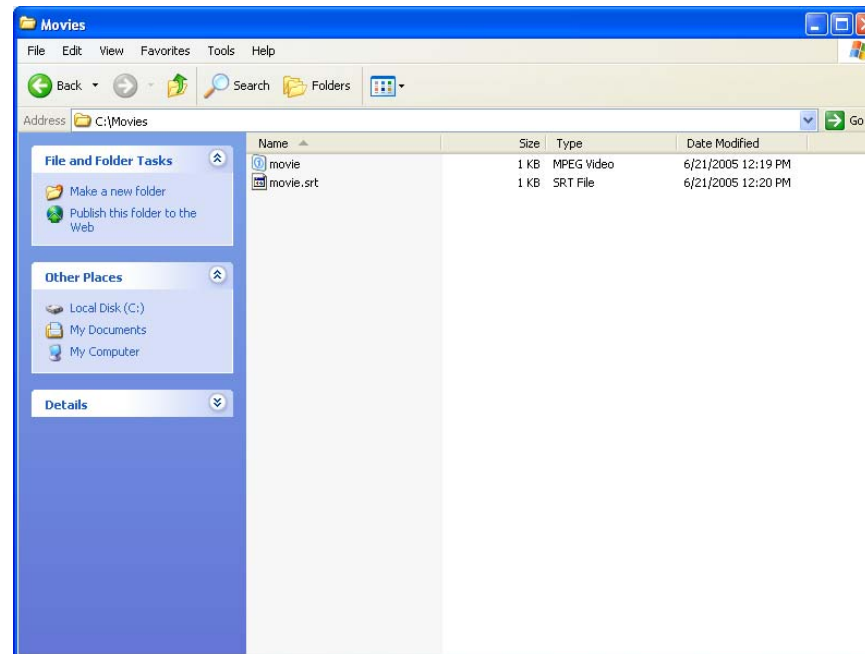
**Note:** *REPEAT* and *SHUFFLE* only work while listening to music.

## Audio Track Button

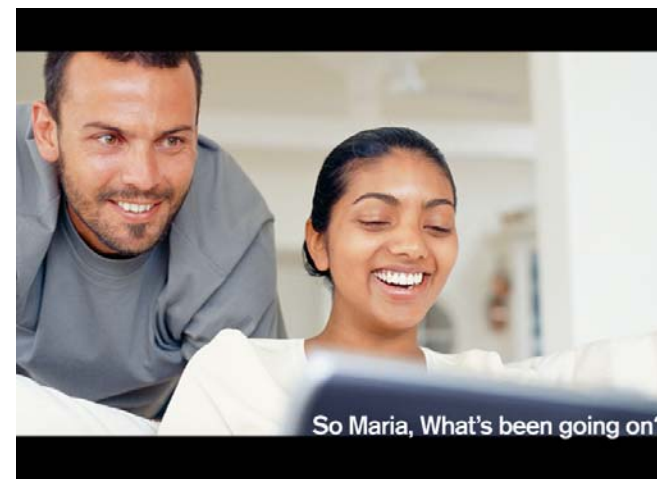
The **Audio Track** button on your remote control allows you to toggle through multiple language tracks in a video that contains multiple audio tracks.

## Subtitles

Your media player supports the display of the SRT subtitle file format. To use it, make sure that it is in the same folder as your movie file and that they are both named exactly the same.



Simply start the video file and the subtitles will show at the bottom of the screen.



**Note:** Tools to generate SRT files can be found online.

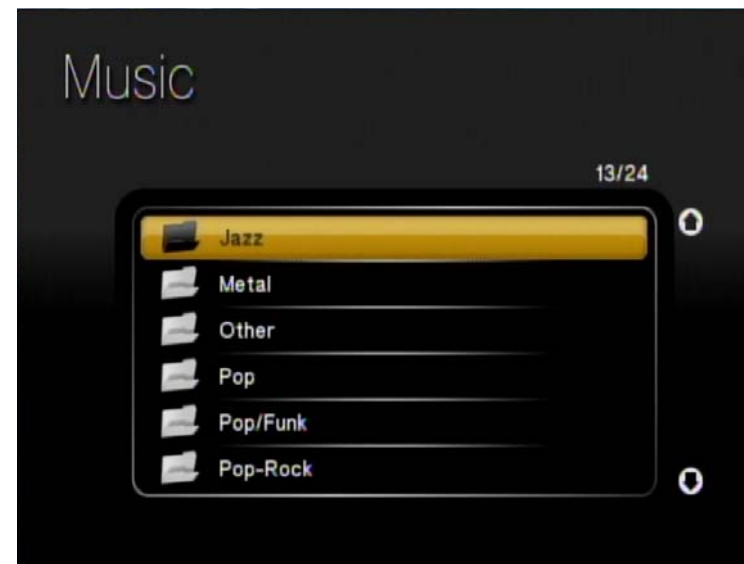
## Music

Your music listening experience on the media player depends upon the quality of your digital music files on your PC. Avoid quality settings below 48kbps as they are unsupported. For CD quality music, rip your MP3s at 128kbps or higher, with a sample rate of 44.1kHz.

The following music file formats are supported:

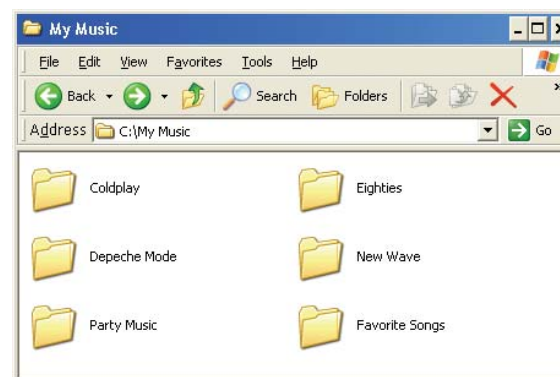
- **MP3** (up to 320 kbps)  
MPEG-1, Layer 3 Audio file -The standard Internet music file format. This is the most commonly used audio format.
- **WMA** (Does not support WMA lossless)  
Windows Media Audio file - Supported by the Microsoft Windows Media player and some music jukebox programs. Also supports WMDRM protected WMA files when using Windows Media Player 11.
- **WAV**  
WAV was developed by Microsoft and IBM. WAV sound files end in .wav and are compatible with Windows applications supporting audio.
- **AIFF** (AIFF files must be encoded in PCM format only.) AIFF (Audio Interchange File Format) was developed by Apple Computers and is the standard audio format for Macintosh computers. File extensions are .AIF or .IEF.
- **MPEG 1** and **MPEG 2**  
Moving Pictures Experts Group created standards for compressing audio and video. Audio uses the file extension .mp3.
- **OGG Vorbis**  
Open source audio format. Uses the file extension .ogg.

**Note:** You are able to play music while viewing a slideshow.



## Organizing Music Files

Music files are located on your PC, or on a compatible Network Attached Storage (NAS) drive. They can be contained in one directory folder, or organized in several subfolders.



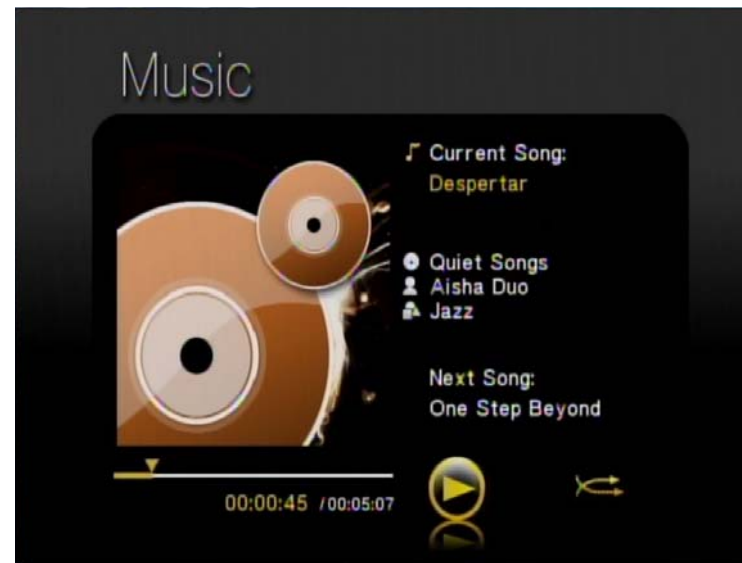
The DSM-750 displays your music files by genres, artists, albums, and tracks. This information is obtained from the ID3 tags in each of your music files. The ID3 tag is created for you when you rip (copy) your music from your CD. However, if your music files have incorrect or incomplete tags, the tracks may not appear where they should in your music categories. The exact order in which your folders and files appear on the DSM-750, are controlled by the media server software.

## Listening to Music

Once you enter the **Music** menu, you will see a list of your music folders.

Use the **Navigation Arrows** on your DSM-750 remote control to navigate to the music file you wish to listen to. Once you have made your choice, highlight the music file and press **OK**, or press **Play**. The DSM-750 music player will appear and your song selection will begin.

**Note:** The album art will only display if the song you downloaded or ripped from your CD is from an actual album. The album art is downloaded from an online media library.



**Play** - To play music.



**Stop** - Stops the music.



**Pause** - To pause music.



**Record** - Starts recording Live TV in Extender mode.



**Fast Forward** - To fast forward through the music.



**Skip Forward** - Skips through the music at certain points.



**Rewind** - To rewind through the music.



**Skip Backward** - Skips through the music in reverse at certain points.

**SHUFFLE** - This option is only available while in MediaLounge™ mode.

**REPEAT** - This option is only available while in MediaLounge mode.

**Note:** **REPEAT** and **SHUFFLE** only work for music. These buttons are not supported for video or photos.

## Browsing for Music

There are many ways to browse for a music track. For example, let's use the following music file located in the default music folder. (...\\Beethoven\\Ode to joy.mp3)

*Ode to joy.mp3*

*Artist: Ludwig van Beethoven*

*Album: Beethoven*

*Genre: Classical*

*To browse for this track in the track list:*

1. Select **All Tracks**
2. Highlight **Ode to joy**

*To browse by artist:*

1. Select **Artists**
2. Select **Ludwig van Beethoven**
3. Select **Beethoven**
4. Highlight **Ode to joy**

*To browse by album:*

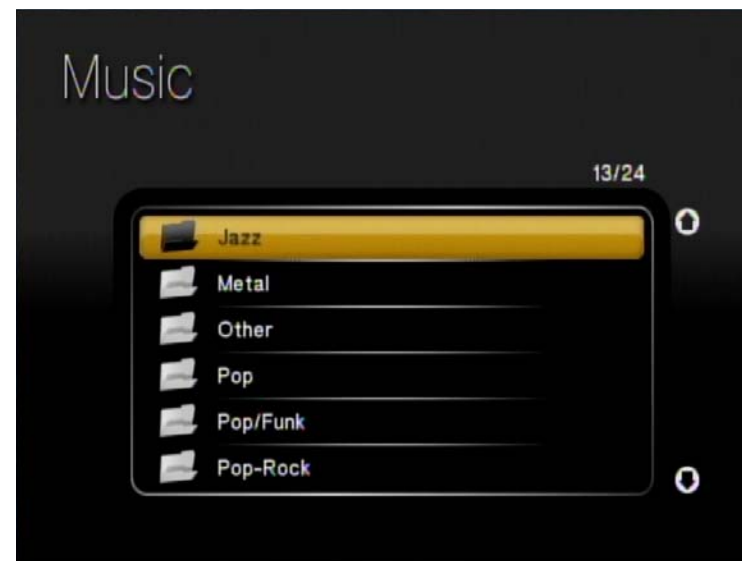
1. Select **Albums**
2. Select **Beethoven**
3. Highlight **Ode to joy**

*To browse by genre:*

1. Select **Genres**
2. Select **Classical**
3. Select **Ludwig van Beethoven**
4. Select **Beethoven**
5. Highlight **Ode to joy**

*To browse by folder:*

1. Select **Folders**
2. Select **My Music**
3. Select **Beethoven**
4. Select **Ode to joy**



**Note:** see the **SEARCH** function on page 59 for additional search options.

# Photo

The following photo file formats are supported:

- **BMP** (non-compressed)  
Windows bitmap file. Widely used in Microsoft Windows for pictures and backgrounds.
- **JPEG** (grayscale, RGB, YCbCy)  
(Does not support CMYK, YCCK.)  
The JPEG format is the Internet and digital photo format standard used by most digital cameras.
- **GIF**  
(Animated GIF's are not supported)  
Older format still widely available on the internet for photos, web pages, and clip art.
- **PNG** (Non-alpha channel only)  
Portable Network Graphics standard created in response to limitations in the GIF file format.
- **TIFF** (RGB)  
(Does not support CMYK, YMC, YMCK, KCMY)  
Tagged Image File Format is a raster file format.
- **JPEG2000**  
JPEG2000 is a new image format based on the latest compression technology.

**Note:** You are able to play music while viewing a slideshow.



## Organizing Photo Albums

Unlike music files, photos contain little information about their content. Therefore, photos are organized by their filename and by the folder they are in. Many digital cameras will organize your photos into folders when you connect and unload them to your PC. Each time you dock or connect, a new folder is created using the current date and time, and all photos are copied into that folder.

To simplify browsing on your DSM-750, you can create folders on your PC. For instance, create a folder in the My Pictures directory called **Vacation** and copy all of your vacation photos into it. Your DSM-750 will show the **Vacation** folder. To play a slideshow of the folder, highlight it and press the **Play** button. To view a list of photos in the folder, highlight it and press the **right arrow** button.

You can give your photos meaningful names by renaming the files on the PC. Most digital cameras number photos sequentially. For example, rename the photo **IM001125.jpg** to **sunset.jpg** on your PC. The photo will be displayed as **sunset.jpg** on your DSM-750\*.

You can create as many folders as you need. Create a folder for the year, then create folders inside for each of the months, and then folders in each month for special occasions (birthday, vacation, holidays, etc...).

*\*Folder creation and renaming files must be done on the PC via standard Windows® procedures.*



## Viewing a Photo

Once you enter the **Photo** menu, you will see a list of folders and pictures.

Use the **Navigation Arrows** on your DSM-750 remote control to navigate to the photo file you wish to view. Once you have made your choice, highlight the photo file and press **OK**.

When viewing a photo you can change the on-screen appearance by applying rotate, pan, and zoom effects. These on-screen effects are only for enhancing the on-screen view and are not saved to the actual file. To access the photo viewing effects, press the **Options** button on the remote control while viewing the photo that you want to manipulate. To select an effect, highlight the effect using the **Navigation Arrows** on the remote control and press **OK** to select the effect.



Press the **Options** button on your DSM-750 remote control to access the options menu while viewing a photo. Press the **Options** button again to exit the options menu.



Rotate the photo 90° clockwise

Rotate the photo 90° counter-clockwise

Rotate the photo 180° clockwise

Zoom in on the photo

Pan the Photo

## Viewing a Slideshow

Once you enter the **Photo** menu, you will see a list of folders and pictures.

To start playing a photo slideshow, highlight a folder and press the **Play** button. The first photo will be displayed and then followed by the next photo in the folder. All photos in the folder will be displayed.

Please continue to the **Slideshow** section on page 83 to setup your slideshow settings. The **Slideshow** settings are:

- **Time Delay**
- **Photo Scaling**
- **Fade In/Fade Out**
- **Slideshow Sequence**

Controlling photo playback is very similar to controlling a CD player. Once you have started a photo slideshow, use the DSM-750 remote to **Play**, **Pause**, or **Stop** the show. Press the **Skip Backward** and **Skip Forward** buttons to skip to the previous or next photo. To set the amount of time before the next photo in a slideshow is displayed, please continue to the **Slideshow** section on page 83.

# Search

Click the **SEARCH** button on the DSM-750 remote control and the following screen will appear. This screen allows you to search for music tracks, videos, and/or photos. The search function only works in MediaLounge™ mode, and you must be in the **My Media** section before conducting a search. Select between **All**, **Photo**, **Video**, or **Music**. After making a selection, click **OK** on your DSM-750 remote control.

**Note:** The search function only works for MediaLounge™ mode.

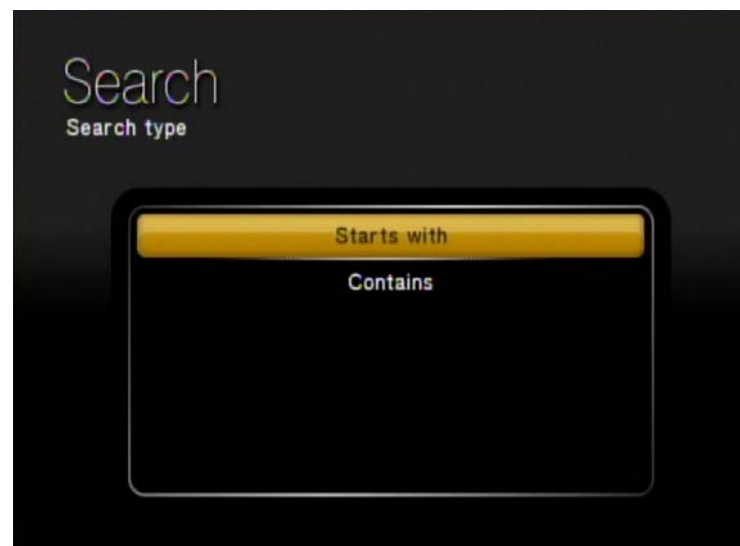
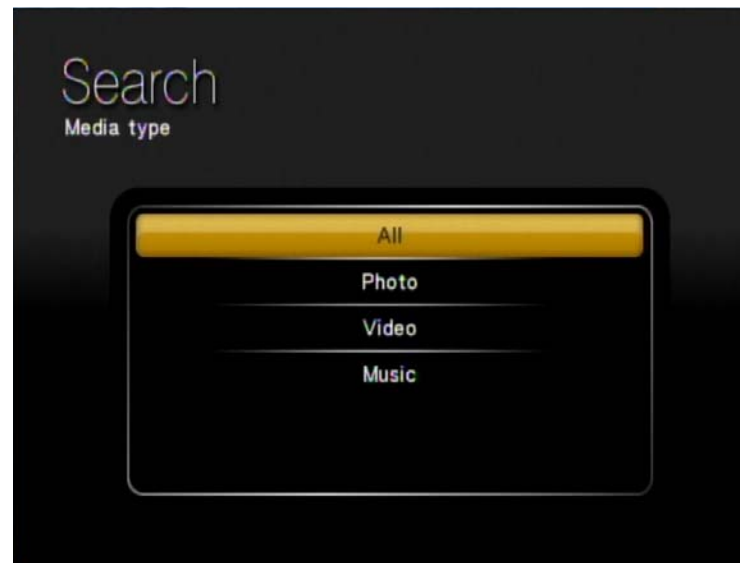
After selecting a media type to search in, you must provide a search type by either selecting **Starts with** or **Contains**.

- **Starts with** will search for files that begin with characters entered during your search. Example search of the letters **en** would be:

Enjoy the Spaghetti  
Endless Resolution  
Entering San Diego

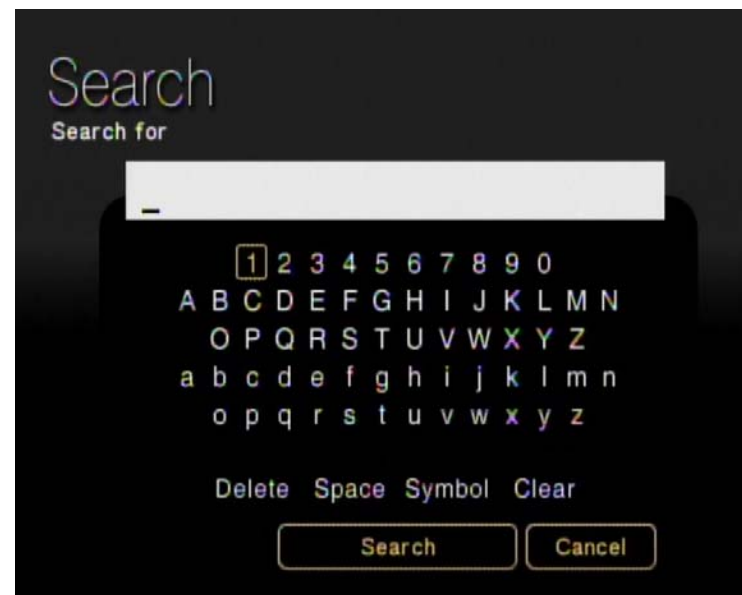
- **Contains** will search for files that contain the specified characters anywhere in the file name. Example search of the letters **en** would be:

This is the Beginning of the **End**  
The Small Pretender  
Entering San Diego



The next screen that follows will have an On Screen Keyboard with a search box. You **MUST** use the On Screen Keyboard to enter alphanumeric characters in the search box. Click **Search** to begin your search.

If you want to remove the last character entered, use the DSM-750 remote control's **Navigation Arrows** to toggle down and select the **Delete** option. While **Delete** is highlighted, click **OK** on the remote control to actually delete the last character. If you want to clear the entire search box, use the DSM-750 remote control's **Navigation Arrows** to toggle down and select the **Clear** option. While **Clear** is highlighted, click **OK** on the remote control to actually clear the search box. You may also press **CLEAR** on your DSM-750 remote control to clear the search box.

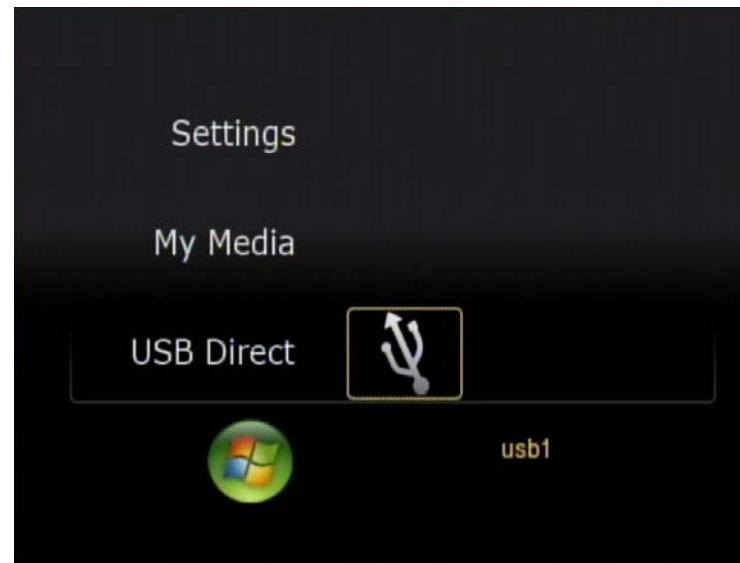


**Note:** The alphanumeric keypad on your DSM-750 remote control is unavailable while accessing the **Search** screen. You **MUST** use the On Screen Keyboard to continue with your search.

# USB Direct Menu

Insert your USB thumb drive into the USB port on the front panel of the DSM-750. The DSM-750 will automatically detect if there is a USB drive, and the **USB Direct** option will be available to you on the MediaLounge™ menu.

The DSM-750 currently supports NTFS, FAT, and FAT32 formats.



You can play music from your USB drive, and view photos from a listed server by accessing **My Media**.



## Supported Formats

The following file formats are supported using **USB Direct**:

MUSIC	VIDEO	PHOTO
• MPEG-1	• H.264 (.avi)	• JPEG (.jpg & .jpeg)
• MPEG-2	• WMV9 (up to 720p)	• GIF
• MP3	• VC-1	• PNG
• OGG	• MPEG-1	• TIF (.tif & .tiff)
• WAV	• MPEG-2 TS (up to 8Mbps)	
• WMA	• MPEG-2 PS (up to 8Mbps)	
• AIF (.aif only)	• M2V	
• AC3	• MPEG-4 (.mp4)	
• LPCM (.lpcm only)	• XVID	
	• M4V	

**Note:** You are able to play music while viewing a slideshow.