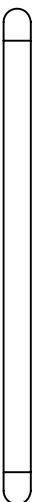
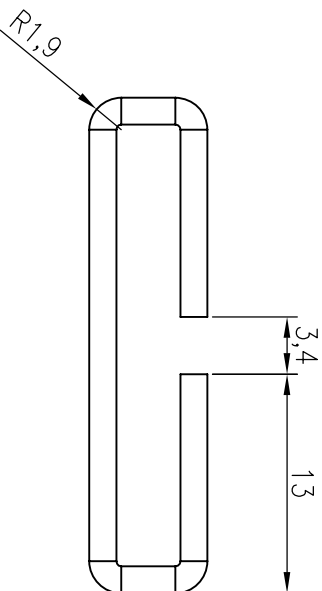
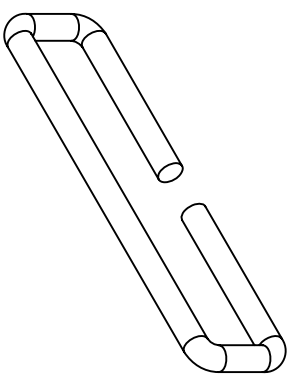
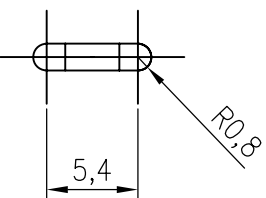
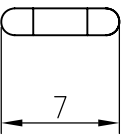
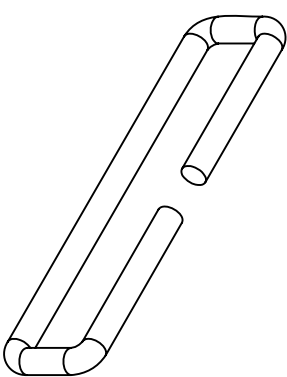
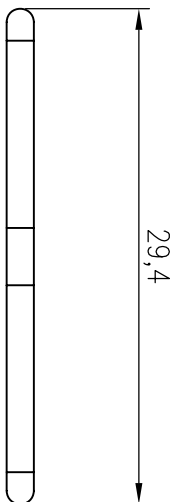


REV NO	EON	PLACE	ORIGINAL SIZE	CHANGE SIZE	CAUSE	DRAFTER	CHECKED	DATE
△	N/A	N/A	原尺寸	N/A	N/A	林敏達	張建達	6930



- 註:
1. 平均直徑 : 1.6mm
 2. 未標示之公差值請參照下列公差表
 3. 外觀表面處理 : 電鍍錫
 4. 材質說明 : 銅
 5. 其餘詳細尺寸請參照3D圖檔—IG0405N0



FILE ADDRESS \\192.168.0.228\開發部\機構\機構-共用\元件建立\整理零件庫\天線\3\MA007A241000-銅天線\ANT-G.dwg

公 差 表	單位 mm	DRAPTER	DATE
內 外 徑 公 稱	0-6	林敏達	6930
外 徑	+0.10	林敏達	6930
內 徑	+0.10	張建達	6930
長 度	±0.1		
	6-30		
	+0.2		
	30-120		
	+0.3		
	120-300		
	+0.5		
	300-600		
	+1.0		
	±0.2		
	±0.3		
	±1.0		

EN-73-03-04-1