

---

## EXHIBIT C - EUT EXTERNAL PHOTOGRAPHS

---

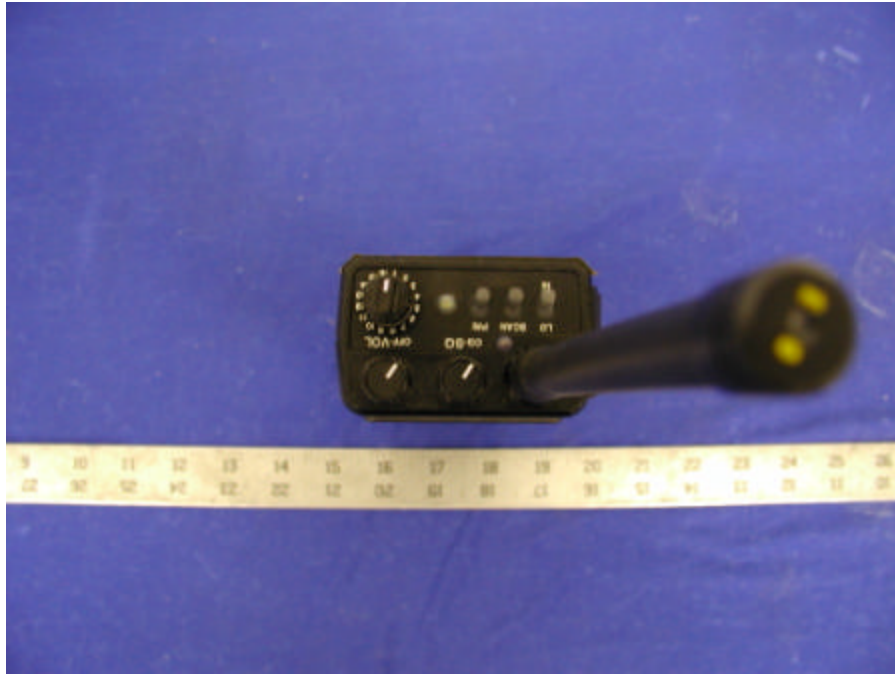
### Chassis - Front View



### Chassis - Back View



**Chassis - Top View**



**Antenna**



**Battery Front**



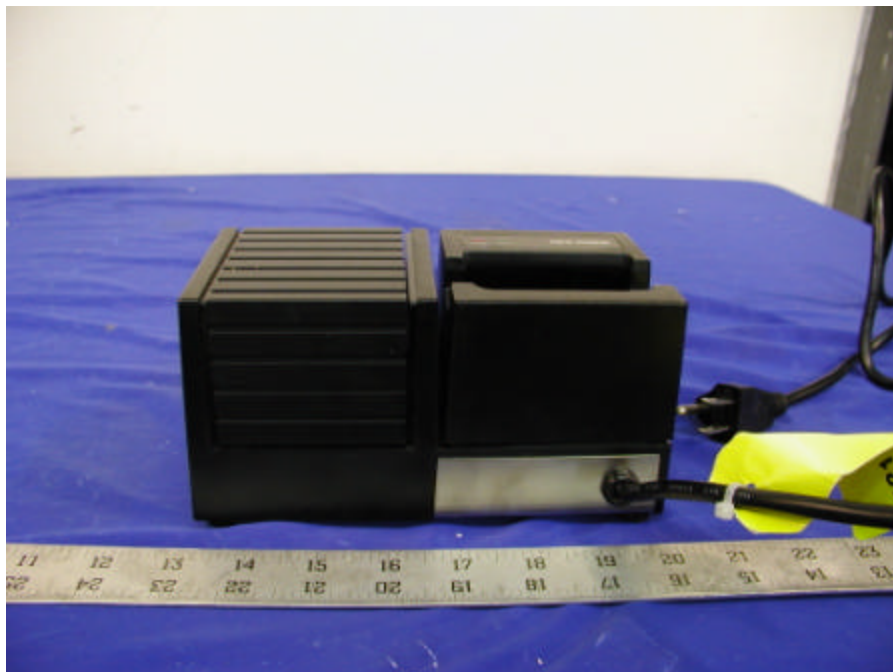
**Battery Bottom**



### Battery Top



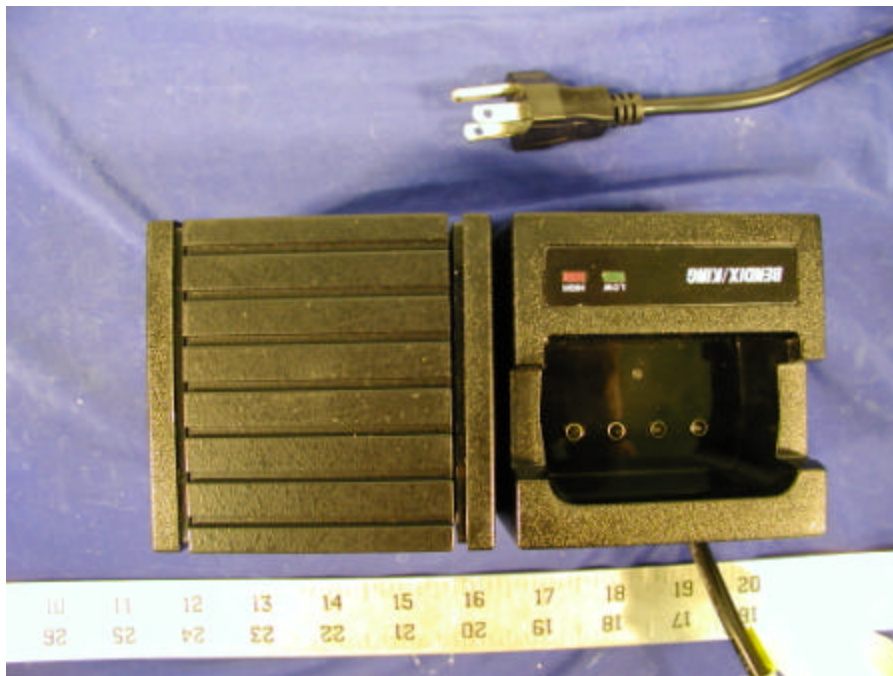
### Charger Front



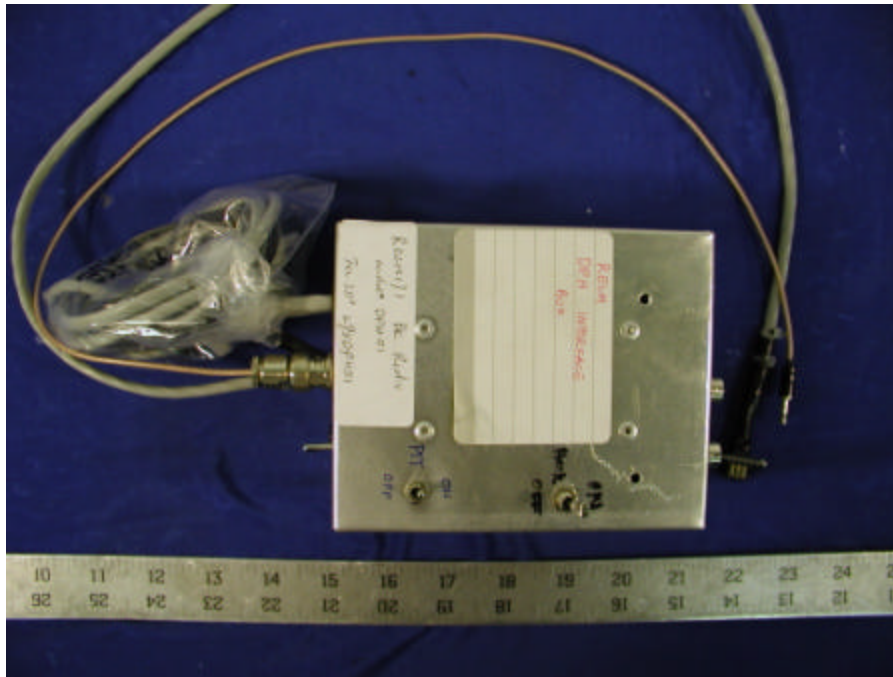
### Charger Bottom



### Charger Top



### Radio Interface Box



### Speaker

