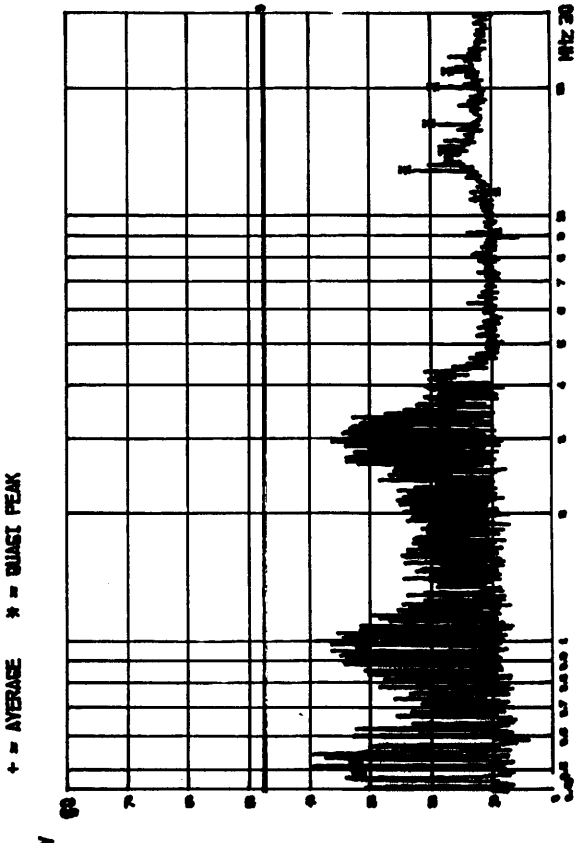


Frequency MHz	Average dBuV	AV-Margin dBuV	Quasi Peak dBuV	Peak dBuV	QP-Margin dBuV
0.4894	-	-	-	31.7	-16.3
0.4952	-	-	-	32.0	-16.0
0.5224	-	-	-	32.7	-15.3
0.5324	-	-	-	32.3	-15.7
0.9572	-	-	-	31.1	-16.9
0.9901	-	-	-	31.5	-16.5
1.0041	-	-	-	31.4	-16.6
1.0278	-	-	-	30.8	-17.2
1.0471	-	-	-	30.0	-18.0
9.2175	-	-	-	9.3	-38.7
11.0611	-	-	-	11.9	-36.1
11.5221	-	-	-	9.4	-38.6
12.9046	-	-	-	24.2	-23.8
14.2872	-	-	-	17.7	-30.3
16.5917	-	-	-	20.2	-27.6
20.2788	-	-	-	19.4	-28.6
22.1224	-	-	-	17.1	-30.9

* Limit exceeded

**Saab Marine Electronics AB
 Conducted Emission Test**

Start of Test: 14.MAR'00 . 14:40
 E.U.T.: Saab Looprader prs e/n: 10
 Oper. Condition: With e'horn. (Unshielded pow. cable)
 Operator: SO SIDLÖEN
 Test Spec: FCC Part 15, Subpart C. Conducted RFI
 Start Fr. Stop Fr. IF-BW Display Att. Transducer
 MHz KHz Mode dB type
 0.4500 30.0000 10.00 Max Hold 0 NSLK



CONDUCTED EMISSION ON 115 V ac. line terminal.