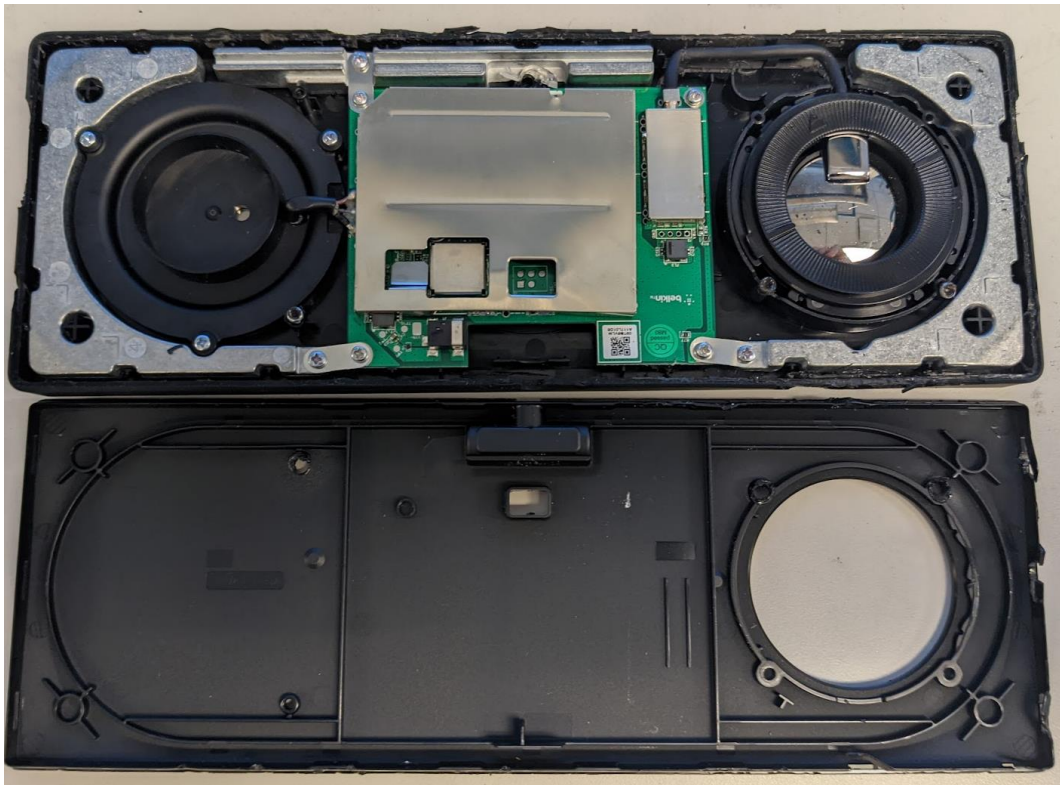
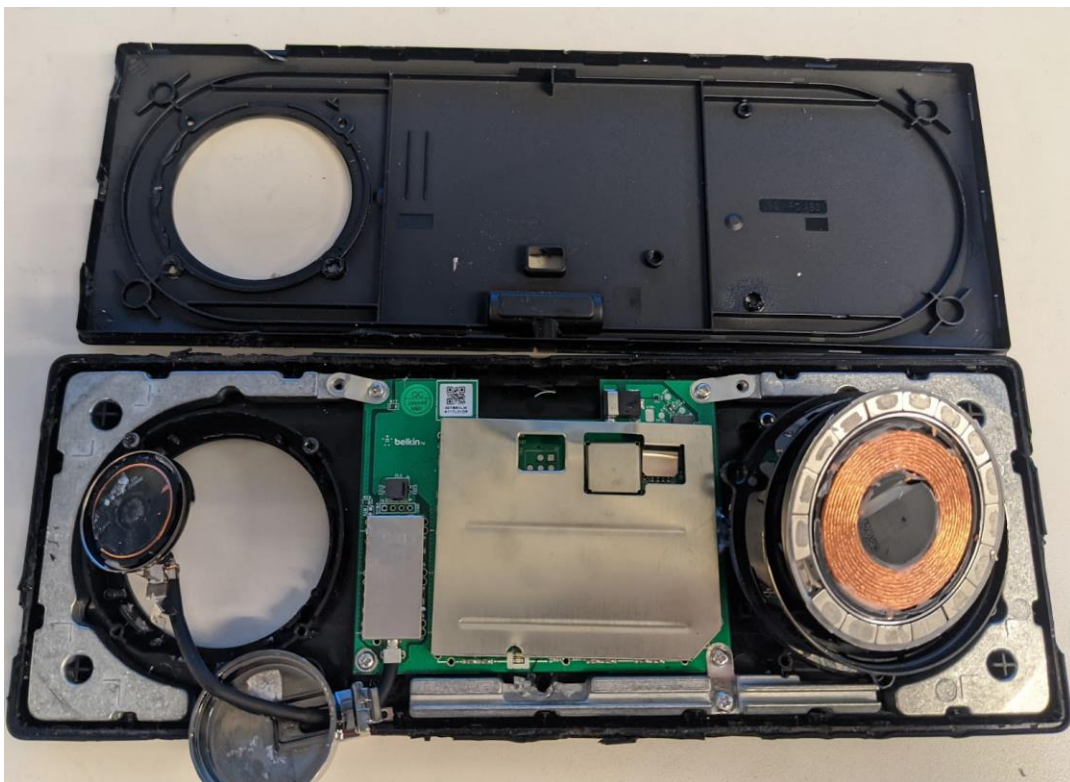


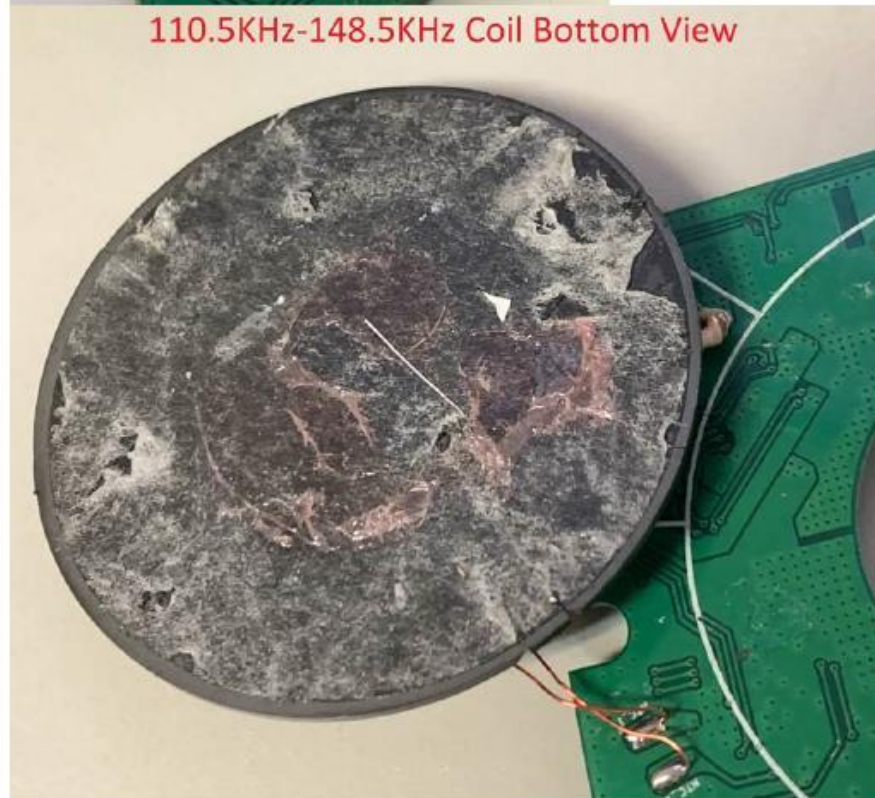
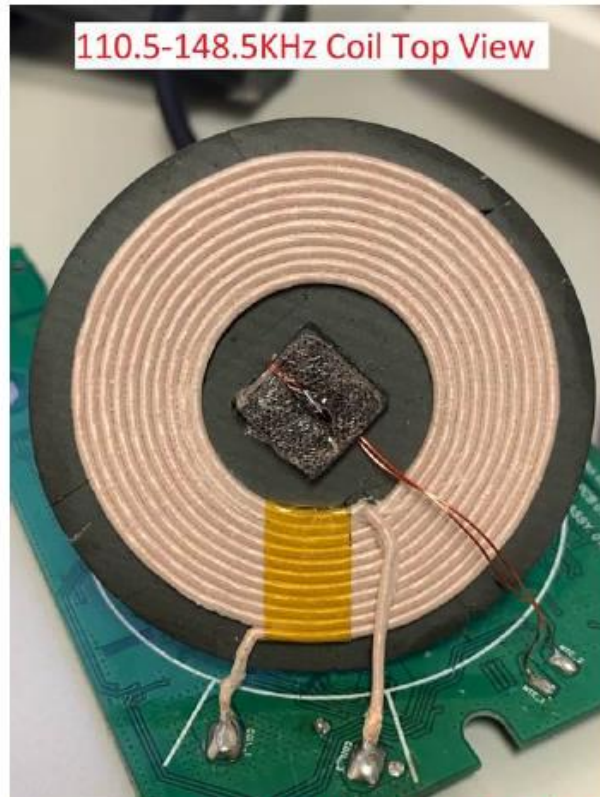
Open Enclosure (antennas hidden)



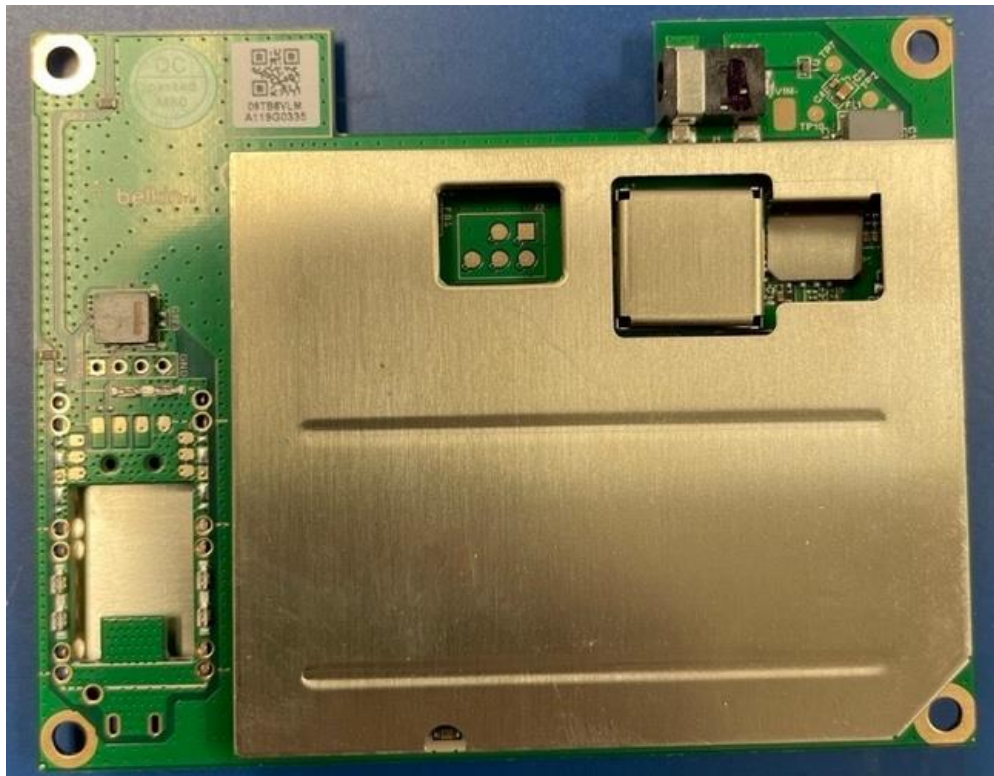
Open enclosure with Antennas Visible



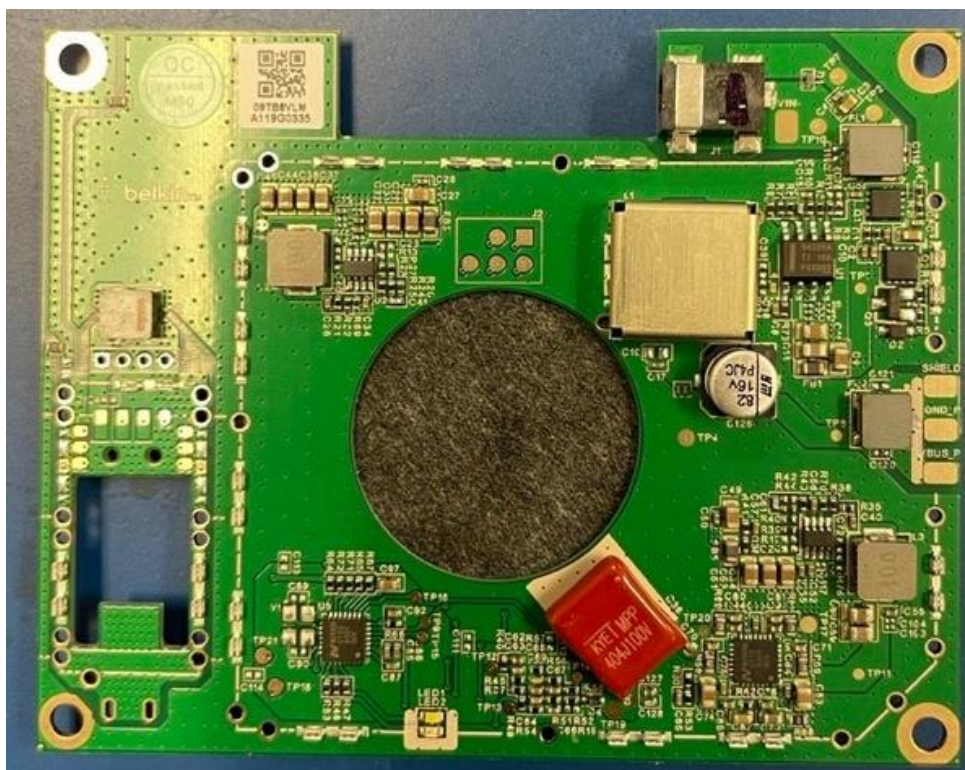
Coil (antenna) & PCB for Qi charger for AirPods



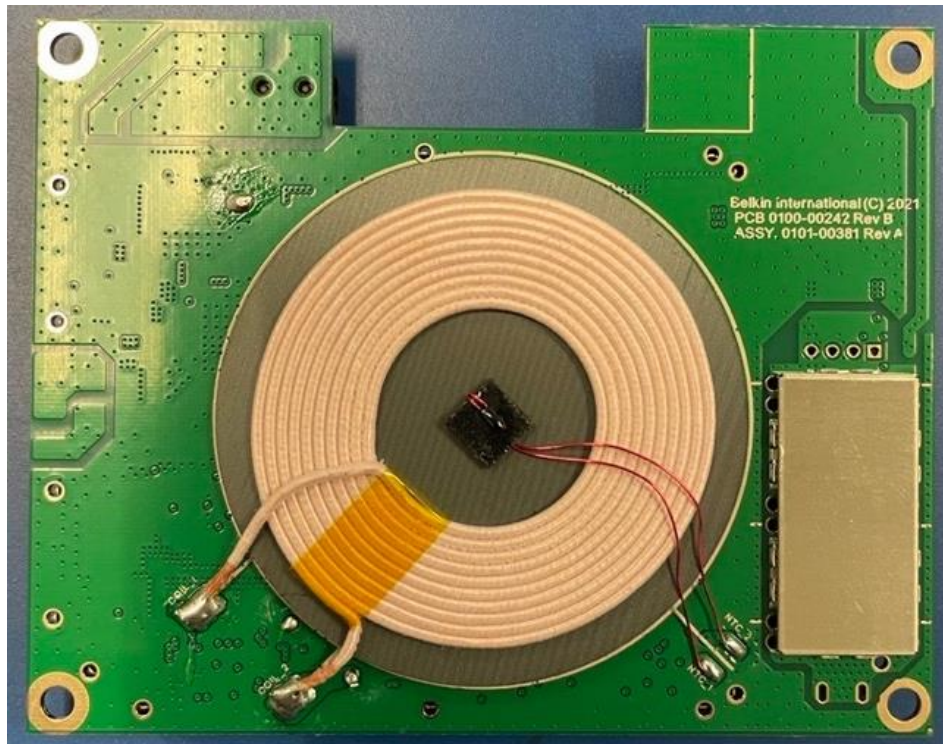
Top photo of PCBA with shields



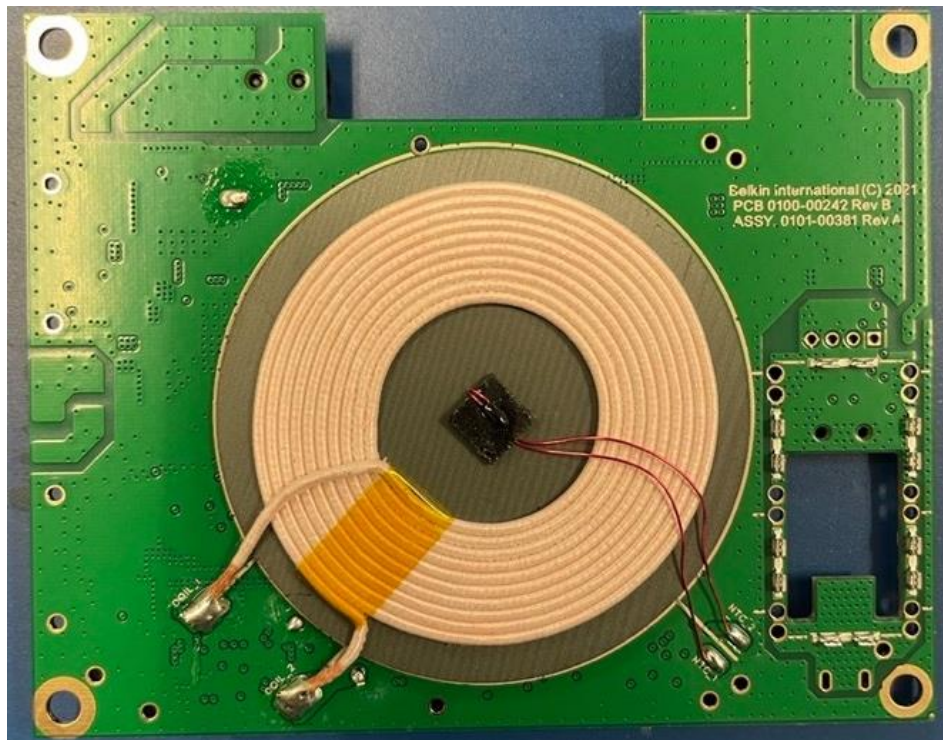
Top photo of PCBA without shields



Bottom photo of PCBA with shields

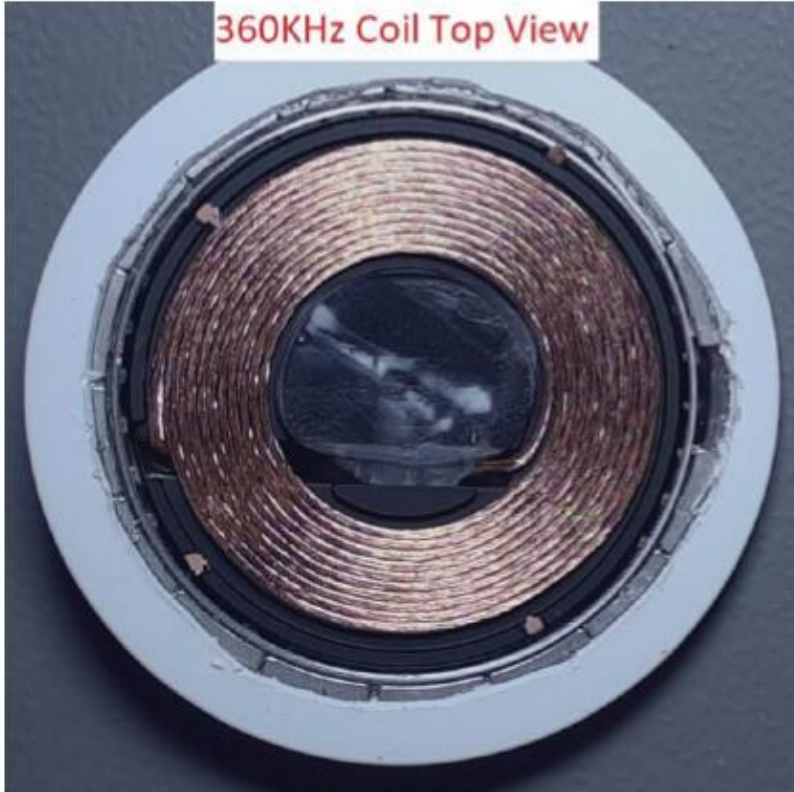


Bottom photo of PCBA without shields



Coil (antenna) & PCB for wireless charger for iPhone 12

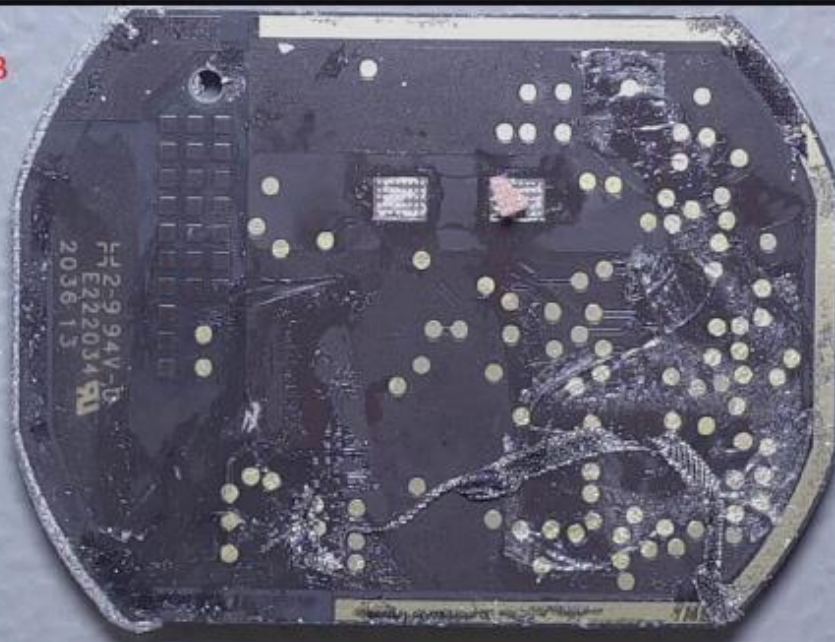
360KHz Coil Top View



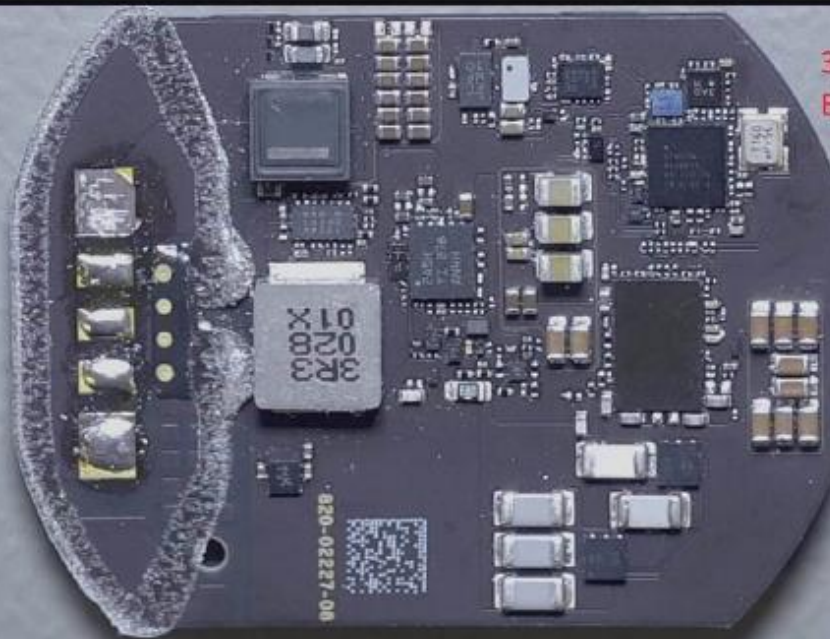
360KHz Coil Bottom View



360KHz PCB
Top View



360KHz PCB
Bottom View



326.5kHz + 1.778 MHz Apple Watch Coil (Top)



326.5kHz + 1.778 MHz Apple Watch Coil (Bottom)

