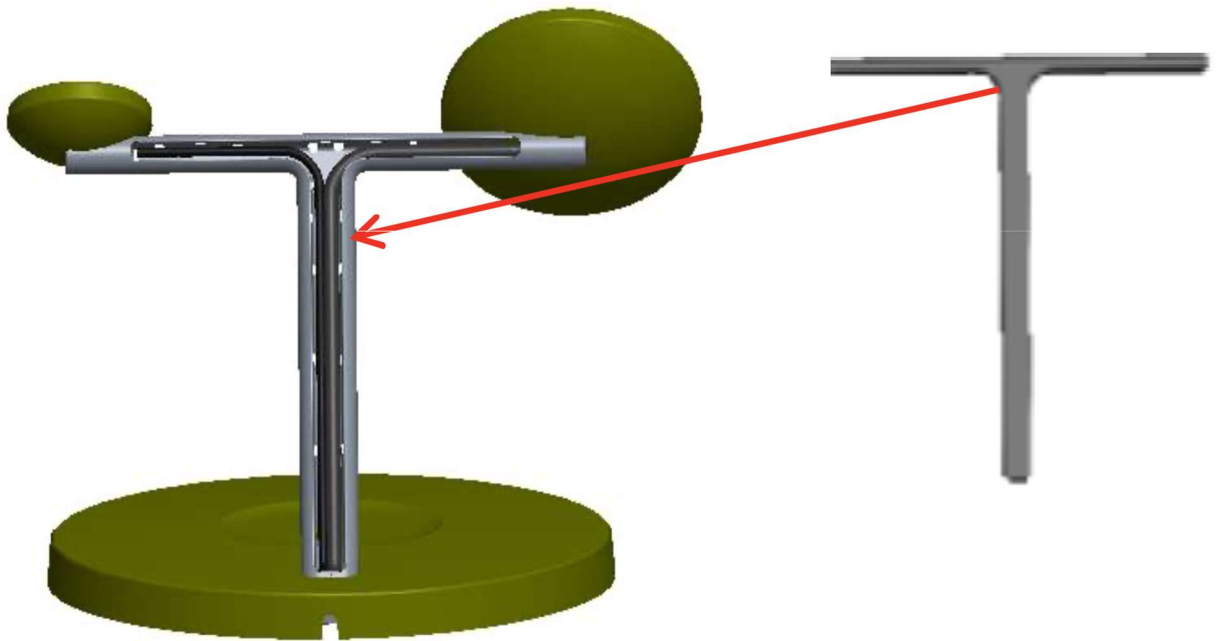
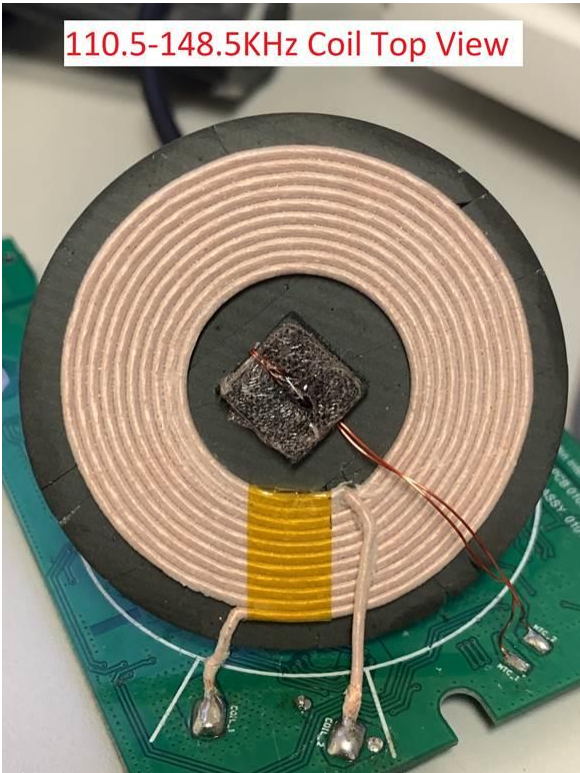


Power to the two upper chargers is fed from the lower charger via the metal stem as shown below. Internal photos of the three chargers are on following pages.

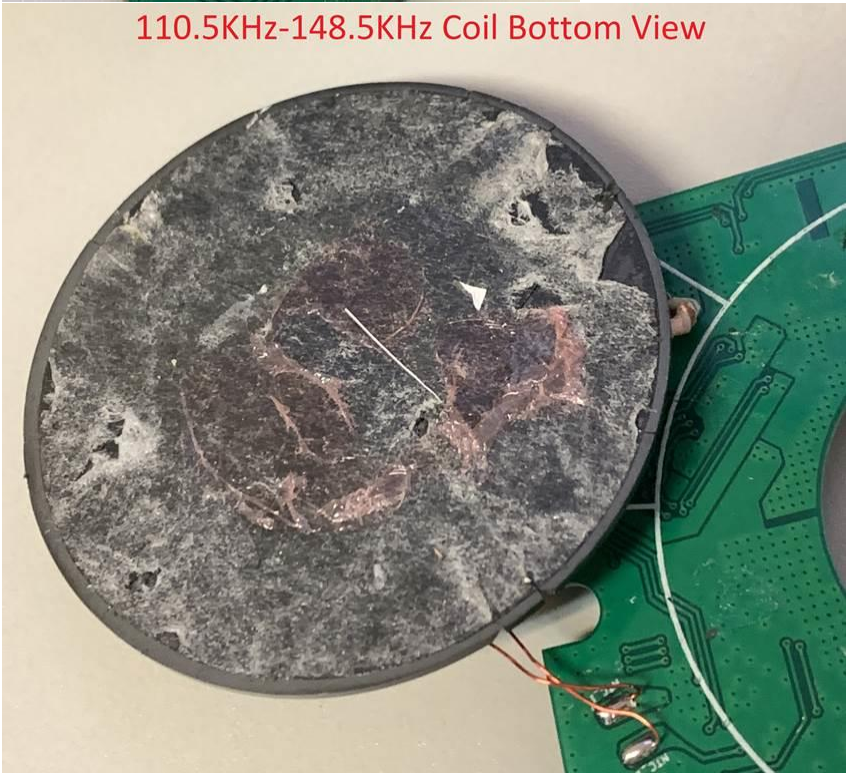


Coil (antenna) & PCB for Qi charger for AirPods

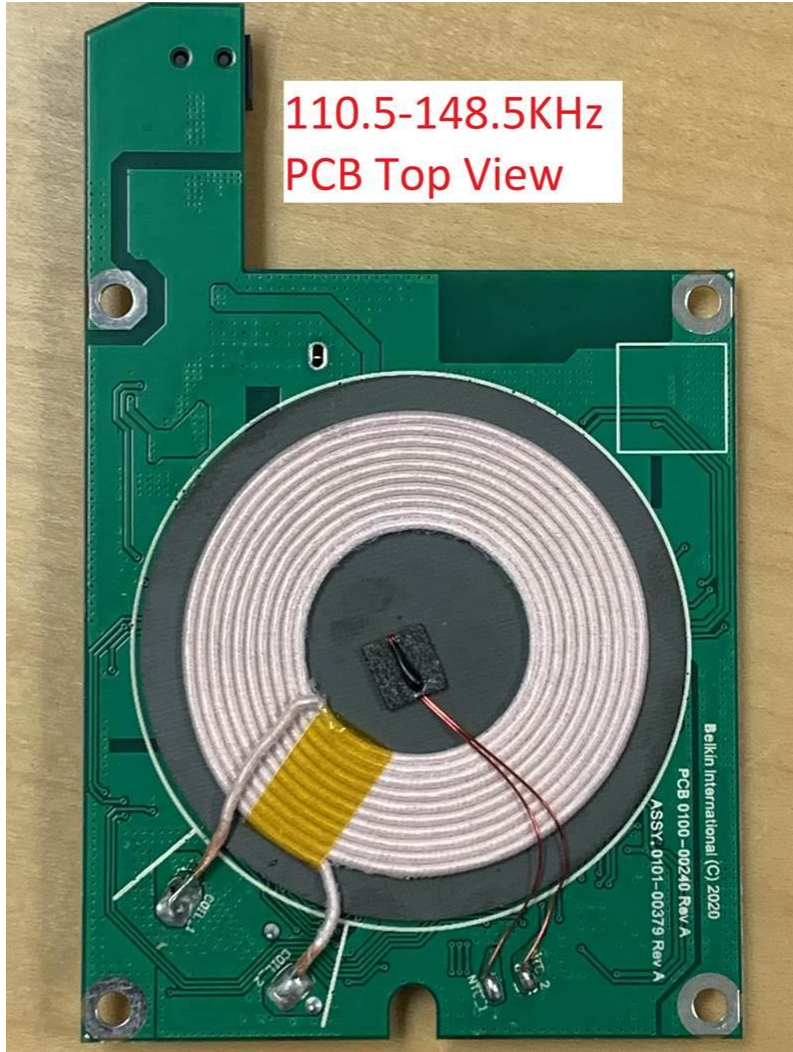
110.5-148.5KHz Coil Top View



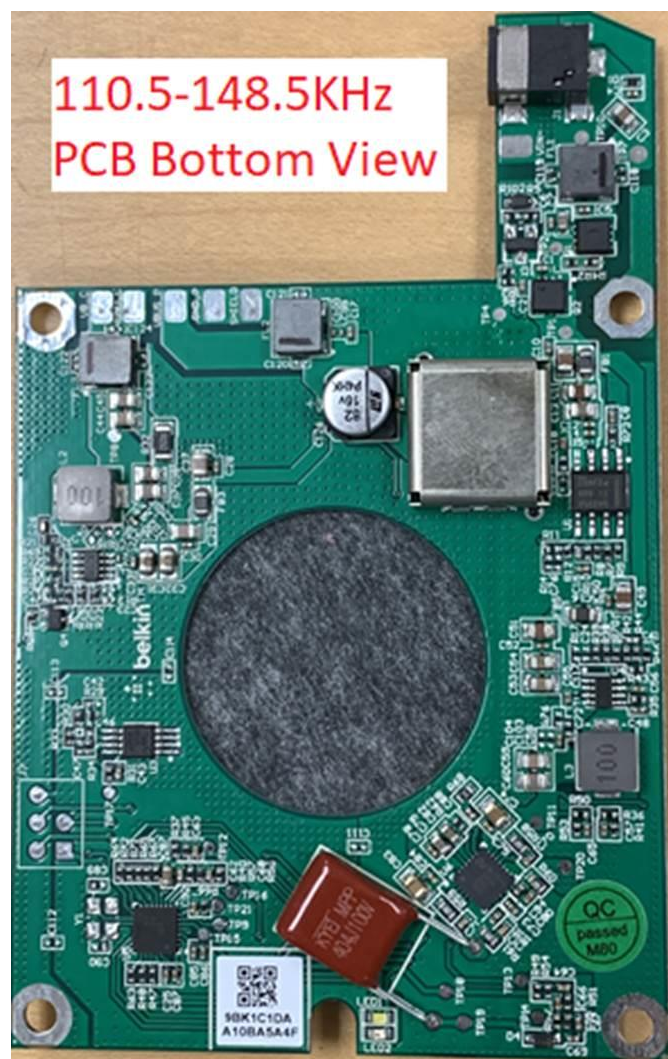
110.5KHz-148.5KHz Coil Bottom View



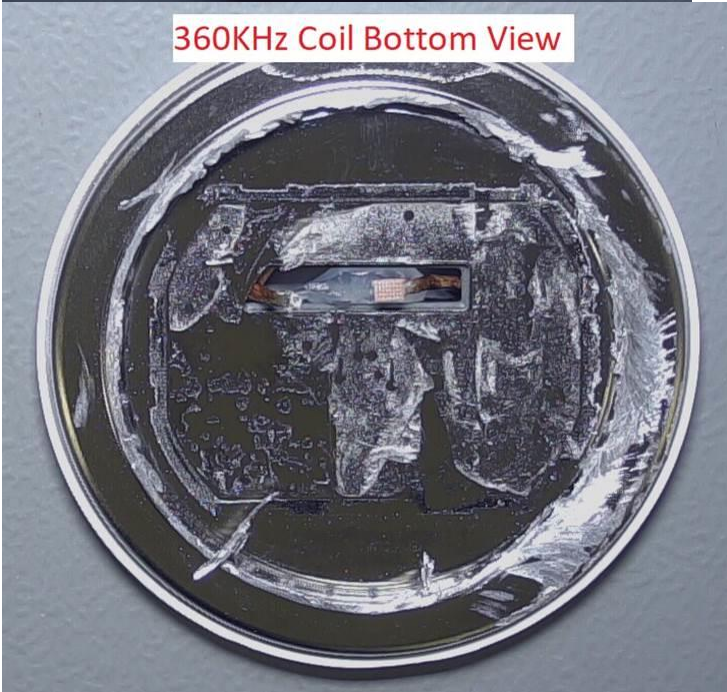
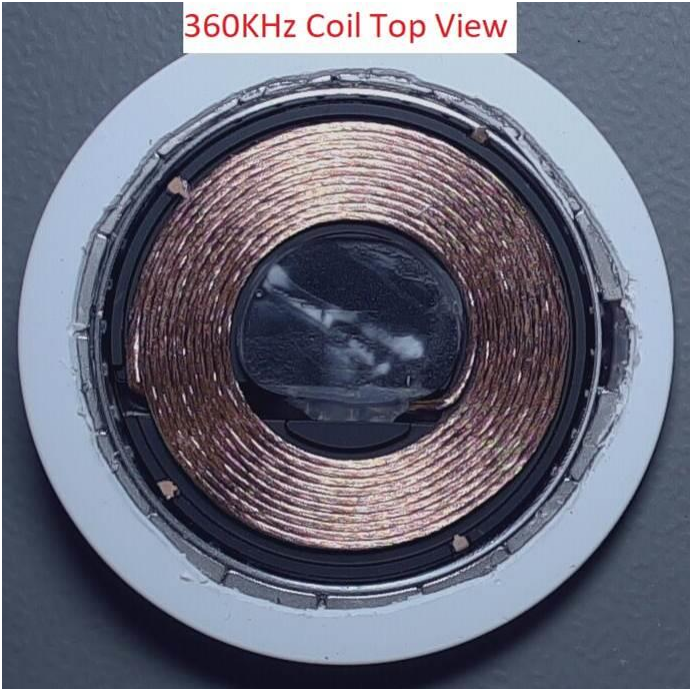
110.5-148.5KHz
PCB Top View



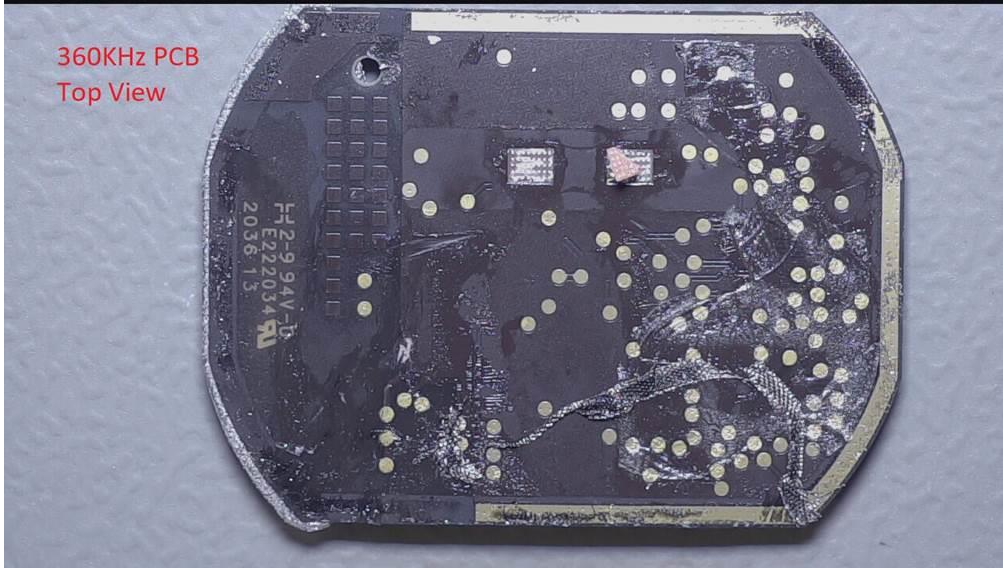
110.5-148.5KHz
PCB Bottom View



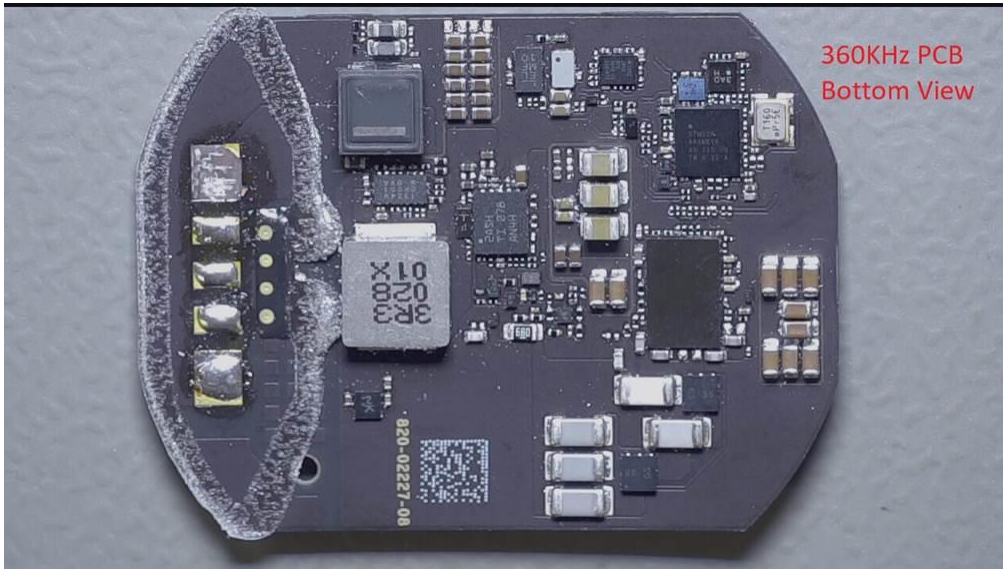
Coil (antenna) & PCB for wireless charger for iPhone 12



360KHz PCB
Top View



360KHz PCB
Bottom View

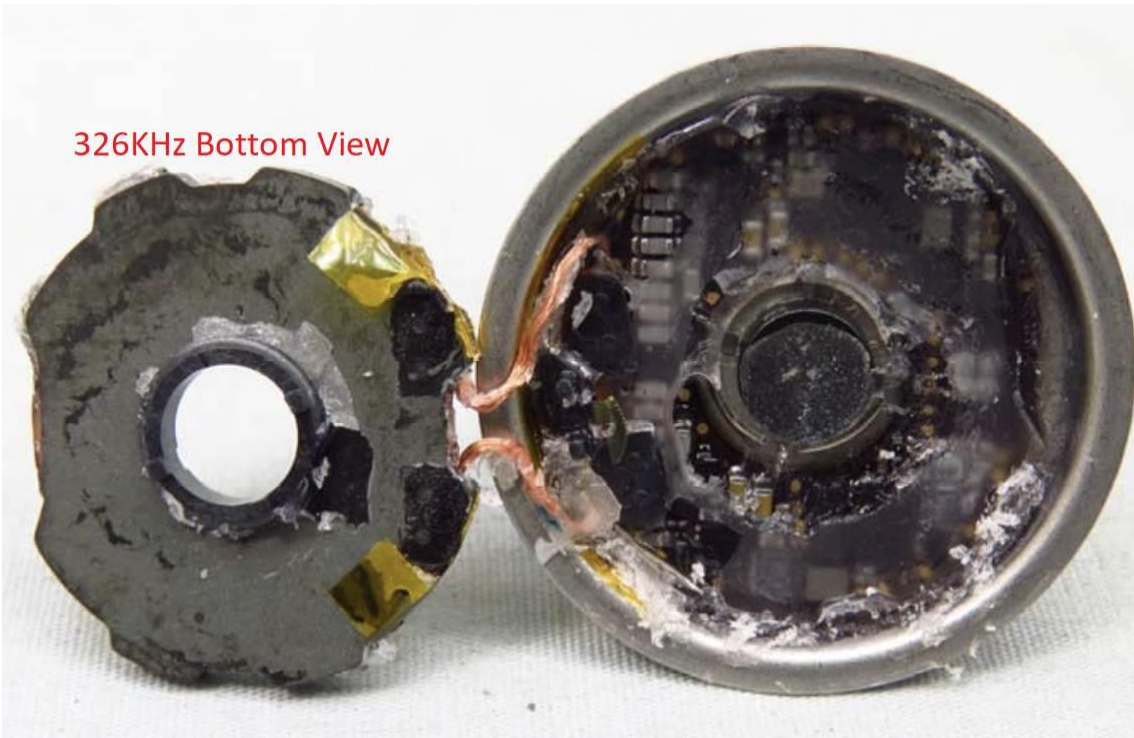


Coil (antenna) & PCB for Apple Watch charger

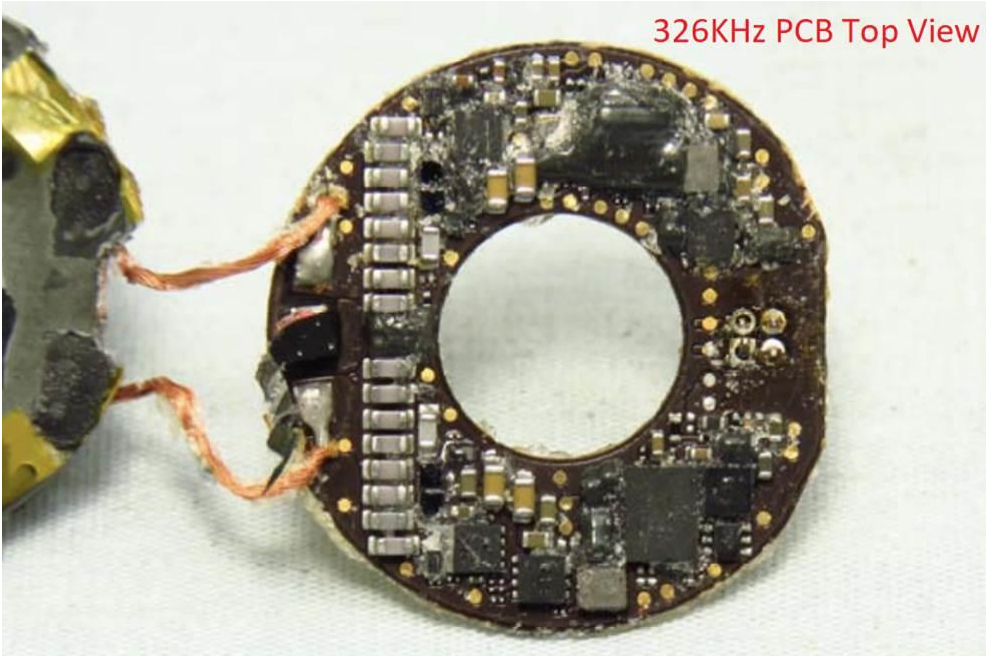
326KHz Coil Top View



326KHz Bottom View



326KHz PCB Top View



326KHz PCB Bottom View

