



WIRELESS BATTERY

SCALE 1:1

IDA-. WIN133

sku xxxxx
CMF/Artwork SPECIFICATION
[page 2 of 3]

REVISION:A09 DATE: 04/28/2020

REVISION NOTES:
A04: update serialization format
A07: revise cert rating
A08: revised rating
A09: Add Wave 2 graphic info.

DESIGNER: [CP]

ALL DIMENSIONS IN MM. SCALE 1:1

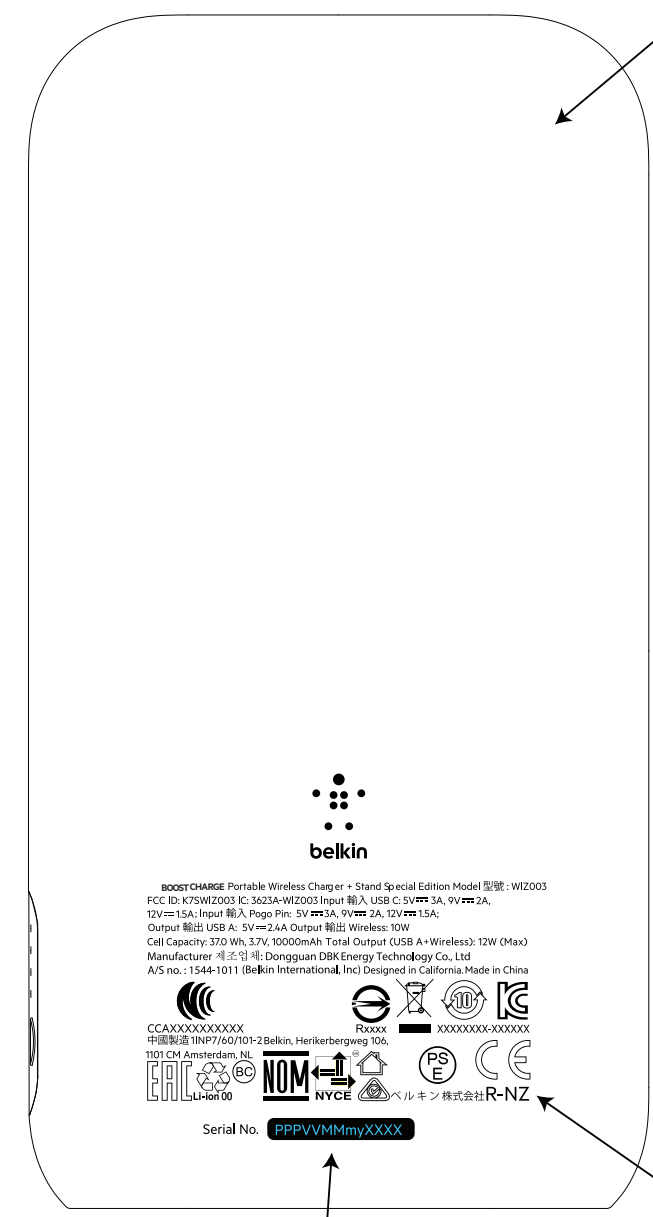
COLOR STANDARDS USED:

STYLE OVERVIEW

PART	MATERIAL	Black	white
F	padprint	Pantone 11c (Match F8J234 black for reference)	Pantone 428c (Match F8J234 for white reference)
G	laser etch	reference MPP103	
H	back housing	PC/ specified by ME COLOR: Midnight black (F8J234 FOR color REFERENCE) TEXTURE: FT-1010 B	PC/ specified by ME COLOR: SNOWCAP WHITE (F8J234 FOR color REFERENCE) TEXTURE: FT-1010 B

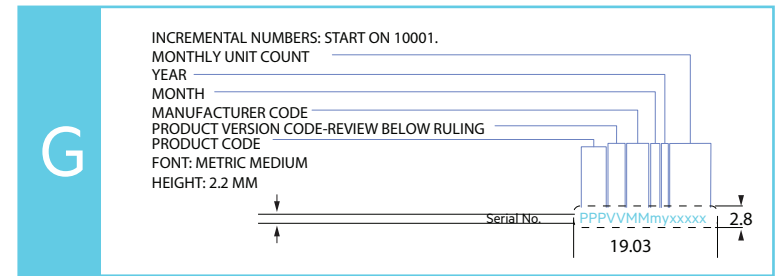
DO NOT MAKE CHANGES WITHOUT PERMISSION FROM BELKIN IDG.

Wave 2



Left side

Back





BATTERY DOCK

IDS-. WIN133

sku xxxxx
CMF SPECIFICATION [page 3 of 3]

REVISION:A00 DATE: 08/02/2019

REVISION NOTES:
A00:

DESIGNER: [CP]

ALL DIMENSIONS IN MM. SCALE 1:1

COLOR STANDARDS USED:

STYLE OVERVIEW

PART	MATERIAL	Black	white
A	INNER BASE- PC	Midnight black soft touch	Snowcap white soft touch
B	-FOOT PAD- Silicone diecut sheet	COLOR: MIDNIGHT BLACK (F8J234 FOR color REFERENCE) TEXTURE: VDI 15 or match F8J234	COLOR: SNOWCAP WHITE (F8J234 FOR color REFERENCE) TEXTURE: VDI 15 or match F8J234
C	BASE FRAME-PC	COLOR: MIDNIGHT BLACK TEXTURE: POLISHED S1-A1 HIGH GLOSS	COLOR: SNOWCAP WHITE TEXTURE: POLISHED S1-A1 HIGH GLOSS
D	padprint	Pad printed logo Pantone 11c (Match F8J234 black for reference)	Pad printed logo Pantone 428c (Match F8J234 for white reference)
E	tethered cord	Midnight black PVC	Snowcap white PVC

DO NOT MAKE CHANGES WITHOUT PERMISSION FROM BELKIN IDG.

male POGO PIN

