

F8Z065-Reciver



F8Z065 Photo

Model number :F8Z065

F8Z065-Reciver

CONTENTS

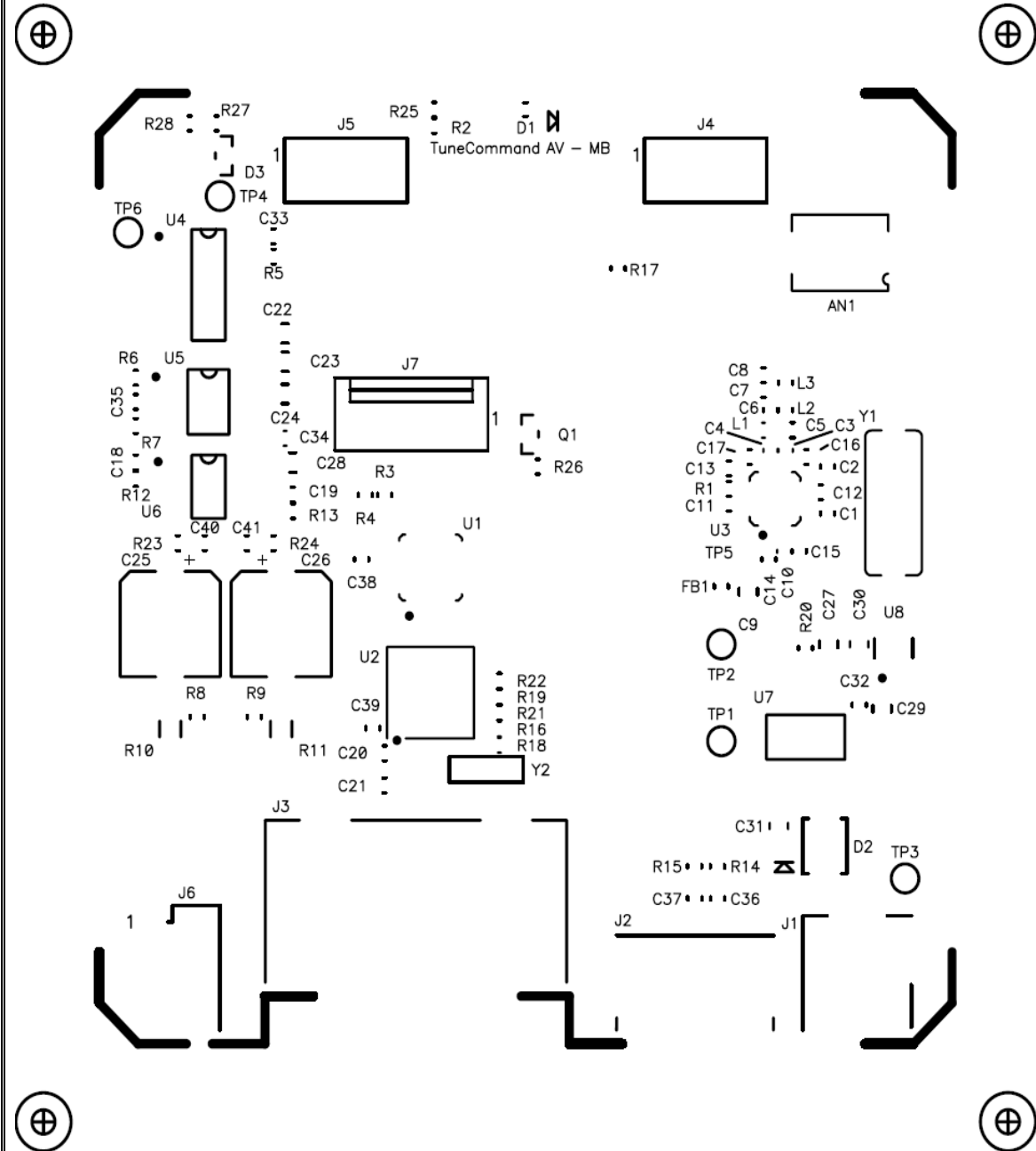
Date of preparation: 2006/3/22

Product Name: F8Z065

- 1. Product Photo**
- 2. Contents of document**
- 3. PCB Layout**
- 4. Schematic**
- 5. Block diagram**
- 6. Environmental and Reliability test**
- 7. Product – Specification Sheet**
- 8. Regulatory approval**
- 9. BOM**
- 10. Exploded View**

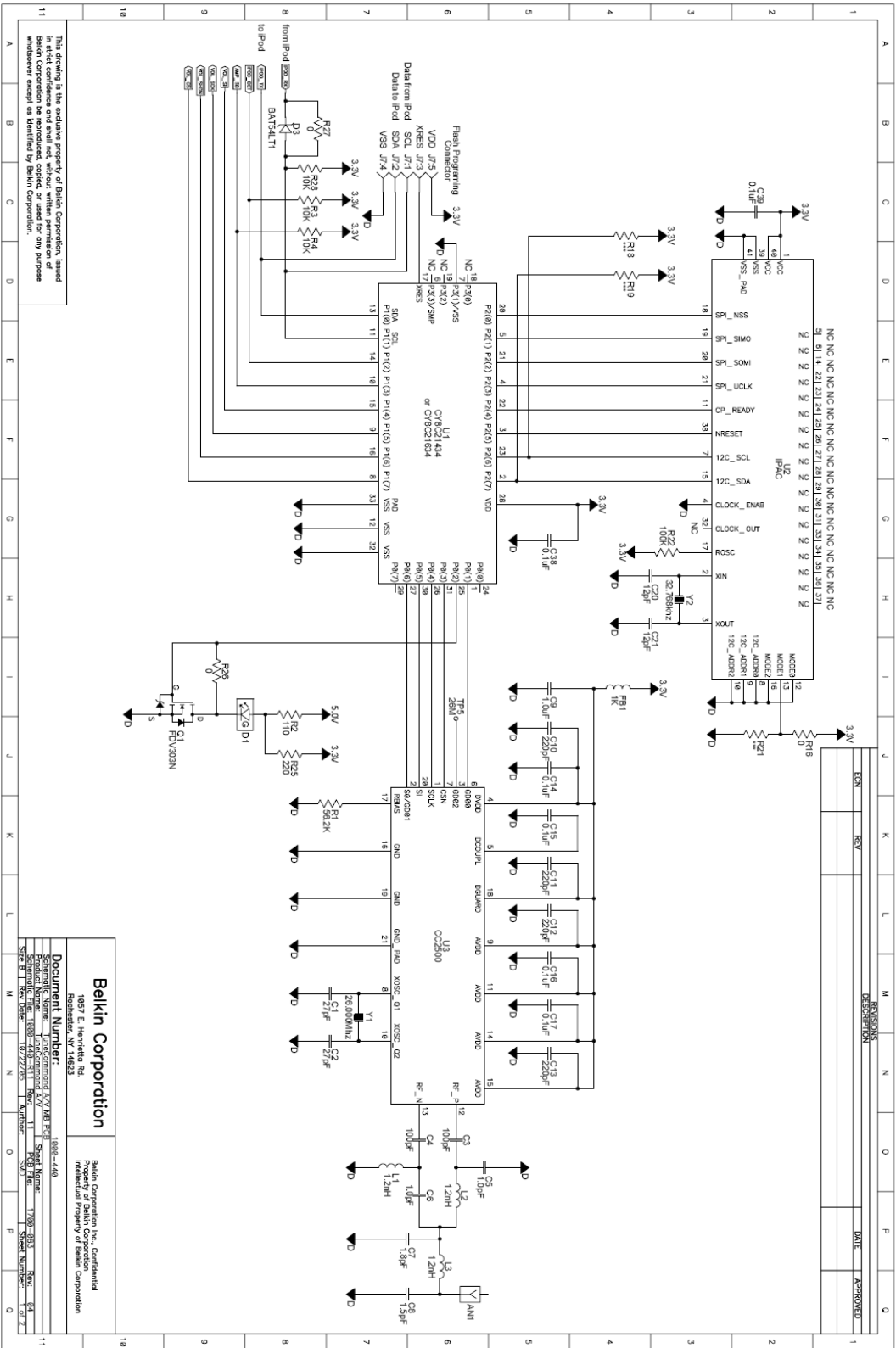
F8Z065-Receiver

F8Z065 PCB Layout (Top)



F8Z065-Reciver

F8Z065RX-SHE



This drawing is the exclusive property of Belkin Corporation, issued in strict confidence and shall not, without written permission of Belkin Corporation, be reproduced, copied, or disseminated in any form whatsoever except as identified by Belkin Corporation.

Belkin Corporation
 1807 E. Henrietta Rd.
 Boscawen, NY 14823

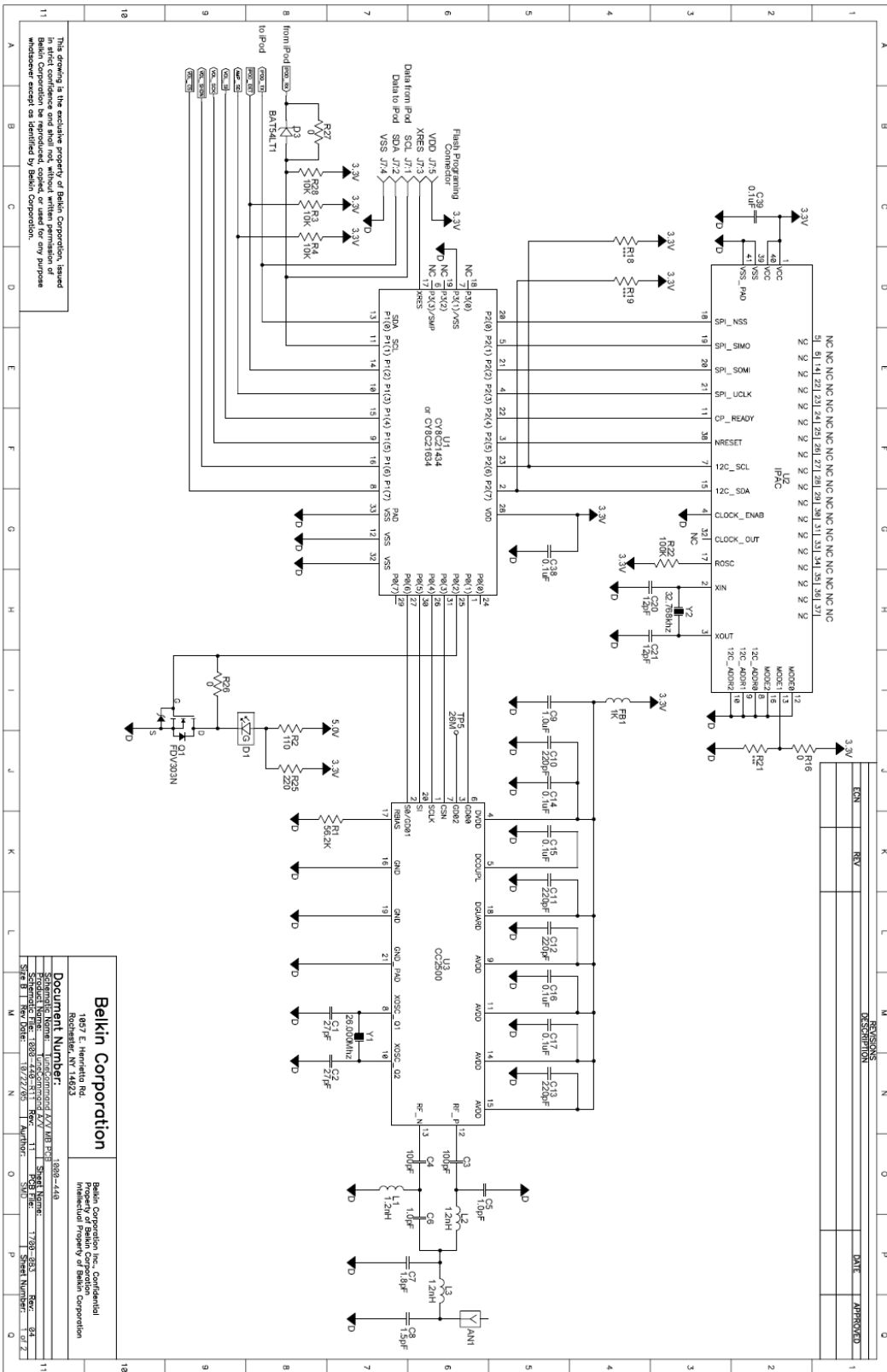
Belkin Corporation Inc. Confidential
 Property of Belkin Corporation
 Intellectual Property of Belkin Corporation

Document Number: 1808-448
 Revision: 1.0
 Date: 10/27/05
 Author: [Redacted]

Site B 1 Rev. Date: 10/27/05

F8Z065-Reciver

F8Z065RX-SHE



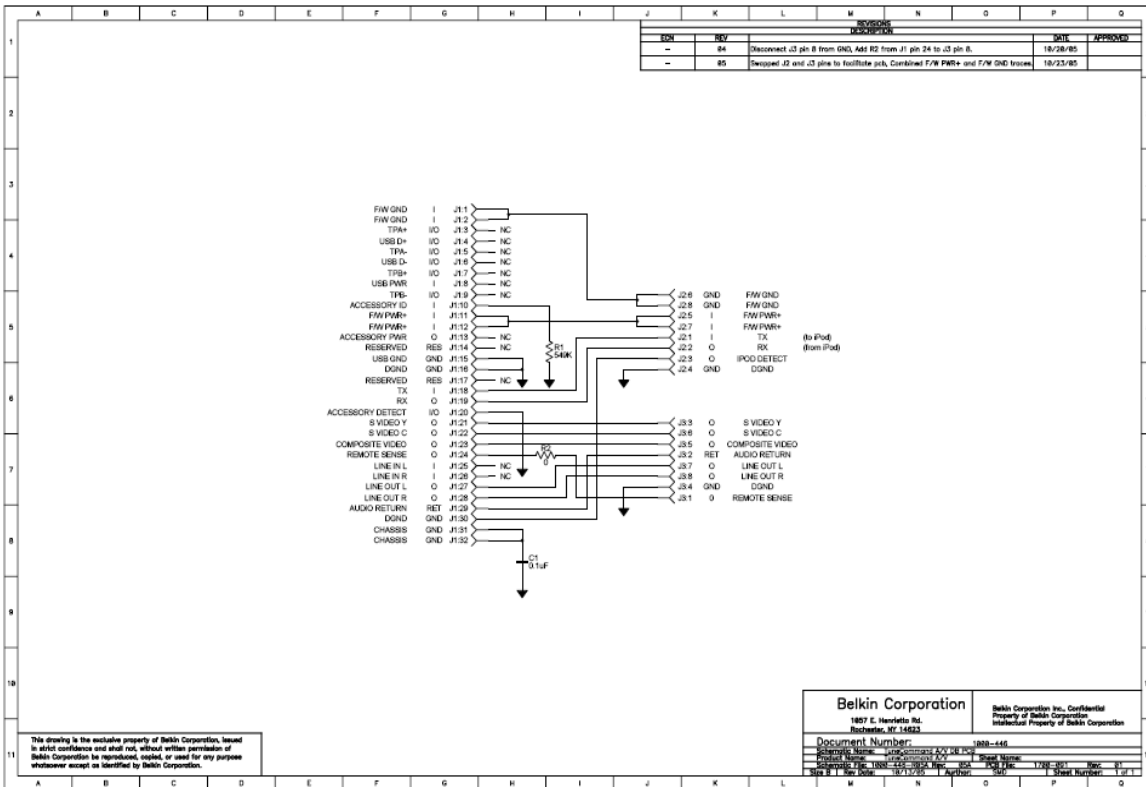
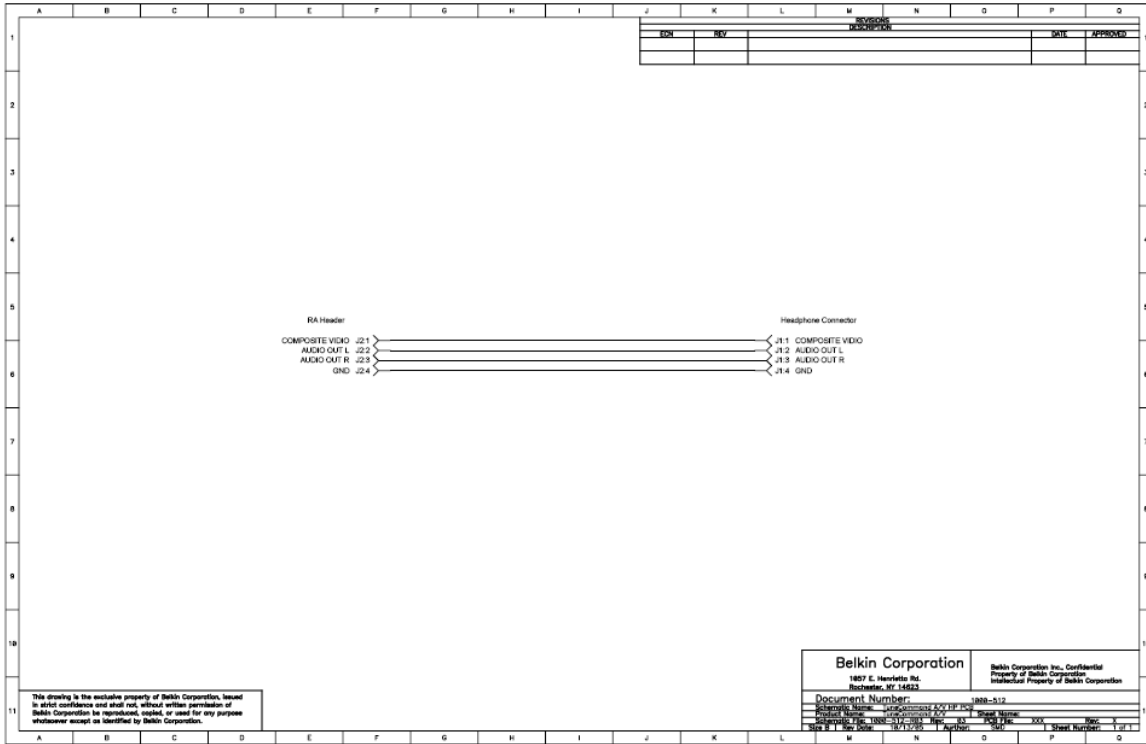
This drawing is the exclusive property of Belkin Corporation. In strict confidence and shall not, without written permission of Belkin Corporation be reproduced, copied or used for any purpose whatsoever except as identified by Belkin Corporation.

Belkin Corporation
 1857 E. Herndon Rd.
 Herndon, VA 20185

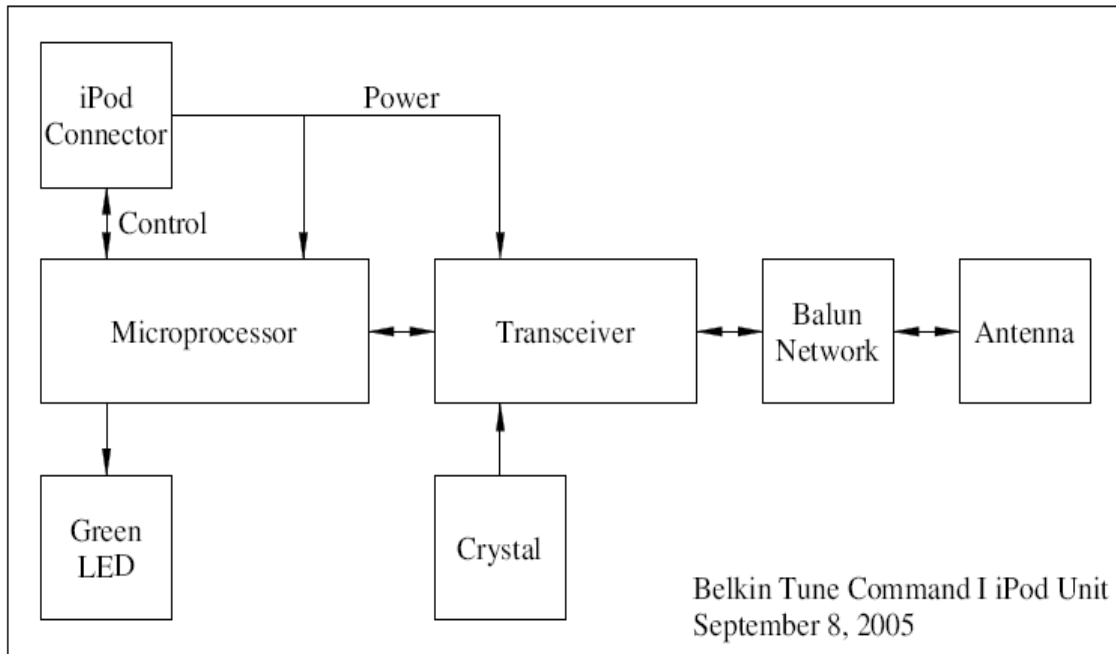
Document Number: 1858-448
Product Name: F8Z065RX-SHE
Revision: 1.0
Issue Date: 10/27/05
Author: [Name]

Belkin Corporation Inc. Confidential
 Intellectual Property of Belkin Corporation

F8Z065-Reciver



F8Z065-Reciver



F8Z065-Reciver

1. Temperature Cycle test

Chamber is set for -20° C. to +45° C. Each temperature extreme is held for one hour before transitioning to the other extreme. The units are powered under normal real-world conditions and electrically loaded while in this chamber. Total time in the chamber is 32 hours.

2. High temperature storage test

Chamber is set for +60°C, then put the unit into chamber for 48H .

3. Burn In Test (bare unit)

conditions and electrically while in this burn in The burn in room is set for 40°C~45°C, the unit be powered under normal real-world room. Total testing time in the chamber is 48H

4. CLA Drop Test (bare unit)

Drop the CLA unit from a height of 100cm onto concrete. (Six side for one time)

5. Printed/Coated reliability Test

Using the alcohol to wipe the surface screen of unit, the force about 300g . Then using the 3M tape to stick the screen for 3 times in same location .

6. Button / Switch Life Test (bare unit)

Using a special test jig to push the button or switch for 5000 times, then check the button if in condition & requirements still.

7. Socket/Plug Life Test

Pulling and inserting socket/plug 5000 time.

8. Hi-Low Temperature Storage (Packing unit)

Chamfer is set for 55°C, then put packing unit into chamfer for 48H. Chamfer is set for 40°C, 40°C 90% for 48H.

9. Drop Test (Packing unit)

Drop the packing unit from a height of 120cm onto concrete.

10. Vibration Test (Packing unit)

Put the packing unit on vibration equipment, then set the testing parameter for equipment. (The test duration is 30 minutes per all three plans)

11. Cable Bending Test

Load force :150g, Bend angle:120 degree, Bend frequency:200 time.

12. Cable Pulling Test

Load force:3kg, Holding time:1min,

13. Emission Frequency Test

20°C~40°C~10°C~5°C~0°C~-10°C~-20°C, changing one time in one hour ,total 13H.

Reliability Testing condition List

Temperature Cycle Test (bare unit)	45°C~-20°C~45°C Humidity 90%,Four stage and 8H per each stage.Total time in the chamber is 32 hours.
High Temperature Store Test (bare unit)	60°C 48h
Bum In Test (bare unit)	45°C 48h
Drop Test (bare unit)	Height:100cm
Printed/Coated Reliability Test	Alcohol test 15 times with 300g;
Button/Switch Life Test	3M test 2 times for same location.
Socket/plug Life Test	Pulling and inserting the socket/plug 50000 times
Hi-Low Temperature Store (packing unit)	55°C 48H; -20°C 48H; 40°C 90% 48H
Drop Test (packing unit)	Pls ref normal standards
Vibration Test (packing unit)	The test duration is 30 minutes per all three plans
Cable Bending Test	Bend Frequency:200 times ;Bend Angle:120 degree Load Force:150g
Cable Pulling Test	Load Force:3kg; Holding Time:1 minutes

F8Z065-Reciver

Product Electronic Specification Sheet-F8Z065

MODEL: F8Z065

VER : A/0

A. Receiver section

ITEM	DESCRIPTION	UNIT	Normal		Limit	
1	Receiver RF FREQUENCY	MHz	2433		+/-1	
2	RF Power output (Direct test)	dBm	-19		+/-3	
3	Current Drain at diagnostics model	mA	32.7		+/-2	
	Current Drain when take out Ipod	mA	15		+/-1	
4	Field distance test (Tx&Rx)	feet	>170		>120	
5	RCA audio output Test (L/R-G 10K ohm)	-				
	RCA-R channel Output@Left channel only input 0dB sine,1KHz	mV	0		+/-0.1	
	RCA-L channel output@Left channel only input 0dB sine,1KHz	V	0.93		+/-0.05	
	RCA-R channel Output@Right channel only input 0dB sine,1KHz	V	0.93		+/-0.05	
	RCA-L channel output@Right channel only input 0dB sine,1KHz	mV	0		+/-0.1	
6	Headphone Amp. And Vol control Test(L/R-G 32 ohm)	-				
	R&L input 0dB sine,1KHz	-				
	(1)Distortion &Output level@ default Volume when ON state	-				
	Headphone -R output (Distortion &Level)	%/mV	0.13	33.6	+/-0.1	+/-1
	Headphone -L output (Distortion &Level)	%/mV	0.14	33.6	+/-0.1	+/-1
	(2)Response -3dB	-				
	Headphone -R output	Hz~KHZ	30	21.2	+/-5	+/-1
	Headphone -L output	Hz~KHZ	30	21.2	+/-5	+/-1
	(3)Signal to Noise ratio(UN-WTD 22Hz~22KHz)	-				
	Headphone -R output	dB	66		+/-5	
	Headphone -L output	dB	65		+/-5	
	(4) Hold "Volume up" button for 5seconds after Left channel only input 0dB sine ,1KHz	-				
	Headphone -L output	%/V	0.06	0.86	+/-0.05	+/-0.05
	Headphone -R output	%/mV	-	0.33	-	+/-0.05
	Hold "Volume down" button for 5seconds after Left channel only input 0dB sine ,1KHz	-				
	Headphone -R output	%/mV	-	0	-	+/-0.1
	Headphone -L output	%/mV	-	0	-	+/-0.1
	(5)Hold "Volume up" button for 5seconds after Right channel only input 0dB sine ,1KHz	-				
	Headphone -R output	%/V	0.05	0.86	+/-0.05	+/-0.05
	Headphone -L output	%/mV	-	0.33	-	+/-0.05
Hold "Volume down" button for 5seconds after Right channel only input 0dB sine ,1KHz	-					
Headphone -R output	%/mV	-	0	-	+/-0.1	
Headphone -L output	%/mV	-	0	-	+/-0.1	
7	S-Video Test	-				
8	Composite Video Test	-				
9	RCA L/R Test	-				

F8Z065-Rx Product specification

F8Z065-Reciver

- I Regulator Approval**
 - US shipment : FCC
 - Europe shipment : CE
 - Australia shipment : C-tick

- I BOM**
 - Please refer to attached document.

- I Exploded View**
 - Please refer to attached document.

- I Operation manual**
 - Please refer to attached document.
 -