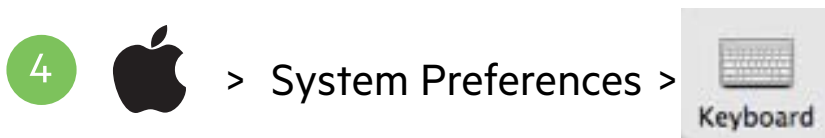
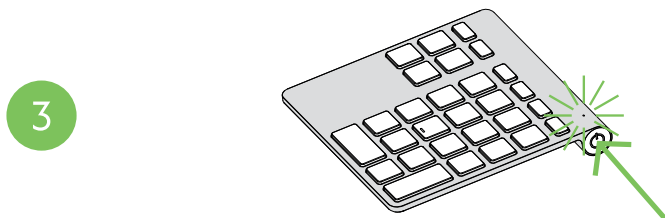
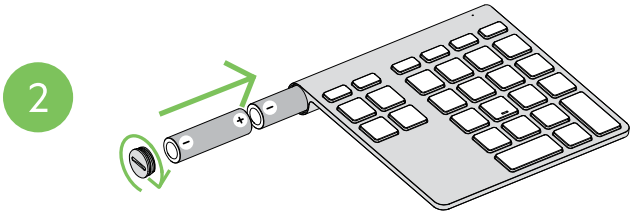
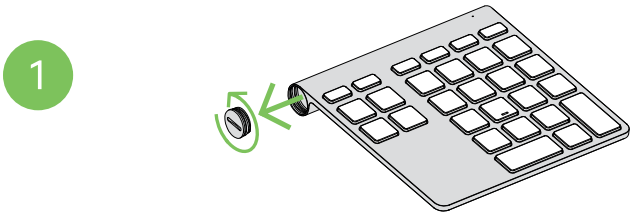
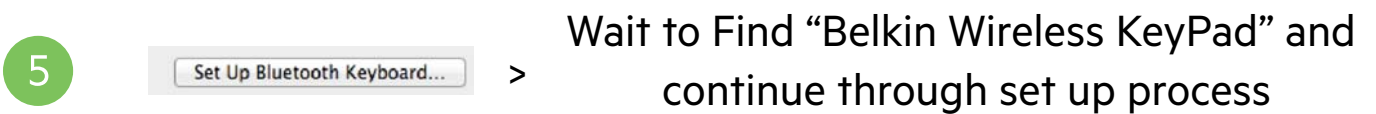


Quick Start Guide graphics for Belkin Wireless Keypad  
IDG 06/12/13 ods



OR use  
Go to Keyboard Preferences  
(and translate)



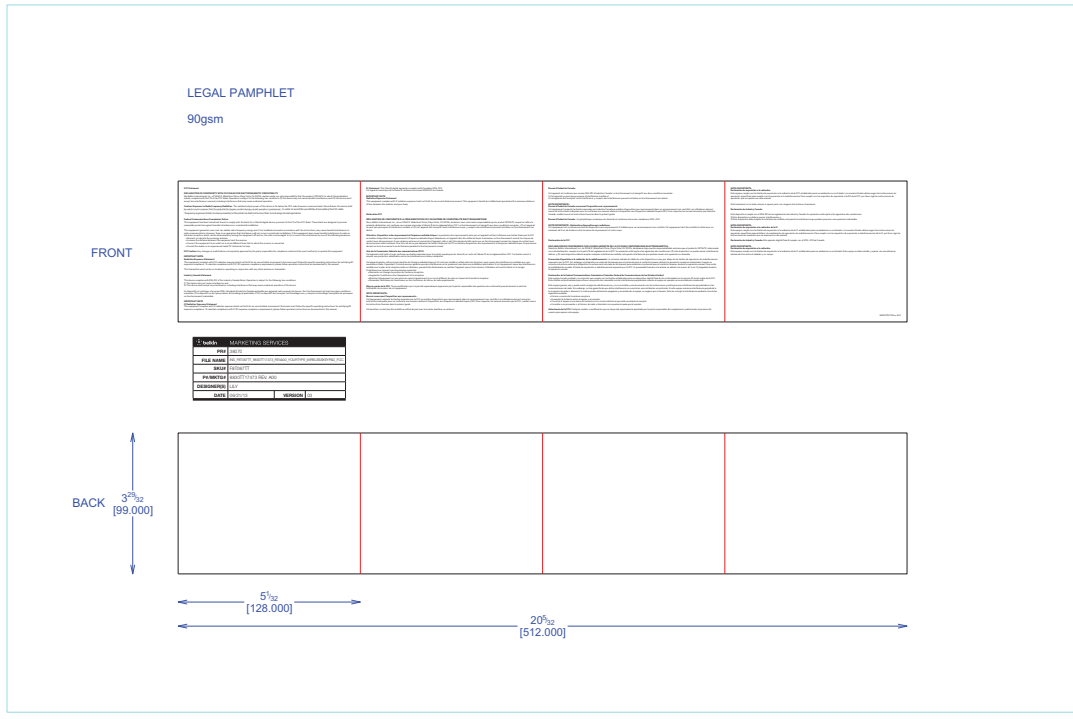


Die Line File: IDL\_F8T067\_APPLE BLUETOOTH KEYBOARD LEGAL

REV  
0 00

Artwork File:

DIE LAYOUT



Business Unit:  
Program Manager:  
Packaging Engineer: Eric MacDonald

Retail Outside Dimension (Including Hang Tab)  
L x W x D (in):  
L x W x D (mm):

DIE/MATERIAL SPECS:  
Material:  
Blank Size (in): 20.157 x 10.866  
Blank Size (mm): 512 x 276

This dieline works for following skus (if any):

Unit: IN/MM  
Side Show: PRINT SIDE  
Flute/Grain: horizontal  
Tolerance: +/- 1/32" - 0.8mm  
Drawing Scale 1:1

RELEASE DATE: 06/18/2013

DIELINE:  
**Intermediate**

THIS DOCUMENT & THE INFORMATION IN IT ARE THE CONFIDENTIAL PROPERTY OF BELKIN INTERNATIONAL AND MUST NOT BE COPIED, REPRODUCED OR USED IN ANY MANNER WITHOUT THE WRITTEN CONSENT OF BELKIN CORPORATION. IT MUST BE RETURNED UPON REQUEST

PRINT SPECS:

Color Plates:

Finish:

Notes:

**DO NOT PRINT  
DIE LINES, PRINTERS NOTES**