

**BELKIN**

# Bluetooth™ Wireless Optical Mouse

*Enjoy the freedom and convenience  
of wireless computing*



 **Bluetooth™**

**User Manual**  
F8T041-B

## TABLE OF CONTENTS

Introduction . . . . .	2
Overview	
Product Features . . . . .	4
System Requirements . . . . .	6
Package Contents . . . . .	6
Mouse Specifications . . . . .	7
USB Adapter Specifications . . . . .	8
Supported Profiles . . . . .	9
Software Setup . . . . .	11
Hardware Setup . . . . .	16
Initial Configuration Wizard . . . . .	20
Connecting the Bluetooth Mouse . . . . .	23
Uninstalling the Software . . . . .	29
FAQs . . . . .	30
Battery and Safety Information . . . . .	33
Information . . . . .	35

## INTRODUCTION

Congratulations and thank you for purchasing the *Bluetooth* Wireless Optical Mouse from Belkin. This breakthrough technology makes it easier than ever to connect many of your computing and communications devices—without physical connections or cables. The *Bluetooth* Mouse gives you the accuracy and high-performance of optical input technology along with the freedom and convenience of wireless design. Please be sure to review this manual carefully, to ensure that you take advantage of all the features and capabilities of your new *Bluetooth* Mouse.

*Please Note: References made to the Bluetooth USB Adapter are to equipment included with our Bluetooth Mouse, part number F8T041-B. The Bluetooth USB Adapter lets you easily add Bluetooth capabilities to your USB computer.*



## OVERVIEW

### Benefits

- Offers the convenience of the wireless *Bluetooth* interface
  - Delivers the accurate response of optical technology
  - Features comfortable, ergonomic design
  - Navigates easily using scroll wheel with blue LED indicator
  - Works at distances of up to 10 meters (33 ft.)
  - Installs and operates easily
  - Includes *Bluetooth* USB Adapter that allows you to connect up to 7 *Bluetooth* devices at one time
- \*\* Our *Bluetooth* Mouse, Belkin part number F8T041-B, includes our *Bluetooth* USB Adapter (Belkin part number F8T005x).

## OVERVIEW

### Product Features

The *Bluetooth* Mouse is compliant with *Bluetooth* standard version 1.1 and provides:

- Compliance with *Bluetooth* specification v1.1 devices
- 800dpi optical mouse technology for accuracy
- Side button acts as a browser and Windows back button
- Scroll wheel
- Operating distance of up to 10 meters
- Ergonomic design

## OVERVIEW

The *Bluetooth* USB Adapter is compliant with *Bluetooth* standard version 1.1 and provides:

- Compliance with *Bluetooth* specification v1.1 devices
- USB bus powering; no external power supply necessary
- Support for Microsoft® Windows® 98 SE, Me, 2000, and XP
- Operating distance of up to 10 meters
- Point-to-multipoint connections
- Support for data rates up to 721Kbps
- Built-in security, including up to 128-bit encryption and authentication
- Compatibility with USB desktop and notebook computers

## OVERVIEW

### System Requirements

- PC-compatible computer, CPU speed 200MHz or above
- Memory: 64MB or above, 128MB recommended
- One available USB port, USB 1.1 standard
- Windows 98 SE, Me, 2000, or XP

### Package Contents

- *Bluetooth* Wireless Optical Mouse
- *Bluetooth* USB Adapter
- USB base with 6 ft. extension
- CD-ROM for installation and documentation
- User Manual
- Quick Installation Guide
- 2 AA Batteries
- Registration Card

## OVERVIEW

### Mouse Specifications

<i>Bluetooth</i> Compliance	Version 1.1 Compatible to <i>Bluetooth</i> HID Profile 0.95c
Operating Frequency:	2.4 to 2.4835GHz
Output Power:	Class II (<4 dBm) RF
Operation Range:	10m (33 ft.) radius indoors
Antenna:	Integrated
Mouse	
Pointing Device:	Optical, 800dpi
Buttons:	4+ scroll-wheel button Left/Right-Handed
Design:	Right
Batteries Required:	2 AA (included)
Battery Life:	25 days under normal usages 100 days standby

LED:	Blue LED indicator
Dimensions:	74 (W) x 130 (L) x 45mm (H)
Weight:	108g (without battery)
Operating Temp:	0 to 50 degrees Celsius
Storage Temp:	10 to 70 degrees Celsius
Humidity:	5~90% non-condensing
Supported Profiles:	GAP, SDP, HCRP



## OVERVIEW

### USB Adapter Specifications

*Bluetooth* Compliance Version 1.1

Physical Interface:	USB UHCI/OHCI 1.1-compliant
Operating Frequency:	2.4 to 2.4835GHz
Output Power:	0 dBm, Class 2
Sensitivity:	<0.1% BER@ -80 dBm
Data Rate:	723/57.6Kbps
Operating Range:	10m radius indoors
Network Topology:	Point-to-Multipoint
Packet Support:	1/3/5 Slots Packet
Operation:	Master/Slave
Frequency Stability:	+/- 10PPM
LED Indicator:	Power On/Pairing/Low
Battery	
Antenna Type:	Internal

Dimensions:	57 (L) x 24 (W) x 10mm (H)
Weight:	0.3oz. (8.5g)
Operating Temp:	0 to 70 degrees Celsius
Storage Temp:	-30 to 85 degrees Celsius
Humidity:	10-90% (non-condensing)
Supply Voltage:	5.0VDC (USB)
Nominal Current:	100mA
Support Profiles:	Service Discovery, File Transfer, LAN Access, Serial Port, DUN, Generic Object Exchange, Business Card, Push, Pull & Exchange, Fax, Synchronization, PAN, HCRP, Audio Gateway, Headset, Human Interface Device
OS Support:	Windows 98 SE, Me, 2000, and XP

*Specifications subject to change without notice.*

## OVERVIEW

### Supported Profiles

The services supported by your USB Adapter are defined as “Profiles”. Available profiles include:

- Generic Access\*
- Service Discovery\*
- Serial Port
- LAN Access
- Dial-Up Networking
- Generic Object Exchange
- Object Push
- File Transfer
- Synchronization
- Fax
- Personal Area Network
- Human Interface Device\*
- Audio Gateway
- Hardcopy Cable Replacement

*\*Supported by Bluetooth Mouse*

## OVERVIEW

### Supported Profiles

Your USB Adapter gives you the ability to do the following—without cables:

- Transfer files
- Access dial-up networks
- Connect to local area networks
- Perform an ActiveSync® session
- Connect to serial ports
- Exchange PIM data
- Send or exchange business cards
- Connect to input devices

The basic functions of the *Bluetooth* Neighborhood include:

- Device Discovery
- Service Discovery
- Establishing links with remote devices

## SOFTWARE SETUP

### Installing the USB Adapter

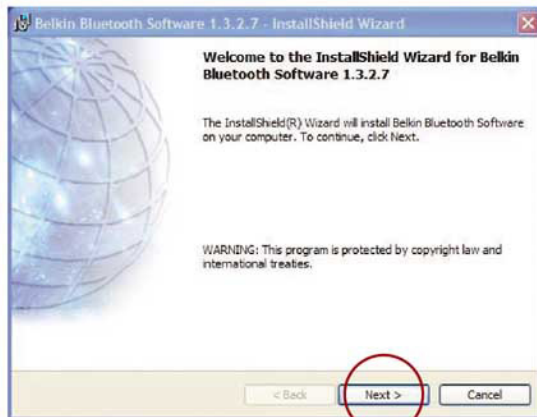
Software Setup for Windows 98 SE, Me, 2000, and XP

To install the software for the USB Adapter, follow the instructions below:

The installation process for Windows XP may look slightly different from Windows 98 SE, Me, and 2000.

*Note: Do not insert the USB Adapter into the USB port prior to installation.*

1. Insert the software installation CD into the PC's CD-ROM drive.
2. The "Software InstallShield Wizard" window appears. Click on "Next" to begin the installation process.



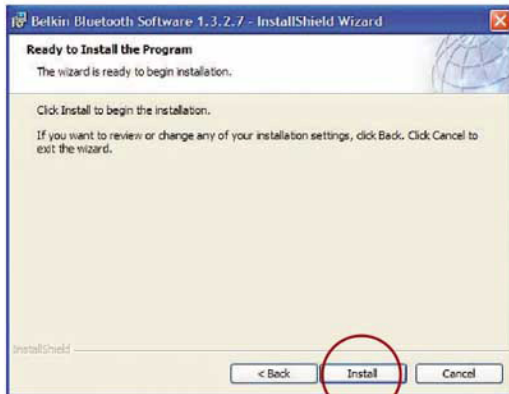
## SOFTWARE SETUP

3. Choose "I accept the terms in the license agreement" to accept the license agreement. Click on "Next" to continue.
4. Specify the location where the software files will be installed on your hard drive. It is recommended that you install the software in the default directory "C:\Program Files\Belkin\Bluetooth\Software\". Click on "Next" to continue.



## SOFTWARE SETUP

5. Confirm that the device software is ready to be installed and click on “Install”.
6. The InstallShield Wizard will begin to install the *Bluetooth* software. This may take several minutes.



## SOFTWARE SETUP

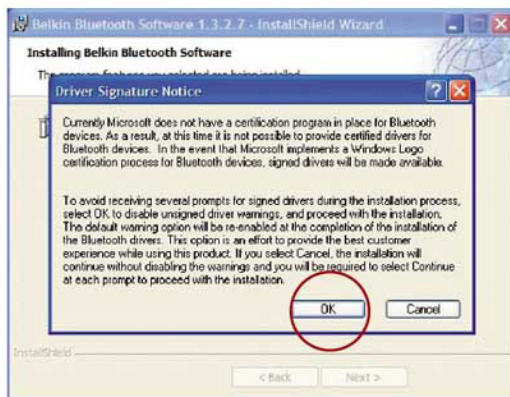
7. During the installation process, you may be prompted to insert your *Bluetooth* USB Adapter. If your Adapter is not plugged into your computer at this time, you may insert it into an available USB 1.1-compliant port on your desktop or notebook, then click “OK” to continue. Click on “Cancel” to continue installation without the *Bluetooth* device inserted. Refer to the “Hardware Setup” section on page 16 for detailed instructions on connecting the USB Adapter to your computer.



## SOFTWARE SETUP

*Note: If at any time during the installation process you receive a “Driver Signature Notice”, click “OK” to continue the installation process.*

8. Confirm the completion of the software installation; click “Finish” and restart the system if prompted to do so.





## HARDWARE SETUP

### USB Adapter

You must connect the *Bluetooth* USB Adapter to an available Universal Serial Bus (USB) port on your computer.

*Note: Your USB Adapter is sensitive to static electricity, which can damage its delicate electrical components. Electrostatic charges can be acquired simply by dry weather conditions or they can occur when you walk across carpeted floors. To protect your device, always touch the metal chassis of your computer before handling the USB Adapter, or any internal computer component. This will ground a potential electrostatic discharge. Avoid touching the metal connector when handling the USB Adapter.*

There are two ways to connect your USB Adapter:

1. Connect the USB Adapter directly to an available USB A-type connector on your desktop or notebook computer.
2. Connect the USB Adapter to the included USB base stand, and then connect the other end of the cable to an available USB A-type connector on your desktop or notebook computer. This is recommended for desktop computers.

## HARDWARE SETUP

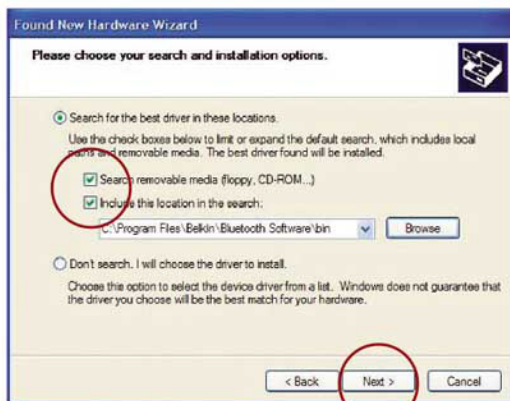
### Hardware Setup for Windows 98 SE, Me, 2000, and XP

1. Once you have connected the USB Adapter, your system will display a “New USB device found” dialog box. Follow the prompts to install drivers for your Adapter.
2. Choose “Install from a list or Specific location”; then click “Next”.



## HARDWARE SETUP

3. Browse for the location of the device driver “C:\Program Files\Belkin\Bluetooth\Software\bin\” then click “Next”.
4. If you receive the following “Hardware installation notice”, click on “Continue Anyway” to continue with the installation process.



## HARDWARE SETUP

5. A window will appear that confirms the completion of the hardware installation; click on "Finish" to complete the installation process.

