

(C) Belkin Corp  
0100-00108-C00

▲ E171525 BS-6

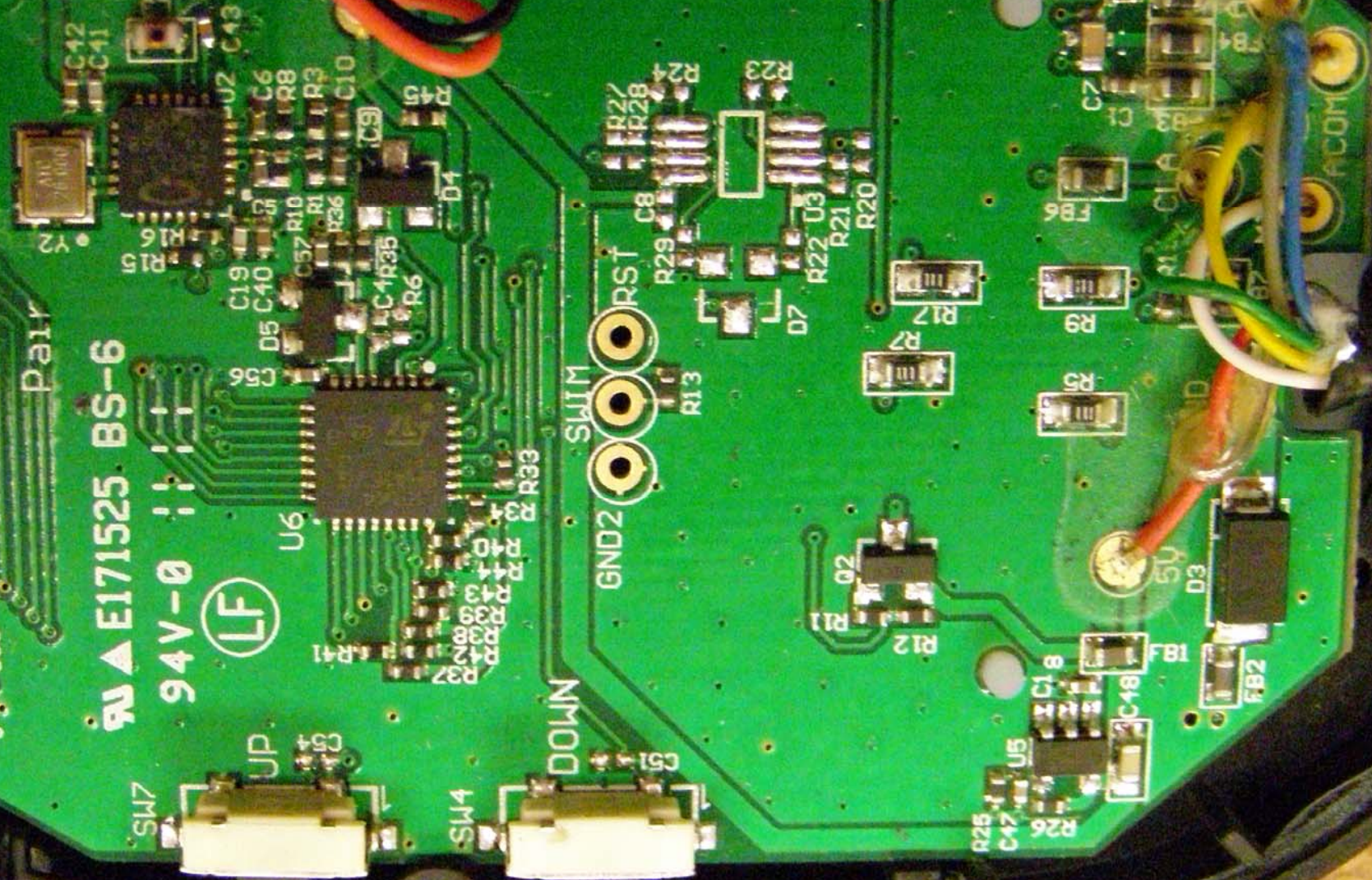
94V-0

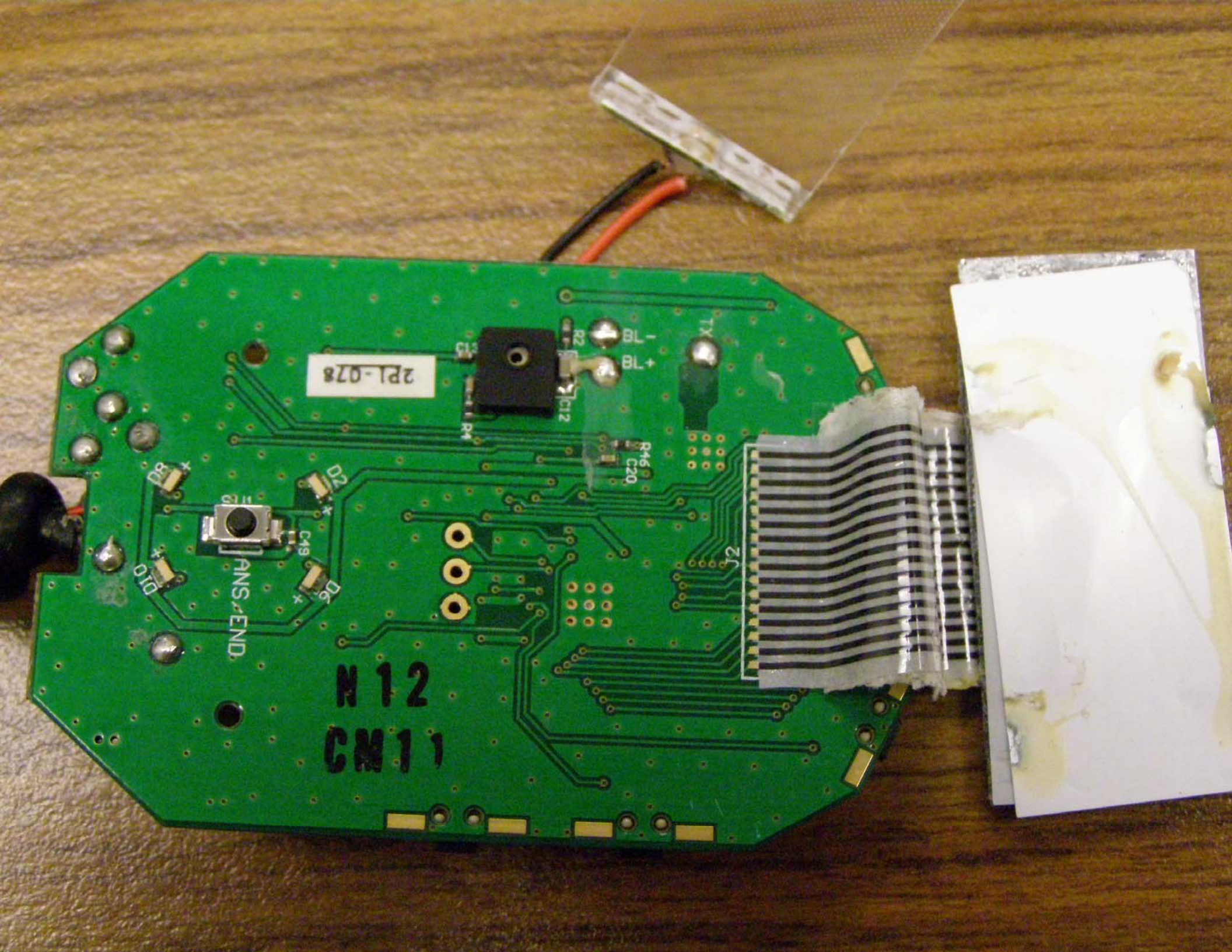


UP  
DOWN  
SCAN  
SMS  
M1  
M2

SWIM  
GND2  
RST

ACOM





2PL-078

C12

R46  
C20

ANS-END

N 12  
CM 11

D2

D10

D6

+

+

+

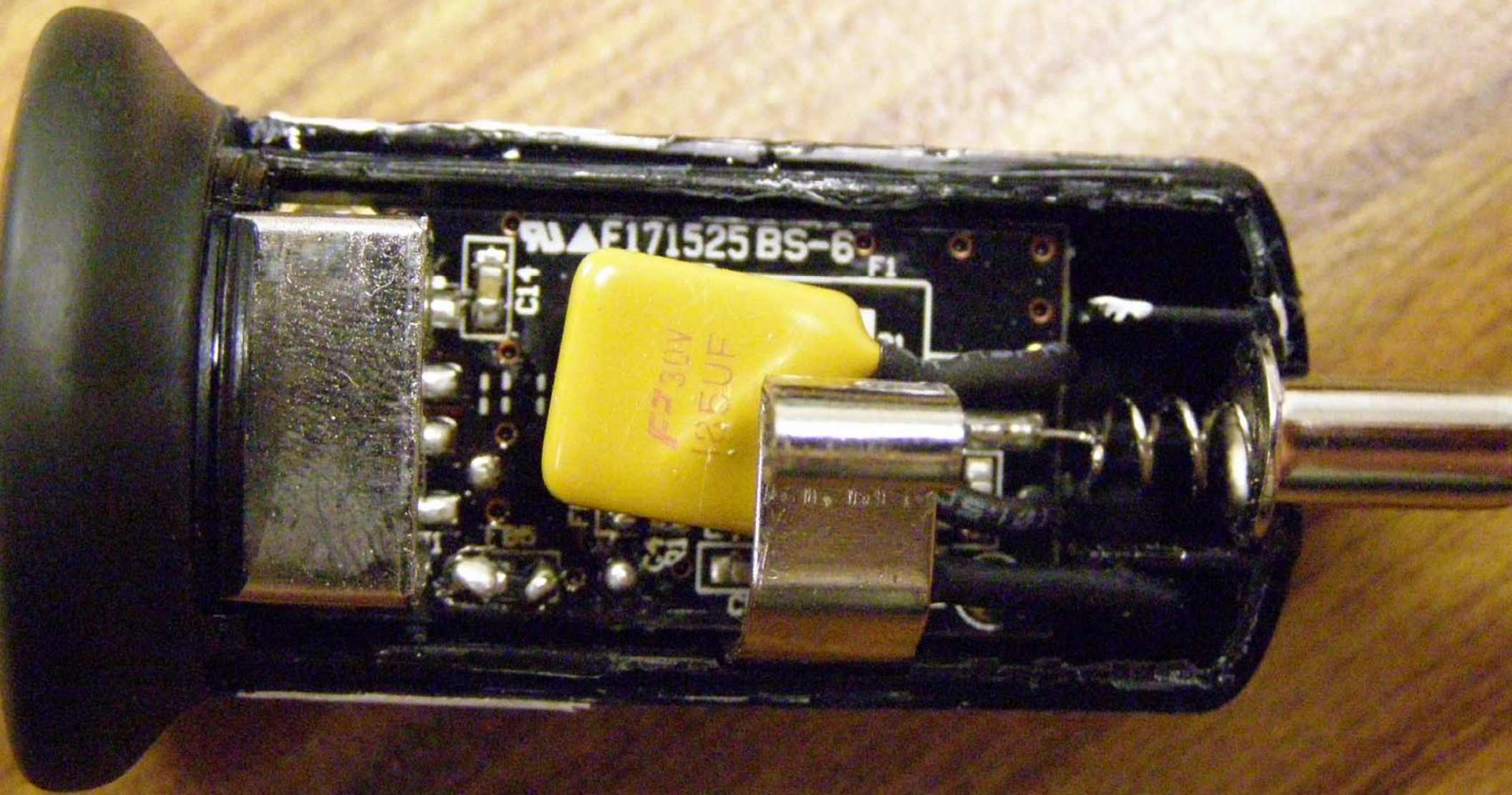
C2

TX

7B -

7B +



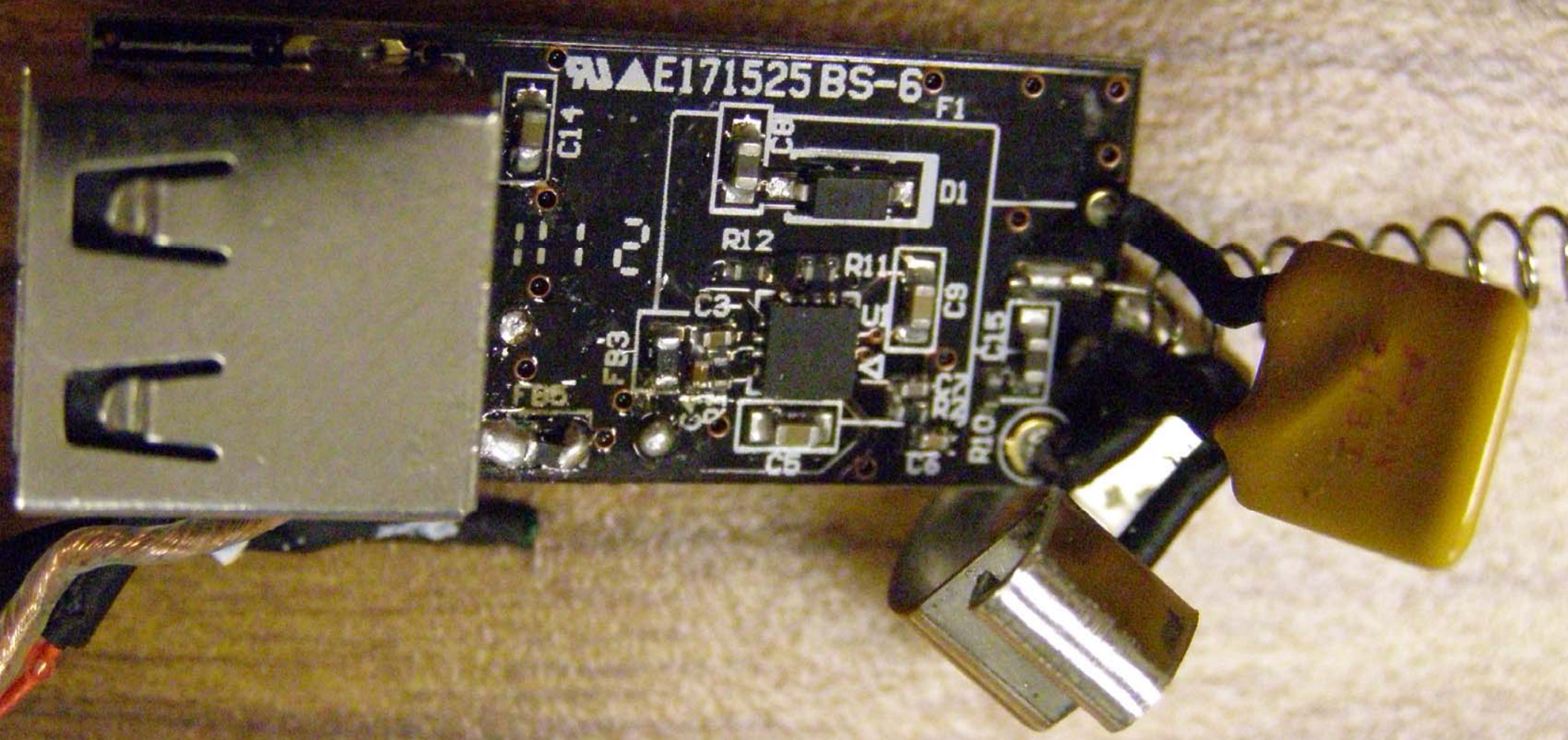


F171525 BS-6

F1

F230W  
185UF

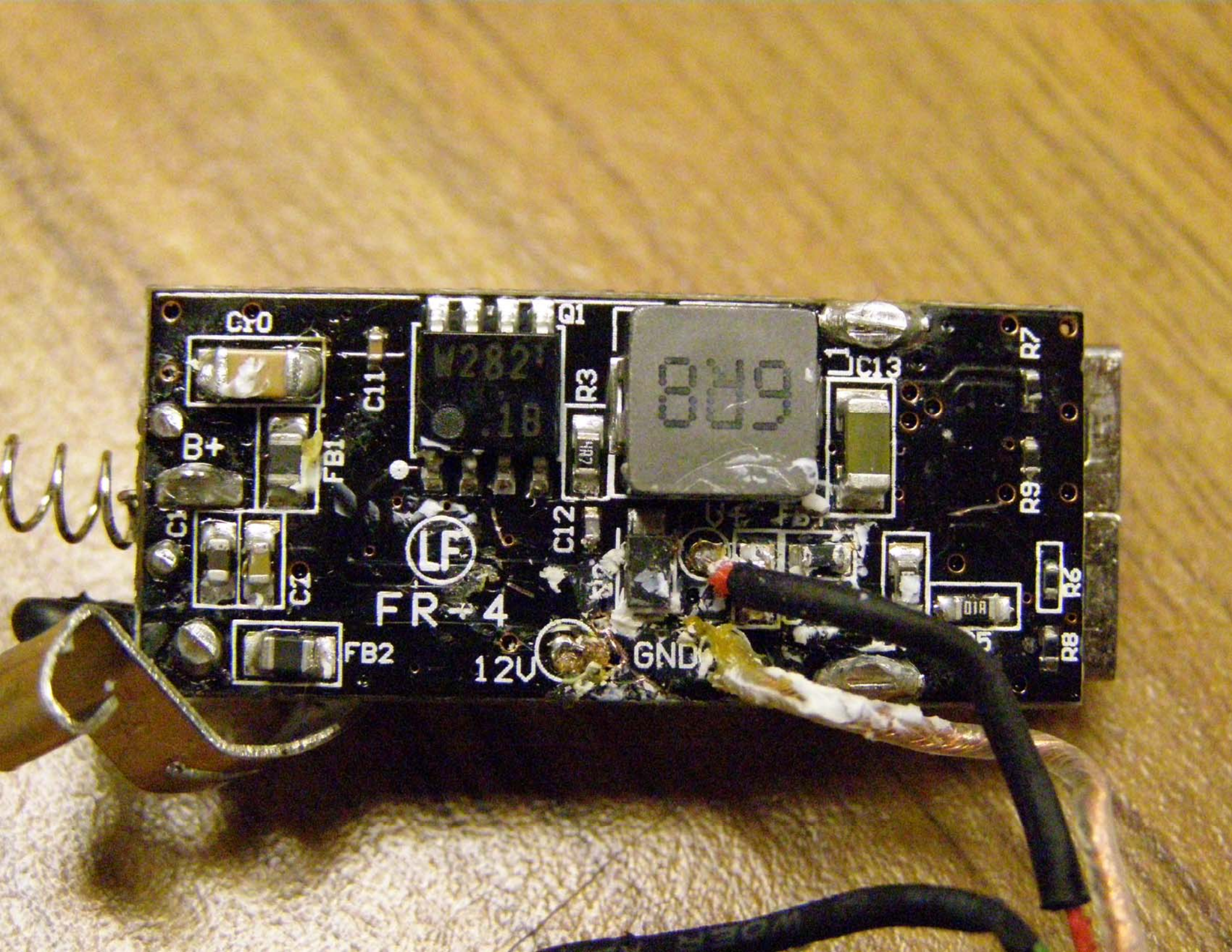
C11



▲E171525 BS-6

AAA

C14  
F1  
D1  
R12  
R11  
C9  
C3  
C5  
C6  
R10  
C15



C10

B+

FB1

C11

LF

FR-4

C1

C2

FB2

12V

GND

C12

R3

Q1

V2821  
18

0020

U1

C13

R7

R9

R6

R8

01A

5