

FDM066 new Main PCB
Ver. 2.01
2014-04-25



E124943
94V-0

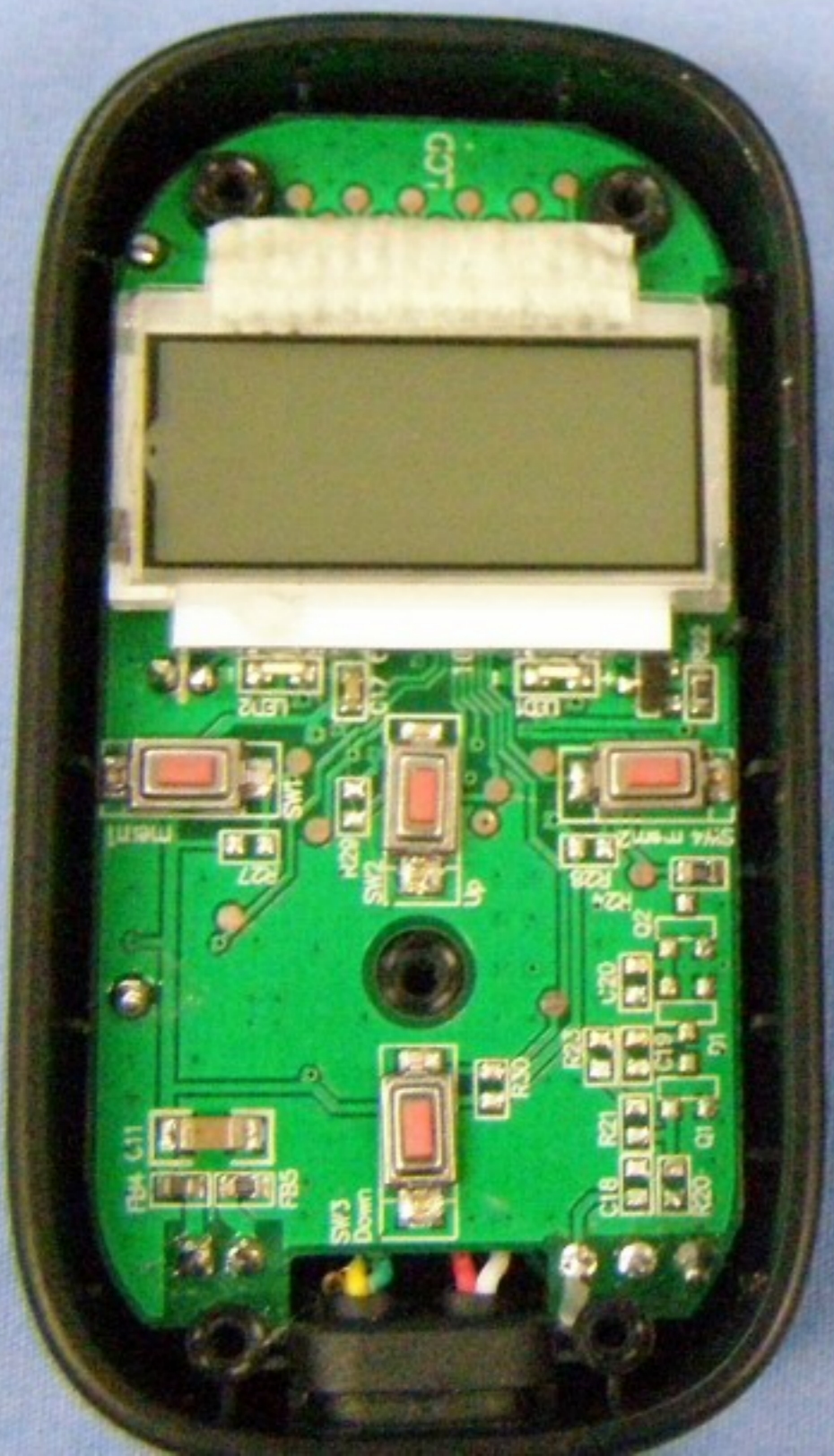
Sheenway

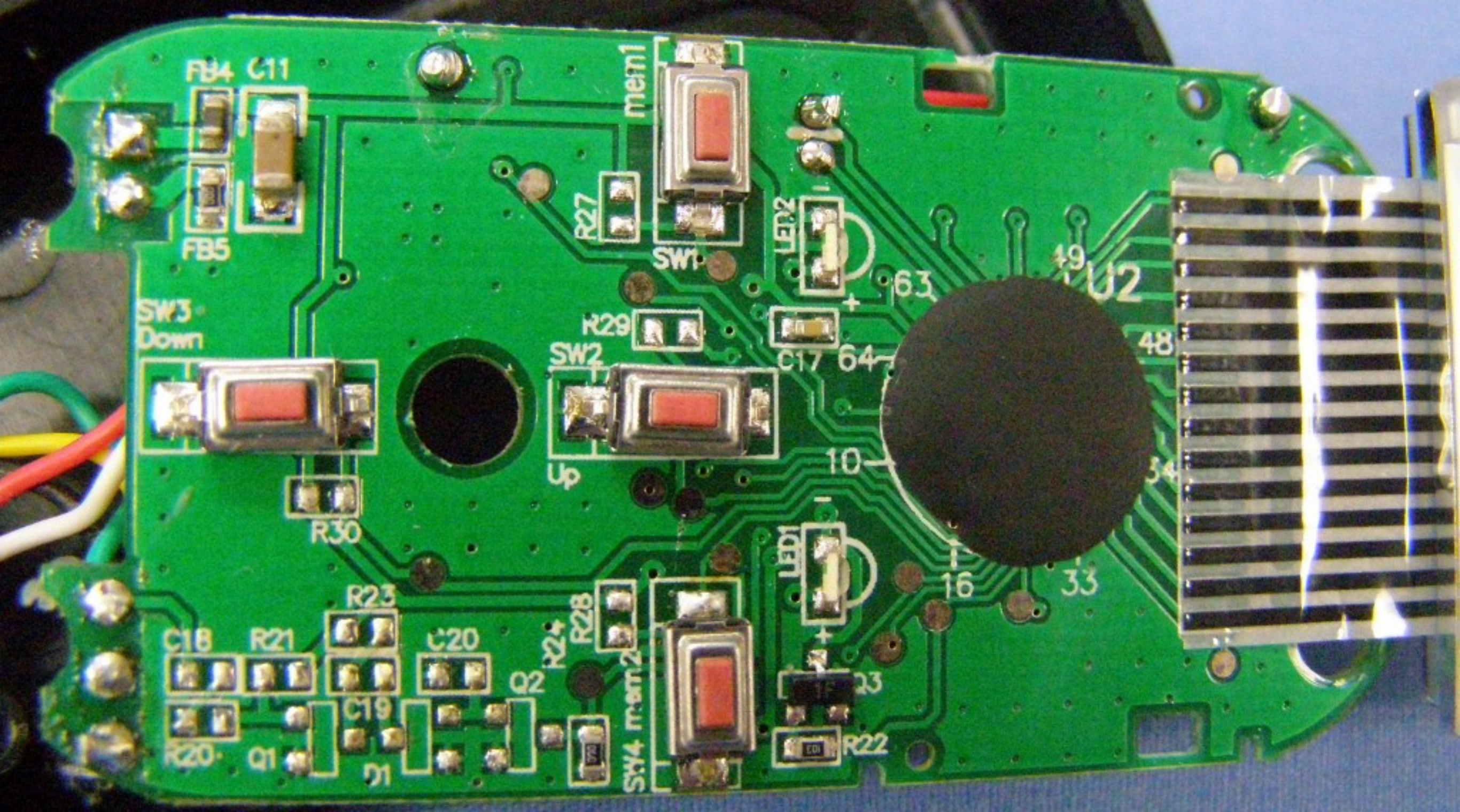
14 10

TP1
TP2
TP3
TP4
TP5
TP6
TP7

The PCB features several integrated circuits and components. U1 is a large black chip in the upper right. U3 is a smaller chip at the bottom center. Y1 and Y2 are crystal oscillators. A series of capacitors (C1-C22) and resistors (R1-R19) are distributed across the board. Test points TP1 through TP7 are arranged in a vertical column. A red wire is connected to the ANT pad at the top. A multi-pin connector JP2 is on the right side. A circular cutout is present in the center of the board. The bottom right corner has a GND pad.

GND





FB4 C11

FB5

SW3
Down

mem1

SW1

LED2

U2

SW2

Up

R30

R23

C18

R21

C20

Q2

R24

R28

SW4 mem2

LED1

R20

Q1

C19

71

R25

72

E01

R22

73

63

C17 64

10

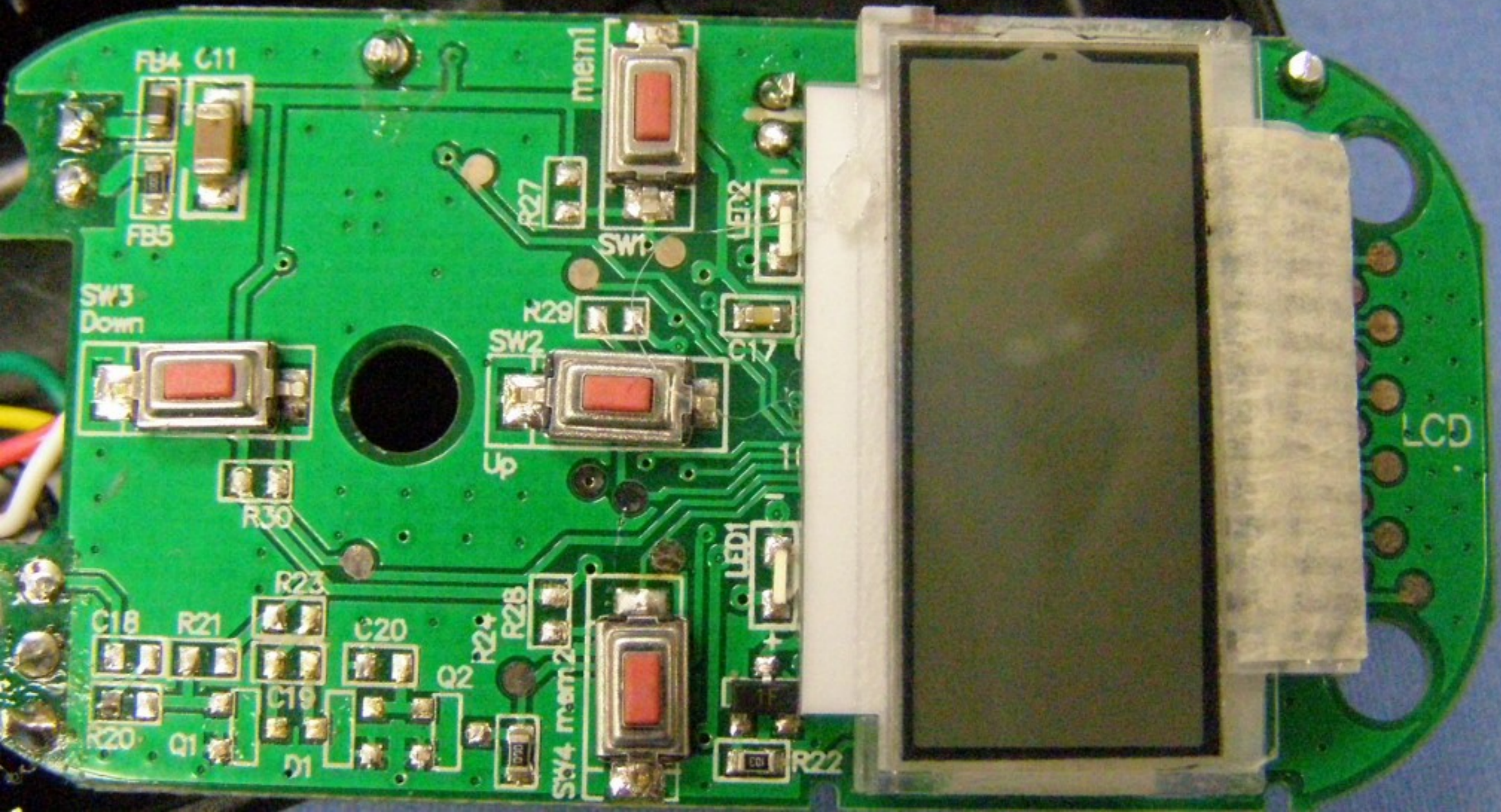
16

33

48

54

49



FB4 C11

FB5

SW3
Down

mem1

R27

SW1

LED2

R29

SW2

C17

Up

R30

LED1

R23

C18

R21

C20

Q2

R24

R28

SW4 mem 2

C19

Q1

D1

R20

R22

LCD