

# BELKIN®

## Wireless G Plus MIMO Router

# BELKIN®

[www.belkin.com](http://www.belkin.com)

### **Belkin Tech Support**

US: 877-736-5771

310-898-1100 ext. 2263

Europe: 00 800 223 55 460

Australia: 1800 235 546

New Zealand: 0800 235 546

Singapore: 800 616 1790

### **Belkin Corporation**

501 West Walnut Street

Los Angeles, CA 90220, USA

310-898-1100

310-898-1111 fax

### **Belkin Ltd.**

Express Business Park, Shipton Way

Rushden, NN10 6GL, United Kingdom

+44 (0) 1933 35 2000

+44 (0) 1933 31 2000 fax

### **Belkin Ltd.**

7 Bowen Crescent, West Gosford

NSW 2250, Australia

+61 (0) 2 4372 8600

+61 (0) 2 4372 8603 fax

### **Belkin B.V.**

Boeing Avenue 333

1119 PH Schiphol-Rijk, The Netherlands

+31 (0) 20 654 7300

+31 (0) 20 654 7349 fax

© 2006 Belkin Corporation. All rights reserved. All trade names are registered trademarks of respective manufacturers listed. The mark Wi-Fi is a registered mark of the Wi-Fi Alliance. The "Wi-Fi CERTIFIED" logo is a certification mark of the Wi-Fi Alliance. Mac, Mac OS, Apple, and AirPort are trademarks of Apple Computer, Inc., registered in the U.S. and other countries.

P74880

**BELKIN®**

# Wireless G Plus MIMO Router

**Share your broadband Internet connection**



**User Manual**



# Table of Contents

---

<b>1 Introduction</b>	
Advantages of a Wireless Network . . . . .	1
Placement of your Wireless G Plus MIMO Router . . . . .	2
<b>2 Product Overview</b> . . . . .	6
Product Features . . . . .	6
<b>3 Knowing your Router</b> . . . . .	9
Package Contents . . . . .	9
System Requirements . . . . .	9
Easy Install Wizard Software System Requirements . . . . .	9
<b>4 Connecting and Configuring your Router</b> . . . . .	16
<b>5 Alternate Setup Method</b> . . . . .	24
<b>6 Using the Web-Based Advanced User Interface</b> . . . . .	42
Changing LAN Settings . . . . .	43
Viewing the DHCP Client List Page . . . . .	45
Configuring the Wireless Network Settings . . . . .	46
Setting WPA Security . . . . .	52
Setting WEP Encryption . . . . .	53
Using the Access Point Mode . . . . .	56
Setting MAC Address Control . . . . .	57
Configuring the Firewall . . . . .	59
Using Dynamic DNS . . . . .	63
Utilities . . . . .	65
Restarting the Router . . . . .	66
Updating the Firmware . . . . .	71
<b>7 Manually Configuring Network Settings</b> . . . . .	79
<b>8 Recommended Web Browser Settings</b> . . . . .	84
<b>9 Troubleshooting</b> . . . . .	86
<b>10 Information</b> . . . . .	103

# Introduction

---

Thank you for purchasing the Belkin Wireless G Plus MIMO Router (the Router). Following are two short sections—the first discusses the benefits of home networking, and the other outlines best practices that maximize your wireless home network range and performance. Please be sure to read through this User Manual completely, and pay special attention to the section entitled “Placement of your Wireless Networking Hardware for Optimal Performance” on the next page. By following our simple setup instructions you will be able to use your Belkin Home Network to:

- Share one high-speed Internet connection with all the computers in your home
- Share resources, such as files and hard drives among all the connected computers in your home
- Share a single printer with the entire family
- Share documents, music, video, and digital pictures
- Store, retrieve, and copy files from one computer to another
- Simultaneously play games online, check Internet email, and chat

## Advantages of a Wireless Network

**Mobility** – you’ll no longer need a dedicated “computer room”—now you can work on a networked laptop or desktop computer anywhere within your wireless range

**Easy installation** – Belkin’s Easy Installation Wizard makes setup simple

**Flexibility** – set up and access printers, computers, and other networking devices from anywhere in your home

**Easy Expansion** – the wide range of Belkin networking products let you expand your network to include devices such as printers and gaming consoles

**No cabling required** – you can spare the expense and hassle of retrofitting Ethernet cabling throughout the home or office

**Widespread industry acceptance** – choose from a wide range of interoperable networking products

## Placement of your Wireless G Plus MIMO Router

### Important Factors for Placement and Setup

Your wireless connection will be stronger the closer your computer is to your Router (or access point). Typical indoor operating range for wireless devices is between 100 and 200 feet.

In the same way, your wireless connection and performance will degrade somewhat as the distance between your Router (or access point) and connected devices increases. This may or may not be noticeable to you. As you move farther from your Router (or access point), connection speed may decrease. Factors that can weaken signals simply by getting in the way of your network's radio waves are metal appliances or obstructions, and walls.

If you have concerns about your network's performance that might be related to range or obstruction factors, try moving the computer to a position between five and 10 feet from the Router (or access point) in order to see if distance is the problem. If difficulties persist even at close range, please contact Belkin Technical Support.

**Note:** While some of the items listed below can affect network performance, they will not prohibit your wireless network from functioning; if you are concerned that your network is not operating at its maximum effectiveness, this checklist may help.

### 1. Wireless Router (or Access Point) Placement

Place your Router (or access point), the central connection point of your network, as close as possible to the center of your wireless network devices.

To achieve the best wireless network coverage for your "wireless clients" (i.e., computers enabled by Belkin Wireless Notebook Network Cards, Wireless Desktop Network Cards, and Wireless USB Adapters):

- Ensure that your Router's (or access point's) networking antennas are parallel to each other, and are positioned vertically (toward the ceiling). If your Router (or access point) itself is positioned vertically, point the antennas as much as possible in an upward direction.
- In multistory homes, place the Router (or access point) on a floor that is as close to the center of the home as possible. This may mean placing the Router (or access point) on an upper floor.

- Try not to place the Router (or access point) near a cordless 2.4GHz phone.

## 2. Avoid Obstacles and Interference

Avoid placing your Router (or access point) near devices that may emit radio “noise,” such as microwave ovens. Dense objects that can inhibit wireless communication include:

- Refrigerators
- Washers and/or dryers
- Metal cabinets
- Large aquariums
- Metallic-based UV tinted windows

If your wireless signal seems weak in some spots, make sure that objects such as these are not blocking the signal’s path (between your computers and Router or access point)

## 3. Cordless Phones

If the performance of your wireless network is impaired after attending to the above issues, and you have a cordless phone:

- Try moving cordless phones away from your Router (or access point) and your wireless-enabled computers.
- Unplug and remove the battery from any cordless phone that operates on the 2.4GHz band (check manufacturer’s information). If this fixes the problem, your phone may be interfering.
- If your phone supports channel selection, change the channel on the phone to the farthest channel from your wireless network. For example, change the phone to channel 1 and move your Router (or access point) to channel 11. See your phone’s user manual for detailed instructions.
- If necessary, consider switching to a 900MHz or 5GHz cordless phone.

## 4. Choose the “Quietest” Channel for your Wireless Network

In locations where homes or offices are close together, such as apartment buildings or office complexes, there may be wireless networks nearby that can conflict with yours.

Use the Site Survey capabilities found in the Wireless Utility of your wireless adapter to locate any other wireless networks that

are available (see your wireless adapter's user manual), and move your Router (or access point) and computers to a channel as far away from other networks as possible.

- Experiment with more than one of the available channels, in order to find the clearest connection and avoid interference from neighboring cordless phones or other wireless devices.
- For Belkin wireless networking products, use the detailed Site Survey and wireless channel information included with your wireless network card. See your network card's user guide for more information.

These guidelines should allow you to cover the maximum possible area with your Router (or access point). Should you need to cover an even wider area, we suggest the Belkin Wireless Range Extender/Access Point.

## 5. Secure Connections, VPNs, and AOL

Secure connections typically require a user name and password, and are used where security is important. Secure connections include:

- Virtual Private Network (VPN) connections, often used to connect remotely to an office network
- The "Bring Your Own Access" program from America Online (AOL), which lets you use AOL through broadband provided by another cable or DSL service
- Most online banking websites
- Many commercial websites that require a user name and password to access your account

Secure connections can be interrupted by a computer's power management setting, which causes it to "go to sleep." The simplest solution to avoid this is to simply reconnect by rerunning the VPN or AOL software, or by re-logging into the secure website.

A second alternative is to change your computer's power management settings so it does not go to sleep; however, this may not be appropriate for portable computers. To change your power management setting under Windows, see the "Power Options" item in the Control Panel.

# Introduction

---

For more information regarding our networking products, visit our website at [www.belkin.com/networking](http://www.belkin.com/networking) or call Belkin Technical Support at:

**USA:** 877-736-5771  
310-898-1100 ext. 2263

**Europe:** 00 800 223 55 460

**Australia:** 1800 235 546

**New Zealand:** 0800 235 546

**Singapore:** 800 616 1790

1	section
2	
3	
4	
5	
6	
7	
8	
9	
10	



# Product Overview

---

## **Product Features**

In minutes you will be able to share your Internet connection and network your computers. The following is a list of features that make your new Belkin Wireless G Plus MIMO Router an ideal solution for your home or small office network.

## **Works with Both PCs and Mac® Computers**

The Router supports a variety of networking environments including Mac OS® 8.x, 9.x, X v10.x, Linux®, Windows® 98, Me, NT®, 2000, and XP, and others. All that is needed is an Internet browser and a network adapter that supports TCP/IP (the standard language of the Internet).

## **Front-Panel LED Display**

Lighted LEDs on the front of the Router indicate which functions are in operation. You'll know at-a-glance whether your Router is connected to the Internet. This feature eliminates the need for advanced software and status-monitoring procedures.

## **Web-Based Advanced User Interface**

You can set up the Router's advanced functions easily through your web browser, without having to install additional software onto the computer. There are no disks to install or keep track of and, best of all, you can make changes and perform setup functions from any computer on the network quickly and easily.

## **NAT IP Address Sharing**

Your Router employs Network Address Translation (NAT) to share the single IP address assigned to you by your Internet Service Provider while saving the cost of adding additional IP addresses to your Internet service account.

## **SPI Firewall**

Your Router is equipped with a firewall that will protect your network from a wide array of common hacker attacks including IP Spoofing, Land Attack, Ping of Death (PoD), Denial of Service (DoS), IP with zero length, Smurf Attack, TCP Null Scan, SYN flood, UDP flooding, Tear Drop Attack, ICMP defect, RIP defect, and fragment flooding.

# Product Overview

---

1	
2	section
3	
4	
5	
6	
7	
8	
9	
10	

## Integrated 10/100 4-Port Switch

The Router has a built-in, four-port network switch to allow your wired computers to share printers, data and MP3 files, digital photos, and much more. The switch features automatic detection so it will adjust to the speed of connected devices. The switch will transfer data between computers and the Internet simultaneously without interrupting or consuming resources.

## Universal Plug and Play (UPnP)

UPnP is a technology that offers seamless operation of voice messaging, video messaging, games, and other applications that are UPnP-compliant.

## Support for VPN Pass-Through

If you connect to your office network from home using a VPN connection, your Router will allow your VPN-equipped computer to pass through the Router and to your office network.

## Built-In Dynamic Host Configuration Protocol (DHCP)

Built-In Dynamic Host Configuration Protocol (DHCP) on-board makes for the easiest possible connection of a network. The DHCP server will assign IP addresses to each computer automatically so there is no need for a complicated networking setup.

## Easy Install Wizard

The Easy Install Wizard takes the guesswork out of setting up your Router. This automatic software determines your network settings for you and sets up the Router for connection to your Internet Service Provider (ISP). In a matter of minutes, your Router will be up and running on the Internet.

**Note:** Easy Install Wizard software is compatible with Windows 98SE, Me, 2000, XP, and Mac OS X. If you are using another operating system, the Router can be set up using the Alternate Setup Method described in this User Manual (see page 24).

# Product Overview

---

## **Integrated G Plus MIMO Wireless Access Point**

G Plus MIMO is an exciting new wireless technology that achieves data rates up to 54Mbps. Actual throughput is typically lower than the connected data rate and will vary depending on your networking environment.

## **MAC Address Filtering**

For added security, you can set up a list of MAC addresses (unique client identifiers) that are allowed access to your network. Every computer has its own MAC address. Simply enter these MAC addresses into a list using the Web-Based Advanced User Interface and you can control access to your network.

# Knowing your Router

---

1

2

3

section

4

5

6

7

8

9

10

## Package Contents

- Belkin Wireless G Plus MIMO Router
- Quick Installation Guide
- Belkin Easy Install Wizard Software CD
- Belkin RJ45 Ethernet Networking Cable
- Power Supply
- User Manual

## System Requirements

- Broadband Internet connection such as a cable or DSL modem with RJ45 (Ethernet) connection
- At least one computer with an installed network interface adapter
- TCP/IP networking protocol installed on each computer
- RJ45 Ethernet networking cable
- Internet browser

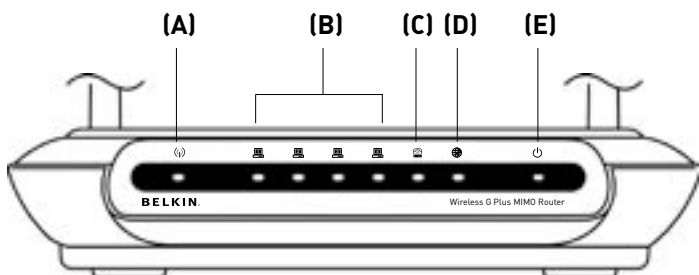
## Easy Install Wizard Software System Requirements

- A PC running Windows® 98SE, Me, 2000, or XP, or a Mac® computer running Mac OS® X
- Minimum 64MB RAM
- Internet browser

# Knowing your Router

---

The Router has been designed to be placed on a desktop. All of the cables exit from the rear of the Router for better organization and utility. The LED indicators are easily visible on the TOP of the Router to provide you with information about network activity and status.



## A. Wireless Network LED

OFF	Wireless network is OFF
Green	Wireless network is ready
Blinking	Indicates wireless activity

## B. Wired Computer Status LEDs

These LEDs are labeled 1–4 and correspond to the numbered ports on the rear of the Router. When a computer is properly connected to one of the wired computer ports on the rear of the Router, the LED will light. When information is being sent over the port, the LED blinks rapidly.

OFF	No device is linked to the port
Green	10Base-T device connected
Blinking	Port activity

## C. Modem/WAN Status LED

This LED lights in GREEN to indicate that your modem is connected properly to the Router. It blinks rapidly when information is being sent over the port between the Router and the modem.

OFF	No WAN link
Solid Green	Good WAN link
Blinking Green	WAN activity

## D. Internet/Connected LED

This unique LED shows you when the Router is connected to the Internet. When the light is OFF, the Router is NOT connected to the Internet. When the light is blinking, the Router is attempting to connect to the Internet. When the light is solid GREEN, the Router is connected to the Internet. When using the “Disconnect after x minutes” feature, this LED becomes extremely useful in monitoring the status of your Router’s connection.

OFF	Router is not connected to the Internet
Blinking Green	Router is attempting to connect to the Internet
Solid Green	Router is connected to the Internet

## E. Power/Ready LED

When you apply power to the Router or restart it, a short period of time elapses while the Router boots up. During this time, the “Power/Ready” LED blinks. When the Router has completely booted up, the “Power/Ready” LED becomes a SOLID light, indicating the Router is ready for use.

OFF	Router is OFF
Blinking Green	Router is booting up
Solid Green	Router is ready

1

2

3

4

5

6

7

8

9

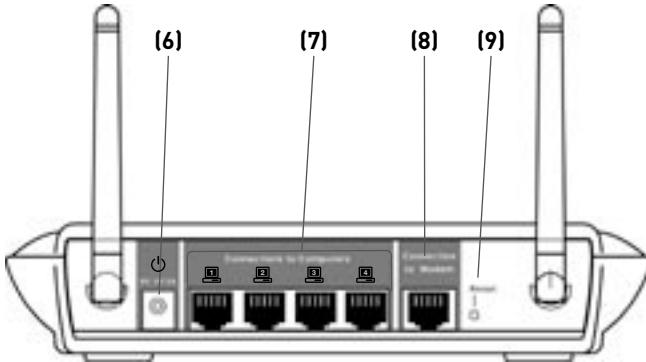
10



# Knowing your Router

---

## Rear Panel



**F. Power Jack – GRAY**

Connect the included 12V/0.5A DC power supply to this jack.

**G. Connections to Computers (Wired Computer Ports) – YELLOW**

Connect your wired (non-wireless) computers to these ports. These ports are RJ45, 10/100 auto-negotiation, auto-uplinking ports for standard UTP category 5 or 6 Ethernet cable. The ports are labeled 1 through 4. These ports correspond to the numbered LEDs on the front of the Router.

**H. Connection to Modem (Modem Port) – BLUE**

This port is for connection to your cable or DSL modem. Use the cable that was provided with the modem to connect the modem to this port. Use of a cable other than the cable supplied with the cable modem may not work properly.

## I. **Reset Button**

The “Reset” button is used in rare cases when the Router may function improperly. Resetting the Router will restore the Router’s normal operation while maintaining the programmed settings. You can also restore the factory default settings by using the “Reset” button. Use the restore option in instances where you may have forgotten your custom password.

### **(a) Resetting the Router**

Push and release the “Reset” button. The lights on the Router will momentarily flash. The “Power/Ready” light will begin to blink. When the “Power/Ready” light becomes solid again, the reset is complete.

### **(b) Restoring the Factory Defaults**

Press and hold the “Reset” button for at least 10 seconds, then release it. The lights on the Router will momentarily flash. The “Power/Ready” light will begin to blink. When the “Power/Ready” light becomes solid again, the restore is complete.

1

2

3

4

5

6

7

8

9

10

# Connecting and Configuring your Router

---

## Verify the contents of your box. You should have the following:

- Belkin Wireless G Plus MIMO Router
- Category 5 Networking Cable (for connecting the Router to the computer)
- Power Supply
- Belkin Easy Install Wizard Software CD
- User Manual

## Modem Requirements

Your cable or DSL modem must be equipped with an RJ45 Ethernet port. Many modems have both an RJ45 Ethernet port and a USB connection. If you have a modem with both Ethernet and USB, and are using the USB connection at this time, you will be instructed to use the RJ45 Ethernet port during the installation procedure. If your modem has only a USB port, you can request a different type of modem from your ISP, or you can, in some cases, purchase a modem that has an RJ45 Ethernet port on it.



**Ethernet**



**USB**

## Easy Install Wizard

Belkin has provided our Easy Install Wizard software to make installing your Router a simple and easy task. You can use it to get your Router up and running in minutes. The Easy Install Wizard requires that your Windows 98SE, Me, 2000, or XP computer be connected directly to your cable or DSL modem and that the Internet connection is **active and working** at the time of installation. If it is not, you must use the “Alternate Setup Method” section of this User Manual to configure your Router. Additionally, if you are using an operating system other than Windows 98SE, Me, 2000, or XP, you must set up the Router using the “Alternate Setup Method” section of this User Manual.

# Connecting and Configuring your Router

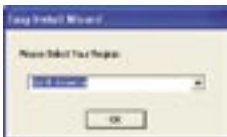
## Step 1 | Run the Easy Install Wizard Software

- 1 Shut down any programs that are running on your computer at this time.
- 2 Make sure you have the following items at the computer that is now directly connected to the cable or DSL modem. **DO NOT CONNECT THE ROUTER AT THIS TIME.**
  - The Easy Install Wizard CD-ROM
  - The Router
  - The Router Power Supply
  - Category 5 Networking Cable
  - This User Manual
- 3 Turn off any firewall or Internet-connection-sharing software on your computer.



**Windows User:** Insert the Easy Install Wizard software CD into your CD-ROM drive. The Network Setup Utility screen will automatically appear on your screen within 15 seconds. Click on “Run the Easy Install Wizard” to begin.

Select your region from the drop-down box shown on the screen.



**Note for Windows Users:** If the Easy Install Wizard does not start up automatically, select your CD-ROM drive from “My Computer” and double-click on the file named “Start” to start the Network Setup Utility.

1

2

3

4

5

6

7

8

9

10

section

# Connecting and Configuring your Router

---

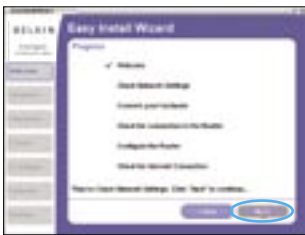
**Mac OS Users:** Insert the Easy Install Wizard software CD into your CD-ROM drive. Click on the CD icon; a folder will pop up. To begin, click on “start.osx” if you have Mac OS X.

4. Follow the Easy Install Wizard to complete the installation.



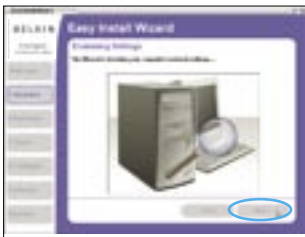
## Welcome Screen

After you insert the CD into your CD-ROM drive, the Wizard’s welcome screen will appear. Make sure you have not connected the Router at this point. If you have connected your Router, please reconnect your computer directly to the modem. Click “Next” when you are ready to move on.



## Progress Screen

Easy Install will show you a progress screen each time a step in the setup has been completed. Each time you see the progress screen, click “Next” when you are ready to move to the next step.

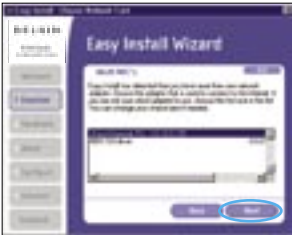


## 1.1 Examining Settings

The Wizard will now examine your computer’s network settings and gather information needed to complete the Router’s connection to the Internet. When the Wizard is finished examining your computer, click “Next” to continue.

## 1.2 Multi-NICs Screen

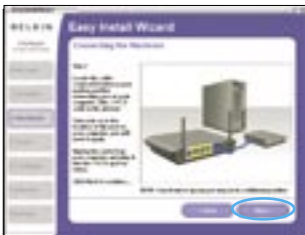
This screen will appear ONLY if you have more than one network adapter installed in your computer. If you have more than one network adapter installed in your computer, the Wizard will need to know which adapter is connected to your modem. Select the network card that is connected to your modem from the list and click “Next”. If you are not sure which adapter to choose, select the adapter at the top of the list. If you mistakenly choose the wrong adapter now, you will be able to choose a different one later.



### Step 2

## Hardware Setup – Connect the Router to your Modem and computer

The Wizard will walk you through connecting your Router to your computer and modem. Follow the steps on the screen using the pictures as a guide.



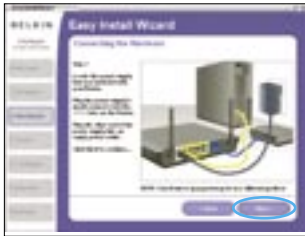
- 2.1 This step instructs you to locate the cable connected between your modem and the networking port on your computer. Unplug this cable from the computer and plug it into the BLUE port on the Router. Click “Next” to continue.

# Connecting and Configuring your Router

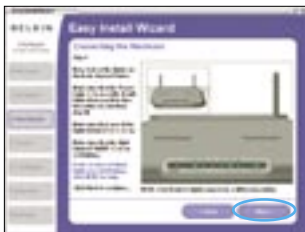
---



- 2.2** This step instructs you to locate the YELLOW cable that is included with your Router. Plug one end of this cable into ANY one of the YELLOW ports on your Router. Plug the other end of the cable into the networking port on your computer. Click “Next” to continue.



- 2.3** This step instructs you to locate the power supply that is included with your Router. Plug the power supply’s small connector into the GRAY port on the Router. Plug the power supply into an empty power outlet. Click “Next” to continue.



- 2.4** This step instructs you to look at the lights on the front of your Router. Make sure the appropriate lights are ON. Refer to the Easy Install Wizard software on your computer’s screen for more details. Click “Next” to continue.

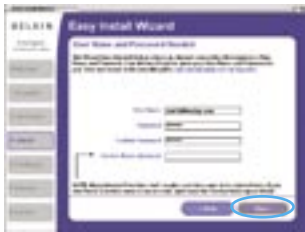
## Step 3 | Checking the Connection



**3.1** Once you have completed connecting the Router, the Wizard will check the connection to the Router then go on to determine what type of Internet connection you have.

### 3.2 User Name and Password Needed

If you have a connection type that requires a user name and a password, the Wizard will ask you to type in your user name and password. If your connection type does not require a user name and password, you will not see this screen.



Your user name and password is provided to you by your Internet Service Provider. If you have to type in a user name and password to connect to the Internet, then type that same user name and password in here. Your user name looks something like “jsmith@myisp.com” or simply “jsmith”. The service name is optional and is very rarely required by your ISP. If you don’t know your service name, leave this blank. When you have entered your information, click “Next” to move on.

1

2

3

4

5

6

7

8

9

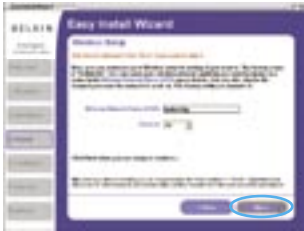
10

section



# Connecting and Configuring your Router

---



## 3.3 Wireless Setup

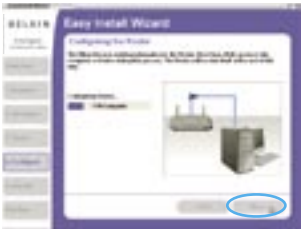
**This Step Is Optional.** Click “Next” if you want to skip it.

Using this step, you can customize your wireless network settings if you want to. Follow the steps on the screen to complete this step. Click “Next” to continue.

## Step 4 | Configuring the Router

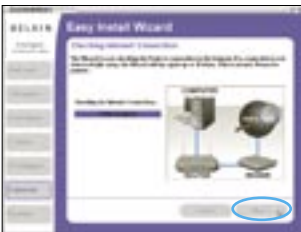
---

The Wizard will now transfer all of the configuration information to the Router. This will take approximately one minute. During this time, do not turn off the Router or computer. The Router will restart itself at the end of this step.



## 4.1 Checking Internet

The Wizard will now check for an Internet connection. This can take a few minutes. The Wizard may not detect a connection right away. If not, it will retry a number of times. The “Connected” light on the front panel of the Router will flash during this time. Please be patient through this process.





## 4.2 Finished

When the Internet connection is complete, the Wizard will tell you that you are finished. The “Connected” LED on the front of the Router will be solid GREEN, indicating that the Router is now connected to the Internet.

**Your Router is now connected to the Internet.** Now you can begin surfing the Internet by opening your browser and going to your favorite web page.

**Congratulations!** You have finished installing your new Belkin Router. You are ready to set up the other computers in your home. You can also add computers to your Router any time you want.

1

2

3

4

5

6

7

8

9

10

# Alternate Setup Method

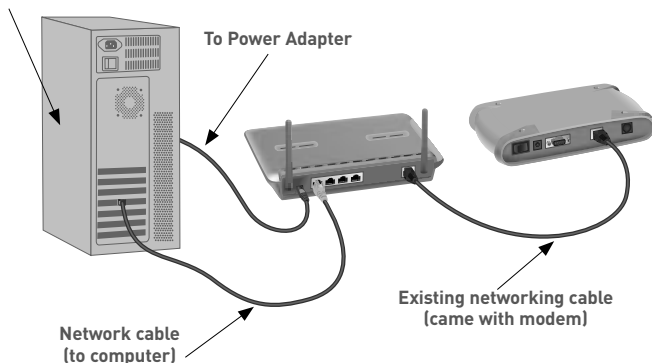
---

## Step 1 | Connecting your Gateway Router

---

- 1.1 Turn off the power to your modem by unplugging the power supply from the modem.
- 1.2 Locate the network cable that is connected between your modem and your computer and unplug it from your computer, leaving the other end connected to your modem.
- 1.3 Plug the loose end of the cable you just unplugged into the port on the back of the Router labeled "Internet/WAN".
- 1.4 Connect a new network cable (not included) from the back of the computer to one of the ports labeled "1-4". Note: It does not matter which numbered port you choose.
- 1.5 Turn your cable or DSL modem on by reconnecting the power supply to the modem.
- 1.6 Before plugging the power cord into the Router, plug the cord into the wall, then plug the cord into the Router's power jack.

Mac or PC computer that was originally connected to the cable or DSL modem



# Alternate Setup Method

---

- 1.7 Verify that your modem is connected to the Router by checking the lights on the TOP of the Router. The green light labeled “WAN” should be ON if your modem is connected correctly to the Router. If it is not, recheck your connections.
- 1.8 Verify that your computer is connected properly to the Router by checking the lights labeled “LAN 1,2,3,4”. The light which corresponds to the numbered port connected to your computer should be ON, if your computer is connected properly. If it is not, recheck your connections.

## Step 2: **Step 2: Set your Computer’s Network Settings to Work with a DHCP Server**

See the section in this User Manual called “Manually Configuring Network Settings” for directions.

## Step 3: **Configuring the Router Using the Web-Based Advanced User Interface**

Using your Internet browser, you can access the Router’s Web-Based Advanced User Interface. In your browser, type “192.168.2.1” (do not type in anything else such as “http://” or “www”). Then press the “Enter” key.



1

2

3

4

**5**

6

7

8

9

10

section

# Alternate Setup Method

---

## Logging into the Router

You will see the Router's home page in your browser window. The home page is visible to any user who wants to see it. To make any changes to the Router's settings, you have to log in. Clicking the "Login" button or clicking on any one of the links on the home page will take you to the login screen. The Router ships with no password entered. In the login screen, leave the password blank and click the "Submit" button to log in.



Login

Before you can change any settings, you need to log in with a password. If you have not yet set a custom password, then leave this field blank and click "Submit."

Password

Default = leave blank

Clear Submit

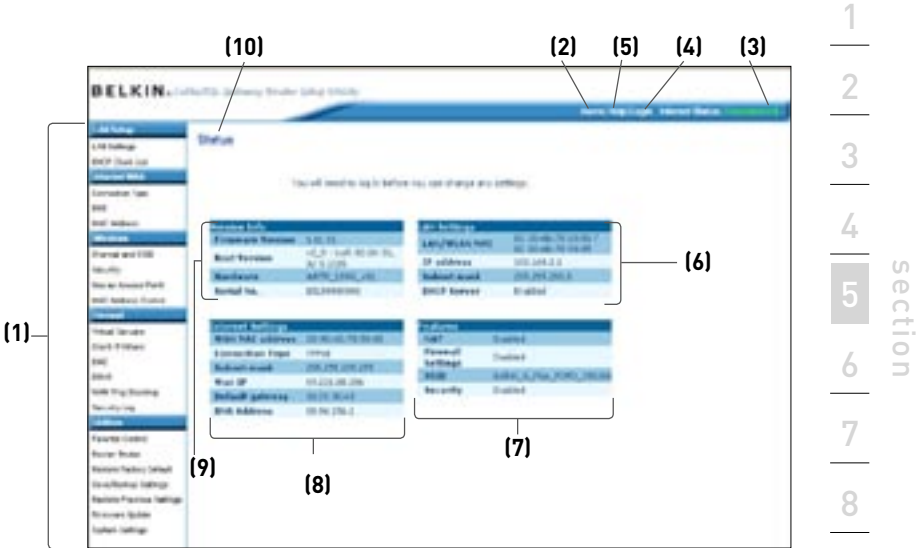
## Logging out of the Router

One computer at a time can log into the Router for the purposes of making changes to the settings of the Router. Once a user has logged in to make changes, there are two ways that the computer can be logged out. Clicking the "Logout" button will log the computer out. The second method is automatic. The login will time out after a specified period of time. The default login time-out is 10 minutes. This can be changed from one to 99 minutes. For more information, see the section in this manual titled "Changing the Login Time-Out Setting".

## Understanding the Web-Based Advanced User Interface

The home page is the first page you will see when you access the Advanced User Interface (UI). The home page shows you a quick view of the Router's status and settings. All advanced setup pages can be reached from this page.

# Alternate Setup Method



## 1. Quick-Navigation Links

You can go directly to any of the Router's advanced UI pages by clicking directly on these links. The links are divided into logical categories and grouped by tabs to make finding a particular setting easier to find. Clicking on the purple header of each tab will show you a short description of the tab's function.

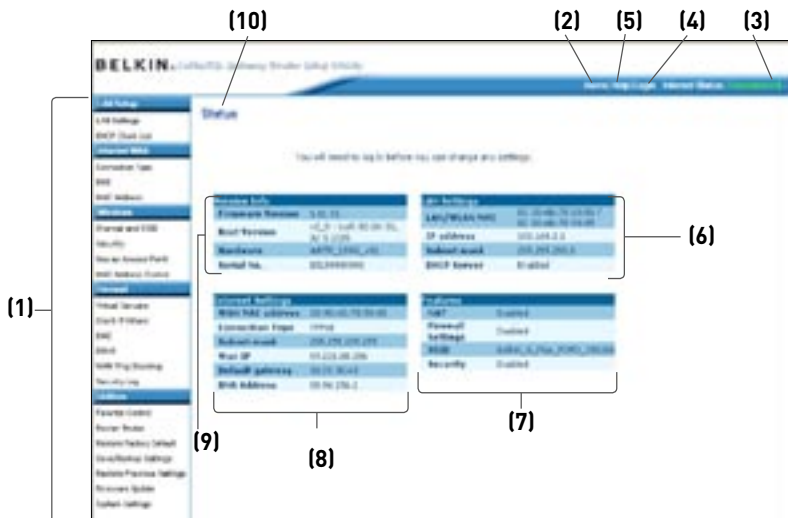
## 2. Home Button

The home button is available in every page of the UI. Pressing this button will take you back to the home page.

## 3. Internet Status Indicator

This indicator is visible in all pages of the Router, indicating the connection status of the Router. When the indicator says "Connection OK" in GREEN, the Router is connected to the Internet. When the Router is not connected to the Internet, the indicator will read "no connection" in RED. The indicator is automatically updated when you make changes to the settings of the Router.

# Alternate Setup Method



## 4. Login/Logout Button

This button enables you to log in and out of the Router with the press of one button. When you are logged into the Router, this button will change to read “Logout”. Logging into the Router will take you to a separate login page where you will need to enter a password. When you are logged in to the Router, you can make changes to the settings. When you are finished making changes, you can log out of the Router by clicking the “Logout” button. For more information about logging into the Router, see the section called “Logging into the Router”.

## 5. Help Button

The “Help” button gives you access to the Router’s help pages. Help is also available on many pages by clicking “more info” next to certain sections of each page.

## 6. LAN Settings

Shows you the settings of the Local Area Network (LAN) side of the Router. Changes can be made to the settings by clicking on any one of the links (IP Address, Subnet Mask, DHCP Server) or by clicking the “LAN” Quick Navigation link on the left side of the screen.

## 7. Features

Shows the status of the Router’s NAT, firewall, and wireless features. Changes can be made to the settings by clicking on any one of the links or by clicking the “Quick Navigation” links on the left side of the screen.

## 8. Internet Settings

Shows the settings of the Internet/WAN side of the Router that connects to the Internet. Changes to any of these settings can be made by clicking on the links or by clicking on the “Internet/WAN” Quick Navigation link on the left side of the screen.

## 9. Version Info

Shows the firmware version, boot-code version, hardware version, and serial number of the Router.

## 10. Page Name

The page you are on can be identified by this name. This manual will sometimes refer to pages by name. For instance “LAN > LAN Settings” refers to the “LAN Settings” page.

1

2

3

4

5

6

7

8

9

10

section



# Alternate Setup Method

## Step 4 | Configuring your Router for Connection to your Internet Service Provider (ISP)

The “Internet/WAN” tab is where you will set up your Router to connect to your Internet Service Provider (ISP). The Router is capable of connecting to virtually any ISP’s system provided you have correctly configured the Router’s settings for your ISP’s connection type. Your ISP connection settings are provided to you by your ISP. To configure the Router with the settings that your ISP gave you, click “Connection Type” **(A)** on the left side of the screen. Select the connection type you use. If your ISP gave you DNS settings, clicking “DNS” **(B)** allows you to enter DNS address entries for ISPs that require specific settings. Clicking “MAC Address” **(C)** will let you clone your computer’s MAC address or type in a specific WAN MAC address, if required by your ISP. When you have finished making settings, the “Internet Status” indicator will read “Connection OK” if your Router is set up properly.



# Alternate Setup Method

## Setting your Connection Type

From the “Connection Type” page, you can select the type of connection you use. Select the type of connection you use by clicking the button **(1)** next to your connection type and then clicking “Next” **(2)**.



1  
2  
3  
4  
5  
6  
7  
8  
9  
10

section

# Alternate Setup Method

---

## Setting your Internet Service Provider (ISP) Connection Type to Dynamic IP

A dynamic connection type is the most common connection type found with cable modems. Setting the connection type to “dynamic” in many cases is enough to complete the connection to your ISP. Some dynamic connection types may require a host name. You can enter your host name in the space provided if you were assigned one. Your host name is assigned by your ISP. Some dynamic connections may require that you clone the MAC address of the PC that was originally connected to the modem.

### 1. Host Name

This space is provided to enter a host name that needs to be visible to your ISP. Enter your host name here and click “Apply Changes” **(3)**. If your ISP did not assign you a host name, or you are not sure, leave this blank.

### 2. Change WAN MAC Address

If your ISP requires a specific MAC address to connect to the service, you can enter a specific MAC address or clone the current computer’s MAC address through this link.



## Setting your Internet Service Provider (ISP) Connection Type to Static IP

A static IP address connection type is less common than other connection types. If your ISP uses static IP addressing, you will need your IP address, subnet mask, and ISP gateway address. This information is available from your ISP or on the paperwork that your ISP left with you. Type in your information, then click “Apply Changes” **(3)**. After you apply the changes, the Internet Status indicator will read “Connection OK” if your Router is set up properly.

### 1. IP Address

Provided by your ISP. Enter your IP address here.

### 2. Subnet Mask

Provided by your ISP. Enter your subnet mask here.

### 3. ISP Gateway Address

Provided by your ISP. Enter the ISP gateway address here.

### 4. My ISP Provides More Than One Static IP Address

If your ISP assigns you more than one static IP address, your Router is capable of handling up to five static WAN IP addresses. Select “My ISP provides more than one static IP address” and enter your additional addresses.



# Alternate Setup Method

---

## Setting your ISP Connection Type to PPPoE

Most DSL providers use PPPoE as the connection type. If you use a DSL modem to connect to the Internet, your ISP may use PPPoE to log you into the service. If you have an Internet connection in your home or small office that doesn't require a modem, you may also use PPPoE.



### Your connection type is PPPoE if:

1. Your ISP gave you a user name and password which is required to connect to the Internet
2. Your ISP gave you software such as WinPOET or Enternet300 that you use to connect to the Internet
3. You have to double-click on a desktop Icon other than your browser to get on the Internet

# Alternate Setup Method

---

## 1. **User Name**

This space is provided to type in your User name that was assigned by your ISP.

## 2. **Password**

Type in your password and re-type it into the “Retype Password” box to confirm it.

## 3. **Service Name**

A Service name is rarely required by an ISP. If you are not sure if your ISP requires a service name, leave this blank.

## 4. **MTU**

The MTU setting should never be changed unless your ISP gives you a specific MTU setting. Making changes to the MTU setting can cause problems with your Internet connection including disconnection from the Internet, slow Internet access and problems with Internet applications working properly.

## 5. **Disconnect after X...**

The Disconnect feature is used to automatically disconnect the router from your ISP when there is no activity for a specified period of time. For instance, placing a check mark next to this option and entering 5 into the minute field will cause the router to disconnect from the Internet after 5 minutes of no Internet activity. This option should be used if you pay for your Internet service by the minute.

1

2

3

4

5

6

7

8

9

10

section

# Alternate Setup Method

---

## Setting your Internet Service Provider (ISP) Connection Type to Point-to-Point Tunneling Protocol (PPTP)

[European Countries Only]. Some ISPs require a connection using PPTP protocol, a type of connection most common in European countries. This sets up a direct connection to the ISP's system. Type in the information provided by your ISP in the space provided. When you have finished, click "Apply Changes" **(9)**. After you apply the changes, the Internet Status indicator will read "Connection OK" if your Router is set up properly.



### 1. PPTP Account

Provided by your ISP. Enter your PPTP account name here.

### 2. PPTP Password

Type in your password and retype it into the "Retype Password" box to confirm it.

### 3. Host Name

Provided by your ISP. Enter your host name here.

### 4. Service IP Address

Provided by your ISP. Enter your service IP address here.

# Alternate Setup Method

---

## 5. **My IP Address**

Provided by your ISP. Enter the IP address here.

## 6 **My Subnet Mask**

Provided by your ISP. Enter the IP address here.

## 7. **Connection ID (optional)**

Provided by your ISP. If your ISP did not give you a connection ID, leave this blank.

## 8. **Disconnect after X...**

The Disconnect feature is used to automatically disconnect the Router from your ISP when there is no activity for a specified period of time. For instance, placing a check mark next to this option and entering "5" into the minute field will cause the Router to disconnect from the Internet after five minutes of no Internet activity. This option should be used if you pay for your Internet service by the minute.

1

2

3

4

5

6

7

8

9

10

section





### 3. Password

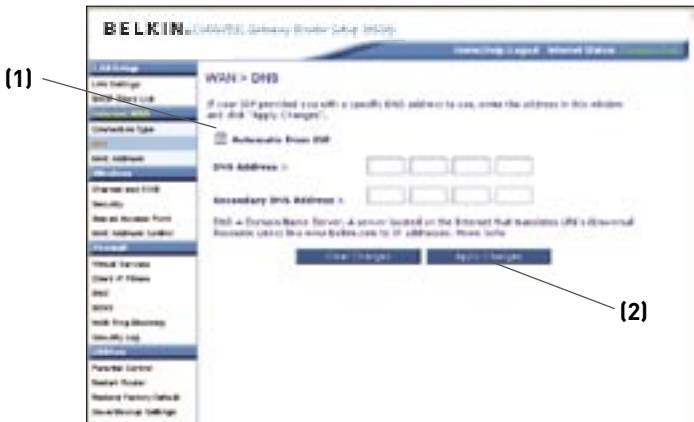
Type in your password and retype it into the “Retype Password” box to confirm it.

### 4. User Decide Login Server Manually

If your login server IP address is not available in the “Select Your State” drop-down menu **(6)**, you may manually enter the login server IP address by placing a check in the box next to “User Decide Login Server Manually” and type in the address next to “Login Server” **(5)**.

### Setting Custom Domain Name Server (DNS) Settings

A “Domain Name Server” is a server located on the Internet that translates Universal Resource Locators (URLs) like “www.belkin.com” to IP addresses. Many Internet Service Providers (ISPs) do not require you to enter this information into the Router. The “Automatic from ISP” box **(1)** should be checked if your ISP did not give you a specific DNS address. If you are using a static IP connection type, then you may need to enter a specific DNS address and secondary DNS address for your connection to work properly. If your connection type is dynamic or PPPoE, it is likely that you do not have to enter a DNS address. Leave the “Automatic from ISP” box checked. To enter the DNS address settings, uncheck the “Automatic from ISP” box and enter your DNS entries in the spaces provided. Click “Apply Changes” **(2)** to save the settings.



1

2

3

4

5

6

7

8

9

10

section

## Alternate Setup Method

---

### **Configuring your WAN Media Access Controller (MAC) Address**

All network components including cards, adapters, and routers, have a unique “serial number” called a MAC address. Your Internet Service Provider (ISP) may record the MAC address of your computer’s adapter and only let that particular computer connect to the Internet service. When you install the Router, its own MAC address will be “seen” by the ISP and may cause the connection not to work. Belkin has provided the ability to clone (copy) the MAC address of the computer into the Router. This MAC address, in turn, will be seen by the ISP’s system as the original MAC address and will allow the connection to work. If you are not sure whether your ISP needs to see the original MAC address, simply clone the MAC address of the computer that was originally connected to the modem. Cloning the address will not cause any problems with your network.

## Cloning your MAC Address

To clone your MAC address, make sure that you are using the computer that was **ORIGINALLY CONNECTED** to your modem before the Router was installed. Click the “Clone” button **(1)**. Click “Apply Changes” **(3)**. Your MAC address is now cloned to the Router.

## Entering a Specific MAC Address

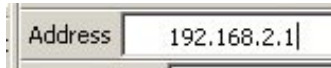
In certain circumstances you may need a specific WAN MAC address. You can manually enter one in the “MAC Address” page. Type in a MAC address in the spaces provided **(2)** and click “Apply Changes” **(3)** to save the changes. The Router’s WAN MAC address will now be changed to the MAC address you specified



# Using the Web-Based Advanced User Interface

Using your Internet browser, you can access the Router's Web-Based Advanced User Interface. In your browser, type "192.168.2.1" (do not type in anything else such as "http://" or "www") then press the "Enter" key.

You will see the Router's home page in your browser window.



## Viewing the LAN Settings

Clicking on the header of the LAN tab **(1)** will take you to the LAN tab's header page. A quick description of the functions can be found here. To view the settings or make changes to any of the LAN settings, click on "LAN Settings" **(2)** or to view the list of connected computers, click on "DHCP client list" **(3)**.



## Changing LAN Settings

All settings for the internal LAN setup of the Router can be viewed and changed here.



### 1. IP Address

The “IP address” is the internal IP address of the Router. The default IP address is “192.168.2.1”. To access the advanced setup interface, type this IP address into the address bar of your browser. This address can be changed if needed. To change the IP address, type in the new IP address and click “Apply Changes”. The IP address you choose should be a non-routable IP. Examples of a non-routable IP are:

192.168.x.x (where x is anything between 0 and 255)

10.x.x.x (where x is anything between 0 and 255)

### 2. Subnet Mask

There is no need to change the subnet mask. This is a unique, advanced feature of your Belkin Router. It is possible to change the subnet mask if necessary; however, do NOT make changes to the subnet mask unless you have a specific reason to do so. The default setting is “255.255.255.0”.

### 3. DHCP Server

The DHCP server function makes setting up a network very easy by assigning IP addresses to each computer on the network automatically. The default setting is “On”. The DHCP server can be turned OFF if necessary; however, in order to do so you must manually set a static IP address for each computer on your network. To turn off the DHCP server, select “Off” and click “Apply Changes”.

### 4. IP Pool

The range of IP addresses set aside for dynamic assignment to the computers on your network. The default is 2–100 (99 computers). If you want to change this number, you can do so by entering a new starting and ending IP address and clicking on “Apply Changes”. The DHCP server can assign 100 IP addresses automatically. This means that you cannot specify an IP address pool larger than 100 computers. For example, starting at 50 means you have to end at 150 or lower so as not to exceed the 100-client limit. The starting IP address must be lower in number than the ending IP address.

### 5. Lease Time

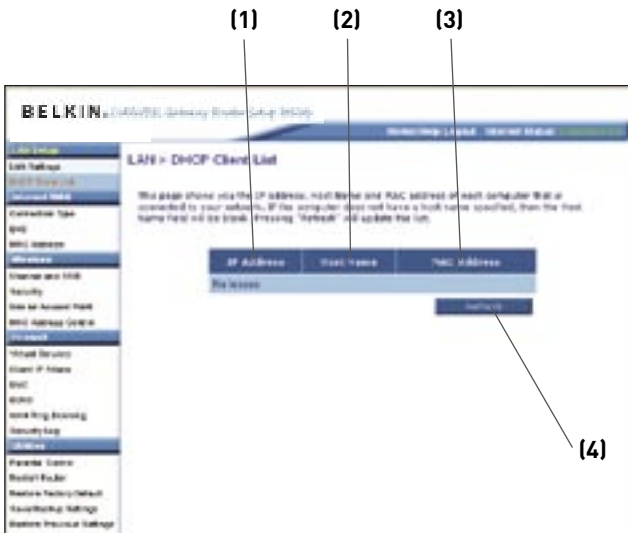
The length of time the DHCP server will reserve the IP address for each computer. We recommend that you leave the lease time set to “Forever”. The default setting is “Forever”, meaning that any time a computer is assigned an IP address by the DHCP server, the IP address will not change for that particular computer. Setting lease times for shorter intervals such as one day or one hour frees IP addresses after the specified period of time. This also means that a particular computer’s IP address may change over time. If you have set any of the other advanced features of the Router such as DMZ or client IP filters, these are dependent on the IP address. For this reason, you will not want the IP address to change.

### 6. Local Domain Name

The default setting is “Belkin”. You can set a local domain name (network name) for your network. There is no need to change this setting unless you have a specific advanced need to do so. You can name the network anything you want such as “MY NETWORK”.

## Viewing the DHCP Client List Page

You can view a list of the computers (known as clients), which are connected to your network. You are able to view the IP address **(1)** of the computer, the host name **(2)** (if the computer has been assigned one), and the MAC address **(3)** of the computer's network interface card (NIC). Pressing the "Refresh" **(4)** button will update the list. If there have been any changes, the list will be updated.





## Configuring the Wireless Network Settings

The “Wireless” tab lets you make changes to the wireless network settings. From this tab you can make changes to the wireless network name (SSID), operating channel, encryption security settings, and configure the Router to be used as an Access Point.

### Changing the Wireless Network Name (SSID)

To identify your wireless network, a name called the SSID (Service Set Identifier) is used. The SSID is your network name. The default network name of the Router is “Belkin G Plus MIMO\_” followed by six digits that are unique to your Router. Your network name will look something like “Belkin G Plus MIMO\_012345”. You can change this to anything you choose, or you can leave it unchanged. Keep in mind, if you decide to change your wireless network name, and there are other wireless networks operating in your area, your network name needs to be different from other wireless networks that may be operating in your area. To change the SSID, type in the SSID that you want to use in the SSID field **(1)** and click “Apply Changes” **(2)**. The change is immediate. If you make a change to the SSID, your wireless-equipped computers may also need to be reconfigured to connect to your new network name. Refer to the documentation of your wireless network adapter for information on making this change.



# Using the Web-Based Advanced User Interface

---

## Using the Wireless Mode Switch

This switch allows you to set the Router's wireless modes. There are three modes.

### 802.11g-Only Mode

Setting the Router to this mode will allow only G Plus MIMO and 802.11g-compliant devices to join the network, keeping out any slower 802.11b devices.

### 802.11g & 802.11b

Setting the Router to this mode will let G Plus MIMO-, 802.11g-, and 802.11b-compliant devices to join the network.

### Off

This mode will turn OFF the Router's Access Point, so no wireless devices can join the network. Turning off the wireless function of your Router is a great way to secure your network when you are away from home for a long period of time, or don't want to use the wireless feature of the Router at a certain time.

1

2

3

4

5

6

7

8

9

10

section

## Changing the Wireless Channel

There are a number of operating channels you can choose from. In the United States, there are 11 channels. In the United Kingdom and most of Europe, there are 13 channels. In a small number of other countries, there are other channel requirements. Your Router is configured to operate on the proper channels for the country you reside in. The channel can be changed if needed. If there are other wireless networks operating in your area, your network should be set to operate on a channel that is different than the other wireless networks.

## Auto Channel Selection Feature and Changing the Channel

For best performance, your Router should use a channel that is at least five channels away from the other wireless networks in the area. For instance, if another network is operating on channel 11, then set your network to channel 6 or below. The auto channel selection mode will choose the clearest channel to operate on when the Router is first powered up. Your Router ships from the factory with the auto channel feature enabled. You can manually select a channel if you wish; however, it is recommended to use the auto channel mode. To change the channel, select the channel from the drop-down list. Click “Apply Changes”. The change is immediate.



## Using the Broadcast SSID Feature

**Note:** This advanced feature should be employed by advanced users only. For security, you can choose not to broadcast your network's SSID. Doing so will keep your network name hidden from computers that are scanning for the presence of wireless networks. To turn off the broadcast of the SSID, remove the check mark from the box next to "Broadcast SSID", and then click "Apply Changes". The change is immediate. Each computer now needs to be set to connect to your specific SSID; an SSID of "ANY" will no longer be accepted. Refer to the documentation of your wireless network adapter for information on making this change.

## Protected Mode Switch

Protected mode will ensure proper operation of 802.11g devices on your G Plus MIMO network when 802.11b devices are present or when there is heavy 802.11b traffic in the operating environment. If you are using a mix of Belkin G Plus MIMO Wireless Cards and 802.11b or 802.11g cards on your network, protected mode should be used. If you are in an environment where there is no other (or very little) 802.11b wireless network traffic, best 802.11g performance may be achieved with protected mode OFF. If you are operating in an environment with HEAVY 802.11b traffic or interference, best 802.11g performance may be achieved with protected mode ON. Wireless G Plus MIMO performance is not affected by this setting.

## Changing the Wireless Security Settings

Your Router is equipped with the latest security standard called Wi-Fi Protected Access (WPA). It also supports the legacy security standard called Wired Equivalent Privacy (WEP). By default, wireless security is disabled. To enable security, you will need to determine which standard you want to use. To access the security settings, click "Security" on the "Wireless" tab.

The Router features WPA2, which is the second generation of the WPA-based 802.11i standard. It offers a higher level of wireless security by combining advanced network authentication and stronger Advanced Encryption Standard (AES) encryption methods.

## WPA2 Requirements

**IMPORTANT:** In order to use WPA2 security, all your computers and wireless client adapters must be upgraded with patches, driver, and client utility software that supported WPA2. At the time of this User Manual's publication, a couple security patches are available, for free download, from Microsoft®. These patches work only with the Windows XP operating system. Other operating systems are not supported at this time.

For Windows XP computers that do not have Service Pack 2 (SP2), a file from Microsoft called "Windows XP Support Patch for Wireless Protected Access (KB 826942)" is available for free download at <http://support.microsoft.com/?kbid=826942>

For Windows XP with Service Pack 2, Microsoft has released a free download to update the wireless client components to support WPA2 (KB893357). The update is available from:

<http://support.microsoft.com/default.aspx?scid=kb;en-us;893357>

**IMPORTANT:** You also need to ensure that all your wireless client cards/adapters support WPA2, and that you have downloaded and installed the latest driver. Most of the Belkin wireless cards have driver updates available for download from the Belkin support site: [www.belkin.com/networking](http://www.belkin.com/networking).

## Setting WPA/WPA2-Personal (PSK)

Like WPA security, WPA2 is available in both WPA2-Personal (PSK) mode and WPA2-Enterprise (RADIUS) mode. Typically, WPA2-Personal (PSK) is the mode that will be used in a home environment, while WPA2-Enterprise (RADIUS) is implemented in a business environment where an external radius server distributes the network key to the clients automatically. This guide will focus on WPA2-Personal (PSK) usage. Please refer to the User Manual for more information about wireless security and different types of wireless security.

# Using the Web-Based Advanced User Interface

1. After you've set up your Router, go to the "Security" page under "Wireless" and select "WPA/WPA2-Personal (PSK)" from the "Security Mode" drop-down menu.
2. For "Authentication", select "WPA-PSK", "WPA2-PSK", or "WPA-PSK + WPA2-PSK". This setting will have to be identical on the wireless clients that you set up. "WPA-PSK + WPA2-PSK" mode will allow the Router to support clients running either WPA or WPA2 security.
3. For "Encryption Technique", select "TKIP", "AES", or "TKIP+AES". This setting will have to be identical on the wireless clients that you set up.
4. Enter your pre-shared key (PSK). This can be from eight to 63 characters and can be letters, numbers, or symbols. This same key must be used on all of the wireless clients that you set up. For example, your PSK might be something like: "Smith family network key".
5. Click "Apply Changes" to finish. You must now set all wireless clients to match these settings.

1  
2  
3  
4  
5  
6  
7  
8  
9  
10

section



**IMPORTANT:** Make sure your wireless computers are updated to work with WPA2 and have the correct settings to get proper connection to the Router.

## Setting WPA Security

**Note:** To use WPA security, your wireless network cards must be equipped with software that supports WPA. At the time this User Manual was published, a security patch from Microsoft is available for free download. This patch works only with Windows XP.

Your Router supports WPA-PSK (no server). WPA-PSK uses what is known as a pre-shared key as the security key. A pre-shared key is basically a password that is between eight and 63 characters long. It can be a combination of letters, numbers, or characters. Each client uses the same key to access the network. Typically this is the mode that will be used in a home environment.

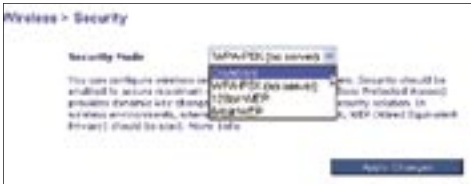
## Setting WPA-PSK

1. From the “Security Mode” drop-down menu, select “WPA-PSK (no server)”.
2. For “Encryption Technique”, select “TKIP” or “AES”. This setting will have to be identical on the clients that you set up.
3. Enter your pre-shared key. This can be from eight to 63 characters and can be letters, numbers, or symbols. This same key must be used on all of the clients that you set up.
4. Click “Apply Changes” to finish. You must now set all clients to match these settings.

## Setting WEP Encryption

**Note to Mac users:** The “Passphrase” option will not operate with Apple® AirPort®. To configure encryption for your Mac computer, set the encryption using the manual method described in the next section.

1. Select “128-bit WEP” or “64-bit WEP” from the drop-down menu.



2. After selecting your WEP encryption mode, you can enter your WEP key manually by typing in the hex WEP key manually, or you can type a passphrase in the “PassPhrase” field and click “Generate” to create a WEP key from the passphrase. Click “Apply Changes” to finish. You must now set all of your clients to match these settings.





# Using the Web-Based Advanced User Interface

---

- 3.** Encryption in the Router is now set. Each of your computers on your wireless network will now need to be configured with the same passphrase. Refer to the documentation of your wireless network adapter for information on making this change.

# Using the Web-Based Advanced User Interface

1

2

3

4

5

6

section

7

8

9

10

## Using a Hexadecimal Key

A hexadecimal key is a mixture of numbers and letters from A–F and 0–9. 64-bit keys are 10 digits long and can be divided into five two-digit numbers. 128-bit keys are 26 digits long and can be divided into 13 two-digit numbers.

For instance:

**AF 0F 4B C3 D4** = 64-bit key

**C3 03 0F AF 0F 4B B2 C3 D4 4B C3 D4 E7** = 128-bit key

In the boxes below, make up your key by writing in two characters between A–F and 0–9. You will use this key to program the encryption settings on your Router and your wireless computers.

Example:

64-bit:

128-bit:

**Note to Mac users:** Original Apple AirPort products support 64-bit encryption only. Apple AirPort 2 products can support 64-bit or 128-bit encryption. Please check your product to see which version you are using. If you cannot configure your network with 128-bit encryption, try 64-bit encryption.

## Using the Access Point Mode

**Note:** This advanced feature should be employed by advanced users only. The Router can be configured to work as a wireless network access point. Using this mode will defeat the NAT IP sharing feature and DHCP server. In AP mode, the Router will need to be configured with an IP address that is in the same subnet as the rest of the network that you will bridge to. The default IP address is 192.168.2.254 and subnet mask is 255.255.255.0. These can be customized for your need.

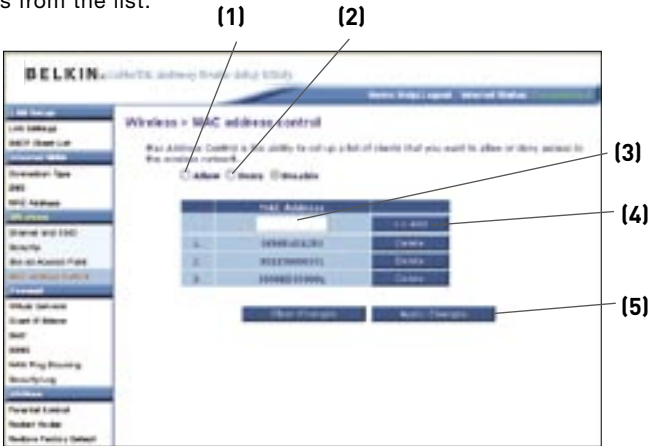
1. Enable the AP mode by selecting “Enable” in the “Use as Access Point only” page. When you select this option, you will be able to change the IP settings.
2. Set your IP settings to match your network. Click “Apply Changes”.
3. Connect a cable from the WAN port on the Router to your existing network.

The Router is now acting as an access point. To access the Router advanced user interface again, type the IP address you specified into your browser’s navigation bar. You can set the encryption settings, MAC address filtering, SSID, and channel normally.

## Setting MAC Address Control

The MAC address filter is a powerful security feature that allows you to specify which computers are allowed on the wireless network.

**Note:** This list applies only to wireless computers. This list can be configured so any computer attempting to access the wireless network that is not specified in the filter list will be denied access. When you enable this feature, you must enter the MAC address of each client (computer) to which you want to allow network access. The “Block” feature lets you turn on and off access to the network easily for any computer without having to add and remove the computer’s MAC address from the list.



## Setting up an Allow Access List

1. Select the “Allow” radio button **(1)** to begin setting up a list of computers allowed to connect to the wireless network.
2. Next, in the “MAC Address” field that is blank **(3)**, type in the MAC address of the wireless computer you want to be able to access the wireless network, then click “<<Add” **(4)**.
3. Continue to do this until all of the computers you want to add have been entered.
4. Click “Apply Changes” **(5)** to finish.

## Setting up a Deny Access List

The “Deny Access” list lets you specify computers that you DO NOT want to access the network. Any computer in the list will not be allowed access to the wireless network. All others will.

1. Select the “Deny” radio button **(2)** to begin setting up a list of computers to be denied access to the wireless network.
2. Next, in the “MAC Address” field that is blank **(3)**, type in the MAC address of the wireless computer you want to deny access to the wireless network, then click “<<Add” **(4)**.
3. Continue to do this until all of the computers you want to deny access to have been entered.
4. Click “Apply Changes” **(5)** to finish.

## Configuring the Firewall

Your Router is equipped with a firewall that will protect your network from a wide array of common hacker attacks including:

- IP Spoofing
- Land Attack
- Ping of Death (PoD)
- Denial of Service (DoS)
- IP with zero length
- Smurf Attack
- TCP Null Scan
- SYN flood
- UDP flooding
- Tear Drop Attack
- ICMP defect
- RIP defect
- Fragment flooding

The firewall also masks common ports that are frequently used to attack networks. These ports appear to be “stealth” meaning that for all intents and purposes, they do not exist to a would-be hacker. You can turn the firewall function off if needed; however, it is recommended that you leave the firewall enabled. Disabling the firewall protection will not leave your network completely vulnerable to hacker attacks, but it is recommended that you leave the firewall enabled.



## Configuring Internal Forwarding Settings

The Virtual Servers function will allow you to route external (Internet) calls for services such as a web server (port 80), FTP server (Port 21), or other applications through your Router to your internal network. Since your internal computers are protected by a firewall, computers outside your network (over the Internet) cannot get to them because they cannot be “seen”. A list of common applications has been provided in case you need to configure the Virtual Server function for a specific application. If your application is not listed, you will need to contact the application vendor to find out which port settings you need.



## Choosing an Application

Select your application from the drop-down list. Click “Add”. The settings will be transferred to the next available space in the screen. Click “Apply Changes” to save the setting for that application. To remove an application, select the number of the row that you want to remove then click “Clear”.

## Manually Entering Settings into the Virtual Server

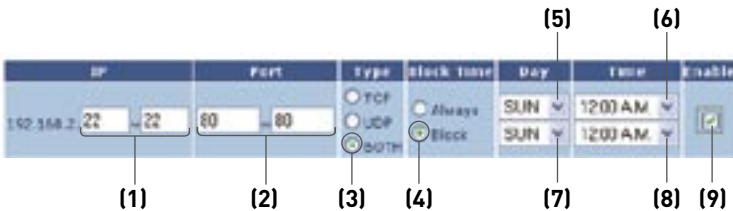
To manually enter settings, enter the IP address in the space provided for the internal (server) machine, the port(s) required to pass (use a comma between multiple ports), select the port type (TCP or UDP), and click “Apply Changes”. You can only pass one port per internal IP address. Opening ports in your firewall can pose a security risk. You can enable and disable settings very quickly. It is recommended that you disable the settings when you are not using a specific application.

## Setting Client IP Filters

The Router can be configured to restrict access to the Internet, e-mail, or other network services at specific days and times. Restriction can be set for a single computer, a range of computers, or multiple computers.



To restrict Internet access to a single computer for example, enter the IP address of the computer you wish to restrict access to in the IP fields **(1)**. Next, enter “80” in both the port fields **(2)**. Select “Both” **(3)**. Select “Block” **(4)**. You can also select “Always” to block access all of the time. Select the day to start on top **(5)**, the time to start on top **(6)**, the day to end on the bottom **(7)**, and the time to stop **(8)** on the bottom. Select “Enable” **(9)**. Click “Apply Changes”. The computer at the IP address you specified will now be blocked from Internet access at the times you specified. Note: Be sure you have selected the correct time zone under “Utilities> System Settings> Time Zone”.





## Enabling the Demilitarized Zone (DMZ)

The DMZ feature allows you to specify one computer on your network to be placed outside of the firewall. This may be necessary if the firewall is causing problems with an application such as a game or video conferencing application. Use this feature on a temporary basis. The computer in the DMZ is NOT protected from hacker attacks.



To put a computer in the DMZ, enter the last digits of its IP address in the IP field and select "Enable". Click "Apply Changes" for the change to take effect. If you are using multiple static WAN IP addresses, it is possible to select which WAN IP address the DMZ host will be directed to. Type in the WAN IP address you wish the DMZ host to direct to, enter the last two digits of the IP address of the DMZ host computer, select "Enable" and click "Apply Changes".

## Using Dynamic DNS

The Dynamic DNS service allows you to alias a dynamic IP address to a static host name in any of the many domains DynDNS.org offers, allowing your network computers to be more easily accessed from various locations on the Internet. DynDNS.org provides this service, for up to five host names, free to the Internet community.

The Dynamic DNSSM service is ideal for a home website, file server, or to make it easy to access your home PC and stored files while you're at work. Using the service can ensure that your host name always points to your IP address, no matter how often your ISP changes it. When your IP address changes, your friends and associates can always locate you by visiting yourname.dyndns.org instead!

To register free for your Dynamic DNS host name, please visit <http://www.dyndns.org>.

## Setting up the Router's Dynamic DNS Update Client

You must register with DynDNS.org's free update service before using this feature. Once you have your registration, follow the directions below.

1. Enter your DynDNS.org user name in the "User Name" field **(1)**.
2. Enter your DynDNS.org password in the "Password" field **(2)**.
3. Enter the DynDNS.org domain name you set up with DynDNS.org in the "Domain Name" field **(3)**.
4. Click "Update Dynamic DNS" to update your IP address.

Whenever your IP address assigned by your ISP changes, the Router will automatically update DynDNS.org's servers with your new IP address. You can also do this manually by clicking the "Update Dynamic DNS" button **(4)**.



## Blocking an ICMP Ping

Computer hackers use what is known as “pinging” to find potential victims on the Internet. By pinging a specific IP address and receiving a response from the IP address, a hacker can determine that something of interest might be there. The Router can be set up so it will not respond to an ICMP ping from the outside. This heightens your Router’s security level.



To turn off the ping response, select “Block ICMP Ping” **(1)** and click “Apply Changes”. The Router will not respond to an ICMP ping.

## Utilities

The “Utilities” screen lets you manage different parameters of the Router and perform certain administrative functions.



## Parental Control

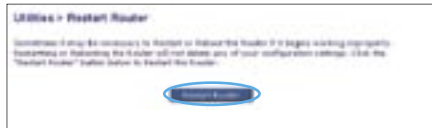
See the included Parental Control User Manual for more information on the Parental Control feature.

## Restarting the Router

Sometimes it may be necessary to restart or reboot the Router if it begins working improperly. Restarting or rebooting the Router will **NOT** delete any of your configuration settings.

## Restarting the Router to Restore Normal Operation

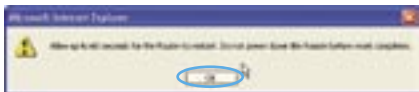
1. Click the “Restart Router” button.



2. The following message will appear. Click “OK”.



3. The following message will appear. Restarting the Router can take up to 60 seconds. It is important not to turn off the power to the Router during the restart.

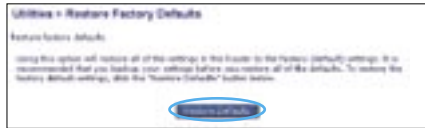


4. A 60-second countdown will appear on the screen. When the countdown reaches zero, the Router will be restarted. The Router home page should appear automatically. If not, type in the Router’s address (default = 192.168.2.1) into the navigation bar of your browser.

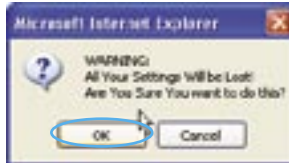
## Restoring Factory Default Settings

Using this option will restore all of the settings in the Router to the factory (default) settings. It is recommended that you back up your settings before you restore all of the defaults.

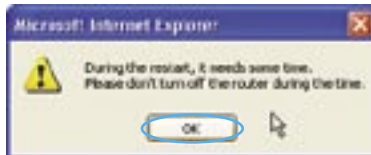
1. Click the “Restore Defaults” button.



2. The following message will appear. Click “OK”.



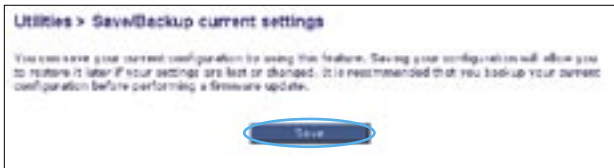
3. The following message will appear. Restoring the defaults includes restarting the Router. It can take up to 60 seconds. It is important not to turn the power to the Router off during the restart.



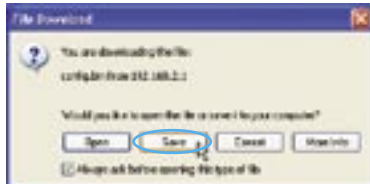
4. A 60-second countdown will appear on the screen. When the countdown reaches zero, the Router's defaults will be restored. The Router home page should appear automatically. If it does not, type in the Router's address (default = 192.168.2.1) into the navigation bar of your browser.

## Saving a Current Configuration

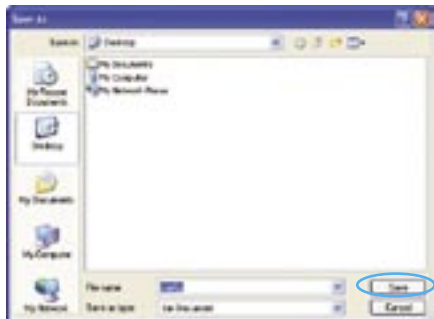
You can save your current configuration by using this feature. Saving your configuration will allow you to restore it later if your settings are lost or changed. It is recommended that you back up your current configuration before performing a firmware update.



1. Click "Save". A window called "File Download" will open. Click "Save".



2. A window will open that allows you to select the location where you want to save the configuration file. Select a location. You can name the file anything you want, or use the default name "Config". Be sure to name the file so you can locate it yourself later. When you have selected the location and name of the file, click "Save".



3. When the save is complete, you will see the window below. Click "Close".

The configuration is now saved.

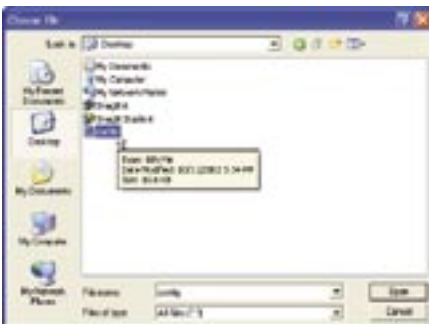


## Restoring a Previous Configuration

This option will allow you to restore a previously saved configuration.



1. Click "Browse". A window will open that allows you to select the location of the configuration file. All configuration files end with a ".bin". Locate the configuration file you want to restore and double-click on it.

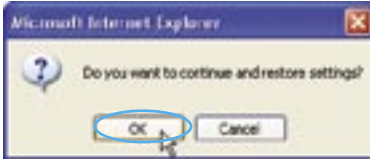




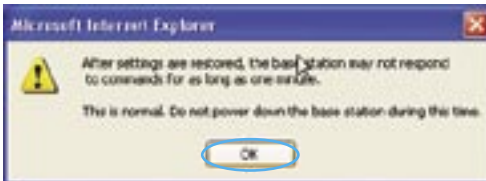
# Using the Web-Based Advanced User Interface

---

2. You will be asked if you want to continue. Click “OK”.



3. A reminder window will appear. It will take up to 60 seconds for the configuration restoration to complete. Click “OK”.



4. A 60-second countdown will appear on the screen. When the countdown reaches zero, the Router's configuration will be restored. The Router home page should appear automatically. If not, type in the Router's address (default = 192.168.2.1) into the navigation bar of your browser.

## Updating the Firmware

From time to time, Belkin may release new versions of the Router's firmware. Firmware updates contain feature improvements and fixes to problems that may have existed. When Belkin releases new firmware, you can download the firmware from the Belkin update website and update your Router's firmware to the latest version.

### Utilities > Firmware Update

From time to time, Belkin may release new versions of the Router's firmware. Firmware updates contain improvements and fixes to problems that may have existed. Click the link below to see if there is a new firmware update available for this Router.

NOTE: Please backup your current settings before updating to a new version of firmware. Click Here to go to the Save/Backup current settings page.

Check For new Firmware Version >

**(1)**

Update Firmware >

## Checking for a New Version of Firmware

The "Check Firmware" **(1)** button allows you to instantly check for a new version of firmware. When you click the button, a new browser window will appear informing you that either no new firmware is available or that there is a new version available. If a new version is available, you will have the option to download it.

1

2

3

4

5

6

7

8

9

10

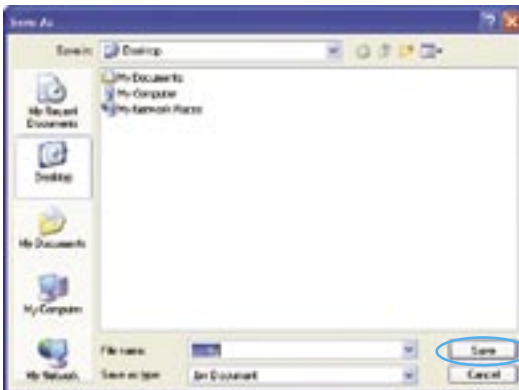
section

## Downloading a New Version of Firmware

If you click the “Check Firmware” button and a new version of firmware is available, you will see a screen similar to the one below:



1. To download the new version of firmware, click “Download”.
2. A window will open that allows you to select the location where you want to save the firmware file. Select a location. You can name the file anything you want, or use the default name. Be sure to locate the file in a place where you can locate it yourself later. When you have selected the location, click “Save”.



# Using the Web-Based Advanced User Interface

- When the save is complete, you will see the following window. Click “Close”.



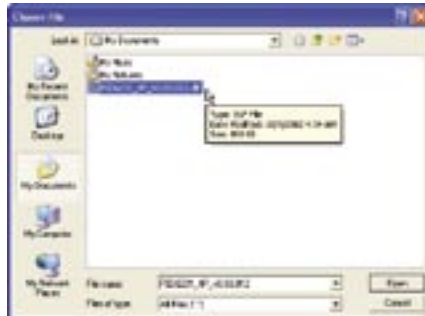
The download of the firmware is complete. To update the firmware, follow the next steps in “Updating the Router’s Firmware”.

## Updating the Router’s Firmware

- In the “Firmware Update” page, click “Browse”. A window will open that allows you to select the location of the firmware update file.



- Browse to the firmware file you downloaded. Select the file by double-clicking on the file name.

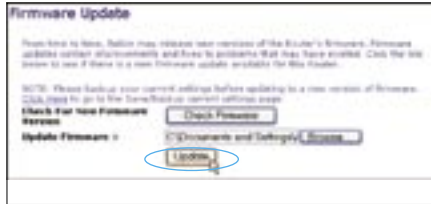


1  
2  
3  
4  
5  
6  
7  
8  
9  
10

section

# Using the Web-Based Advanced User Interface

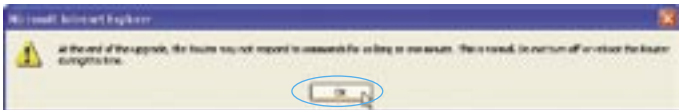
3. The “Update Firmware” box will now display the location and name of the firmware file you just selected. Click “Update”.



4. You will be asked if you are sure you want to continue. Click “OK”.



5. You will see one more message. This message tells you that the Router may not respond for as long as one minute as the firmware is loaded into the Router and the Router is rebooted. Click “OK”.



6. A 60-second countdown will appear on the screen. When the countdown reaches zero, the Router firmware update will be complete. The Router home page should appear automatically. If not, type in the Router’s address (default = 192.168.2.1) into the navigation bar of your browser.

## Changing System Settings

The “System Settings” page is where you can enter a new administrator password, set the time zone, enable remote management, and turn on and off the NAT function of the Router.

### Setting or Changing the Administrator Password

The Router ships with NO password entered. If you wish to add a password for greater security, you can set a password here. Write down your password and keep it in a safe place, as you will need it if you need to log into the Router in the future. It is also recommended that you set a password if you plan to use the remote management feature of your Router.



The screenshot shows a web form titled "Administrator Passwords". Below the title is a paragraph: "The Router ships with NO password entered. If you wish to add a password for more security, you can set a password here. Here, you:" followed by four input fields:

- "Type in current Password >" with an empty text box.
- "Type in new Password >" with an empty text box.
- "Confirm new Password >" with an empty text box.
- "Login Timeout >" with a numeric input field containing "10" and a label "(1-99 minutes)".

### Changing the Login Time-Out Setting

The login time-out option allows you to set the period of time that you can be logged into the Router’s advanced setup interface. The timer starts when there has been no activity. For example, imagine you have made some changes in the advanced setup interface, then left your computer alone without clicking “Logout”. Assuming the time-out is set to 10 minutes, 10 minutes after you leave, the login session will expire. You will have to log into the Router again to make any more changes. The login time-out option is for security purposes and the default is set to 10 minutes.

**Note:** Only one computer can be logged into the Router’s advanced setup interface at one time.

## Setting the Time and Time Zone

The Router keeps time by connecting to a Simple Network Time Protocol (SNTP) server. This allows the Router to synchronize the system clock to the global Internet. The synchronized clock in the Router is used to record the security log and control client filtering. Select the time zone that you reside in. You have the option to select a primary and a backup NTP server to keep your Router's clock synchronized. Select your desired NTP server from the drop-down box, or simply keep it as is.

If you reside in an area that observes daylight saving, then place a check mark in the box next to "Enable Daylight Saving". The system clock may not update immediately. Allow at least 15 minutes for the Router to contact the time servers on the Internet and get a response. You cannot set the clock yourself.



## Enabling Remote Management

Before you enable this advanced feature of your Belkin Router, **MAKE SURE YOU HAVE SET THE ADMINISTRATOR PASSWORD**. Remote management allows you to make changes to your Router's settings from anywhere on the Internet. There are two methods of remotely managing the Router. The first is to allow access to the Router from anywhere on the Internet by selecting "Any IP address can remotely manage the Router". By typing in your WAN IP address from any computer on the Internet, you will be presented with a login screen where you need to type in the password of your Router. The second method is to allow a specific IP address only to remotely manage the Router. This is more secure, but less convenient. To use this method, enter the IP address you know you will be accessing the Router from in the space provided and select "Only this IP address can remotely manage the Router". Before you enable this function, it is **STRONGLY RECOMMENDED** that you set your administrator password. Leaving the password empty will potentially open your Router to intrusion.

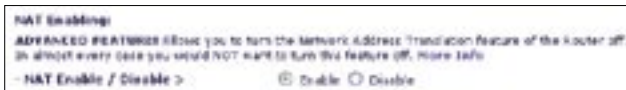
Advanced Feature: The “Remote Access Port” option allows you to configure the desired “Remote Access Port for Remote Management” feature. The default access port is set to port 80.



## Enabling/Disabling NAT (Network Address Translation)

**Note:** This advanced feature should be employed by advanced users only.

Before enabling this function, **MAKE SURE YOU HAVE SET THE ADMINISTRATOR PASSWORD**. Network Address Translation (NAT) is the method by which the Router shares the single IP address assigned by your ISP with the other computers on your network. This function should only be used if your ISP assigns you multiple IP addresses or you need NAT disabled for an advanced system configuration. If you have a single IP address and you turn NAT off, the computers on your network will not be able to access the Internet. Other problems may also occur. Turning off NAT will not affect your firewall functions.





## Enabling/Disabling UPnP

UPnP (Universal Plug-and-Play) is yet another advanced feature offered by your Belkin Router. It is a technology that offers seamless operation of voice messaging, video messaging, games, and other applications that are UPnP-compliant. Some applications require the Router's firewall to be configured in a specific way to operate properly. This usually requires opening TCP and UDP ports, and in some instances, setting trigger ports. An application that is UPnP-compliant has the ability to communicate with the Router, basically "telling" the Router which way it needs the firewall configured. The Router ships with the UPnP feature disabled. If you are using any applications that are UPnP-compliant, and wish to take advantage of the UPnP features, you can enable the UPnP feature. Simply select "Enable" in the "UPnP Enabling" section of the "Utilities" page. Click "Apply Changes" to save the change.



## Enabling/Disabling Auto Firmware Update

This innovation provides the Router with the built-in capability to automatically check for a new version of firmware and alert you that the new firmware is available. When you log into the Router's advanced interface, the Router will perform a check to see if new firmware is available. If so, you will be notified. You can choose to download the new version or ignore it.



# Manually Configuring Network Settings

1

2

3

4

5

6

7

section

8

9

10

Set up the computer that is connected to the cable or DSL modem FIRST using these steps. You can also use these steps to add computers to your Router after the Router has been set up to connect to the Internet.

## Manually Configuring Network Settings in Mac OS up to 9.x

1. Pull down the Apple menu. Select “Control Panels” and select “TCP/IP”.
2. You will see the TCP/IP control panel. Select “Ethernet Built-In” or “Ethernet” in the “Connect via:” drop-down menu **(1)**.
3. Next to “Configure” **(2)**, if “Manually” is selected, your Router will

(1)

(2)



need to be set up for a static IP connection type. Write the address information in the table below. You will need to enter this information into the Router.

IP Address:	<input type="text"/>
Subnet Mask:	<input type="text"/>
Router Address:	<input type="text"/>
Name Server Address:	<input type="text"/>

4. If not already set, at “Configure:”, choose “Using DHCP Server”. This will tell the computer to obtain an IP address from the Router.



5. Close the window. If you made any changes, the following window will appear. Click “Save”.



**Restart the computer. When the computer restarts, your network settings are now configured for use with the Router.**

# Manually Configuring Network Settings

---

## Manually Configuring Network Adapters in Mac OS X

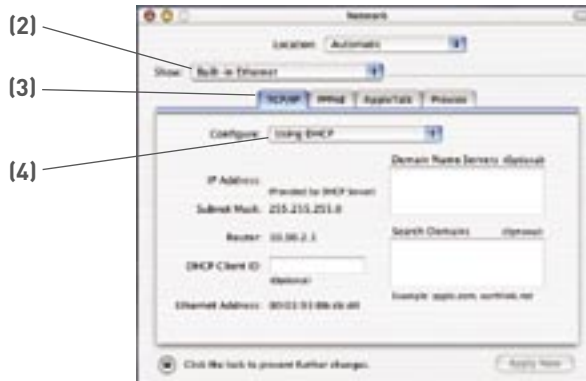
1. Click on the “System Preferences” icon.



2. Select “Network” **(1)** from the “System Preferences” menu.



3. Select “Built-in Ethernet” **(2)** next to “Show” in the Network menu.



# Manually Configuring Network Settings

---

4. Select the “TCP/IP” tab **(3)**. Next to “Configure” **(4)**, you should see “Manually” or “Using DHCP”. If you do not, check the PPPoE tab **(5)** to make sure that “Connect using PPPoE” is NOT selected. If it is, you will need to configure your Router for a PPPoE connection type using your user name and password.
5. If “Manually” is selected, your Router will need to be set up for a static IP connection type. Write the address information in the table below. You will need to enter this information into the Router.

IP Address	<input type="text"/>
Subnet Mask	<input type="text"/>
Router Address	<input type="text"/>
Name Server Address	<input type="text"/>

6. If not already selected, select “Using DHCP” next to “Configure” **(4)**, then click “Apply Now”.

**Your network settings are now configured for use with the Router.**

1

2

3

4

5

6

7

8

9

10

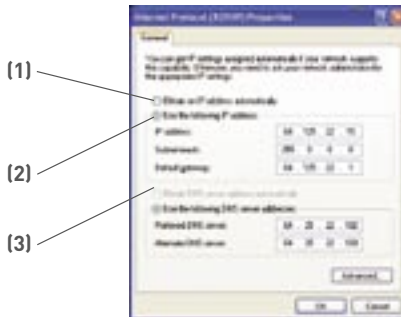
section

# Manually Configuring Network Settings

---

## Manually Configuring Network Settings in Windows 2000, NT, or XP

1. Click “Start”, “Settings”, then “Control Panel”.
2. Double-click on the “Network and dial-up connections” icon (Windows 2000) or the “Network” icon (Windows XP).
3. Right-click on the “Local Area Connection” associated with your network adapter and select “Properties” from the drop-down menu.
4. In the “Local Area Connection Properties” window, click “Internet Protocol (TCP/IP)” and click the “Properties” button. The following screen will appear:
5. If “Use the following IP address” **(2)** is selected, your Router will



need to be set up for a static IP connection type. Write the address information in the table below. You will need to enter this information into the Router.

6. If not already selected, select “Obtain an IP address automatically” **(1)** and “Obtain DNS server address automatically” **(3)**. Click “OK”.  
**Your network settings are now configured for use with the Router.**

IP address:	<input type="text"/>
Subnet mask:	<input type="text"/>
Default gateway:	<input type="text"/>
Preferred DNS server:	<input type="text"/>
Alternate DNS server:	<input type="text"/>

# Manually Configuring Network Settings

## Manually Configuring Network Adapters in Windows 98SE or Me

1. Right-click on “My Network Neighborhood” and select “Properties” from the drop-down menu.
2. Select “TCP/IP Settings” for your installed network adapter. You will see the following window.



3. If “Specify an IP address” is selected, your Router will need to be set up for a static IP connection type. Write the address information in the table below. You will need to enter this information into the Router.
4. Write the IP address and subnet mask from the “IP Address” tab **(3)**.
5. Click the “Gateway” tab **(2)**. Write the gateway address down in the chart.
6. Click the “DNS Configuration” tab **(1)**. Write the DNS address(es) in the chart.
7. If not already selected, select “Obtain IP address automatically” on the IP address tab. Click “OK”.

IP address	<input type="text"/>
Subnet Mask	<input type="text"/>
Default gateway	<input type="text"/>
Preferred DNS server	<input type="text"/>
Alternate DNS server	<input type="text"/>

**Restart the computer. When the computer restarts, your network adapter(s) are now configured for use with the Router.**

1

2

3

4

5

6

7

8

9

10

section

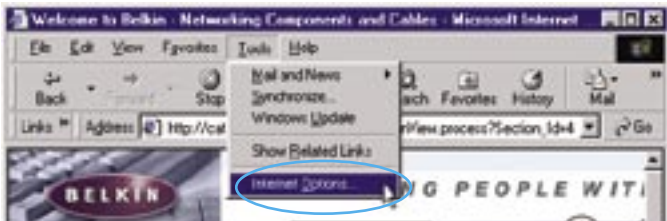
# Recommended Web Browser Settings

---

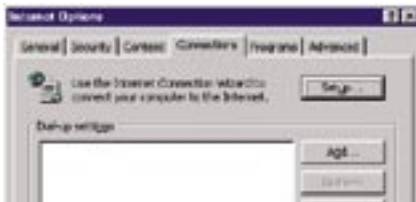
In most cases, you will not need to make any changes to your web browser's settings. If you are having trouble accessing the Internet or the advanced web-based user interface, then change your browser's settings to the recommended settings in this section.

## Internet Explorer 4.0 or Higher

1. Start your web browser. Select “Tools” then “Internet Options”.



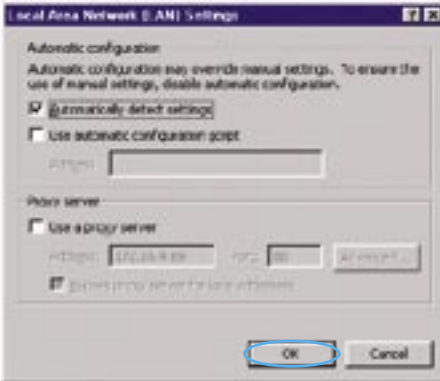
2. In the “Internet Options” screen, there are three selections: “Never dial a connection”, “Dial whenever a network connection is not present”, and “Always dial my default connection”. If you can make a selection, select “Never dial a connection”. If you cannot make a selection, go to the next step.



3. Under the “Internet Options” screen, click on “Connections” and select “LAN Settings...”.

# Recommended Web Browser Settings

4. Make sure there are no check marks next to any of the displayed options: “Automatically detect settings”, “Use automatic configuration script”, and “Use a proxy server”. Click “OK”. Then click “OK” again in the “Internet Options” page.



## Netscape Navigator 4.0 or Higher

1. Start Netscape. Click on “Edit” then “Preferences”.
2. In the “Preferences” window, click on “Advanced” then select “Proxies”. In the “Proxies” window, select “Direct connection to the Internet”.



1  
2  
3  
4  
5  
6  
7  
8  
9  
10

section



# Troubleshooting

---

## **Problem:**

Installation CD does not automatically start.

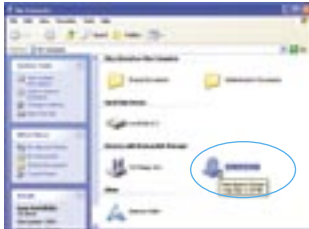
## **Solution:**

If the CD-ROM does not start the Easy Install Wizard automatically, it could be that the computer is running other applications that are interfering with the CD drive.

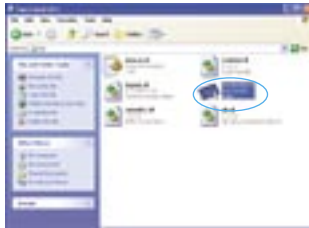
1. If the Easy Install Wizard screen does not appear within 15-20 seconds, open up your CD-ROM drive by double-clicking on the “My Computer” icon that is located on your desktop.



2. Next, double-click on the CD-ROM drive that the Easy Installation CD has been placed in to start the installation.



3. The Easy Install Wizard should start within a few seconds. If, instead, a window appears showing the files on the CD, double-click on the icon labeled “EasyInstall.exe”.



4. If the Easy Install Wizard still does not start, reference the section titled “Manually Configuring Network Settings” (page 79) of this User Manual for an alternative setup method).

# Troubleshooting

---

## Problem:

Easy Install Wizard cannot find my Router.

## Solution:

If the Easy Install Wizard is not able to find the Router during the installation process, please check the following items:

1. If the Easy Install Wizard is not able to find the Router during the installation process, there may be third-party firewall software installed on the computer attempting to access the Internet. Examples of third-party firewall software are ZoneAlarm, BlackICE PC Protection, McAfee Personal Firewall, and Norton Personal Firewall. If you do have firewall software installed on your computer, please make sure that you properly configure it. You can determine if the firewall software is preventing Internet access by temporarily turning it off. If, while the firewall is disabled, Internet access works properly, you will need to change the firewall settings to function properly when it is turned on. Please refer to the instructions provided by the publisher of your firewall software for instructions on configuring the firewall to allow Internet access.
2. Unplug power to the Router for 10 seconds, and then plug the power back into the Router. Ensure that the Router's Power light is on; it should be solid green. If not, check to make sure that the AC adapter is connected to the Router and plugged into a wall outlet.
3. Ensure that you have a cable (use the cable included with the Router) connected between **(1)** the network (Ethernet) port on the back of the computer and **(2)** one of the LAN ports, labeled "1" through "4", on the back of the Router.  
**Note:** The computer should NOT be connected to the port labeled "Internet/WAN" on the back of the Router.
4. Try shutting down and restarting your computer, then rerunning the Easy Install Wizard.

If the Easy Install Wizard is still unable to find the Router, reference the section titled "Manually Configuring Network Settings" for installation steps.

1

2

3

4

5

6

7

8

9

10

section

# Troubleshooting

---

## **Problem:**

Easy Install Wizard cannot connect my Router to the Internet.

## **Solution:**

If the Easy Install Wizard is not able to connect the Router to the Internet, please check the following items:

1. Use the troubleshooting suggestions within the Easy Install Wizard. If the troubleshooting screen does not open automatically, click on the “Troubleshoot” button in the lower, right-hand corner of the Easy Install Wizard window.
2. If your ISP requires a user name and password, make sure that you have typed in your user name and password correctly. Some user names require that the ISP’s domain may be at the end of the name. Example: “myname@myisp.com”. The “@myisp.com” part of the user name may need to be typed as well as your user name.

If you continue to have no Internet connection, reference the section titled “Manually Configuring Network Settings” on page 79.

## **Problem:**

- The Easy Install Wizard completed installation, but my web browser doesn’t work.
- I am unable to connect to the Internet. The “WAN” light on my Router is off, and the “Connected” light is blinking.

## **Solution:**

If you cannot connect to the Internet, and the “WAN” light is off, and the “Connected” light is blinking, the problem may be that your modem and Router are not connected properly.

1. Make sure the network cable between the modem and the Router is connected. We strongly recommend using the cable that was supplied with your cable or DSL modem for this purpose. The cable should be connected at one end to the Router’s “Internet/WAN” port, and at the other end to the network port on your modem.
2. Unplug the cable or DSL modem from its power source for three minutes. After three minutes, plug the modem back into its

power source. This may force the modem to properly recognize the Router.

3. Unplug the power to your Router, wait 10 seconds, and then reconnect the power. This will cause the Router to reattempt communication with the modem. If the “WAN” light on the Router is not lit after completing these steps, please contact Belkin Technical Support.
4. Try shutting down and restarting your computer.

## Problem:

- The Easy Install Wizard completed installation, but my web browser doesn’t work.
- I am unable to connect to the Internet. The “WAN” light on my Router is on, and the “Connected” light is blinking.

## Solution:

1. If you cannot connect to the Internet, the “WAN” light is on, and the “Connected” light is blinking, the problem may be that your connection type may not match the ISP’s connection.
2. If you have a “static IP address” connection, your ISP must assign you the IP address, subnet mask, and gateway address. Please refer to the section entitled “Alternate Setup Method” for details on changing this setting.
3. If you have a “PPPoE” connection, your ISP will assign you a user name and password and sometimes a service name. Make sure the Router’s connection type is configured to PPPoE and the settings are entered properly. Please refer to the section entitled “Alternate Setup Method” for details on changing this setting.
4. You may need to configure your Router to meet the specific requirements of your ISP. To search our knowledge base for ISP-specific issues, go to: <http://web.belkin.com/support> and type in “ISP”.

If you are still unable to access the Internet after verifying these settings, please contact Belkin Technical Support.

1

2

3

4

5

6

7

8

9

10

section

# Troubleshooting

---

## **Problem:**

- The Easy Install Wizard completed, but my web browser doesn't work.
- I am unable to connect to the Internet. The "WAN" light on my Router is blinking, and the "Connected" light is solid.

## **Solution:**

1. If the "WAN" light is blinking, and the "Connected" light is solid, but you are unable to access the Internet, there may be third-party firewall software installed on the computer attempting to access the Internet. Examples of third-party firewall software are ZoneAlarm, BlackICE PC Protection, McAfee Personal Firewall, and Norton Personal Firewall.
2. If you do have firewall software installed on your computer, please make sure that you properly configure it. You can determine if the firewall software is preventing Internet access by temporarily turning it off. If, while the firewall is disabled, Internet access works properly, you will need to change the firewall settings to function properly when it is turned on.
3. Please refer to the instructions provided by the publisher of your firewall software for instructions on configuring the firewall to allow Internet access.

If you are still unable to access the Internet after disabling any firewall software, please contact Belkin Technical Support.

## Problem:

I can't connect to the Internet wirelessly.

## Solution:

If you are unable to connect to the Internet from a wireless computer, please check the following items:

1. Look at the lights on your Router. If you're using a Belkin Router, the lights should be as follows:
  - The "Power" light should be on.
  - The "Connected" light should be on, and not blinking.
  - The "WAN Internet" light should be either on or blinking.
  - The "Wireless" light should be on or blinking
2. Open your wireless utility software by clicking on the icon in the system tray at the bottom, right-hand corner of the screen.



3. The exact window that opens will vary depending on the model of wireless card you have; however, any of the utilities should have a list of "Available Networks"—those wireless networks it can connect to.

### Does the name of your wireless network appear in the results?

**Yes, my network name is listed** – go to the troubleshooting solution titled "I can't connect to the Internet wirelessly, but my network name is listed"

**No, my network name is not listed** - go to the troubleshooting solution titled "I can't connect to the Internet wirelessly, and my network name is not listed"

1

2

3

4

5

6

7

8

9

10

# Troubleshooting

---

## **Problem:**

I can't connect to the Internet wirelessly, but my network name is listed.

## **Solution:**

If the name of your network is listed in the "Available Networks" list, please follow the steps below to connect wirelessly:

1. Click on the correct network name in the "Available Networks" list.
2. If the network has security (encryption) enabled, you will need to enter the network key. For more information regarding security, see the section entitled: "Setting WEP Encryption".
3. Within a few seconds, the tray icon in the lower left-hand corner of your screen should turn green, indicating a successful connection to the network.

## **Problem:**

I can't connect to the Internet wirelessly, and my network name is not listed.

## **Solution:**

If the correct network name is not listed under "Available Networks" in the wireless utility, please attempt the following troubleshooting steps:

1. Temporarily move computer, if possible, five to 10 feet from the Router. Close the wireless utility, and reopen it. If the correct network name now appears under "Available Networks", you may have a range or interference problem. Please see the suggestions discussed in the section titled "Placement of your Wireless G Plus MIMO Router" on page 2 of this User Manual.
2. Using a computer that is connected to the Router via a network cable (as opposed to wirelessly), ensure that "Broadcast SSID" is enabled. This setting is found on the Router's wireless "Channel and SSID" configuration page.

If you are still unable to access the Internet after completing these steps, please contact Belkin Technical Support.

**Problem:**

- My wireless network performance is inconsistent.
- Data transfer is sometimes slow.
- Signal strength is poor.
- Difficulty establishing and/or maintaining a Virtual Private Network (VPN) connection.

**Solution:**

Wireless technology is radio-based, which means connectivity and the throughput performance between devices decreases when the distance between devices increases. Other factors that will cause signal degradation (metal is generally the worst culprit) are obstructions such as walls and metal appliances. Note also that connection speed may decrease as you move farther away from the Router (or access point).

In order to determine if wireless issues are related to range, we suggest temporarily moving the computer, if possible, five to 10 feet from the Router.

**Changing the wireless channel**—Depending on local wireless traffic and interference, switching the wireless channel of your network can improve performance and reliability. The default channel the Router is shipped with is channel 11; you may choose from several other channels depending on your region. See the section on page 48 entitled “Changing the Wireless Channel” for instructions on how to choose other channels.

**Limiting the wireless transmit rate**—Limiting the wireless transmit rate can help improve the maximum wireless range and connection stability. Most wireless cards have the ability to limit the transmission rate. To change this property, go to the Windows Control Panel, open “Network Connections” and double-click on your wireless card’s connection. In the properties dialog, select the “Configure” button on the “General” tab (Windows 98 users will have to select the wireless card in the list box and then click “Properties”), then choose the “Advanced” tab and select the rate property.



# Troubleshooting

---

Wireless client cards are usually set to automatically adjust the wireless transmit rate for you, but doing so can cause periodic disconnects when the wireless signal is too weak; as a rule, slower transmission rates are more stable. Experiment with different connection rates until you find the best one for your environment. Note that all available transmission rates should be acceptable for browsing the Internet. For more assistance, see your wireless card's user manual.

## Problem:

I am having difficulty setting up Wired Equivalent Privacy (WEP) security on a Belkin Router (or Belkin Access Point).

## Solution:

1. Log into your Wireless Router (or Access Point).

Open your web browser and type in IP address of the Wireless Router (or Access Point). (The Router's default is 192.168.2.1, the 802.11g Access Point is 192.168.2.254.) Log into your Router by clicking on the "Login" button in the top right-hand corner of the screen. You will be asked to enter your password. If you never set a password, leave the password field blank and click "Submit".

Click the "Wireless" tab on the left of your screen. Select the "Encryption" or "Security" tab to get to the security settings page.

2. Select "128-bit WEP" from the drop-down menu.
3. After selecting your WEP encryption mode, you can type in your hex WEP key manually, or you can type in a passphrase in the "Passphrase" field and click "Generate" to create a WEP key from the passphrase. Click "Apply Changes" to finish. You must now set all of your clients to match these settings. A hex (hexadecimal) key is a mixture of numbers and letters from A-F and 0-9. For 128-bit WEP, you need to enter 26 hex keys.

For example:

**C3030FAF4BB2C3D44BC3D4E7E4** = 128-bit key

4. Click "Apply Changes" to finish. Encryption in the Wireless Router is now set. Each of your computers on your wireless network will now need to be configured with the same security settings.

**WARNING:** If you are configuring the Wireless Router (or Access Point) from a computer with a wireless client, you will need to ensure that security is turned on for this wireless client. If this is not done, you will lose your wireless connection.

**Note to Mac users:** Original Apple AirPort products support 64-bit encryption only. Apple AirPort 2 products can support 64-bit or 128-bit encryption. Please check your Apple AirPort product to see which version you are using. If you cannot configure your network with 128-bit encryption, try 64-bit encryption.

## Problem:

I am having difficulty setting up Wired Equivalent Privacy (WEP) security on a Belkin client card.

## Solution:

The client card must use the same key as the Wireless Router (or access point). For instance, if your Wireless Router (or access point) uses the key 00112233445566778899AABBCC, then the client card must be set to the exact same key.

1. Double-click the Signal Indicator icon to bring up the “Wireless Network” screen.
2. The “Advanced” button will allow you to view and configure more options of the card.
3. Once the “Advanced” button is clicked, the Belkin Wireless LAN Utility will appear. This Utility will allow you to manage all the advanced features of the Belkin Wireless Card.
4. Under the “Wireless Network Properties” tab, select a network name from the “Available Networks” list and click the “Properties” button.
5. Under “Data Encryption”, select “WEP”.
6. Ensure the check box “The key is provided for me automatically” at the bottom is unchecked. If you are using this computer to connect to a corporate network, please consult your network administrator if this box needs to be checked.

1

2

3

4

5

6

7

8

9

10

section

# Troubleshooting

---

7. Type your WEP key in the “Network key” box.

**Important:** A WEP key is a mixture of numbers and letters from A-F and 0-9. For 128-bit WEP, you need to enter 26 keys. This network key needs to match the key you assign to your Wireless Router (or access point).

For example:

**C3030FAF4BB2C3D44BC3D4E7E4** = 128-bit key

8. Click “OK”, and then “Apply” to save the settings.

If you are NOT using a Belkin wireless client card, please consult the manufacturer’s user manual for that wireless client card.

## Problem:

Do Belkin products support WPA?

## Solution

**Note:** To use WPA security, all your clients must be upgraded to drivers and software that support it. At the time of this FAQ publication, a security patch download is available, for free, from Microsoft. This patch works only with the Windows XP operating system.

Download the patch here:

<http://www.microsoft.com/downloads/details.aspx?FamilyID=009d8425-ce2b-47a4-abec-274845dc9e91&displaylang=en>

You also need to download the latest driver for your Belkin Wireless 802.11g Desktop or Notebook Network Card from the Belkin support site. Other operating systems are not supported at this time. Microsoft’s patch only supports devices with WPA-enabled drivers such as Belkin 802.11g products

**Download the latest driver at <http://web.belkin.com/support> for the following products:**

F5D7000, F5D7001, F5D7010, F5D7011, F5D7230-4, F5D7231-4, F5D7130

**Problem:**

I am having difficulty setting up Wireless Protected Access (WPA) security on a Belkin Wireless Router (or Belkin Access Point) for a home network.

**Solution:**

1. From the “Security Mode” drop-down menu, select “WPA-PSK (no server)”.
2. For “Encryption Technique”, select “TKIP” or “AES”. This setting will have to be identical on the clients that you set up.
3. Enter your pre-shared key. This can be from eight to 63 characters and can be letters, numbers, symbols, or spaces. This same key must be used on all of the clients that you set up. For example, your PSK might be something like: “Smith family network key”.
4. Click “Apply Changes” to finish. You must now set all clients to match these settings.

**Problem:**

I am having difficulty setting up Wireless Protected Access (WPA) security on a Belkin wireless client card for a home network.

**Solution:**

Clients must use the same key that the Wireless Router (or access point) uses. For instance, if the key is “Smith Family Network Key” in the Wireless Router (or access point), the clients must also use that same key.

1. Double-click the Signal Indicator icon to bring up the “Wireless Network” screen. The “Advanced” button will allow you to view and configure more options of your card.
2. Once the “Advanced” button is clicked, the Belkin Wireless Utility will appear. This Utility will allow you to manage all the advanced features of the Belkin Wireless Card.

# Troubleshooting

---

3. Under the “Wireless Network Properties” tab, select a network name from the “Available Networks” list and click the “Properties” button.
4. Under “Network Authentication”, select “WPA-PSK (no server).”
5. Type your WPA key in the “Network key” box.

**Important:** WPA-PSK is a mixture of numbers and letters from A-Z and 0-9. For WPA-PSK you can enter eight to 63 characters. This network key needs to match the key you assign to your Wireless Router (or access point).

6. Click “OK, then “Apply” to save the settings.

## **Problem:**

I am NOT using a Belkin client card for a home network and I am having difficulty setting up Wireless Protected Access (WPA) security.

## **Solution:**

If you are not using a Belkin Wireless Desktop or Wireless Notebook Network Card that is not equipped with WPA-enabled software, a file from Microsoft called “Windows XP Support Patch for Wireless Protected Access” is available for free download. Download the patch from Microsoft by searching the knowledge base for Windows XP WPA.

**Note:** The file that Microsoft has made available works only with Windows XP. Other operating systems are not supported at this time. You also need to ensure that the wireless card’s manufacturer supports WPA and that you have downloaded and installed the latest driver from their support site.

Supported Operating Systems:

- Windows XP Professional
- Windows XP Home Edition

1. Under Windows XP, click “Start > Control Panel > Network Connections”.
2. Select the “Wireless Networks” tab will display the following screen. Ensure the “Use Windows to configure my wireless network settings” check box is checked.



3. Under the “Wireless Networks” tab, click the “Configure” button and you will see the following screen.



4. For a home or small business user, select “WPA-PSK” under “Network Authentication”.

**Note:** Select WPA (with radius server) if you are using this computer to connect to a corporate network that supports an authentication server such as a radius server. Please consult your network administrator for further information.

# Troubleshooting

---

5. Select “TKIP” or “AES” under “Data Encryption”. This setting will have to be identical to the Wireless Router (or access point) that you set up.
6. Type in your encryption key in the “Network key” box.

**Important:** Enter your pre-shared key. This can be from eight to 63 characters and can be letters, numbers, or symbols. This same key must be used on all of the clients that you set up.

7. Click “OK” to apply settings.

## **What is the difference between 802.11b, 802.11g, G Plus MIMO, and Pre-N?**

Currently there are four levels of wireless networking standards, which transmit data at very different maximum speeds. Each is based on the designation 802.11(x), so named by the IEEE, the board that is responsible for certifying networking standards. The most common wireless networking standard, 802.11b, transmits information at 11Mbps; 802.11a and 802.11g work at 54Mbps; G Plus MIMO works at 54Mbps; and Pre-N works at 108Mbps.

## Wireless Comparison Chart

Wireless Technology	802.11b	G (802.11g)	G Plus (802.11g with HSM)	G Plus MIMO (802.11g with MIMO MRC)	Belkin Pre-N (802.11g with True MIMO™)
Speed*	11Mbps link rate/baseline	5x faster than 802.11b*	10x faster than 802.11b*	10x faster than 802.11b*	15x faster than 802.11b*
Frequency	Common household devices such as cordless phones and microwave ovens may interfere with the unlicensed band 2.4GHz	Common household devices such as cordless phones and microwave ovens may interfere with the unlicensed band 2.4GHz	Common household devices such as cordless phones and microwave ovens may interfere with the unlicensed band 2.4GHz	Common household devices such as cordless phones and microwave ovens may interfere with the unlicensed band 2.4GHz	Common household devices such as cordless phones and microwave ovens may interfere with the unlicensed band 2.4GHz
Compatibility	Compatible with 802.11g	Compatible with 802.11b/g	Compatible with 802.11b/g	Compatible with 802.11b/g	Compatible with 802.11g or 802.11b
Coverage*	Typically 100–200 ft.* indoors	Up to 400 ft.*	Up to 700 ft.*	Up to 1,000 ft.*	Up to 1,400 ft.*
Advantage	Mature—legacy technology	Common—widespread use for Internet sharing	Enhanced speed and coverage	Better coverage and consistent speed and range	Leading edge—best coverage and throughput

\*Distance and connection speeds will vary depending on your networking environment.

1

2

3

4

5

6

7

8

9

10

section



## Technical Support

You can find technical support information at [www.belkin.com](http://www.belkin.com) or [www.belkin.com/networking](http://www.belkin.com/networking). If you want to contact technical support by phone, please call:

**US: 877-736-5771**  
**310-898-1100 ext. 2263**

**Europe: 00 800 223 55 460**

**Australia: 1800 235 546**

**New Zealand: 0800 235 546**

**Singapore: 800 616 1790**

## FCC Statement

### DECLARATION OF CONFORMITY WITH FCC RULES FOR ELECTROMAGNETIC COMPATIBILITY

We, Belkin Corporation, of 501 West Walnut Street,  
Compton, CA 90220, declare under our sole  
responsibility that the product,

F5D9230-4

to which this declaration relates,  
complies with Part 15 of the FCC Rules. Operation is  
subject to the following two conditions: (1) this device  
may not cause harmful interference, and (2) this device  
must accept any interference received, including  
interference that may cause undesired operation.

### Caution: Exposure to Radio Frequency Radiation.

This equipment complies with FCC radiation exposure limits set forth for an uncontrolled environment. This equipment should be installed and operated with minimum distance 20cm between the radiator & your body.

This transmitter must not be co-located or operating in conjunction with any other antenna or transmitter.

Belkin declares that F5D9230-4 ( FCC ID: K7SF5D9230-4 ) is limited in CH1~CH11 for 2.4 GHz by specified firmware controlled in U.S.A.

### Federal Communications Commission Notice

This equipment has been tested and found to comply with the limits for a Class B digital device, pursuant to Part 15 of the FCC Rules. These limits are designed to provide reasonable protection against harmful interference in a residential installation.

This equipment generates, uses, and can radiate radio frequency energy. If this equipment does cause harmful interference to radio or television reception, which can be determined by turning the equipment off and on, the user is encouraged to try and correct the interference by one or more of the following measures:

- Reorient or relocate the receiving antenna.
- Increase the distance between the equipment and the receiver.
- Connect the equipment to an outlet on a circuit different from that to which the receiver is connected.
- Consult the dealer or an experienced radio/TV technician for help.

## Modifications

The FCC requires the user to be notified that any changes or modifications to this device that are not expressly approved by Belkin Corporation may void the user's authority to operate the equipment.

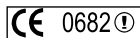
## Canada-Industry Canada (IC)

The wireless radio of this device complies with RSS 210 Industry Canada. This Class B digital apparatus complies with Canadian ICES-003.

Cet appareil numérique de la classe B conforme à la norme NMB-003 du Canada.

## Europe-European Union Notice

Radio products with the CE 0682 or CE alert marking comply with the R&TTE Directive (1995/5/EC) issued by the Commission of the European Community.



Compliance with this directive implies conformity to the following European Norms (in brackets are the equivalent international standards).

- EN 60950 (IEC60950) – Product Safety
- EN 300 328 Technical requirement for radio equipment
- ETS 300 826 General EMC requirements for radio equipment.



To determine the type of transmitter, check the identification label on your Belkin product.

Products with the CE marking comply with the EMC Directive (89/336/EEC) and the Low Voltage Directive (72/23/EEC) issued by the Commission of the European Community. Compliance with these directives implies conformity to the following European Norms (in brackets are the equivalent international standards).

- EN 55022 (CISPR 22) – Electromagnetic Interference
- EN 55024 (IEC61000-4-2,3,4,5,6,8,11) – Electromagnetic Immunity
- EN 61000-3-2 (IEC610000-3-2) – Power Line Harmonics
- EN 61000-3-3 (IEC610000) – Power Line Flicker
- EN 60950 (IEC60950) – Product Safety



Products that contain the radio transmitter are labeled with CE 0682 or CE alert marking and may also carry the CE logo.

## Belkin Corporation Limited Lifetime Product Warranty

### What this warranty covers.

Belkin Corporation warrants to the original purchaser of this Belkin product that the product shall be free of defects in design, assembly, material, or workmanship.

### What the period of coverage is.

Belkin Corporation warrants the Belkin product for the lifetime of the product.

### What will we do to correct problems?

#### *Product Warranty.*

Belkin will repair or replace, at its option, any defective product free of charge (except for shipping charges for the product).

### What is not covered by this warranty?

All above warranties are null and void if the Belkin product is not provided to Belkin Corporation for inspection upon Belkin's request at the sole expense of the purchaser, or if Belkin Corporation determines that the Belkin product has been improperly installed, altered in any way, or tampered with. The Belkin Product Warranty does not protect against acts of God (other than lightning) such as flood, earthquake, war, vandalism, theft, normal-use wear and tear, erosion, depletion, obsolescence, abuse, damage due to low voltage disturbances (i.e. brownouts or sags), non-authorized program, or system equipment modification or alteration.

### How to get service.

To get service for your Belkin product you must take the following steps:

1. Contact Belkin Corporation at 501 W. Walnut St., Compton CA 90220, Attn: Customer Service, or call (800)-223-5546, within 15 days of the Occurrence. Be prepared to provide the following information:
  - a. The part number of the Belkin product.
  - b. Where you purchased the product.
  - c. When you purchased the product.
  - d. Copy of original receipt.

2. Your Belkin Customer Service Representative will then instruct you on how to forward your receipt and Belkin product and how to proceed with your claim.

Belkin Corporation reserves the right to review the damaged Belkin product. All costs of shipping the Belkin product to Belkin Corporation for inspection shall be borne solely by the purchaser. If Belkin determines, in its sole discretion, that it is impractical to ship the damaged equipment to Belkin Corporation, Belkin may designate, in its sole discretion, an equipment repair facility to inspect and estimate the cost to repair such equipment. The cost, if any, of shipping the equipment to and from such repair facility and of such estimate shall be borne solely by the purchaser. Damaged equipment must remain available for inspection until the claim is finalized. Whenever claims are settled, Belkin Corporation reserves the right to be subrogated under any existing insurance policies the purchaser may have.

#### **How state law relates to the warranty.**

THIS WARRANTY CONTAINS THE SOLE WARRANTY OF BELKIN CORPORATION, THERE ARE NO OTHER WARRANTIES, EXPRESSED OR, EXCEPT AS REQUIRED BY LAW, IMPLIED, INCLUDING THE IMPLIED WARRANTY OR CONDITION OF QUALITY, MERCHANTABILITY OR FITNESS FOR A PARTICULAR PURPOSE, AND SUCH IMPLIED WARRANTIES, IF ANY, ARE LIMITED IN DURATION TO THE TERM OF THIS WARRANTY.

Some states do not allow limitations on how long an implied warranty lasts, so the above limitations may not apply to you.

IN NO EVENT SHALL BELKIN CORPORATION BE LIABLE FOR INCIDENTAL, SPECIAL, DIRECT, INDIRECT, CONSEQUENTIAL OR MULTIPLE DAMAGES SUCH AS, BUT NOT LIMITED TO, LOST BUSINESS OR PROFITS ARISING OUT OF THE SALE OR USE OF ANY BELKIN PRODUCT, EVEN IF ADVISED OF THE POSSIBILITY OF SUCH DAMAGES.

This warranty gives you specific legal rights, and you may also have other rights, which may vary from state to state. Some states do not allow the exclusion or limitation of incidental, consequential, or other damages, so the above limitations may not apply to you.

## Wi-Fi® Interoperability Certificate

<b>Wi-Fi® Interoperability Certificate</b>	<b>Certification ID:</b> WFA3939
--	-------------------------------------



This certificate represents the capabilities and features that have passed the interoperability testing governed by the Wi-Fi Alliance. Detailed descriptions of these features can be found at [www.wi-fi.org/certificate](http://www.wi-fi.org/certificate)

**Certification Date:** September 15, 2005  
**Category:** Access Point  
**Company:** Belkin Components  
**Product:** Belkin Wireless G Plus MIMO Router  
**Model/SKU#:** F5D9230-4

**This product has passed Wi-Fi certification testing for the following standards:**

IEEE Standard	Security
802.11b	WPA™ - Personal
802.11g	WPA™ - Enterprise
	WPA2™ - Personal
	WPA2™ - Enterprise

## Information

---

### IC statement

Operation is subject to the following two conditions:

- 1) This device may not cause interference and
- 2) This device must accept any interference, including interference that may cause undesired operation of the device.

### IMPORTANT NOTE:

#### IC Radiation Exposure Statement:

This equipment complies with IC radiation exposure limits set forth for an uncontrolled environment. End users must follow the specific operating instructions for satisfying RF exposure compliance. This equipment should be installed and operated with minimum distance 20cm between the radiator & your body.

This transmitter must not be co-located or operating in conjunction with any other antenna or transmitter.