

Utilities Tab

This screen lets you manage different parameters of the Router and perform certain administrative functions.

The screenshot displays the Belkin Cable/DSL Gateway Router Setup Utility web interface. At the top, the Belkin logo is on the left, and the title "Cable/DSL Gateway Router Setup Utility" is in the center. On the right, there are links for "Home | Help | Logout" and "Internet Status: [See Configuration](#)".

The left sidebar contains a navigation menu with the following items: LAN Setup, LAN Settings, DHCP Client List, Internet WAN, Connection Type, DNS, MAC Address, Wireless, Channel and SSID, Security, Use as Access Point, Firewall, Virtual Servers, Client IP Filters, MAC Address Filtering, DMZ, WAN Ping Blocking, Security Log, Utilities (highlighted), Restart Router, Restore Factory Default, Save/Backup Settings, Restore Previous Settings, Firmware Update, and System Settings.

The main content area is titled "Utilities >". Below the title, a paragraph states: "This screen lets you manage different parameters of the Router and perform certain administrative functions." Below this paragraph is a list of utility functions:

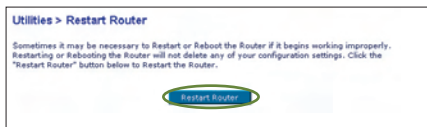
- **Restart Router**
Sometimes it may be necessary to Reset or Reboot the Router if it begins working improperly. Resetting or Rebooting the Router will not delete any of your configuration settings.
- **Restore Factory Defaults**
Using this option will restore all of the settings in the Router to the factory (default) settings. It is recommended that you backup your settings before you restore all of the defaults.
- **Save/Backup Current Settings**
You can save your current configuration by using this feature. Saving your configuration will allow you to restore it later if your settings are lost or changed. It is recommended that you backup your current configuration before performing a firmware update.
- **Restore Previous Saved Settings**
This option will allow you to restore a previously saved configuration.
- **Firmware Update**
From time to time, Belkin may release new versions of the Router's firmware. Firmware updates contain feature improvements and fixes to problems that may have existed.
- **System Settings**
The System Settings page is where you can enter a new administrator password, set the time zone, enable remote management and turn on and off the NAT function of the Router.

Restarting the Router

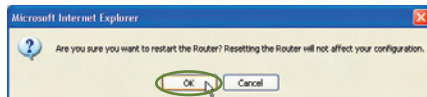
Sometimes it may be necessary to restart or reboot the Router if it begins working improperly. Restarting or rebooting the Router will NOT delete any of your configuration settings.

Restarting the Router to Restore Normal Operation

1. Click the “Restart Router” button.



2. The following message will appear. Click “OK”.



3. The following message will appear. Restarting the Router can take up to 25 seconds. It is important not to turn off the power to the Router during the restart.



4. A 25-second countdown will appear on the screen. When the countdown reaches zero, the Router will be restarted. The Router’s home page should appear automatically. If not, type in the Router’s address (default = 192.168.2.1) into the navigation bar of your browser.

Using the Web-Based Advanced User Interface

Restoring Factory Default Settings

Using this option will restore all of the settings in the Router to the factory (default) settings. It is recommended that you back up your settings before you restore all of the defaults.

1. Click the “Restore Defaults” button.



2. The following message will appear. Click “OK”.



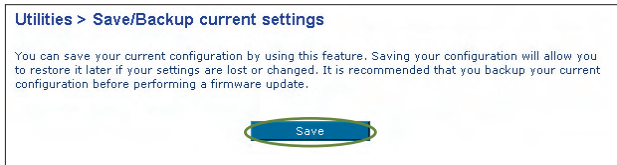
3. The following message will appear. Restoring the defaults includes restarting the Router. It can take up to 25 seconds. It is important not to turn the power to the Router off during the restart.



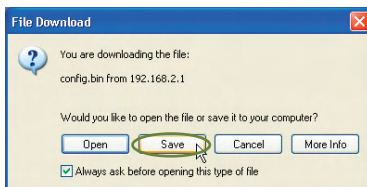
4. A 25-second countdown will appear on the screen. When the countdown reaches zero, the Router’s defaults will be restored. The Router’s home page should appear automatically. If it does not, type in the Router’s address (default = 192.168.2.1) into the navigation bar of your browser.

Saving a Current Configuration

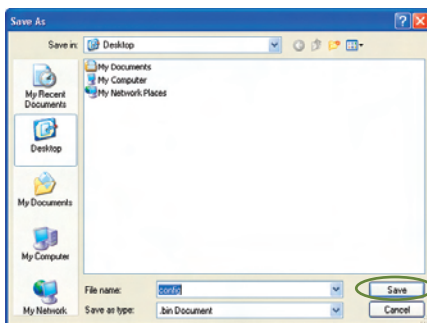
You can save your current configuration by using this feature. Saving your configuration will allow you to restore it later if your settings are lost or changed. It is recommended that you back up your current configuration before performing a firmware update.



1. Click "Save". A window called "File Download" will open. Click "Save".



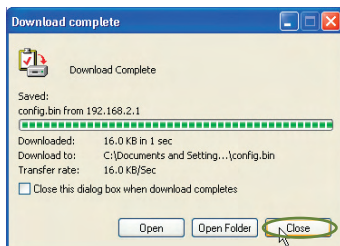
2. A window will open that allows you to select the location where you want to save the configuration file. Select a location. You can name the file anything you want, or use the default name "Config". Be sure to name the file so you can locate it yourself later. When you have selected the location and name of the file, click "Save".



Using the Web-Based Advanced User Interface

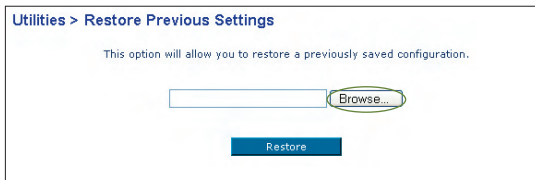
- When the save is complete, you will see the following window. Click “Close”.

The configuration is now saved.

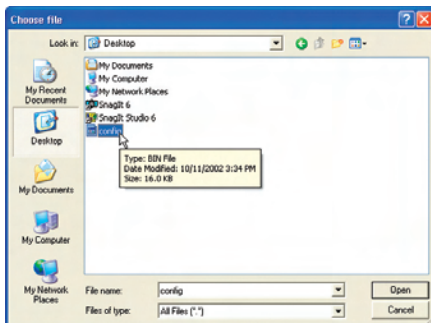


Restoring a Previous Configuration

This option will allow you to restore a previously saved configuration.



- Click “Browse”. A window will open that allows you to select the location of the configuration file. All configuration files end with a “.bin”. Locate the configuration file you want to restore and double-click on it.



Using the Web-Based Advanced User Interface

1

2

3

4

5

6

7

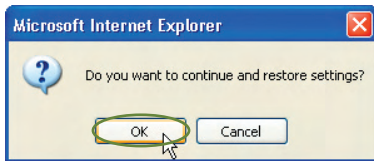
8

9

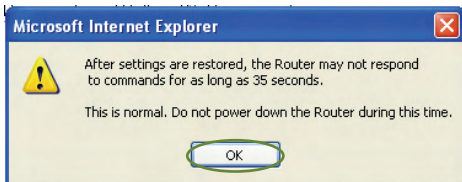
10

section

2. You will be asked if you want to continue. Click “OK”.



3. A reminder window will appear. It will take up to 35 seconds for the configuration restoration to complete. Click “OK”.



4. A 35-second countdown will appear on the screen. When the countdown reaches zero, the Router’s configuration will be restored. The Router’s home page should appear automatically. If not, type in the Router’s address (default = 192.168.2.1) into the navigation bar of your browser.

Using the Web-Based Advanced User Interface

Updating the Firmware

From time to time, Belkin may release new versions of the Router's firmware. Firmware updates contain feature improvements and fixes to problems that may exist. When Belkin releases new firmware, you can download the firmware from the Belkin update website and update your Router's firmware to the latest version.

Searching for a New Version of Firmware

From <http://www.belkin.com/support/downloads.asp>, type in the Belkin part number "F5D7231-4" in the "Search" field. Click "Search".

BELKIN. Connecting people with technology

Home | Log In/Register | Track Your Order | View Cart | Belkin Wizards | Where to Buy | Product Registration | About Us | Press Room | Contact Us | Jobs

Search:

Advanced Search

Support
We're here to help!
Need help setting up your Belkin Product?
[Click here for easy-to-use setup guides.](#)

Contact Us:
→ By Phone (North America)
→ By Phone (International)
→ E-mail

Search by part number, name or browser below:

Providing your product's model number will filter search results. Type on [Google](#).

Browse Sections

- Warranty Support
- Networking Support
- Adapters
- Bluetooth
- Computer Accessories
- Gaming (Including Profits)
- Keyboards & Mice
- Mac (older products)
- PDA
- Packs
- UPS
- Auto Switches
- Cellular Accessories
- Firmware/IEEE 1394
- IPad accessories
- KVM
- Networking
- PureAV
- Surge
- USB

From the results page, click "F5D7231-4 Firmware update - North America"

BELKIN. Connecting people with technology

Home | Log In/Register | Track Your Order | View Cart | Belkin Wizards | Where to Buy | Product Registration | About Us | Press Room | Contact Us | Jobs

Search:

Advanced Search

High-Speed Mode Wireless G Router

Downloadable Flash Install Guides

- [Need help setting up your router?](#)
- [Need help setting up your Wireless Pre-N Notebook Card?](#)
- [Need help setting up your F5D7632-4 Modem / Router?](#)
- [Need help with the F5D7000 Wireless Network Adapter on Windows 98?](#)
- [Need help with the F5D7010 Wireless Notebook Adapter on Windows 98?](#)
- [Need help with the F5D7010 Wireless Notebook Adapter on Windows XP?](#)
- [Need help with the F5D7050?](#)

Manuals and Drivers

OS	Download/Version	Rev	Date	Size
Any	F5D7231-4 Firmware update - North America	5.01.05	1/23/2004	3.66 Mbytes
Any	F5D7231-4 Manual	5.01.05	1/23/2004	1.83 Mbytes
Any	F5D7231-4 Manual		1/27/2006	25.08 Mbytes

FAQ's

- [F5D7231-4P - I can't print from one of the computers on my network. What do I do?](#) - 6/16/2004
- [F5D7231-4P - Getting the error message, "Cannot find the Router" when running the Wizard](#) - 6/16/2004

Contact Us

- By Phone (North America)
- By Email

Using the Web-Based Advanced User Interface

1

2

3

4

5

6

7

8

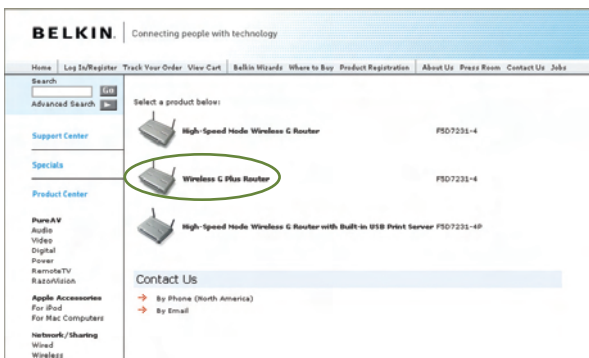
9

10

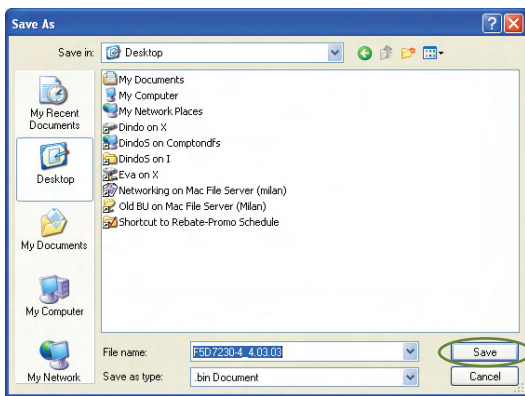
section

Downloading a New Version of Firmware

You will now be taken to the download page of “F5D7231-4 Firmware update - North America”.

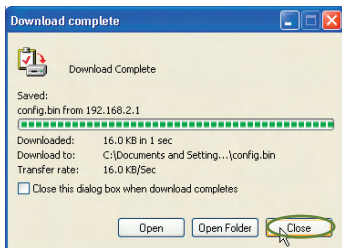


1. To download the new version of firmware, click the download logo (📄).
2. A window will open that allows you to select the location where you want to save the firmware file. Select a location. You can name the file anything you want, or use the default name. Be sure to save the file in a place where you can locate it yourself later.
Note: We suggest saving this to your desktop to make it easy to locate the file. When you have selected the location, click “Save”.



Using the Web-Based Advanced User Interface

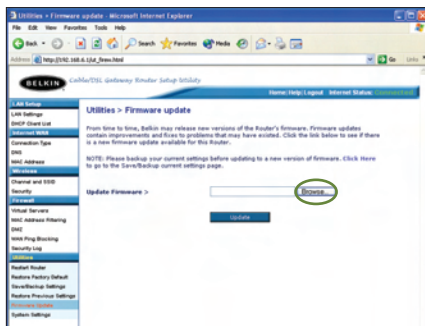
- When the save is complete, you will see the following window. Click “Close”.



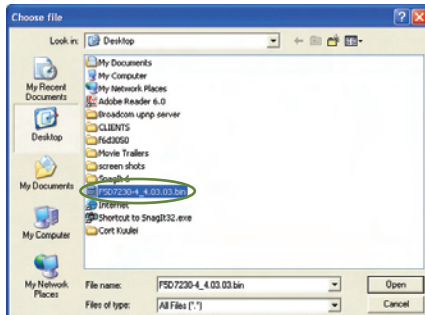
The download of the firmware is complete. To update the firmware, follow the next steps in “Updating the Router’s Firmware”.

Updating the Router’s Firmware

- In the “Firmware Update” page, click “Browse”. A window will open that allows you to select the location of the firmware update file.



- Browse to the firmware file you downloaded. Select the file by double-clicking on the file name.



Using the Web-Based Advanced User Interface

1

2

3

4

5

6

section

7

8

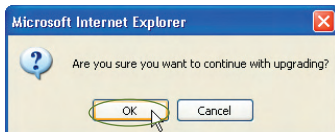
9

10

3. The “Update Firmware” box will now display the location and name of the firmware file you just selected. Click “Update”.



4. You will be asked if you are sure you want to continue. Click “OK”.



5. You will see one more message. This message tells you that the Router may not respond for as long as one minute as the firmware is loaded into the Router and the Router is rebooted. Click “OK”.



6. A 60-second countdown will appear on the screen. When the countdown reaches zero, the Router’s firmware update will be complete. The Router’s home page should appear automatically. If not, type in the Router’s address (default = 192.168.2.1) into the navigation bar of your browser.

The firmware update is complete.

Using the Web-Based Advanced User Interface

Changing System Settings

The “System Settings” page is where you can enter a new administrator password, set the time zone, enable remote management, and turn on and off the NAT function of the Router.

Setting or Changing the Administrator Password

The Router ships with NO password entered. If you wish to add a password for greater security, you can set a password here. Write down your password and keep it in a safe place, as you will need it if you need to log into the Router in the future. It is also recommended that you set a password if you plan to use the remote management feature of your Router.

Administrator Password:
The Router ships with NO password entered. If you wish to add a password for more security, you can set a password here. [More Info](#)

- **Type in current Password >**

- **Type in new Password >**

- **Confirm new Password >**

- **Login Timeout >** (1-99 minutes)

Changing the Login Time-Out Setting

The login time-out option allows you to set the period of time that you can be logged into the Router’s Web-Based Advanced User Interface. The timer starts when there has been no activity. For example, you have made some changes in the advanced setup interface, then left your computer alone without clicking “Logout”. Assuming the time-out is set to 10 minutes, then 10 minutes after you leave, the login session will expire. You will have to log into the Router again to make any more changes. The login time-out option is for security purposes and the default is set to 10 minutes.

Note: Only one computer can be logged into the Router’s Web-Based Advanced User Interface at one time.