

BELKIN.

**Wireless G
Router**



User Manual

F5D7230-4

Table of Contents

1. Introduction	1
Benefits of a Home Network.	1
Advantages of a Wireless Network	1
Placement of your Router for Optimal Performance	2
2. Product Overview	6
Product Features	6
3. Knowing your Router	9
Package Contents	9
System Requirements.	9
Easy Install Wizard Software System Requirements	9
4. Connecting and Configuring your Router	14
5. Alternate Setup Method	24
6. Using the Web-Based Advanced User Interface	42
Changing LAN Settings.	43
Viewing the DHCP Client List Page.	45
Configuring the Wireless Network Settings.	46
Securing your Wi-Fi Network	50
WEP Setup	55
WPA Setup	59
Setting WPA/WPA2	60
Guest Access (Optional)	61
Using the Access Point Mode.	65
Configuring the Firewall	70
Setting MAC Address Filtering	73
Enabling the DMZ.	74
Utilities Tab.	76
Restarting the Router.	77
Updating the Firmware	82
7. Manually Configuring Network Settings	90
8. Recommended Web Browser Settings	96
9. Troubleshooting	98
10. Information	117

Thank you for purchasing the Belkin Wireless G Router (the Router). The following two short sections discuss the benefits of home networking and outline best practices for maximizing your wireless home network range and performance. Please be sure to read through this User Manual completely, and pay special attention to the section entitled “Placement of your Router for Optimal Performance” on page 2.

Benefits of a Home Network

- Share one high-speed Internet connection with all the computers in your home
- Share resources, such as files and hard drives among all the connected computers in your home
- Share a single printer with the entire family
- Share documents, music, video, and digital pictures
- Store, retrieve, and copy files from one computer to another
- Simultaneously play games online, check Internet email, and chat

Advantages of a Wireless Network

Mobility – you no longer need a dedicated “computer room”—now you can work on a networked laptop or desktop computer anywhere within your wireless range

Easy installation – The Belkin Easy Installation Wizard makes setup simple

Flexibility – set up and access printers, computers, and other networking devices from anywhere in your home

Easy expansion – the wide range of Belkin networking products let you expand your network to include devices such as printers and gaming consoles

No cabling required – you can spare the expense and hassle of retrofitting Ethernet cabling throughout the home or office

Widespread industry acceptance – choose from a wide range of interoperable networking products

Placement of your Router for Optimal Performance

Important Factors for Placement and Setup

Your wireless connection will be stronger the closer your computer is to your Router. Typical indoor operating range for wireless devices is between 100 and 200 feet.

In the same way, your wireless connection and performance will degrade somewhat as the distance between your Router and connected devices increases. This may or may not be noticeable to you. As you move farther from your Router, connection speed may decrease. Factors that can weaken signals simply by getting in the way of your network's radio waves are metal appliances or obstructions, and walls.

If you have concerns about your network's performance that might be related to range or obstruction factors, try moving the computer to a position between five and 10 feet away from the Router in order to see if distance is the problem. If difficulties persist even at close range, please contact Belkin Technical Support.

Note: While some of the items listed below can affect network performance, they will not prohibit your wireless network from functioning; if you are concerned that your network is not operating at its maximum effectiveness, this checklist may help.

1. Wireless Router Placement

Place your Router, the central connection point of your network, as close as possible to the center of your wireless network devices.

To achieve the best wireless network coverage for your "wireless clients" (i.e., computers enabled by Belkin Wireless Notebook Network Cards, Wireless Desktop Network Cards, and Wireless USB Adapters):

- Ensure that your Router's networking antennas are parallel to each other, and are positioned vertically (toward the ceiling). If your Router itself is positioned vertically, point the antennas as much as possible in an upward direction.
- In multistory homes, place the Router on a floor that is as close to the center of the home as possible. This may mean placing the Router on an upper floor.
- Try not to place the Router near a cordless phone.

2. Avoid Obstacles and Interference

Avoid placing your Router near devices that may emit radio “noise,” such as microwave ovens. Dense objects that can inhibit wireless communication include:

- Refrigerators
- Washers and/or dryers
- Metal cabinets
- Large aquariums
- Metallic-based, UV-tinted windows

If your wireless signal seems weak in some spots, make sure that objects such as these are not blocking the signal’s path (between your computers and Router).

3. Cordless Phones

If the performance of your wireless network is impaired after attending to the above issues, and you have a cordless phone:

- Try moving cordless phones away from the Router and your wireless-enabled computers.
- Unplug and remove the battery from any cordless phone that operates on the 2.4GHz band (check the manufacturer’s information). If this fixes the problem, your phone may be interfering.
- If your phone supports channel selection, change the channel on the phone to the farthest channel from your wireless network. For example, change the phone to channel 1 and move your Router to channel 11. See your phone’s user manual for detailed instructions.
- If necessary, consider switching to a 900MHz cordless phone.

4. Choose the “Quietest” Channel for your Wireless Network

In locations where homes or offices are close together, such as apartment buildings or office complexes, there may be wireless networks nearby that can conflict with yours.

Use the Site Survey capabilities found in the wireless utility of your wireless adapter or card to locate any other wireless networks that are available (see your wireless adapter’s or card’s user manual), and move your Router and computers to a channel as far away from other networks as possible.

- Experiment with more than one of the available channels in order to find the clearest connection and avoid interference from neighboring cordless phones or other wireless devices.
- For Belkin wireless networking products, use the detailed Site Survey and wireless channel information included with your Wireless Network Card. See your Network Card's user guide for more information.

These guidelines should allow you to cover the maximum possible area with your Router. Should you need to cover an even wider area, we suggest the Belkin Wireless G Range Extender/ Access Point.

5. Secure Connections, VPNs, and AOL

Secure connections typically require a user name and password, and are used where security is important. Secure connections include:

- Virtual Private Network (VPN) connections, often used to connect remotely to an office network
- The "Bring Your Own Access" program from America Online (AOL), which lets you use AOL through broadband provided by another cable or DSL service
- Most online banking websites
- Many commercial websites that require a user name and password to access your account

Secure connections can be interrupted by a computer's power management setting, which causes it to "go to sleep." The easiest solution to avoid this is to simply reconnect by rerunning the VPN or AOL software, or by re-logging into the secure website.

A second alternative is to change your computer's power management settings so it does not go to sleep; however, this may not be appropriate for portable computers. To change your power management setting under Windows, see the "Power Options" item in the Control Panel.

If you continue to have difficulty with secure connections, VPNs, and AOL, please review the steps above to be sure you have addressed these issues.

Introduction

For more information regarding our networking products, visit our website at www.belkin.com/networking or call Belkin Technical Support at:

US: 877-736-5771

800-223-5546 ext. 2263

310-898-1100 ext. 2263

UK: 0845 607 77 87

Australia: 1800 235 546

New Zealand: 0800 235 546

Singapore: 65 64857620

Europe: www.belkin.com/support

1

2

3

4

5

6

7

8

9

10

section

Product Overview

Product Features

In minutes you will be able to share your Internet connection and network your computers. The following is a list of features that make your new Belkin Wireless G Router an ideal solution for your home or small office network.

Works with Both PCs and Mac® Computers

The Router supports a variety of networking environments including Mac OS® 9.x, X v10.x, AppleTalk®, Linux®, Windows® 98, Me, NT®, 2000, and XP, Vista™, and others. All that is needed is an Internet browser and a network adapter that supports TCP/IP (the standard language of the Internet).

Front-Panel LED Display

Lighted LEDs on the front of the Router indicate which functions are in operation. You'll know at-a-glance whether your Router is connected to the Internet. This feature eliminates the need for advanced software and status-monitoring procedures.

Web-Based Advanced User Interface

You can set up the Router's advanced functions easily through your web browser, without having to install additional software onto the computer. There are no disks to install or keep track of and, best of all, you can make changes and perform setup functions from any computer on the network quickly and easily.

NAT IP Address Sharing

Your Router employs Network Address Translation (NAT) to share the single IP address assigned to you by your Internet Service Provider while saving the cost of adding IP addresses to your Internet service account.

SPI Firewall

Your Router is equipped with a firewall that will protect your network from a wide array of common hacker attacks including IP Spoofing, Land Attack, Ping of Death (PoD), Denial of Service (DoS), IP with zero length, Smurf Attack, TCP Null Scan, SYN flood, UDP flooding, Tear Drop Attack, ICMP defect, RIP defect, and fragment flooding.

Product Overview

1

2

section

3

4

5

6

7

8

9

10

Integrated 10/100 4-Port Switch

The Router has a built-in, 4-port network switch to allow your wired computers to share printers, data and MP3 files, digital photos, and much more. The switch features automatic detection so it will adjust to the speed of connected devices. The switch will transfer data between computers and the Internet simultaneously without interrupting or consuming resources.

Universal Plug-and-Play (UPnP) Compatibility

UPnP (Universal Plug-and-Play) is a technology that offers seamless operation of voice messaging, video messaging, games, and other applications that are UPnP-compliant.

Support for VPN Pass-Through

If you connect to your office network from home using a VPN connection, your Router will allow your VPN-equipped computer to pass through the Router and to your office network.

Built-In Dynamic Host Configuration Protocol (DHCP)

Built-In Dynamic Host Configuration Protocol (DHCP) on-board makes for the easiest possible connection of a network. The DHCP server will assign IP addresses to each computer automatically so there is no need for a complicated networking setup.

Easy Install Wizard

The Easy Install Wizard takes the guesswork out of setting up your Router. This automatic software determines your network settings for you and sets up the Router for connection to your Internet Service Provider (ISP). In a matter of minutes, your Wireless Router will be up and running on the Internet.

NOTE: Easy Install Wizard software is compatible with Windows 98SE, Me, 2000, XP, Vista, and Mac OS 9.X and Mac OS X. If you are using another operating system, the Wireless Router can be set up using the Alternate Setup Method described in this User Manual (see page 24).

Product Overview

Product Features

In minutes you will be able to share your Internet connection and network your computers. The following is a list of features that make your new Belkin Wireless G Router an ideal solution for your home or small office network.

Works with Both PCs and Mac® Computers

The Router supports a variety of networking environments including Mac OS® 9.x, X v10.x, AppleTalk®, Linux®, Windows® 98, Me, NT®, 2000, XP, Vista™, and others. All that is needed is an Internet browser and a network adapter that supports TCP/IP (the standard language of the Internet).

Package Contents

- Belkin Wireless G Router
- Quick Installation Guide
- Belkin Easy Install Wizard Software CD with User Manual
- Belkin RJ45 Ethernet Networking Cable
- Power Supply

System Requirements

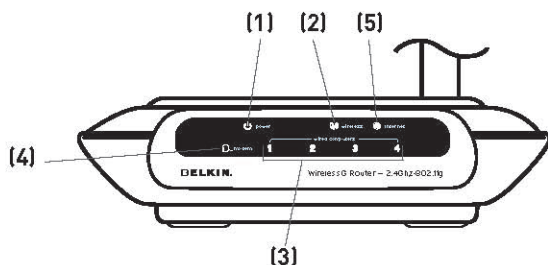
- Broadband Internet connection such as a cable or DSL modem with RJ45 (Ethernet) connection
- At least one computer with an installed network interface adapter
- TCP/IP networking protocol installed on each computer
- RJ45 Ethernet networking cable
- Internet browser

Easy Install Wizard Software System Requirements

- A PC running Windows 98SE, Me, 2000, XP, or Vista, or a Mac computer running Mac OS 9.x or OS X
- Minimum 64MB RAM
- Internet browser

Knowing your Router

The Router has been designed to be placed on a desktop. All of the cables exit from the rear of the Router for better organization and utility. The LED indicators are easily visible on the front of the Router to provide you with information about network activity and status.



1. Power/Ready LED

When you apply power to the Router or restart it, a short period of time elapses while the Router boots up. During this time, the Power/Ready LED blinks. When the Router has completely booted up, the Power/Ready LED becomes a SOLID light, indicating the Router is ready for use.

OFF	Router is OFF
Blinking Green	Router is Booting Up
Solid Green	Router is Ready

2. Wireless Network LED

OFF	Wireless Network is OFF
Green	Wireless Network is Ready
Blinking	Indicates Wireless Activity

3. Wired Computer Status LEDs

These LEDs are labeled 1–4 and correspond to the numbered ports on the rear of the Router. When a computer is properly connected to one of the wired computer ports on the rear of the Router, the LED will light. GREEN means a 10Base-T device is connected, AMBER means a 100Base-T device is connected. When information is being sent over the port, the LED blinks rapidly.

OFF	No Device is Linked to the Port
Green	10/100Base-T Device Connected
Blinking (Orange or Green)	Port Activity

4. Modem Status LED

This LED lights in GREEN to indicate that your modem is connected properly to the Router. It blinks rapidly when information is being sent over the port between the Router and the modem.

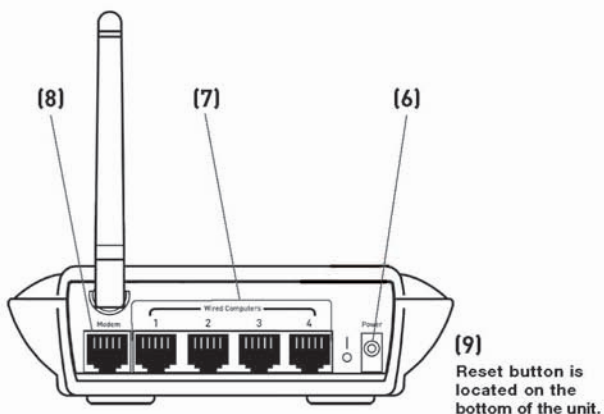
OFF	No WAN Link
Solid Green	Good WAN Link
Blinking Green	WAN Activity

5. Internet LED

This unique LED shows you when the Router is connected to the Internet. When the light is OFF, the Router is NOT connected to the Internet. When the light is blinking, the Router is attempting to connect to the Internet. When the light is solid GREEN, the Router is connected to the Internet. When using the “Disconnect after x minutes” feature, this LED becomes extremely useful in monitoring the status of your Router’s connection.

OFF	Router is not Connected to the Internet
Blinking Green	Router is Attempting to Connect to the Internet
Solid Green	Router is Connected to the Internet

Knowing your Router



6. Power Jack

Connect the included 5V DC power supply to this jack.

7. Connections to Computers (Wired Computer Ports) - BLUE

Connect your wired (non-wireless) computers to these ports. These ports are RJ45, 10/100 auto-negotiation, auto-uplinking ports for standard UTP category 5 or 6 Ethernet cable. The ports are labeled 1 through 4. These ports correspond to the numbered LEDs on the front of the Router.

8. Connection to Modem (Modem Port) - GREEN

This port is for connection to your cable or DSL modem. Use the cable that was provided with the modem to connect the modem to this port. Use of a cable other than the cable supplied with the cable modem may not work properly.

9. Reset Button

The "Reset" button is used in rare cases when the Router may function improperly. Resetting the Router will restore the Router's normal operation while maintaining the programmed settings. You can also restore the factory default settings by using the "Reset" button. Use the restore option in instances where you may have forgotten your custom password.

a. Resetting the Router

Push and release the “Reset” button. The lights on the Router will momentarily flash. The Power/Ready light will begin to blink. When the Power/Ready light becomes solid again, the reset is complete.

b. Restoring the Factory Defaults

Press and hold the “Reset” button for at least 10 seconds, then release it. The lights on the Router will momentarily flash. The Power/Ready light will begin to blink. When the Power/Ready light becomes solid again, the restore is complete.

1

2

3

4

5

6

7

8

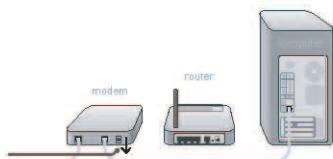
9

10

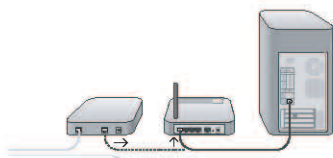
section

Connecting and Configuring your Router

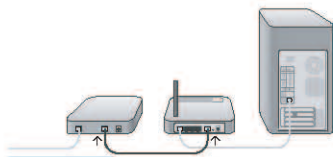
Step 1 | Hardware Connections – Follow the Quick Installation Guide (QIG)



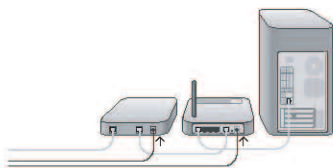
- A.** Unplug your modem's power cord. Put the Router next to the modem. Raise the Router's antennas.



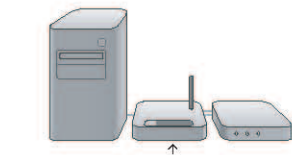
- B.** Locate the networking cable that connects your modem and computer. Unplug that cable from your modem, and plug it into any gray port on the back of the Router.



- C.** Find your new networking cable (included in the box with your Router) and connect it to the yellow port on the back of the Router. Connect the other end to your modem, in the port that's now free.



- D.** Plug in your modem's power cord. Wait 60 seconds for the modem to start up. Plug the Router's power supply into the black port on the back. Plug the other end into the wall outlet.



- E.** Wait 20 seconds for the Router to start up. Look at the display on the front of the Router. Make sure the "Wired" and "Router" icons are lit up in blue. If they are not, recheck your connections.

1

2

3

4

5

6

7

8

9

10

section

Connecting and Configuring your Router

Step 2 | Set Up the Router – Run the Setup Assistant Software

- A. Shut down any programs that are running on your computer at this time. Turn off any firewall or Internet-connection-sharing software on your computer.
- B. Insert the CD into your computer. The Setup Assistant will automatically appear on your computer's screen within 15 seconds. Click on "Go" to run the Setup Assistant. Follow the instructions there.

IMPORTANT: Run the Setup Assistant from the computer that is directly connected to the Router from Step 1 – B.



Note for Windows Users: If the Setup Assistant does not start up automatically, select your CD-ROM drive from "My Computer" and double-click on the file named "SetupAssistant" to start the Setup Assistant.

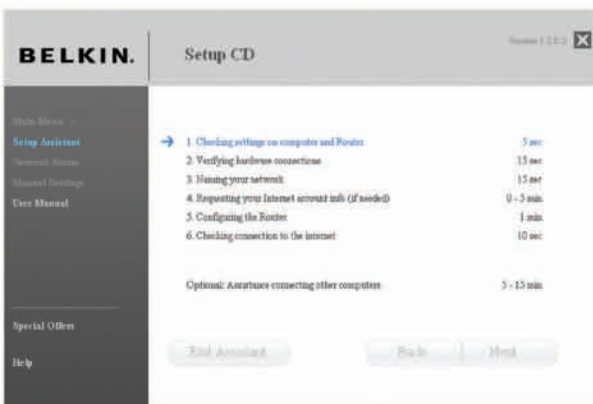
Confirmation Screen

Verify that you have completed all QIG steps by checking the box to the right of the arrow. Click "Next" to continue.



Progress Screen

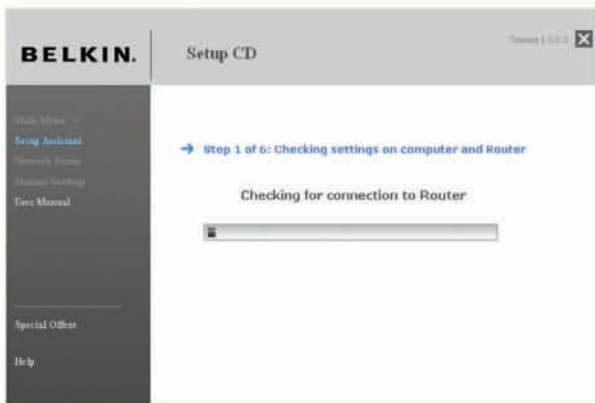
Setup Assistant will show you a progress screen each time a step in the setup has been completed.



Connecting and Configuring your Router

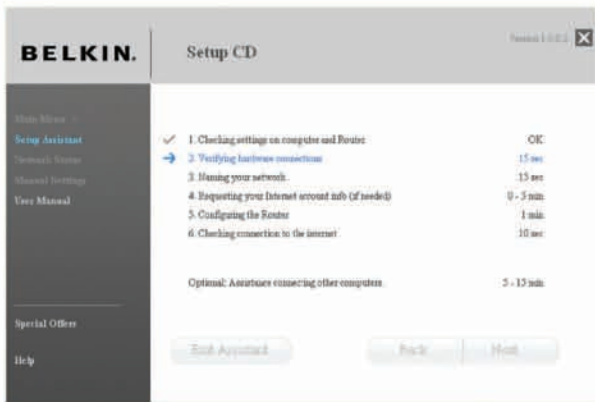
1.1 Checking Settings

The Setup Assistant will now examine your computer's network settings and gather information needed to complete the Router's connection to the Internet.



1.2 Verifying Hardware Connections

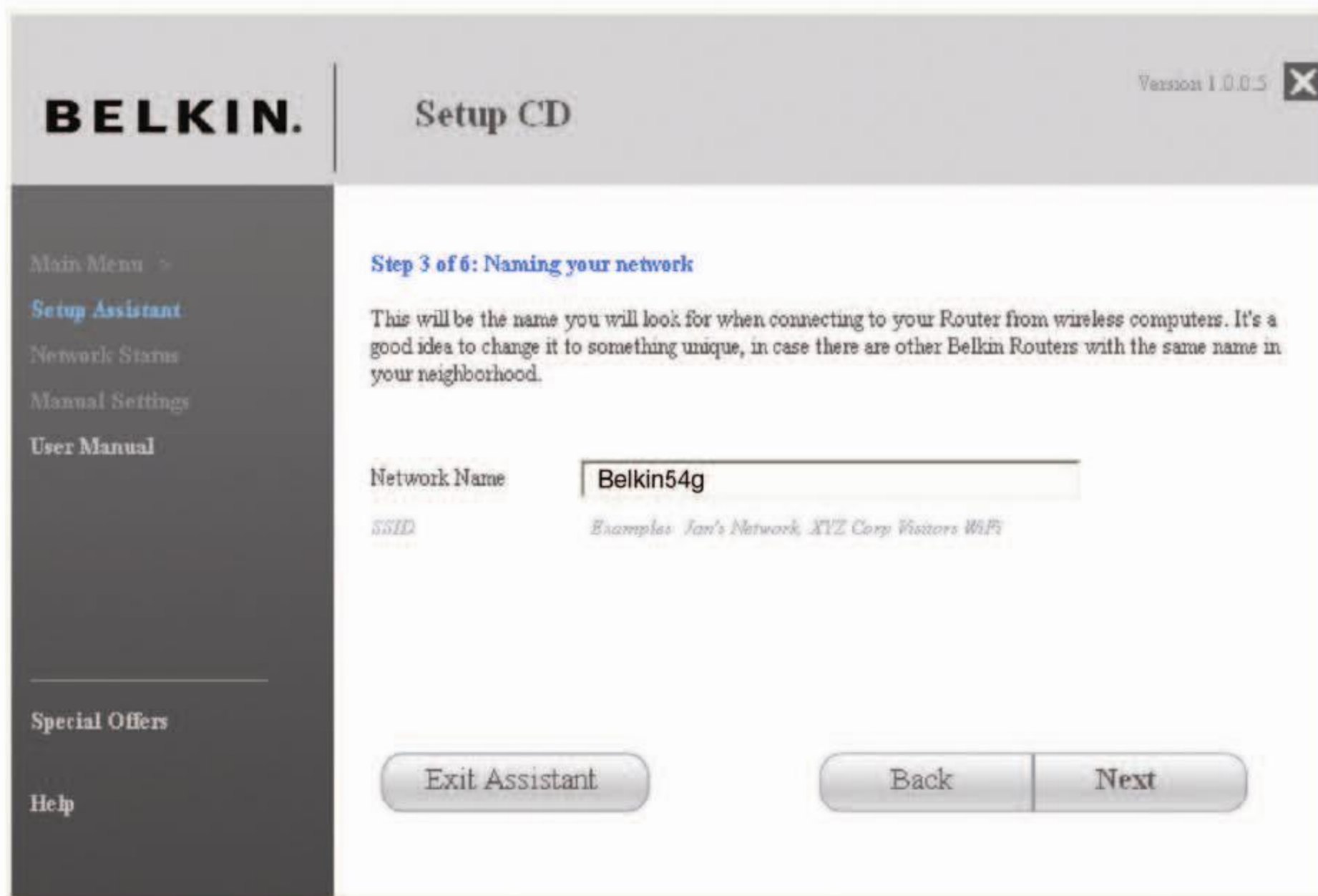
The Setup Assistant will now verify your hardware connection.



Connecting and Configuring your Router

1.3 Naming your Wireless Network

The Setup Assistant will display the default wireless network name or Service Set Identifier (SSID). This is the name of your wireless network to which your computers or devices with wireless network adapters will connect. You can either use the default or change it to something unique. Write down this name for future reference. Click “Next” to continue.



1

2

3

4

5

6

7

8

9

10

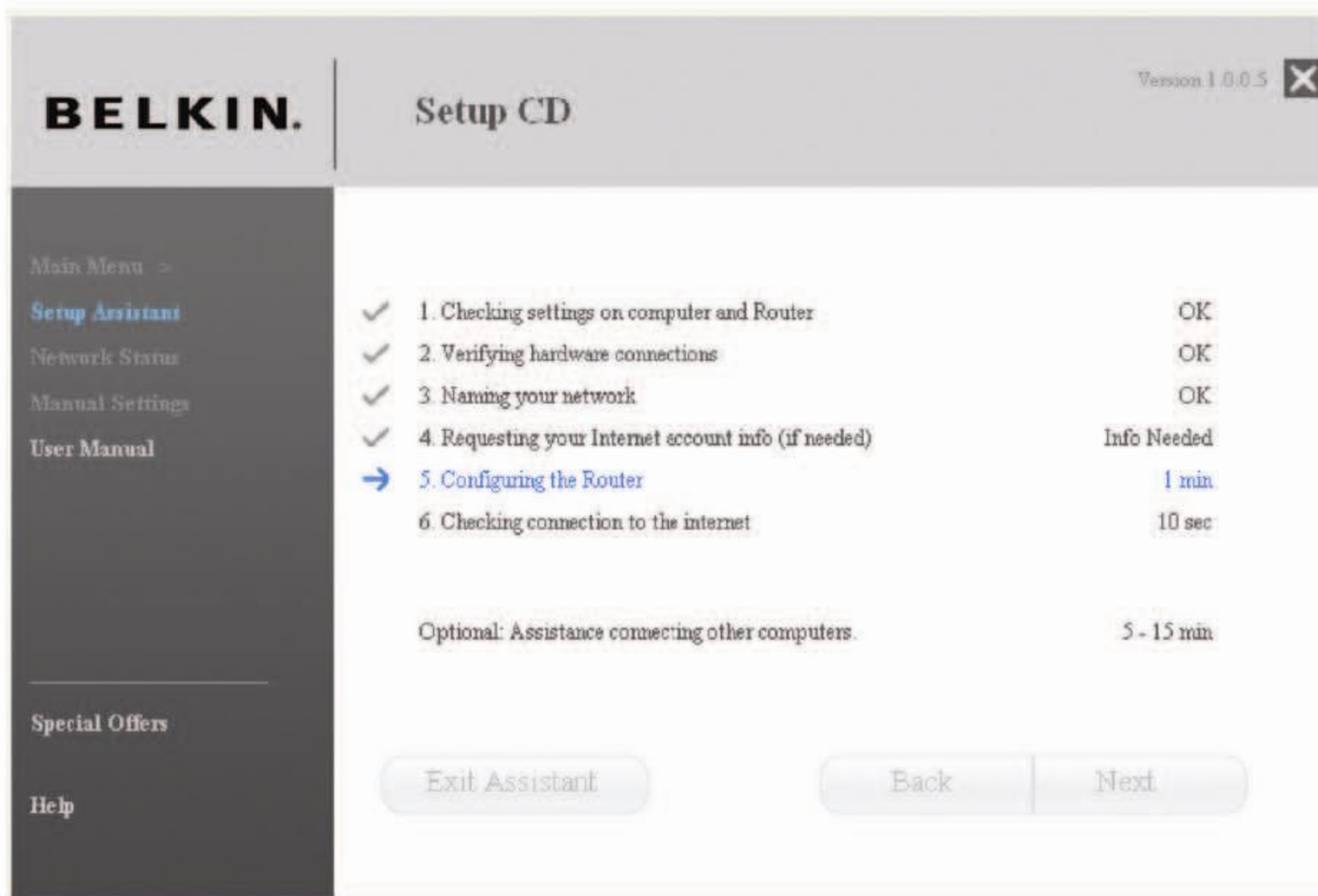
section

Connecting and Configuring your Router

1.4 Configuring the Router

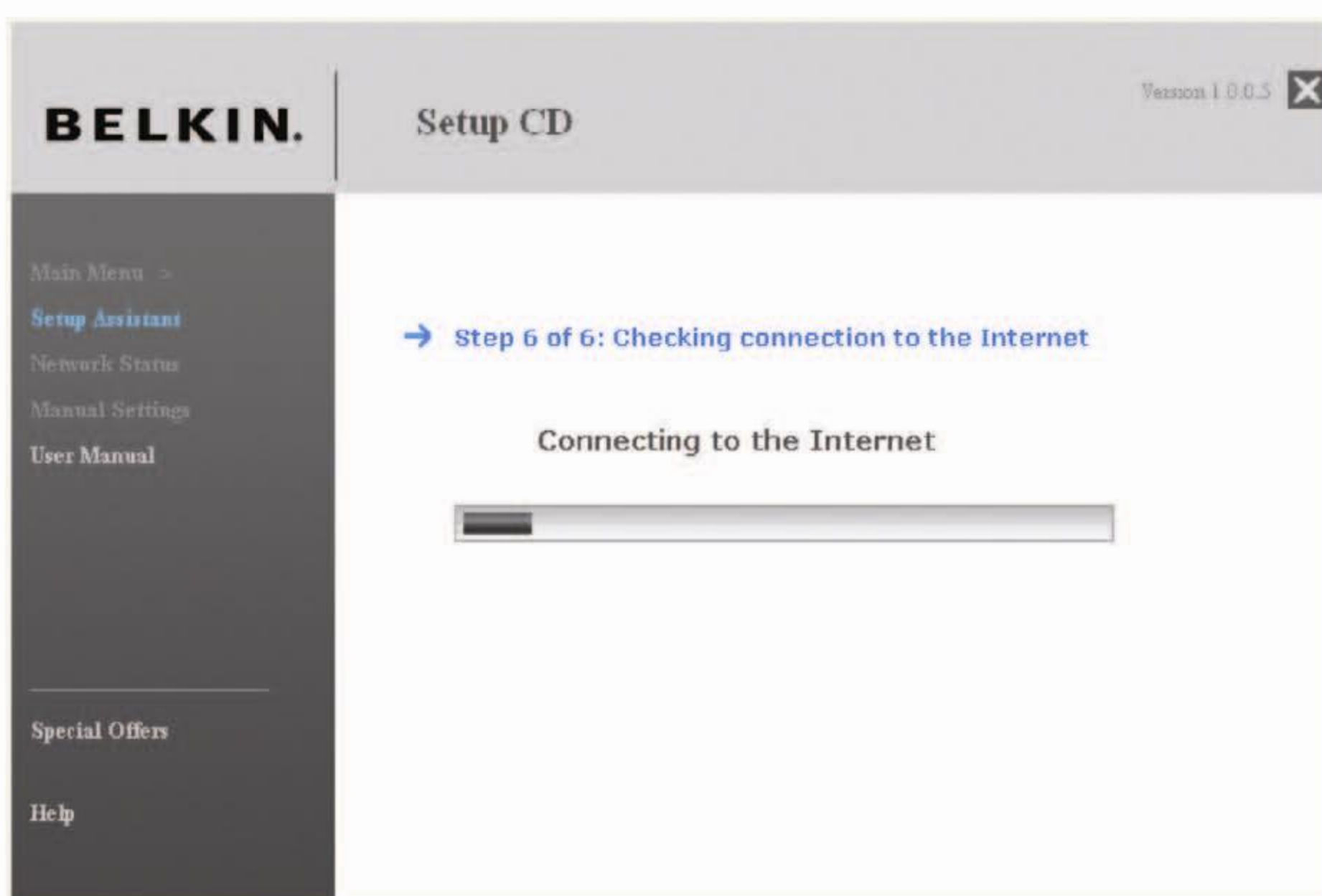
The Setup Assistant will now configure your Router by sending data to the Router and restarting it. Wait for the on-screen instructions.

Note: Do not disconnect any cable or power off the Router while the Router is rebooting. Doing so will render your Router inoperable.



1.5 Checking Internet Connection

We are almost done. The Setup Assistant will now check your connection to the Internet.



Congratulations

You have finished installing your new Belkin Router. You will see the Congratulations screen when your Router can connect to the Internet. You can begin surfing by opening your browser and going to any website.

You can use the Setup Assistant to set up your other wired and wireless computers to connect to the Internet by clicking “Next”. If you decide to add computers to your Router later, select “Exit the Assistant” and then click “Next”.



Connecting and Configuring your Router

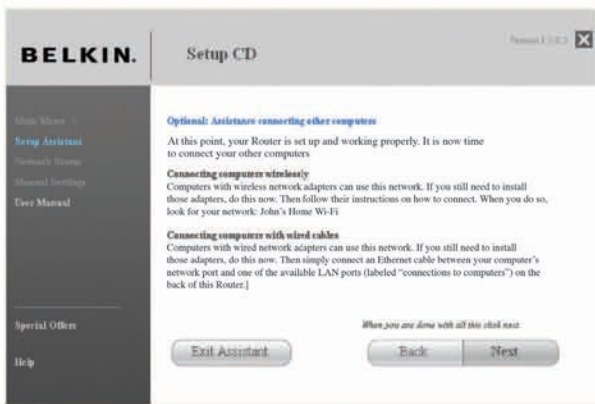
Troubleshooting

If the Setup Assistant is not able to connect to the Internet, you will see the following screen. Follow the on-screen instructions to go through the troubleshooting steps.



1.7 Optional: Assistance Connecting Other Computers

This optional step will help you to connect additional wired and wireless computers to your network. Follow the on-screen instructions.



Congratulations

Once you have verified that your other wired and wireless computers are properly connected, your network is set up and working. You can now surf the Internet. Click “Next” to take you back to the main menu.



1

2

3

4

5

6

7

8

9

10