



DIE LAYOUT

QSG - 128 GSM C2S ARTPAPER

Business Unit: NET-Networking

Program Manager:

Packaging Engineer: Brian Byrd

Retail Outside Dimension (Including Hang Tab)

L x W x D (in): 5 x 5 x 5

L x W x D (mm):127.00 x 127.00 x 127.00

DIE/MATERIAL SPECS:

Material: Please refer to drawing

Blank Size (in): 20 x 5

Blank Size (mm): 508 x 127

This dieline works for following skus (if any):

Unit: IN/MM

Side Shown: PRINT SIDE

Flute/Grain: horizontal

Tolerance:+/- 1/32" - 0.8mm

Drawing Scale 1:1

RELEASE DATE: 09/13/2018

DIELINE:

Final

LEGEND:

- Nitto Tape
- Screen Glue

THIS DOCUMENT & THE INFORMATION IN IT ARE THE CONFIDENTIAL PROPERTY OF BELKIN INTERNATIONAL AND MUST NOT BE COPIED, REPRODUCED OR USED IN ANY MANNER WITHOUT THE WRITTEN CONSENT OF BELKIN CORPORATION. IT MUST BE RETURNED UPON REQUEST

PRINT SPECS:

Color Plates:

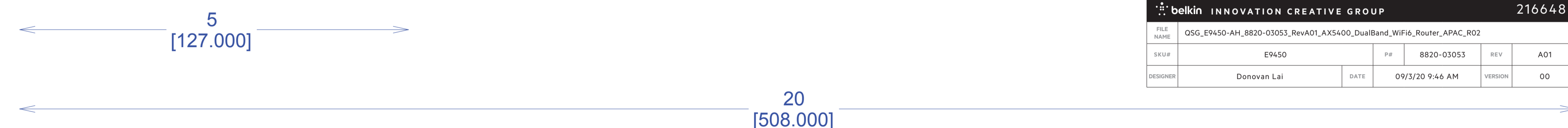
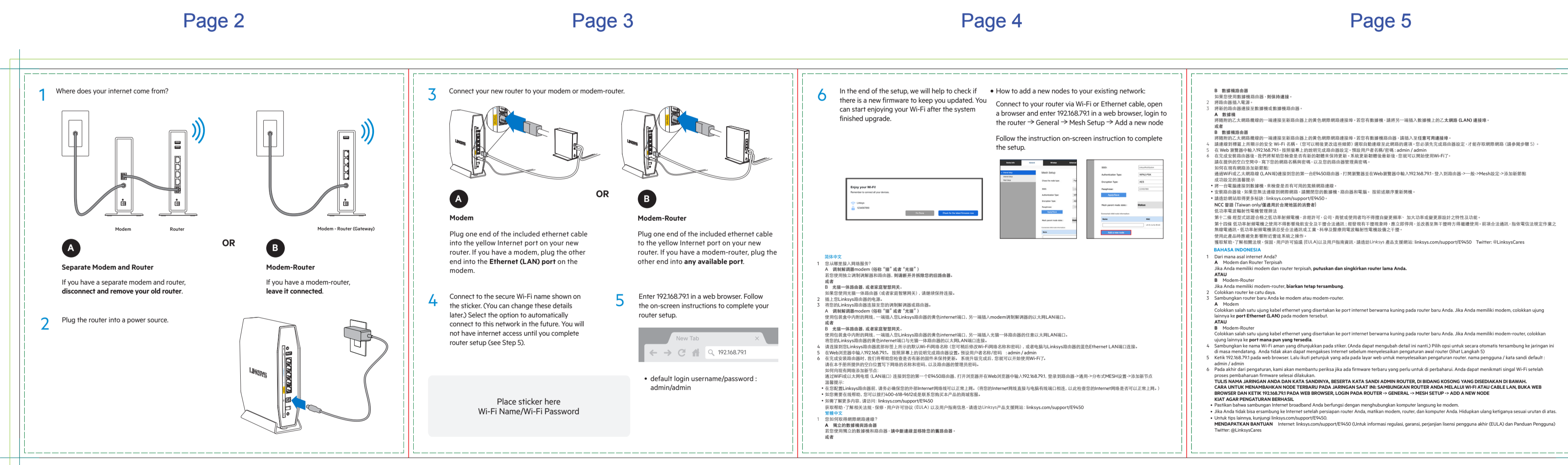
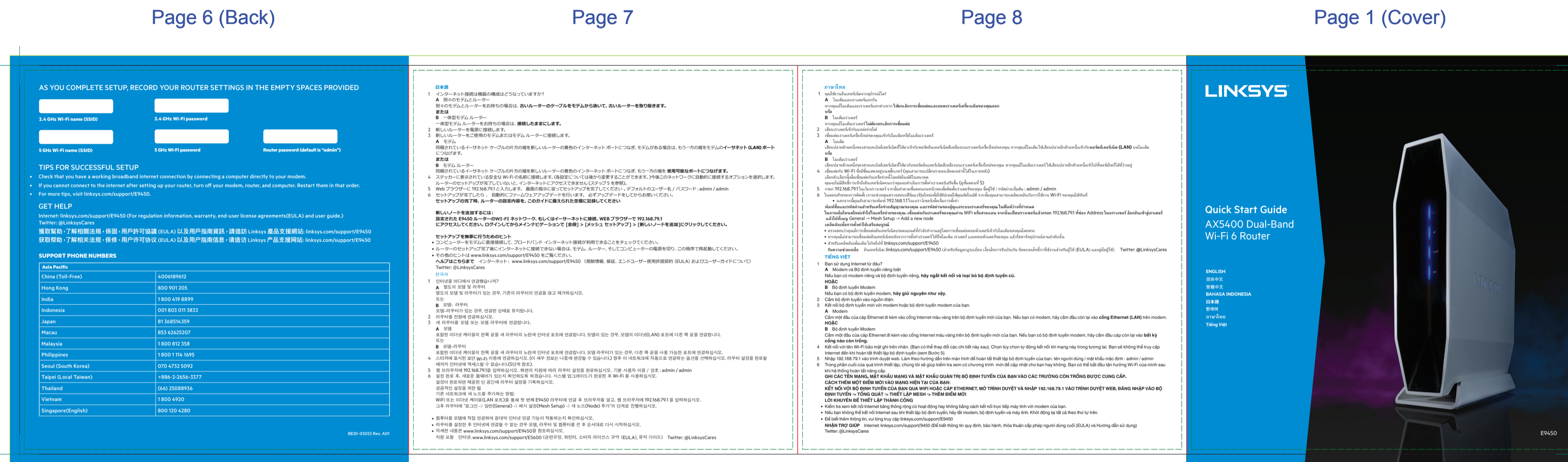
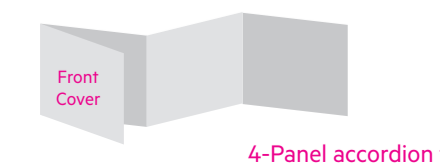


Finish:

GLOSS AQ

Notes:

ACCORDION FOLD, PRINT BOTH SIDES ALL TEXT AND GRAPHIC ELEMENTS COLOR: CMYK



belkin INNOVATION CREATIVE GROUP		216648	
FILE NAME	QSG_E9450-AH_8820-03053_RevA01_AX5400_DualBand_WiFi6_Router_APAC_R02		
SEUP	E9450	PP	8820-03053 REV A01
DESIGNER	Donovan Lai	DATE	09/31/20 9:46 AM VERSION 00

DO NOT PRINT DIE LINES, PRINTERS NOTES