

1/2

REF 13.0 dBm

AT 30 dB

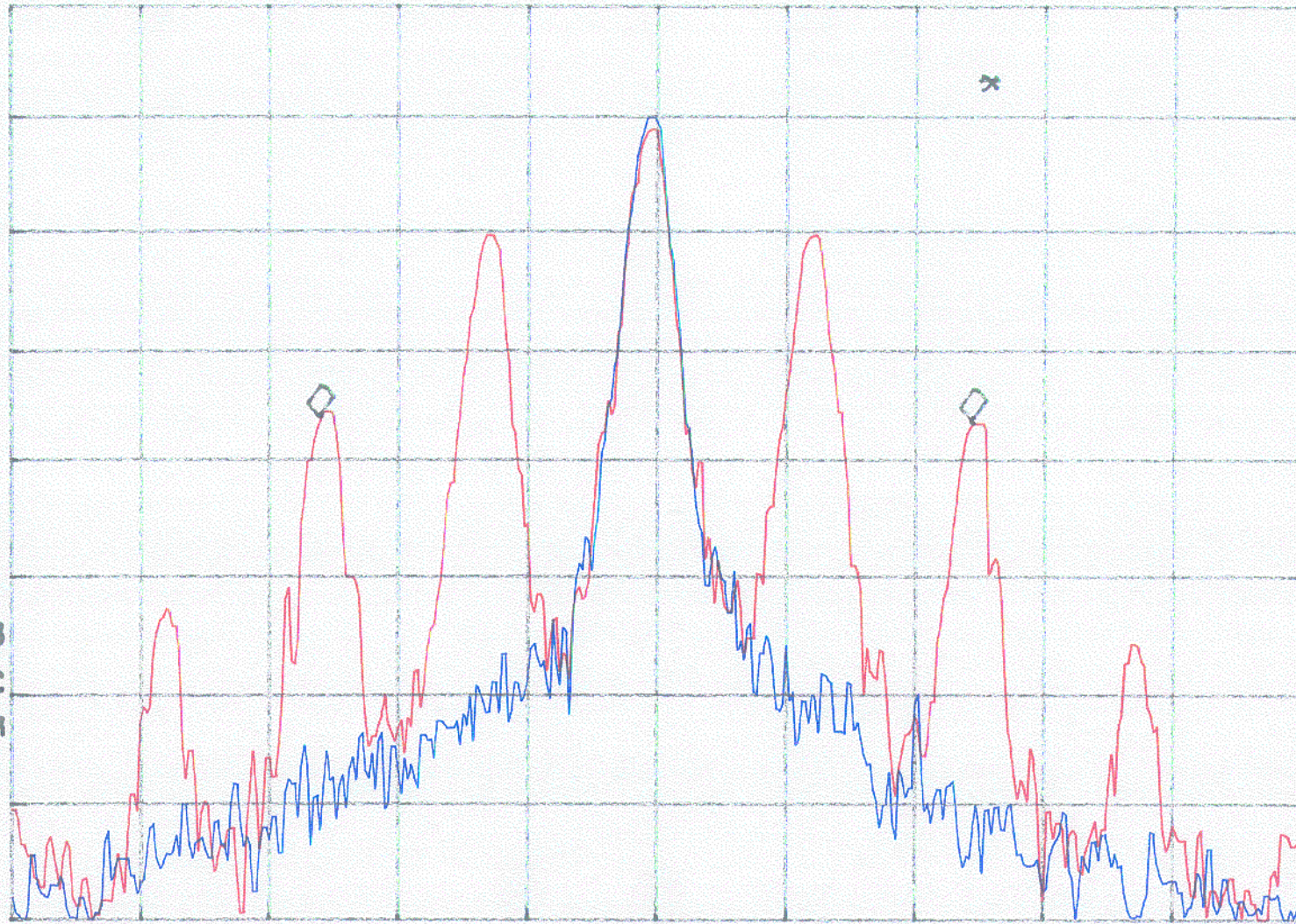
MKR 10.10 kHz

-.27 dB

PEAK
LOG
10
dB/

Red: with modulation
Blue: without modulation

VA VB
SC FC
CORR



CENTER 462.63750 MHz

RES BW 300 Hz

VBW 300 Hz

SPAN 20.00 kHz

SWP 1.00 sec

4

REF 13.0 dBm

AT 30 dB

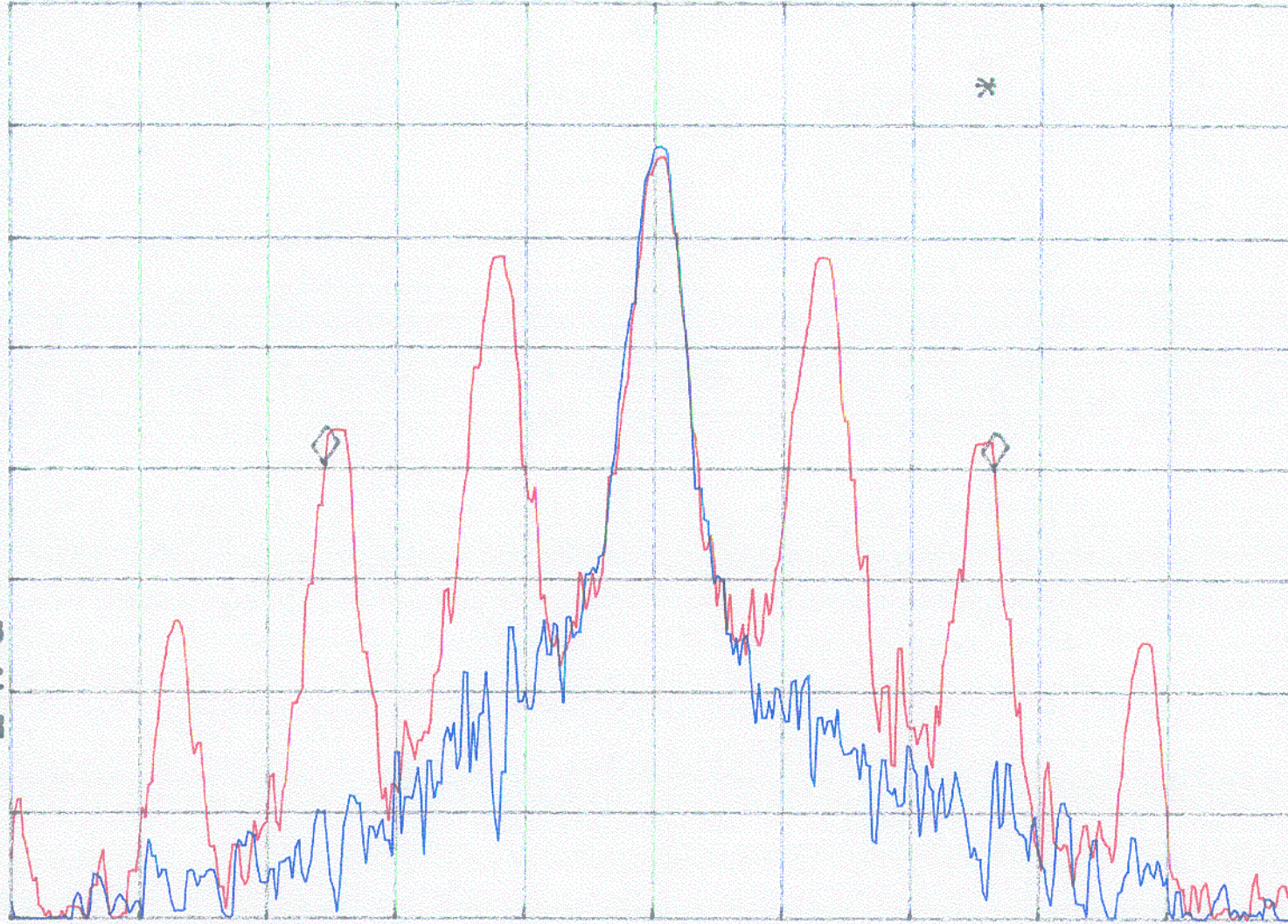
MKR 10.40 KHz

-.29 dB

PEAK
LOG
10
dB/

Red: with modulation
Blue: without modulation

VA VB
SC FC
CORR



CENTER 467.63750 MHz

#RES BW 300 Hz

VBW 300 Hz

SPAN 20.00 KHz

SWP 1.00 sec