

3/2

REF 12.0 dBm

AT 30 dB

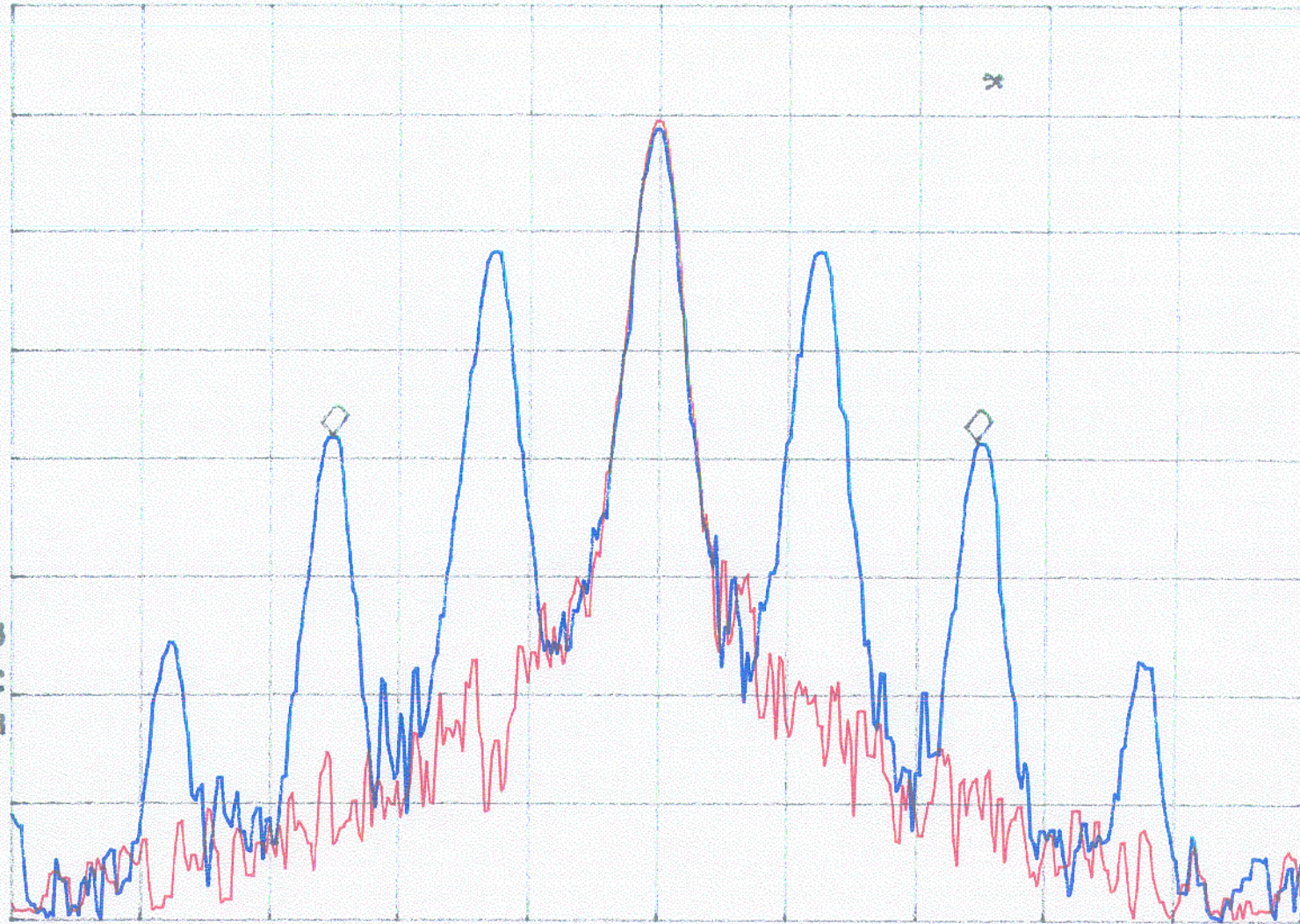
MKR 9.95 kHz

-.40 dB

PEAK  
LOG  
10  
dB/

Red: without modulation  
Blue: with modulation

VA VB  
SC FC  
CORR



CENTER 467.63750 MHz

RES BW 300 Hz

VBW 300 Hz

SPAN 20.00 kHz

SWP 1.00 sec



17

REF 11.0 dBm

AT 30 dB

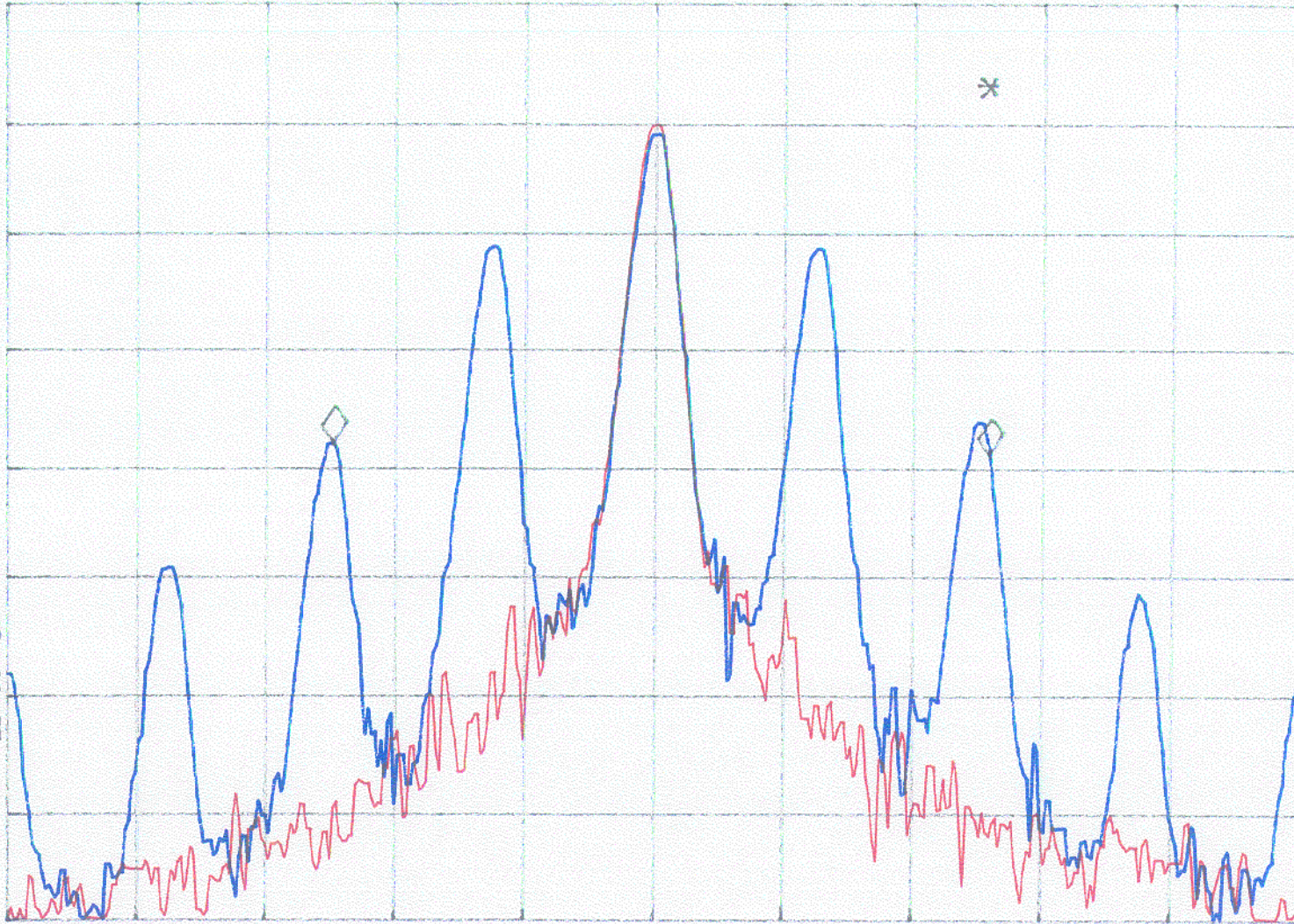
MKR 10.15 kHz

-.86 dB

PEAK  
LOG  
10  
dB/

Red: without modulation  
Blue: with modulation

VA VB  
SC FC  
CORR



CENTER 462.63750 MHz

RES BW 300 Hz

VBW 300 Hz

SPAN 20.00 kHz

SWP 1.00 sec