

System Validation - D2450V2 S/N:706

(Antenna input power: 250 mW)

SAM-2; Flat

Probe: ET3DV6 - SN1578; ConvF(4.50,4.50,4.50); Crest factor: 1.0

Head 2450MHz: $\sigma = 1.97$ mho/m $\epsilon_r = 39.6$ $\rho = 1.00$ g/cm³

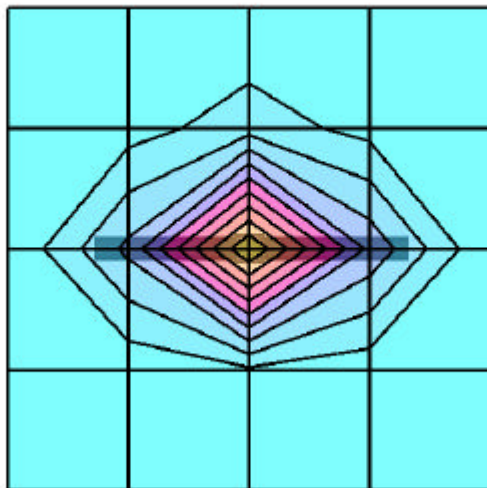
Cube 5x5x7: Peak: 29.6 mW/g, SAR (1g): 14.2 mW/g, SAR (10g): 6.53 mW/g, (Worst-case extrapolation)

Penetration depth: 6.4 (6.2, 7.0) [mm]

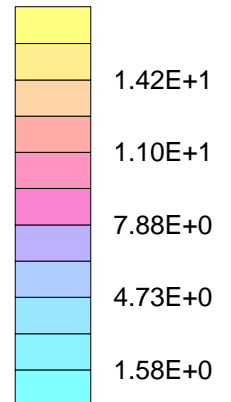
Powerdrift: 0.01 dB

Ambient Temperature (degree C): 22.0

Liquid Temperature (degree C): 20.5



SAR_{Tot} [mW/g]



System Validation - D2450V2 S/N:706

(Antenna input power: 250 mW)

SAM-2;

Probe: ET3DV6 - SN1578; ConvF(4.50,4.50,4.50); Crest factor: 1.0

Head 2450MHz: $\sigma = 1.97 \text{ mho/m}$ $\epsilon_r = 39.6$ $\rho = 1.00 \text{ g/cm}^3$

: , , ()

Penetration depth: 6.4 (6.1, 7.0) [mm]

Ambient Temperature (degree C): 22.0

Liquid Temperature (degree C): 20.5

